

CLIENT:  
**230 LISGAR STREET INC.**

CONSULTANTS  
ARCHITECTS  
**project studio**  
Project Studio Incorporated  
(416) 461-9939 | www.projectstudio.ca

CIVIL ENGINEERS  
**NOVATECH**  
Engineers, Planners & Landscape Architects  
Suite 200, 240 Michael Cowpland Drive  
Ottawa, Ontario, Canada K2M 1Y6  
Telephone: (613) 254-9643  
Facsimile: (613) 254-5867  
Website: www.novatech-eng.com

- LEGEND**
- PROPOSED DECIDUOUS TREE
  - PROPOSED SHRUBS / PERENNIALS
  - PROPOSED RIVERSTONE
  - PROPOSED SOD
  - PROPOSED PRECAST CONCRETE PAVERS
  - TREE PROTECTION FENCE
  - PROPOSED LOOP BIKE RACK
  - EXISTING TREE TO REMAIN
  - EXISTING TREE TO BE REMOVED

No.	Issue	Date	MM/DD/YY	DR	CK
4	REVISED PER CITY COMMENTS	11/22/2023		ML	JL
3	REVISED PER CITY COMMENTS	07/25/2023		ML	JL
2	REVISED PER NEW SITE PLAN	05/29/2023		ML	JL
1	ISSUED FOR SITE PLAN CONTROL	11/22/2022		ML	JL

**JAMES B. LENOX & ASSOCIATES INC.**  
LANDSCAPE ARCHITECTS  
3332 CARLING AVE. OTTAWA, ONTARIO K2M 1S8  
Tel. (613) 722-5168 Fax. (866) 343-3942

PROJECT  
PROPOSED NINE STOREY RESIDENTIAL BUILDING  
230-232 LISGAR STREET, OTTAWA ON

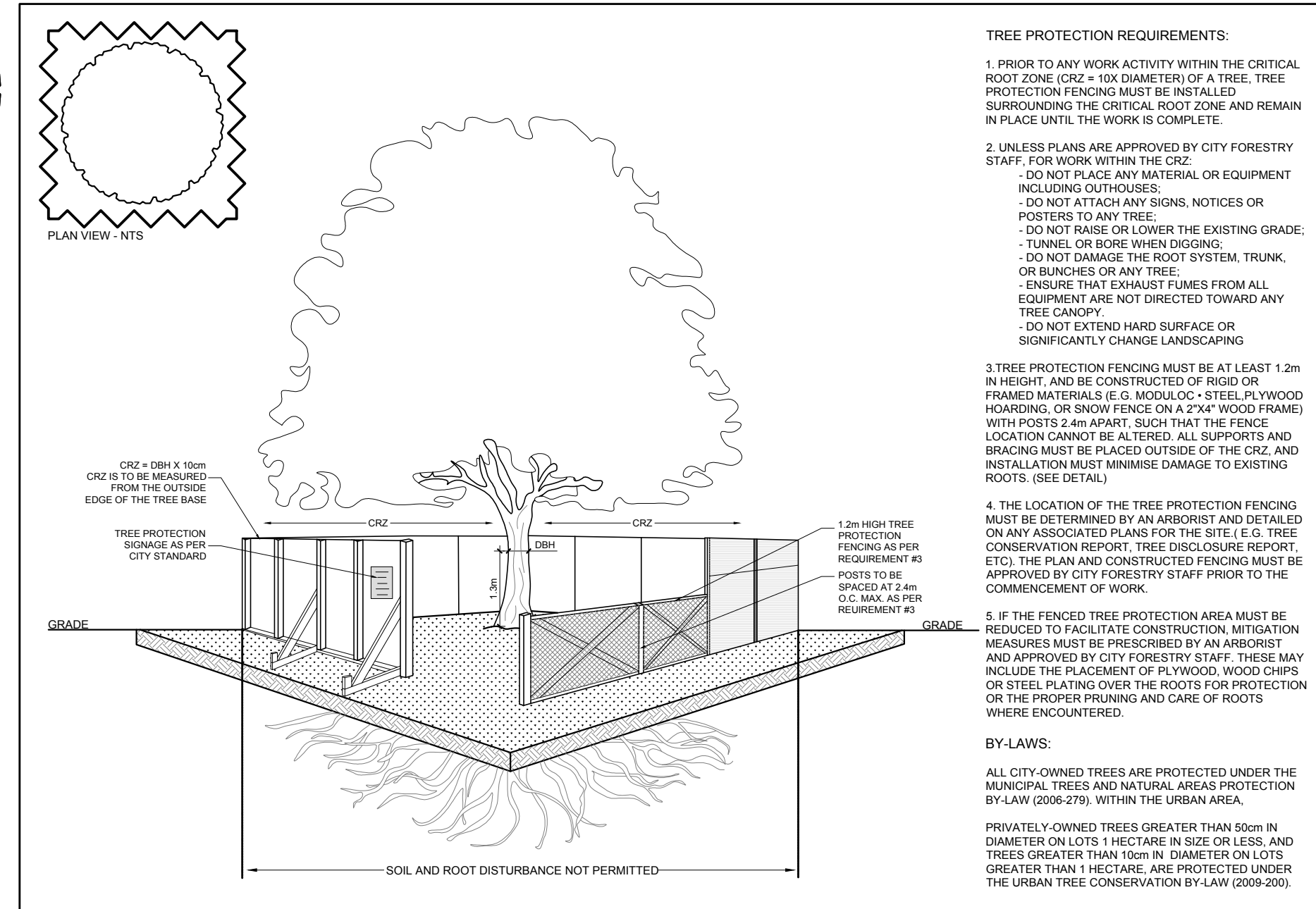
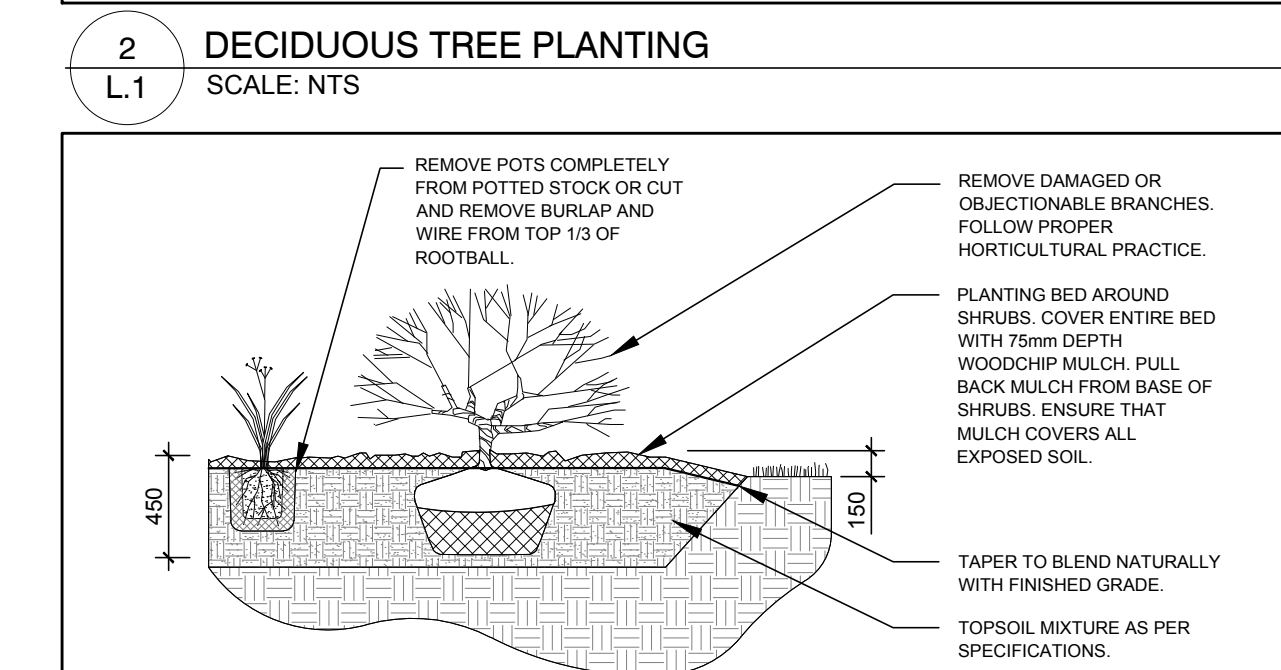
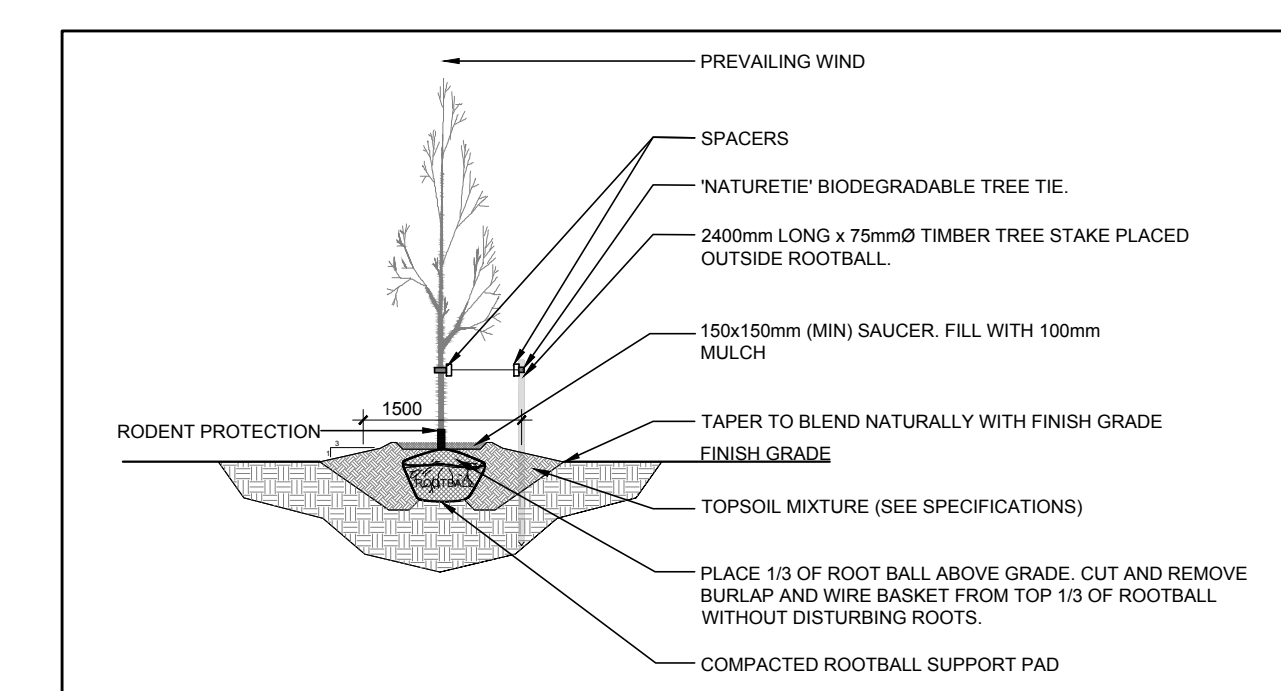
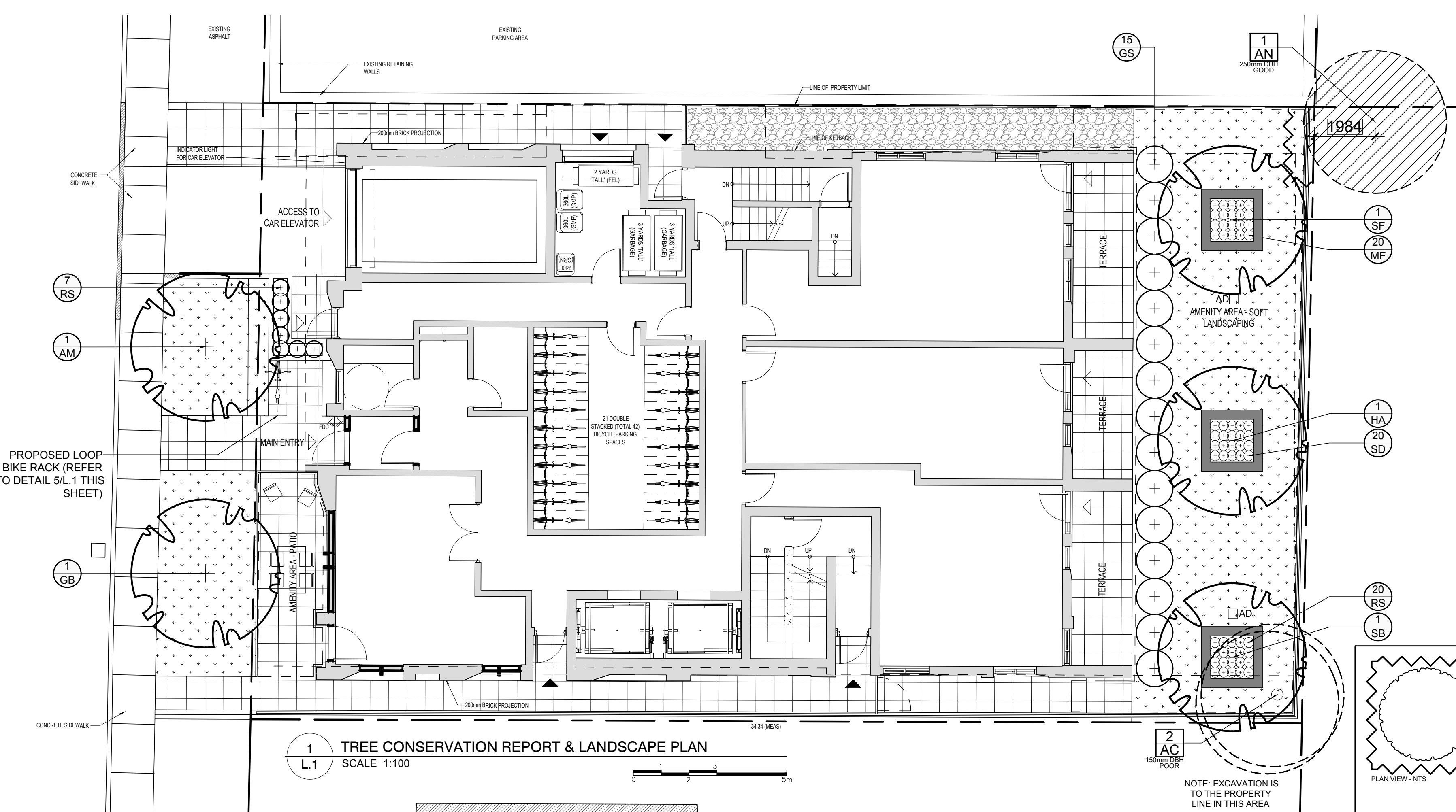
DRAWING  
TREE CONSERVATION REPORT & LANDSCAPE PLAN

SCALE  
AS SHOWN  
START DATE  
SEPTEMBER 2022  
PROJECT NO.  
22MIS2283

PROJECT NORTH  
DRAWING NO.  
**L.1**  
PLOT SIZE ARCH-D

#18902

D07-12-22-0166



**GENERAL NOTES:**

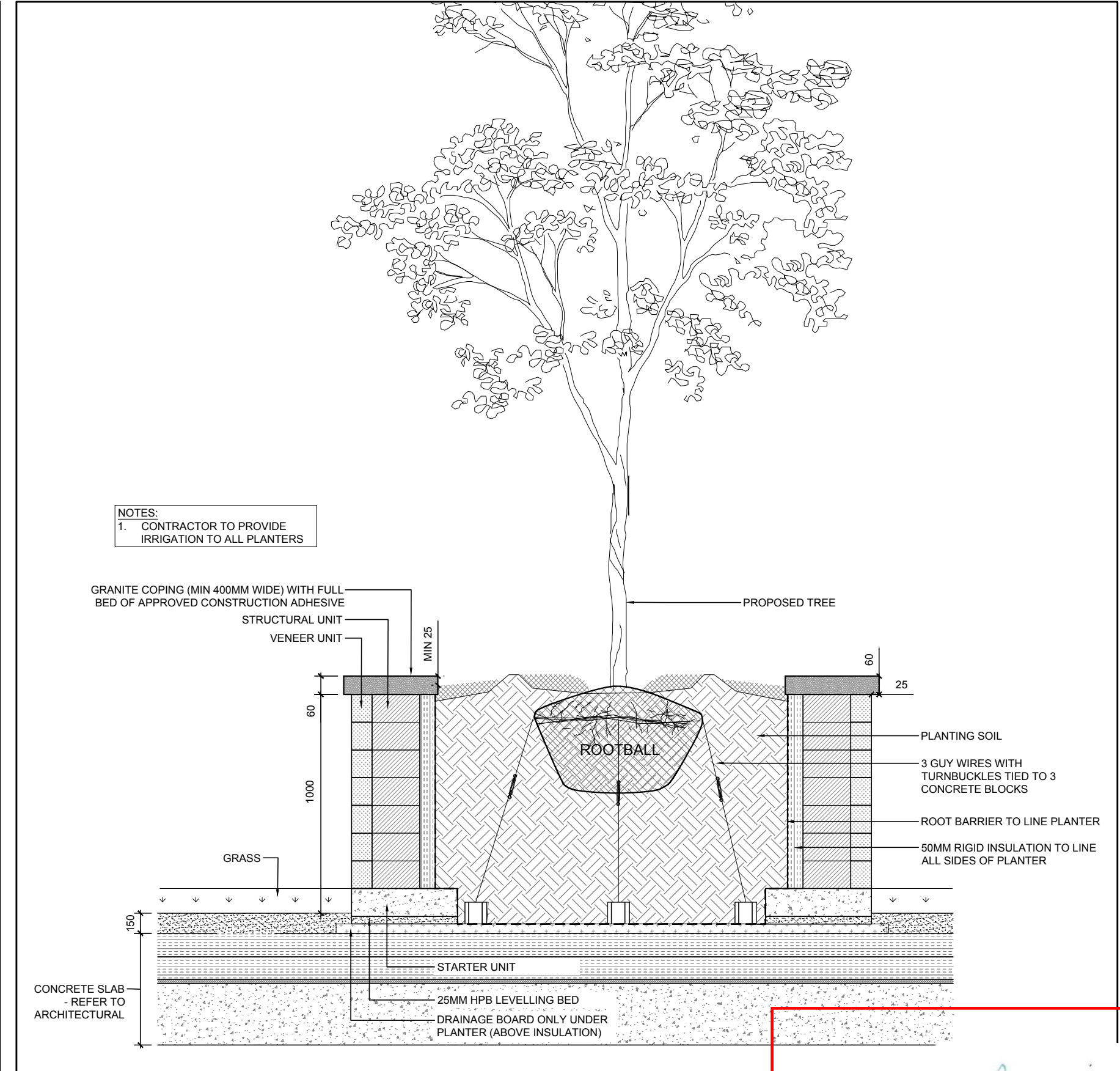
- It is the responsibility of the appropriate contractor or official to report any errors, omissions or discrepancies on this plan with actual site conditions to the Landscape Architect before proceeding with construction.
- The contractor is to notify all utility companies and authorities prior to any excavation and ascertain locations of underground services.
- The contractor is to reinstatement all areas and items damaged as a result of construction activity.
- The contractor is to comply with all pertinent codes and by-laws.
- The contractor is to maintain a positive surface run-off throughout the entire construction period.
- The Landscape Architect is not responsible for subsurface conditions.
- The contractor is to identify all existing trees to remain on site with the Landscape Architect prior to construction.
- The contractor is to stake the proposed location of all plant material in conjunction with the Landscape Architect prior to excavation.
- Minimum distances for selected deciduous trees are as follows:
  - Building Foundations 7.5m
  - Sidewalks 1.5m
  - Public Streets 2.5m
  - Underground Infrastructure 2.0m
- All trees within 1m of underground utility trenches are to be excavated by hand.
- Remove all protective wrapping from tree trunks after installation.
- Staking of trees shall only be performed if necessary.
- Ensure that mulch is pulled back a min. distance of 75mm from base of tree trunk.
- Plant material is to be under a 2 year warranty.

**EXISTING TREE LIST**

KEY	QTY	BOTANICAL NAME	COMMON NAME	SIZE	CONDITION	REMARKS	OWNERSHIP
AC	2	Amelanchier canadensis	Serviceberry	150mm DBH	Poor	To be removed	230 Lisgar
AN	1	Acer negundo	Manitoba Maple	250mm DBH	Good	To remain	297 Cooper

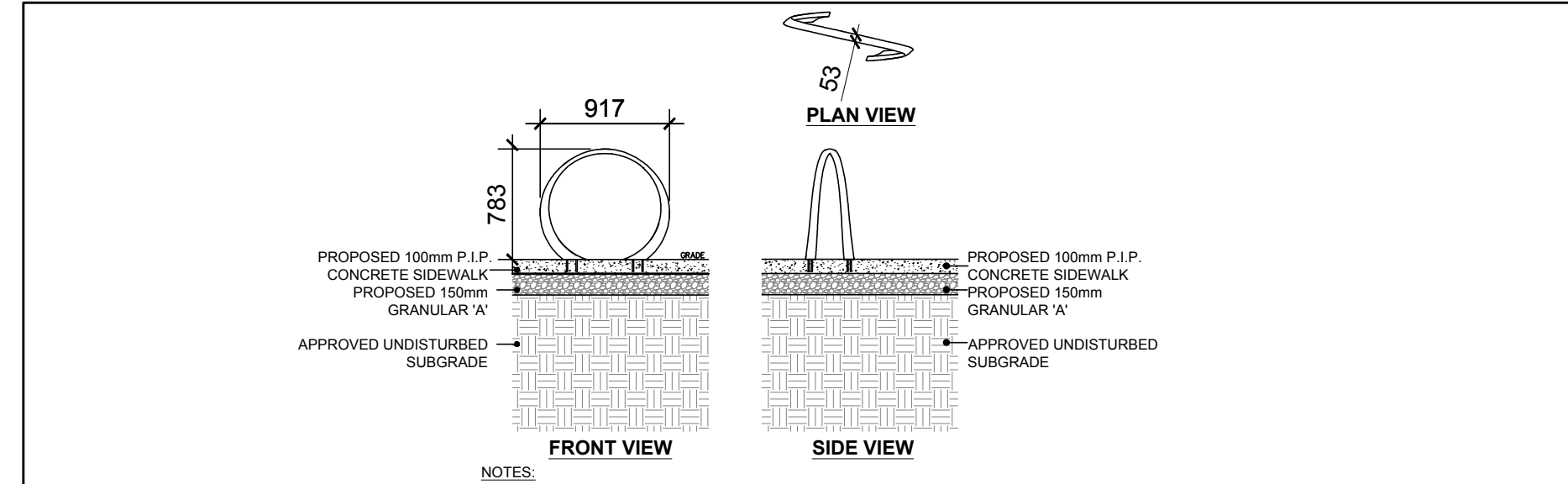
**PROPOSED PLANT LIST**

KEY	QTY	BOTANICAL NAME	COMMON NAME	SIZE	CONDITION	REMARKS
AM	1	Acer x freemanii 'Armstrong'	Armstrong Maple	60mm ø	B&B	
GB	1	Ginkgo biloba 'Princeton Sentry'	Princeton Sentry Ginkgo	60mm ø	B&B	Male tree
HA	1	Crataegus crus-galli var inermis	Thornless Cockspur Hawthorn	60mm ø	B&B	
SB	1	Amelanchier canadensis	Serviceberry	60mm ø	B&B	
SF	1	Amelanchier laevis 'JFS-ARB'	Spring Flurry Serviceberry	60mm ø	B&B	
GS	15	Spiraea x arguta	Garland Spirea	800mm ht.	Potted	
DL	20	Hemerocallis 'Stella D'Oro'	Stella D'Oro Daylily	100mm pot	Potted	400mm o.c.
MF	20	Hemerocallis 'Moses Fire'	Moses Fire Daylily	100mm pot	Potted	400mm o.c.
RS	27	Hemerocallis 'Ruby Stella'	Ruby Stella Daylily	100mm pot	Potted	400mm o.c.



**6 PRECAST CONCRETE PLANTER ON CONCRETE SLAB**  
SCALE: NTS

**4 TREE PROTECTION FENCING**  
SCALE: NTS



**5 LOOP BIKE RACK**  
SCALE: NTS

**APPROVED**  
By Andrew McCreight at 2:57 pm, Jan 30, 2024

**ANDREW MCCREIGHT**  
MANAGER, DEVELOPMENT REVIEW CENTRAL  
PLANNING, REAL ESTATE & ECONOMIC DEVELOPMENT  
DEPARTMENT, CITY OF OTTAWA