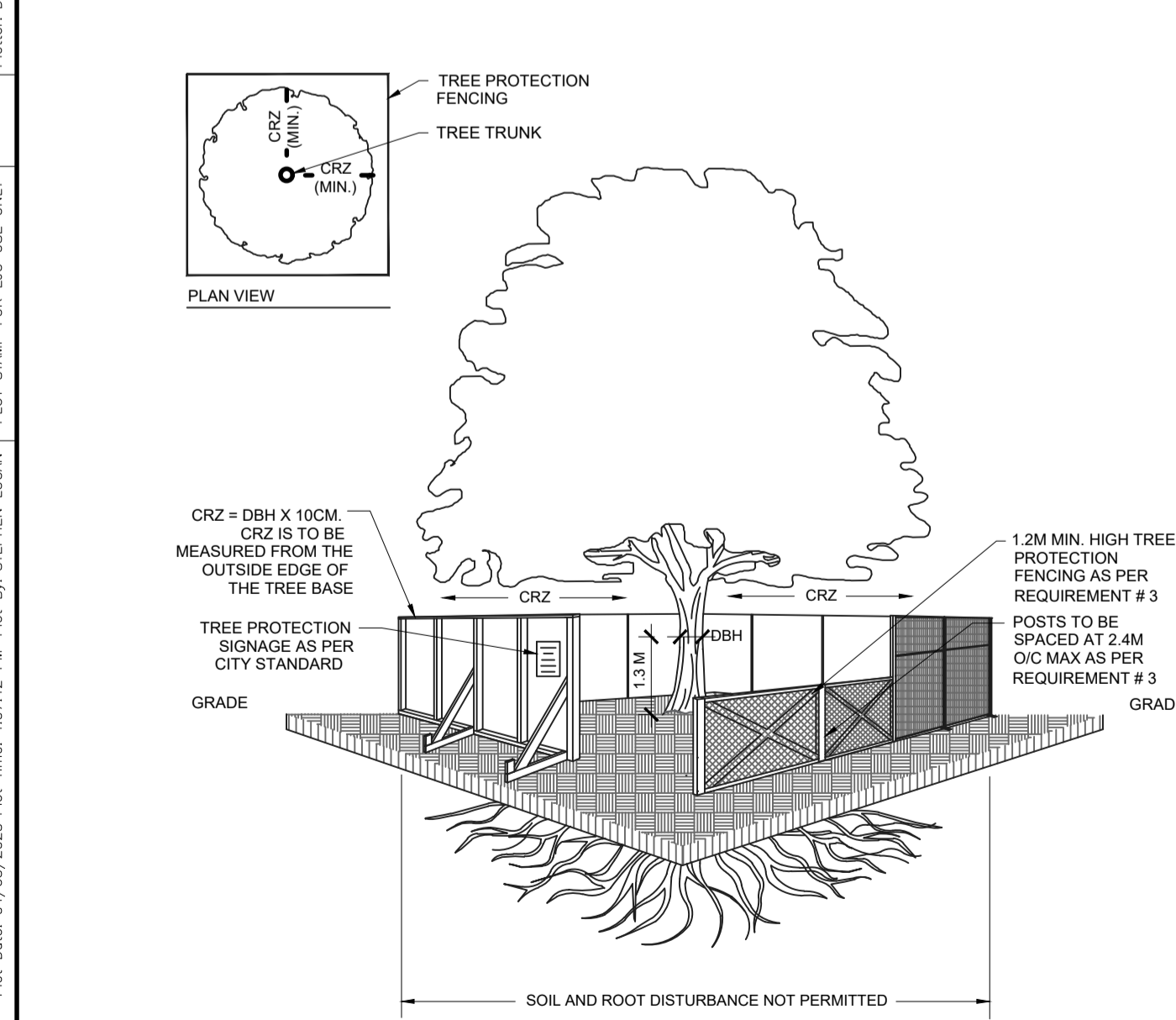


1 KEY PLAN
A1 1:750

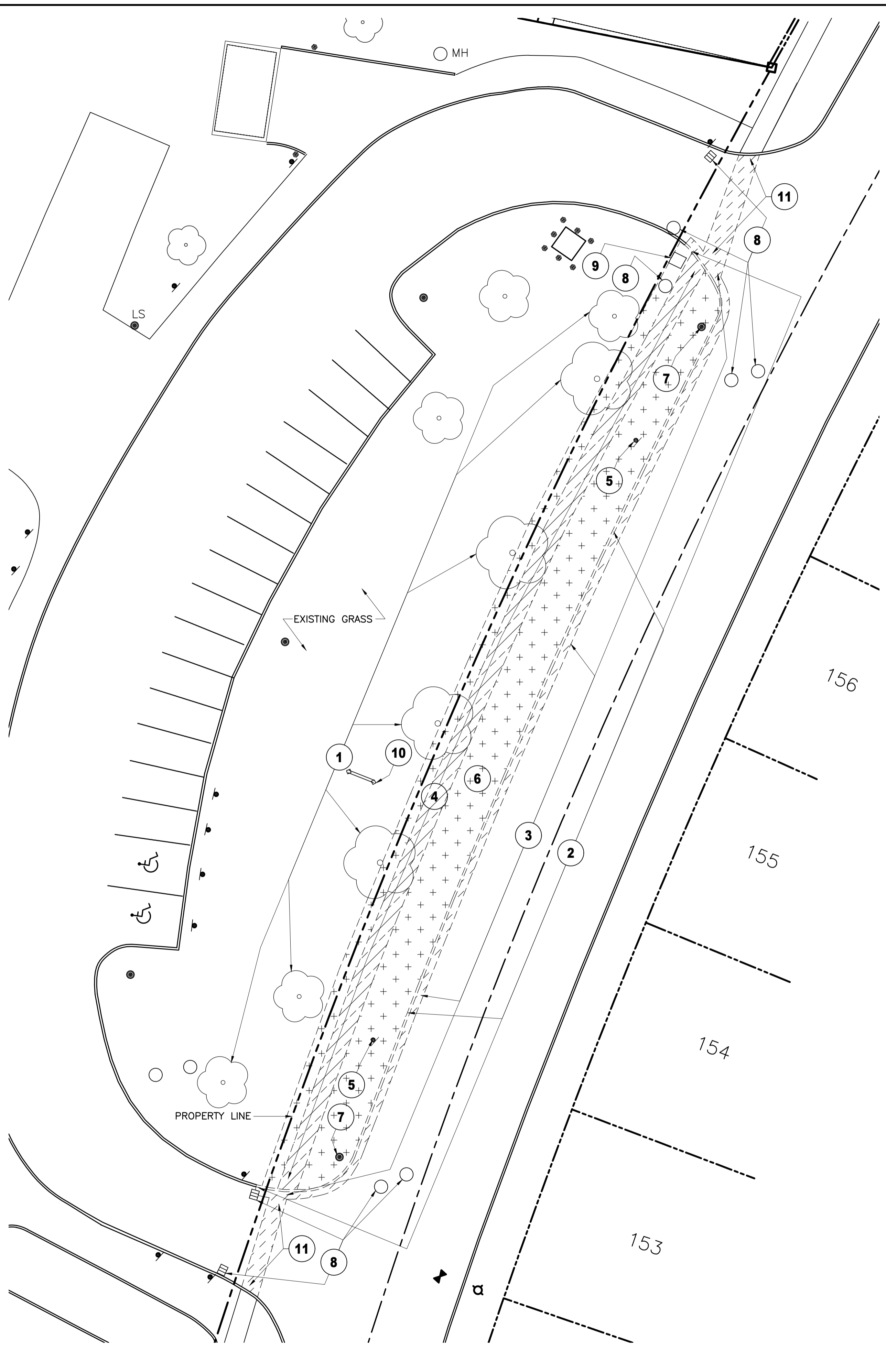
DRAWING LEGEND	DEMOLITION NOTES
REMOVE EXISTING ASPHALT PAVING	1 EXISTING TREES TO BE PROTECTED FROM DAMAGE FOR DURATION OF WORK. REFER TO DETAIL
REMOVE EXISTING CONCRETE SIDEWALK	2 REMOVE EXISTING CONCRETE CURB
REMOVE EXISTING TOPSOIL AND SOD	3 REMOVE EXISTING ASPHALT ALONG CONCRETE CURB. ALSO REFER TO CIVIL DRAWINGS
PROPERTY LINE	4 REMOVE EXISTING CONCRETE SIDEWALK AND GRANULAR BASE
CENTRELINE OF ROAD	5 REMOVE EXISTING METAL POST AND SIGN
	6 REMOVE EXISTING GRASS AND TOP SOIL AS REQUIRED TO COMPLETE NEW WORK
	7 EXISTING LIGHT STANDARD TO REMAIN
	8 EXISTING HYDRO KIOSK TO REMAIN
	9 EXISTING MANHOLE/CATCH BASIN
	10 EXISTING SCHOOL SIGN
	11 REMOVE EXISTING ASPHALT AS REQUIRED TO INSTALL NEW CONTINUOUS CONCRETE SIDEWALK



TREE PROTECTION REQUIREMENTS:

- PRIOR TO ANY WORK ACTIVITY WITHIN THE CRITICAL ROOT ZONE (CRZ = 10 X DIAMETER) OF A TREE, TREE PROTECTION FENCING MUST BE INSTALLED SURROUNDING THE CRITICAL ROOT ZONE, AND REMAIN IN PLACE UNTIL THE WORK IS COMPLETE.
- UNLESS PLANS ARE APPROVED BY CITY FORESTRY STAFF, FOR WORK WITHIN THE CRZ:
 - DO NOT PLACE ANY MATERIAL OR EQUIPMENT - INCLUDING OUTHOUSES;
 - DO NOT ATTACH ANY SIGNS, NOTICES OR POSTERS TO ANY TREE;
 - DO NOT RAISE OR LOWER THE EXISTING GRADE;
 - TUNNEL OR BORE WHEN DIGGING;
 - DO NOT DAMAGE THE ROOT SYSTEM, TRUNK, OR BRANCHES OR ANY TREE;
 - ENSURE THAT EXHAUST FLUMES FROM ALL EQUIPMENT ARE NOT DIRECTED TOWARD ANY TREE CANOPY;
 - DO NOT EXTEND HARD SURFACE OR SIGNIFICANTLY CHANGE LANDSCAPING
- TREE PROTECTION FENCING MUST BE AT LEAST 1.2M IN HEIGHT, AND CONSTRUCTED OF RIGID OR FRAMED MATERIALS (E.G. MODULOC - STEEL, PLYWOOD HOARDINGS, OR SNOW FENCE ON A 2"x4" WOOD FRAME) WITH POSTS 2.4M APART, SUCH THAT THE FENCE LOCATION CANNOT BE ALTERED. ALL SUPPORTS AND BRACING MUST BE PLACED OUTSIDE OF THE CRZ, AND INSTALLATION MUST MINIMISE DAMAGE TO EXISTING ROOTS. (SEE DETAILS)
- THE LOCATION OF THE TREE PROTECTION FENCING MUST BE DETERMINED BY AN ARBORIST AND DETAILED ON ANY ASSOCIATED PLANS FOR THE SITE (E.G. TREE CONSERVATION REPORT, TREE INFORMATION REPORT, ETC). THE PLAN AND CONSTRUCTED FENCING MUST BE APPROVED BY CITY FORESTRY STAFF PRIOR TO THE COMMENCEMENT OF WORK.
- IF THE FENCED TREE PROTECTION AREA MUST BE REDUCED TO FACILITATE CONSTRUCTION, MITIGATION MEASURES MUST BE PRESCRIBED BY AN ARBORIST AND APPROVED BY CITY FORESTRY STAFF. THESE MAY INCLUDE THE PLACEMENT OF PLYWOOD, WOOD CHIPS, OR STEEL PLATING OVER THE ROOTS FOR PROTECTION OR THE PROPER PRUNING AND CARE OF ROOTS WHERE ENCOUNTERED.

THE CITY'S TREE PROTECTION BY-LAW, 2020-340 PROTECTS BOTH CITY-OWNED TREES, CITY-WIDE, AND PRIVATELY-OWNED TREES WITHIN THE URBAN AREA. PLEASE REFER TO WWW.OTTAWA.CA/TREELAW FOR MORE INFORMATION ON HOW THE TREE BY-LAW APPLIES.



2 DEMOLITION PLAN
A1 1:200



ISSUE NO.	REV. NO.	DATE	ISSUE
3	0	23/05/04	RE-ISSUED FOR SITE PLAN CONTROL
2	0	23/03/28	RE-ISSUED FOR SITE PLAN CONTROL
1	0	22/12/02	ISSUED FOR SITE PLAN CONTROL

LES IDÉES, CONCEPTS, DISPOSITIONS ET PLANS MONTRÉS OU REPRÉSENTÉS PAR CE DESSIN APPARTIENNENT À EDWARD J. CUHACI AND ASSOCIATES ARCHITECTS INC. ET ONT ÉTÉ CRÉÉS, ET DÉVELOPPÉS POUR ÊTRE UTILISÉS DANS LE CADRE DU PRÉSENT PROJET. ILS NE DOIVENT PAS ÊTRE UTILISÉS À D'AUTRES FINS NI COMMUNIQUÉS À QUI QUE CE SOIT SANS LA PERMISSION ÉCRITE DE EDWARD J. CUHACI AND ASSOCIATES ARCHITECTS INC.

L'ARCHITECTE DÉCLINE TOUTE RESPONSABILITÉ DÉCOULANT DE PROBLÈMES FAISANT SUITE AU NON RESPECT DES PLANS ET DEVIS OU DE L'INTENTION DU CONCEPT QU'ILS TRANSMETTENT, OU DE TOUS PROBLÈMES POUVANT RÉSULTER DU DÉFAUT DE TIERS D'OBTENIR OU DE SUIVRE LES INSTRUCTIONS DE L'ARCHITECTE RELATIVEMENT AUX ERREURS, OMISSIONS, INCOHÉRENCES, AMBIGUITÉS OU CONTRADICTIONS ALLÉGUÉS.

L'ENTREPRENEUR DOIT VÉRIFIER TOUTES LES DIMENSIONS SUR PLACE ET INFORMER L'ARCHITECTE DE TOUT ÉCART AVANT LE DÉBUT DES TRAVAUX. NE PAS MESURER LES DESSINS À L'ÉCHELLE.

ALL IDEAS, DESIGNS, ARRANGEMENTS, AND PLANS INDICATED OR REPRESENTED BY THIS DRAWING ARE OWNED BY AND THE PROPERTY OF EDWARD J. CUHACI AND ASSOCIATES INC. AND WERE CREATED, EVOLVED, AND DEVELOPED FOR USE ON AND IN CONNECTION WITH THE SPECIFIED PROJECT. NONE OF THE IDEAS, DESIGNS, ARRANGEMENTS OR PLANS SHALL BE USED BY OR DISCLOSED TO ANY PERSON, FIRM, OR CORPORATION FOR ANY PURPOSE WHATSOEVER WITHOUT THE WRITTEN PERMISSION OF EDWARD J. CUHACI AND ASSOCIATES INC.

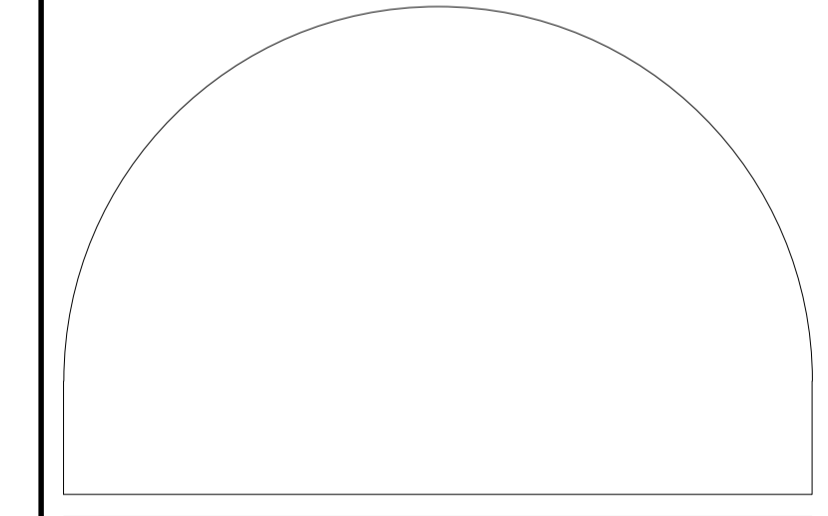
THE ARCHITECT WAIVES ANY AND ALL RESPONSIBILITY AND LIABILITY FOR PROBLEMS WHICH ARISE FROM FAILURE TO FOLLOW THESE PLANS, SPECIFICATIONS, AND THE DESIGN INTENT THEY CONVEY, OR FOR PROBLEMS WHICH ARISE FROM OTHERS' FAILURE TO OBTAIN AND/OR FOLLOW THE ARCHITECT'S GUIDANCE WITH RESPECT TO ANY ERRORS, OMISSIONS, INCONSISTENCIES, AMBIGUITIES OR CONFLICTS WHICH ARE ALLEGED.

CONTRACTOR TO VERIFY ALL DIMENSIONS AND NOTIFY THE ARCHITECT OF ANY DISCREPANCIES BEFORE WORK COMMENCES. DO NOT SCALE DRAWINGS

TRUE NORTH

PLAN NORTH

© Users\admin\Desktop\A1\HomeSigned.dwg



EDWARD J CUHACI & ASSOCIATES ARCHITECTS Inc.
171 Slater St, Suite 100, Ottawa, Ontario, K1P 5H7
Fax: (613) 236-1944 Telephone: (613) 236-7135 E-mail: info@cuhaci.com

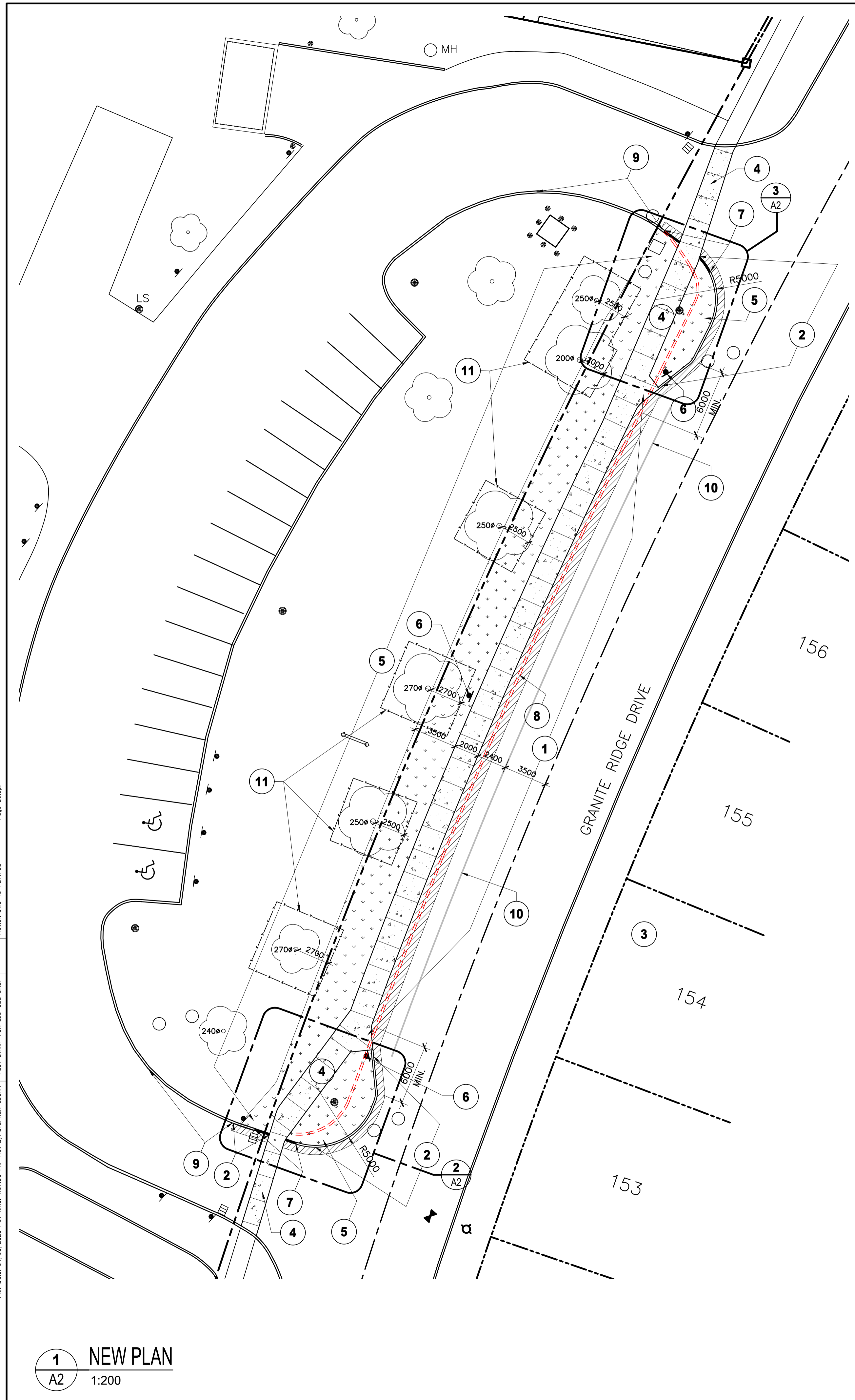
PROJECT TITLE/TITRE DU PROJET
**STITTSVILLE PUBLIC SCHOOL
DROP OFF LANE
40 GRANITE RIDGE DRIVE
STITTSVILLE, ON**

OTTAWA-CARLETON DISTRICT SCHOOL BOARD
133 GREENBANK ROAD
NEPEAN, ON

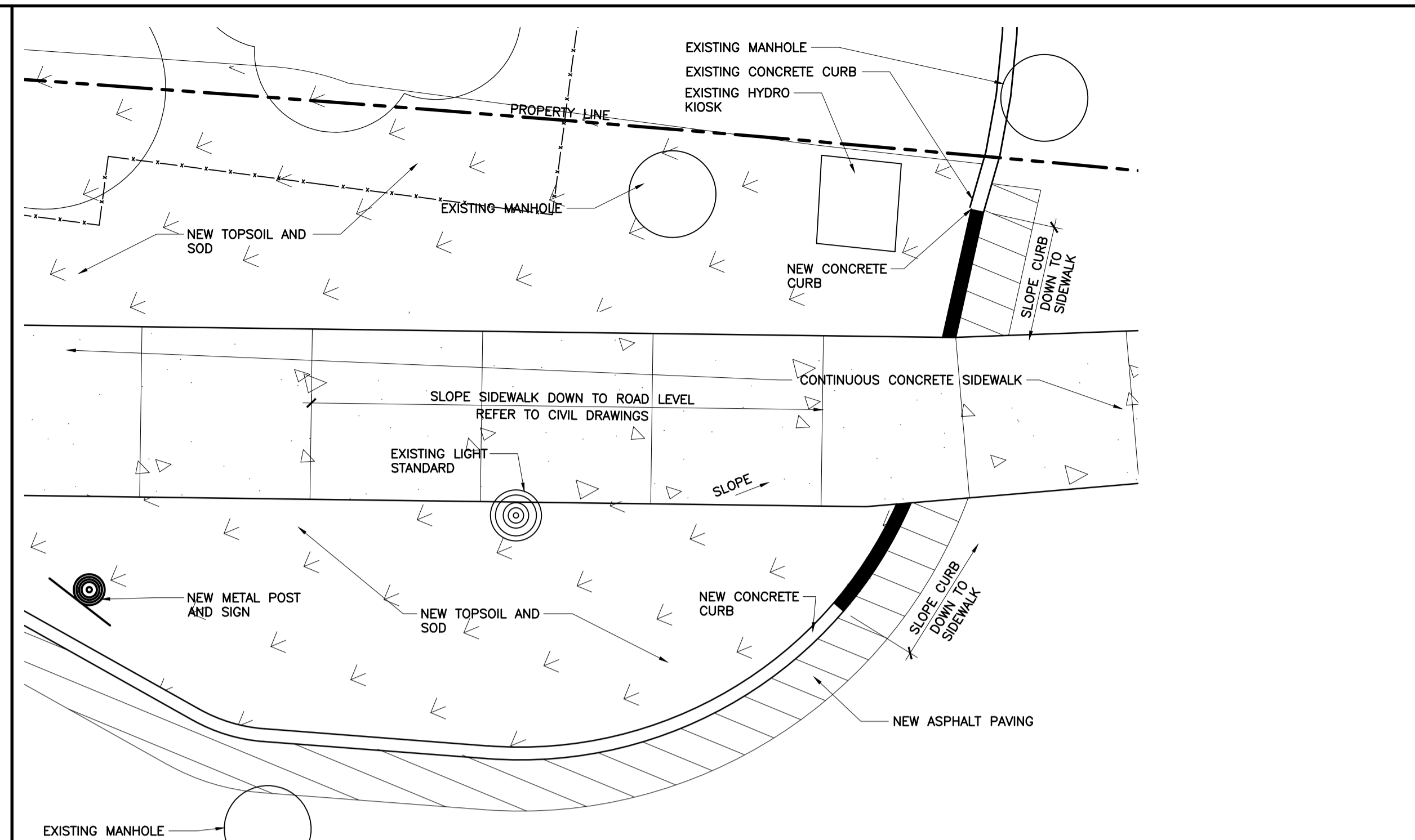
DRAWING TITLE/TITRE DU DESSIN
**KEY PLAN &
DEMOLITION PLAN**

SCALE	PROJ. No.	ISSUE No.	REV. No.
ECHELLE AS SHOWN	2233	3	0
DRAWN BY DESSINE PAR	SL	DRAWING/DESSIN	
CHECKED BY VÉRIFIÉ PAR	XF		
DATE	MAY 2023	ACAD FILE/FICHIER: 2233-A1.DWG	

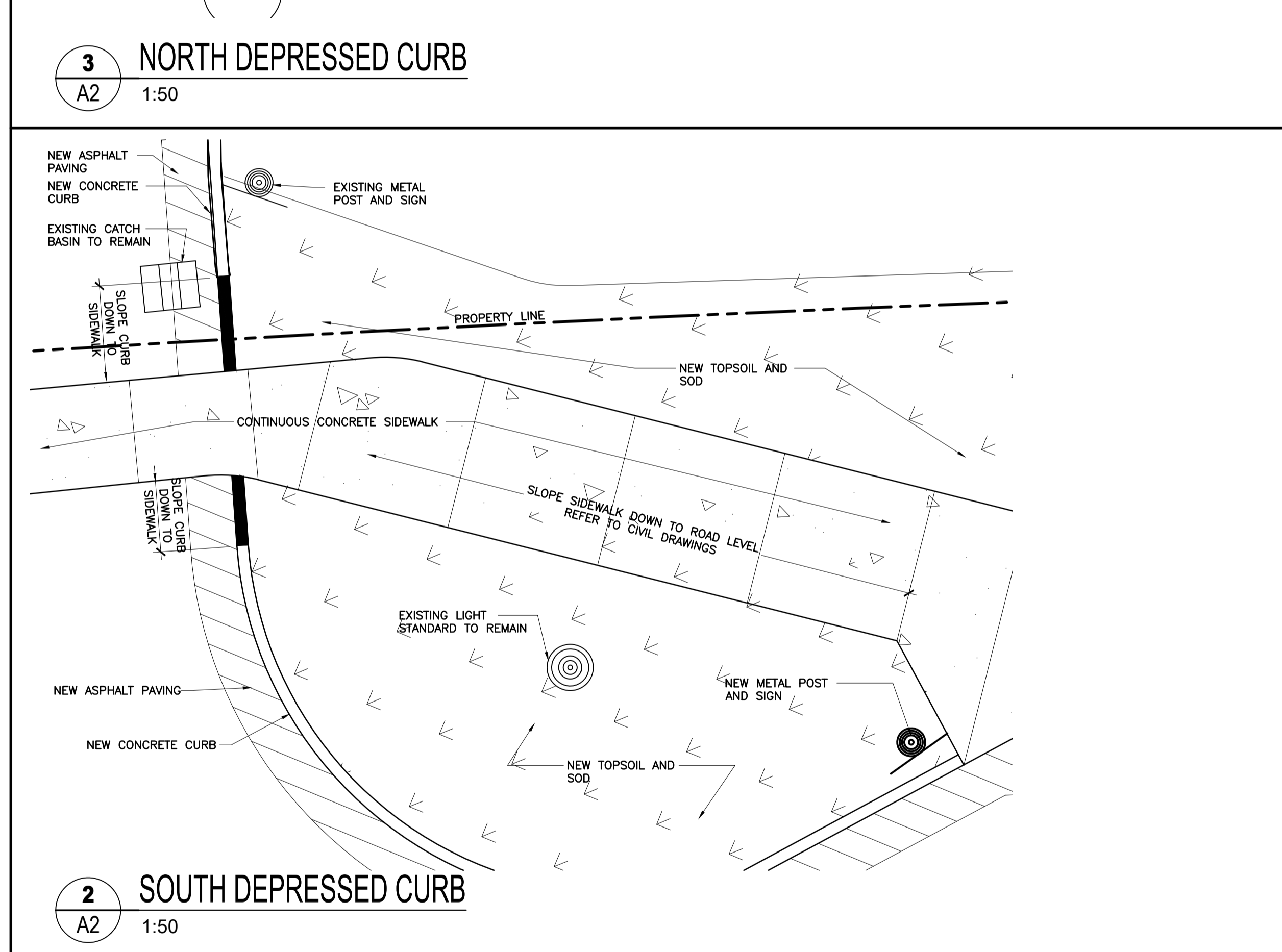
A1



1
A2
NEW PLAN
1:200



3
A2
NORTH DEPRESSED CURB
1:50



2
A2
SOUTH DEPRESSED CURB
1:50

GENERAL NOTES	DRAWING LEGEND	DRAWING NOTES
<p>1. ALL WORK ON CITY OF OTTAWA PROPERTY SHALL COMPLY WITH CITY OF OTTAWA STANDARDS</p> <p>2. ALSO REFER TO CIVIL DRAWINGS FOR ADDITIONAL INFORMATION AND REQUIREMENTS</p> <p>3. EXISTING TREES TO BE PROTECTED FROM DAMAGE FOR DURATION OF WORK</p>	<p>NEW ASPHALT PAVING</p> <p>NEW CONCRETE SIDEWALK WITH SAWCUTS</p> <p>NEW TOPSOIL AND SOD</p> <p>PROPERTY LINE</p> <p>CENTRELINE OF ROAD</p> <p>NEW METAL POST AND 'NO PARKING, DROP OFF ONLY' SIGN</p> <p>DEPRESSED CURB</p> <p>TREE PROTECTION FENCING AROUND CRITICAL ROOT ZONE PER CITY OF OTTAWA STANDARD. SEE DETAIL ON A1</p>	<p>1 NEW MONOLITHIC CONCRETE CURB AND SIDEWALK</p> <p>2 NEW CONCRETE CURB</p> <p>3 NEW ASPHALT PAVING</p> <p>4 NEW CONTINUOUS CONCRETE SIDEWALK. REINSTATE ASPHALT ON EITHER SIDE AS REQUIRED WHERE SIDEWALK CROSSES EXISTING LANES</p> <p>5 NEW TOP SOIL AND SOD MIN. 1200MM WIDE</p> <p>6 NEW METAL POST AND 'NO PARKING' SIGN</p> <p>7 SLOPE CURB DOWN TO SIDEWALK</p> <p>8 LINE OF PREVIOUS EXISTING CURB</p> <p>9 EXISTING CONCRETE CURB TO REMAIN</p> <p>10 NEW LINE PAINTING</p> <p>11 TREE PROTECTION FENCING AS PER CITY OF OTTAWA STANDARD. SEE DETAIL ON A1</p>



ISSUE NO.	REV. NO.	DATE	ISSUE
3	0	23/05/04	RE-ISSUED FOR SITE PLAN CONTROL
2	0	23/03/28	RE-ISSUED FOR SITE PLAN CONTROL
1	0	22/12/02	ISSUED FOR SITE PLAN CONTROL

LES IDÉES, CONCEPTS, DISPOSITIONS ET PLANS MONTRÉS OU REPRÉSENTÉS PAR CE DESSIN APPARTIENNENT À EDWARD J. CUHACI AND ASSOCIATES ARCHITECTS INC. ET ONT ÉTÉ CRÉÉS, ET DÉVELOPPÉS POUR ÊTRE UTILISÉS DANS LE CADRE DU PRÉSENT PROJET. ILS NE DOIVENT PAS ÊTRE UTILISÉS À D'AUTRES FINS NI COMMUNIQUÉS À QUI QUE CE SOIT SANS LA PERMISSION ÉCRITE DE EDWARD J. CUHACI AND ASSOCIATES ARCHITECTS INC.

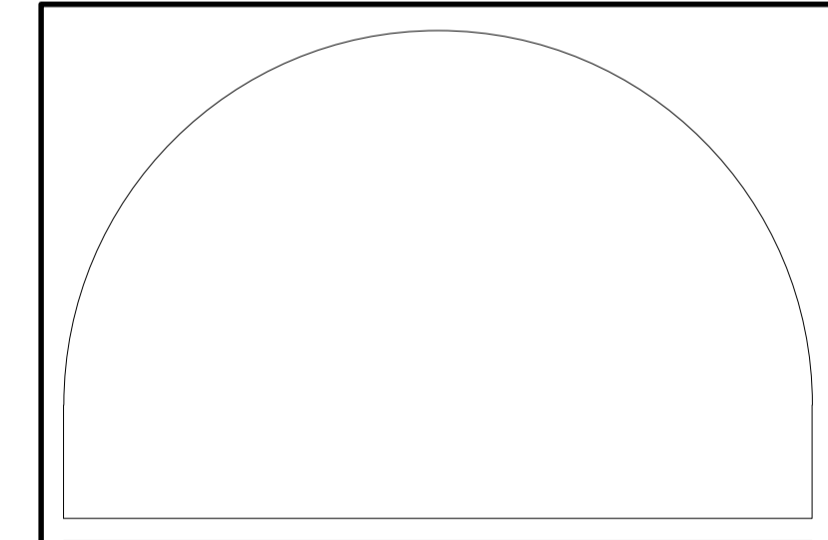
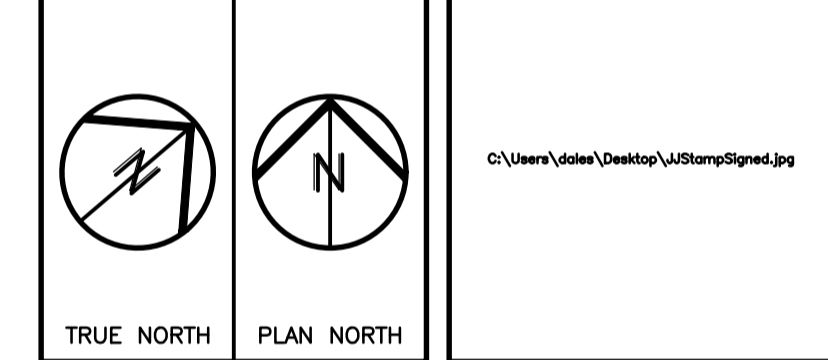
L'ARCHITECTE DÉCLINE TOUTE RESPONSABILITÉ DÉCOULANT DE PROBLÈMES FAISANT SUITE AU NON RESPECT DES PLANS ET DEVIS OU DE L'INTENTION DU CONCEPT QU'ILS TRANSMETTENT, OU DE TOUTS PROBLÈMES POUVANT RÉSULTER DU DÉFAUT DE TIERS D'OBTENIR OU DE SUIVRE LES INSTRUCTIONS DE L'ARCHITECTE RELATIVEMENT AUX ERREURS, OMISSIONS, INCOHÉRENCES, AMBIGUITÉS OU CONTRADICTIONS ALLÉGUÉES.

L'ENTREPRENEUR DOIT VÉRIFIER TOUTES LES DIMENSIONS SUR PLACE ET INFORMER L'ARCHITECTE DE TOUT ÉCART AVANT LE DÉBUT DES TRAVAUX. NE PAS MESURER LES DESSINS À L'ÉCHELLE.

ALL IDEAS, DESIGNS, ARRANGEMENTS, AND PLANS INDICATED OR REPRESENTED BY THIS DRAWING ARE OWNED BY AND THE PROPERTY OF EDWARD J. CUHACI AND ASSOCIATES INC. AND WERE CREATED, EVOLVED, AND DEVELOPED FOR USE ON AND IN CONNECTION WITH THE SPECIFIED PROJECT. NONE OF THE IDEAS, DESIGNS, ARRANGEMENTS OR PLANS SHALL BE USED BY OR DISCLOSED TO ANY PERSON, FIRM, OR CORPORATION FOR ANY PURPOSE WHATSOEVER WITHOUT THE WRITTEN PERMISSION OF EDWARD J. CUHACI AND ASSOCIATES INC.

THE ARCHITECT WAIVES ANY AND ALL RESPONSIBILITY AND LIABILITY FOR PROBLEMS WHICH ARISE FROM FAILURE TO FOLLOW THESE PLANS, SPECIFICATIONS, AND THE DESIGN INTENT THEY CONVEY, OR FOR PROBLEMS WHICH ARISE FROM OTHERS' FAILURE TO OBTAIN AND/OR FOLLOW THE ARCHITECT'S GUIDANCE WITH RESPECT TO ANY ERRORS, OMISSIONS, INCONSISTENCIES, AMBIGUITIES OR CONFLICTS WHICH ARE ALLEGED.

CONTRACTOR TO VERIFY ALL DIMENSIONS AND NOTIFY THE ARCHITECT OF ANY DISCREPANCIES BEFORE WORK COMMENCES. DO NOT SCALE DRAWINGS



EDWARD J CUHACI & ASSOCIATES ARCHITECTS Inc.
171 Slater St, Suite 100, Ottawa, Ontario, K1P 5H7
Fax: (613) 236-1944 Telephone: (613) 236-7135 E-mail: info@cuhaci.com

PROJECT TITLE/TITRE DU PROJET
STITTSVILLE PUBLIC SCHOOL DROP OFF LANE
40 GRANITE RIDGE DRIVE
STITTSVILLE, ON

OTTAWA-CARLETON DISTRICT SCHOOL BOARD
133 GREENBANK ROAD
NEPEAN, ON

DRAWING TITLE/TITRE DU DESSIN
NEW PLAN AND DETAILS

SCALE	PROJ. No.	ISSUE No.	REV. No.
ECHELLE AS SHOWN	2233	3	0
DRAWN BY DESSINE PAR	SL	DRAWING/DESSIN	
CHECKED BY VÉRIFIÉ PAR	XF	A2	
DATE	MAY 2023	ACAD FILE/FICHIER: 2233-A2.DWG	