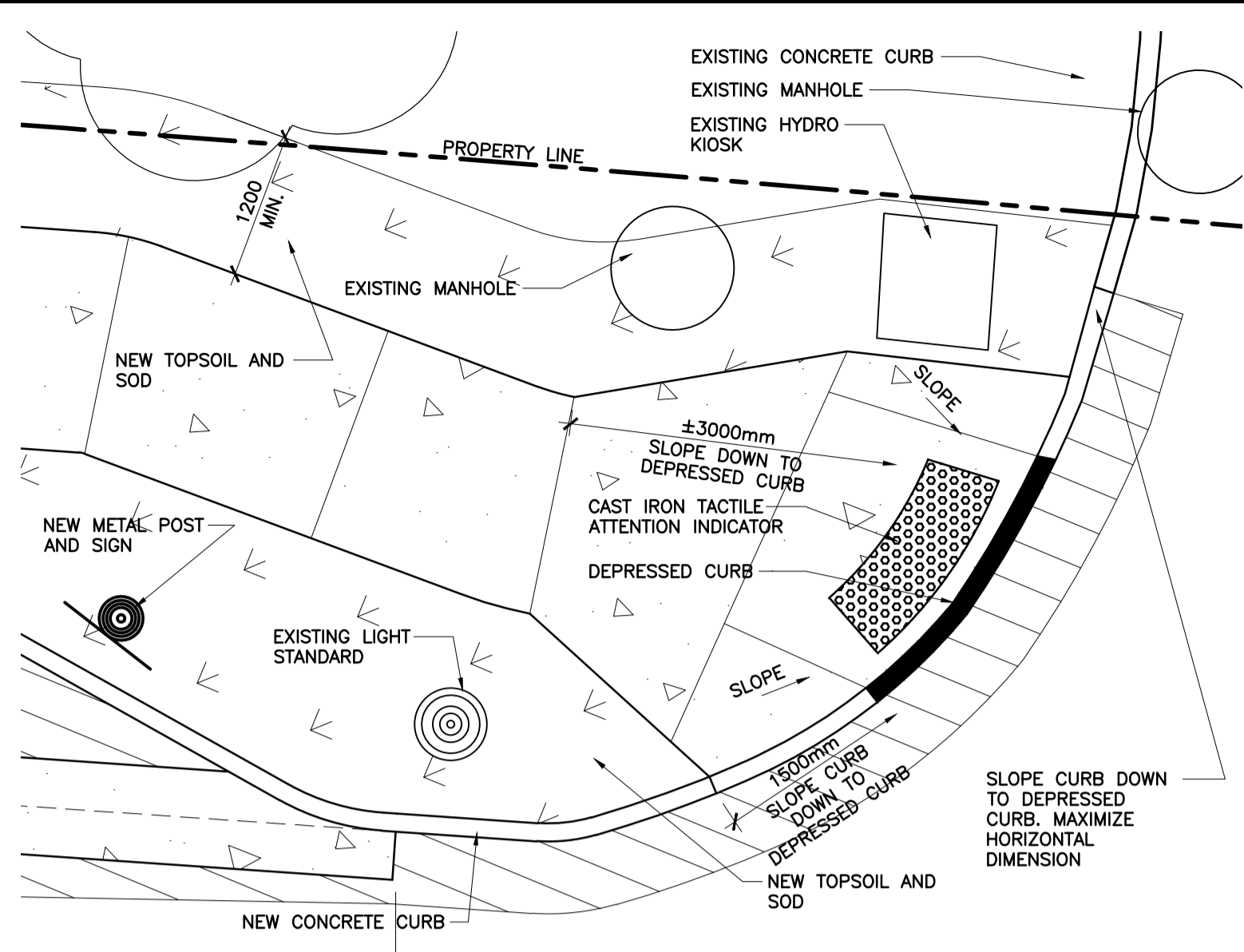
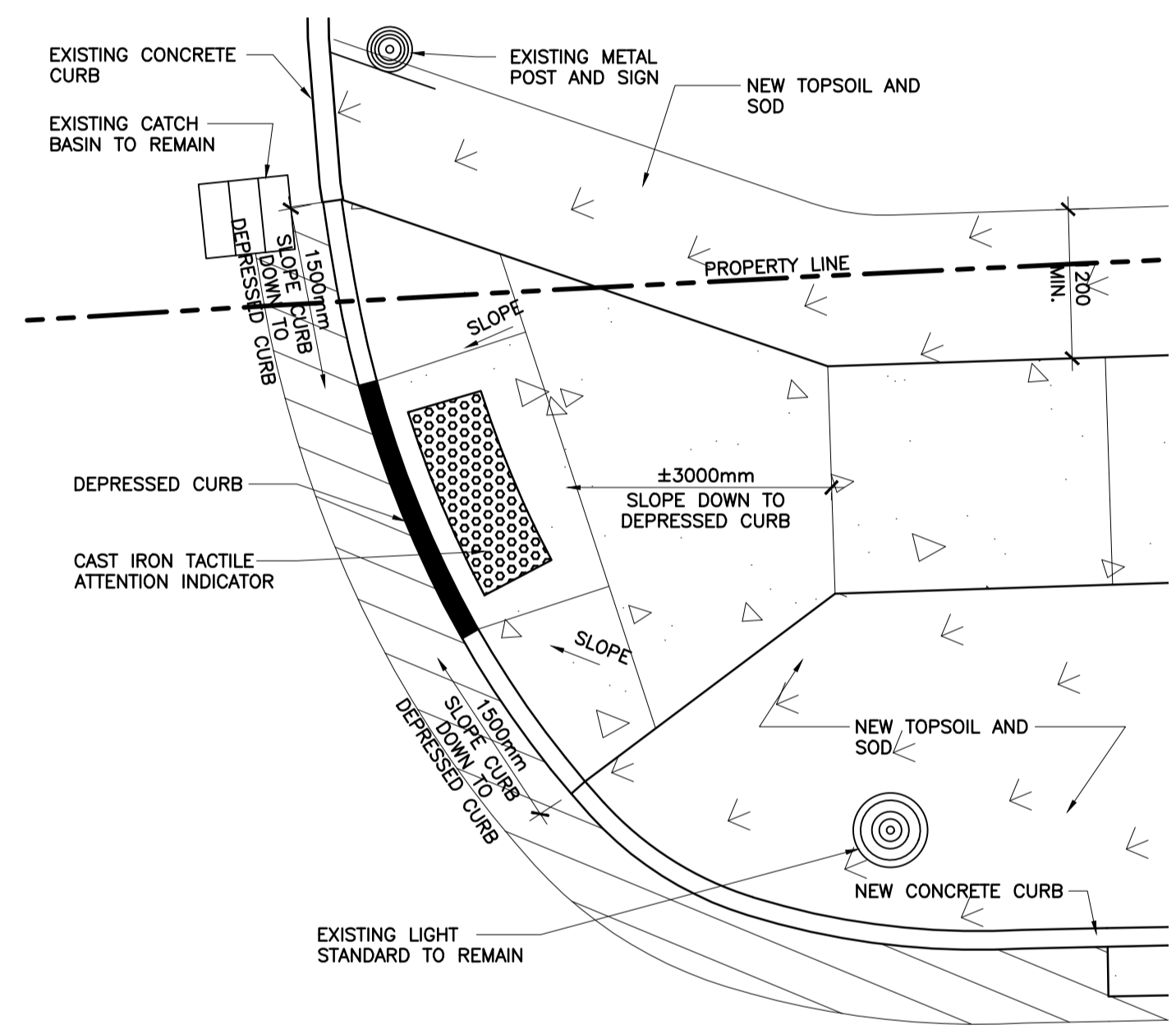


1
A2
NEW PLAN
1:200



2
A2
NORTH DEPRESSED CURB
1:50



3
A2
SOUTH DEPRESSED CURB
1:50

GENERAL NOTES

- ALL WORK ON CITY OF OTTAWA PROPERTY SHALL COMPLY WITH CITY OF OTTAWA STANDARDS
- ALSO REFER TO CIVIL DRAWINGS FOR ADDITIONAL INFORMATION AND REQUIREMENTS

DRAWING LEGEND

	NEW ASPHALT PAVING
	NEW CONCRETE SIDEWALK WITH SAWCUTS
	NEW TOPSOIL AND SOD
	PROPERTY LINE
	CENTRELINE OF ROAD
	NEW METAL POST AND 'NO PARKING, DROP OFF ONLY' SIGN
	DEPRESSED CURB

- DRAWING NOTES**
- NEW MONOLITHIC CONCRETE CURB AND SIDEWALK
 - NEW CONCRETE CURB
 - NEW ASPHALT PAVING
 - NEW CONCRETE SIDEWALK
 - NEW TOP SOIL AND SOD MIN. 1200MM WIDE
 - NEW METAL POST AND 'NO PARKING' SIGN
 - NEW DEPRESSED CONCRETE CURB
 - LINE OF PREVIOUS EXISTING CURB
 - EXISTING CONCRETE CURB TO REMAIN
 - MOUNTABLE CONCRETE GUTTER. REFER TO CIVIL DRAWINGS



1	0	22/12/22	ISSUED FOR SITE PLAN CONTROL
ISSUE NO.	REV. NO.	DATE	ISSUE

LES IDÉES, CONCEPTS, DISPOSITIONS ET PLANS MONTRÉS OU REPRÉSENTÉS PAR CE DESSIN APPARTIENNENT À EDWARD J. CUHACI AND ASSOCIATES ARCHITECTS INC. ET ONT ÉTÉ CRÉÉS, ET DÉVELOPPÉS POUR ÊTRE UTILISÉS DANS LE CADRE DU PRÉSENT PROJET. ILS NE DOIVENT PAS ÊTRE UTILISÉS À D'AUTRES FINS NI COMMUNIQUÉS À QUI QUE CE SOIT SANS LA PERMISSION ÉCRITE DE EDWARD J. CUHACI AND ASSOCIATES ARCHITECTS INC.

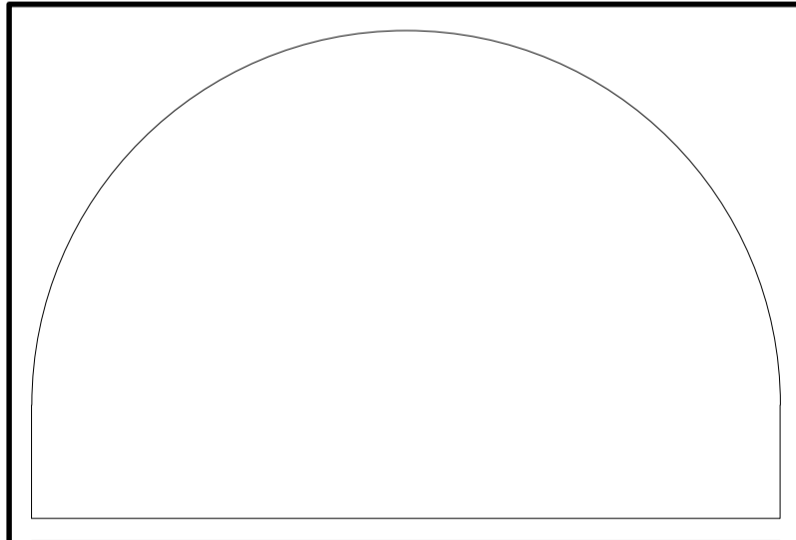
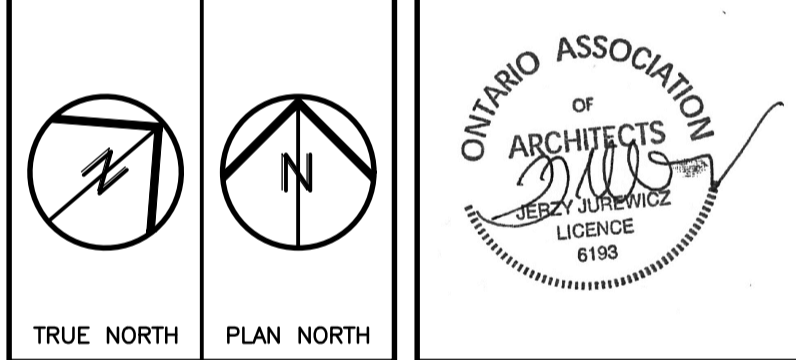
L'ARCHITECTE DÉCLINE TOUTE RESPONSABILITÉ DÉCOULANT DE PROBLÈMES FAISANT SUITE AU NON RESPECT DES PLANS ET DEVIS OU DE L'INTENTION DU CONCEPT QU'ILS TRANSMETTENT, OU DE TOUTS PROBLÈMES POUVANT RÉSULTER DU DÉFAUT DE TIERS D'OBTENIR OU DE SUIVRE LES INSTRUCTIONS DE L'ARCHITECTE RELATIVEMENT AUX ERREURS, OMISSIONS, INCOHÉRENCES, AMBIGUITÉS OU CONTRADICTIONS ALLÉGUÉES.

L'ENTREPRENEUR DOIT VÉRIFIER TOUTES LES DIMENSIONS SUR PLACE ET INFORMER L'ARCHITECTE DE TOUT ÉCART AVANT LE DÉBUT DES TRAVAUX. NE PAS MESURER LES DESSINS À L'ÉCHELLE.

ALL IDEAS, DESIGNS, ARRANGEMENTS, AND PLANS INDICATED OR REPRESENTED BY THIS DRAWING ARE OWNED BY AND THE PROPERTY OF EDWARD J. CUHACI AND ASSOCIATES INC. AND WERE CREATED, EVOLVED, AND DEVELOPED FOR USE ON AND IN CONNECTION WITH THE SPECIFIED PROJECT. NONE OF THE IDEAS, DESIGNS, ARRANGEMENTS OR PLANS SHALL BE USED BY OR DISCLOSED TO ANY PERSON, FIRM, OR CORPORATION FOR ANY PURPOSE WHATSOEVER WITHOUT THE WRITTEN PERMISSION OF EDWARD J. CUHACI AND ASSOCIATES INC.

THE ARCHITECT WAIVES ANY AND ALL RESPONSIBILITY AND LIABILITY FOR PROBLEMS WHICH ARISE FROM FAILURE TO FOLLOW THESE PLANS, SPECIFICATIONS, AND THE DESIGN INTENT THEY CONVEY, OR FOR PROBLEMS WHICH ARISE FROM OTHERS' FAILURE TO OBTAIN AND/OR FOLLOW THE ARCHITECT'S GUIDANCE WITH RESPECT TO ANY ERRORS, OMISSIONS, INCONSISTENCIES, AMBIGUITIES OR CONFLICTS WHICH ARE ALLEGED.

CONTRACTOR TO VERIFY ALL DIMENSIONS AND NOTIFY THE ARCHITECT OF ANY DISCREPANCIES BEFORE WORK COMMENCES. DO NOT SCALE DRAWINGS



EDWARD J CUHACI & ASSOCIATES ARCHITECTS Inc.
171 Slater St, Suite 100, Ottawa, Ontario, K1P 5H7
Fax: (613) 236-1944 Telephone: (613) 236-7135 E-mail: info@cuhaci.com

PROJECT/TITRE DU PROJET
**STITTSVILLE PUBLIC SCHOOL
DROP OFF LANE**
40 GRANITE RIDGE DRIVE
STITTSVILLE, ON

OTTAWA-CARLETON DISTRICT SCHOOL BOARD
133 GREENBANK ROAD
NEPEAN, ON

DRAWING/TITRE DU DESSIN
NEW PLAN AND DETAILS

SCALE ECHELLE	AS SHOWN	PROJ. No 2233	ISSUE No 1	REV. No 0
DRAWN BY DESSINE PAR	SL	DRAWING/DESSIN		
CHECKED BY VÉRIFIÉ PAR	XF	A2		
DATE	NOVEMBER 2022			

Plot Date: 02/12/2022 Plot Time: 11:52:21 AM Plot By: DALE SWAIN
Plot Stamp For Use Only
Printer: DWG TO PDF PLOT
Page Setup