

Site Plan Control and FLUDA : Design Drawings

NEW CAMPUS DEVELOPMENT FOR THE OTTAWA HOSPITAL
Hospital and Central Utility Plant

930 Carling Avenue & 520 Preston Street, Ottawa, ON

RE-ISSUED FOR SPC AND FLUDA APPROVAL

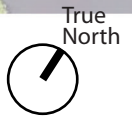
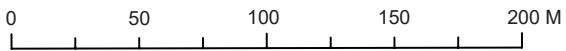
July 25, 2023

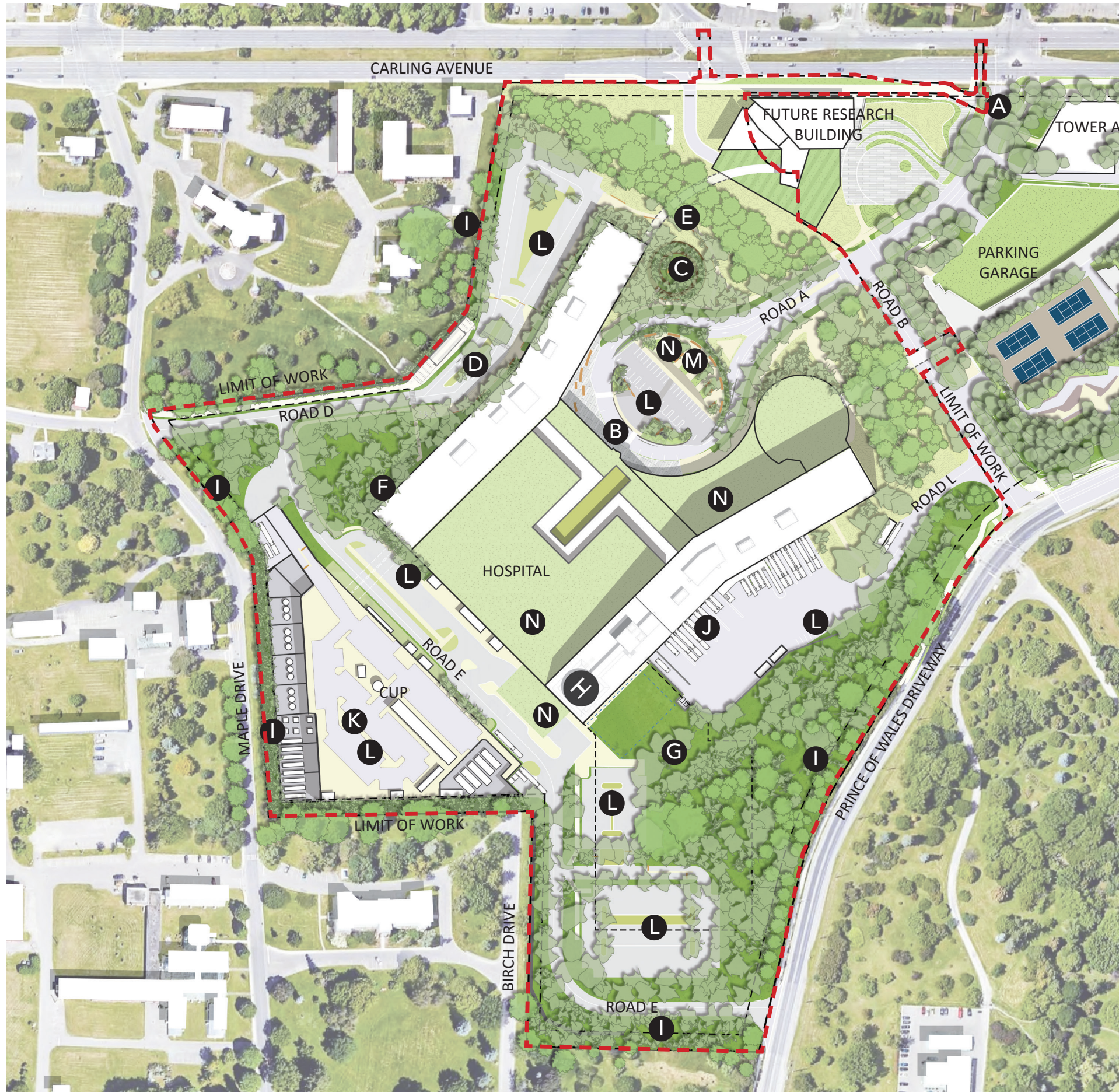
TABLE OF CONTENTS

MASTER SITE PHASING PLAN	3
HOSPITAL AND CUP: ILLUSTRATIVE SITE PLAN	4
HOSPITAL AND CUP SITE PLAN DIAGRAM.....	5
BICYCLE CIRCULATION AND PARKING	6
BICYCLE PARKING ENLARGEMENTS AND DETAILS.....	7
VEHICULAR PARKING PLAN	8
LANDSCAPE PLANTING PLAN	9
LANDSCAPE PLANTING SCHEDULE	10
LANDSCAPE TREE PLANTING CHARACTER	12
SITE / BUILDING CROSS-SECTIONS	14
LANDSCAPE PRECEDENTS & CHARACTER	17
VIEWS ANALYSIS	20
CONCEPTUAL RENDERINGS.....	23
LANDSCAPE EXPERIENTIAL VIGNETTES.....	29
LIGHTING DESIGN CONCEPT	33
CONTEXT PLAN 1:1000.....	36
APPENDIX A: LARGE FORMAT PLANS	



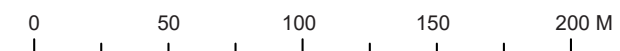
Phase	Project
1	Master Site Plan Approvals
2	Parking Garage
3	New Hospital CUP
4	New Hospital
5	Potential LRT Station Expansion
6	Research Tower
7A	Carling Tower A
7B	Carling Tower B
7C	Carling Tower C
8	New Hospital Expansion
9	New Hospital and UOHI Expansion

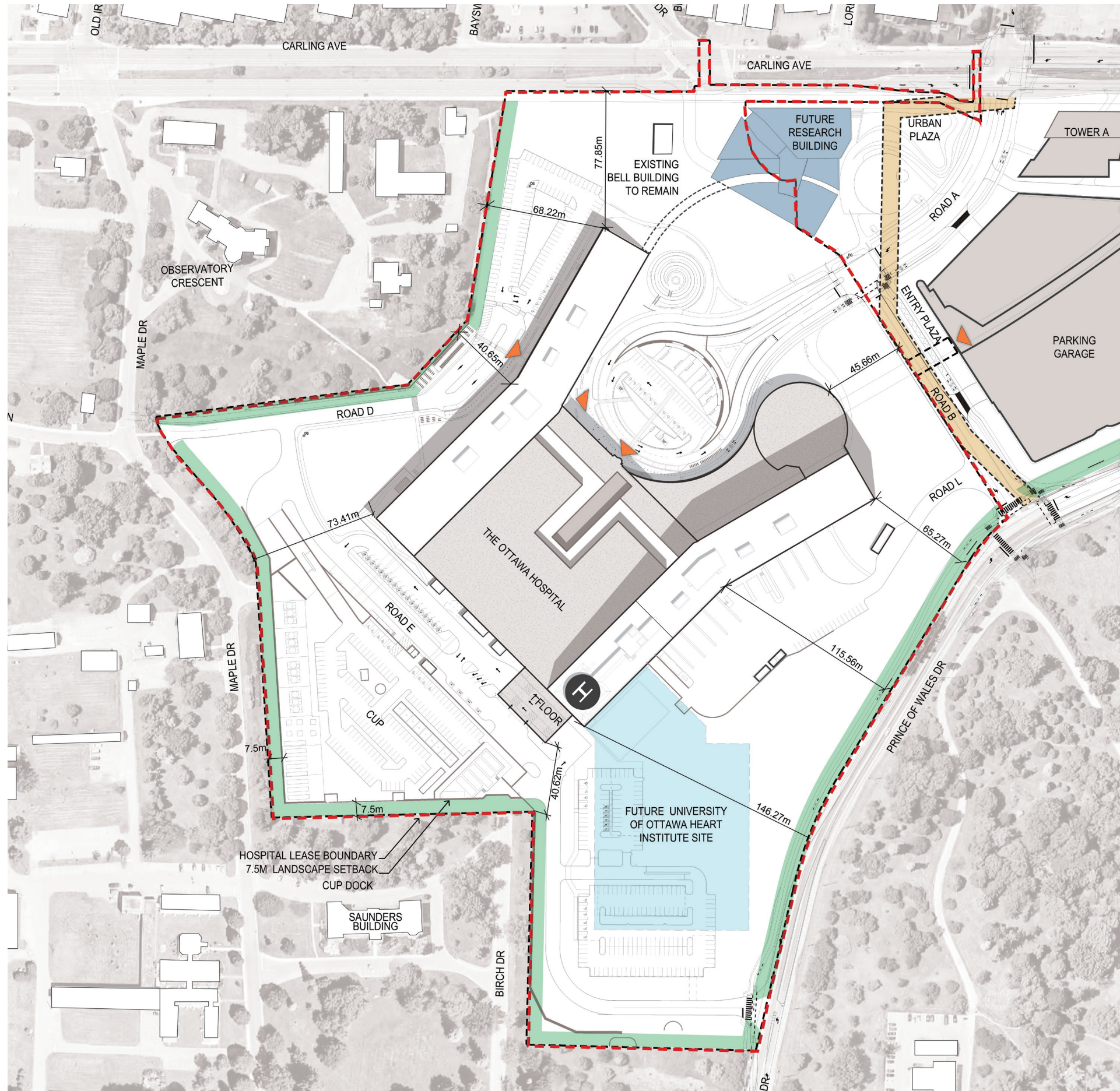




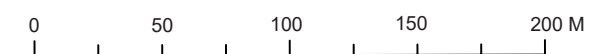
LEGEND

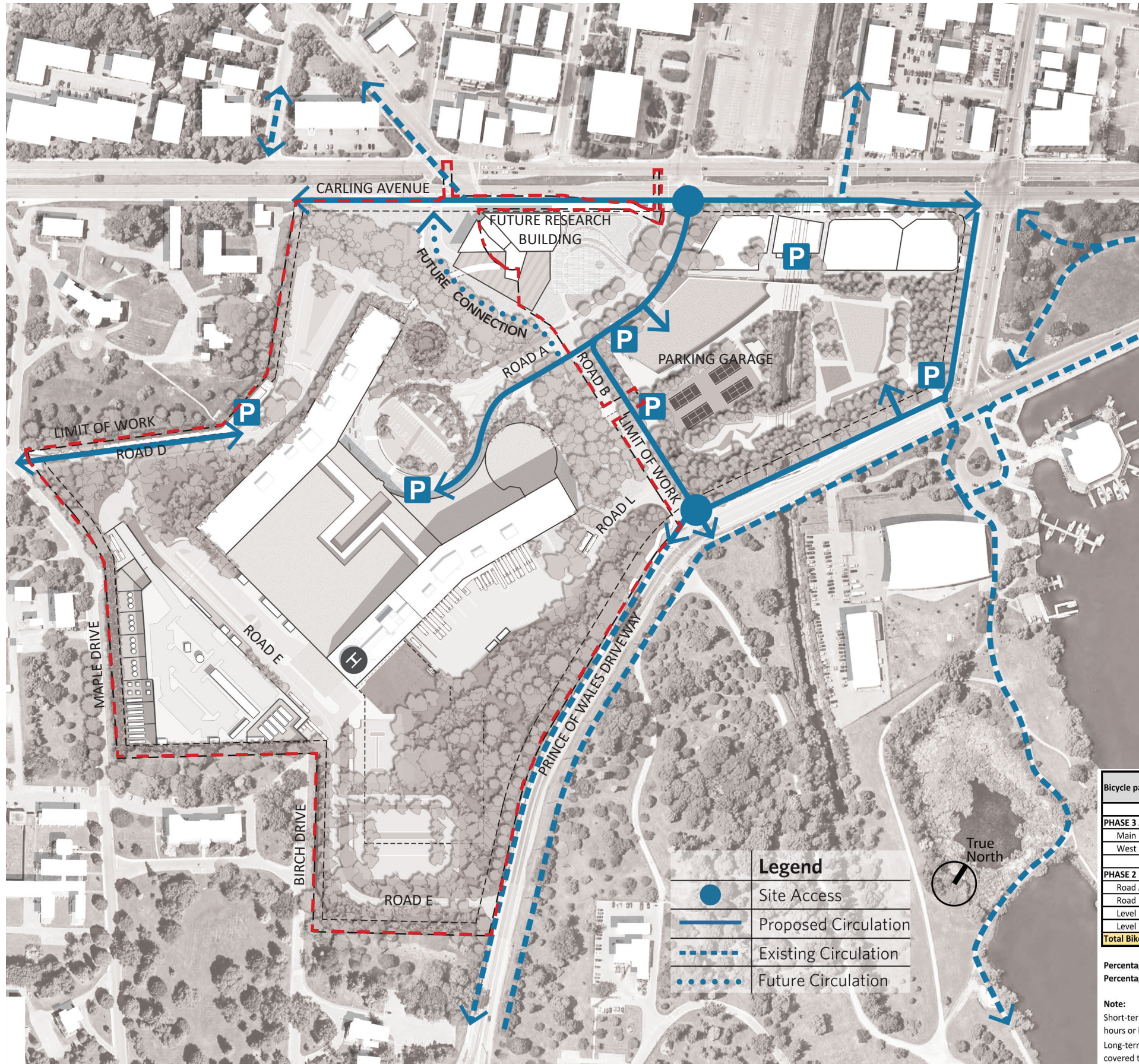
- A CARLING AVENUE CAMPUS GATEWAY
- B MAIN ENTRY
- C CONTEMPLATION GARDEN
- D WEST ENTRANCE
- E WOODLAND PATH
- F SUNKEN GARDEN
- G MEANDERS
- H HELIPORT
- I SHELTER BELTS
- J SERVICE DOCKS
- K CENTRAL UTILITY PLANT (CUP)
- L PARKING
- M MAIN ENTRY PLAZA
- N GREEN ROOF





Legend	
	Phase 3 & 4 Limit of Work
	Proposed / Future Building
	7.5m Landscape Setback
	Future UOHI
	Mooney's Bay Sanitary Sewer Easement
	Public Hospital Entrance





Bicycle parking	Short-Term (Outdoor)	Long-Term (Outdoor)	Long-Term (Indoor)	Total
PHASE 3 AND 4 HOSPITAL AND CUP COUNT				
Main Entrance	48	-	-	320
West Entrance	88	184	-	
PHASE 2 PARKING COUNT (N.I.C)				
Road A	52	-	-	
Road B	84	-	-	
Level P1	-	-	92	
Level P2	-	-	92	
Total Bike Parking	262	184	184	630

Percentage of Bike Parking by Location = 50% Hospital vs 50% Parking Garage
 Percentage of Bike Parking by Condition = 42.5% Short-Term vs. 57.5% Long-Term

Note:
 Short-term bike parking refers to non-enclosed bicycle parking typically used by staff for a period of two hours or less.
 Long-term bike parking refers to bicycle parking that is easily accessible to residents and employees and covered to protect bicycles from rain and snow.



Quad Hi-Density Bike Racks



Inverted U Rack



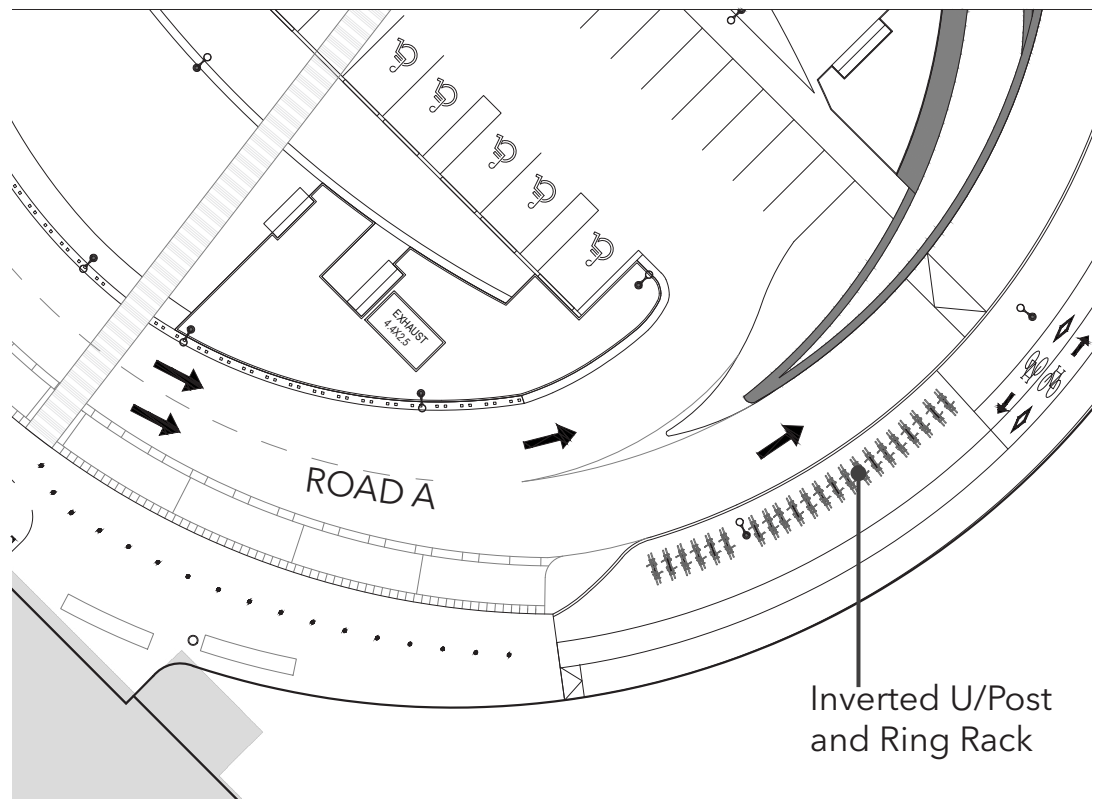
Post and Ring Rack

BIKE PARKING RACKS

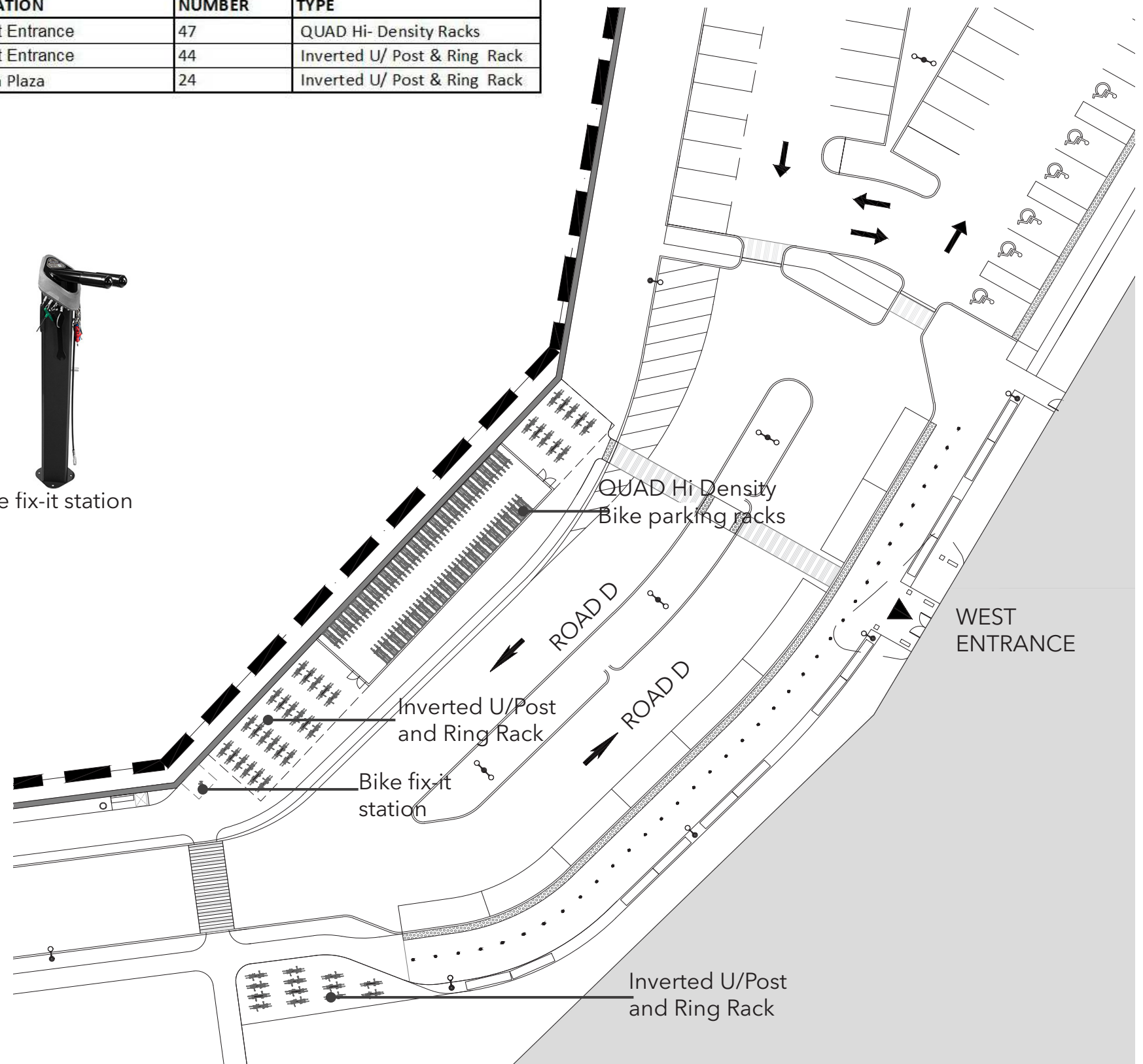
LOCATION	NUMBER	TYPE
West Entrance	47	QUAD Hi- Density Racks
West Entrance	44	Inverted U/ Post & Ring Rack
Main Plaza	24	Inverted U/ Post & Ring Rack



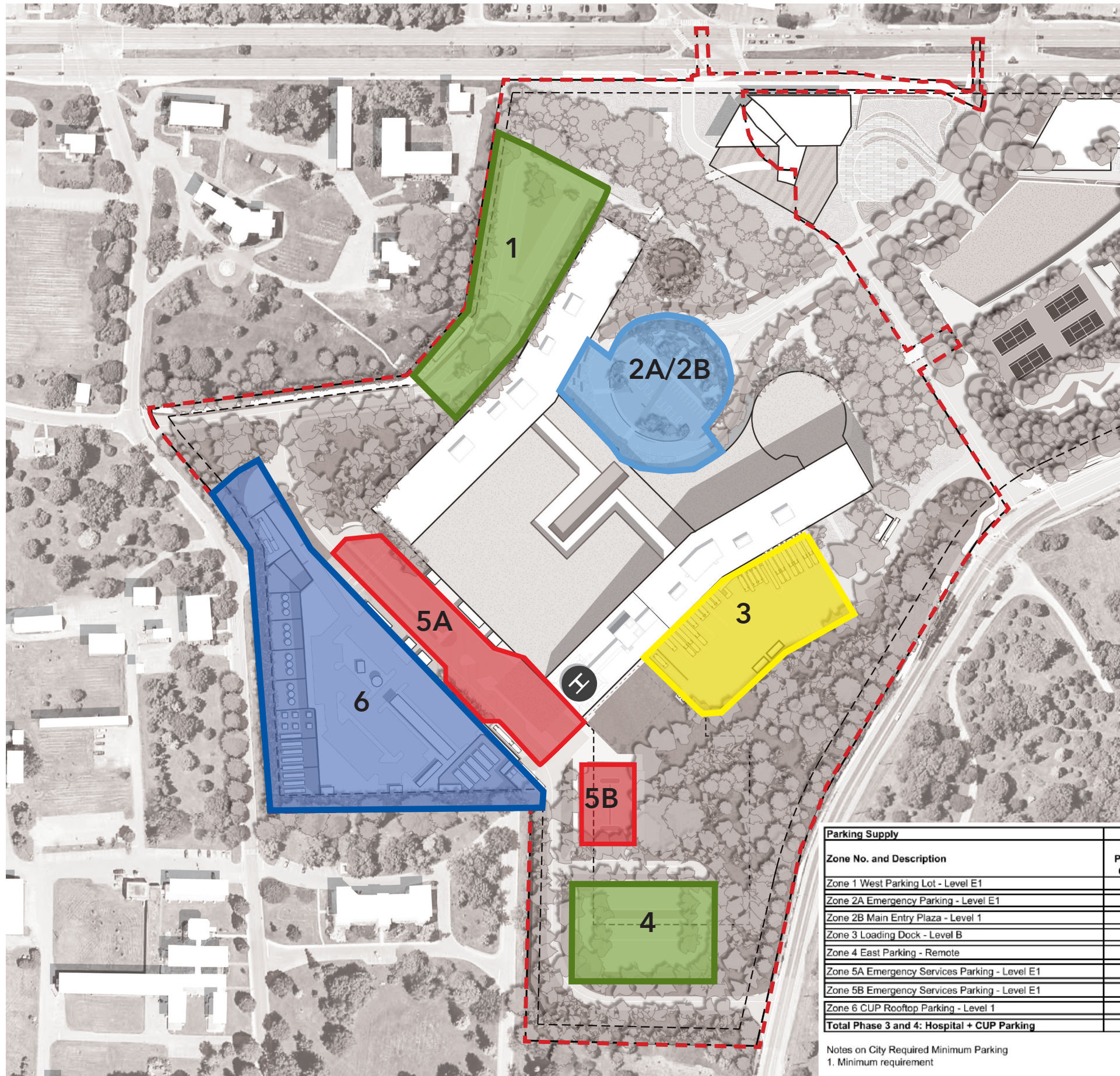
Bike fix-it station



Bike parking at Main Entrance



Bike parking at the West Entrance



LEGEND

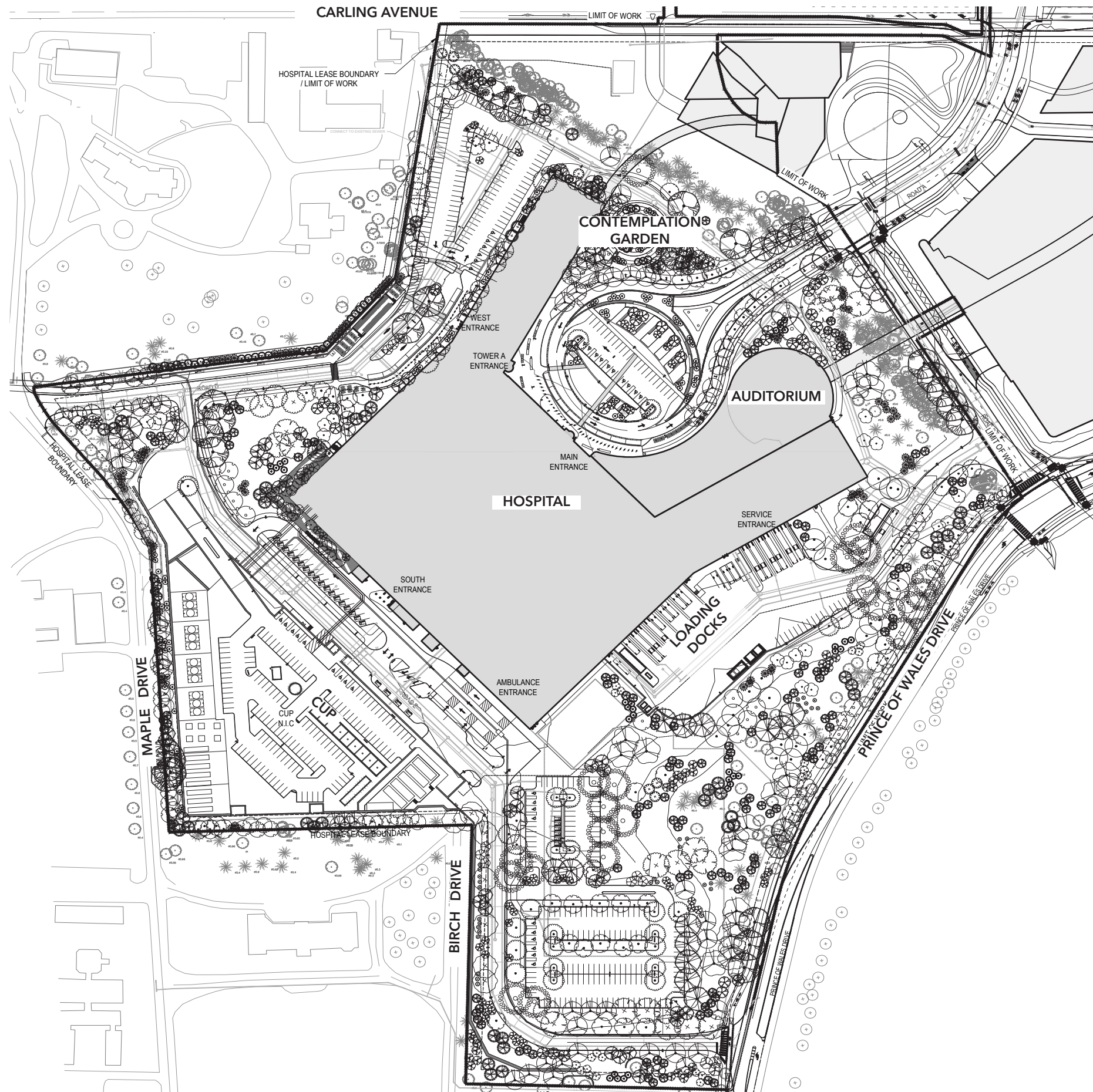
1. WEST PARKING LOT
2. 2A: EMERGENCY & NON-URGENT TRANSPORTATION @ LEVEL E1
2B: MAIN ENTRY PLAZA @ LEVEL 1
3. LOADING DOCK @ LEVEL B
4. EAST PARKING LOT
5. 5A: EMERGENCY / SERVICES SOUTH @ LEVEL E1
5B: EMERGENCY SERVICES EAST @ LEVEL E1
6. CUP ROOFTOP PARKING

Zone No. and Description	Total Parking Count	Included in Total Count		Allocated to:		
		Accessible Parking	Limited Mobility Parking	City Required Minimum Parking	Snow Storage	Surge Capacity
Zone 1 West Parking Lot - Level E1	127	6	12	77	50	
Zone 2A Emergency Parking - Level E1	75	11	12	75		
Zone 2B Main Entry Plaza - Level 1	34	11	6	34		
Zone 3 Loading Dock - Level B	18			18		
Zone 4 East Parking - Remote	140	6	12	52	50	38
Zone 5A Emergency Services Parking - Level E1	25			0		
Zone 5B Emergency Services Parking - Level E1	57	4	4	25		32
Zone 6 CUP Rooftop Parking - Level 1	146	9	18	146		
Total Phase 3 and 4: Hospital + CUP Parking	622	47	64	427		

Notes on City Required Minimum Parking
1. Minimum requirement

3,097





PLANT SCHEDULE			
TREES:	CODE	QTY	BOTANICAL / COMMON NAME
	AC NI	10	Acer nigrum / Black Maple
	AA	20	Acer rubrum 'Armstrong' / Armstrong Red Maple
	AC SU	45	Acer saccharum / Sugar Maple
	AC BL	12	Acer saccharum nigrum / Black Sugar Maple
	CA CO	18	Carya cordiformis / Bitternut Hickory
	CA OV	20	Carya ovata / Shagbark Hickory
	CO	15	Celtis occidentalis / Common Hackberry
	FG	10	Fagus grandifolia / American Beech
	GT	23	Gleditsia triacanthos inermis 'Shademaster' / Shademaster Honey Locust
	GK	21	Gymnocladus dioica / Kentucky Coffeetree
	JC	26	Juglans cinerea / Butternut
	JN	21	Juglans nigra / Black Walnut
	OV	7	Ostrya virginiana / American Hophornbeam
	PR SE	5	Prunus serotina / Black Cherry
	QA	24	Quercus alba / White Oak
	QM	22	Quercus macrocarpa / Burr Oak
	QR	29	Quercus rubra / Red Oak
	TA	15	Tilia americana / Basswood
	UA	5	Ulmus americana / White Elm
MEDIUM TREES	CODE	QTY	BOTANICAL / COMMON NAME
	AO	21	Aesculus glabra / Ohio Buckeye
	BE NI	47	Betula nigra / River Birch Multi-Trunk
	BE PA	28	Betula papyrifera / Paper Birch
	PO TR	9	Populus tremuloides / Quaking Aspen
	PO CA	25	Populus x canadensis / Canada Poplar 'Eugene'
	PR VA	28	Prunus virginiana 'Schubert' / Schubert Chokecherry
	SO AM	33	Sorbus americana / American Mountain Ash
	SY RE	24	Syringa reticulata 'Ivory Silk' / Ivory Silk Japanese Tree Lilac
CONIFERS	CODE	QTY	BOTANICAL / COMMON NAME
	JW	9	Juniperus scopulorum 'Wichita Blue' / Wichita Blue Juniper
	JU VA	93	Juniperus virginiana / Eastern Redcedar
	PG	37	Picea glauca / White Spruce
	PI IF	34	Picea pungens 'Iseli Fastigiata' / Clummar Blue Spruce
	PS	145	Pinus strobus / White Pine
SMALL TREES	CODE	QTY	BOTANICAL / COMMON NAME
	AG	122	Amelanchier x grandiflora 'Autumn Brilliance' / Autumn Brilliance Apple Serviceberry
	CE	37	Cercis canadensis / Eastern Redbud Multi-trunk
	MA RA	11	Malus x 'Radiant' / Radiant Crabapple
	MR	48	Malus x 'Rudolph' / Rudolph Flowering Crabapple
	MS	30	Malus x 'Spring Snow' / Spring Snow Crabapple



MASTER GROUND PLANE PLANT LIST													
Botanical Name	Common Name	"Cont./ Cal. Size"	Root Condition	Potential Mature Tree Size (Meters)		Native	Field Condition	Salt Tolerance	Wet/Dry Tolerance	Sun/Shade Tolerance	Street Trees	Remarks	SPREAD AT MATURITY
				Height	Spread								
Shade Trees	Shade Trees			Height	Spread	Y/N		T-Tolerant, M-Medium S-Sensitive			Y/N		
Acer nigrum	Black Maple	50mm	B & B	20	14	Y	Single Stem	S	Wet/Dry	Sun/Shade			9.3380
Acer rubrum	Red Maple	50mm	B & B	20	15	Y	Single Stem	S	Wet/Dry	Sun/Pt Shade			10.0050
Acer saccharinum	Silver Maple	50mm	B & B	24	24	Y	Single Stem	M/S	Wet/Moist	Full Sun			16.0080
Acer saccharum	Sugar Maple	50mm	B & B	20	15	Y	Single Stem	S	Moist to average	Full Sun	Y		10.0050
Carya cordiformis	Bitternut Hickory	50mm	B & B	20	10	Y	Single Stem	M	Moist/Dry	Pt Shade			6.6700
Carya ovata	Shagbark Hickory	50mm	B & B	20	20	Y	Single Stem	M	Moist to average	Full Sun/Pt Shade			13.3400
Catalpa sp.	Northern Catalpa	50mm	B & B	15	15	N	Single Stem	S	Moist/Dry	Sun	N	Carolinian species	10.0050
Fagus grandifolia	American Beech	50mm	B & B	22	18	Y	Single Stem	S	Dry-Moist	Sun-Part Shade		Carolinian Sp.	12.0060
Ginkgo biloba	Ginkgo	50mm	B & B	15	8	N	Single Stem	T	Moist/Dry	Sun/Pt Shade			5.3360
Gleditsia triacanthos	Honey Locust	50mm	B & B	18	16	Y	Single Stem	T	Moist to average	Sun/Pt Shade	Y		10.6720
Gymnocladus dioica	Kentucky Coffeetree	50mm	B & B	20	14	Y	Single Stem	T	Moist to average	Full Sun	Y		9.3380
Juglans nigra	Black Walnut	50mm	B & B	25	20	Y	Single Stem	S	Wet/Moist	Full Sun			13.3400
Juglans cinerea	Butternut	50mm	B & B	18	12	Y	Single Stem		Wet/Moist	Full Sun			8.0040
Liriodendron tulipifera	Tulip Poplar	50mm	B & B	25	15	N	Single Stem	S	Moist/Dry	Full Sun	N	Carolinian species	10.0050
Populus x canadensis	Canada Poplar	50mm	B & B	20	17	N	Multi-Stem	T	Moist-Wet	Sun		50% rating - Quebec Study; Difficult to locate.	11.3390
Prunus serotina	Black Cherry	50mm	B & B	20	10	Y	Single Stem	S	Moist	Full Sun			6.6700
Quercus alba	White Oak	50mm	B & B	25	25	Y	Single Stem	T	Moist/Dry	Full Sun			16.6750
Quercus macrocarpa	Burr Oak	50mm	B & B	20	20	Y	Single Stem	T	Moist/Dry	Full Sun	Y		13.3400
Quercus rubra	Red Oak	50mm	B & B	24	24	Y	Single Stem	T	Moist/Dry	Full Sun	Y		16.0080
Sassafras albidum	Sassafras	50mm	B & B	15	9		Single Stem	S	Moist/Dry	Sun/Shade		Carolinian species	6.0030
Tilia americana	Basswood	50mm	B & B	15	15	Y	Single Stem	S/M	Moist/Dry	Sun/Partical Shade	Y		10.0050
Ulmus americana spp	American Elm cultivar	50mm	B & B	25	20	Y	Single Stem	T	Moist/Dry	Sun/Partical Shade	Y		13.3400
Medium Trees	Medium Trees	Cont./Cal. Size	Root Condition	Height (Meters)	Spread (Meters)	Native	Field Cond.	Salt Tolerance	Wet/Dry Tolerance	Sun/Shade Tolerance	Street Trees	Remarks	
Acer pensylvanicum	Striped Maple	50mm	B & B	7	5	Y	Multi-Stem		Wet-Moist	Part Sun/Shade			3.3350
Aesculus glabra	Ohio Buckeye	50mm	B & B	8	6	Y	Single Stem	T	Dry-Moist	Sun-Part Shade			4.0020
Aesculus hippocastanum	Horse Chestnut	50mm	B & B	16	12	Y	Single Stem	T	Moist/Dry	Full Sun/Pat Shade			8.0040
Betula lenta	Sweet Birch	50mm	B & B	20	14	Y	Multi-Stem	M	Wet-Moist	Sun			9.338000
Betula neoalaskana	Alaska Birch	50mm	B & B	15	11	Y	Multi-Stem	S	Wet			Difficult to locate in nurseries	7.337000
Betula nigra	River Birch Multi-Trunk	50mm	B & B	15	11	Y	Multi-Stem	S	Moist	Sun/Part Shade			7.3370
Betula papyrifera	Paper Birch	50mm	B & B	20	14	Y	Multi-Stem	S	Dry-Moist	Sun/Part Shade			9.3380
Betula populifolia	Gray Birch	50mm	B & B	10	6	Y	Multi-Stem	T/M	Dry-Wet	Sun			4.0020
Carpinus caroliniana	Blue -Beech	50mm	B & B	8	7	Y	Single Stem	-	Moist	Part Sun/Shade			4.6690
Celtis occidentalis	Common Hackberry	50mm	B & B	15	8	Y	Single Stem	T/M	Moist-Dry	Part Sun/Shade	Y		10.0050
Ostrya virginiana	American Hophornbeam	50mm	B & B	12	8	Y	Single Stem	T	Moist	Sun/Shade			5.3360
Populus tremuloides	Quaking Aspen	50mm	B & B	12	8	Y	Multi-Stem	T/M	Moist-Wet	Sun/Part Shade			5.3360
Evergreen Trees	Evergreen Trees	Height (cm)	Root Condition	Height (Meters)	Spread (Meters)	"Native to Ontario/ Non-native"	Field Cond.	Salt Tolerance	Wet/Dry Tolerance	Sun/Shade Tolerance	Street Trees	Remarks	
Juniperus virginiana	Eastern Redcedar	200cm	B & B	15	6	Y	Single Stem	T	Dry-Moist	Sun			4.0020
Larix laricina	Tamarack	200cm	B & B	20	10	Y	Single Stem	T	Dry-Wet	Sun			6.6700
Picea glauca	White Spruce	200cm	B & B	22	10	Y	Single Stem	T	Dry-Moist	Sun		Mixed, 5 gal. to 1800mm	6.6700
Pinus strobus	White Pine	200cm	B & B	20	7	Y	Single Stem	S	Dry-Moist	Sun			4.6690
Thuja occidentalis	Northern White-Cedar	200cm	B & B	12	4	Y	Single Stem	M	Dry-Moist	Sun			2.6680
Abies concolor	White Fir	200cm	B & B	15	5		Single Stem	S	Dry-Moist	Sun/Part Shade			3.3350
Picea pungens	Blue Spruce	200cm	B & B	20	8		Single Stem	T	Moist	Sun/Part Shade			5.3360
Tsuga canadensis	Eastern Hemlock	200cm	B & B	20	12	Y	Single Stem	S	Dry-Wet	Sun/Part Shade			8.0040
Small Trees	Small Trees	Cont./Cal. Size	Root Condition	Mature Height	Mature Spread	"Native to Ontario/ Non-native"	Field Cond.	Salt Tolerance	Wet/Dry Tolerance	Sun/Shade Tolerance	Street Trees	Remarks	
Acer spicatum	Mountain Maple	50mm	B & B	6	4	Y	Multi-Stem	S	Dry-Moist	Part Sun			2.6680
Amelanchier canadensis	Canadian Serviceberry	50mm	B & B	7	4	Y	Multi-Stem	S	Dry-Wet	Sun-Shade	Y		2.6680
Asimina triloba	Paw Paw Tree	50mm	B & B	7	3	Y	Multi-Stem	S	Moist	Sun-Shade		Carolinian sp.	2.0010
Cercis canadensis	Eastern Redbud	50mm	B & B	9	11	Y	Multi-Stem	S	Moist	Sun/Part Shade			7.3370
Cornus alternifolia	Alternate-leaved Dogwood	50mm	B & B	7	11	Y	Multi-Stem	M	Moist-Wet	Sun/Shade			7.3370
Crataegus crus-galli inermis	Thornless Hawthorn	50mm	B & B	7	7	Y	Single Stem		Dry-Moist	Sun	Y		4.6690
Malus spp.	Crabapple cultivar	50mm	B & B	8	8	N	Single Stem		Dry-Moist	Sun	Y		5.3360
Prunus virginiana	Chokecherry	50mm	B & B	7	6		Single Stem		Dry	Part Sun/Shade			4.6690
Prunus nigra	Canada Plum	50mm	B & B	6	3	Y	Single Stem					Difficult to find	2.0010
Sorbus americana	American Mountain Ash	50mm	B & B	7	5	Y	Single Stem		Moist	Sun			3.3350
Syringa reticulata 'Ivory Silk'	Ivory Silk Tree Lilac	50mm	B & B	8	5	N	Single Stem	M	Dry-Moist	Sun/Part Shade	Y		3.3350
Viburnum lentago	Nannyberry	50mm	B & B	3	3	Y	Multi-Stem		Dry-Moist	Sun/Shade			2.0010

Shrubs	Shrubs	Cont./Cal. Size	Root Condition			Native		Salt Tolerance		Sun/Shade Tolerance		Remarks
Aronia arbutifolia	Red Chokeberry	20L	Cont					T		Sun/P Shade		
Ceanothus americanus	New Jersey Tea	20L	Cont					T		Sun/P Shade		
Cephalanthus occidentalis 'SMCOSS' TM	Sugar Shack Buttonbush	20L	Cont					T		Sun/P Shade		
Comptonia peregrina	Sweet Fern	10L	Cont					T		Sun/P Shade		
Cornus sericea	Red Twig Dogwood	10L	Cont					T		Sun/P Shade		
Hamamelis virginiana	Common Witch Hazel	20L	Cont					T		Sun/P Shade		
Ilex verticillata	Winterberry	10L	Cont					S		Sun/P Shade		
Itea virginica 'SMNIVDFC' TM	Scentlandia Sweetspire	20L	Cont					T		Sun/P Shade		
Lindera benzoin	Spicebush	20L	Cont					T		Sun/P Shade		
Physocarpus opulifolius	Ninebark	20L	Cont					T		Sun/P Shade		
Rhododendron viscosum	Swamp Azalea	20L	Cont					T		Sun/P Shade		
Rhus typhina	Staghorn Sumac	10L	Cont					T		Sun/P Shade		
Symphoricarpos albus	Common White Snowberry	20L	Cont					M		Sun/P Shade		
Taxus canadensis	Canadian Yew	10L	Cont							Sun/P Shade		
Vaccinium angustifolium	Lowbush Blueberry	10L	Cont			Y		M		Sun/P Shade		
Viburnum acerifolium	Mapleleaf Viburnum	10L	Cont							Sun/P Shade		
Viburnum dentatum 'Arrowwood'	Arrowwood Viburnum	20L	Cont					T		Sun/P Shade		
Viburnum lantanoides	Hobblebush	20L	Cont			Y		S		Sun/P Shade		
Viburnum lentago	Nannyberry	20L	Cont			Y		T		Sun/P Shade		
Viburnum nudum 'Cassinoides'	Wild Raisin	20L	Cont			Y		S		Sun/P Shade		
Aronia melanocarpa	Black Chokeberry					Y						
Ground Covers	Ground Covers	Spacing										
Andropogon gerardii	Big Bluestem	450mm O.C.										
Aquilegia canadensis	Eastern Columbine	450mm O.C.										
Arctostaphylos uva-ursi	Kinnikinnick	450mm O.C.										
Asarum canadense	Wild Ginger	450mm O.C.										
Aster alpinus	Alpine Aster	450mm O.C.										
Bouteloua curtipendula	Side Oats Grama	450mm O.C.										
Calamagrostis canadensis	Bluejoint Grass	450mm O.C.										
Carex albursina	White Bear Sedge	450mm O.C.										
Carex eburnea	Bristleleaf Sedge	450mm O.C.										
Carex platyphylla	Broadleaf Sedge	450mm O.C.										
Chasmanthium latifolium	Northern Sea Oats	450mm O.C.										
Comptonia peregrina	Sweet Fern	450mm O.C.										
Cornus canadensis	Bunchberry Dogwood	450mm O.C.										
Deschampsia cespitosa	Tufted Hair Grass	450mm O.C.										
Elymus hystrix	Bottlebrush Grass	450mm O.C.										
Elymus riparius	Riverbank Rye	450mm O.C.										
Festuca saximontana	Rocky Mountain Fescue	450mm O.C.										
Fragaria vesca	Woodland Strawberry	450mm O.C.										
Gaultheria procumbens	Wintergreen	450mm O.C.										
Hierochloa odorata	Sweetgrass	450mm O.C.										
Iris sibirica	Siberian Iris	100mm pot										
Juncus effusus pylaei	Soft Rush	450mm O.C.										
Maianthemum canadense	Canada Mayflower	450mm O.C.										
Mitchella repens	Partridge Berry	450mm O.C.										
Panicum virgatum	Switch Grass	450mm O.C.										
Schizachyrium scoparium	Little Bluestem	450mm O.C.										
Solidago canadensis	Goldenrod	450mm O.C.										
Sorghastrum nutans	Indian Grass	450mm O.C.										
Spartina pectinata	Prairie Cordgrass	450mm O.C.										
Sporobolus heterolepis	Prairie Dropseed	450mm O.C.										
Trillium ovatum	Coast Trillium	450mm O.C.										

Deciduous Trees



Acer saccharum - Sugar Maple



Quercus rubra - Red Oak



Betula papyrifera - White Birch



Amelanchier - Serviceberry



Acer nigrum - Black Maple



Cercis canadensis - Eastern Redbud

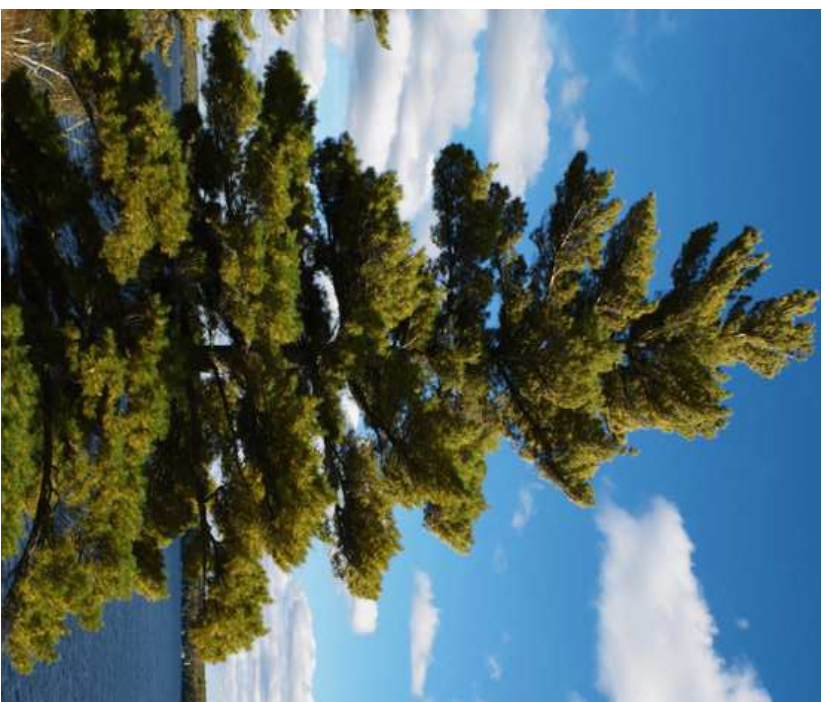


Cornus alternifolia - Alternate-leaved Dog-



Prunus Americana - American plum, wild

Evergreens



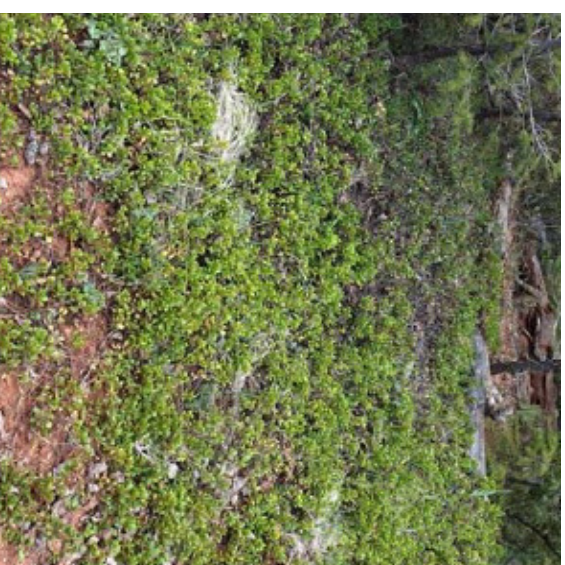
Pinus strobus - Eastern White Pine



Juniperus virginiana - Eastern Red Cedar

Mixed Woods Understory

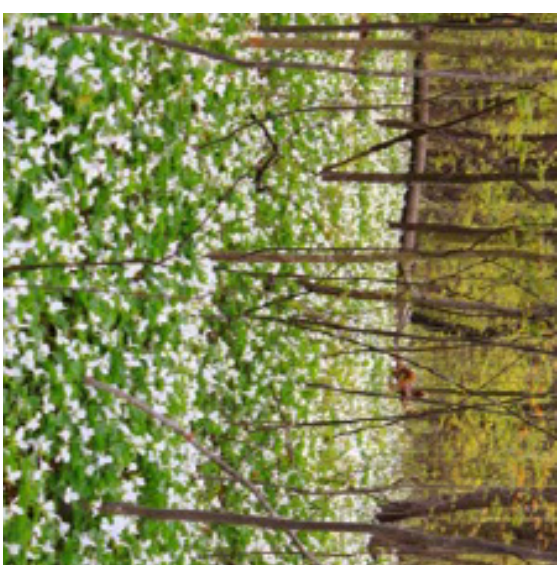
Arctostaphylos uva-ursi- Bearberry



Adiantum- Madenhair Fern



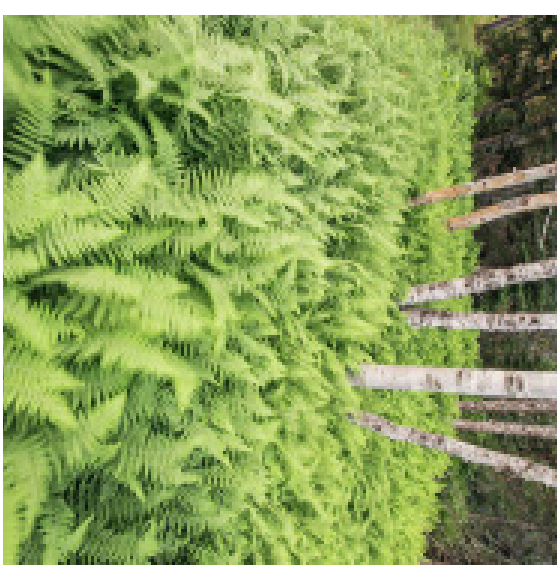
Melanthiaceae- Trillium



Tiarella- Foam Flower

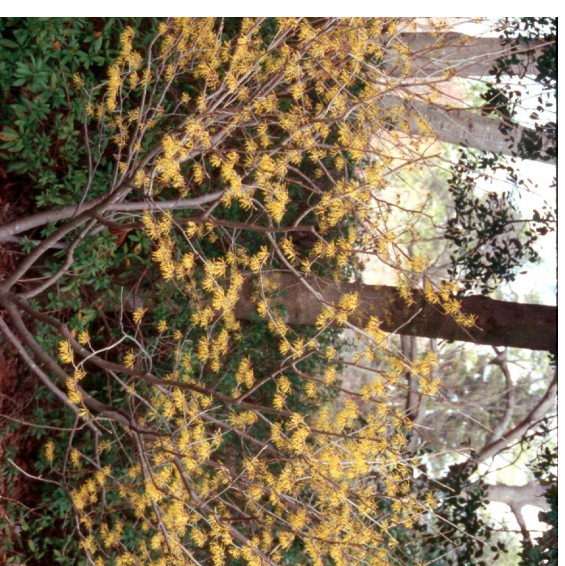


Vaccinium Angustifolium - Lowbush



Matteuccia struthiopteris -Ostrich

Co-dominant Understory



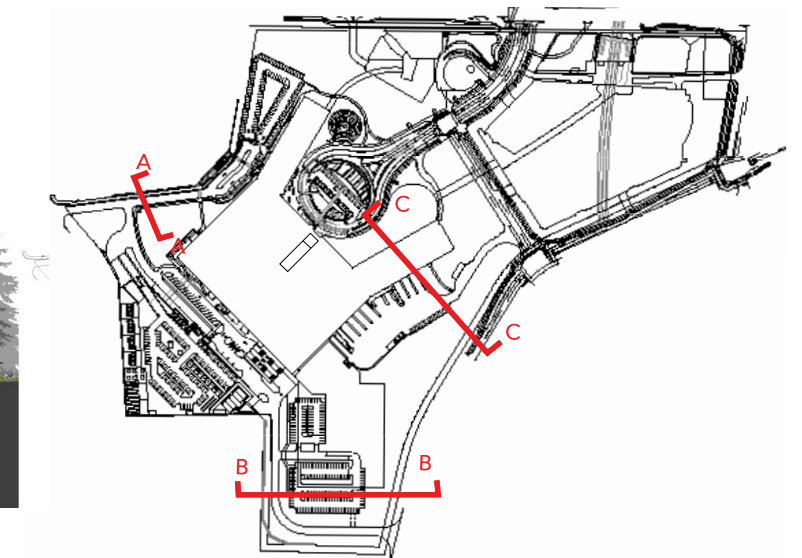
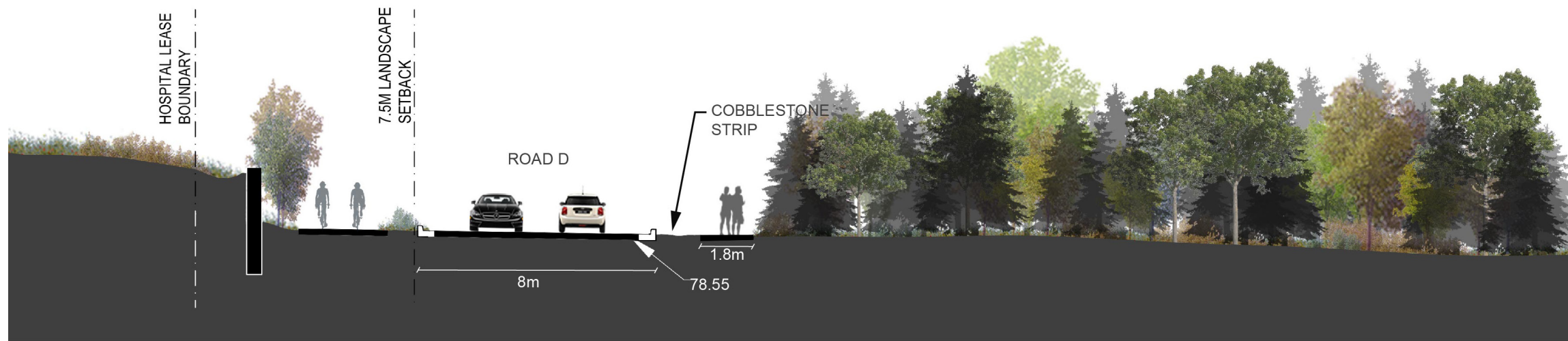
Hamamelis virginiana - American Witch-



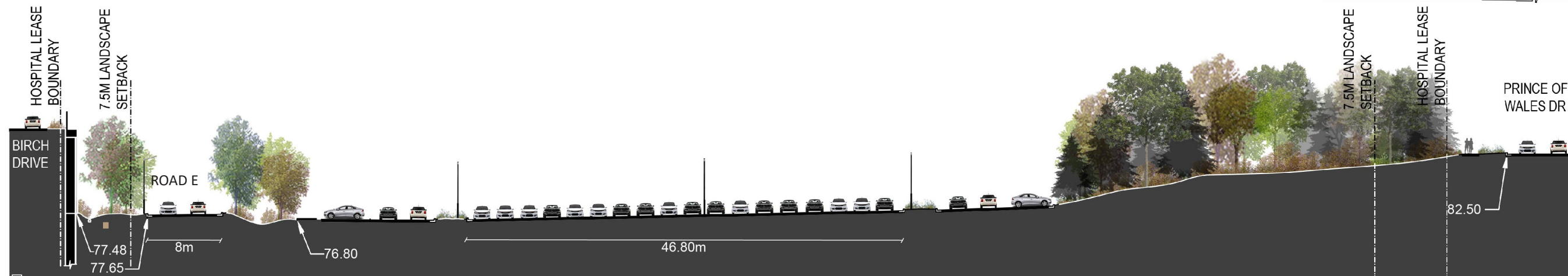
Viburnum acerifolium -Mapleleaf



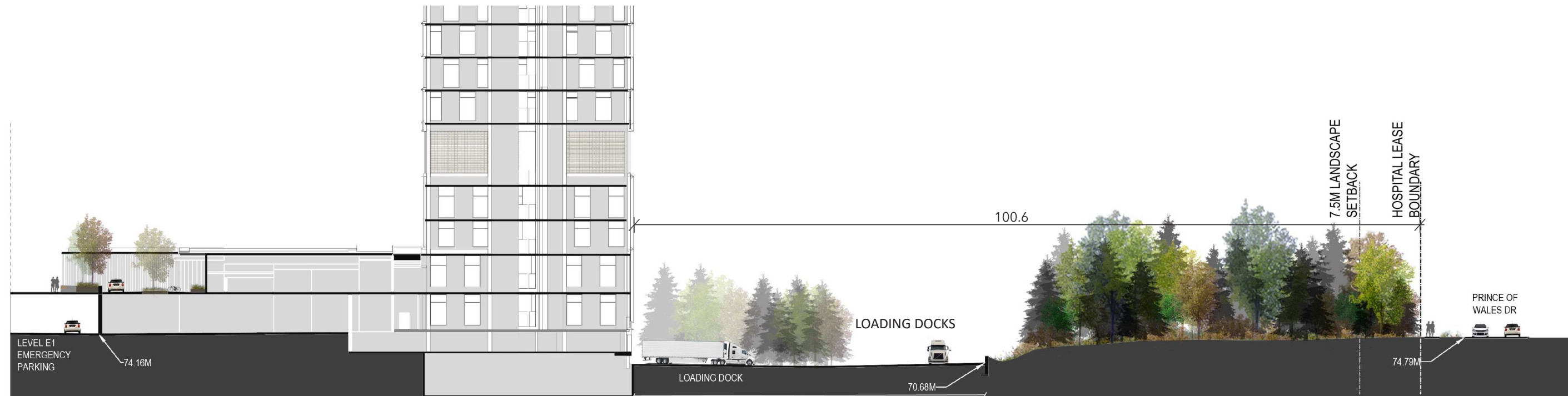
Rhus aromatica-Tufted Hairgrass



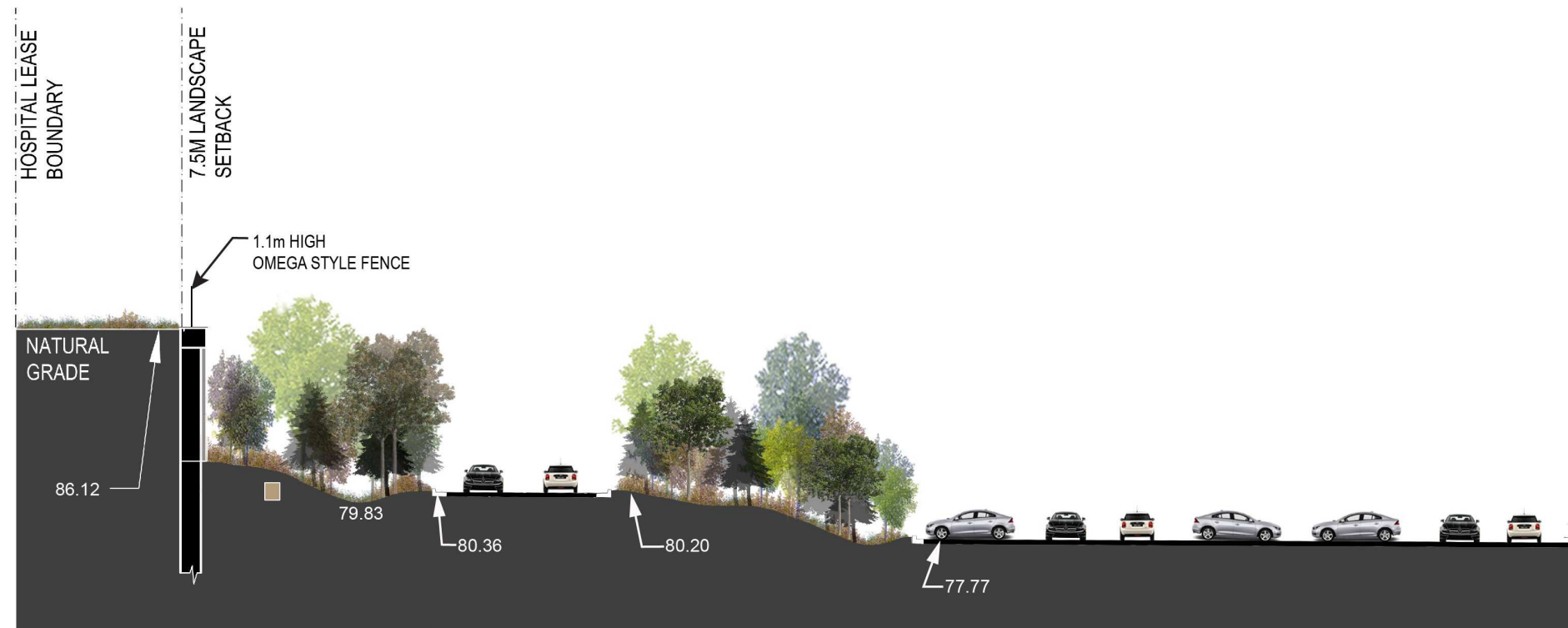
SECTION A



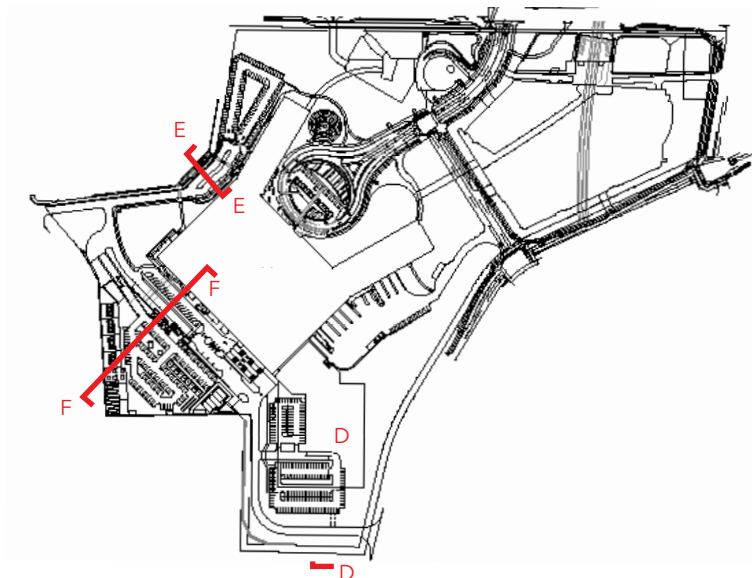
SECTION B



SECTION C



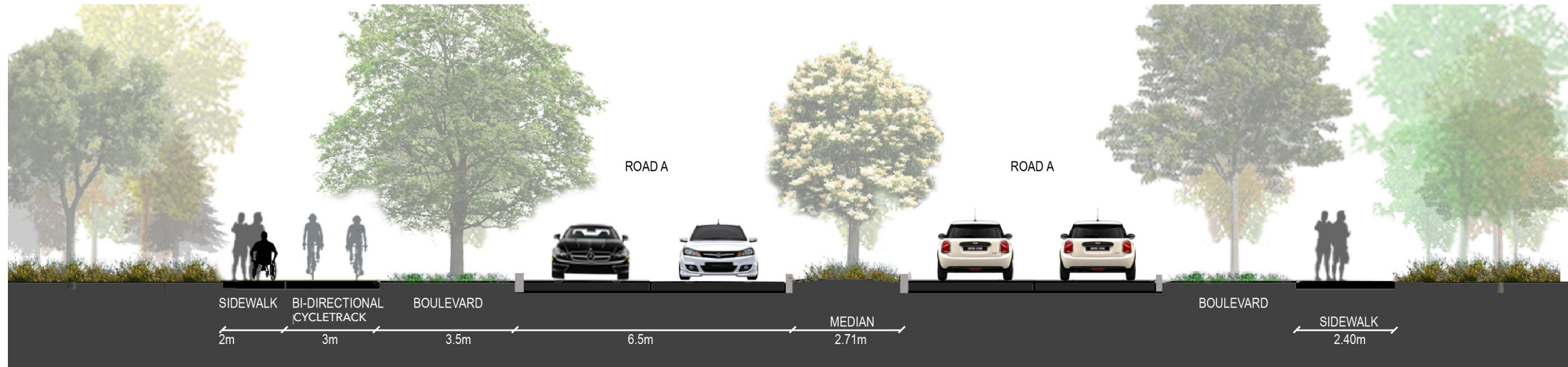
SECTION D



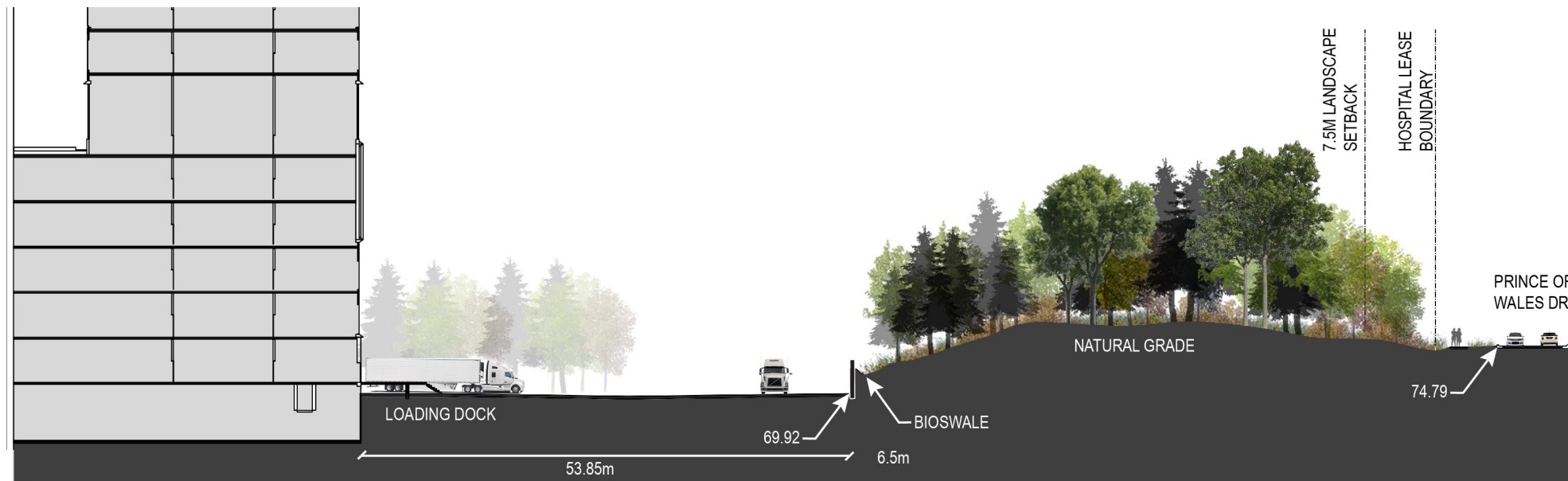
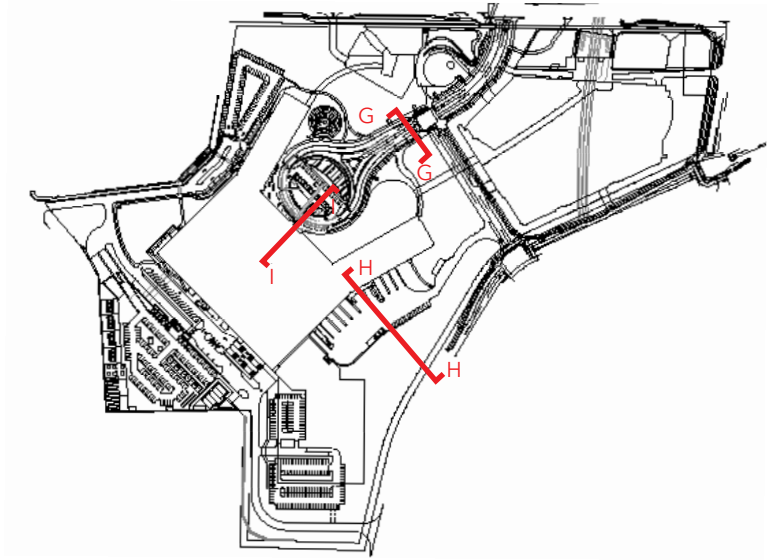
SECTION E



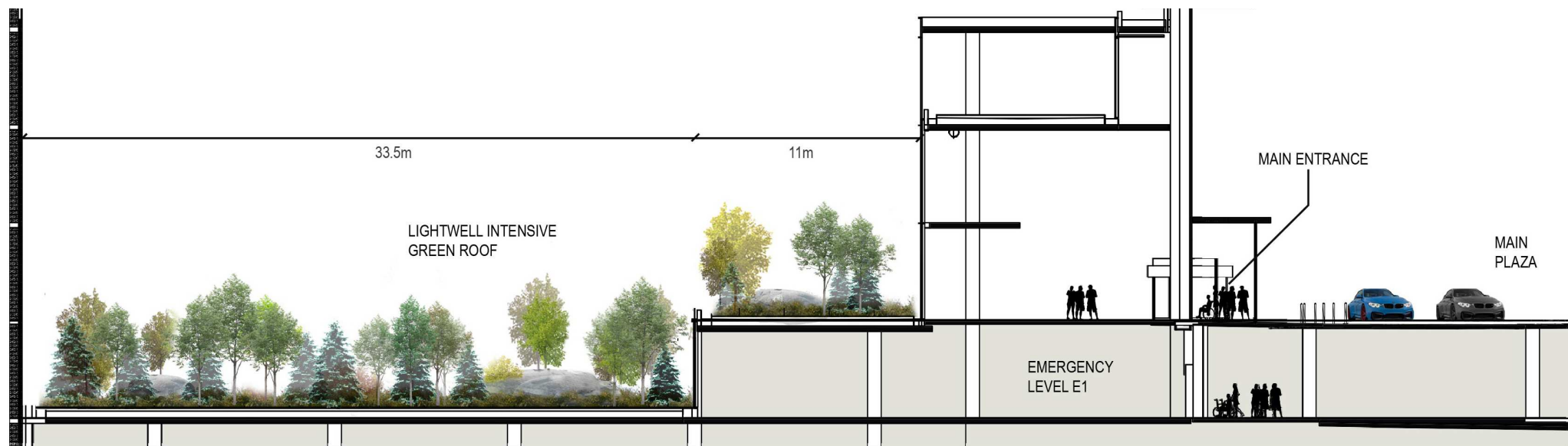
SECTION F



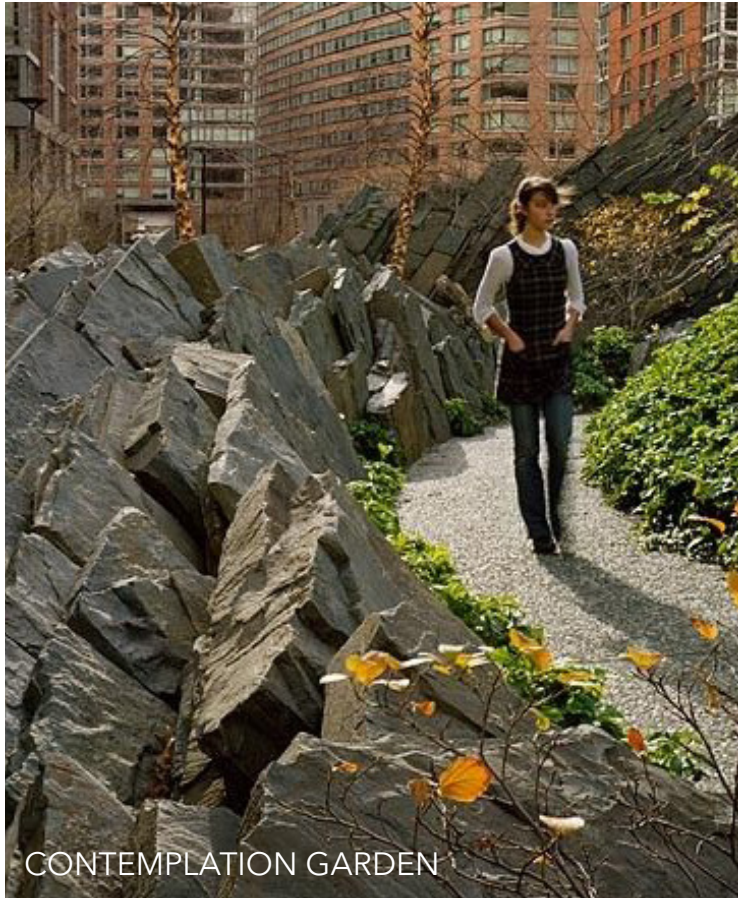
SECTION G



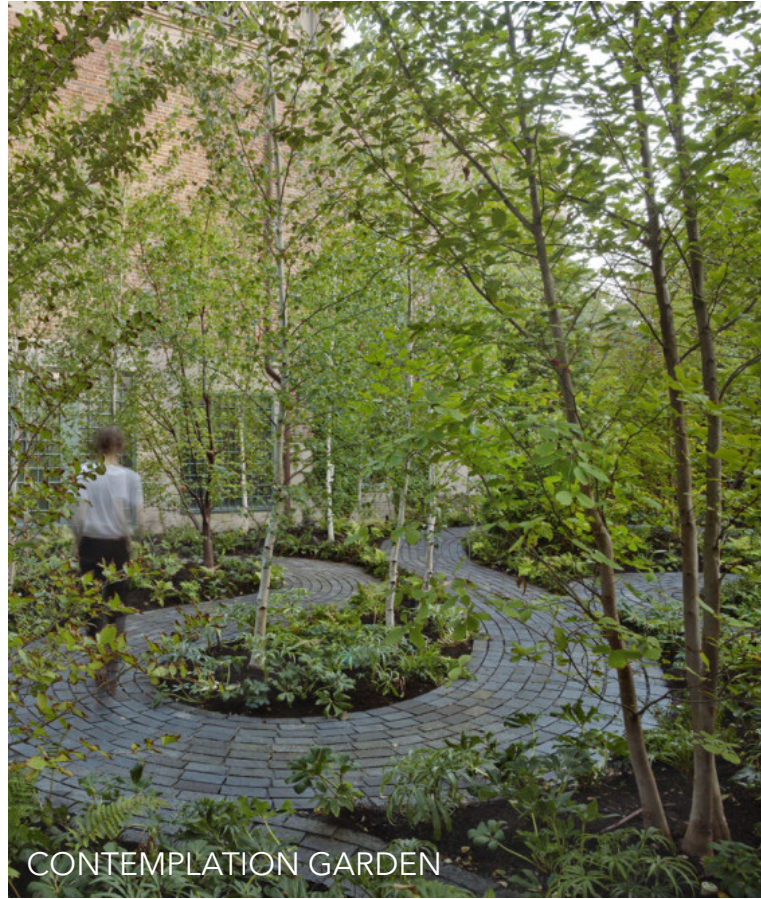
SECTION H



SECTION I



CONTEMPLATION GARDEN



CONTEMPLATION GARDEN



WESTSIDE LANDSCAPE



ENTRY PLAZA



GREEN ROOF



ALVAR GRASSLAND PLANTING



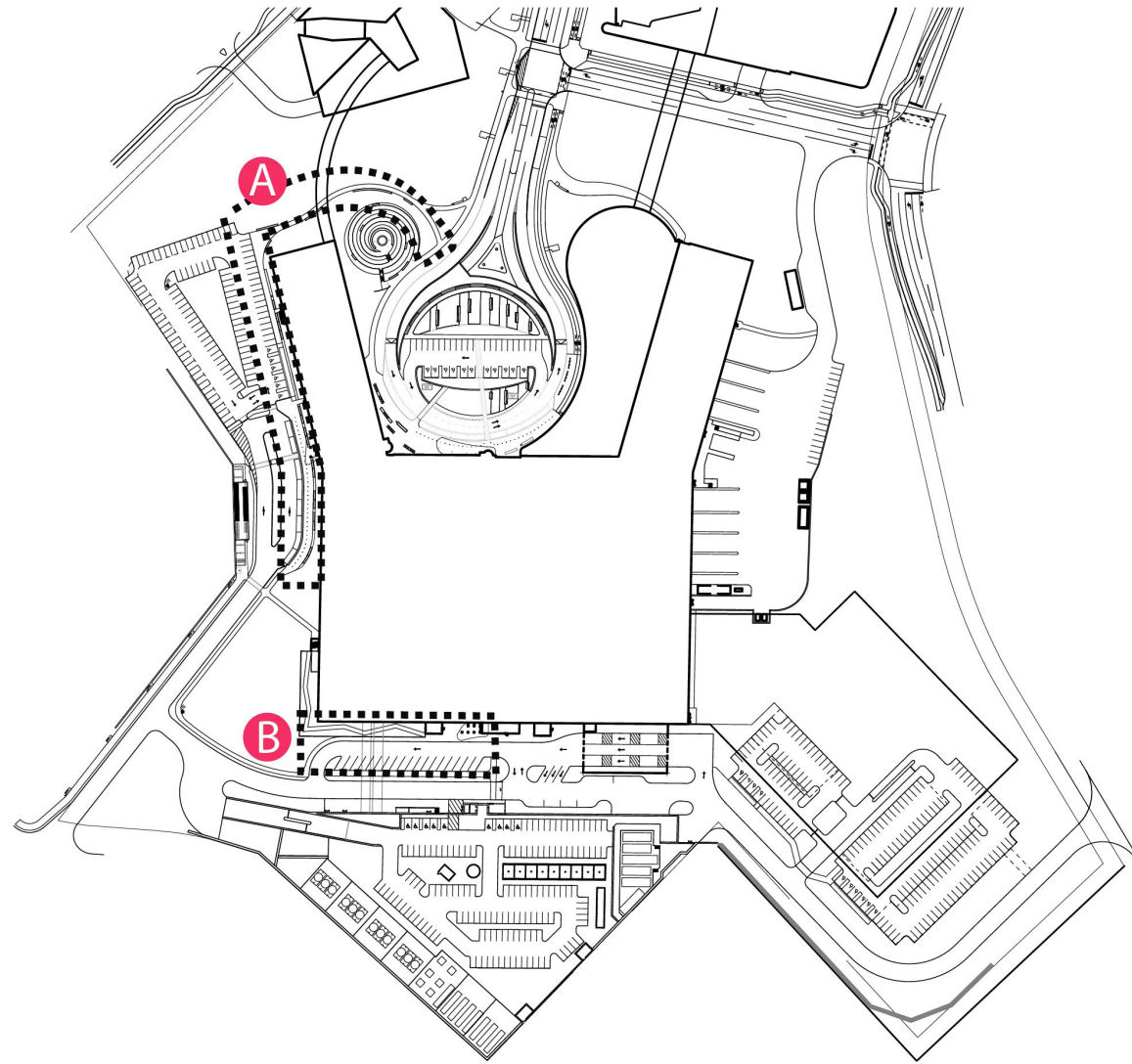
ALVAR GRASSLAND PLANTING



SUNKEN GARDEN (INSIDE VIEW)

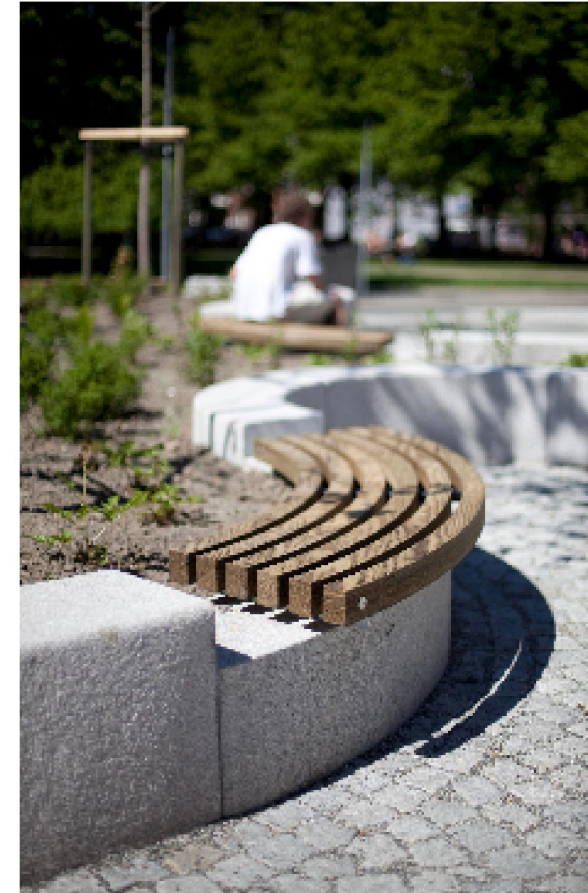


SUNKEN GARDEN (OUTSIDE VIEW)



Monoline Litter Bin is a dual stream aluminum frame litter bin with a 36 gal capacity" the dimensions are 27"x14"x42"H4

Benches



Source: Vestre

A *Via Benches* are versatile benches that consist of straight and curved bench modules that can be used on their own or joined in rows, formations and circles. The benches can be supplied with LED lighting fitted under the seat and have a customizable length, depth, and radius. These benches will be flush mounted on a seat wall providing a comfortable place to rest while permitting a variety of seat heights



Source: Streetlife

B *Solid Staple Benches* comprise sturdy, crosswise-positioned solid slats (7x7 cm – 2.8"x-2.8") on an integrated steel structure. The benches have a slender design, but have a powerful architectural impact. The steel base structure is powder coated in a RAL colour. Despite its slender appearance, the bench is strong and rigid.



Views Analysis - Referenced Views #1

View from Prince of Wales Drive - Extensive existing tree cover and landscaping in addition to enhanced plantings along the west side of Prince of Wales Drive fully shroud the lower floors of Tower B year round when viewed by pedestrians, cyclists and vehicles traveling along this scenic drive.



Views Analysis - Referenced Views #2

View from intersection of Prince of Wales Drive and Road B - Tower B extends upward from the loading area that is fully shrouded by existing and proposed plantings along Prince of Wales Drive.



Views Analysis - Keyplan



Views Analysis - Referenced Views #3

View from intersection of Prince of Wales Drive and Preston Street - Tower B extends upward beyond The Park, Highline LRT Link and Parkade Structure in the foreground.



Views Analysis - Referenced Views #4

View east from the intersection of Carling Avenue and Maple Drive - Tower A aligns well with the mass and height of the Dominion Observatory buildings in the foreground.



Views Analysis - Referenced Views #5

View from Queen Elizabeth Driveway near Commissioners Park looking southwest through Dow's Lake - Tower B extends upward behind the Dow's Lake Pavilion, yet lower than the adjacent residential development as part of the Preston Carling District.



Views Analysis - Referenced Views #6

View from Maple Drive including the Photo Equatorial Building as part of the Dominion Observatory in the foreground. Tower A spans the background in-line with the scale of the tree line beyond.



Views Analysis - Key plan



Views Analysis - Referenced Views #7

View from adjacent to the Saunders Building looking north - Tower B appears from behind the existing mature tree cover with the podium extending westward behind the existing tree cover.



Views Analysis - Referenced Views #8a

View from Maple Drive north toward the Hospital - Tower A and the Podium are located in the background beyond the existing mature tree cover along the north edge of Maple Drive. Tower B is located behind the trees shown at approximately 30 year maturity.



Views Analysis - Referenced Views #8b

View from Maple Drive north toward the Hospital in winter, showing approximate 10-year plant growth within the proposed shelter belt. Tower B is shown at right, Tower A at left.



Views Analysis - Referenced Views #8c

View from Maple Drive north toward the Hospital in winter, showing approximate 20-year plant growth within the proposed shelter belt. Tower B is shown at right, Tower A at left.



Views Analysis - Key plan



Views Analysis - Referenced Views #8d

View from Maple Drive north toward the Hospital in winter, showing approximate 30-year plant growth within the proposed shelter belt. Tower B is shown at right, Tower A at left.



The Hospital as viewed by day from the northwest including the existing mature trees of the escarpment in the foreground, Main Plaza and Pavilion at the center and the Main Concourse and Entrance flanked by Towers A and B beyond.



The Hospital as viewed by evening from the north west including the existing mature trees of the escarpment in the foreground, Main Plaza and Pavilion at the center and the Main Concourse and Entrance flanked by Towers A and B beyond.



Illustration depicts the legibility and character of this arrival landscape during daytime



Illustration depicts the legibility and character of this arrival landscape during evening.



Future Urban Plaza with the curving steps and sit out court - Fall



Future Urban Plaza with the curving steps and sit out court - Winter



Section through stone contemplation garden

Section through the contemplation garden and the woodland path. Portions of the path to provide close access to the escarpment's mature trees, while also ensuring the health and safety of the trees by not building within their root zones.



Plan of stone contemplation garden

Illustration shows a plan view of the contemplation garden in the context of the site. From the hospital's main entrance, a loop of connected landscape spaces provides access to the central gathering area.



Stone contemplation garden

Upper Spiral Path at Contemplation Garden illustrates the nature of the spiral ramp. This particular view is from upper portion of the spiral path looking towards the lower levels.



Lower Spiral Path at Contemplation Garden

Illustrates the character of the lower section of the spiral ramp. This view also demonstrates the various parts of the spiral path assembly, including, curb, hand-rail, native planting terrace, and stone slab retaining wall.



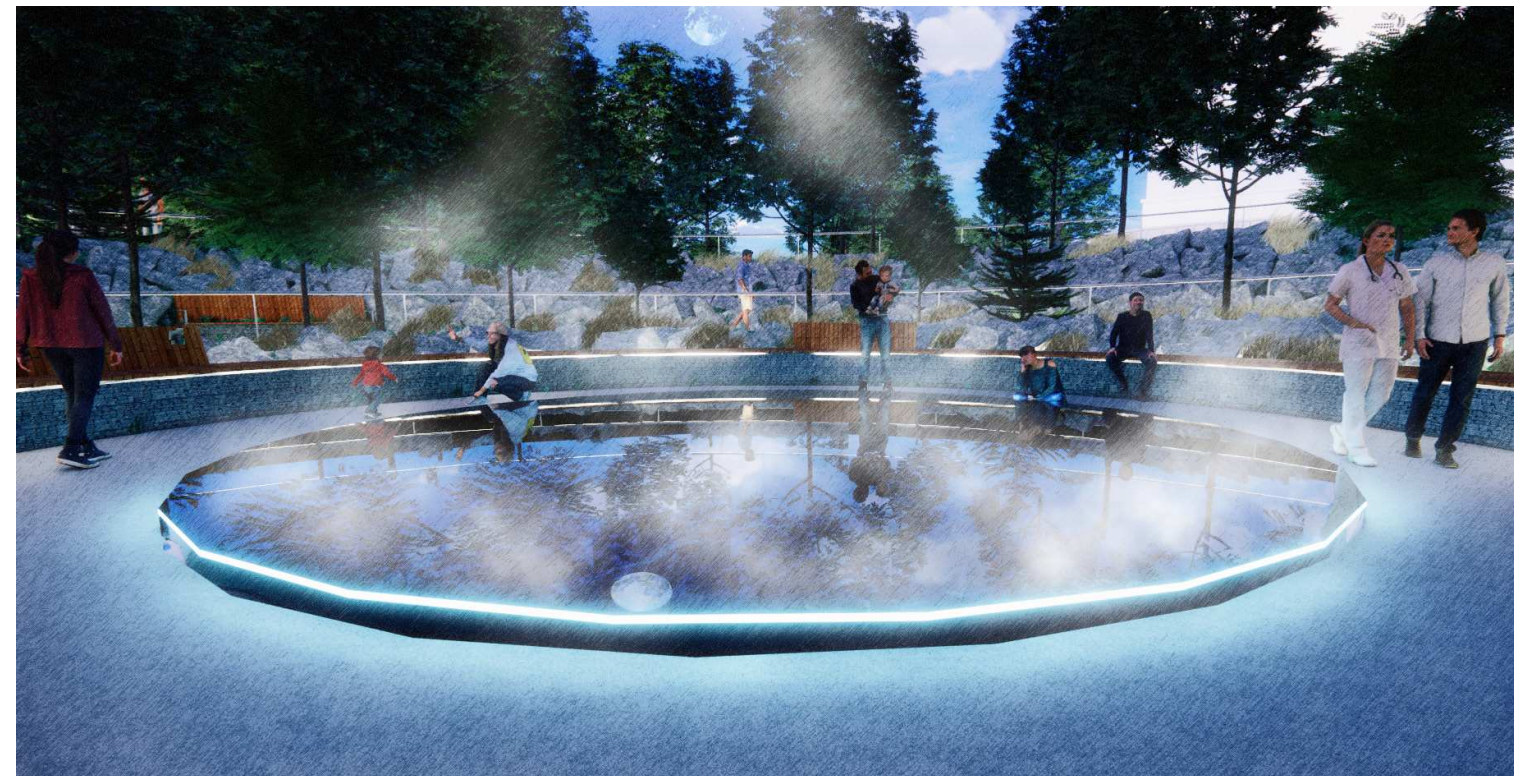
Illuminated handrail along spiral path

An illuminated handrail allowing visitors to use the space after dark. It also allows the space to be viewed at night from the adjacent bed tower.



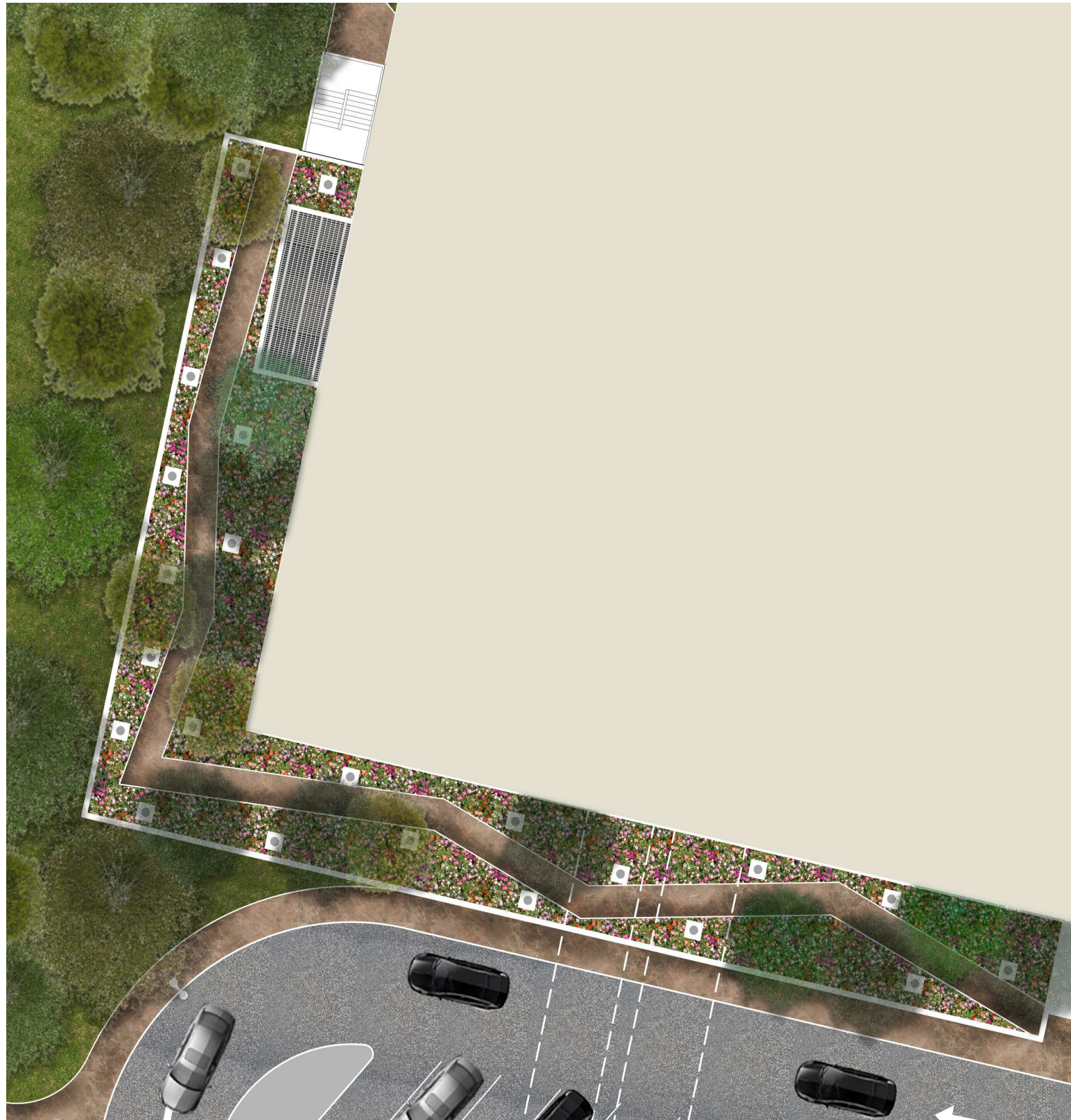
Lower Spiral Path at Contemplation Garden

Shows the terminus of the spiral path, the lower plaza with potential reflection pool ringed by wood-topped stone bench accommodating a range of sitting postures and heights.



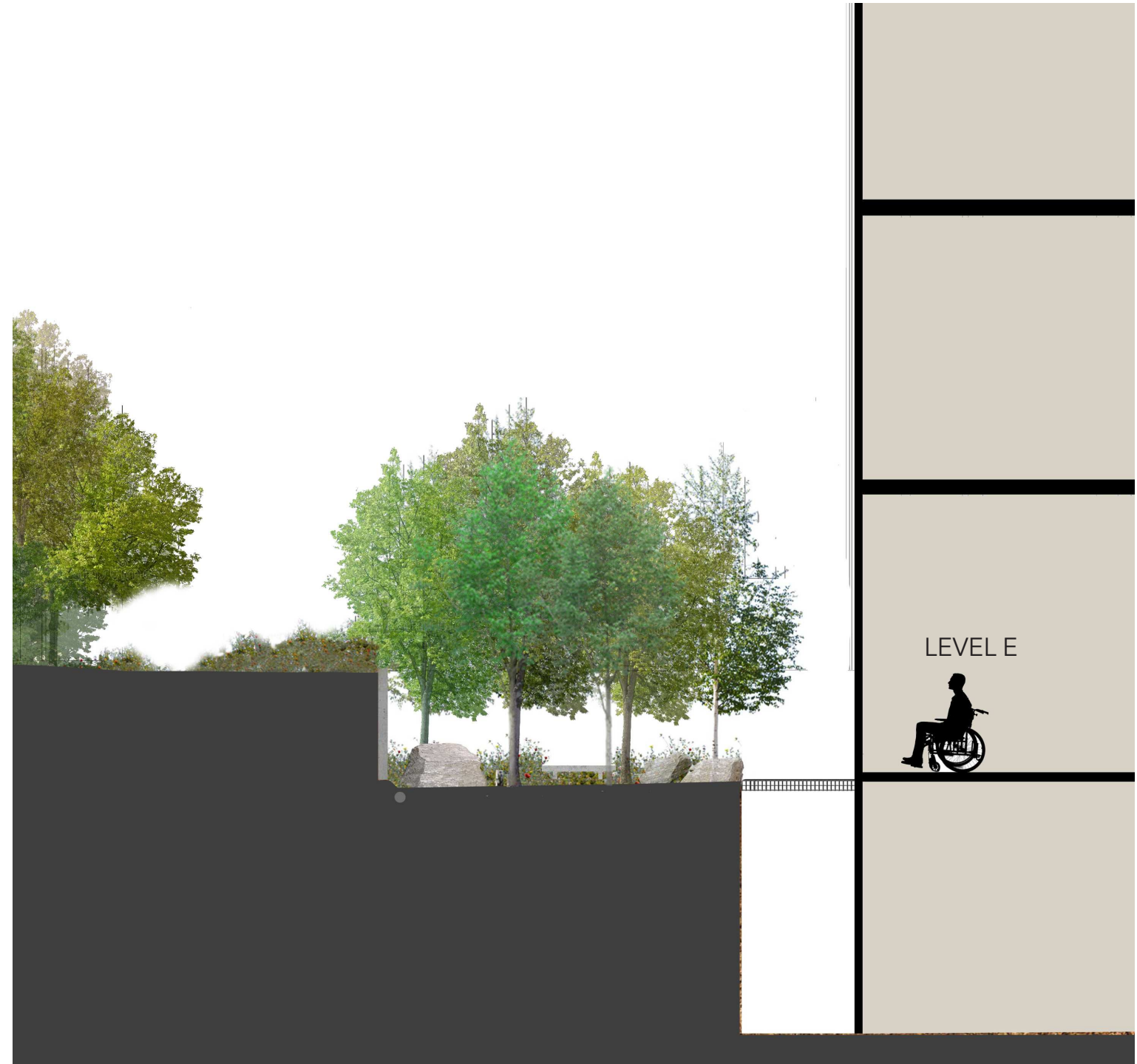
Stone Contemplation Garden

Lower Plaza and reflecting pool at Contemplation Garden illustrates the experience of the lower plaza in the early evening hours.



Enlarged Plan at Sunken Garden

This garden provides a protected, calming view for Dialysis patients on Level E1 of the Hospital. Garden walls mitigate views of parking and roadways.



Section of Sunken Garden

This section demonstrates the inside/outside nature of this landscape feature.



Sunken Garden

Demonstrates a typical inside/out-side encounter with a sunken garden.



Sunken Garden

Shows an understory of ferns, sedges, and woody shrubs with an overstory of white birch. An elevated path provides maintenance and visual interest, not for public use.

Lighting Design Concept

Lighting for the campus is designed to convey intention. It will support visual performance and safety while enhancing intuitive way-finding, encouraging exploration of pathways and inspiring interaction with the natural environment and cultural artwork displays.

Lighting systems are not designed to be the focal point, but rather to focus attention on natural and architectural elements. A primary goal of the lighting design is to create a welcome destination that transitions the urban built environment to the natural and scenic vistas.

Another primary goal of the lighting design is to limit sky glow and light trespass onto adjacent sites as well as into the hospital itself. Proper placement and control of site lighting will enhance evening views while mitigating night time light contribution into patient sleeping rooms.

Site lighting is designed to be directed downwards in support of a dark night sky and bird-friendly practices. All site lighting will utilize warm white 3,000K Correlated Color Temperature (CCT) LED technology to further mitigate sky glow and support circadian rhythms.

Parking and Roadways

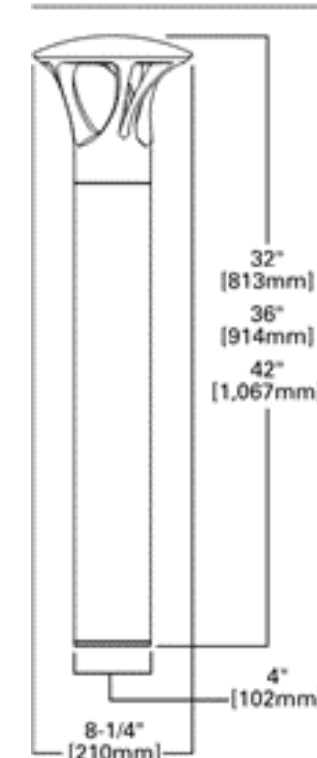
Full cut-off pole mounted LED luminaires with dark bronze finish will be utilized. Lighting will utilize photometric distributions to minimize quantity while maximizing illumination uniformity at grade. An average maintained illumination value of 11 lux will be provided with a max:min target ratio of 12:1.

Bottom of pole mounted luminaires will be 6 meters above finished grade. Height of fixtures will help keep light source out of normal viewing angles and improve uniformity.

Poles will utilize raised concrete bases for car, snow removal, and lawn maintenance protection. Luminaires will be controlled dusk-to-dawn by photocell with the ability to dim by time clock between midnight and 5am. Dimming protocols will be coordinated and approved by site security, but will never dim greater than 50%.



DIMENSIONS



Full cut-off bollard lights will be utilized that match the styling of pole mounted fixtures.



Full cut-off pole mounted lights will be utilized with a comfort optic diffuse lens to mitigate glare for pedestrians and motorists.



The Hospital as viewed during the evening from the northwest including the existing mature trees of the escarpment in the foreground, Main Plaza and Pavilion at the center and the Main Concourse and Entrance flanked by Towers A and B beyond.



Main Entry

Lighting will be utilized to assist intuitive way-finding by providing accent lighting along the architectural colonnade at the main entry. Recessed down lights in the canopy and architectural soffit will graze the vertical surfaces of the wood columns. Post-top, pedestrian scaled, full cut-off 4m tall luminaires will be utilized along sidewalks and at all crosswalks. Bollards and bench seating with integrated lights will provide a contemplative ambiance to areas of respite.

The drop-off sidewalk area will be illuminated to an average maintained value of 53 lux with a max:min target ratio of 10:1. Lighting will be controlled dusk-to-dawn by photocell.

Sidewalks

Full cut-off pole post top mounted LED luminaires with dark bronze finish will be utilized. Lighting will utilize type II or type III photometric distributions to minimize quantity while maximizing illumination uniformity at grade. An average maintained illumination value of 11 lux will be provided with a max:min target ratio of 12:1.

The luminaires will utilize a flat diffuse lensed bottom to obscure direct view of LED sources. The top of fixture will be 4 meters above finished grade. Height of fixtures will help keep light source out of normal viewing angles and improve uniformity while providing a pedestrian-scaled intimacy to walking paths. Poles utilize raised concrete bases for snow removal, and lawn maintenance protection.

