

### Master Tree Canopy Cover Plan

This Master Tree Canopy Cover Plan is comprised of 10 phases and both conceptual and detailed tree canopy cover information. This sheet explains the differences between the two approaches. While Phases 3 and 4 Hospital and CUP Projects utilize the detailed approach, all other phases are conceptual in nature.

### Conceptual Tree Canopy Cover Plans

In order to develop these conceptual tree canopy cover plans, the team has utilized the City of Oakville precedent as recommended for conceptual study by the City of Ottawa and the NCC, which stipulates mature tree canopy diameters of 3m, 10m and 14m for small, medium and large trees respectively. For purposes of calculation, and to be consistent with detailed tree canopy cover plans, the trees on conceptual plans have been drawn at 2/3 maturity, rendering tree canopy diameters of 2m for small trees, 6.67m for medium trees, and 9.34m for large tree diameters.

### Detailed Tree Canopy Cover Plans

In order to develop Detailed Tree Canopy Cover Plans for the Phase 3 and 4 Hospital and CUP Projects, the team utilized the two sources cited below to establish mature tree canopy diameters as requested by the City of Ottawa and the NCC. These mature tree diameters are shown in the Plant Schedule for this submission.

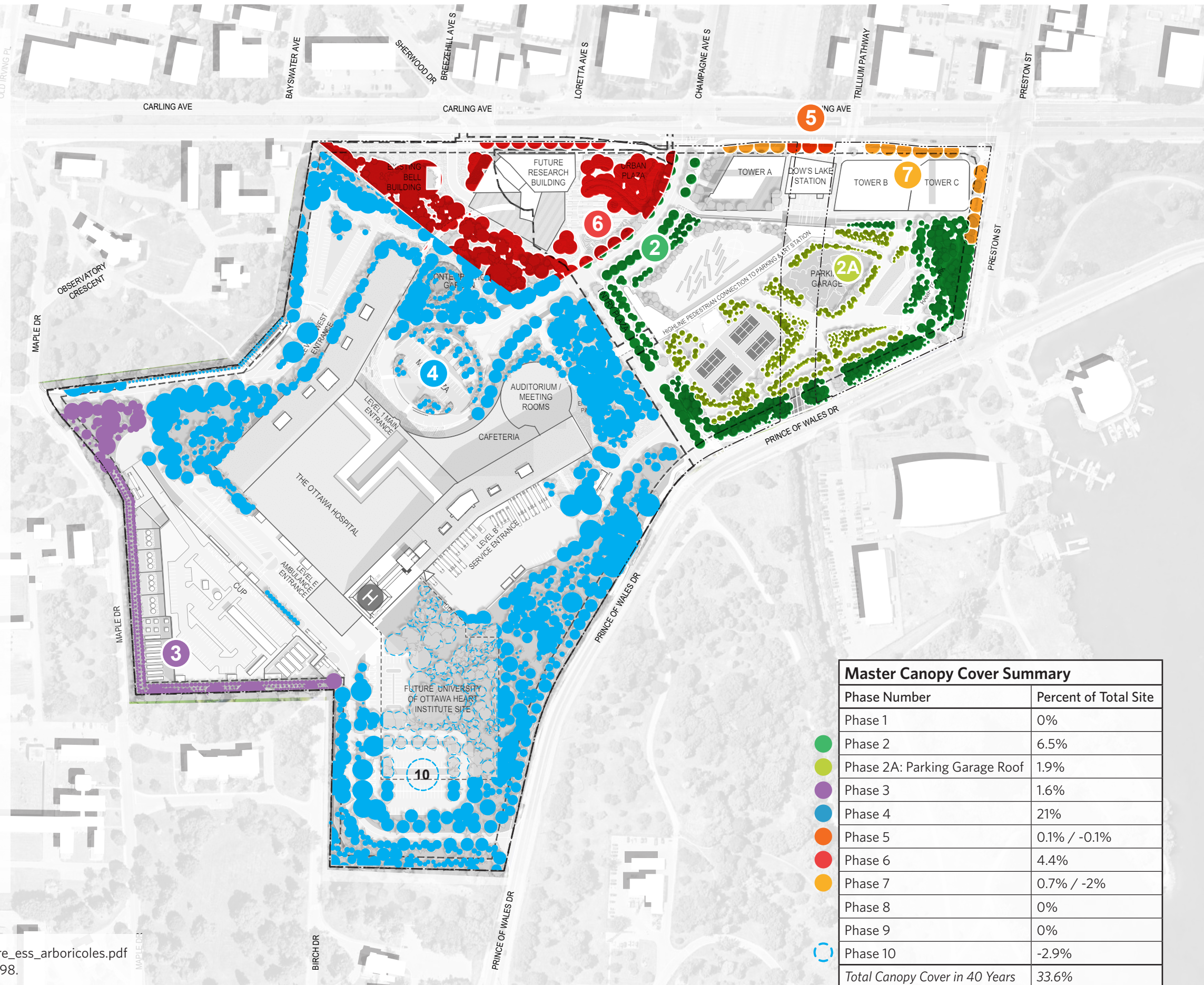
Proposed tree species are identified in the landscape planting plans, and on this tree canopy cover plan, at 2/3 of the mature sizes published in the two sources cited at the lower left of this page.

**Note: Conceptual calculations are not approved for non-conceptual designs.**

To apply the method described above, our workflow consisted of the following:

1. Placed proposed trees on the ground plane giving each tree circle a diameter that equates to 2/3 maturity for each category: small, medium and large. We used the existing tree canopy for existing trees to remain, without applying a future growth factor.
2. To find the area of the tree canopy, we drew a polyline around the perimeter of each tree, or groupings of trees with overlapping canopies so we don't count the overlap.
3. To find the tree canopy coverage we added the following three areas: individual proposed tree canopies, tree groupings with overlapping canopies, and existing tree canopies to remain. We divided this sum first by the site area for each phase, and then by the Master Site Plan Area, defined by the TOH lease boundaries, excluding the LRT rights-of-way, to get a tree canopy cover for both.

Source: [https://www.ville.quebec.qc.ca/publications/docs\\_ville/repertoire\\_ess\\_arboricoles.pdf](https://www.ville.quebec.qc.ca/publications/docs_ville/repertoire_ess_arboricoles.pdf)  
 Source: Dirr, Mahael A., Manual of Woody Landscape Plants. Revised, 1998.



| Master Canopy Cover Summary           |                       |
|---------------------------------------|-----------------------|
| Phase Number                          | Percent of Total Site |
| Phase 1                               | 0%                    |
| Phase 2                               | 6.5%                  |
| Phase 2A: Parking Garage Roof         | 1.9%                  |
| Phase 3                               | 1.6%                  |
| Phase 4                               | 21%                   |
| Phase 5                               | 0.1% / -0.1%          |
| Phase 6                               | 4.4%                  |
| Phase 7                               | 0.7% / -2%            |
| Phase 8                               | 0%                    |
| Phase 9                               | 0%                    |
| Phase 10                              | -2.9%                 |
| <b>Total Canopy Cover in 40 Years</b> | <b>33.6%</b>          |

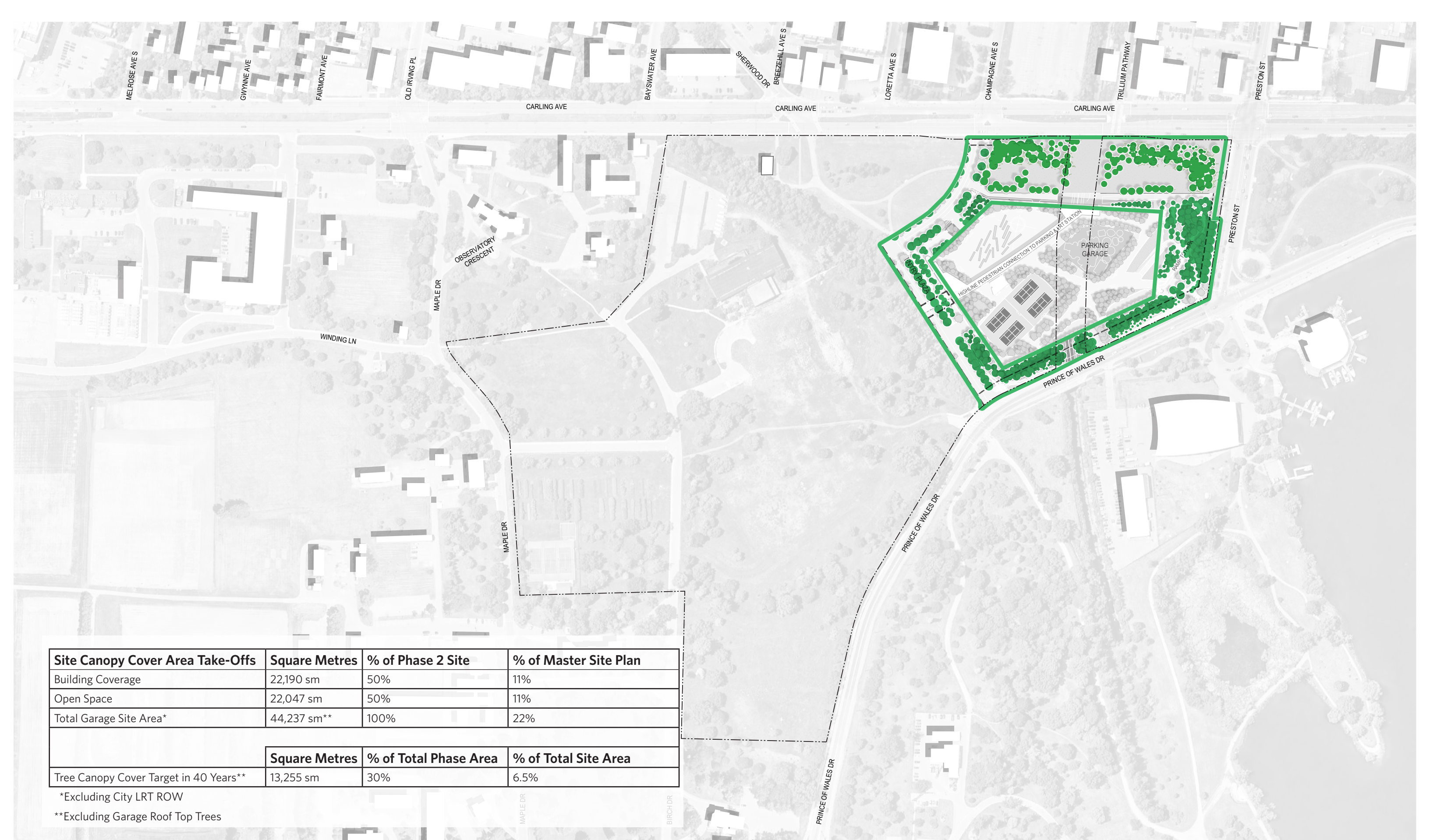
| Canopy Cover Area Take-Offs          | Square Metres | Percent of Total Site      |
|--------------------------------------|---------------|----------------------------|
| Building Coverage                    | 81,205 sm     | 40%                        |
| Open Space                           | 121,807 sm    | 60%                        |
| Total Hospital Site Area*            | 203,012 sm**  | 100%                       |
|                                      | Square Metres | Percent of Total Site Area |
| Tree Canopy Cover Target in 40 Years | 68,286 sm     | 33.6%                      |

\* Excluding City LRT ROW

\*\* Source: Annis, O-Sullivan, Vollebakk Ltd., October 1, 2020

**NEW CIVIC DEVELOPMENT FOR THE OTTAWA HOSPITAL**  
**INTERIM TREE CANOPY COVER PLAN SHOWING 1 TREE PER 5 SURFACE PARKING SPACES**  
 APRIL 14, 2023

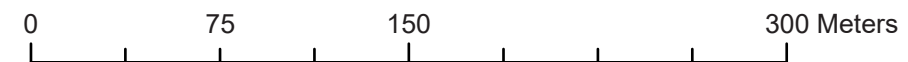


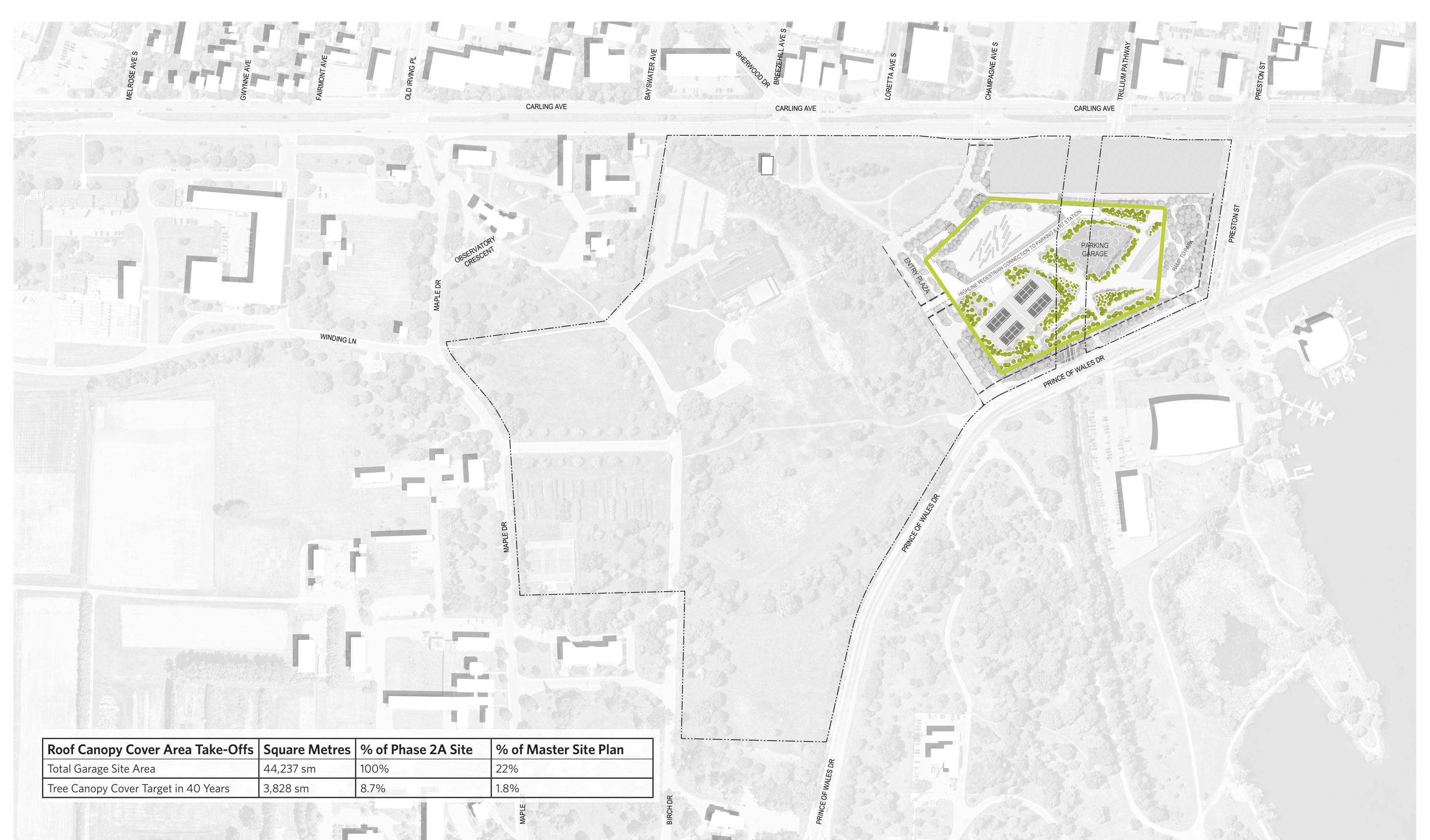


| Site Canopy Cover Area Take-Offs       | Square Metres        | % of Phase 2 Site            | % of Master Site Plan       |
|--|----------------------|------------------------------|-----------------------------|
| Building Coverage                      | 22,190 sm            | 50%                          | 11%                         |
| Open Space                             | 22,047 sm            | 50%                          | 11%                         |
| Total Garage Site Area*                | 44,237 sm**          | 100%                         | 22%                         |
|  | <b>Square Metres</b> | <b>% of Total Phase Area</b> | <b>% of Total Site Area</b> |
| Tree Canopy Cover Target in 40 Years** | 13,255 sm            | 30%                          | 6.5%                        |

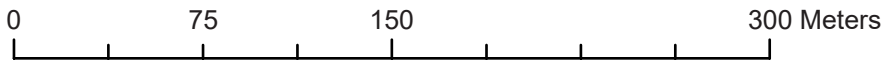
\*Excluding City LRT ROW

\*\*Excluding Garage Roof Top Trees





| Roof Canopy Cover Area Take-Offs     | Square Metres | % of Phase 2A Site | % of Master Site Plan |
|--------------------------------------|---------------|--------------------|-----------------------|
| Total Garage Site Area               | 44,237 sm     | 100%               | 22%                   |
| Tree Canopy Cover Target in 40 Years | 3,828 sm      | 8.7%               | 1.8%                  |



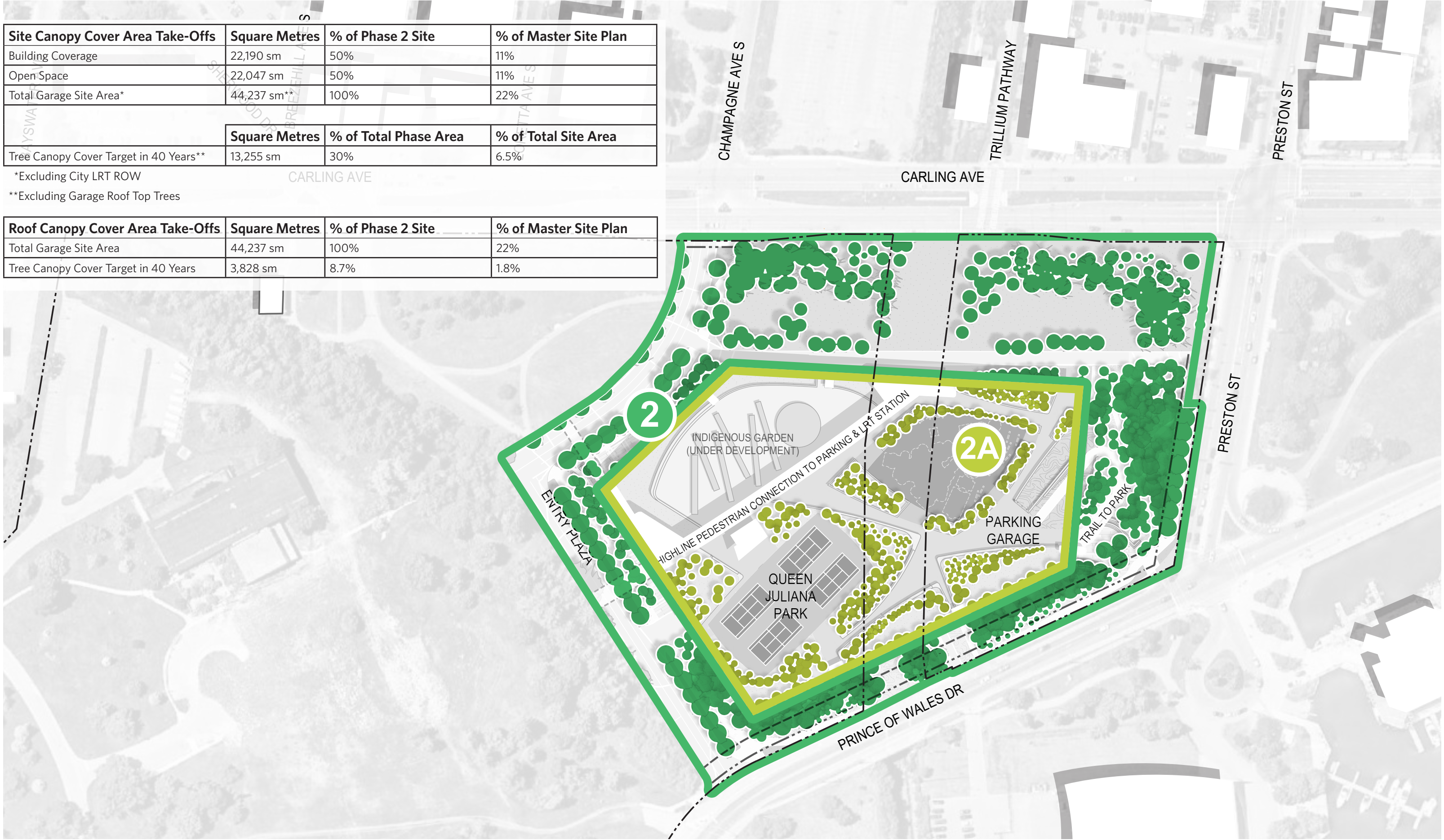
| Site Canopy Cover Area Take-Offs | Square Metres | % of Phase 2 Site | % of Master Site Plan |
|----------------------------------|---------------|-------------------|-----------------------|
| Building Coverage                | 22,190 sm     | 50%               | 11%                   |
| Open Space                       | 22,047 sm     | 50%               | 11%                   |
| Total Garage Site Area*          | 44,237 sm**   | 100%              | 22%                   |

|  | Square Metres | % of Total Phase Area | % of Total Site Area |
|--|---------------|-----------------------|----------------------|
| Tree Canopy Cover Target in 40 Years** | 13,255 sm     | 30%                   | 6.5%                 |

\*Excluding City LRT ROW

\*\*Excluding Garage Roof Top Trees

| Roof Canopy Cover Area Take-Offs     | Square Metres | % of Phase 2 Site | % of Master Site Plan |
|--------------------------------------|---------------|-------------------|-----------------------|
| Total Garage Site Area               | 44,237 sm     | 100%              | 22%                   |
| Tree Canopy Cover Target in 40 Years | 3,828 sm      | 8.7%              | 1.8%                  |

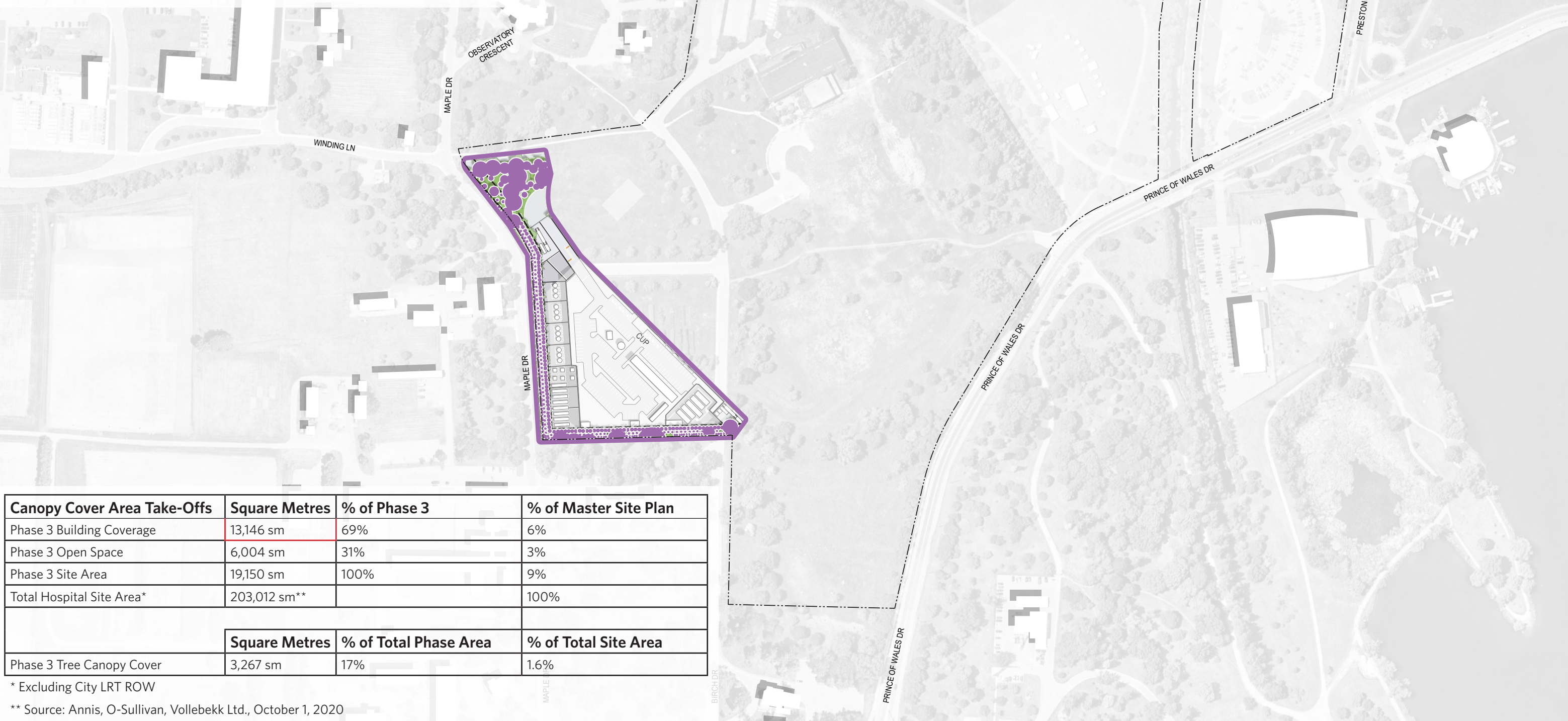


### Detailed Tree Canopy Cover Plan

In order to develop this Detailed Tree Canopy Cover Plan for the Phase 3 and 4 Hospital and CUP Projects, the team has utilized the two sources cited below to establish mature tree canopy diameters as requested by the City of Ottawa and the NCC. These mature diameters are shown in the Plant Schedule for this submission.

Proposed tree species are identified in the landscape planting plans and on this tree canopy cover plan, drawn at 2/3 of the mature sizes published in the following sources:

Source: [https://www.ville.quebec.qc.ca/publications/docs\\_ville/repertoire\\_ess\\_arboricoles.pdf](https://www.ville.quebec.qc.ca/publications/docs_ville/repertoire_ess_arboricoles.pdf)  
 Source: Dirr, Mahael A., Manual of Woody Landscape Plants. Revised, 1998.



| Canopy Cover Area Take-Offs | Square Metres        | % of Phase 3                 | % of Master Site Plan       |
|-----------------------------|----------------------|------------------------------|-----------------------------|
| Phase 3 Building Coverage   | 13,146 sm            | 69%                          | 6%                          |
| Phase 3 Open Space          | 6,004 sm             | 31%                          | 3%                          |
| Phase 3 Site Area           | 19,150 sm            | 100%                         | 9%                          |
| Total Hospital Site Area*   | 203,012 sm**         |                              | 100%                        |
|                             | <b>Square Metres</b> | <b>% of Total Phase Area</b> | <b>% of Total Site Area</b> |
| Phase 3 Tree Canopy Cover   | 3,267 sm             | 17%                          | 1.6%                        |

\* Excluding City LRT ROW

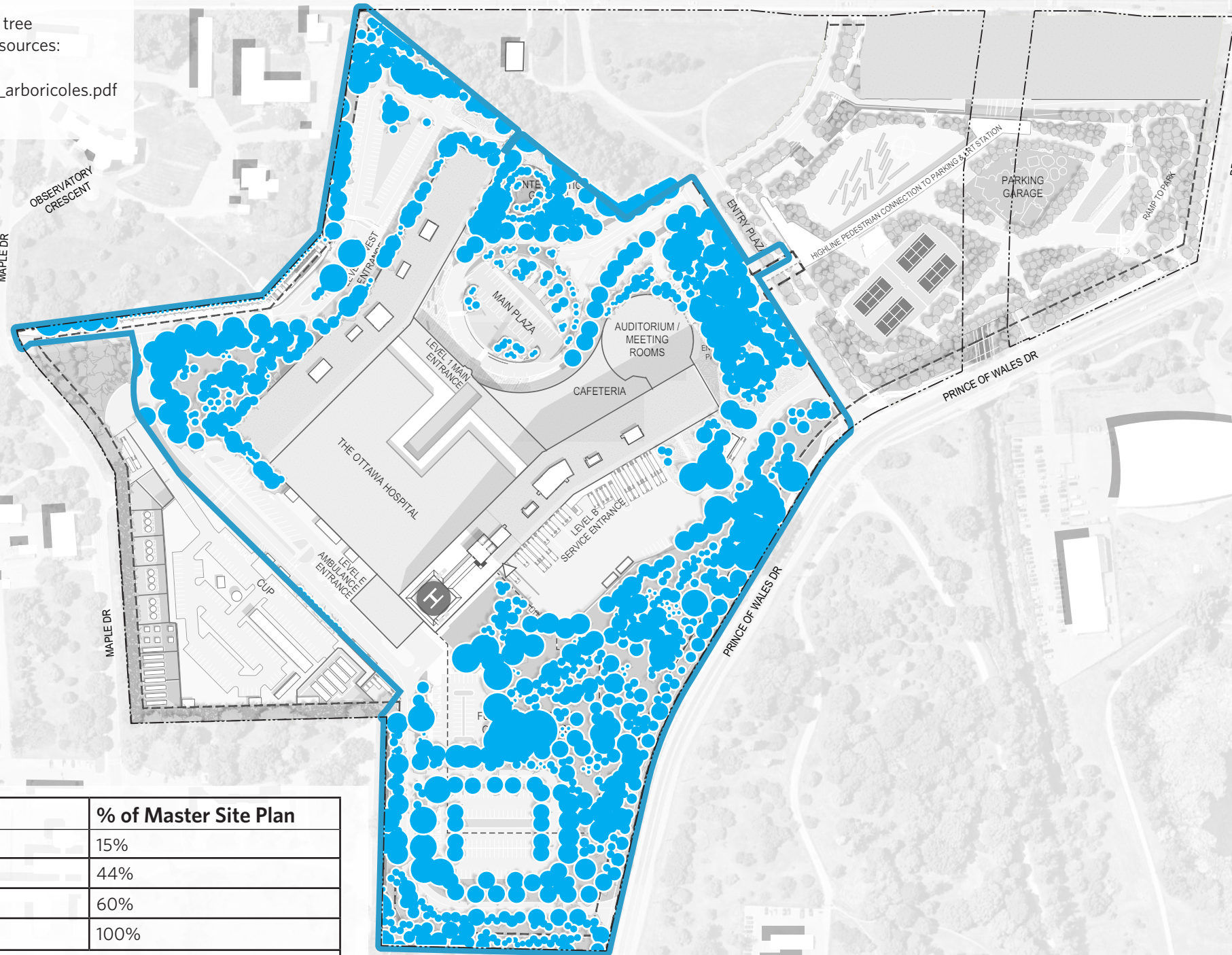
\*\* Source: Annis, O-Sullivan, Vollebakk Ltd., October 1, 2020

### Detailed Tree Canopy Cover Plan

In order to develop this Detailed Tree Canopy Cover Plan for the Phase 3 and 4 Hospital and CUP Projects, the team has utilized the two sources cited below to establish mature tree canopy diameters as requested by the City of Ottawa and the NCC. These mature diameters are shown in the Plant Schedule for this submission.

Proposed tree species are identified in the landscape planting plans and on this tree canopy cover plan, drawn at 2/3 of the mature sizes published in the following sources:

Source: [https://www.ville.quebec.qc.ca/publications/docs\\_ville/repertoire\\_ess\\_arboricoles.pdf](https://www.ville.quebec.qc.ca/publications/docs_ville/repertoire_ess_arboricoles.pdf)  
 Source: Dirr, Mahael A., Manual of Woody Landscape Plants. Revised, 1998.

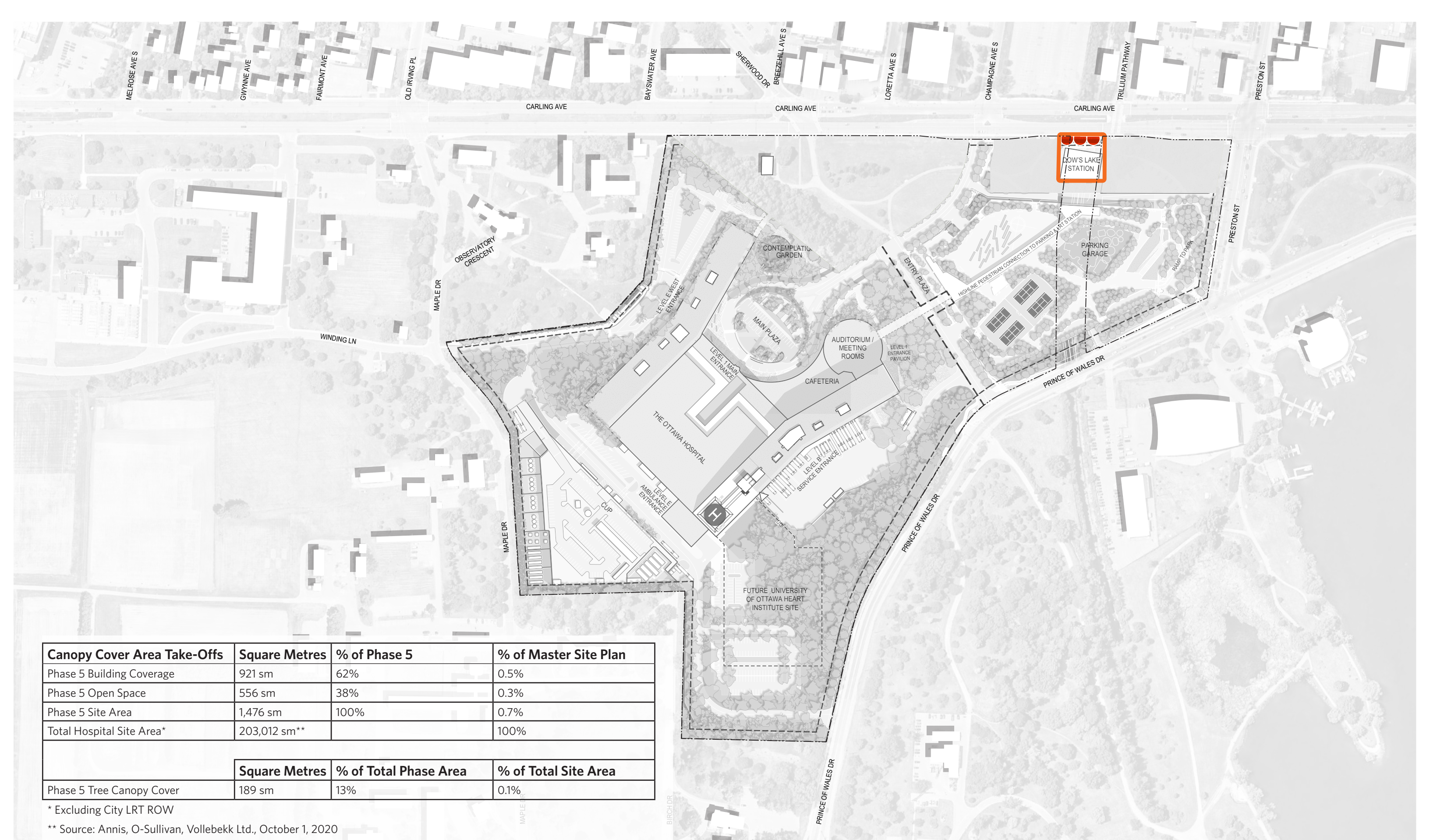


| Canopy Cover Area Take-Offs | Square Metres | % of Phase 4          | % of Master Site Plan |
|-----------------------------|---------------|-----------------------|-----------------------|
| Phase 4 Building Coverage   | 30,959 sm     | 26%                   | 15%                   |
| Phase 4 Open Space          | 90,147 sm     | 74%                   | 44%                   |
| Phase 4 Site Area           | 121,106 sm    | 100%                  | 60%                   |
| Total Hospital Site Area*   | 203,012 sm**  |                       | 100%                  |
|                             | Square Metres | % of Total Phase Area | % of Total Site Area  |
| Phase 4 Tree Canopy Cover   | 43,139 sm     | 35%                   | 21%                   |

\* Excluding City LRT ROW

\*\* Source: Annis, O-Sullivan, Vollebakk Ltd., October 1, 2020



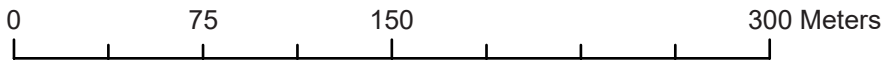


| Canopy Cover Area Take-Offs | Square Metres        | % of Phase 5                 | % of Master Site Plan       |
|-----------------------------|----------------------|------------------------------|-----------------------------|
| Phase 5 Building Coverage   | 921 sm               | 62%                          | 0.5%                        |
| Phase 5 Open Space          | 556 sm               | 38%                          | 0.3%                        |
| Phase 5 Site Area           | 1,476 sm             | 100%                         | 0.7%                        |
| Total Hospital Site Area*   | 203,012 sm**         |                              | 100%                        |
|                             | <b>Square Metres</b> | <b>% of Total Phase Area</b> | <b>% of Total Site Area</b> |
| Phase 5 Tree Canopy Cover   | 189 sm               | 13%                          | 0.1%                        |

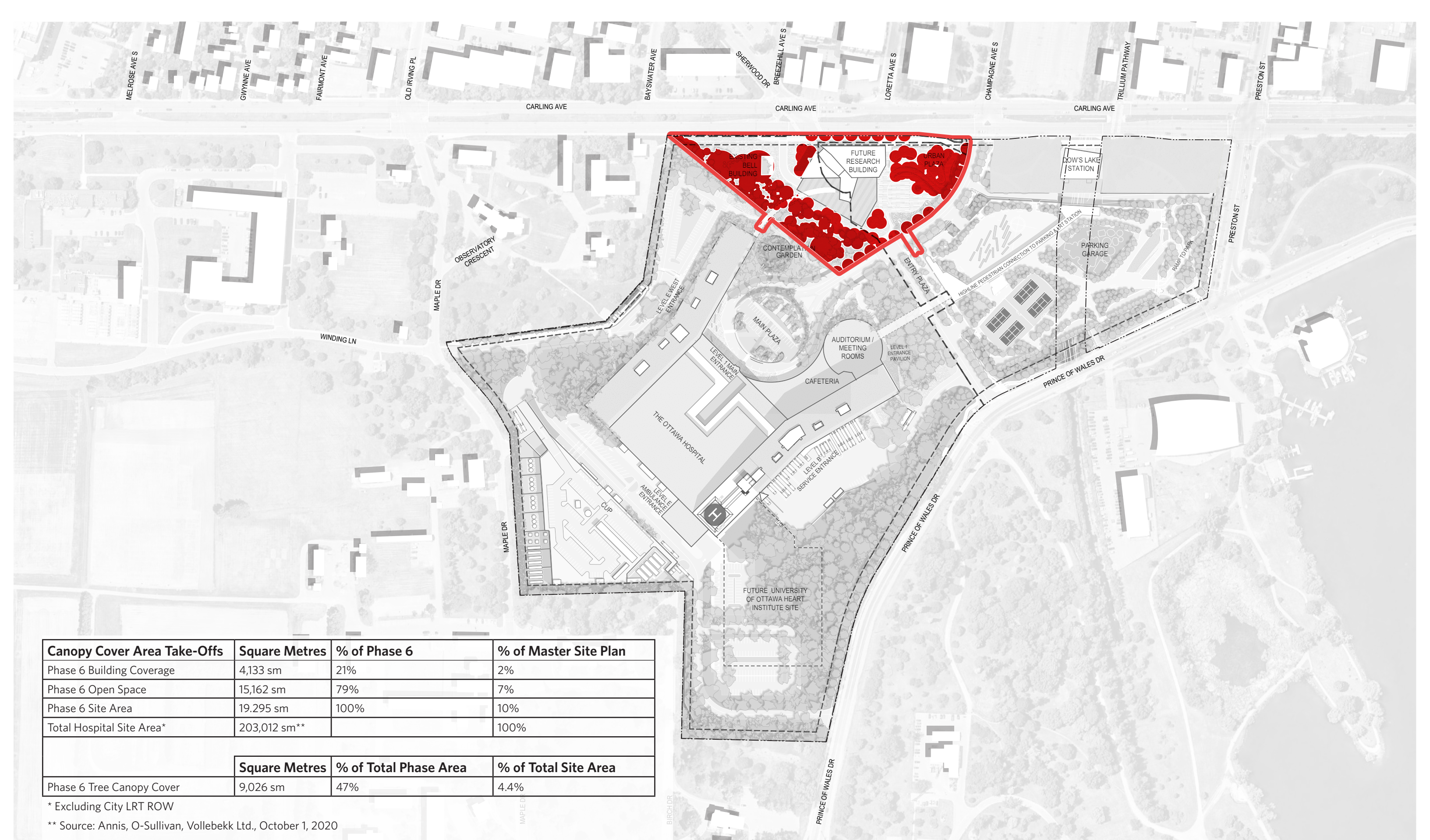
\* Excluding City LRT ROW

\*\* Source: Annis, O-Sullivan, Vollebakk Ltd., October 1, 2020

**NEW CIVIC DEVELOPMENT FOR THE OTTAWA HOSPITAL**  
**CONCEPTUAL TREE CANOPY COVER PLAN: PHASE 5 DOW'S LAKE STATION**  
 APRIL 14, 2023



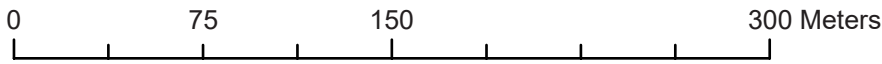


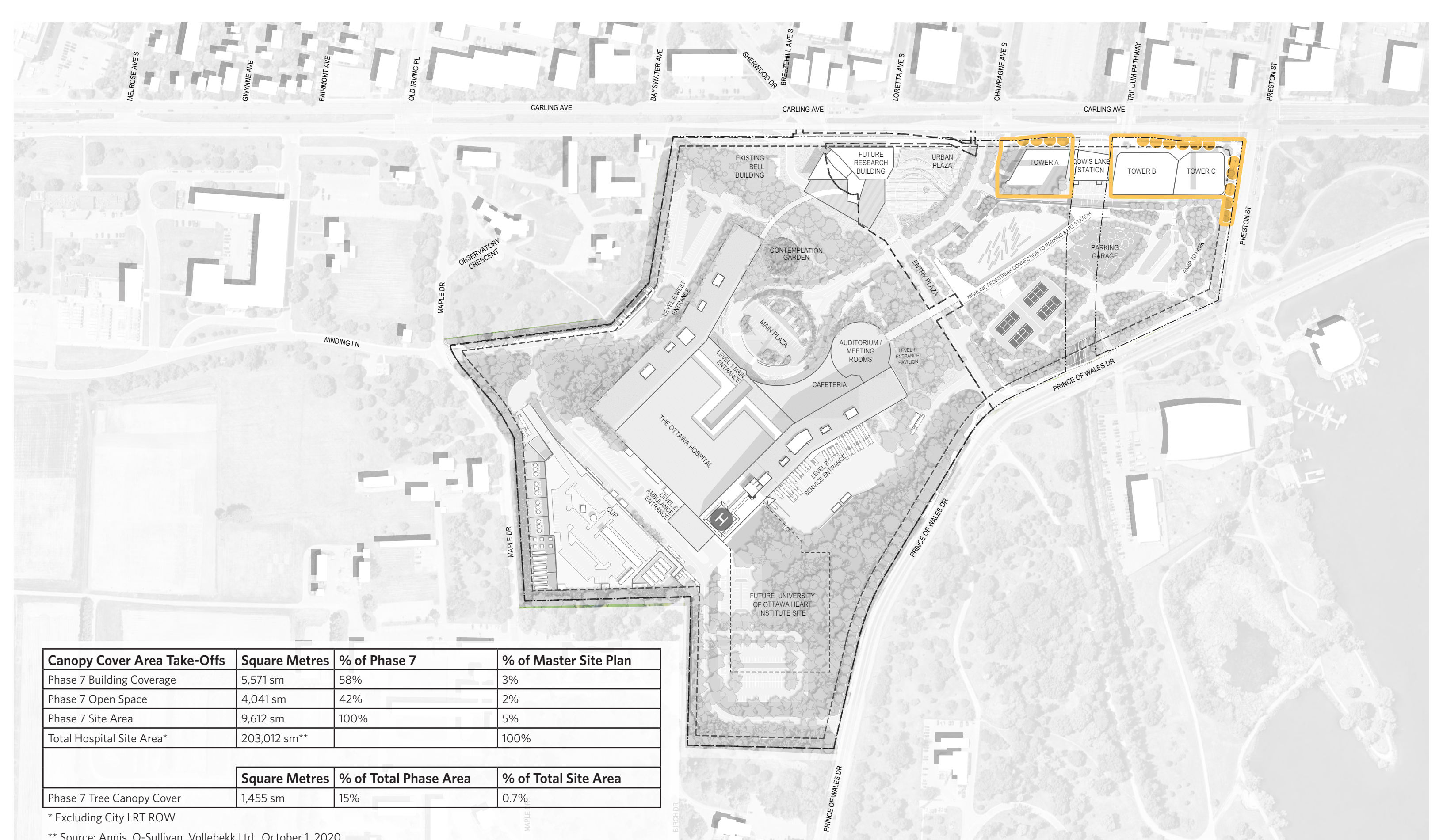


| Canopy Cover Area Take-Offs | Square Metres        | % of Phase 6                 | % of Master Site Plan       |
|-----------------------------|----------------------|------------------------------|-----------------------------|
| Phase 6 Building Coverage   | 4,133 sm             | 21%                          | 2%                          |
| Phase 6 Open Space          | 15,162 sm            | 79%                          | 7%                          |
| Phase 6 Site Area           | 19,295 sm            | 100%                         | 10%                         |
| Total Hospital Site Area*   | 203,012 sm**         |                              | 100%                        |
|                             | <b>Square Metres</b> | <b>% of Total Phase Area</b> | <b>% of Total Site Area</b> |
| Phase 6 Tree Canopy Cover   | 9,026 sm             | 47%                          | 4.4%                        |

\* Excluding City LRT ROW

\*\* Source: Annis, O-Sullivan, Vollebakk Ltd., October 1, 2020



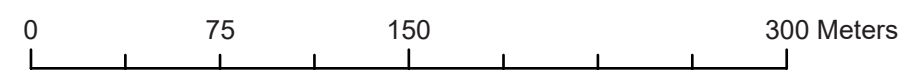


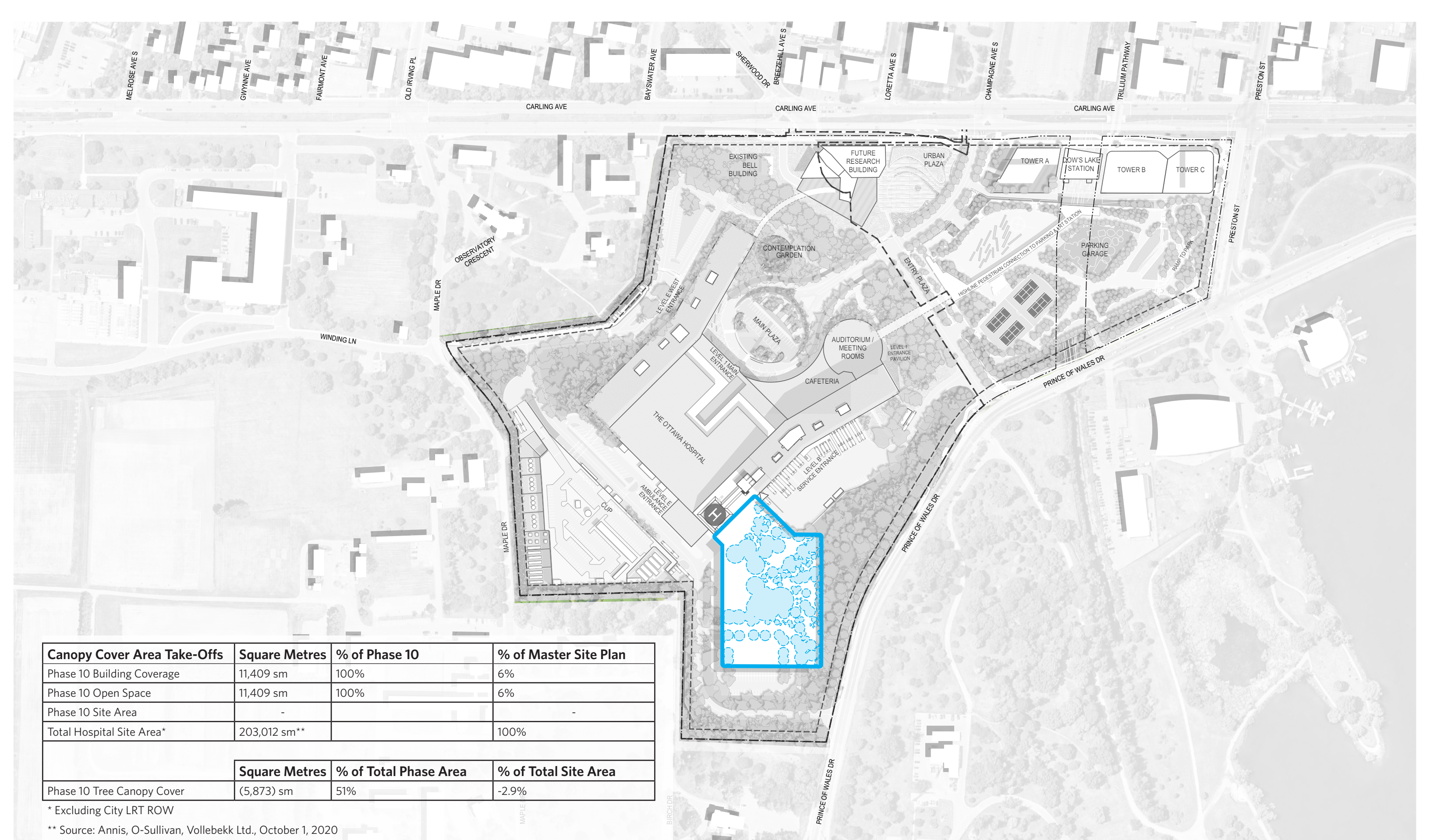
| Canopy Cover Area Take-Offs | Square Metres | % of Phase 7          | % of Master Site Plan |
|-----------------------------|---------------|-----------------------|-----------------------|
| Phase 7 Building Coverage   | 5,571 sm      | 58%                   | 3%                    |
| Phase 7 Open Space          | 4,041 sm      | 42%                   | 2%                    |
| Phase 7 Site Area           | 9,612 sm      | 100%                  | 5%                    |
| Total Hospital Site Area*   | 203,012 sm**  |                       | 100%                  |
|                             | Square Metres | % of Total Phase Area | % of Total Site Area  |
| Phase 7 Tree Canopy Cover   | 1,455 sm      | 15%                   | 0.7%                  |

\* Excluding City LRT ROW

\*\* Source: Annis, O-Sullivan, Vollebakk Ltd., October 1, 2020

**NEW CIVIC DEVELOPMENT FOR THE OTTAWA HOSPITAL**  
**CONCEPTUAL TREE CANOPY COVER PLAN: PHASE 7 CARLING AVENUE TOWERS**  
 APRIL 14, 2023





| Canopy Cover Area Take-Offs | Square Metres        | % of Phase 10                | % of Master Site Plan       |
|-----------------------------|----------------------|------------------------------|-----------------------------|
| Phase 10 Building Coverage  | 11,409 sm            | 100%                         | 6%                          |
| Phase 10 Open Space         | 11,409 sm            | 100%                         | 6%                          |
| Phase 10 Site Area          | -                    | -                            | -                           |
| Total Hospital Site Area*   | 203,012 sm**         | -                            | 100%                        |
|                             | <b>Square Metres</b> | <b>% of Total Phase Area</b> | <b>% of Total Site Area</b> |
| Phase 10 Tree Canopy Cover  | (5,873) sm           | 51%                          | -2.9%                       |

\* Excluding City LRT ROW

\*\* Source: Annis, O-Sullivan, Vollebakk Ltd., October 1, 2020

**NEW CIVIC DEVELOPMENT FOR THE OTTAWA HOSPITAL**  
**CONCEPTUAL TREE CANOPY COVER PLAN: PHASE 10 UOHI EXPANSION**  
 APRIL 14, 2023

