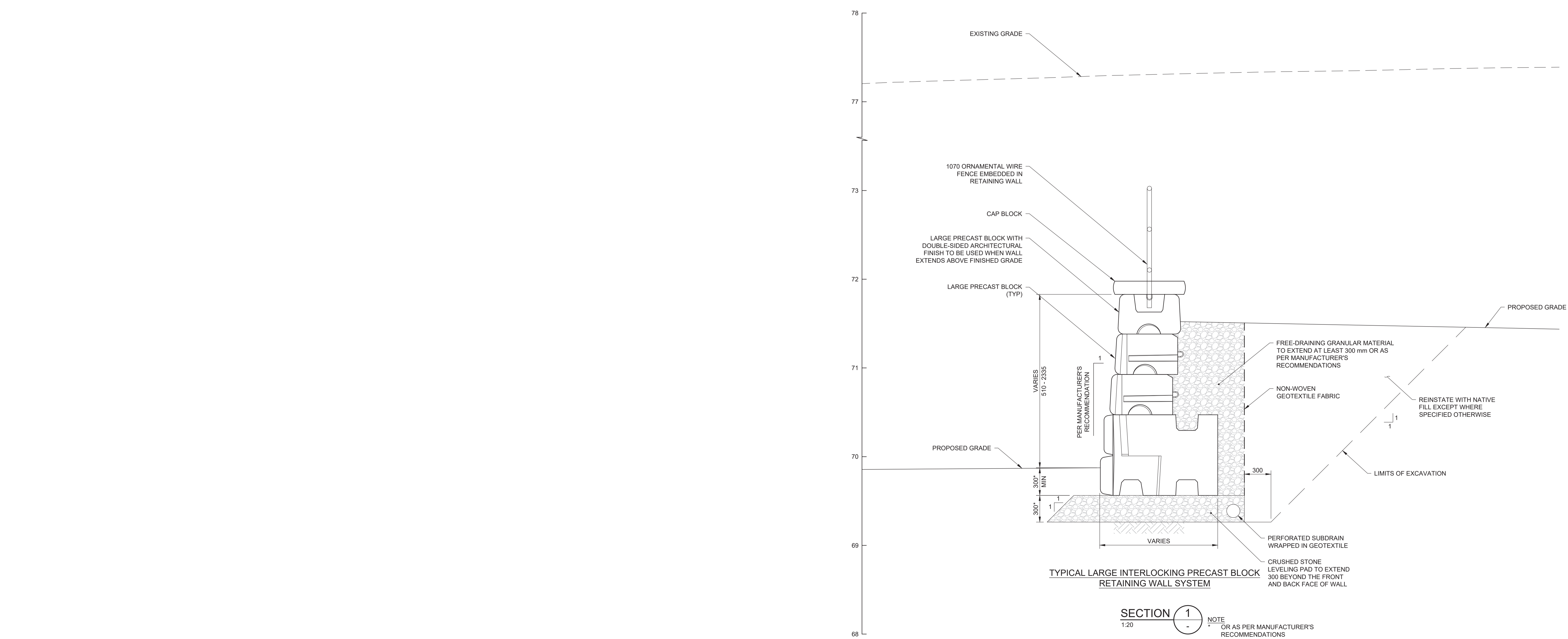
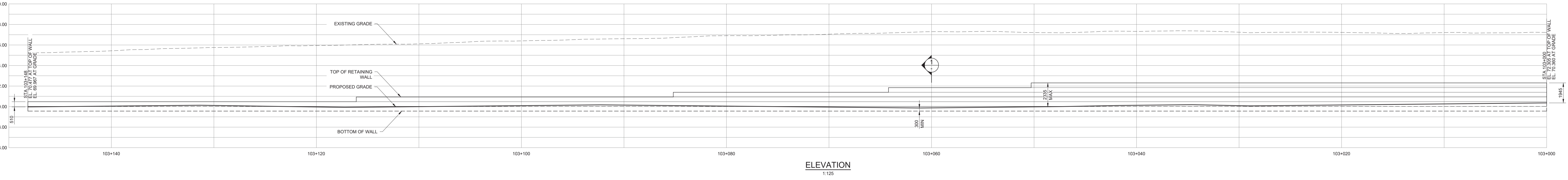
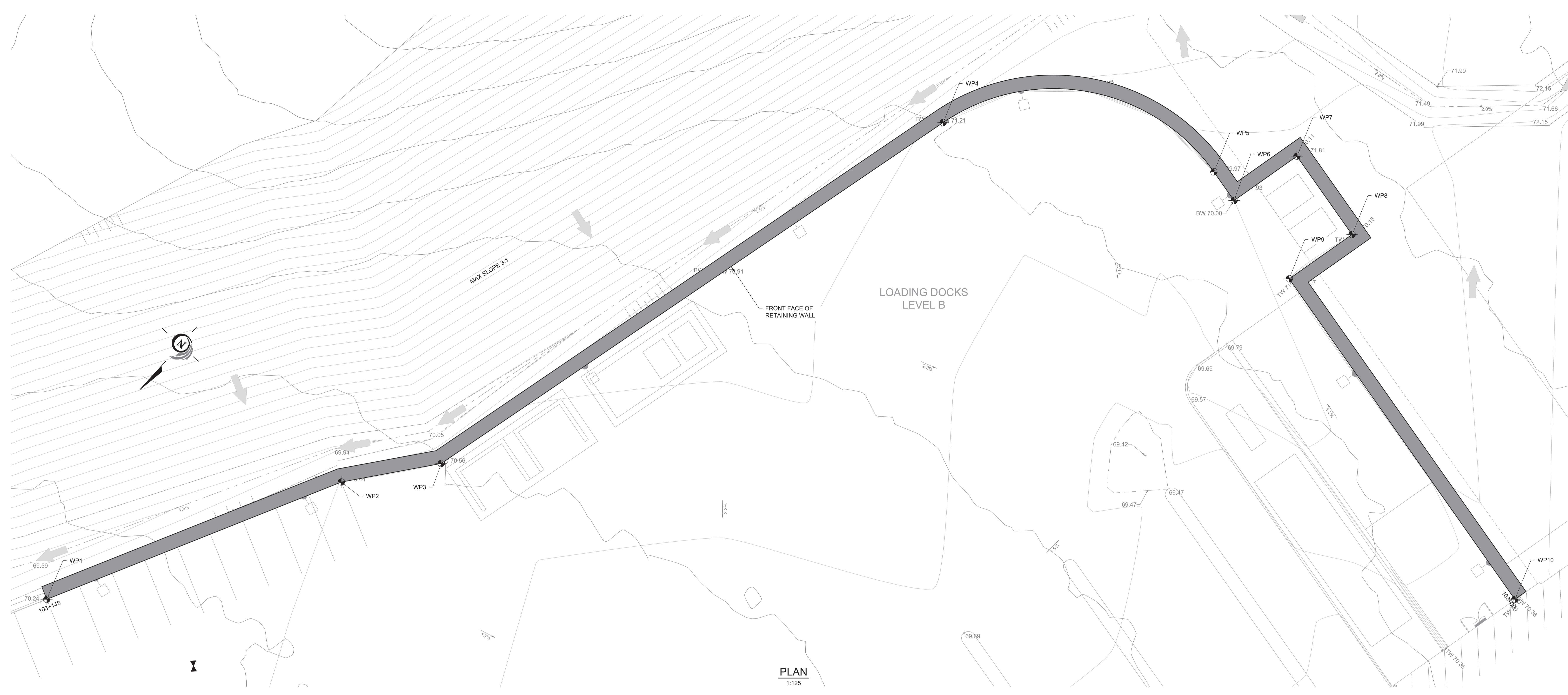


- NOTES:
- THIS DRAWING TO BE READ IN CONJUNCTION WITH THE CIVIL DRAWINGS ATTACHED IN THIS SET.
  - RETAINING WALLS ARE SHOWN SCHEMATICALLY AND SHALL BE DESIGNED BY AN ENGINEER IN ACCORDANCE WITH THE MANUFACTURER'S WRITTEN RECOMMENDATIONS.
  - RETAINING WALLS ARE DRAWN BASED ON THE MOST CURRENT SITE GRADING PLAN AND IS SUBJECT TO CHANGE.
  - FREE DRAINING GRANULAR MATERIAL, PERFORATED SUBDRAIN, AND NON-WOVEN GEOTEXTILE SHALL BE AS SPECIFIED BY A GEOTECHNICAL ENGINEER. SUBDRAIN OUTLET TO BE COORDINATED WITH MANUFACTURER.
  - ADDITIONAL WALL DRAINAGE (w/ WEEP HOLES) SHALL BE AS SPECIFIED BY THE MANUFACTURER.
  - BASIS OF DESIGN FOR THE LARGE PRECAST BLOCK GRAVITY WALL SHALL BE RED-ROCK'S KINGSTONE. TEXTURE IN A GRAY COLOUR. PRODUCT ALTERNATIVES THAT MATCH THE PERFORMANCE CRITERIA AND APPEARANCE OF THIS PRODUCT CAN BE SUBMITTED FOR REVIEW AND APPROVAL.
  - BASIS OF DESIGN FOR THE GUARDRAILS ATOP THE RETAINING WALL SHALL BE OMEGA 105 ARCHITECTURAL STYLE WELDED WIRE PANEL FENCING. PRODUCT ALTERNATIVES THAT MATCH THE PERFORMANCE CRITERIA AND APPEARANCE OF THIS PRODUCT CAN BE SUBMITTED FOR REVIEW AND APPROVAL.

COORDINATES		
WORKING POINTS	NORTHING	EASTING
WP #1	502847123.351	36722901.172
WP #2	5028453053.963	366712659.721
WP #3	5028447102.714	366708125.909
WP #4	5028403553.755	366687681.279
WP #5	5028392779.148	366680446.921
WP #6	5028393337.257	366677926.827
WP #7	5028387794.485	366676699.305
WP #8	5028383322.744	366669798.579
WP #9	5028384865.516	366671026.101
WP #10	5028401120.043	366642784.314

APPROVED  
By Lily Xu at 4:41 pm, Jun 06, 2024

*Lily Xu*  
LILY XU, MCIP, RPP  
MANAGER, DEVELOPMENT REVIEW SOUTH  
PLANNING, DEVELOPMENT AND BUILDING SERVICES  
DEPARTMENT, CITY OF OTTAWA



THESE DRAWINGS ARE FOR INFORMATION PURPOSES ONLY AND ARE NOT INTENDED TO BE USED AS A BASIS FOR CONSTRUCTION. ANY USE OF MODIFICATION OF THESE DRAWINGS IS ENTIRELY AT THE USER'S OWN RISK. PLEASE REFER TO THE CONSTRUCTION-ISSUE DRAWINGS BEARING A PROFESSIONAL ENGINEER'S STAMP FOR DEFINITIVE INFORMATION.



Architect	Author
Landscape Architect	HDR
Civil Engineer	PARSONS
Structural Engineer	ENR
Mechanical Engineer	Smith + Anderson
Plumbing Engineer	Smith + Anderson
Interior Designer	HDR
Equipment Planner	Collins
Wayfinding	Wayfinding

Sheet Reviewer: Author

MARK	DATE	DESCRIPTION
01	2022-08-23	ISSUED FOR PRE CONSULTATION
02	2022-10-26	DRAFT FOR M01 3D
03	2022-11-30	ISSUED FOR SPC 4 FLUDA - 1ST SUBMISSION
04	2022-12-02	ISSUED FOR 3A1-2
05	2023-02-24	ISSUED FOR RFP VERSION 1.0
06	2023-04-11	RE-ISSUED FOR SPC 4 FLUDA
07	2023-01-28	ISSUED FOR P505
08	2022-08-04	RE-ISSUED FOR P505
09	2022-09-28	ISSUED FOR REVIEW AND COSTING
10	2023-10-27	ISSUED FOR M04 3A.3

Project Number: 1033392  
Original Issue: 1030121

PRELIMINARY  
NOT FOR CONSTRUCTION

Sheet Name  
RETAINING WALL  
PRELIMINARY DESIGN  
STA 103+000 - 103+138  
FACILITY LOADING DOCKS

Sheet Number  
S03

Project Status  
STAGE 3

D07-12-22-0168

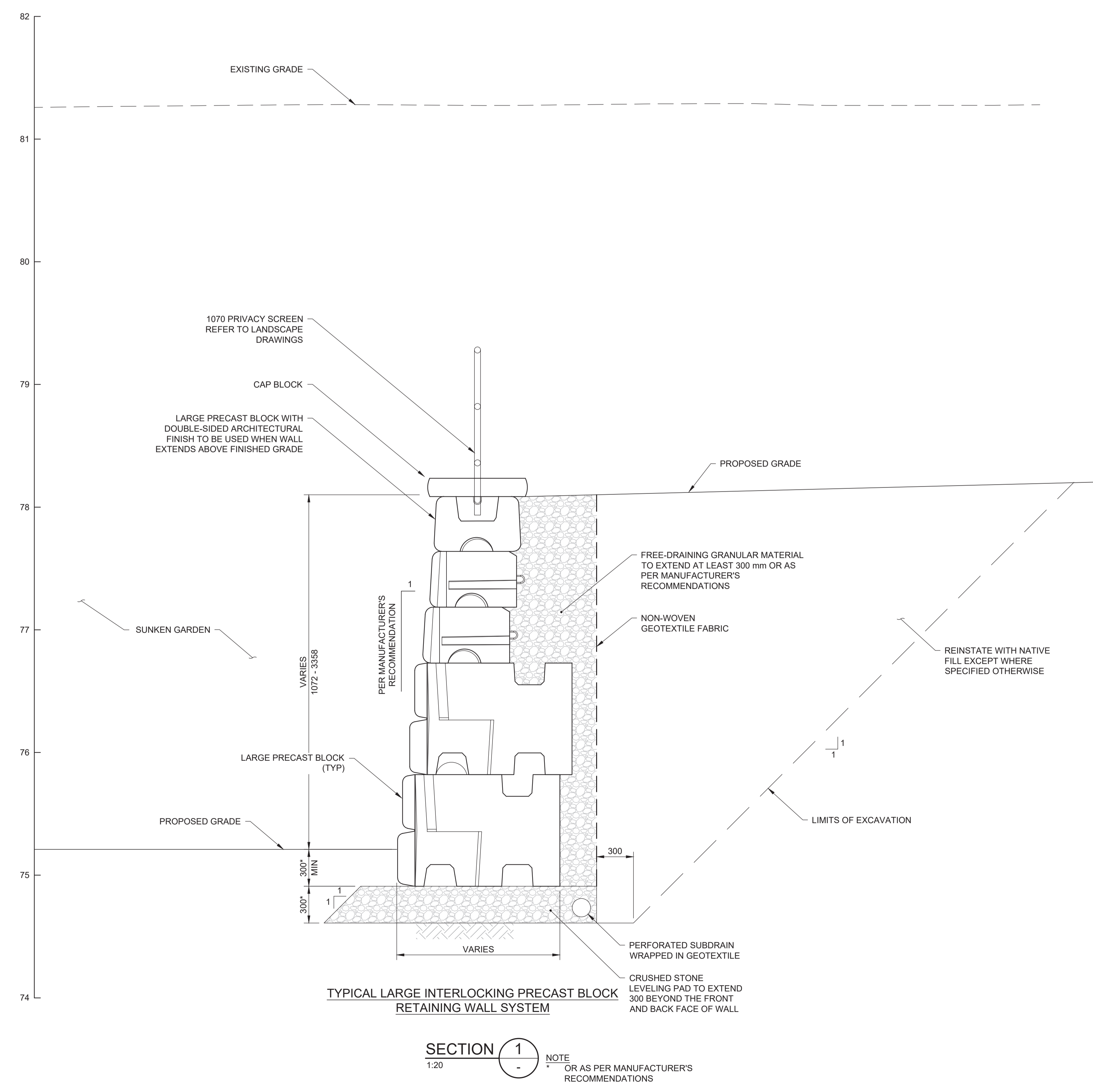
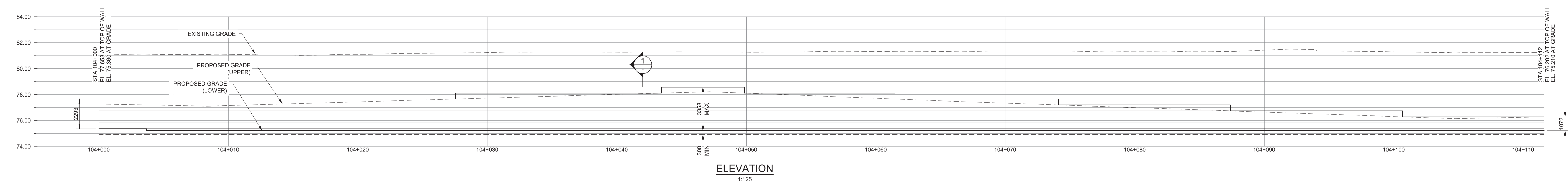


- NOTES:
1. THIS DRAWING TO BE READ IN CONJUNCTION WITH THE CIVIL DRAWINGS ATTACHED IN THIS SET.
  2. RETAINING WALLS ARE SHOWN SCHEMATICALLY AND SHALL BE DESIGNED BY AN ENGINEER IN ACCORDANCE WITH THE MANUFACTURER'S WRITTEN RECOMMENDATIONS.
  3. RETAINING WALLS ARE DRAWN BASED ON THE MOST CURRENT SITE GRADING PLAN AND IS SUBJECT TO CHANGE.
  4. FREE DRAINING GRANULAR MATERIAL, PERFORATED SUBDRAN, AND NON-WOVEN GEOTEXTILE SHALL BE AS SPECIFIED BY A GEOTECHNICAL ENGINEER. SUBDRAN OUTLET TO BE COORDINATED WITH MANUFACTURER.
  5. ADDITIONAL WALL DRAINAGE (i.e. WEEP HOLES) SHALL BE AS SPECIFIED BY THE MANUFACTURER.
  6. BASIS OF DESIGN FOR THE LARGE PRECAST BLOCK GRAVITY WALL SHALL BE RED-ROCK'S KINGSTONE TEXTURE IN A GRAY COLOUR. PRODUCT ALTERNATIVES THAT MATCH THE PERFORMANCE CRITERIA AND APPEARANCE OF THIS PRODUCT CAN BE SUBMITTED FOR REVIEW AND APPROVAL.

COORDINATES		
WORKING POINTS	NORTHING	EASTING
WP #1	5028376150	366514876
WP #2	5028369475	366513198
WP #3	5028381936	366456889
WP #4	5028419759	366465404
WP #5	5028417943	366473606

APPROVED  
By Lily Xu at 4:39 pm, Jun 06, 2024

*Lily Xu*  
LILY XU, MCIP, RPP  
MANAGER, DEVELOPMENT REVIEW SOUTH  
PLANNING, DEVELOPMENT, AND BUILDING SERVICES  
DEPARTMENT, CITY OF OTTAWA



THESE DRAWINGS ARE FOR INFORMATION PURPOSES ONLY AND ARE NOT INTENDED TO BE USED AS A BASIS FOR CONSTRUCTION. ANY USE OF MODIFICATION OF THESE DRAWINGS IS ENTIRELY AT THE USER'S OWN RISK. PLEASE REFER TO THE CONSTRUCTION-ISSUE DRAWINGS BEARING A PROFESSIONAL ENGINEER'S STAMP FOR DEFINITIVE INFORMATION.



HDR Architecture Associates Inc.  
300 Richmond Road, Suite 200  
Ottawa, Ontario K1Z 0N6



THE OTTAWA HOSPITAL  
- CIVIC CAMPUS  
REDEVELOPMENT



Architect	HDR
Landscape Architect	HDR
Civil Engineer	Parsons
Structural Engineer	ENR
Mechanical Engineer	Smith + Anderson
Plumbing Engineer	Smith + Anderson
Interior Designer	HDR
Equipment Planner	Collins
Wayfinding	

Sheet Reviewer: | Author:

MARK	DATE	DESCRIPTION
01	2022-08-23	ISSUED FOR PRE CONSULTATION
02	2022-10-26	DRAFT FOR I&D
03	2022-11-30	ISSUED FOR SPC & FLUDA - 1ST SUBMISSION
04	2022-12-02	ISSUED FOR 3A1-2
05	2023-02-24	ISSUED FOR RFP VERSION 1.0
06	2023-04-11	RE-ISSUED FOR SPC & FLUDA
07	2023-01-28	ISSUED FOR P505
08	2022-08-04	RE-ASSUED FOR P505
09	2022-05-26	ISSUED FOR REVIEW AND COSTING
10	2023-10-27	ISSUED FOR MOH 3A.3

Project Number: 1033092  
Original Issue: 02/01/23

PRELIMINARY  
NOT FOR CONSTRUCTION

Sheet Name:  
RETAINING WALL  
PRELIMINARY DESIGN  
STA 104+000 - 104+112  
SUNKEN GARDENS

Sheet Number:  
S04

Project Status:  
STAGE 3

D07-12-22-0168