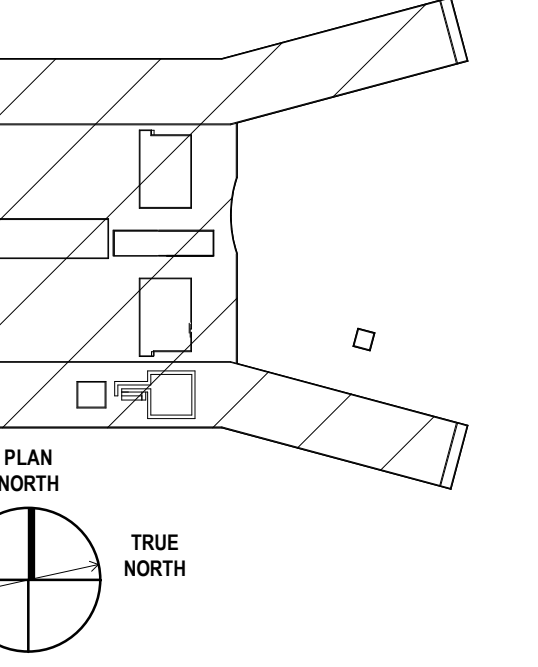


KEY PLAN



PROJECT TEAM

Project Manager
Project Designer
Project Architect
Landscape Architect
Civil Engineer
Structural Engineer
Mechanical Engineer
Plumbing Engineer
Interior Designer
Equipment Planner
Wayfinding

MARK DATE DESCRIPTION

MARK	DATE	DESCRIPTION
1	2022/09/30	ISSUED FOR PRE-CONSULTATION
2	2022/10/26	DRAFT FOR 90% SD
3	2022/11/30	ISSUED FOR EPC & FLUDA - 1ST SUBMISSION

Project Number

22105.001

Original Issue

02/10/20

Sheet Name

ELECTRICAL SITE PLAN - OVERALL

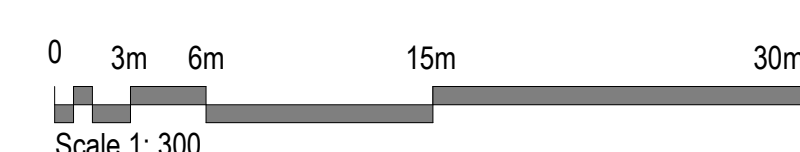
Sheet Number

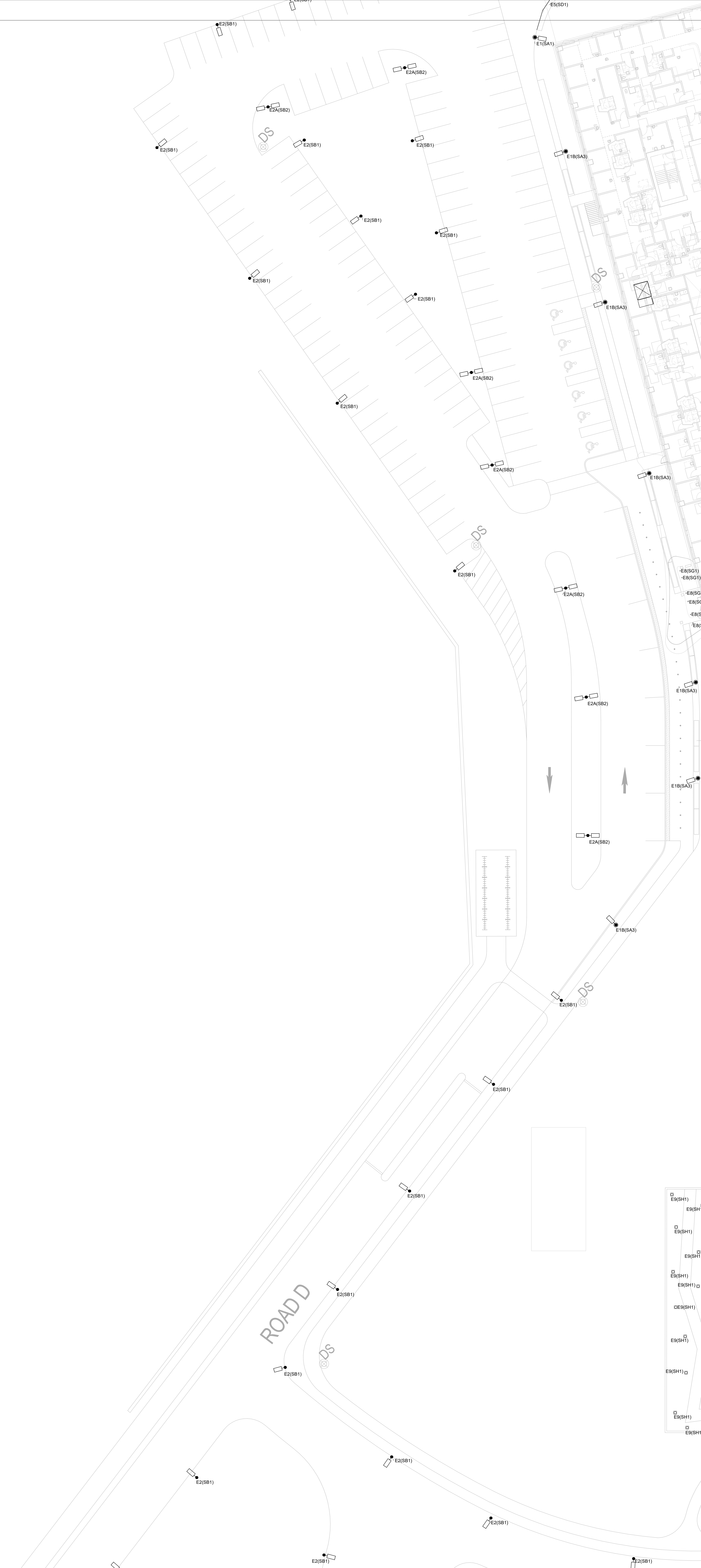
E-101

Project Status

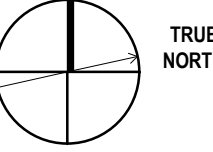
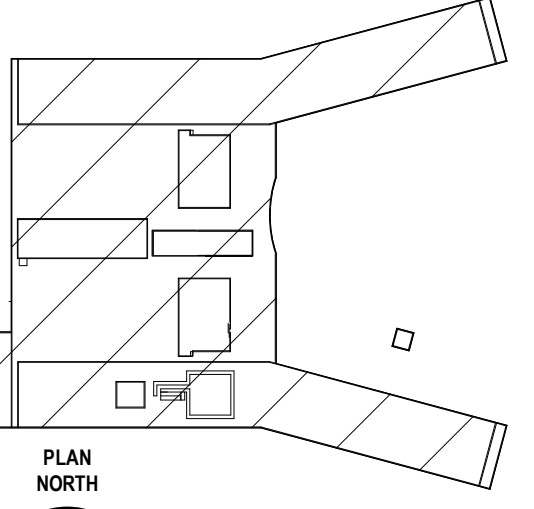
** Work in Progress / Issued for Permit / etc.

- GENERAL NOTES**
- DO NOT SCALE DRAWINGS. THE LOCATIONS OF ALL ITEMS SHOWN ON THE DRAWINGS OR SPECIFIED THAT ARE NOT DEFINITELY FIXED BY THE DIMENSIONS ARE APPROXIMATE. ONLY THE EXACT LOCATIONS NECESSARY TO SECURE THE BEST CONDITIONS AND RESULTS MUST BE DETERMINED BY THE SITE CONDITIONS. REVIEW ALL REVISIONS WITH THE CONSULTANT.
 - FLOOR PLANS SHALL BE READ IN CONJUNCTION WITH THE ARCHITECTURAL, LANDSCAPE AND STRUCTURAL DRAWINGS.
 - COORDINATE CONCRETE LIGHTING BASE WITH STRUCTURAL ENGINEER AND COORDINATE EXACT LOCATIONS ON SITE PRIOR TO CONSTRUCTION.
 - CONTRACTOR TO COORDINATE ALL ELECTRICAL IN-SLAB CONDUITS WITH STRUCTURAL ENGINEER AND ALL OTHER IN-SLAB SERVICES TO ENSURE THERE ARE NO INTERFERENCES.
 - REFER TO DIRECT BURIED DUCT BANK FOR LIGHTING AND LIGHTING STANDARD BASE DETAILS FOR POWER INSTALLATION REQUIREMENT.
- DRIVING NOTES**
- PROVIDE 2 AWAY - 6mm PVC CONDUITS FROM MAIN TO LIGHTING PANEL IN MAIN ELECTRICAL ROOMS. COORDINATE CONDUIT SIZES WITH LIGHT CIRCUITS AS REQUIRED ON SITE.
 - PROVIDE A TOTAL OF FOUR (4) PHOTOCELLS TO CONTROL ALL EXTERIOR LIGHTING FIXTURES SHOWN. PROVIDE RELAY TO RUN LIGHTING CIRCUITS. EACH PHOTOCELL TO CONTROL LIGHTS ON ONE SIDE OF THE BUILDING, THAT IS EAST, WEST, SOUTH AND NORTH.





KEY PLAN



- Project Manager
- Project Designer
- Project Architect
- Landscape Architect
- Civil Engineer
- Structural Engineer
- Mechanical Engineer
- Plumbing Engineer
- Interior Designer
- Equipment Planner
- Wayfinding

Sheet Reviewer | Author

MARK	DATE	DESCRIPTION
1	2022/09/30	ISSUED FOR PRE-CONSULTATION
2	2022/10/26	DRAFT FOR 90% SD
3	2022/11/30	ISSUED FOR EPC & FLUDA - 1ST SUBMISSION

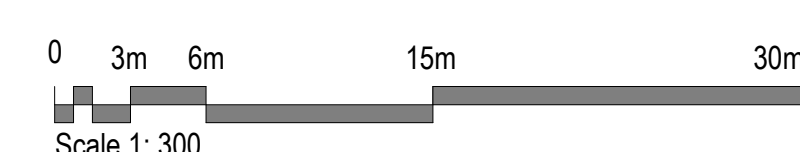
Project Number: 22150.001
Original Issue: 09/30/22

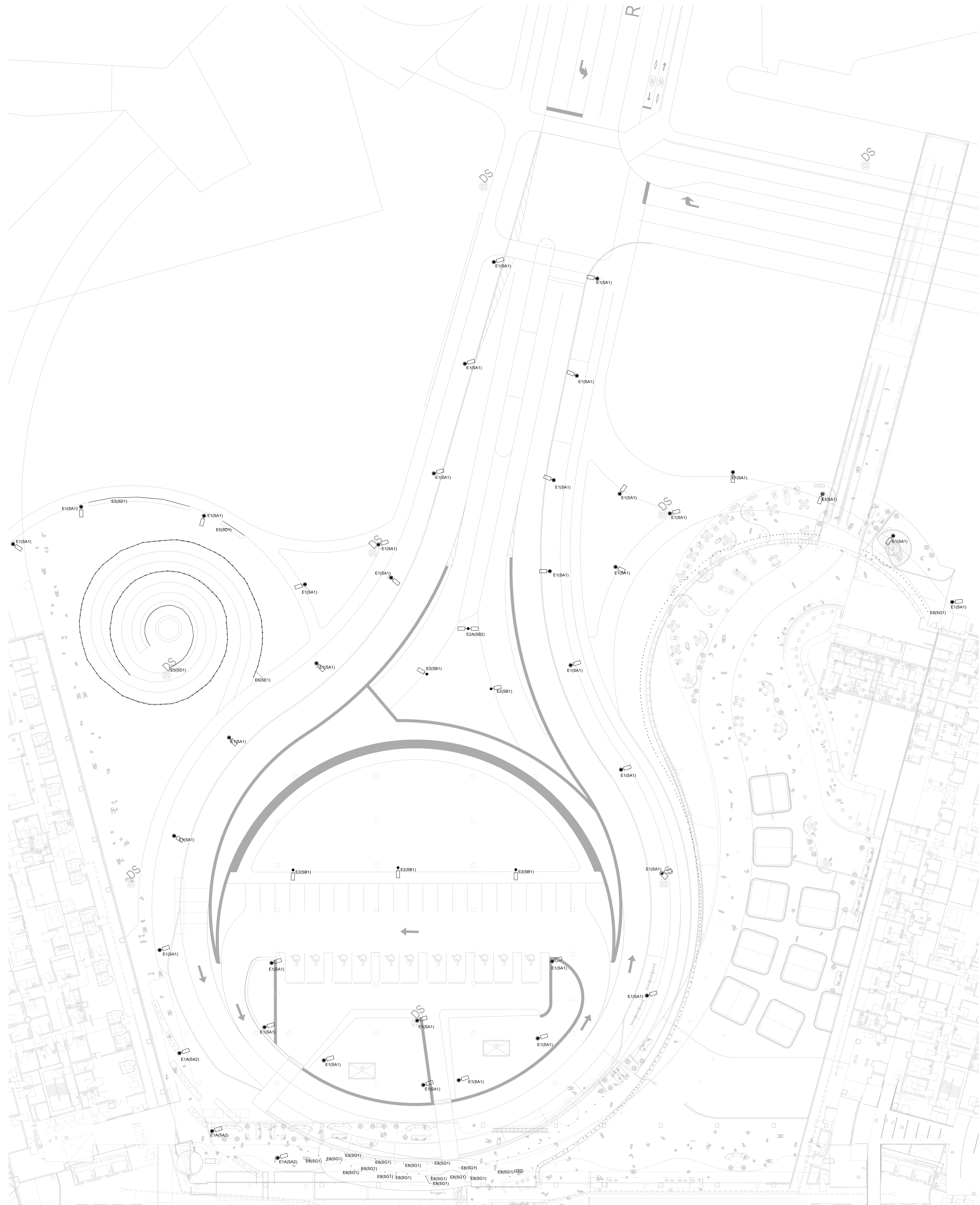
PRELIMINARY
NOT FOR CONSTRUCTION

SHEET NAME
ELECTRICAL SITE
PLAN 1 OF 5

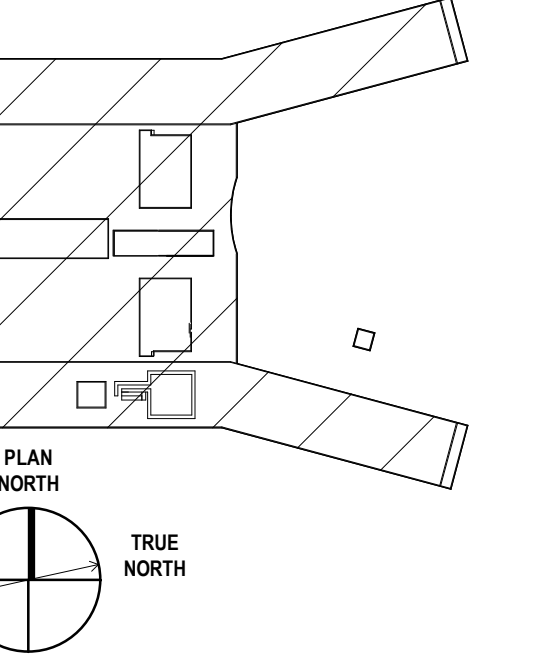
SHEET NUMBER
E-101A

Project Status
** Work in Progress / Issued for Permit / etc...





KEY PLAN



Project Manager
Project Designer
Project Architect
Landscape Architect
Civil Engineer
Structural Engineer
Mechanical Engineer
Electrical Engineer
Plumbing Engineer
Interior Designer
Equipment Planner
Wayfinding

Sheet Reviewer | Author

MARK	DATE	DESCRIPTION
1	2022/09/30	ISSUED FOR PRE-CONSULTATION
2	2022/10/26	DRAFT FOR RFP, SD
3	2022/11/30	ISSUED FOR EPC & FLIDA - 1ST SUBMISSION

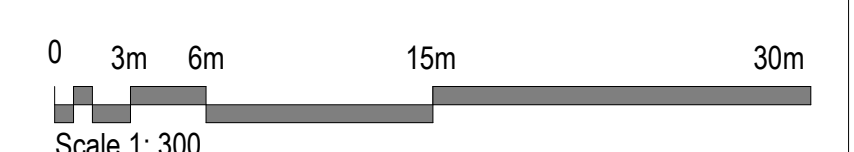
Project Number: 22150.001
Original Issue: 09/30/22

PRELIMINARY
NOT FOR CONSTRUCTION

Sheet Name
**ELECTRICAL SITE
PLAN 2 OF 5**

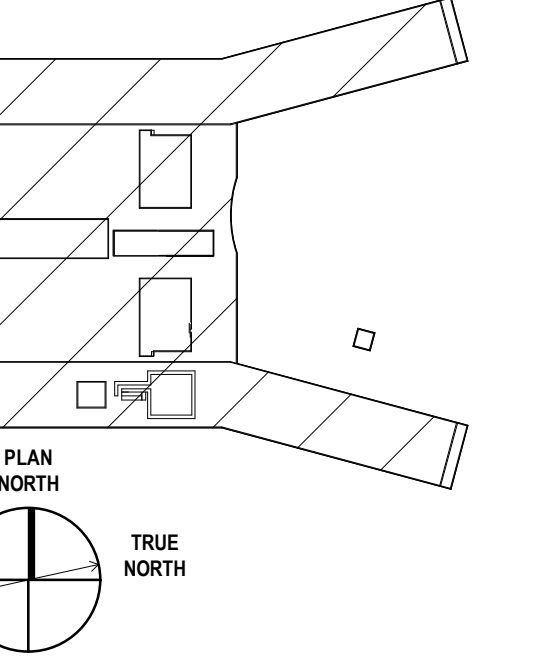
Sheet Number
E-101B

Project Status
** Work in Progress / Issued for Permit / etc...





KEY PLAN



- Project Manager
- Project Designer
- Project Architect
- Landscape Architect
- Civil Engineer
- Structural Engineer
- Mechanical Engineer
- Electrical Engineer
- Plumbing Engineer
- Interior Designer
- Equipment Planner
- Wayfinding

Sheet Reviewer: _____
Author: _____

MARK	DATE	DESCRIPTION
1	2022/09/30	ISSUED FOR PRE-CONSULTATION
2	2022/10/26	DRAFT FOR 90% SD
3	2022/11/30	ISSUED FOR EPC & FLUDA - 1ST SUBMISSION

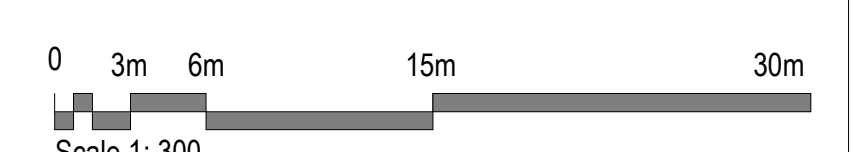
Project Number: 22150.001
Original Issue: 09/30/22

PRELIMINARY
NOT FOR CONSTRUCTION

Sheet Name
**ELECTRICAL SITE
PLAN 3 OF 5**

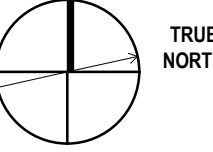
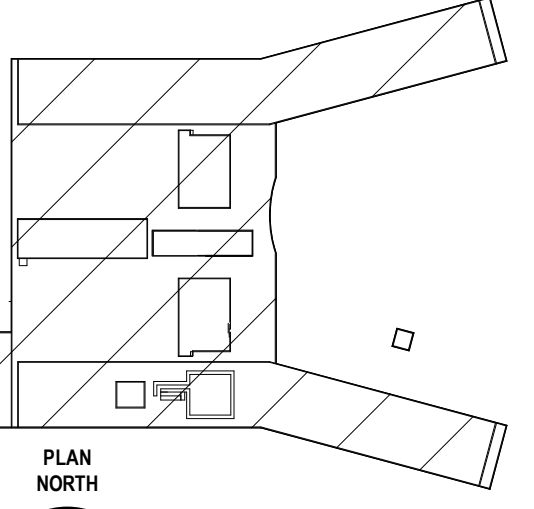
Sheet Number
E-101C

Project Status
** Work in Progress / Issued for Permit / etc...





KEY PLAN



TRUE NORTH

- Project Manager
- Project Designer
- Project Architect
- Landscape Architect
- Civil Engineer
- Structural Engineer
- Mechanical Engineer
- Electrical Engineer
- Plumbing Engineer
- Interior Designer
- Equipment Planner
- Wayfinding

Sheet Reviewer | Author

MARK	DATE	DESCRIPTION
1	2022/09/30	ISSUED FOR PRE-CONSULTATION
2	2022/10/26	DRAFT FOR 90% SD
3	2022/11/30	ISSUED FOR EPC & FLUDA - 1ST SUBMISSION

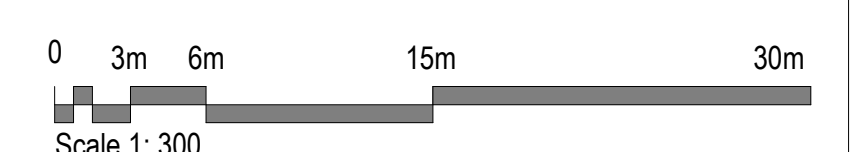
Project Number: 22150.001
Original Issue: 09/3/22

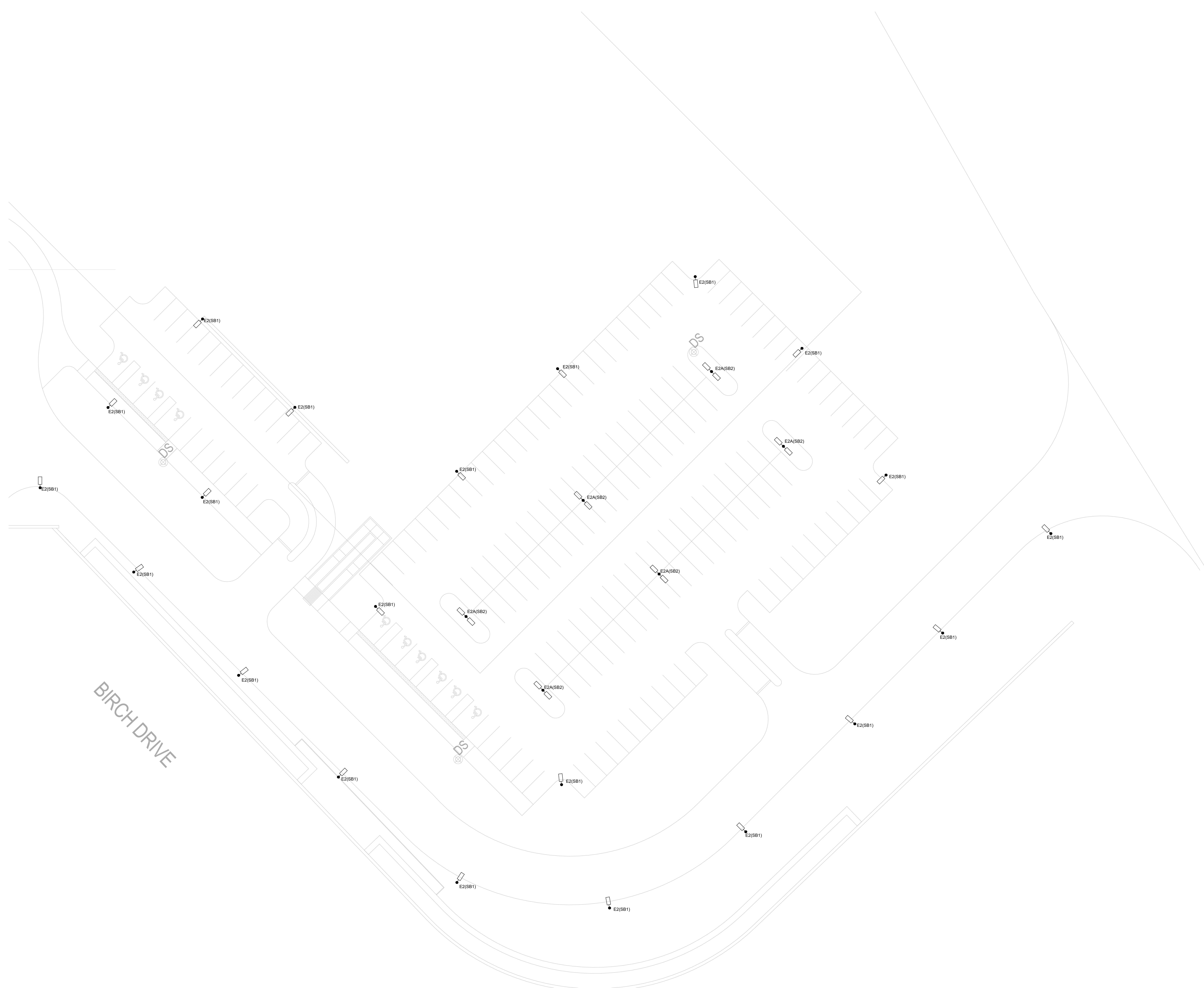
PRELIMINARY
NOT FOR CONSTRUCTION

Sheet Name
**ELECTRICAL SITE
PLAN 4 OF 5**

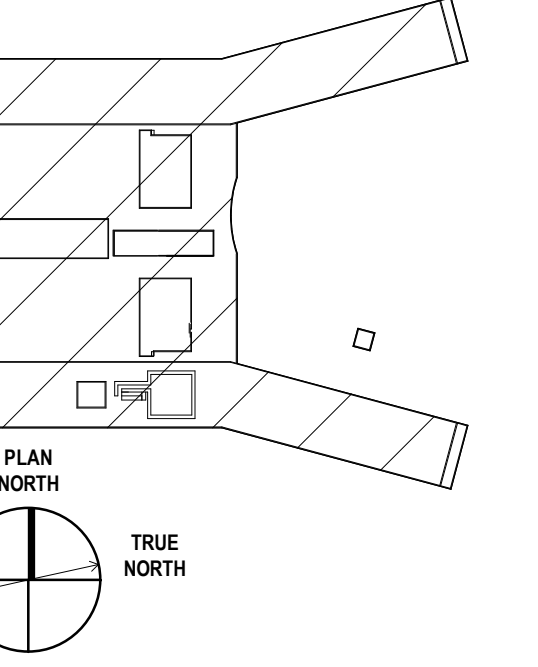
Sheet Number
E-101D

Project Status
** Work in Progress / Issued for Permit / etc...





KEY PLAN



Project Manager
Project Designer
Project Architect
Landscape Architect
Civil Engineer
Structural Engineer
Mechanical Engineer
Electrical Engineer
Plumbing Engineer
Interior Designer
Equipment Planner
Wayfinding

Sheet Reviewer | Author

MARK	DATE	DESCRIPTION
1	2022/09/30	ISSUED FOR PRE-CONSULTATION
2	2022/10/26	DRAFT FOR 90% SD
3	2022/11/30	ISSUED FOR EPC & FLUDA - 1ST SUBMISSION

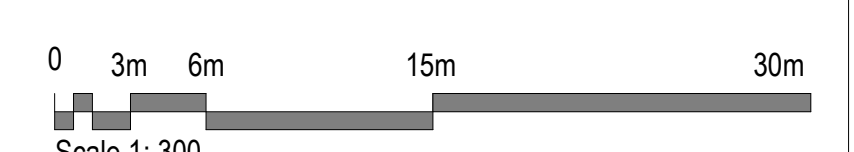
Project Number: 22150.001
Original Issue: 09/30/22

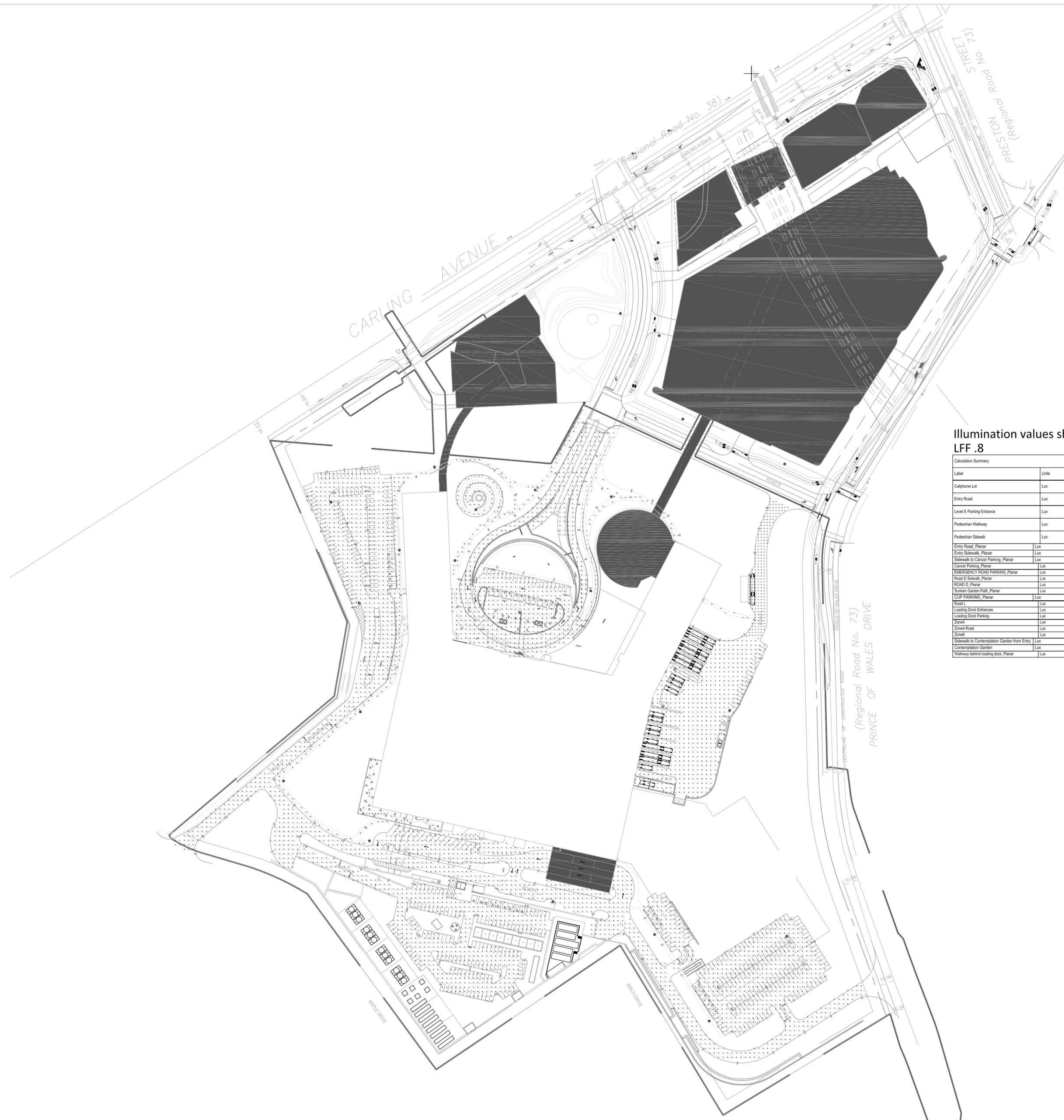
PRELIMINARY
NOT FOR CONSTRUCTION

Sheet Name
**ELECTRICAL SITE
PLAN 5 OF 5**

Sheet Number
E-101E

Project Status
** Work in Progress / Issued for Permit / etc...



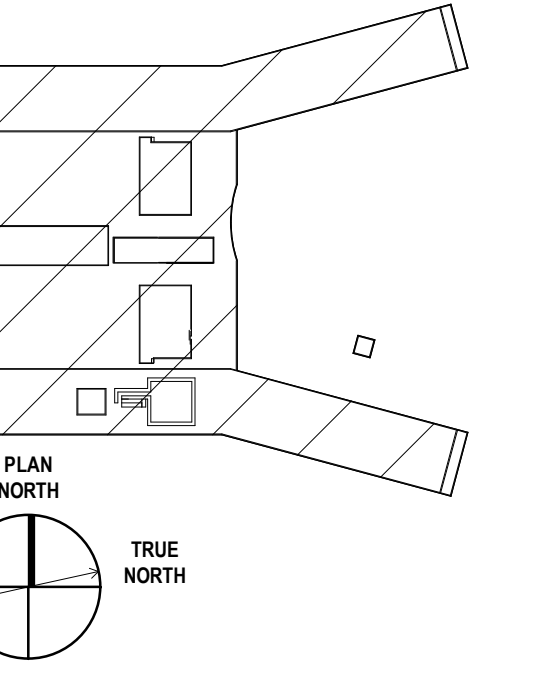


Illumination values shown
LFF .8

Location	Units	Value
Lot 1	Lux	15.14
Lot 2	Lux	15.14
Lot 3	Lux	15.14
Lot 4	Lux	15.14
Lot 5	Lux	15.14
Lot 6	Lux	15.14
Lot 7	Lux	15.14
Lot 8	Lux	15.14
Lot 9	Lux	15.14
Lot 10	Lux	15.14
Lot 11	Lux	15.14
Lot 12	Lux	15.14
Lot 13	Lux	15.14
Lot 14	Lux	15.14
Lot 15	Lux	15.14
Lot 16	Lux	15.14
Lot 17	Lux	15.14
Lot 18	Lux	15.14
Lot 19	Lux	15.14
Lot 20	Lux	15.14
Lot 21	Lux	15.14
Lot 22	Lux	15.14
Lot 23	Lux	15.14
Lot 24	Lux	15.14
Lot 25	Lux	15.14
Lot 26	Lux	15.14
Lot 27	Lux	15.14
Lot 28	Lux	15.14
Lot 29	Lux	15.14
Lot 30	Lux	15.14
Lot 31	Lux	15.14
Lot 32	Lux	15.14
Lot 33	Lux	15.14
Lot 34	Lux	15.14
Lot 35	Lux	15.14
Lot 36	Lux	15.14
Lot 37	Lux	15.14
Lot 38	Lux	15.14
Lot 39	Lux	15.14
Lot 40	Lux	15.14
Lot 41	Lux	15.14
Lot 42	Lux	15.14
Lot 43	Lux	15.14
Lot 44	Lux	15.14
Lot 45	Lux	15.14
Lot 46	Lux	15.14
Lot 47	Lux	15.14
Lot 48	Lux	15.14
Lot 49	Lux	15.14
Lot 50	Lux	15.14
Lot 51	Lux	15.14
Lot 52	Lux	15.14
Lot 53	Lux	15.14
Lot 54	Lux	15.14
Lot 55	Lux	15.14
Lot 56	Lux	15.14
Lot 57	Lux	15.14
Lot 58	Lux	15.14
Lot 59	Lux	15.14
Lot 60	Lux	15.14
Lot 61	Lux	15.14
Lot 62	Lux	15.14
Lot 63	Lux	15.14
Lot 64	Lux	15.14
Lot 65	Lux	15.14
Lot 66	Lux	15.14
Lot 67	Lux	15.14
Lot 68	Lux	15.14
Lot 69	Lux	15.14
Lot 70	Lux	15.14
Lot 71	Lux	15.14
Lot 72	Lux	15.14
Lot 73	Lux	15.14
Lot 74	Lux	15.14
Lot 75	Lux	15.14
Lot 76	Lux	15.14
Lot 77	Lux	15.14
Lot 78	Lux	15.14
Lot 79	Lux	15.14
Lot 80	Lux	15.14
Lot 81	Lux	15.14
Lot 82	Lux	15.14
Lot 83	Lux	15.14
Lot 84	Lux	15.14
Lot 85	Lux	15.14
Lot 86	Lux	15.14
Lot 87	Lux	15.14
Lot 88	Lux	15.14
Lot 89	Lux	15.14
Lot 90	Lux	15.14
Lot 91	Lux	15.14
Lot 92	Lux	15.14
Lot 93	Lux	15.14
Lot 94	Lux	15.14
Lot 95	Lux	15.14
Lot 96	Lux	15.14
Lot 97	Lux	15.14
Lot 98	Lux	15.14
Lot 99	Lux	15.14
Lot 100	Lux	15.14

<p>Catalog Number: L03-VK-2-735-ASYM-C-ER Mounting Height: 3.8 m</p>	<p>Catalog Number: L03-VK-3-735-ASYM-C-ER Mounting Height: 3.8 m</p>	<p>Catalog Number: L01-VK-2-735-ASYM-C-ER Mounting Height: 3.8 m</p>
<p>Catalog Number: P20-C-A13-635-145-AH1-8H Mounting Height: 6 m</p>	<p>Catalog Number: P20-C-A13-635-145-AH1-8H (DOUBLE HEAD) Mounting Height: 6 m</p>	<p>Catalog Number: P20-C-A13-635-145-AH1-8H Mounting Height: 6 m</p>
<p>Catalog Number: WEDGE2 LED UP-SOX-40-81T-AYVOLT Mounting Height: 1.3 m</p>	<p>Catalog Number: WEDGE2 LED W2-356-80-VF-AYVOLT Mounting Height: 1.6 m</p>	<p>Catalog Number: ADORE-HYDRA H100-VK-32 Mounting Height: 301 mm</p>
<p>Catalog Number: H3-A35-1000A-01 Mounting Height: REFER TO SITE PLANS CER MS</p>	<p>Catalog Number: B3RA-F-002-35x3-120-3-RL-01-BA-LAN Mounting Height: Vary Ht with Canopy Height</p>	<p>Catalog Number: BEGA - 77 080 Mounting Height: RECESSED INTO GRADE</p>

KEY PLAN



- Project Manager
- Project Designer
- Project Architect
- Landscape Architect
- Civil Engineer
- Structural Engineer
- Mechanical Engineer
- Electrical Engineer
- Planning Engineer
- Interior Designer
- Equipment Planner
- Weyfing

Sheet Reviewer | Author

MARK	DATE	DESCRIPTION
1	2022/09/30	ISSUED FOR PRE-CONSULTATION
2	2022/10/28	DRAFT FOR 90% SD
3	2022/11/30	ISSUED FOR EPC & FLUDA - 1ST SUBMISSION

Project Number: 22150.001
Original Issue: 09/11/22

PRELIMINARY
NOT FOR CONSTRUCTION

SHEET NAME
ELECTRICAL SITE
PLAN - FIXTURE
SCHEDULE

SHEET NUMBER
E-101F

Project Status: ** Work in Progress / Issued for Permit / etc...

