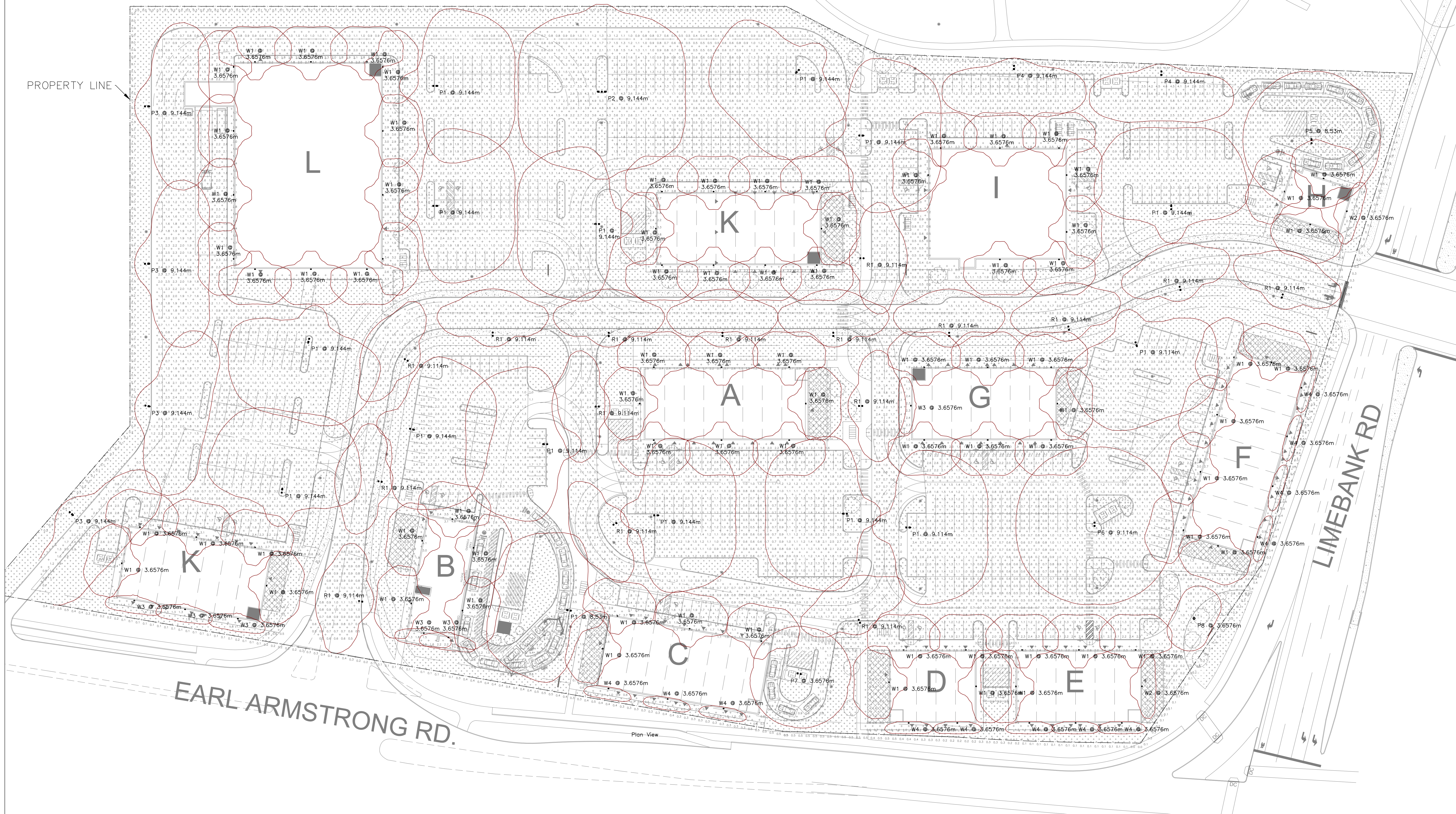


An exact copy of all working documents including, without limitation, the original of the present document or plan is kept on file by J.R.P. Engineering. Any modification carried out to this document or plan or to accompanying documents without written authorization by the engineer is prohibited.

Authorized modifications must be signed and sealed by an engineer and this engineer will be completely responsible for these modifications. J.R.P. Engineering is not and will not be responsible for the consequences of these modifications or for modifications carried out without its consent.



1 SITE LIGHTING - PHOTOMETRIC
E-1 1:400

LIGHTING FIXTURE SCHEDULE						
TYPE	MAKE/MODEL	VOLTAGE	MOUNT	WATTAGE	LUMENS	NOTES
P1	LITHONIA LIGHTING RSX2 LED PS 30K R4	120V	POLE	150	20043	
P2	LITHONIA LIGHTING RSX2 LED PS 30K R4	120V	POLE	300	20043	
P3	LITHONIA LIGHTING RSX2 LED P3 30K R3 HS	120V	POLE	150	13800	
P4	LITHONIA LIGHTING RSX2 LED P3 30K R2 HS	120V	POLE	151	15011	
P5	LITHONIA LIGHTING RSX2 LED P3 30K R5	120V	POLE	150	20300	
P6	LITHONIA LIGHTING RSX2 LED P5 30K R5	120V	POLE	214	26742	
P7	LITHONIA LIGHTING RSX2 LED P2 30K R5	120V	POLE	115	16075	
P8	LITHONIA LIGHTING RADPT P2 30K PATH	120V	POLE	38	3824	
R1	AMERICAN ELECTRIC LIGHTING ATBS P30 XXXX R2 3K	120V	POLE	60	8090	Autobahn ATBS, P30 Performance Package, Roadway Type II, 3000K CCT, 70 CRI Min.
W1	LITHONIA LIGHTING WDGE2 LED P4 30K 70CRI T4M	120V	WALL	47	4370	
W2	LITHONIA LIGHTING WDGE2 LED P2 30K 70CRI T1S	120V	WALL	19	2075	
W3	LITHONIA LIGHTING WDGE2 LED P1 30K 70CRI T1S	120V	WALL	12	1273	
W4	LITHONIA LIGHTING WDGE2 LED P0 30K 70CRI T1S	120V	WALL	7	730	

No	DESCRIPTION	DATE
0	ISSUED FOR SITE PLAN APPLICATION	DEC 15 2022

REVISIONS



Client:

Project: EARL ARMSTRONG
SITE PLAN
1515 EARL ARMSTRONG
OTTAWA, ONTARIO

Drawing title: ELECTRICAL
SITE LIGHTING PLAN

Scale:	AS NOTED	Drawn by:	C.M.
Designed by:	C.M.	Reviewed by:	M.G.
Approved by:	M.G.	Date:	AUG 2022

Project No.:	590-2202	Drawing No.:	SP-E1 of 1
--------------	----------	--------------	---------------