

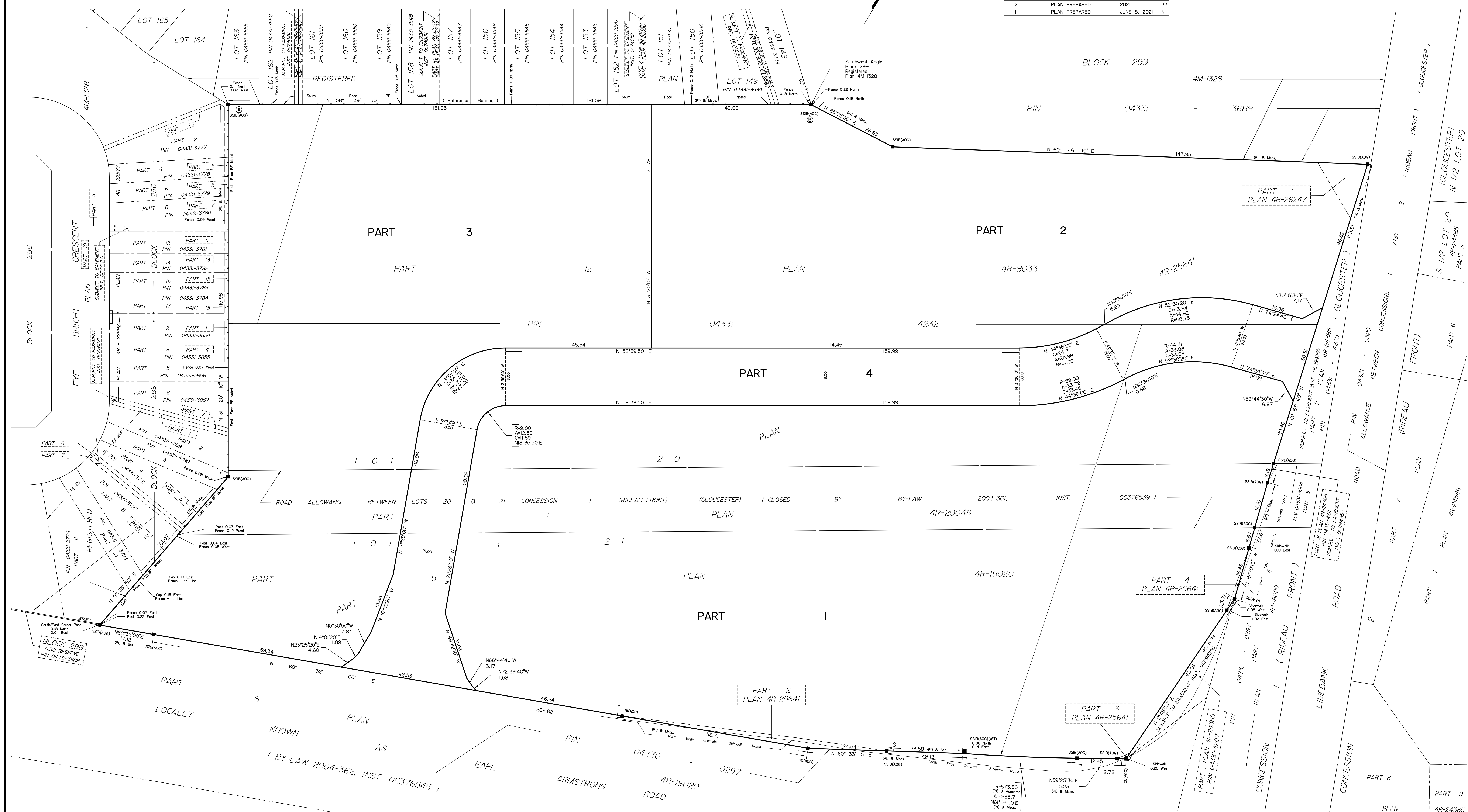
REVISION SCHEDULE			
NO.	REVISION	DATE	BY
4	REVISIONS PER SITE PLAN	APR. 28, 2022	N
3	UPDATED ROUNDABOUT DESIGN	APRIL 25, 2022	DG
2	PLAN PREPARED	2021	??
1	PLAN PREPARED	JUNE 8, 2021	N

SCHEDULE			
AREA (Sq.m.)	PART	LOT	CONCESSION
25 302.4	1	PART OF LOTS 20 and 21	CONCESSION 1 (RIDEAU FRONT)
12 960.4	2	PART OF THE ROAD ALLOWANCE BETWEEN LOTS 20 & 21 (CLOSED BY BY-LAW 2004-361, INST. OC376539)	
16 422.5	3	PART OF LOT 21	
6 842.0	4	PART OF THE ROAD ALLOWANCE BETWEEN LOTS 20 & 21 (CLOSED BY BY-LAW 2004-361, INST. OC376539)	

I REQUIRE THIS PLAN TO BE DEPOSITED UNDER THE LAND TITLES ACT.
DATE: _____

PLAN 4R-
RECEIVED AND DEPOSITED DATE: _____

REPRESENTATIVE FOR THE LAND TITLES DIVISION OF OTTAWA-CARLETON NO. 4.



PLAN OF SURVEY OF
PART OF LOTS 20 and 21
and
PART OF THE ROAD ALLOWANCE
BETWEEN LOTS 20 and 21
(As Closed by By-Law 2004-361, Inst. OC376539)
CONCESSION 1 (RIDEAU FRONT)
Geographic Township of Gloucester
CITY OF OTTAWA
Surveyed by Annis, O'Sullivan, Vollebek Ltd.

Scale 1 : 500

Metric
DISTANCES AND COORDINATES SHOWN ON THIS PLAN ARE IN METRES AND CAN BE CONVERTED TO FEET BY DIVIDING BY 0.3048.

Surveyor's Certificate
I CERTIFY THAT:
1. This survey and plan are correct and in accordance with the Surveys Act, the Surveyors Act and the Land Titles Act and the regulations made under them.
2. The survey was completed on the ___ day of _____, 2022.

Date: _____
T. Hirtwick
Ontario Land Surveyor

This plan relates to AOLS Plan Submission form number: V-

- Notes & Legend**
- Denotes Survey Monument Planted
 - Survey Monument Found
 - SIB Standard Iron Bar
 - SSIB Short Standard Iron Bar
 - CC Cut Cross
 - IB Iron Bar
 - |— Survey Monument (0.3 long)
 - (WT) Witness
 - (AOG) Annis, O'Sullivan, Vollebek Ltd.
 - M Measured
 - CLF Chain Link Fence
 - BF Board Fence
 - WSBF Wooden Sound Barrier Fence
 - (P1) Plan 4R-25641
 - (P2) Plan 4R-26247

Distances shown on this plan are ground distances and can be converted to grid distances by multiplying by the combined scale factor of 0.99997.

Bearings are grid, derived from Can-Net 2016 Real Time Network GPS observations on reference points A and B, shown hereon, having a bearing of N 58°39'50" E and are referenced to Specified Control Points 01919791338 and 01919871649, MTM Zone 9 (76°30' West Longitude) NAD-83 (original).

Coordinates are derived from Can-Net 2016 Real Time Network GPS observations referenced to Specified Control Points 01919791338 and 01919871649, MTM Zone 9 (76°30' West Longitude) NAD-83 (original).

Coordinate values are to urban accuracy in accordance with O. Reg. 216/10.

• 01919791338	Northing	5006055.96	Easting	346140.91
• 01919871649	Northing	5007169.87	Easting	372425.05
• Point A	Northing	5015994.61	Easting	369749.71
• Point B	Northing	5016089.05	Easting	369904.81

Caution: Coordinates cannot, in themselves, be used to re-establish corners or boundaries shown on this plan.

ANNIS, O'SULLIVAN, VOLLEBEK LTD.
14 Concourse Gate, Suite 500
Nepean, Ont K2E 7S9
Phone: (613) 727-0850 / Fax: (613) 727-1079
Email: Nepean@annis-ot.com

Ontario Land Surveyors (S.O. 220/02) License: P.L. 15, 20, 21, G1, 67, G, R, 24