

# 1Door4Care - CHEO Integrated Treatment Centre: Parking Garage

ISSUED FOR SPC SUBMISSION  
2023-08-16

VOLUME 1 : ARCHITECTURE



© 2023 Montgomery Sisam Architects Inc.  
All rights reserved. No part of this document may  
be reproduced or utilized in any form, without prior  
written authorization by Montgomery Sisam Architects Inc.  
2023-08-16 1:15:49 PM



Montgomery Sisam  
ARCHITECTS INC.

ENTUITIVE



MODERN  
NIAGARA

MULVEY & BANANI



WALTER FEDY

VERTTECHS  
LANDSCAPE ARCHITECTS



VORTEX FIRE

CANETA Energy  
A Division of Canada Research Inc.



Thornton  
Tomasetti

Gensler

FOTENN

NOVATECH



ARIUM







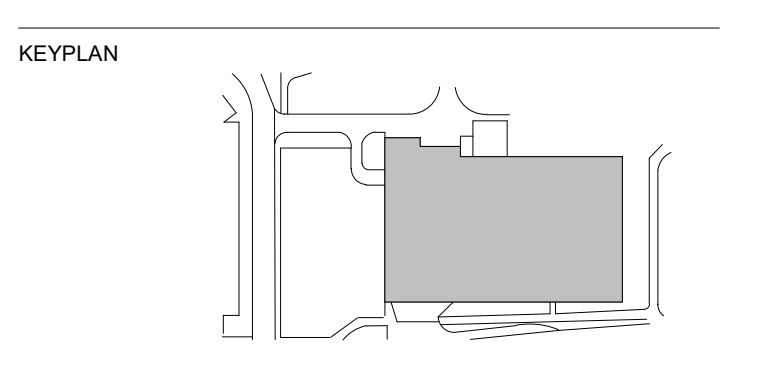




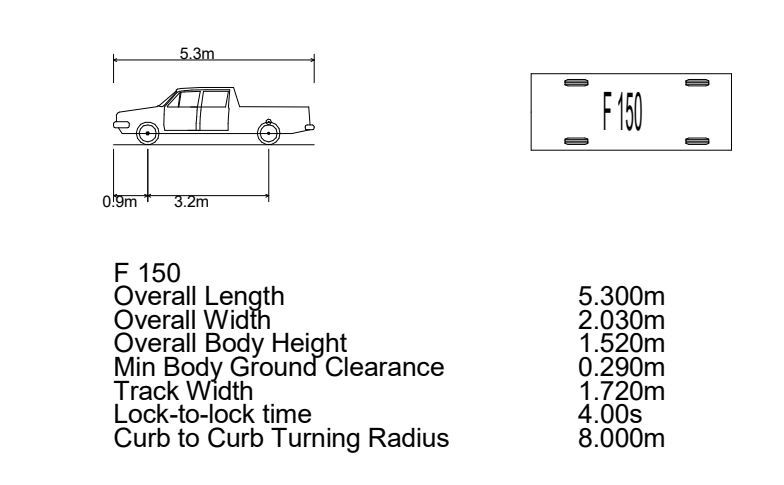




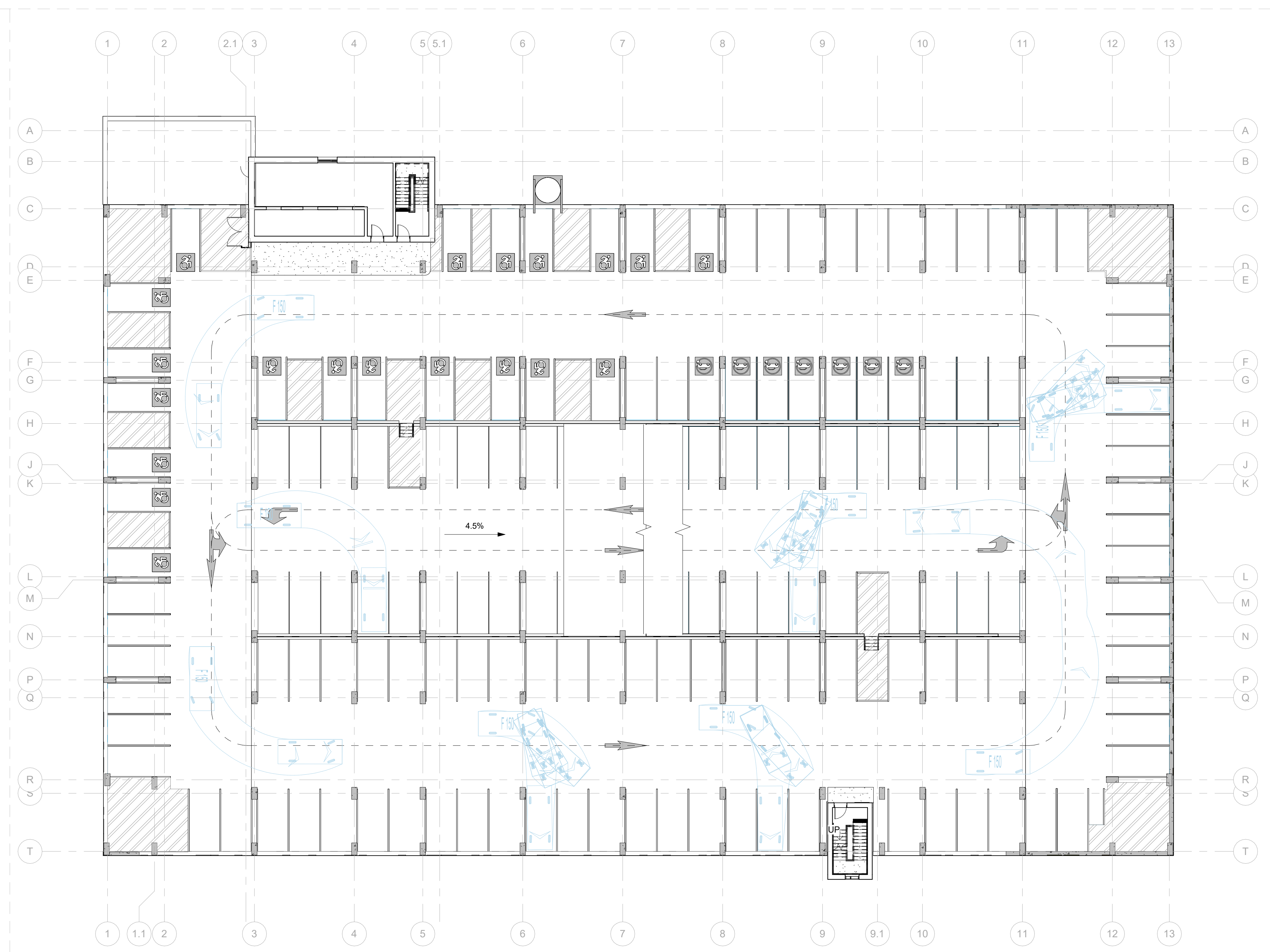




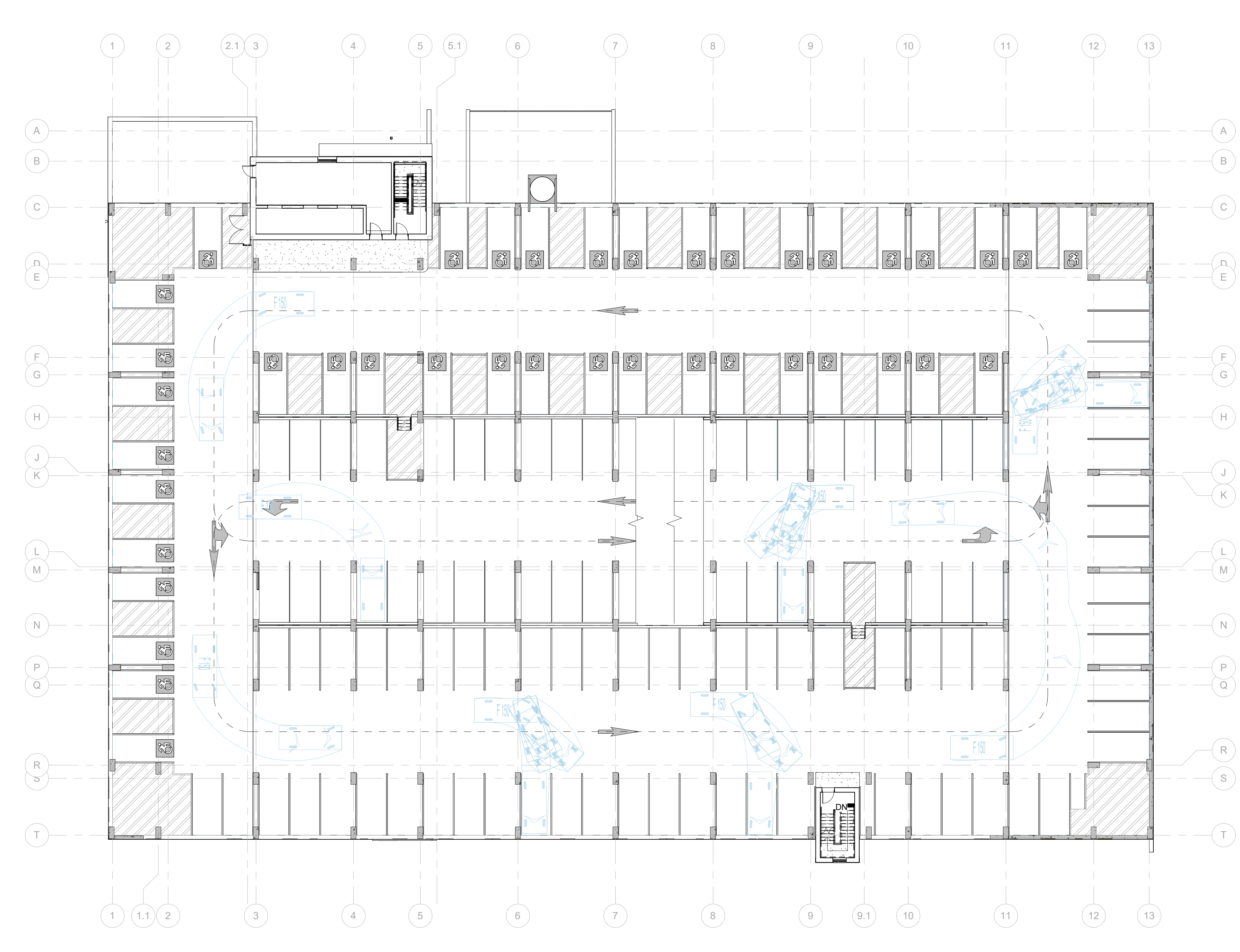
**VEHICLE DIMENSIONS - LIGHT PICKUP TRUCK (F 150)**



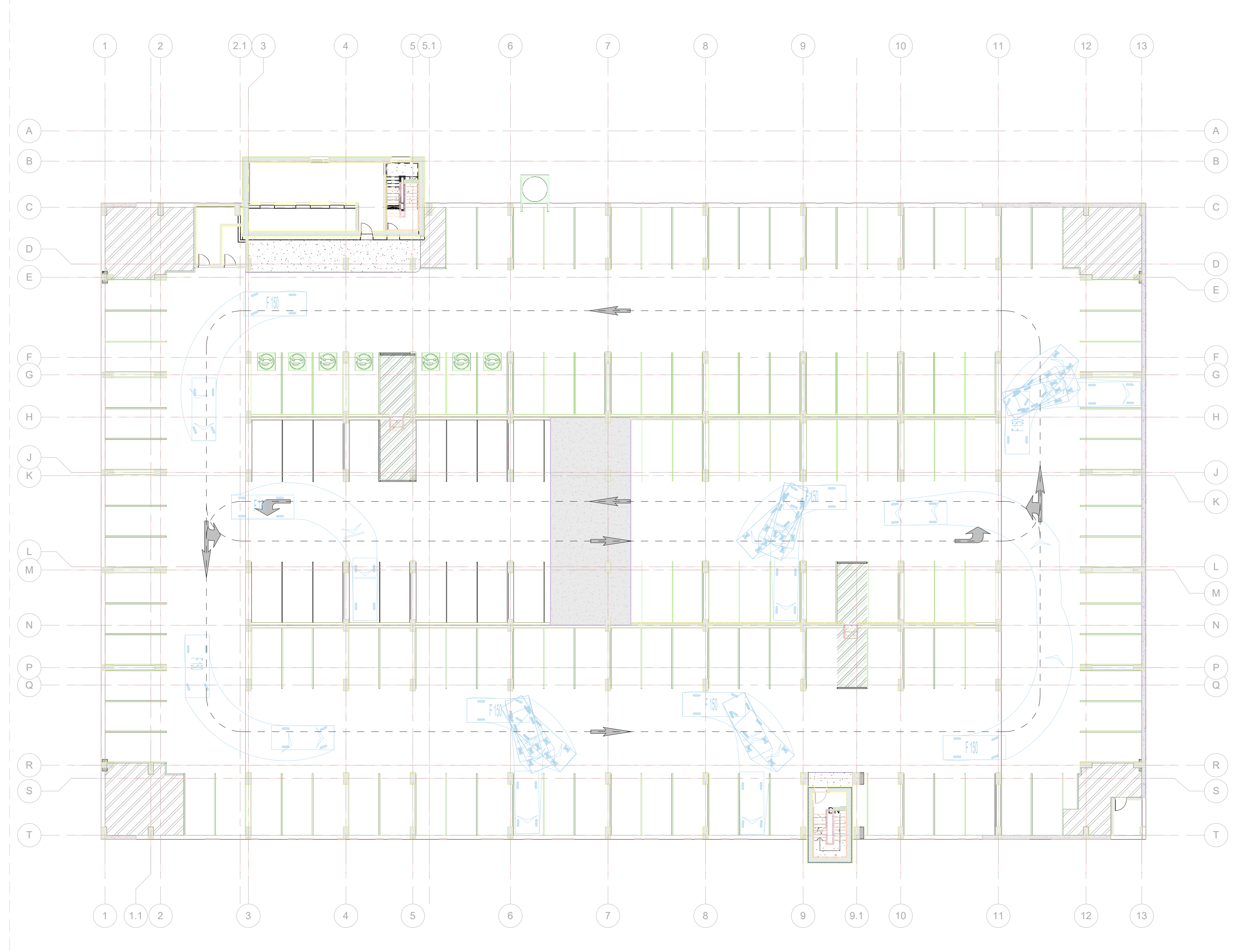
**1 Level 01 - VEHICLE TRACKING, TRUCK**  
AP0602B Scale: 1:200



**3 Level 03 - VEHICLE TRACKING, TRUCK**  
AP0602B Scale: 1:200



**2 Level 02 - VEHICLE TRACKING, TRUCK**  
AP0602B Scale: 1:200



**4 Level 04 - VEHICLE TRACKING, TRUCK**  
AP0602B Scale: 1:200

0 2023-08-16 ISSUED FOR EPC SUBMISSION  
DATE: 2023-08-16  
revisions: 01

ONTARIO ASSOCIATION OF ARCHITECTS  
ARCHITECTS  
JASON CHANG  
LICENCE #8932

All drawing and specifications are the property of the architect. The contractor shall verify all dimensions and information on site and report any discrepancy to architect before proceeding.

**1Door4Care: CHEO Integrated Treatment Centre: Parking Garage**

401 Smyth Road, Ottawa ON

**VEHICLE TRACKING DIAGRAMS - LIGHT PICKUP TRUCK**

scale: 1:200  
drawn by: Author  
reviewed by: Checker  
job number: 2021-0801-19  
plot date: 2023-08-16  
drawing number:

2023-08-16 10:20:44 PM C:\Users\jchang\OneDrive\Documents\18912\10\_0\_0\wdr\wdr.rvt

FLOOR PLAN NOTES

- ① CONCRETE COLUMN, YELLOW COLOUR VIA ADDITIVE, SMOOTH FINISH
- ② CONCRETE SPANDELS LEVELS 2/3, TAN COLOUR VIA ADDITIVE, SMOOTH SANDBLAST FINISH
- ③ CONCRETE SPANDELS LEVEL 1, DARK GREY COLOUR, BLOCK FORMER FINISH
- ④ RESERVED
- ⑤ CONCRETE PANEL
- ⑥ CONCRETE PANEL WITH ALUMINUM PANEL EXTERIOR FINISH
- ⑦ CONCRETE SLAB ON GRADE
- ⑧ CONCRETE SLAB TOPPING TO HAVE WASH AT EDGES OF WALLS AND SPANDELS TOPPING TO BE THE SAME TO WALLS AND SPANDELS. REFER TO PRECAST SHOP DRAWINGS FOR BIDDING DETAIL.
- ⑨ SECTORED METAL PANEL, REFER TO ARCHITECTURAL ELEVATIONS FOR PATTERN, ARRANGEMENT AND COLOUR DISTRIBUTION. REFER TO ARCHITECTURAL DETAILS FOR SECTION DETAILS.
- ⑩ STAR TOWER STAR
- ⑪ RESERVED
- ⑫ RESERVED
- ⑬ BOLLARD, WITH FOOTING
- ⑭ BOLLARD, SURFACE MOUNTED
- ⑮ PERMANENT SNOW CHUTE

WALL ASSEMBLIES:

- W.1 300mm CAST-IN-PLACE CONCRETE WALL
- W.2 ALUMINUM PANELS (COLOUR PER ELEVATION) 50mm THERMAL ISOLATOR CLIPS 25mm AIRSPACE 75mm SPRAY FOAM INSULATION AV BARRIER MEMBRANE 300mm CP CONCRETE
- W.3 90mm ARCHITECTURAL BLOCK 25mm AIRSPACE 75mm SPRAY FOAM INSULATION AV BARRIER MEMBRANE 300mm CP CONCRETE
- W.4 90mm ARCHITECTURAL BLOCK 25mm AIRSPACE 75mm SPRAY FOAM INSULATION AV BARRIER MEMBRANE 190mm CONCRETE MASONRY UNITS
- W.5 200mm ARCHITECTURAL BLOCK
- W.6 190mm CONCRETE MASONRY UNITS
- W.7 300mm CAST-IN-PLACE CONCRETE PERIMETER STRUCTURAL SPANDELS, 100 WF TYP.
- W.8 190mm CONCRETE MASONRY UNITS
- W.9 240mm CONCRETE MASONRY UNITS
- W.10 200mm CAST-IN-PLACE CONCRETE WALL
- W.11 200mm CAST-IN-PLACE CONCRETE WALL
- W.12 90mm ARCHITECTURAL BLOCK 25mm AIRSPACE 75mm SPRAY FOAM INSULATION AV BARRIER MEMBRANE 300mm CP CONCRETE
- W.13 ALUMINUM PANELS (COLOUR PER ELEVATION) 50mm THERMAL ISOLATOR CLIPS AV BARRIER MEMBRANE 300mm CP CONCRETE
- W.14 190mm CONCRETE MASONRY UNITS

FINISH LEGEND:

- NOTE: REFER TO FINISH SCHEDULE FOR PRODUCT AND COLOUR SPECIFICATION.
- WALL FINISHES**
- W.1 WHITE PAINT
  - W.2 ACCENT PAINT
  - W.3 ACCENT PAINT
- CEILING FINISHES**
- W.4 RUBBER BASE

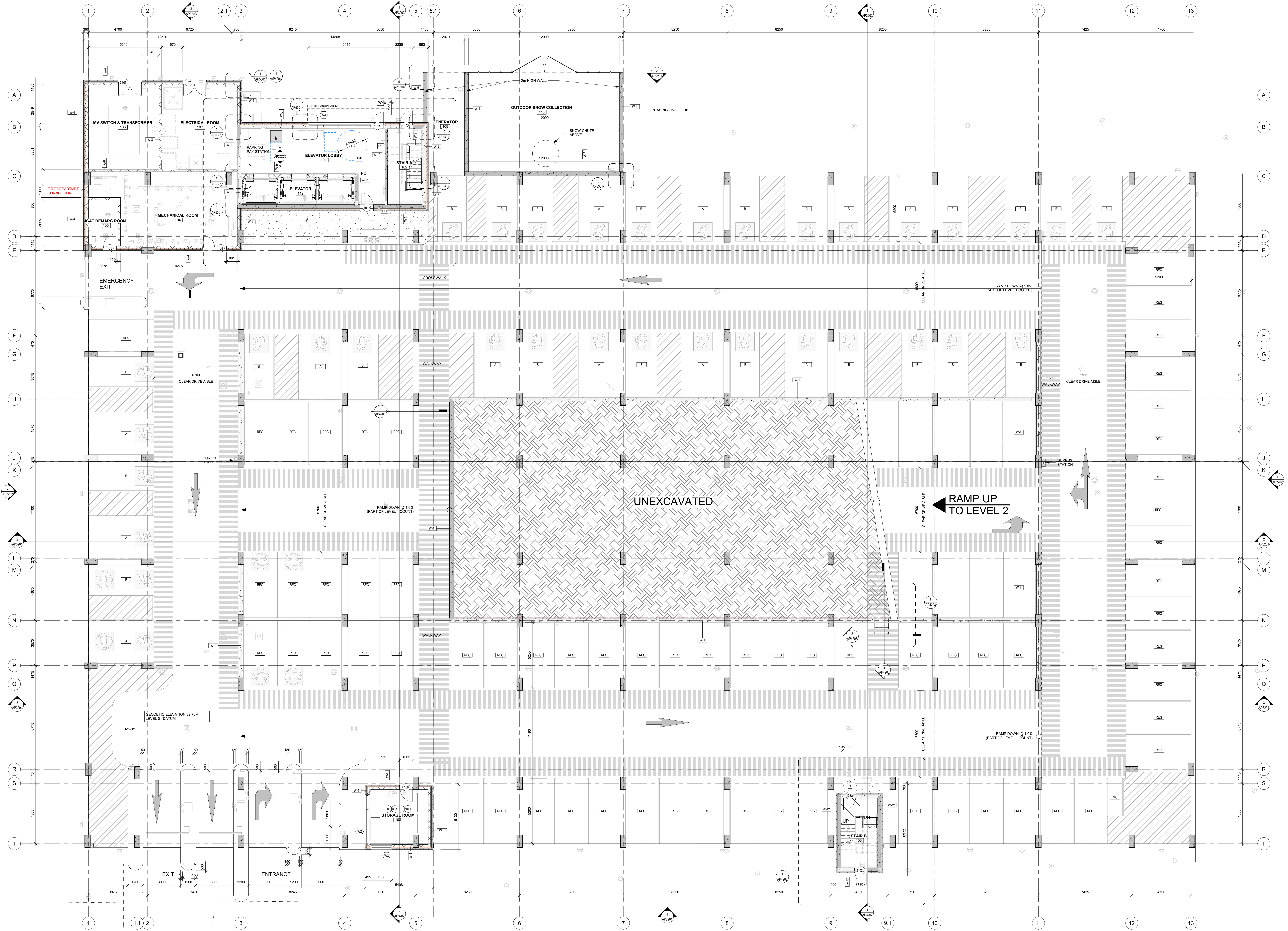
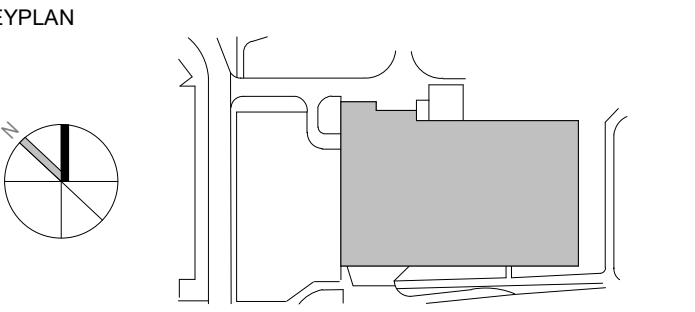
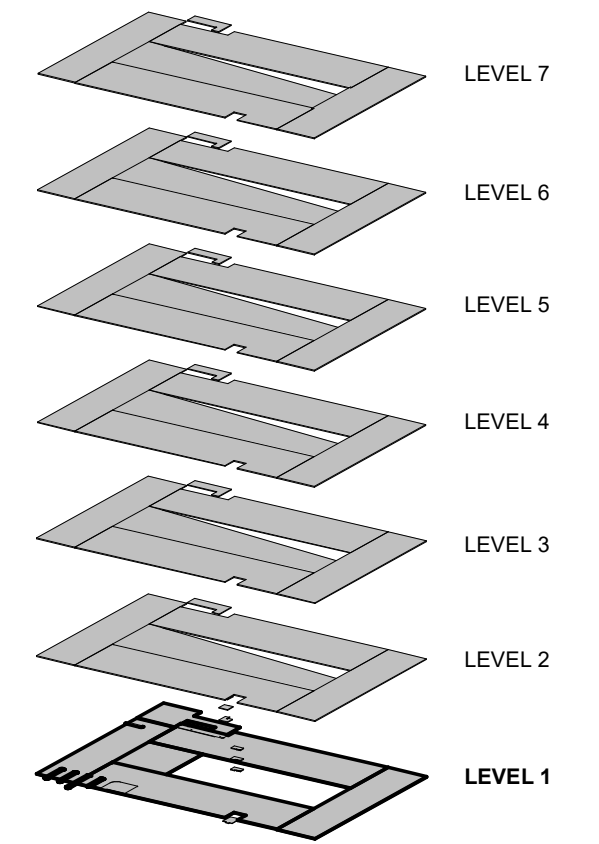
DRAWING LEGEND:

- A B C ACCESSIBLE PARKING
- REG REGULAR PARKING STALL. REFER TO 1/AP0401.2/AP0401.3/AP0401.
- MC MOTORCYCLE PARKING
- PD ACCESSIBLE ENTRANCE W/ POWER DOOR OPERATOR & ACCESSIBLE PUSH BUTTON
- ROLLAR
- PAINTED TRAFFIC ARROWS
- TACTILE PAVING/FLOORING STRIPS
- STRIPED PEDESTRIAN WALKWAY
- PARKING LINES
- TRAFFIC COATING MEMBRANE
- SEALED CONCRETE
- CERAMIC FLOOR TILE
- TRAFFIC COATING MEMBRANE
- FIRE SPRAY (TBO)
- ACOUSTIC CEILING TILE
- CATCH BASIN
- DURESS STATION

Parking Schedule - LEVEL 01

Description	Size	Count
BARRIER FREE - TYPE A (VAN ACCESSIBLE)	Parking: 3.4m x 5.2m	12
BARRIER FREE - TYPE B	Parking: 2.4m x 5.2m	22
MOTORCYCLE PARKING	Parking: 2m x 3.3m	1
REGULAR PARKING STALL	Parking: 2.6m x 5.2m	61

Level 01: 96



2023-08-16 11:56:30 AM C:\pwworking\2023-08-16\10\_...\_mtd\mtd.rvt

2 2023-08-16 ISSUED FOR SPIC SUBMISSION  
1 2023-04-01 ISSUED FOR SPIC SUBMISSION  
0 2023-04-01 ISSUED FOR TECHNICAL SUBMISSION  
# DATE REVISION

ONTARIO ASSOCIATION OF ARCHITECTS  
ARCHITECTS ONLY  
JASON CHANG  
LICENCE #8982

All drawing and specifications are the property of the architect. The contractor shall verify all dimensions and information on site and report any discrepancy to architect before proceeding.

1Door4Care: CHEO Integrated Treatment Centre: Parking Garage

401 Smyth Road, Ottawa ON

LEVEL 1 - OVERALL PLAN

scale: 1:100  
drawn by: JCV/VD  
reviewed by: JCV/VD  
job number: 2021-0801-19  
plot date: 2023-08-16  
drawing number:

City of Ottawa File No. D07-12-22-0170  
City of Ottawa Plan No. 18912

AP1401

FLOOR PLAN NOTES

- CONCRETE COLUMN YELLOW COLOUR VIA ADDITIVE, SMOOTH FINISH
- CONCRETE SPANDREL (LEVELS 2-7), TAN COLOUR VIA ADDITIVE, SMOOTH SANDLAST FINISH
- CONCRETE SPANDREL (LEVEL 1), DARK GREY COLOUR, BLOCK FORMLINER FINISH
- RESERVED
- CONCRETE PANEL
- CONCRETE PANEL WITH ALUMINUM PANEL EXTERIOR FINISH
- CONCRETE SLAB ON GRC
- CONCRETE SLAB TOPPING TO HAVE WASH AT EDGES OF WALLS AND SPANDRELS. TOPPING TO BE THICKER TO WALLS AND SPANDRELS. REFER TO PRECAST SHOP DRAWINGS FOR BIDDING DETAIL
- DECORATIVE METAL PANEL - REFER TO ARCHITECTURAL ELEVATIONS FOR PATTERN
- ARRANGEMENT AND COLOUR DISTRIBUTION REFER TO ARCHITECTURAL DETAILS FOR DESIGN DETAILS
- STAR TOWER STAR
- RESERVED
- RESERVED
- BOLLARD WITH FOOTING
- BOLLARD SURFACE MOUNTED
- PERMANENT SNOW CHUTE

WALL ASSEMBLIES:

- W-1 300mm CAST-IN-PLACE CONCRETE WALL
- W-2 ALUMINUM PANELS (COLOUR PER ELEVATIONS) 50mm THERMAL INSULATOR CLIPS 25mm AIRSPACE 75mm SPRAY FOAM INSULATION AV BARRIER MEMBRANE 300mm CP CONCRETE
- W-3 90mm ARCHITECTURAL BLOCK 25mm AIRSPACE 75mm SPRAY FOAM INSULATION AV BARRIER MEMBRANE 300mm CP CONCRETE
- W-4 90mm ARCHITECTURAL BLOCK 25mm AIRSPACE 75mm SPRAY FOAM INSULATION AV BARRIER MEMBRANE 300mm CP CONCRETE
- W-5 300mm ARCHITECTURAL BLOCK
- W-6 180mm CONCRETE MASONRY UNITS
- W-7 200mm CAST-IN-PLACE CONCRETE WALL
- W-8 200mm CAST-IN-PLACE CONCRETE WALL
- W-9 50mm ARCHITECTURAL BLOCK 25mm AIRSPACE 25mm THERMAL INSULATOR CLIPS AV BARRIER MEMBRANE 300mm CP CONCRETE
- W-10 50mm ARCHITECTURAL BLOCK 25mm AIRSPACE 25mm THERMAL INSULATOR CLIPS AV BARRIER MEMBRANE 300mm CP CONCRETE
- W-11 300mm ARCHITECTURAL BLOCK
- W-12 180mm CONCRETE MASONRY UNITS

FINISH LEGEND:

- NOTE: REFER TO FINISH SCHEDULE FOR PRODUCT AND COLOUR SPECIFICATION
- WALL FINISHES**
- WF-1 WHITE PAINT
  - WF-2 ACCENT PAINT
  - WF-3 ACCENT PAINT
  - WF-4 ACCENT PAINT
- FLOOR FINISHES**
- FC-1 TRAFFIC COATING MEMBRANE
  - FC-2 SEALED CONCRETE
  - FC-3 CERAMIC FLOOR TILE
- CEILING FINISHES**
- CE-1 RUBBER BASE
  - CE-2 CERAMIC CEILING TILE

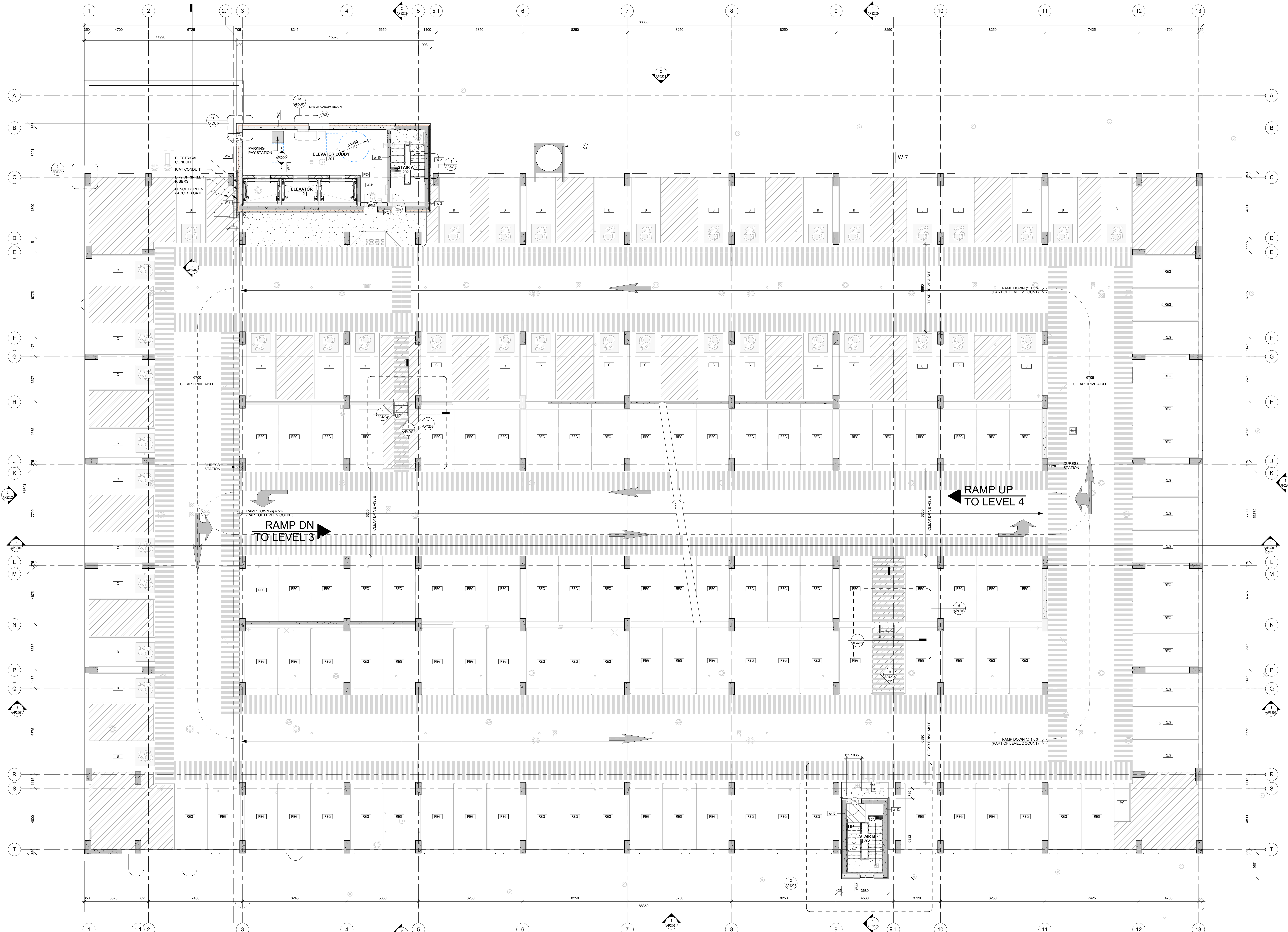
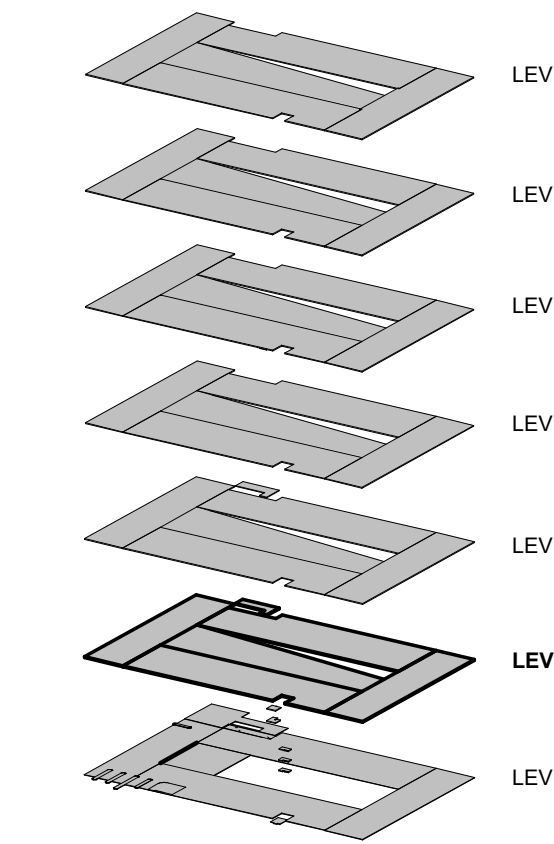
DRAWING LEGEND:

- A B C ACCESSIBLE PARKING
- REG REGULAR PARKING STALL REFER TO 1/AP0401.2/AP0401.3/AP0401
- MC MOTORCYCLE PARKING
- PO ACCESSIBLE ENTRANCE W/ POWER DOOR OPERATOR & ACCESSIBLE PUSH BUTTON
- BOLLARD
- PAINTED TRAFFIC ARROWS
- TACTILE PAVING/FLOORING STRIPS
- STRIPED PEDESTRIAN WALKWAY
- PARKING LINES
- CATCH BASIN
- DURESS STATION

Parking Schedule - LEVEL 02

Description	Size	Count
Level 02		
BARRIER FREE - TYPE B	Parking - 2.4m x 5.2m	16
BARRIER FREE - TYPE C	Parking - 2.4m x 5.2m	22
MOTORCYCLE PARKING	Parking - 3m x 1.3m	1
REGULAR PARKING STALL	Parking - 2.6m x 5.2m	106

Level 02 - 147

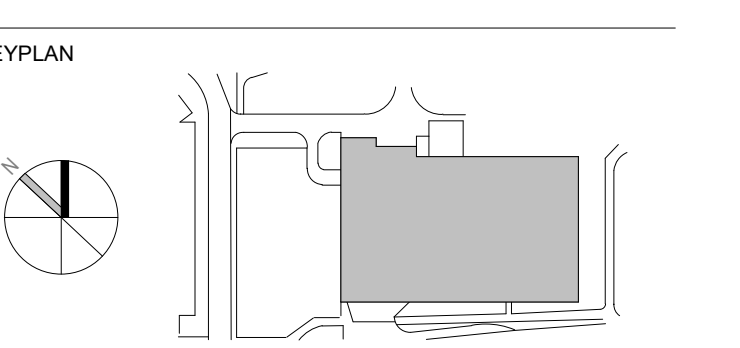


**CHEO**  
1Door4Care

**Infrastructure Ontario**

**EllisDon**  
INFRASTRUCTURE Healthcare

**WALTER FEDY**  
KITCHENER | HAMILTON | TORONTO  
905.881.1376 walterfedy.com



2 2023-08-16 ISSUED FOR SPC SUBMISSION  
1 2023-04-20 ISSUED FOR PDC SUBMISSION  
0 2023-04-20 ISSUED FOR TECHNICAL SUBMISSION

ONTOARIO ASSOCIATION OF ARCHITECTS  
ARCHITECTS 2  
JASON CHANG  
LICENCE 8992

All drawing and specifications are the property of the architect. The contractor shall verify all dimensions and information on site and report any discrepancy to architect before proceeding.

1Door4Care: CHEO Integrated Treatment Centre: Parking Garage

401 Smyth Road, Ottawa ON

LEVEL 2 - OVERALL PLAN

Scale: 1:100  
Drawn by: JCV/JP  
Reviewed by: JCV/JP  
Job number: 2021-0801-19  
Plot date: 2023-08-16  
Drawing number: AP1402

City of Ottawa File No. D07-12-22-0170  
City of Ottawa Plan No. 18912

**FLOOR PLAN NOTES**

- CONCRETE COLUMN YELLOW COLOUR VIA ADDITIVE SMOOTH FINISH
- CONCRETE SPANDREL (LEVELS 2-7) TAN COLOUR VIA ADDITIVE SMOOTH SANDBLAST FINISH
- CONCRETE SPANDREL (LEVEL 1) DARK GREY COLOUR BLOCK FORMLINER FINISH
- RESERVED
- CONCRETE PANEL
- CONCRETE PANEL WITH ALUMINUM PANEL EXTERIOR FINISH
- CONCRETE SLAB ON GRC
- CONCRETE SLAB TOPPING TO HAVE WASH AT EDGES OF WALLS AND SPANDRELS TOPPING TO BE THICKENED TO WALLS AND SPANDRELS REFER TO PRECAST SHOP DRAWINGS FOR REBAR DETAIL
- DECORATIVE METAL PANEL REFER TO ARCHITECTURAL ELEVATIONS FOR PATTERN ARRANGEMENT AND COLOUR DISTRIBUTION REFER TO ARCHITECTURAL DETAILS FOR DESIGN DETAILS
- STAR TOWER STAR
- RESERVED
- RESERVED
- BOLLARD WITH FOOTING
- BOLLARD SURFACE MOUNTED
- PERMANENT SNOW CHUTE

**WALL ASSEMBLIES:**

- W-1 300mm CAST-IN-PLACE CONCRETE WALL
- W-2 ALUMINUM PANELS (COLOUR PER ELEVATIONS) 50mm THERMAL INSULATOR CLIPS 25mm AIRSPACE 75mm SPRAY FOAM INSULATION AV BARRIER MEMBRANE 300mm CP CONCRETE
- W-3 90mm ARCHITECTURAL BLOCK 25mm AIRSPACE 75mm SPRAY FOAM INSULATION AV BARRIER MEMBRANE 300mm CP CONCRETE
- W-4 300mm ARCHITECTURAL BLOCK 25mm AIRSPACE 75mm SPRAY FOAM INSULATION AV BARRIER MEMBRANE 300mm CP CONCRETE
- W-5 190mm CONCRETE MASONRY UNITS
- W-6 200mm CAST-IN-PLACE CONCRETE WALL
- W-7 200mm CAST-IN-PLACE CONCRETE WALL
- W-8 90mm ARCHITECTURAL BLOCK 25mm AIRSPACE 75mm SPRAY FOAM INSULATION AV BARRIER MEMBRANE 300mm CP CONCRETE
- W-9 ALUMINUM PANELS (COLOUR PER ELEVATION) 50mm THERMAL INSULATOR CLIPS AV BARRIER MEMBRANE 300mm CP CONCRETE
- W-10 300mm ARCHITECTURAL BLOCK
- W-11 190mm CONCRETE MASONRY UNITS

**FINISH LEGEND:**

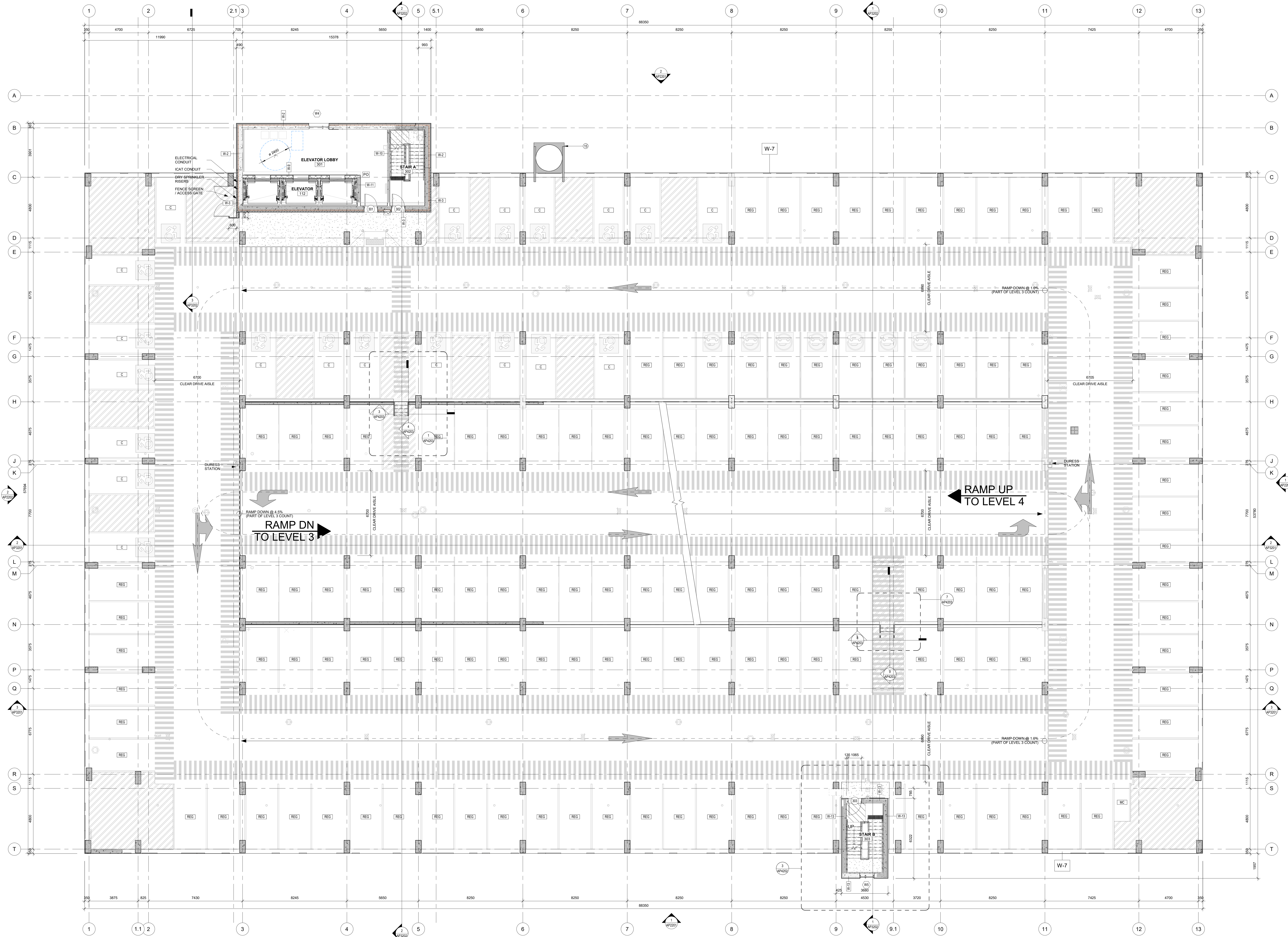
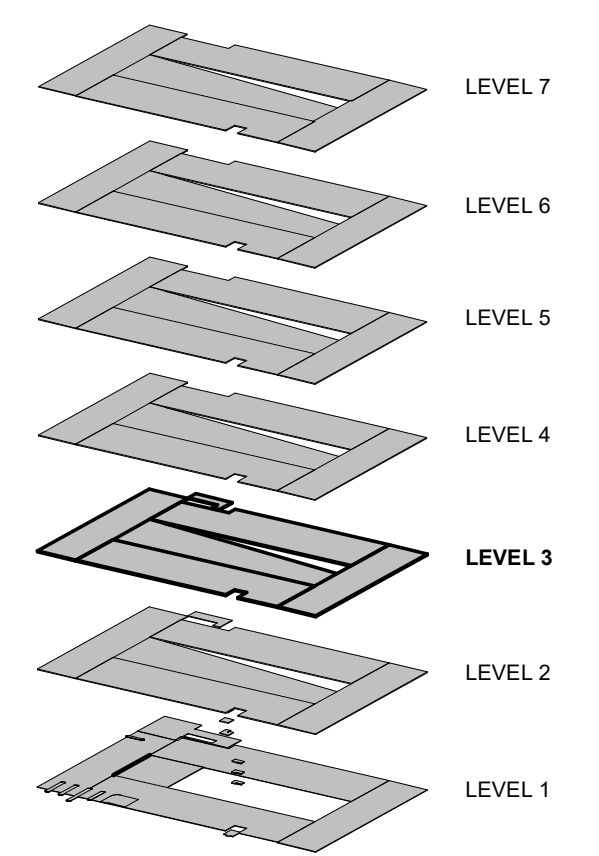
- NOTE: REFER TO FINISH SCHEDULE FOR PRODUCT AND COLOUR SPECIFICATION
- WALL FINISHES**
- W-1 WHITE PAINT
  - W-2 ACCENT PAINT
  - W-3 ACCENT PAINT
  - W-4 ACCENT PAINT
- CEILING FINISHES**
- W-5 RUBBER BASE
- FLOOR FINISHES**
- F-1 TRAFFIC COATING MEMBRANE
  - F-2 SEALED CONCRETE
  - F-3 CERAMIC FLOOR TILE
- CEILING FINISHES**
- C-1 TRAFFIC COATING MEMBRANE
  - C-2 FIRE SPRAY (TBD)
  - C-3 ACOUSTIC CEILING TILE

**DRAWING LEGEND:**

- A B C ACCESSIBLE PARKING
- REG REGULAR PARKING STALL REFER TO 1/AP0401.2/AP0401.3/AP0401
- MC MOTORCYCLE PARKING
- PO ACCESSIBLE ENTRANCE W/ POWER DOOR OPERATOR & ACCESSIBLE PUSH BUTTON
- BOLLARD
- PAINTED TRAFFIC ARROWS
- TACTILE PAVING/FLOORING STRIPS
- STRIPED PEDESTRIAN WALKWAY
- PARKING LINES
- CATCH BASIN
- DURESS STATION

**Parking Schedule - LEVEL 03**

Description	Size	Count
Level 03		
BARRIER FREE - TYPE C	Parking - 2.4m x 5.2m	20
MOTORCYCLE PARKING	Parking - 3m x 1.3m	1
REGULAR PARKING STALL	Parking - 2.6m x 5.2m	135
Level 03, 150		

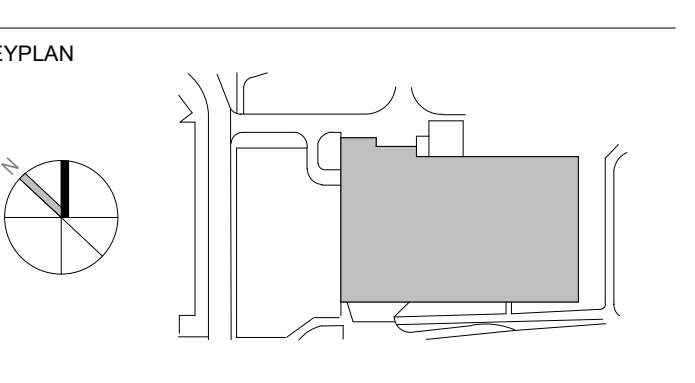


**CHEO**  
1Door4Care

**Infrastructure Ontario**

**EllisDon**  
INFRASTRUCTURE Healthcare

**WALTERFEDY**  
KITCHENER | HAMILTON | TORONTO  
905.881.1378 walterfeddy.com



2 2023-08-16 ISSUED FOR SPIC SUBMISSION  
1 2023-04-01 ISSUED FOR SPIC SUBMISSION  
0 2023-04-01 ISSUED FOR TECHNICAL SUBMISSION  
# DATE REVISION

revisions

ONTARIO ASSOCIATION OF ARCHITECTS  
JASON CHANG  
LICENCE #892

All drawing and specifications are the property of the architect. The contractor shall verify all dimensions and information on site and report any discrepancy to architect before proceeding.

1Door4Care: CHEO Integrated Treatment Centre: Parking Garage

401 Smyth Road, Ottawa ON

LEVEL 3 - OVERALL PLAN

scale: 1 : 100  
drawn by: VP  
reviewed by: JCH/D  
job number: 2021-0801-19  
plot date: 2023-08-16  
drawing number:

City of Ottawa File No. D07-12-22-0170  
City of Ottawa Plan No. 18912

AP1403

1 Level 03  
AP1403 Scale: 1 : 100

2023-08-16 11:16:33 AM C:\pwworkspace\2023-08-01\10\_0\_0\_0\mshd.rvt

**FLOOR PLAN NOTES:**

- 1 CONCRETE COLUMN, YELLOW COLOUR VIA ADDITIVE, SMOOTH FINISH
- 2 CONCRETE SPANDREL, LEVELS 2-7, TAN COLOUR VIA ADDITIVE, SMOOTH SANDBLAST FINISH
- 3 CONCRETE SPANDREL, LEVEL 11, DARK GREY COLOUR, BLOCK FORMLINER FINISH
- 4 RESERVED
- 5 CONCRETE PANEL
- 6 CONCRETE PANEL WITH ALUMINUM PANEL EXTERIOR FINISH
- 7 CONCRETE SLAB ON GRC
- 8 CONCRETE SLAB TOPPING TO HAVE WASH AT EDGES OF WALLS AND SPANDRELS, TOPPING TO BE THINLIZED TO WALLS AND SPANDRELS, REFER TO PRECAST SHOP DRAWINGS FOR 85306 DETAIL
- 9 DECORATIVE METAL PANEL, REFER TO ARCHITECTURAL ELEVATIONS FOR PATTERN, ARRANGEMENT AND COLOUR DISTRIBUTION, REFER TO ARCHITECTURAL DETAILS FOR DESIGN DETAILS
- 10 STAR TOWER STAR
- 11 RESERVED
- 12 RESERVED
- 13 BOLLARD, WITH FOOTING
- 14 BOLLARD, SURFACE MOUNTED
- 15 PERMANENT SNOW CHUTE

**WALL ASSEMBLIES:**

- W1 300mm CAST-IN-PLACE CONCRETE WALL
- W2 ALUMINUM PANELS (COLOUR PER ELEVATIONS) 50mm THERMAL INSULATOR CLIPS 25mm AIRSPACE 75mm SPRAY FOAM INSULATION AV BARRIER MEMBRANE 300mm CP CONCRETE
- W3 90mm ARCHITECTURAL BLOCK 25mm AIRSPACE 75mm SPRAY FOAM INSULATION AV BARRIER MEMBRANE 300mm CP CONCRETE
- W4 300mm ARCHITECTURAL BLOCK 25mm AIRSPACE 75mm SPRAY FOAM INSULATION AV BARRIER MEMBRANE 300mm CP CONCRETE
- W5 190mm CONCRETE MASONRY UNITS
- W6 200mm CAST-IN-PLACE CONCRETE WALL
- W7 200mm CAST-IN-PLACE CONCRETE WALL
- W8 90mm ARCHITECTURAL BLOCK 25mm AIRSPACE 75mm SPRAY FOAM INSULATION AV BARRIER MEMBRANE 300mm CP CONCRETE
- W9 ALUMINUM PANELS (COLOUR PER ELEVATION) 50mm THERMAL INSULATOR CLIPS AV BARRIER MEMBRANE 300mm CP CONCRETE
- W10 300mm ARCHITECTURAL BLOCK
- W11 190mm CONCRETE MASONRY UNITS

**FINISH LEGEND:**

- NOTE: REFER TO FINISH SCHEDULE FOR PRODUCT AND COLOUR SPECIFICATION.
- WALL FINISHES**
- W1 WHITE PAINT
  - W2 ACCENT PAINT
  - W3 ACCENT PAINT
  - W4 ACCENT PAINT
- CEILING FINISHES**
- W5 RUBBER BASE

**FLOOR FINISHES**

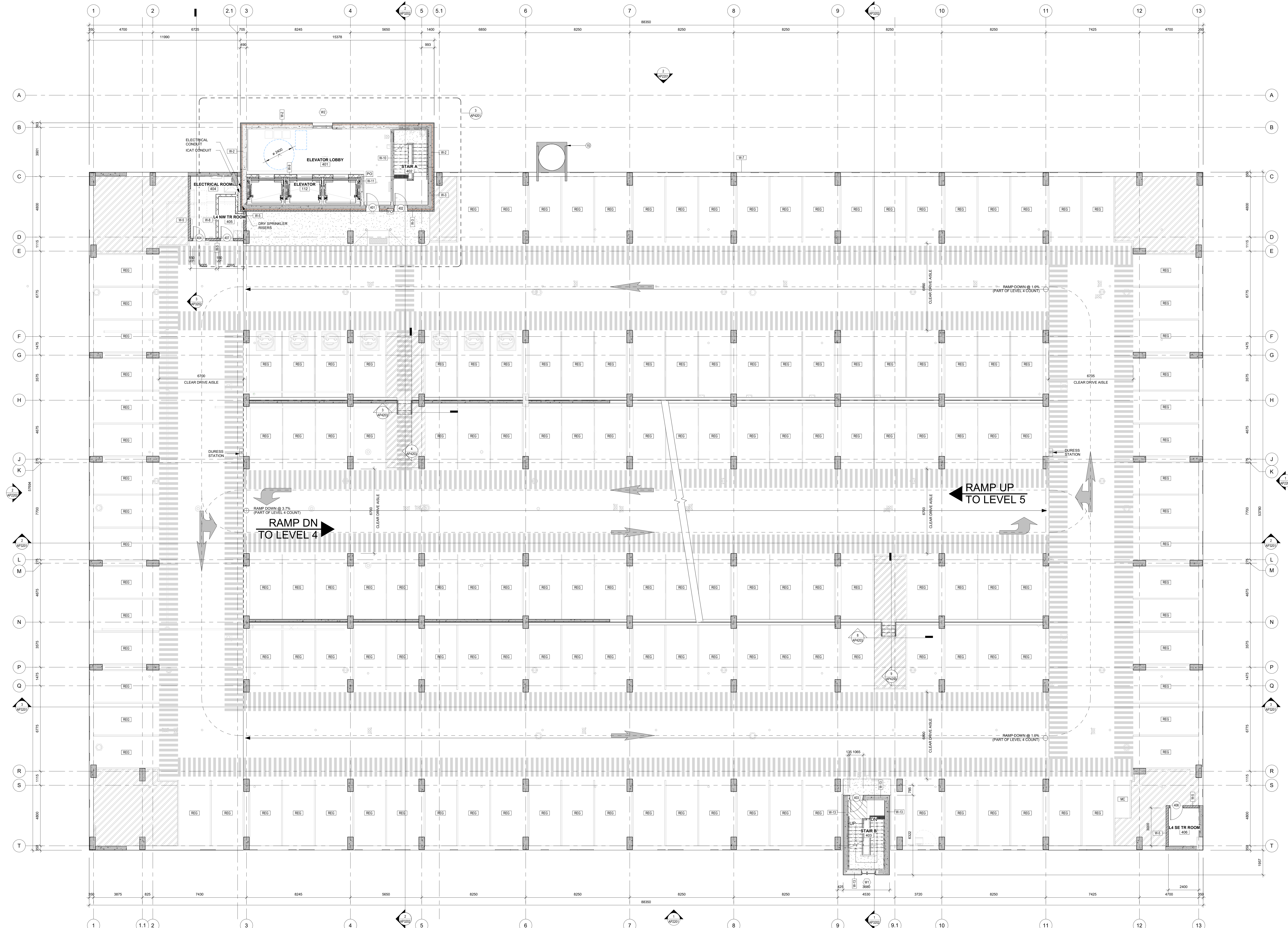
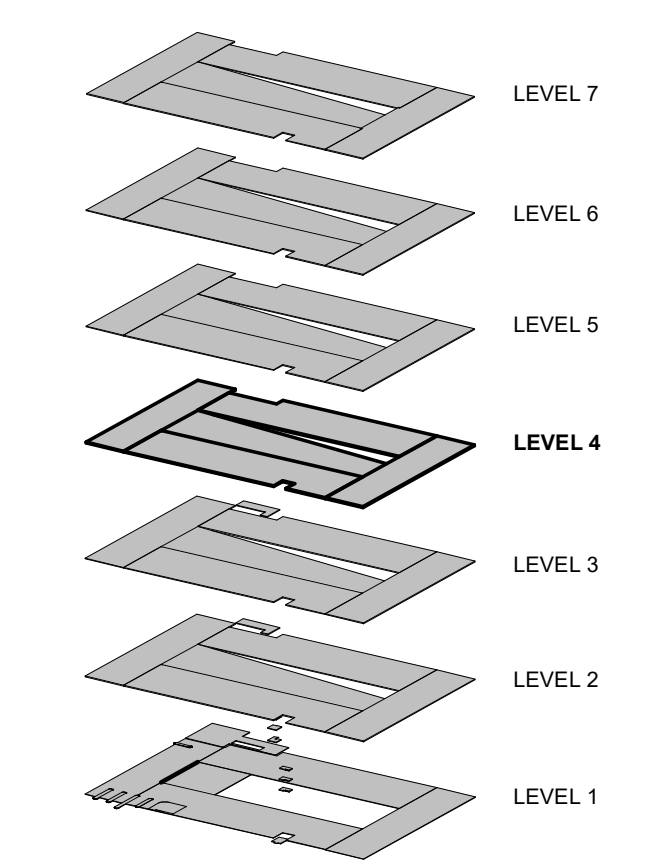
- F1 TRAFFIC COATING MEMBRANE
- F2 SEALED CONCRETE
- F3 CERAMIC FLOOR TILE
- F4 TRAFFIC COATING MEMBRANE
- F5 FIRE SPRAY (TBD)
- F6 ACOUSTIC CEILING TILE

**DRAWING LEGEND:**

- A B C ACCESSIBLE PARKING
- REG REGULAR PARKING STALL, REFER TO 1/AP1401.2/AP1401.3/AP1401.4
- MC MOTORCYCLE PARKING
- PO ACCESSIBLE ENTRANCE W/ POWER DOOR OPERATOR & ACCESSIBLE PUSH BUTTON
- BOLLARD
- PAINTED TRAFFIC ARROWS
- TACTILE PAVING/FLOORING STRIPS
- STRIPED PEDESTRIAN WALKWAY
- PARKING LINES
- CATCH BASIN
- DURESS STATION

**Parking Schedule - LEVEL 04**

Description	Size	Count
Level 04 MOTORCYCLE PARKING	Parking - 3m x 1.3m	1
REGULAR PARKING STALL	Parking - 2.6m x 5.2m	162
Level 04 MC		

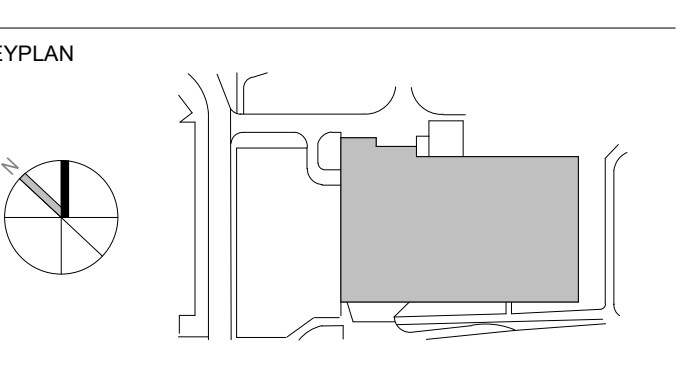


**CHEO**  
1Door4Care

**Infrastructure Ontario**

**EllisDon**  
INFRASTRUCTURE Healthcare

**WALTERFEDY**  
KITCHENER | HAMILTON | TORONTO  
905.885.1378 walterfedycan.com



2 2023-08-16 ISSUED FOR SPIC SUBMISSION  
1 2023-04-01 ISSUED FOR PDC SUBMISSION  
0 2023-04-01 ISSUED FOR TECHNICAL SUBMISSION

DATE: \_\_\_\_\_ REVISION: \_\_\_\_\_

revisions

ONTARIO ASSOCIATION OF ARCHITECTS  
JASON CHANG  
LICENCE #892

All drawing and specifications are the property of the architect. The contractor shall verify all dimensions and information on site and report any discrepancy to architect before proceeding.

1Door4Care: CHEO Integrated Treatment Centre: Parking Garage

401 Smyth Road, Ottawa ON

LEVEL 4 - OVERALL PLAN

scale: 1 : 100  
drawn by: JCV/JVD  
reviewed by: JCV/JVD  
job number: 2021-0801-19  
plot date: 2023-08-16  
drawing number:

City of Ottawa File No. D07-12-22-0170  
City of Ottawa Plan No. 18912

AP1404

2023-08-16 11:19:42 PM C:\pwworking\AP1404\_2021-0801-19\04\_Overall.rvt

1 Level 04  
AP1404 Scale: 1 : 100

**FLOOR PLAN NOTES:**

- 1 CONCRETE COLUMN, YELLOW COLOUR VIA ADDITIVE, SMOOTH FINISH
- 2 CONCRETE SPANDREL (LEVELS 2-7), TAN COLOUR VIA ADDITIVE, SMOOTH SANDBLAST FINISH
- 3 CONCRETE SPANDREL (LEVEL 1), DARK GREY COLOUR, BLOCK FORMLINER FINISH
- 4 RESERVED
- 5 CONCRETE PANEL
- 6 CONCRETE PANEL WITH ALUMINUM PANEL EXTERIOR FINISH
- 7 CONCRETE SLAB ON GRC
- 8 CONCRETE SLAB TOPPING TO HAVE WASH AT EDGES OF WALLS AND SPANDRELS. TOPPING TO BE THICKENED TO WALLS AND SPANDRELS. REFER TO PRECAST SHOP DRAWINGS FOR 85306 DETAIL
- 9 DECORATIVE METAL PANEL. REFER TO ARCHITECTURAL ELEVATIONS FOR PATTERN, ARRANGEMENT AND COLOUR DISTRIBUTION. REFER TO ARCHITECTURAL DETAILS FOR DESIGN DETAILS
- 10 STAR TOWER STAR
- 11 RESERVED
- 12 RESERVED
- 13 BOLLARD, WITH FOOTING
- 14 BOLLARD, SURFACE MOUNTED
- 15 PERMANENT SNOW CHUTE

**WALL ASSEMBLIES:**

- W1 300mm CAST-IN-PLACE CONCRETE WALL
- W2 ALUMINUM PANELS (COLOUR PER ELEVATIONS) 25mm THERMAL INSULATOR CLIPS 25mm AIRSPACE 75mm SPRAY FOAM INSULATION AV BARRIER MEMBRANE 300mm CP CONCRETE
- W3 90mm ARCHITECTURAL BLOCK 25mm AIRSPACE 75mm SPRAY FOAM INSULATION AV BARRIER MEMBRANE 300mm CP CONCRETE
- W4 200mm ARCHITECTURAL BLOCK 25mm AIRSPACE 75mm SPRAY FOAM INSULATION AV BARRIER MEMBRANE 300mm CP CONCRETE
- W5 300mm ARCHITECTURAL BLOCK 25mm AIRSPACE 75mm SPRAY FOAM INSULATION AV BARRIER MEMBRANE 300mm CP CONCRETE
- W6 200mm ARCHITECTURAL BLOCK 25mm AIRSPACE 75mm SPRAY FOAM INSULATION AV BARRIER MEMBRANE 300mm CP CONCRETE
- W7 190mm CONCRETE MASONRY UNITS

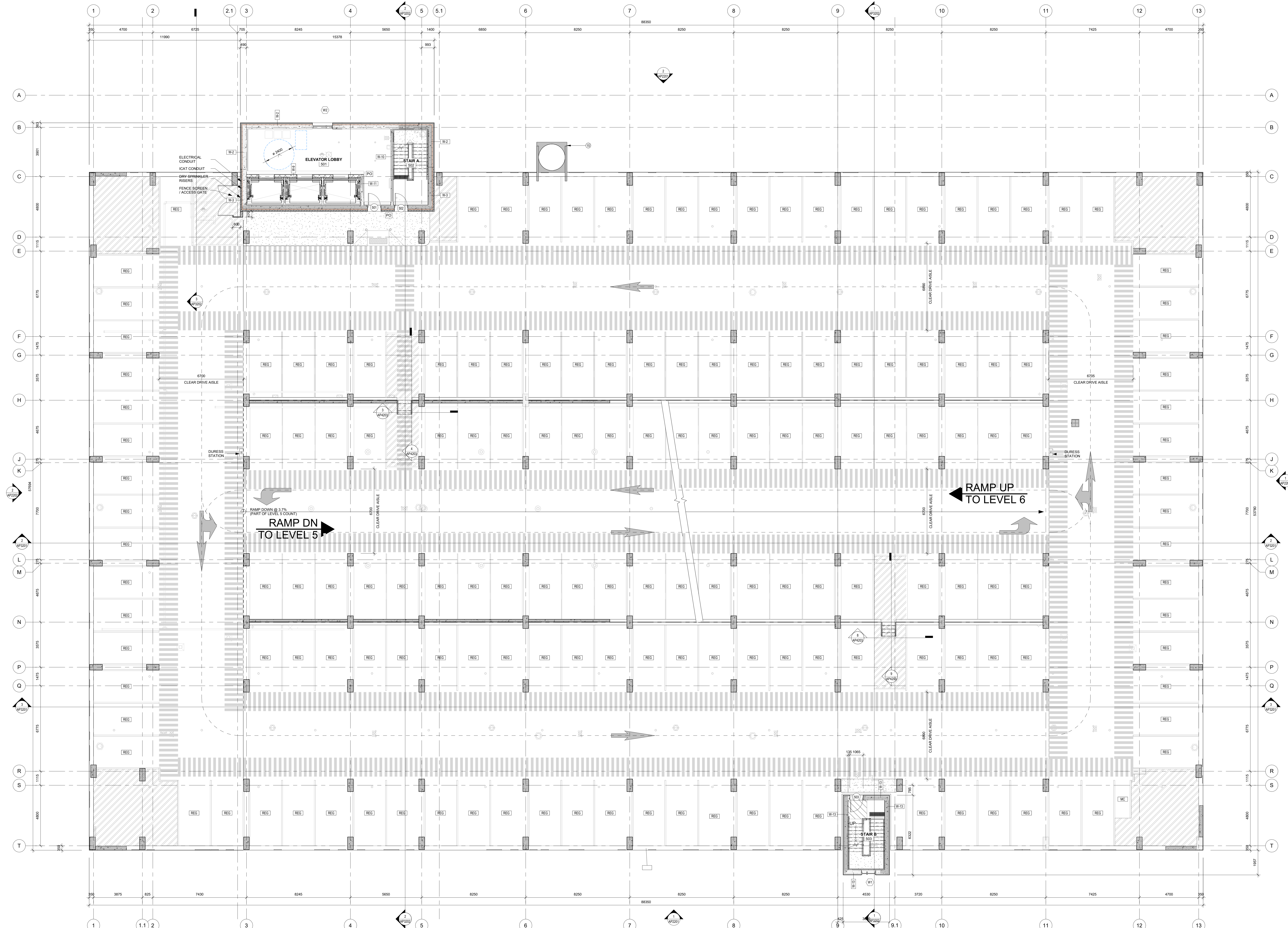
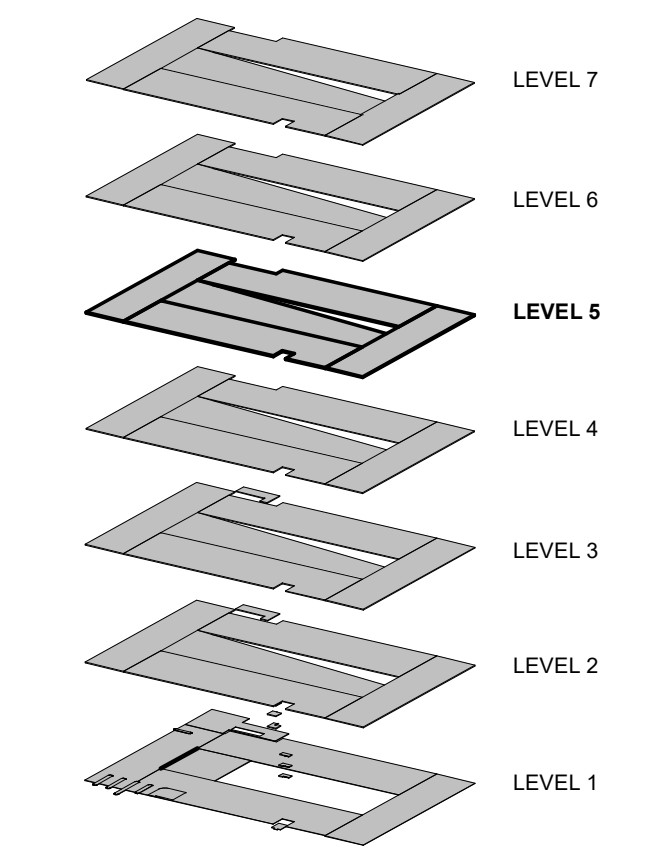
**FINISH LEGEND:**

- NOTE: REFER TO FINISH SCHEDULE FOR PRODUCT AND COLOUR SPECIFICATION.
- WALL FINISHES:**
- W1 WHITE PAINT
  - W2 ACCENT PAINT
  - W3 ACCENT PAINT
  - W4 ACCENT PAINT
- CEILING FINISHES:**
- CE1 RUBBER BASE
- FLOOR FINISHES:**
- F1 TRAFFIC COATING MEMBRANE
  - F2 SEALED CONCRETE
  - F3 CERAMIC FLOOR TILE
- CEILING FINISHES:**
- CE2 TRAFFIC COATING MEMBRANE
  - CE3 FIRE SPRAY (TBD)
  - CE4 ACOUSTIC CEILING TILE

**DRAWING LEGEND:**

- A B C ACCESSIBLE PARKING
- REG REGULAR PARKING STALL. REFER TO 1/AP0401.2/AP0401.3/AP0401
- MC MOTORCYCLE PARKING
- PD ACCESSIBLE ENTRANCE W/ POWER DOOR OPERATOR & ACCESSIBLE PUSH BUTTON
- BOLLARD
- PAINTED TRAFFIC ARROWS
- TACTILE PAVING/FLOORING STRIPS
- STRIPED PEDESTRIAN WALKWAY
- PARKING LINES
- CATCH BASIN
- DURESS STATION

Parking Schedule - LEVEL 05		
Description	Size	Count
Level 05 MOTORCYCLE PARKING	Parking - 3m x 1.3m	1
REGULAR PARKING STALL	Parking - 2.2m x 5.2m	163
Level 05: 164		

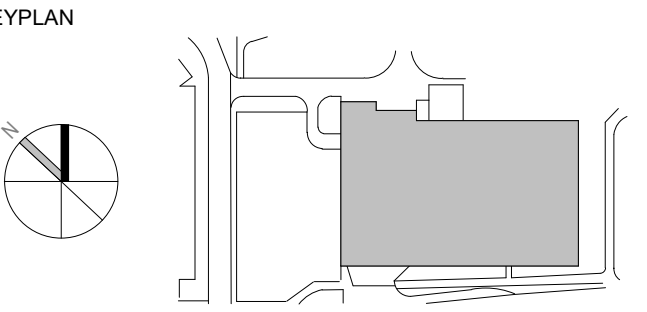


**CHEO**  
1Door4Care

**Infrastructure Ontario**

**EllisDon**  
INFRASTRUCTURE Healthcare

**WALTERFEDY**  
KITCHENER | HAMILTON | TORONTO  
905.885.1378 walterfedy.com



2 2023-08-16 ISSUED FOR SPIC SUBMISSION  
1 2023-04-01 ISSUED FOR P101-20 SUBMISSION  
0 2023-04-01 ISSUED FOR TECHNICAL SUBMISSION

DATE: REVISION:

revisions

ONTARIO ASSOCIATION OF ARCHITECTS  
JASON CHANG  
LICENCE 8932

All drawing and specifications are the property of the architect. The contractor shall verify all dimensions and information on site and report any discrepancy to architect before proceeding.

1Door4Care: CHEO Integrated Treatment Centre: Parking Garage

401 Smyth Road, Ottawa ON

LEVEL 5 - OVERALL PLAN

Scale: 1:100  
drawn by: JCU/VD  
reviewed by: JCU/VD  
job number: 2021-0801-19  
plot date: 2023-08-16  
drawing number:

City of Ottawa File No. D07-12-22-0170  
City of Ottawa Plan No. 18912

AP1405

2023-08-16 11:19:48 PM C:\pwworking\2023-08-16\10\_0\_0\_0\_0\_0\_0.dwg

1 Level 05  
AP1405 Scale: 1:100

**FLOOR PLAN NOTES**

- 1 CONCRETE COLUMN YELLOW COLOUR VIA ADDITIVE SMOOTH FINISH
- 2 CONCRETE SPANDREL (LEVELS 2-7) TAN COLOUR VIA ADDITIVE SMOOTH SANDBLAST FINISH
- 3 CONCRETE SPANDREL (LEVEL 1) DARK GREY COLOUR BLOCK FORMLINER FINISH
- 4 RESERVED
- 5 CONCRETE PANEL
- 6 CONCRETE PANEL WITH ALUMINUM PANEL EXTERIOR FINISH
- 7 CONCRETE SLAB ON GRADE
- 8 CONCRETE SLAB TOPPING TO HAVE WASH AT EDGES OF WALLS AND SPANDRELS TOPPING TO BE FINISHED TO WALLS AND SPANDRELS REFER TO PRECAST SHOP DRAWINGS FOR FINISH DETAIL
- 9 DECORATIVE METAL PANEL REFER TO ARCHITECTURAL ELEVATIONS FOR PATTERN ARRANGEMENT AND COLOUR DISTRIBUTION REFER TO ARCHITECTURAL DETAILS FOR DESIGN DETAILS
- 10 STAR TOWER STAR
- 11 RESERVED
- 12 RESERVED
- 13 BOLLARD WITH FOOTING
- 14 BOLLARD SURFACE MOUNTED
- 15 PERMANENT SNOW CHUTE

**WALL ASSEMBLIES:**

- W1 300mm CAST-IN-PLACE CONCRETE WALL
- W2 ALUMINUM PANELS (COLOUR PER ELEVATIONS) 25mm THERMAL INSULATOR CLIPS 25mm AIRSPACE 75mm SPRAY FOAM INSULATION AV BARRIER MEMBRANE 300mm CP CONCRETE
- W3 90mm ARCHITECTURAL BLOCK 25mm AIRSPACE 75mm SPRAY FOAM INSULATION AV BARRIER MEMBRANE 300mm CP CONCRETE
- W4 200mm ARCHITECTURAL BLOCK 25mm AIRSPACE 75mm SPRAY FOAM INSULATION AV BARRIER MEMBRANE 300mm CP CONCRETE
- W5 300mm ARCHITECTURAL BLOCK 25mm AIRSPACE 75mm SPRAY FOAM INSULATION AV BARRIER MEMBRANE 300mm CP CONCRETE
- W6 200mm ARCHITECTURAL BLOCK 25mm AIRSPACE 75mm SPRAY FOAM INSULATION AV BARRIER MEMBRANE 300mm CP CONCRETE
- W7 190mm CONCRETE MASONRY UNITS

**FINISH LEGEND:**

- NOTE: REFER TO FINISH SCHEDULE FOR PRODUCT AND COLOUR SPECIFICATION
- WALL FINISHES**
- W1 WHITE PAINT
  - W2 ACCENT PAINT
  - W3 ACCENT PAINT
  - W4 ACCENT PAINT
- CEILING FINISHES**
- W5 RUBBER BASE

**FLOOR FINISHES**

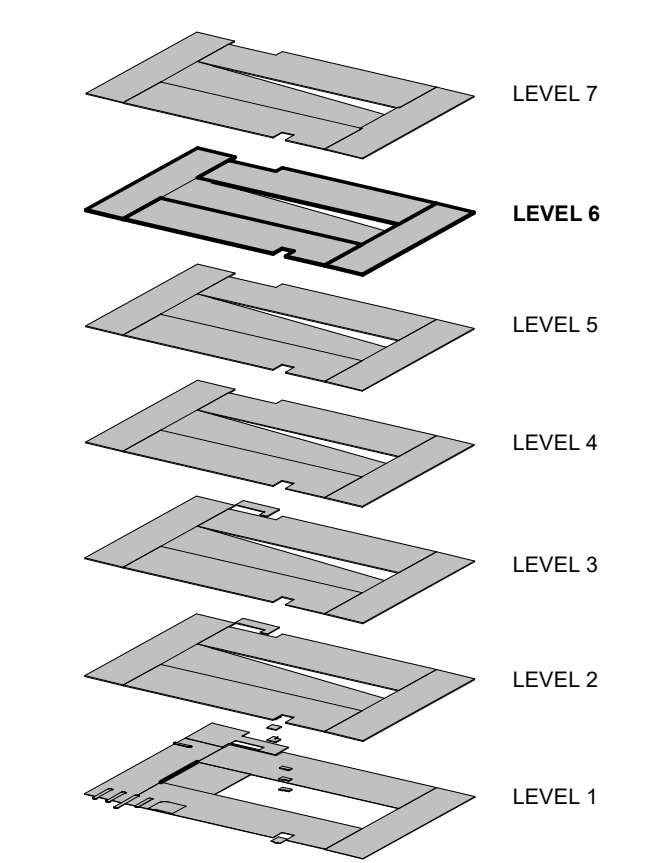
- F1 TRAFFIC COATING MEMBRANE
- F2 SEALED CONCRETE
- F3 CERAMIC FLOOR TILE
- F4 TRAFFIC COATING MEMBRANE
- F5 FIRE SPRAY (TBO)
- F6 ACOUSTIC CEILING TILE

**DRAWING LEGEND:**

- A B C ACCESSIBLE PARKING
- REG REGULAR PARKING STALL REFER TO 1/AP0401.2/AP0401.3/AP0401
- MC MOTORCYCLE PARKING
- PO ACCESSIBLE ENTRANCE W/ POWER DOOR OPERATOR & ACCESSIBLE PUSH BUTTON
- BOLLARD
- PAINTED TRAFFIC ARROWS
- TACTILE PAVING/FLOORING STRIPS
- STRIPE PEDESTRIAN WALKWAY
- PARKING LINES
- CATCH BASIN
- DURESS STATION

**Parking Schedule - LEVEL 06**

Description	Size	Count
Level 06		
MOTORCYCLE PARKING	Parking - 3m x 1.3m	1
REGULAR PARKING STALL	Parking - 2.6m x 5.2m	163
Level 06: 164		

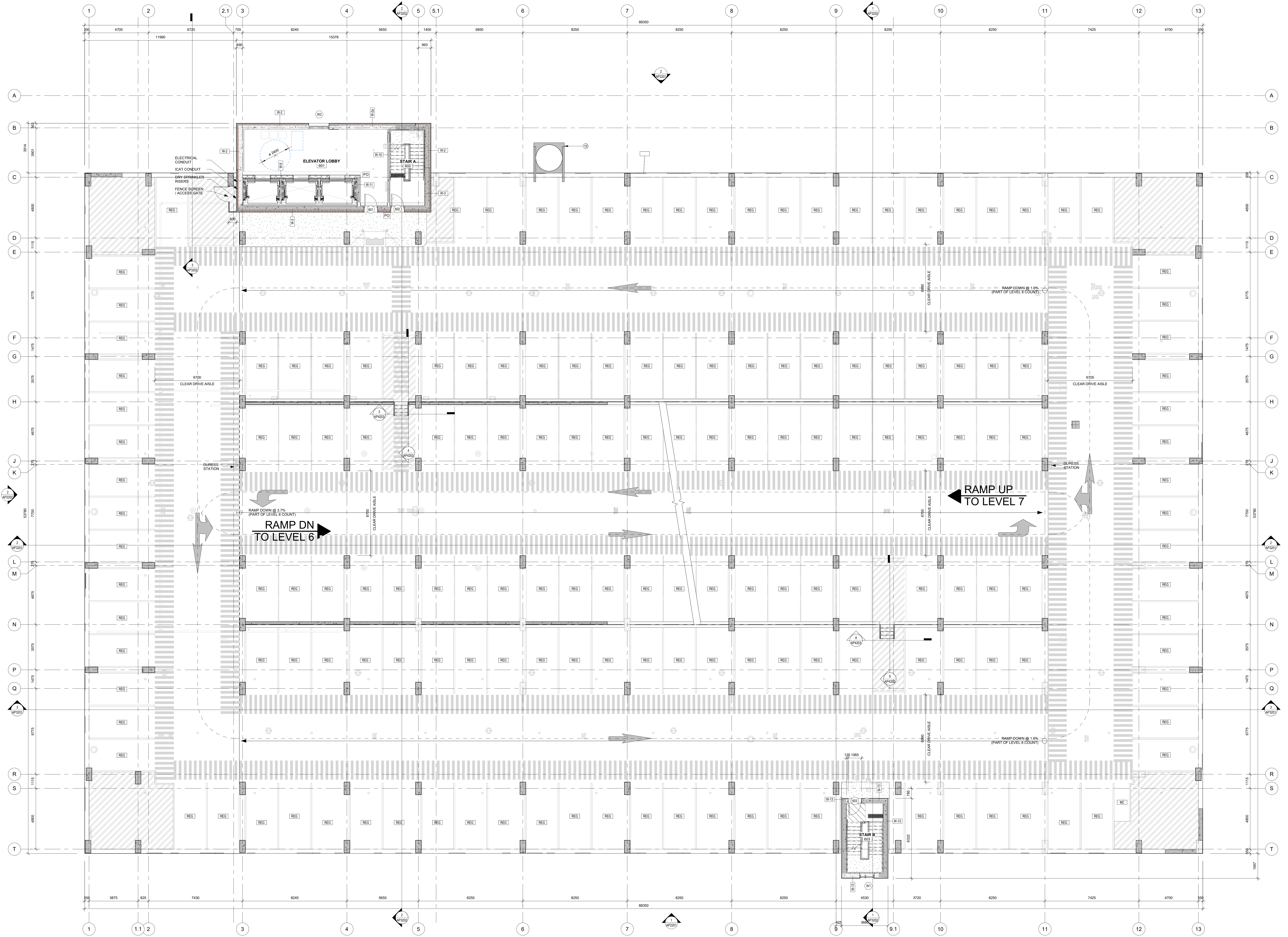
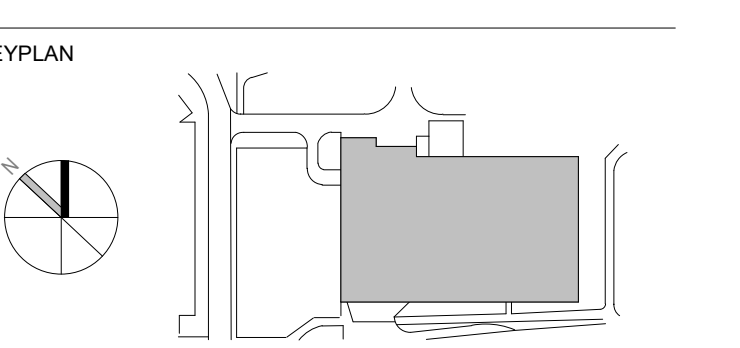


**CHEO**  
1Door4Care

**Infrastructure Ontario**

**EllisDon**  
INFRASTRUCTURE Healthcare

**WALTER FEDY**  
KITCHENER | HAMILTON | TORONTO  
905.885.1378 walterfedy.com



2 2023-08-16 ISSUED FOR SPC SUBMISSION  
1 2023-04-21 ISSUED FOR SPC SUBMISSION  
0 2023-04-21 ISSUED FOR TECHNICAL SUBMISSION

DATE: 2023-08-16

revisions

ONTARIO ASSOCIATION OF ARCHITECTS  
JASON CHANG  
LICENCE #892

All drawing and specifications are the property of the architect. The contractor shall verify all dimensions and information on site and report any discrepancy to architect before proceeding.

1Door4Care: CHEO Integrated Treatment Centre: Parking Garage

401 Smyth Road, Ottawa ON

LEVEL 6 - OVERALL PLAN

scale: 1 : 100  
drawn by: JCV/VP  
reviewed by: JCV/VP  
job number: 2021-0801-19  
plot date: 2023-08-16  
drawing number:

City of Ottawa File No. D07-12-22-0170  
City of Ottawa Plan No. 18912

AP1406

2023-08-16 11:16:43 PM C:\temp\p0401\2023\_08\_16\_11\_16\_43\_00\_00.dwg

1 Level 06  
AP1406 Scale: 1 : 100

**FLOOR PLAN NOTES:**

- 1 CONCRETE COLUMN YELLOW COLOUR VIA ADDITIVE SMOOTH FINISH
- 2 CONCRETE SPANDREL LEVELS 2-7 TAN COLOUR VIA ADDITIVE SMOOTH SANDBLAST FINISH
- 3 CONCRETE SPANDREL LEVEL 11 DARK GREY COLOUR BLOCK FORMLINER FINISH
- 4 RESERVED
- 5 CONCRETE PANEL
- 6 CONCRETE PANEL WITH ALUMINUM PANEL EXTERIOR FINISH
- 7 CONCRETE SLAB ON GRC
- 8 CONCRETE SLAB TOPPING TO HAVE WASH AT EDGES OF WALLS AND SPANDRELS TOPPING TO BE PLACED TO WALLS AND SPANDRELS REFER TO PRECAST SHOP DRAWINGS FOR FINISH DETAIL
- 9 DECORATIVE METAL PANEL REFER TO ARCHITECTURAL ELEVATIONS FOR PATTERN ARRANGEMENT AND COLOUR DISTRIBUTION REFER TO ARCHITECTURAL DETAILS FOR DESIGN DETAILS
- 10 STAR TOWER STAR
- 11 RESERVED
- 12 RESERVED
- 13 BOLLARD WITH FOOTING
- 14 BOLLARD SURFACE MOUNTED
- 15 PERMANENT SNOW CHUTE

**WALL ASSEMBLIES:**

- |      |  |      |  |
|------|--|------|--|
| W-1  | 300mm CAST-IN-PLACE CONCRETE WALL  | W-11 | 300mm CAST-IN-PLACE CONCRETE PERIMETER STRUCTURAL SPANDREL 1200 AFF TYP                                  |
| W-2  | ALUMINUM PANELS (COLOUR PER ELEVATIONS) 90mm THERMAL ISOLATOR CLIPS 25mm AIRSPACE 75mm SPRAY FOAM INSULATION AV BARRIER MEMBRANE 300mm CP CONCRETE | W-12 | 190mm CONCRETE MASONRY UNITS   |
| W-3  | 90mm ARCHITECTURAL BLOCK 25mm AIRSPACE 75mm SPRAY FOAM INSULATION AV BARRIER MEMBRANE 300mm CP CONCRETE  | W-13 | 240mm CONCRETE MASONRY UNITS   |
| W-4  | 90mm ARCHITECTURAL BLOCK 25mm AIRSPACE 75mm SPRAY FOAM INSULATION AV BARRIER MEMBRANE 300mm CP CONCRETE  | W-14 | 200mm CAST-IN-PLACE CONCRETE WALL  |
| W-5  | 90mm ARCHITECTURAL BLOCK 25mm AIRSPACE 75mm SPRAY FOAM INSULATION AV BARRIER MEMBRANE 300mm CP CONCRETE  | W-15 | 200mm CAST-IN-PLACE CONCRETE WALL  |
| W-6  | 90mm ARCHITECTURAL BLOCK 25mm AIRSPACE 75mm SPRAY FOAM INSULATION AV BARRIER MEMBRANE 300mm CP CONCRETE  | W-16 | 300mm ARCHITECTURAL BLOCK 25mm AIRSPACE 20mm AIRSPACE AV BARRIER MEMBRANE 300mm CP CONCRETE              |
| W-7  | 200mm ARCHITECTURAL BLOCK  | W-17 | ALUMINUM PANELS (COLOUR PER ELEVATION) 90mm THERMAL ISOLATOR CLIPS AV BARRIER MEMBRANE 300mm CP CONCRETE |
| W-8  | 190mm CONCRETE MASONRY UNITS   | W-18 | 300mm ARCHITECTURAL BLOCK  |
| W-9  | 190mm CONCRETE MASONRY UNITS   | W-19 | 300mm ARCHITECTURAL BLOCK  |
| W-10 | 190mm CONCRETE MASONRY UNITS   | W-20 | 300mm ARCHITECTURAL BLOCK  |

**FINISH LEGEND:**

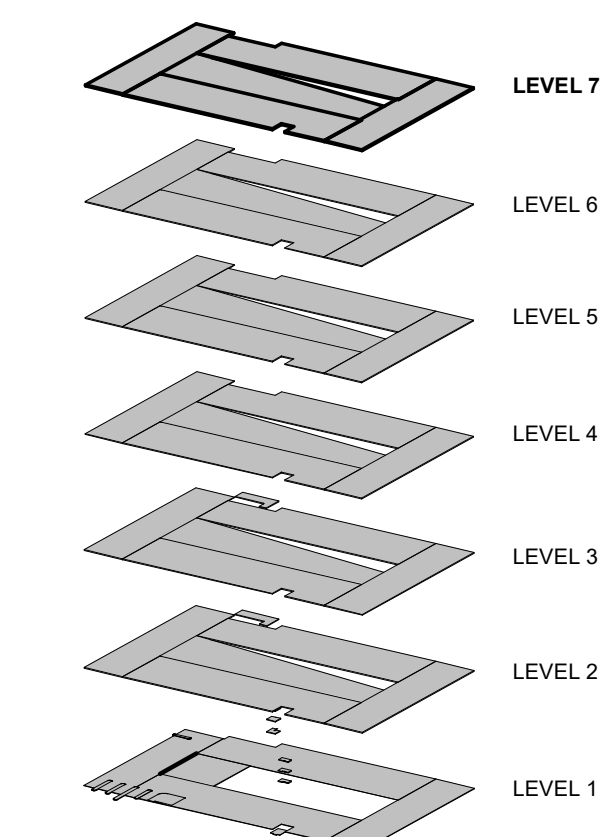
- NOTE: REFER TO FINISH SCHEDULE FOR PRODUCT AND COLOUR SPECIFICATION
- |                         |                              |
|-------------------------|------------------------------|
| <b>WALL FINISHES</b>    | <b>FLOOR FINISHES</b>        |
| W-1 WHITE PAINT         | F-1 TRAFFIC COATING MEMBRANE |
| W-2 ACCENT PAINT        | F-2 SEALED CONCRETE          |
| W-3 ACCENT PAINT        | F-3 CERAMIC FLOOR TILE       |
| W-4 ACCENT PAINT        |                              |
| <b>CEILING FINISHES</b> | <b>CEILING FINISHES</b>      |
| C-1 RUBBER BASE         | C-2 TRAFFIC COATING MEMBRANE |
|                         | C-3 FIRE SPRAY (TBD)         |
|                         | C-4 ACOUSTIC CEILING TILE    |

**DRAWING LEGEND:**

- |                          |   |                      |  |         |                        |                                |                |
|--------------------------|---|----------------------|--|---------|------------------------|--------------------------------|----------------|
| A B C ACCESSIBLE PARKING | REG REGULAR PARKING STALL REFER TO 1/AP0401.2/AP0401.3/AP0401 | MC MOTOCYCLE PARKING | PD ACCESSIBLE ENTRANCE W/ POWER DOOR OPERATOR & ACCESSIBLE PUSH BUTTON | ROLLERO | PAINTED TRAFFIC ARROWS | TACTILE PAVING/FLOORING STRIPS | CATCH BASIN    |
|                          |   |                      |  |         |                        | STRIPED PEDESTRIAN WALKWAY     | DURESS STATION |
|                          |   |                      |  |         |                        |                                |                |
|                          |   |                      |  |         |                        |                                |                |

**Parking Schedule - LEVEL 07**

Description	Size	Count
Level 07 REGULAR PARKING STALL	Parking - 2.6m x 5.2m	163
Level 07 163		

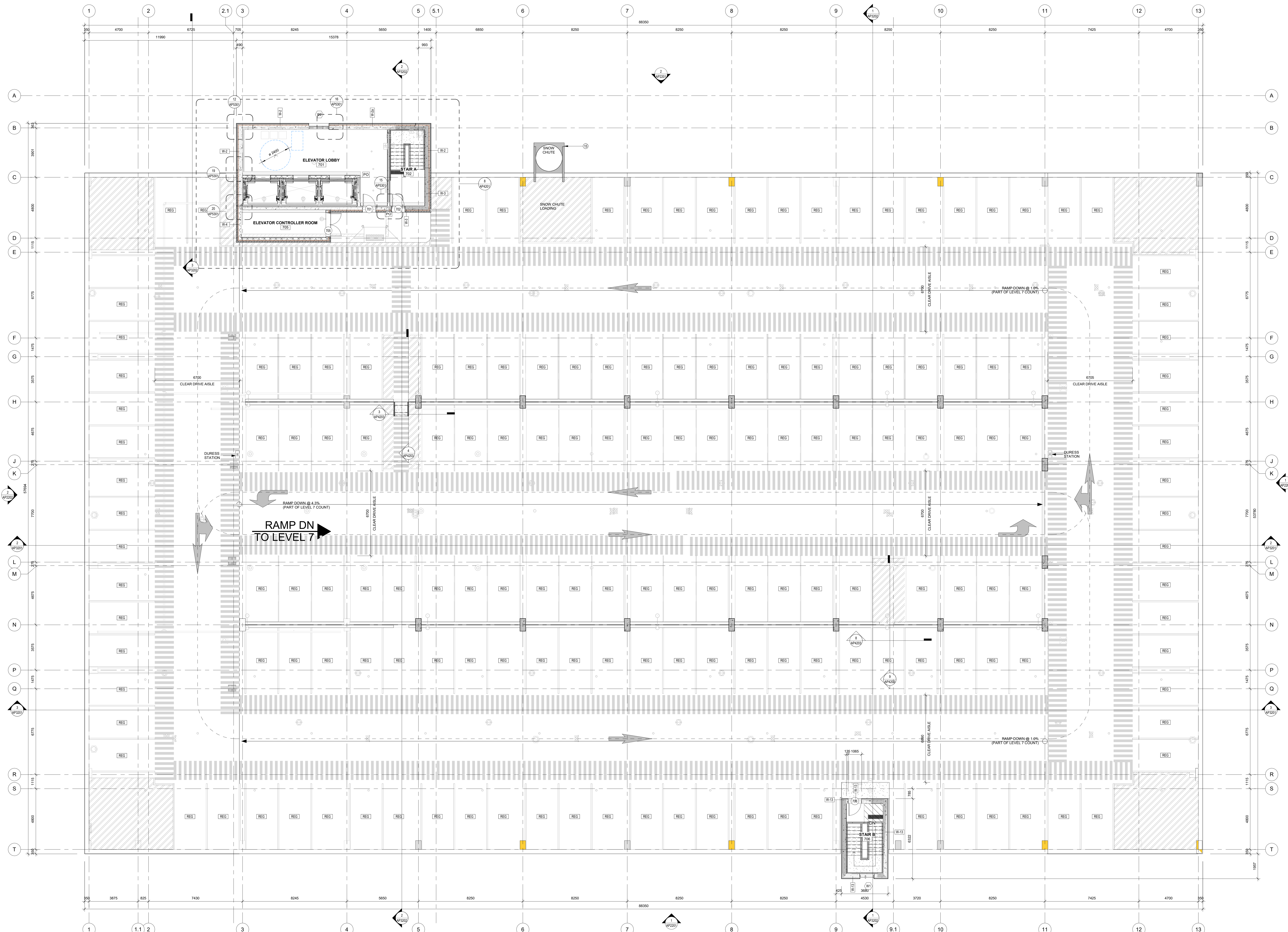
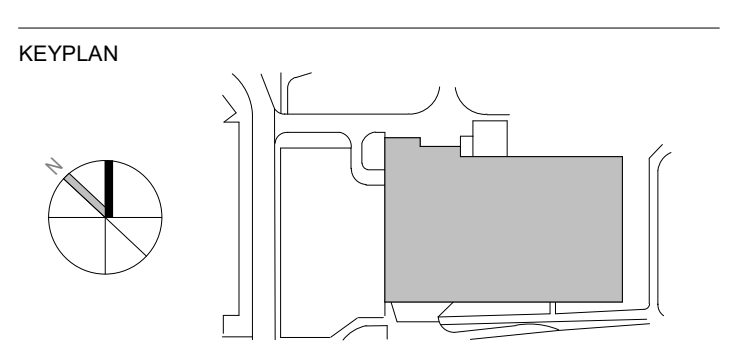


**CHEO**  
1Door4Care

**Infrastructure Ontario**

**EllisDon**  
INFRASTRUCTURE Healthcare

**WALTERFEDY**  
KITCHENER | HAMILTON | TORONTO  
905.885.1376 walterfedycan.com



2 2023-08-16 ISSUED FOR SPIC SUBMISSION  
1 2023-04-31 ISSUED FOR POC SUBMISSION  
0 2023-04-31 ISSUED FOR TECHNICAL SUBMISSION

DATE: revision:

revisions:

ONTARIO ASSOCIATION OF ARCHITECTS  
JASON CHANG  
LICENCE 8892

All drawing and specifications are the property of the architect. The contractor shall verify all dimensions and information on site and report any discrepancy to architect before proceeding.

**1Door4Care: CHEO Integrated Treatment Centre: Parking Garage**

401 Smyth Road, Ottawa ON

**LEVEL 7 - OVERALL PLAN**

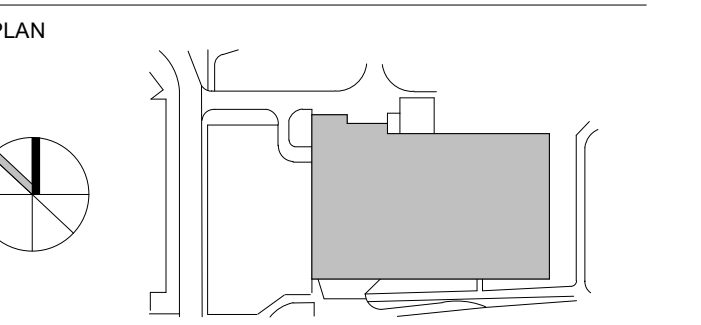
scale: 1:100  
drawn by: JCV/D  
reviewed by: JCV/D  
job number: 2021-0801-19  
plot date: 2023-08-16  
drawing number: AP1407

City of Ottawa File No. D07-12-22-0170  
City of Ottawa Plan No. 18912

2023-08-16 11:16:53 PM C:\pwworkspace\2023-08-16\10\_0\_0\_walterfedy

**1 LEVEL 07**  
AP1407 Scale: 1:100





REFER TO ARCHITECTURAL SHEET AP2202 FOR TYPICAL ELEVATION MATERIAL NOTES

1 SOUTH ELEVATION  
Scale: 1:100



REFER TO ARCHITECTURAL SHEET AP2202 FOR TYPICAL ELEVATION MATERIAL NOTES

2 NORTH ELEVATION  
Scale: 1:100

2	2023-08-16	ISSUED FOR SPK SUBMISSION	REVISION
1	2023-04-30	ISSUED FOR PDR SUBMISSION	
0	2023-04-20	ISSUED FOR TECHNICAL SUBMISSION	
#	DATE	REVISION	REVISION



All drawings and specifications are the property of the architect. The contractor shall verify all dimensions and information on site and report any discrepancy to architect before proceeding.

1Door4Care: CHEO Integrated Treatment Centre: Parking Garage

401 Smyth Road, Ottawa ON

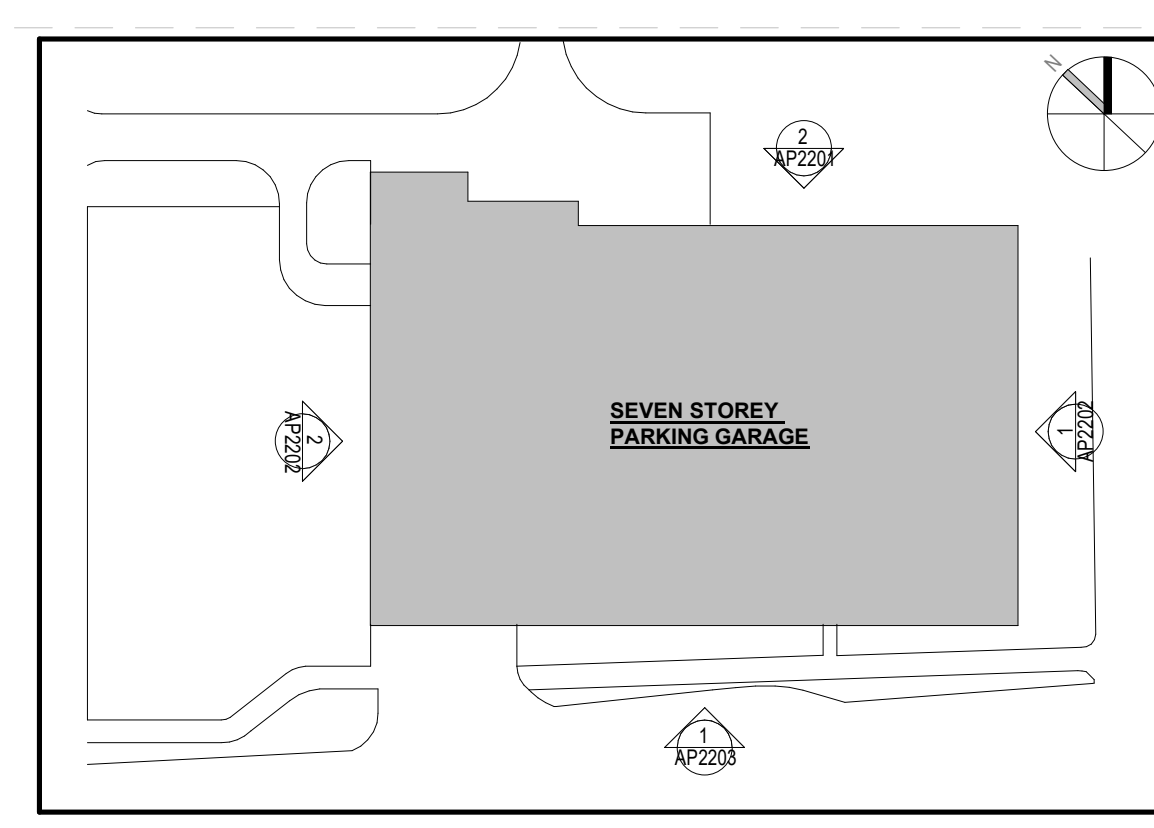
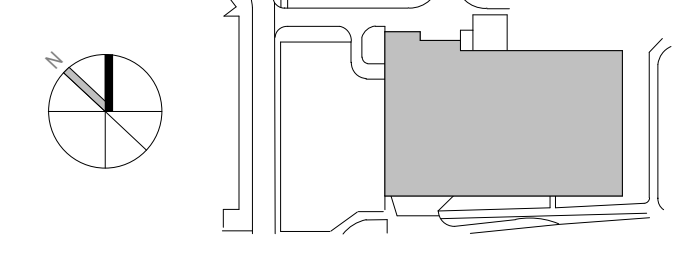
BUILDING ELEVATIONS

scale:	1:100
drawn by:	VP
reviewed by:	JCU/DV
job number:	2021-0801-19
plot date:	2023-08-16

drawing number:  
AP2201

City of Ottawa File No. D07-12-22-0170  
City of Ottawa Plan No. 18912

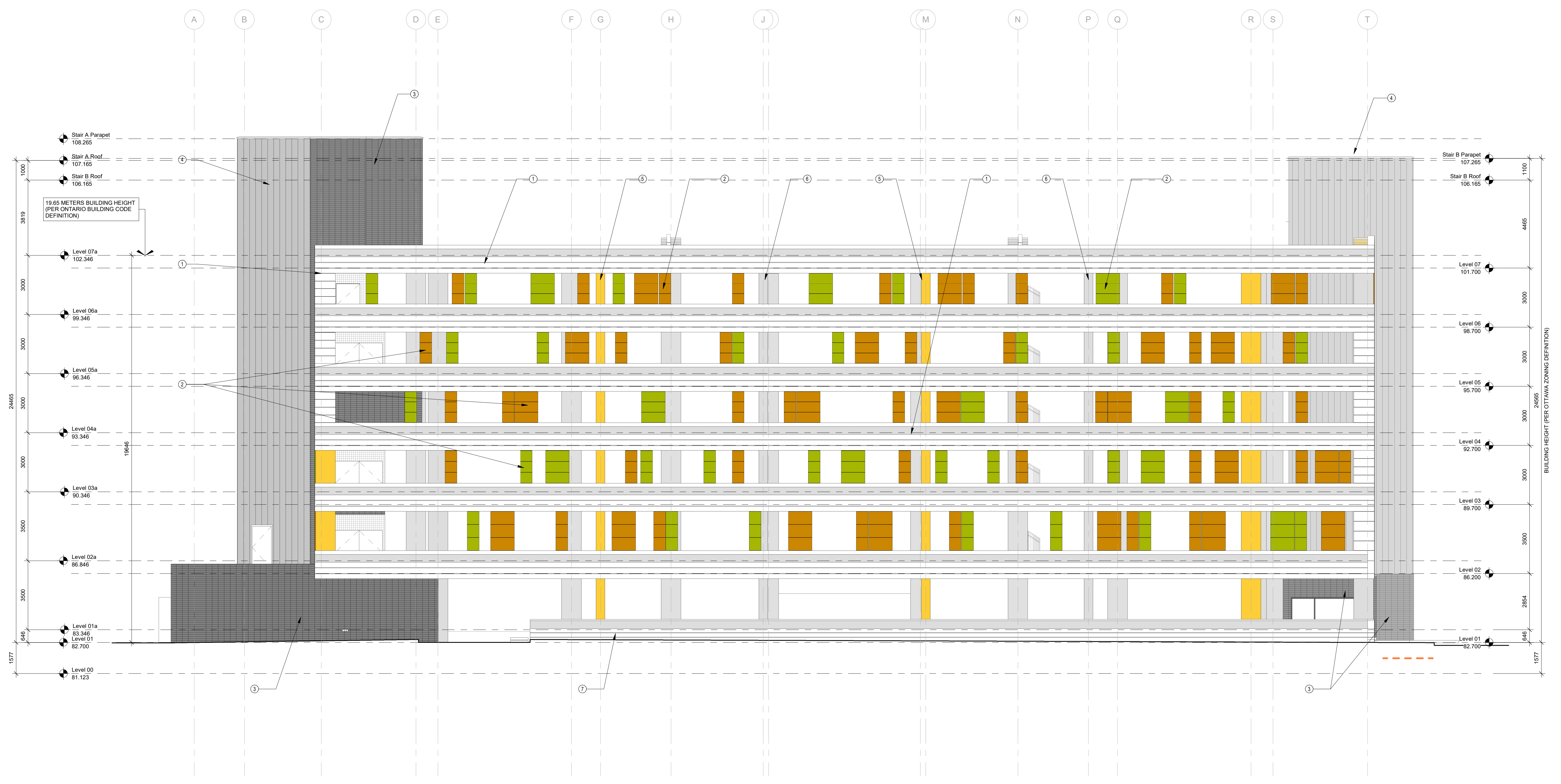
KEYPLAN



SITE PLAN DIAGRAM

ELEVATION NOTES

- CONCRETE SPANDRELS WITH REVEAL LINES
- COLOURED ALUMINUM PANELS, COLOUR MATCHED TO THE SPANDREL COLOURS OF THE 1000CARE FACILITY
- COLOURED CONCRETE BLOCK, BLOCK WILL BE USED AROUND THE ENTRANCE AREAS OF THE PARKING GARAGE, SIMILAR TO THE 1000CARE FACILITY, THE BLOCK WILL BE THE SAME PRODUCT FAMILY
- BLINDER-ACK ALUMINUM PANELS WILL BE MATCHED TO THE VERTICAL WATERFALL PANELS USED AT THE 1000CARE FACILITY, THE PRODUCTS WILL BE OF THE SAME PRODUCT FAMILY, MATCHING THE DESIGN LANGUAGE OF THE TWO BUILDINGS
- CONCRETE COLUMNS - COLUMNS WILL HAVE YELLOW COLOUR WILL MATCH VERTICAL SPANDRELS OF THE 1000CARE FACILITY, AND ALSO ADD A LEVEL OF PLAYFULNESS OF THE BUILDING
- CONCRETE COLUMNS - NATURAL COLOUR
- ARCHITECTURAL EXPOSED CONCRETE
- ALL EXTERIOR GLAZING TO BE 'SPD-SAFE' GLAZING



**2 WEST ELEVATION**  
AP2202 Scale: 1: 100



**1 EAST ELEVATION**  
AP2202 Scale: 1: 100

2 2023-08-16 ISSUED FOR 5PC SUBMISSION  
1 2023-07-31 ISSUED FOR 50% SUBMISSION  
0 2023-04-20 ISSUED FOR TECHNICAL SUBMISSION  
# DATE VERSION  
revisions

ON TARIO ASSOCIATION OF ARCHITECTS  
Jason Chang  
Licence #892

All drawing and specifications are the property of the architect. The contractor shall verify all dimensions and information on site and report any discrepancy to architect before proceeding.

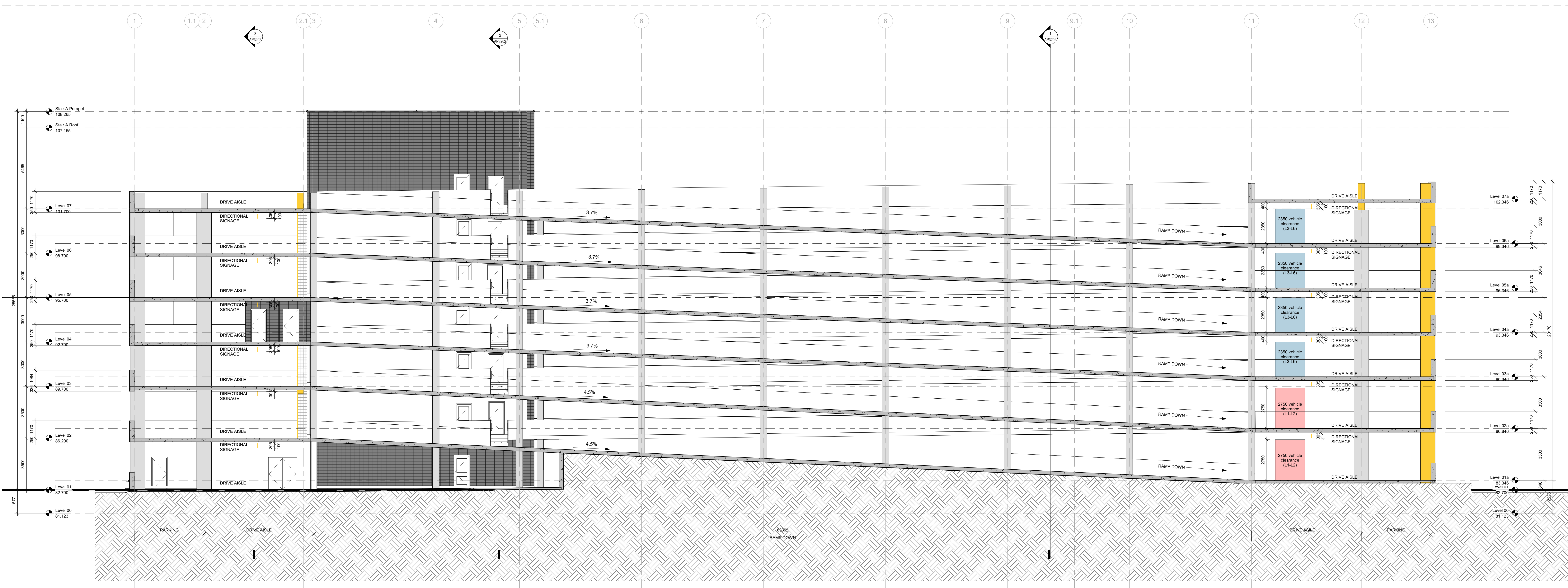
**1Door4Care: CHEO Integrated Treatment Centre: Parking Garage**

401 Smyth Road, Ottawa ON

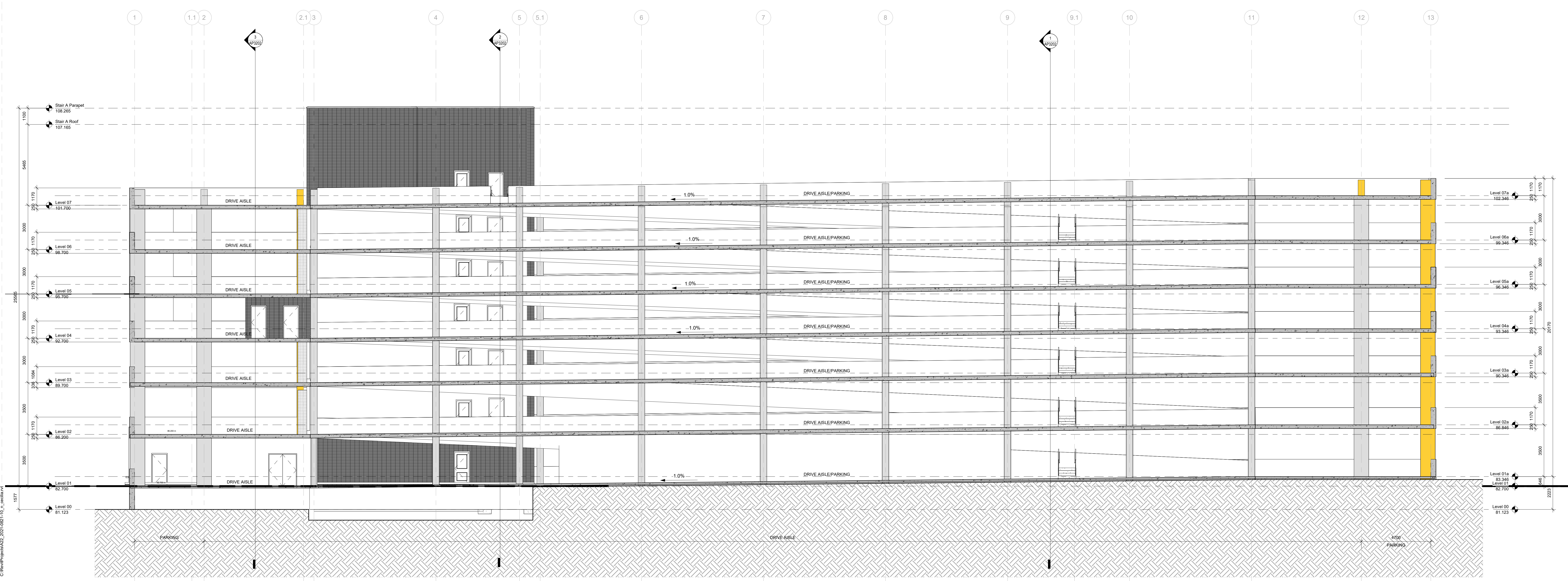
**BUILDING ELEVATIONS**

scale:	As Indicated
drawn by:	VP
reviewed by:	JCU/VD
job number:	2021-0801-19
plot date:	2023-08-16
drawing number:	AP2202

KEYPLAN



**2 BUILDING SECTION - LOOKING EAST /WEST THROUGH RAMP**  
AP3201 Scale: 1 : 100



**3 BUILDING SECTION - LOOKING EAST /WEST**  
AP3201 Scale: 1 : 100

2 2023-08-16 ISSUED FOR SPIC SUBMISSION  
1 2023-04-21 ISSUED FOR SPIC SUBMISSION  
0 2023-04-20 ISSUED FOR TECHNICAL SUBMISSION  
# DATE REVISION

ONTARIO ASSOCIATION OF ARCHITECTS  
JASON CHANG  
LICENSE #892

All drawing and specifications are the property of the architect. The contractor shall verify all dimensions and information on site and report any discrepancy to architect before proceeding.

**1Door4Care: CHEO Integrated Treatment Centre: Parking Garage**

401 Smyth Road, Ottawa ON

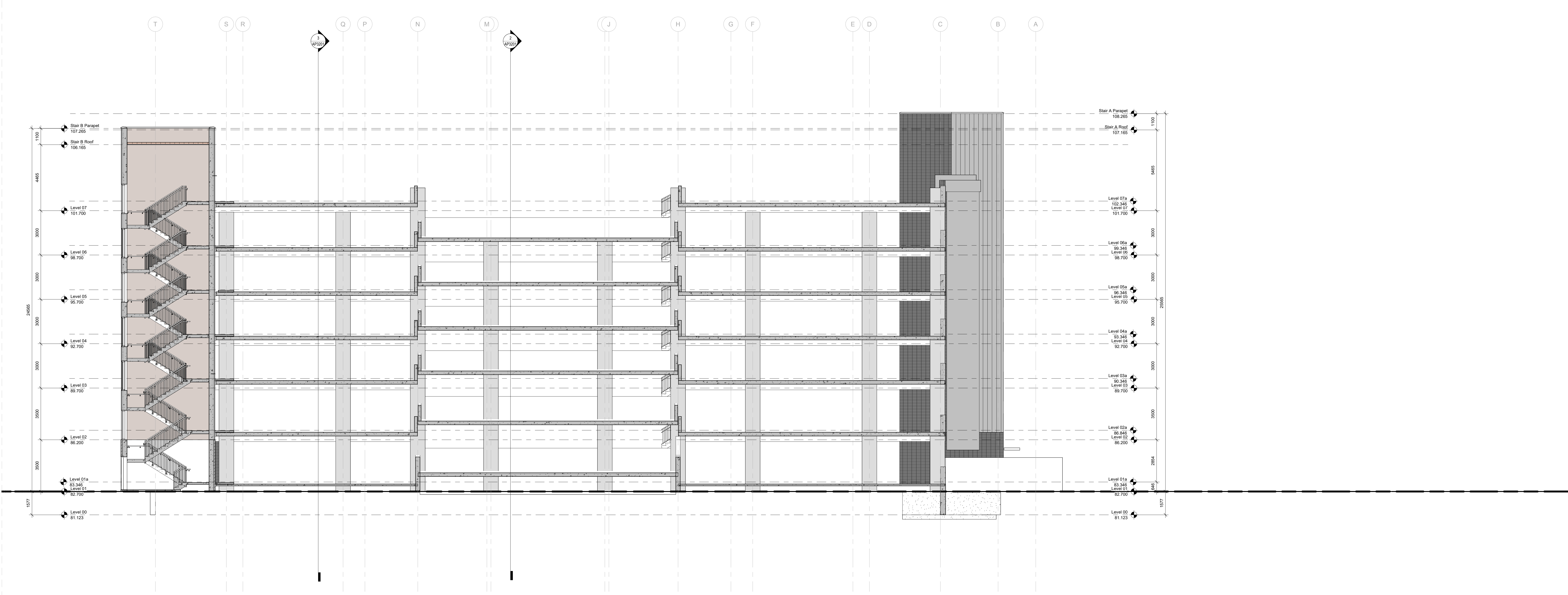
**BUILDING SECTIONS**

scale: 1 : 100  
drawn by: NV  
reviewed by: JCU/DV  
job number: 2021-0801-19  
plot date: 2023-08-16  
drawing number:

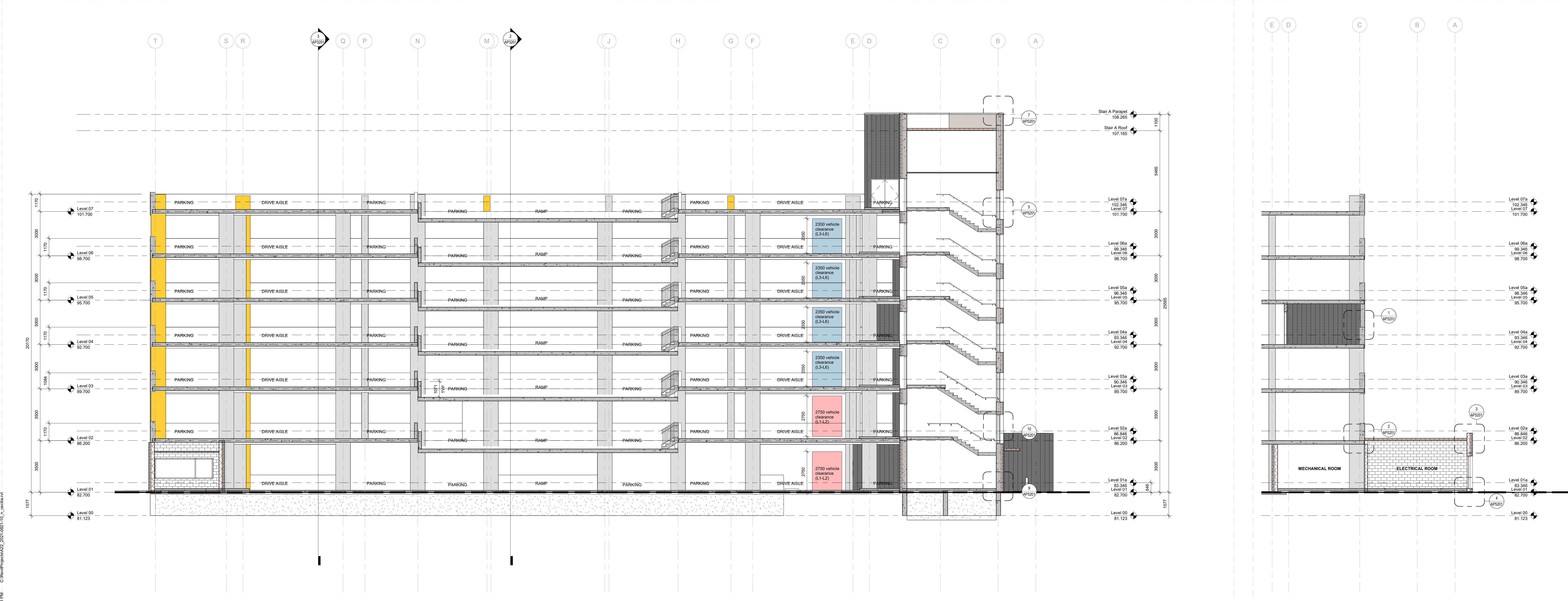
City of Ottawa File No. D07-12-22-0170  
City of Ottawa Plan No. 18912

**AP3201**

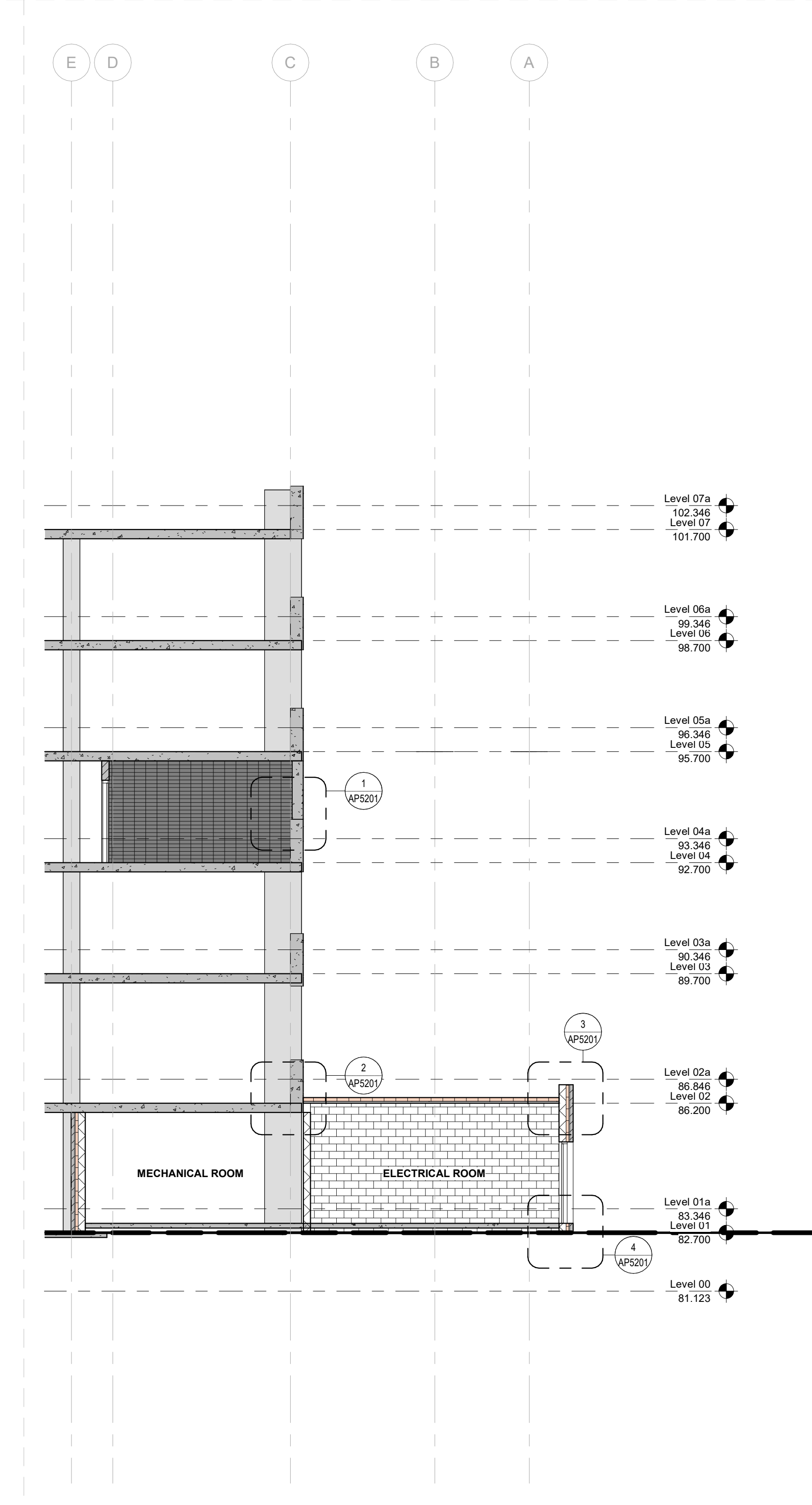
KEYPLAN



**1** BUILDING SECTION - NORTH/SOUTH AT GRID 10  
Scale: 1 : 100



**2** BUILDING SECTION - NORTH/SOUTH AT GRID 1  
Scale: 1 : 100



**3** Building Section 05  
Scale: 1 : 100

2 2023-08-16 ISSUED FOR SPC SUBMISSION  
1 2023-04-21 ISSUED FOR PDC SUBMISSION  
0 2023-04-21 ISSUED FOR TECHNICAL SUBMISSION  
# DATE: version:

revisions

ONTARIO ASSOCIATION OF ARCHITECTS  
JASON CHANG  
LICENCE #8982

All drawing and specifications are the property of the architect. The contractor shall verify all dimensions and information on site and report any discrepancy to architect before proceeding.

**1Door4Care: CHEO Integrated Treatment Centre: Parking Garage**

401 Smyth Road, Ottawa ON

**BUILDING SECTIONS**

scale: 1 : 100  
drawn by: NV  
reviewed by: JCU/DV  
job number: 2023-0801-19  
plot date: 2023-08-16  
drawing number:

**AP3202**

City of Ottawa File No. **D07-12-22-0170**  
City of Ottawa Plan No. **18912**

2023-08-16 11:17:11 PM C:\pwworking\AP3202\_2023-08-16\10\_0\_0\_0.dwg