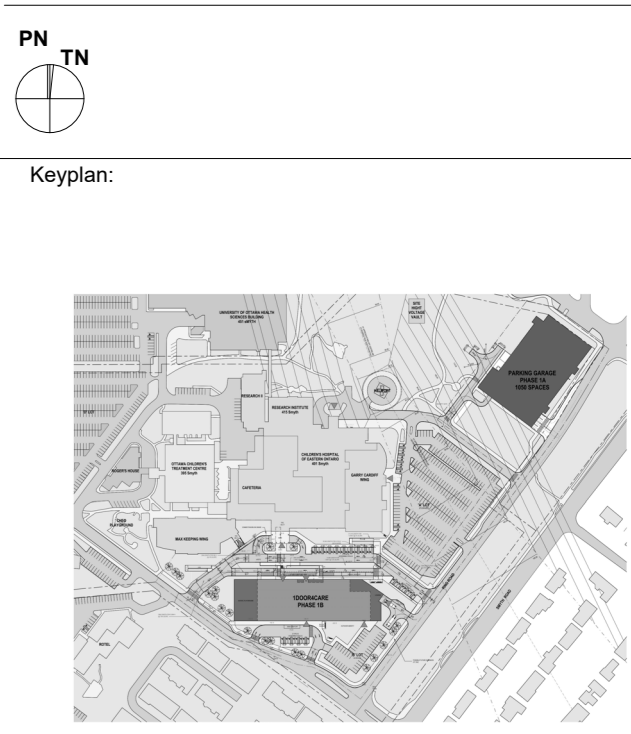


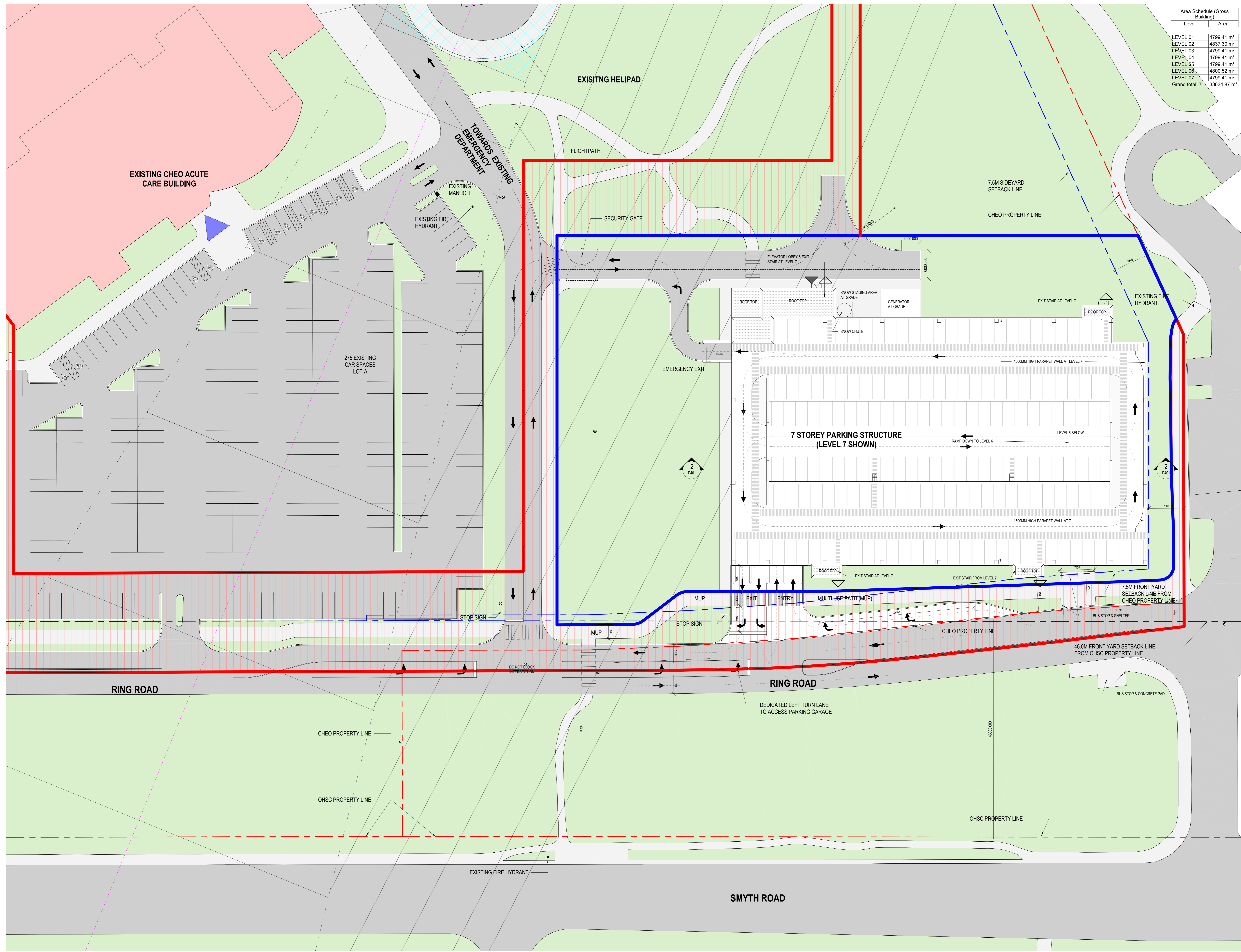
Area Schedule (Gross Building)	
Level	Area
LEVEL 01	4799.41 m ²
LEVEL 02	4837.30 m ²
LEVEL 03	4799.41 m ²
LEVEL 04	4799.41 m ²
LEVEL 05	4799.41 m ²
LEVEL 06	4800.52 m ²
LEVEL 07	4799.41 m ²
Grand total:	33634.87 m ²



NO. ISSUED FOR: _____ DATE: _____
 1 ISSUED FOR IFC: _____ 04/04/23

This drawing shall not be used for construction purposes until the seal appearing herein is signed and dated by the Architect or Engineer

- Extent of Construction Site - Phase 1A
- Extent of Construction Site - Phase 1B
- Required Improvement Areas



B+H
 320 Bay Street, Suite 200
 Toronto, ON, Canada, M5H 4A6
 T: 416.598.2299 F: 416.586.0559

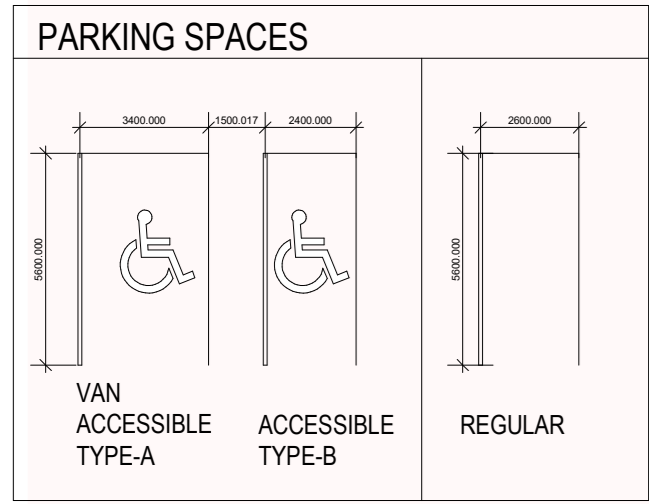
Infrastructure Ontario
 1 Dundas St. West, Suite 2000
 Toronto, ON M5G 1Z3
 T: 416.327.3537

CHEO
 401 Smyth Rd.
 Ottawa, ON K1H 1K1
 T: 613.737.7600

Project: **1Door4Care**
 CHEO Integrated Treatment Centre

SITE PLAN - PHASE 1A

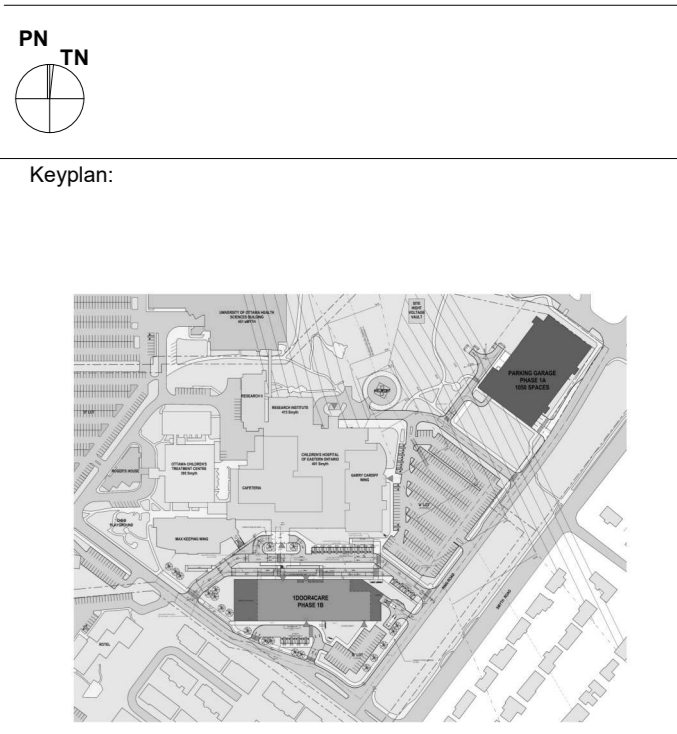
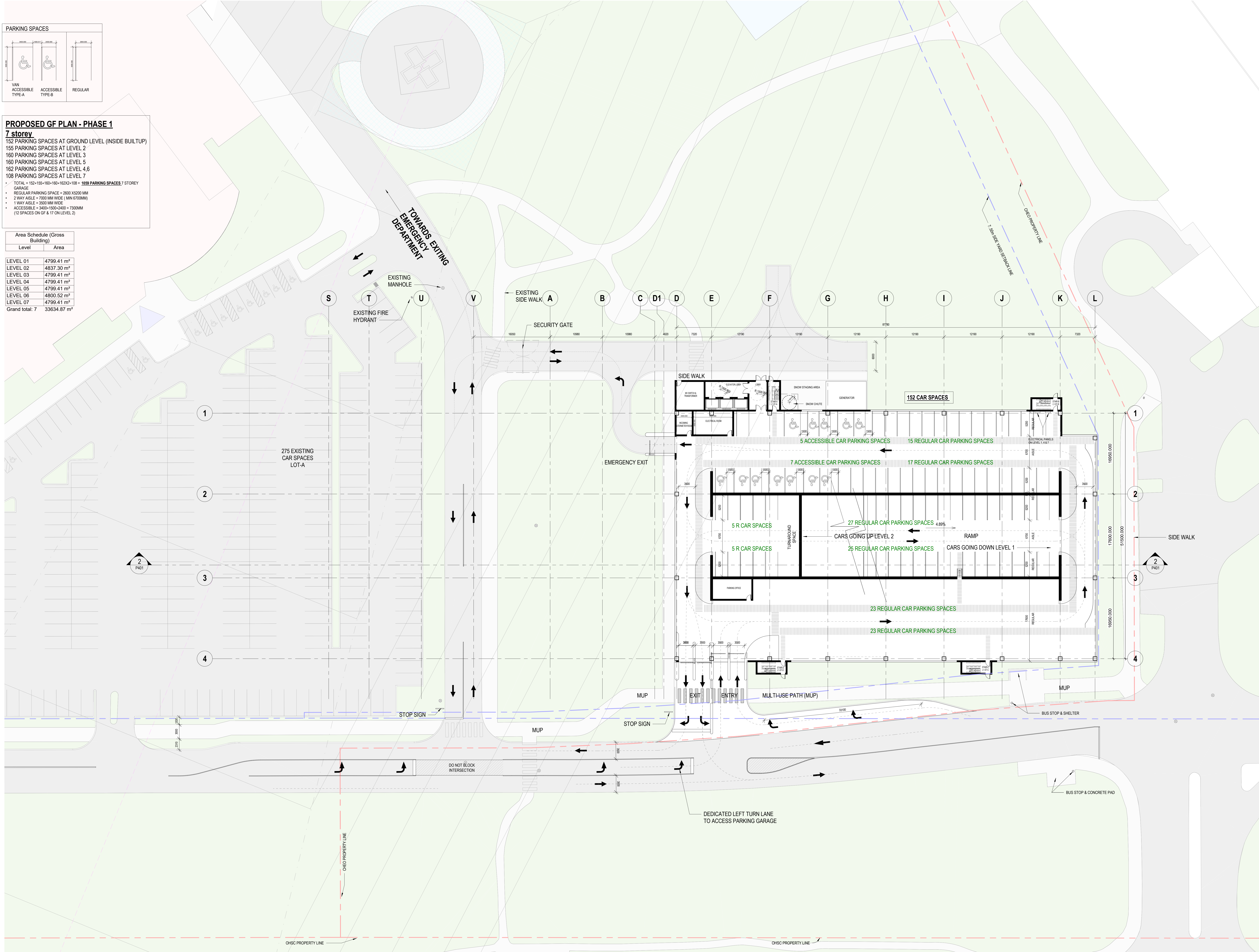
Scale: As indicated
 Date: 01/20/22
P003



PROPOSED GF PLAN - PHASE 1

- 7 storey**
 152 PARKING SPACES AT GROUND LEVEL (INSIDE BUILTUP)
 155 PARKING SPACES AT LEVEL 2
 160 PARKING SPACES AT LEVEL 3
 160 PARKING SPACES AT LEVEL 5
 162 PARKING SPACES AT LEVEL 4,6
 108 PARKING SPACES AT LEVEL 7
- TOTAL = 152+155+160+160+162x2+108 = 1699 PARKING SPACES 7 STOREY
 - GARAGE
 - REGULAR PARKING SPACE = 2600 X 5200 MM
 - 2 WAY AISLE = 7000 MM WIDE (MIN 6700MM)
 - 1 WAY AISLE = 3500 MM WIDE
 - ACCESSIBLE = 3400+1500+2400 = 7300MM (12 SPACES ON GF & 17 ON LEVEL 2)

Area Schedule (Gross Building)	
Level	Area
LEVEL 01	4799.41 m ²
LEVEL 02	4837.30 m ²
LEVEL 03	4799.41 m ²
LEVEL 04	4799.41 m ²
LEVEL 05	4799.41 m ²
LEVEL 06	4800.52 m ²
LEVEL 07	4799.41 m ²
Grand total: 7	33634.87 m ²



NO.	ISSUED FOR	DATE
1	ISSUED FOR IFC	04/04/23

This drawing shall not be used for construction purposes until the seal appearing herein is signed and dated by the Architect or Engineer

PDC:

320 Bay Street, Suite 200
 Toronto, ON, Canada, M5H 4A6
 T: 416.596.2299 F: 416.586.0599

Client:

1 Dundas St. West, Suite 2000
 Toronto, ON M5G 1Z3
 T: 416.937.3537

Client:

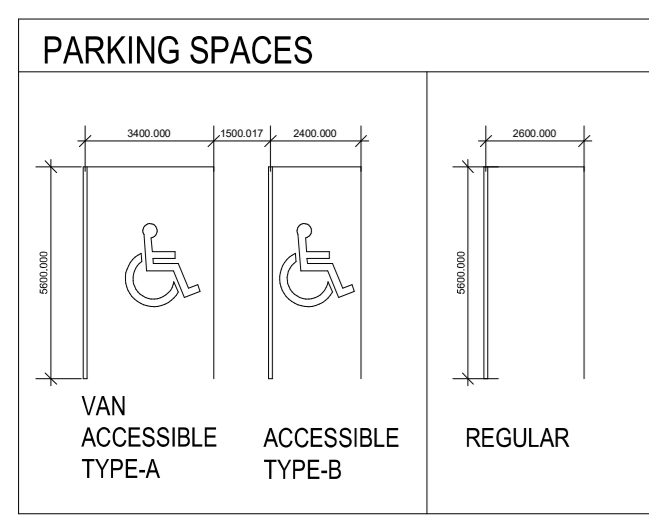
401 Smyth Rd
 Ottawa, ON K1H 1K1
 T: 613.737.7600

Project:
1Door4Care
 CHEO Integrated Treatment Centre

FLOOR PLAN LEVEL1- PHASE 1A

Scale: 2111095
 Date: As indicated
 01/20/22

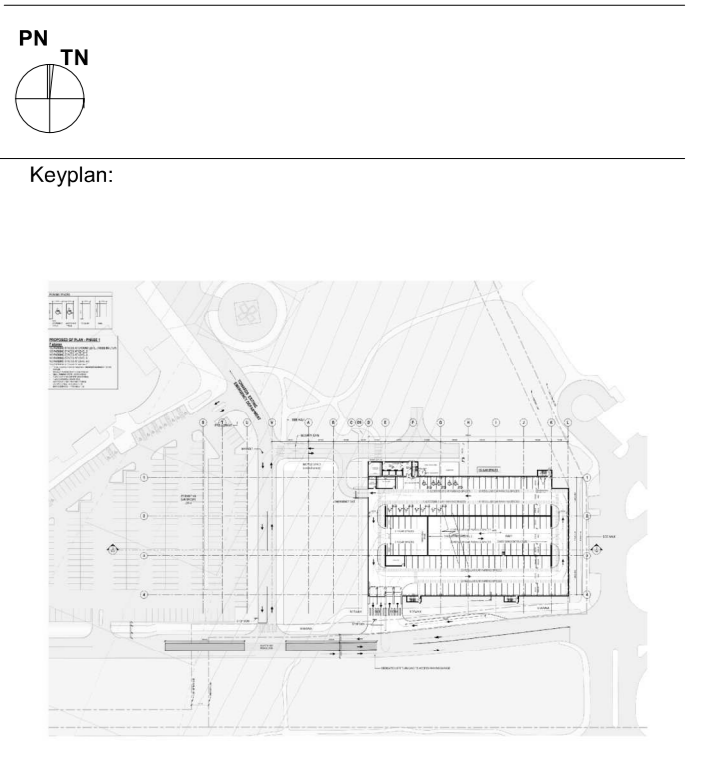
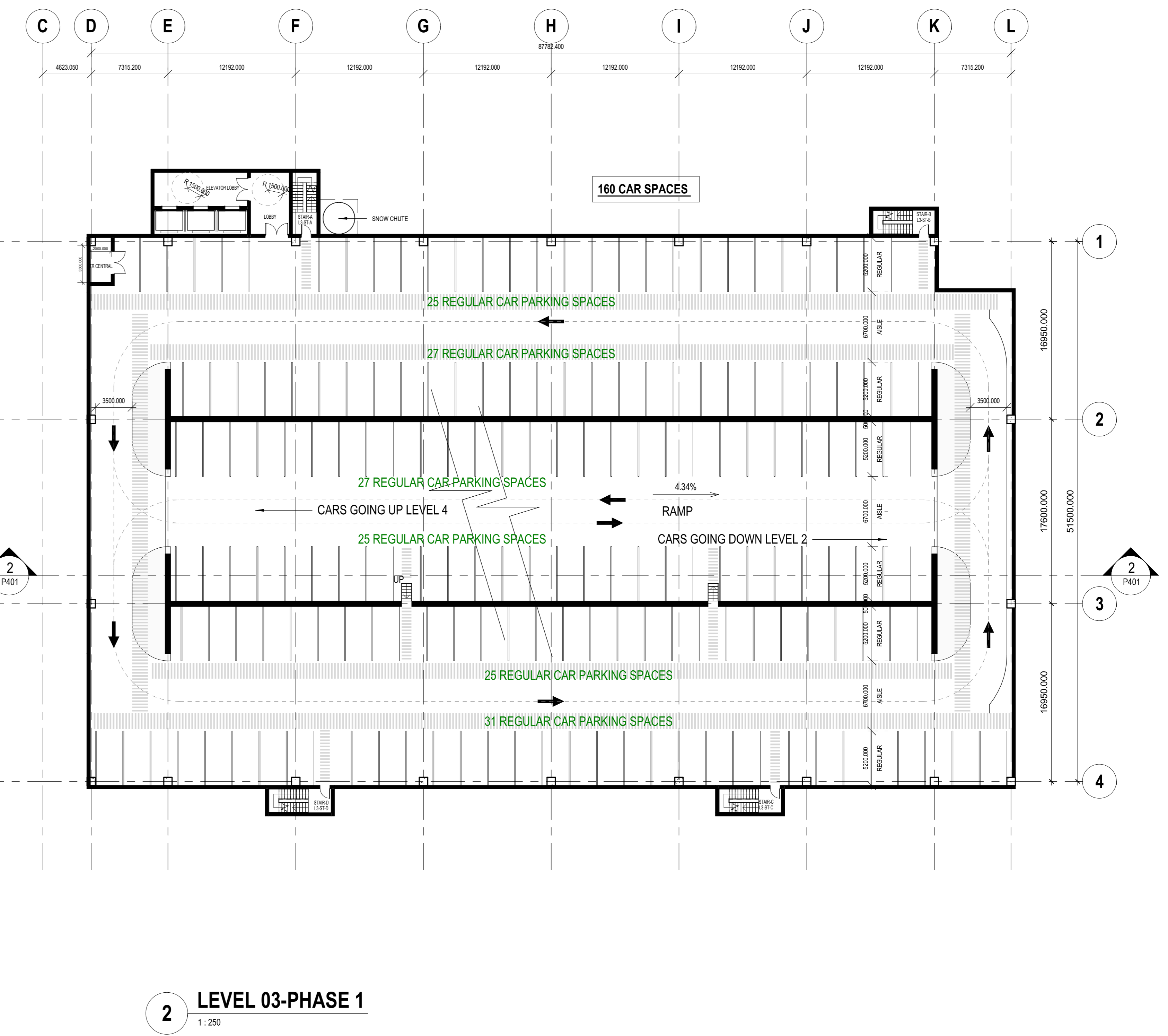
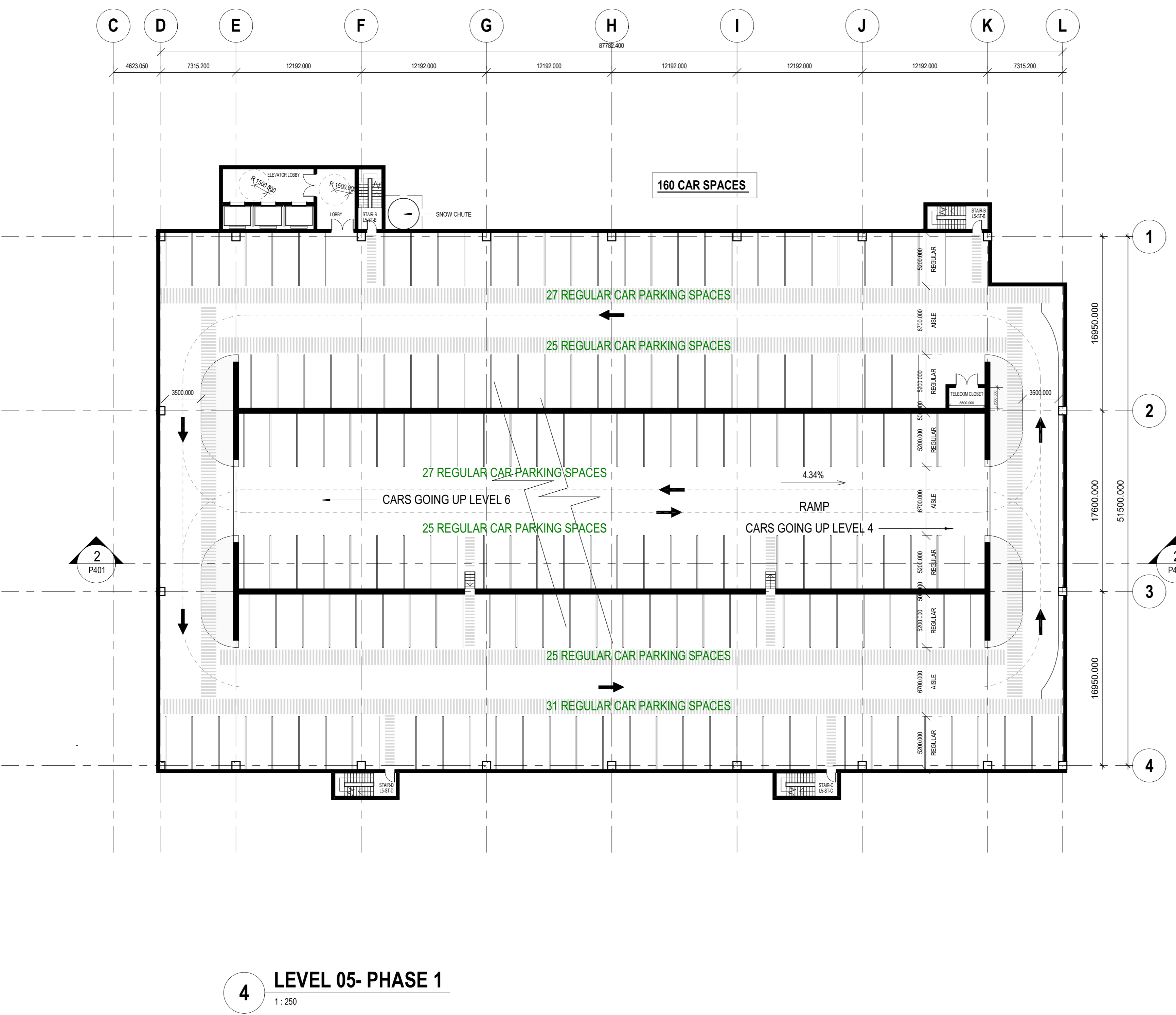
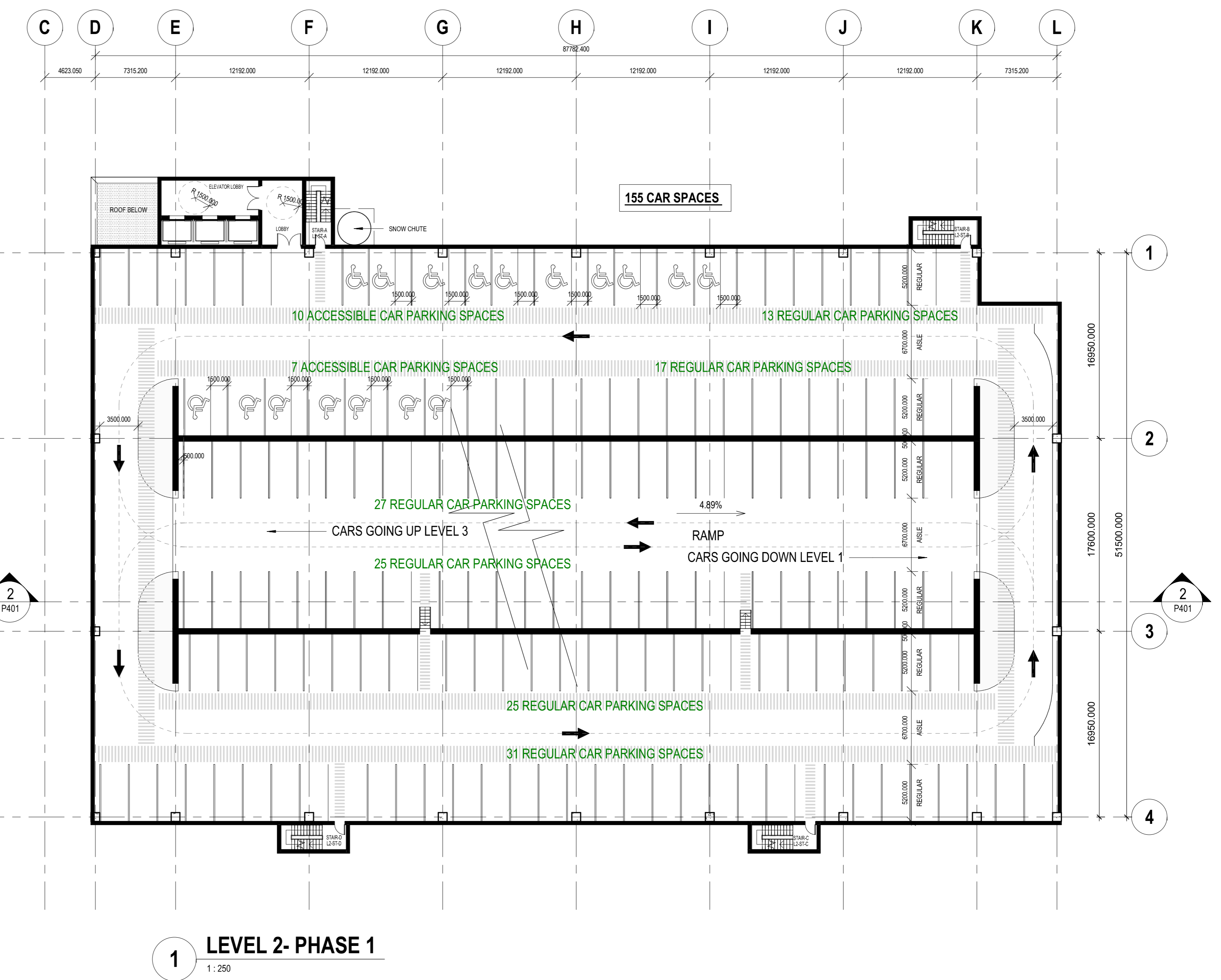
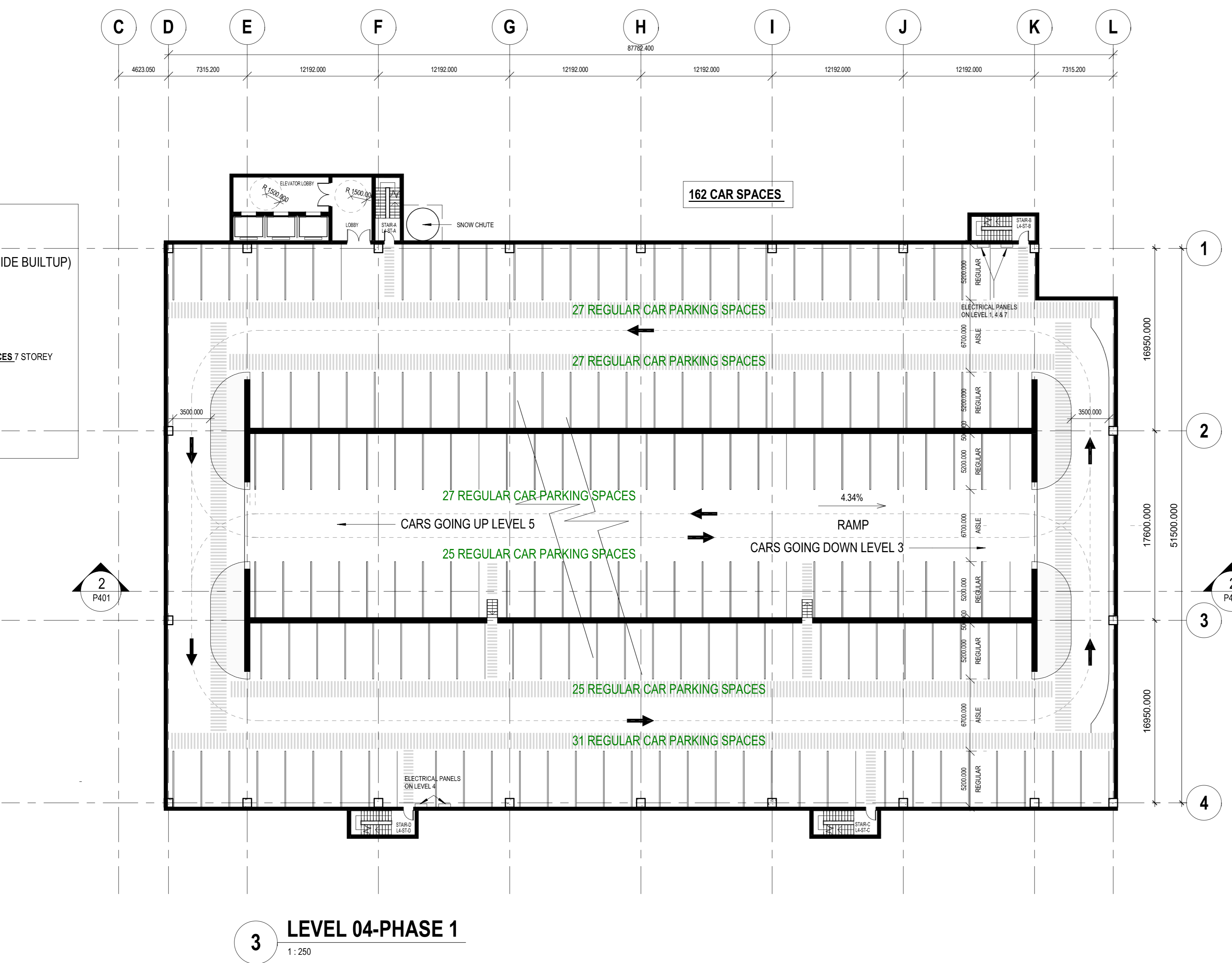
P201



PROPOSED GF PLAN - PHASE 1
7 storey
 152 PARKING SPACES AT GROUND LEVEL (INSIDE BUILTUP)
 155 PARKING SPACES AT LEVEL 2
 160 PARKING SPACES AT LEVEL 3
 160 PARKING SPACES AT LEVEL 4
 162 PARKING SPACES AT LEVEL 5
 108 PARKING SPACES AT LEVEL 6
 108 PARKING SPACES AT LEVEL 7

TOTAL = 152+155+160+160+162+108 = 1099 PARKING SPACES 7 STOREY GARAGE

- REGULAR PARKING SPACE = 2600 X 5200 MM
- 2 WAY AISLE = 7000 MM WIDE (MIN 6700MM)
- 1 WAY AISLE = 3500 MM WIDE
- ACCESSIBLE = 3400 X 5000 X 2400 = 7300MM (12 SPACES ON GF & 17 ON LEVEL 2)



NO. ISSUED FOR: DATE:
 1 ISSUED FOR R/C: 04/28/22

This drawing shall not be used for construction purposes until the seal appearing herein is signed and dated by the Architect or Engineer

PDC:

 320 Bay Street, Suite 200
 Toronto, ON Canada M5H 4A6
 T: 416.596.2299 F: 416.586.0559

Client:

 1 Dundas St. West, Suite 2000
 Toronto, ON M5G 1Z3
 T: 416.507.3037

Client:

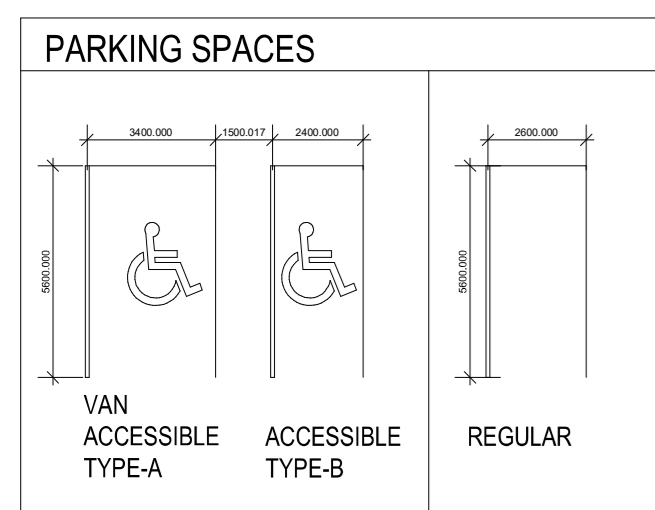
 401 Smyth Rd
 Ottawa, ON K1H 8L1
 T: 613.737.7600

Project:
1Door4Care
 CHEO Integrated Treatment Centre

FLOOR PLAN LEVEL 2, 3, 4 & 5 - PHASE 1A

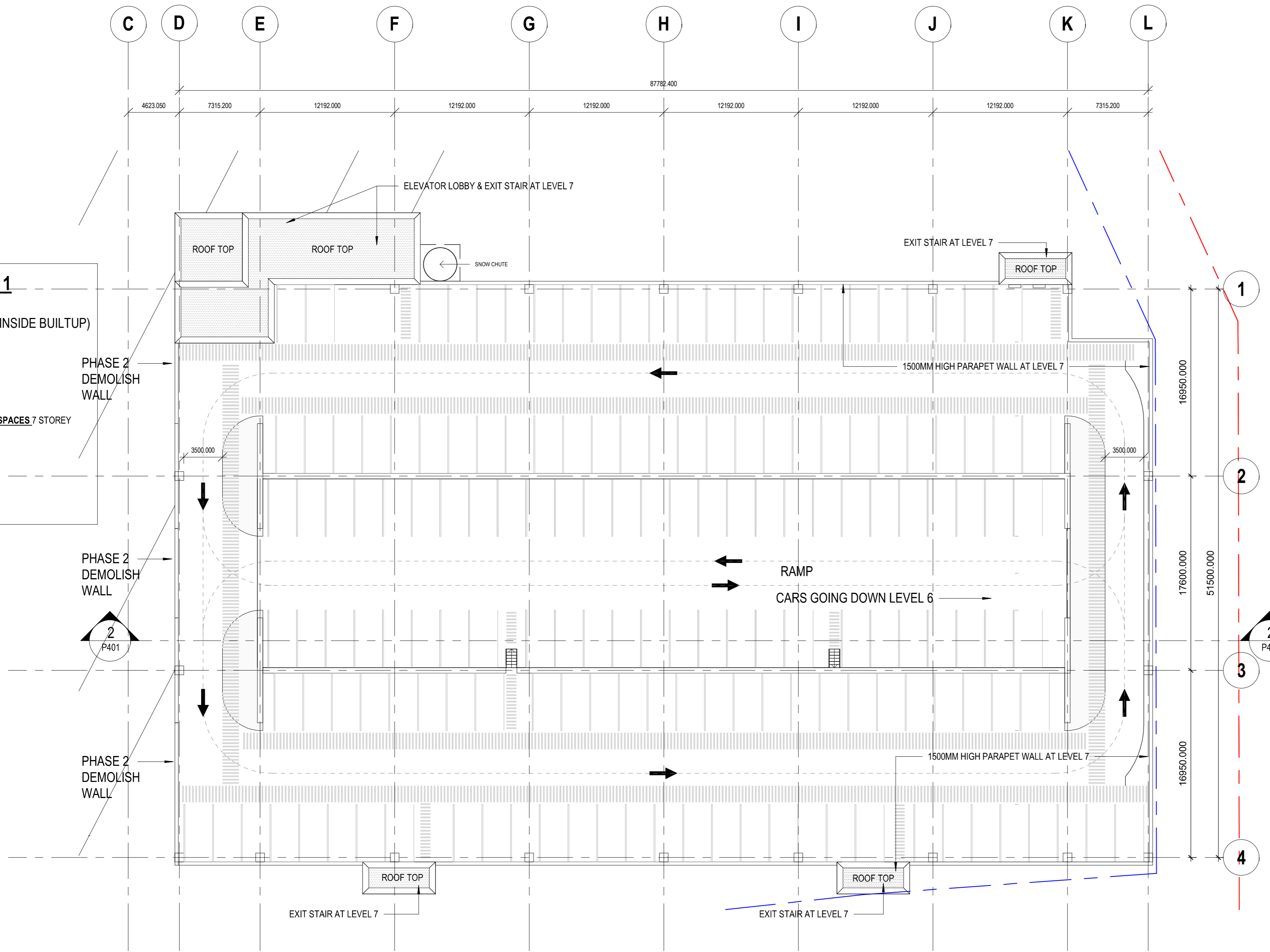
Scale: 2111095
 Date: As indicated
 Date: 04/28/22

P202

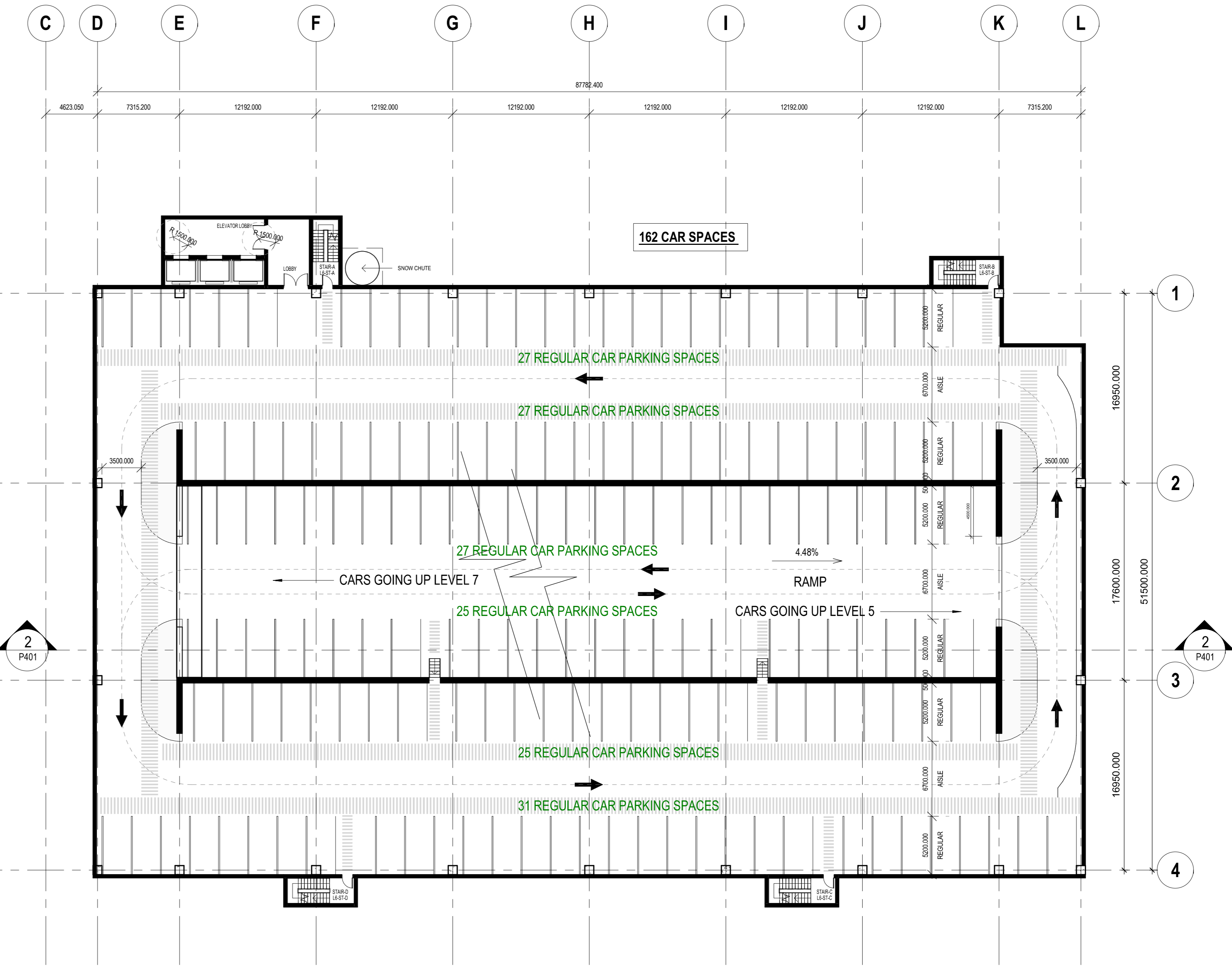


PROPOSED GF PLAN - PHASE 1

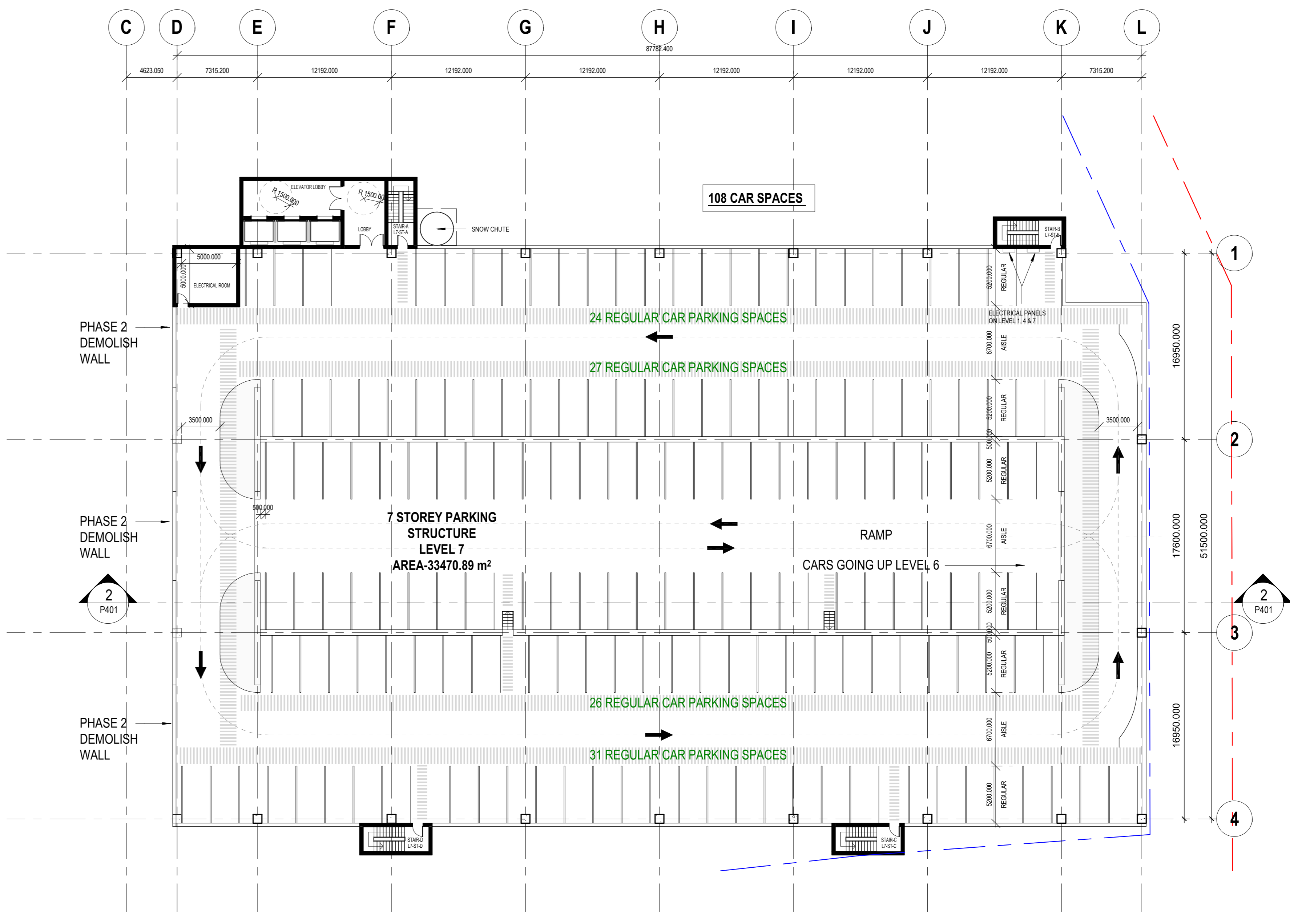
- 7 storey**
 152 PARKING SPACES AT GROUND LEVEL (INSIDE BUILTUP)
 155 PARKING SPACES AT LEVEL 2
 160 PARKING SPACES AT LEVEL 3
 160 PARKING SPACES AT LEVEL 5
 162 PARKING SPACES AT LEVEL 4,6
 108 PARKING SPACES AT LEVEL 7
- TOTAL = 152+155+160+160+162+108 = 899 PARKING SPACES 7 STOREY GARAGE
 - REGULAR PARKING SPACE = 2600 X 5200 MM
 - 2 WAY ASLE = 7000 MM WIDE (MIN 6700MM)
 - 1 WAY ASLE = 3500 MM WIDE
 - ACCESSIBLE = 3400+1500+2400 = 7300MM (12 SPACES ON GF & 17 ON LEVEL 2)



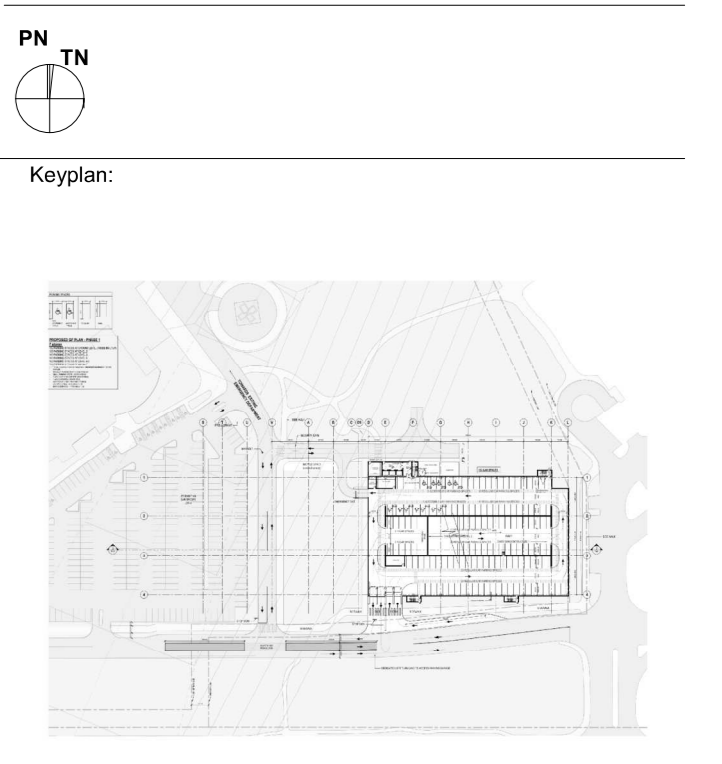
3 ROOF - PHASE 1
1:250



1 LEVEL 06 - PHASE 1
1:250



2 LEVEL 07 - PHASE 1
1:250



NO. ISSUED FOR: DATE:
 1 ISSUED FOR R/C: 04/04/22

This drawing shall not be used for construction purposes until the seal appearing herein is signed and dated by the Architect or Engineer

PDC:

 320 Bay Street, Suite 200
 Toronto, ON Canada M5H 4A6
 t. 416.596.2299 f. 416.586.0599

Client:

 1 Dundas St. West, Suite 2000
 Toronto, ON M5G 1Z3
 t. 416.507.3037

Client:

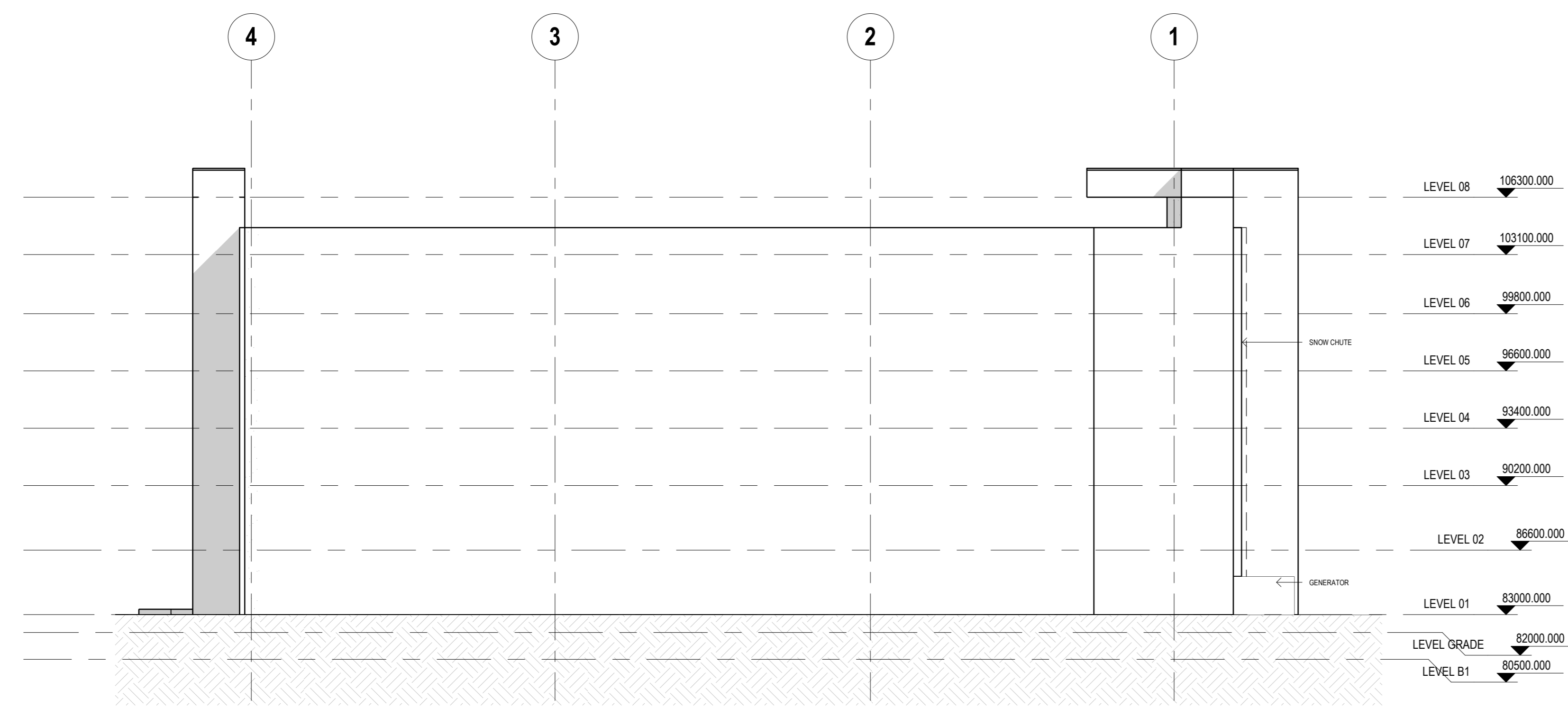
 401 Smyth Rd
 Ottawa, ON K1H 8L1
 t. 613.737.7600

Project:
1Door4Care
 CHEO Integrated Treatment Centre

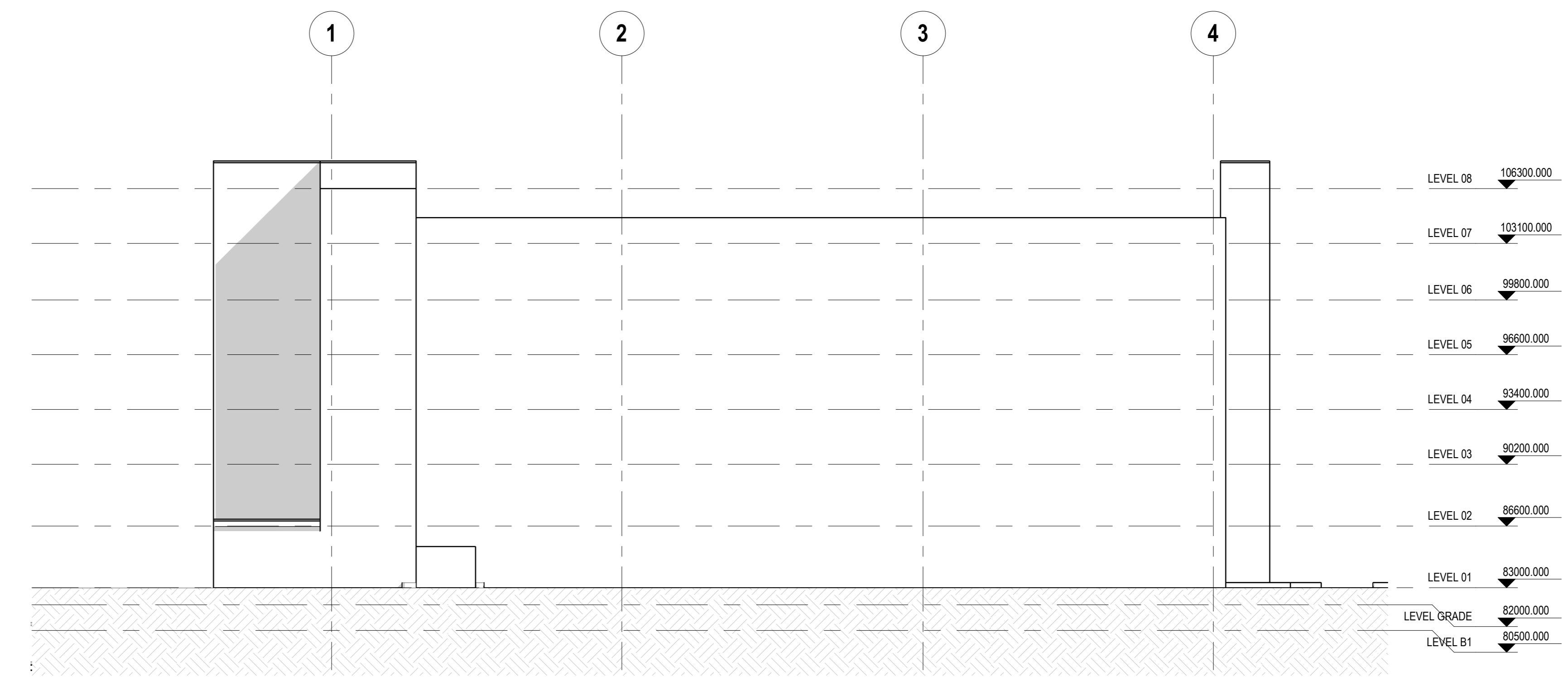
FLOOR PLAN LEVEL 6,7 & ROOF - PHASE 1A

Scale: 2111095
 Date: As indicated
 Date: 05/10/22

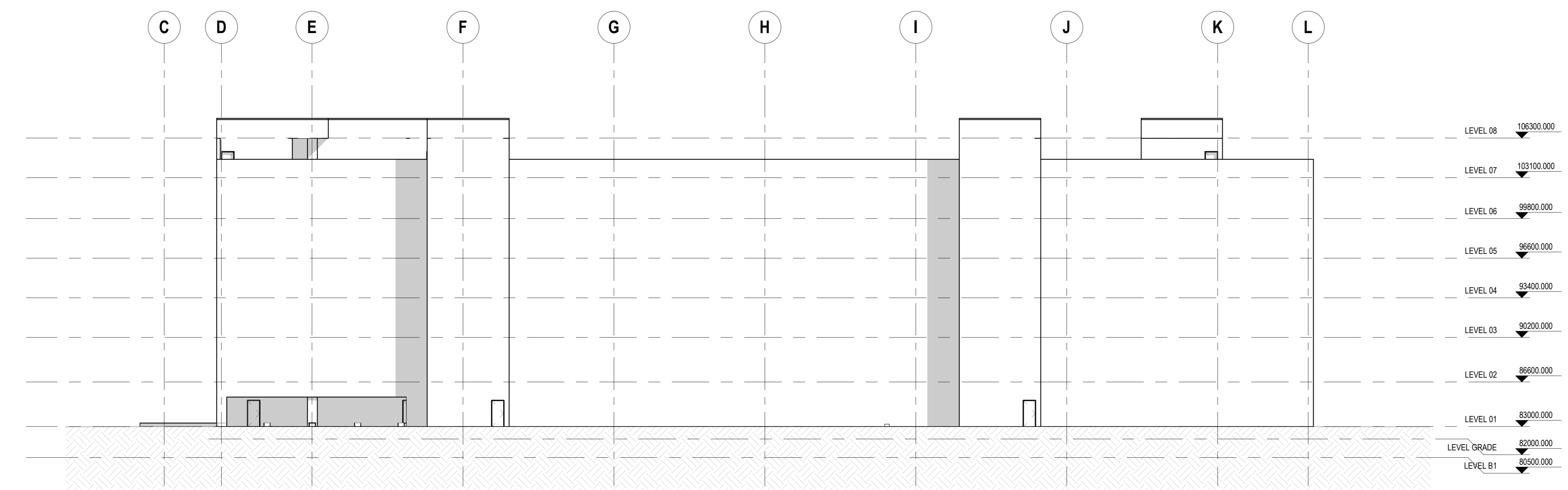
P203



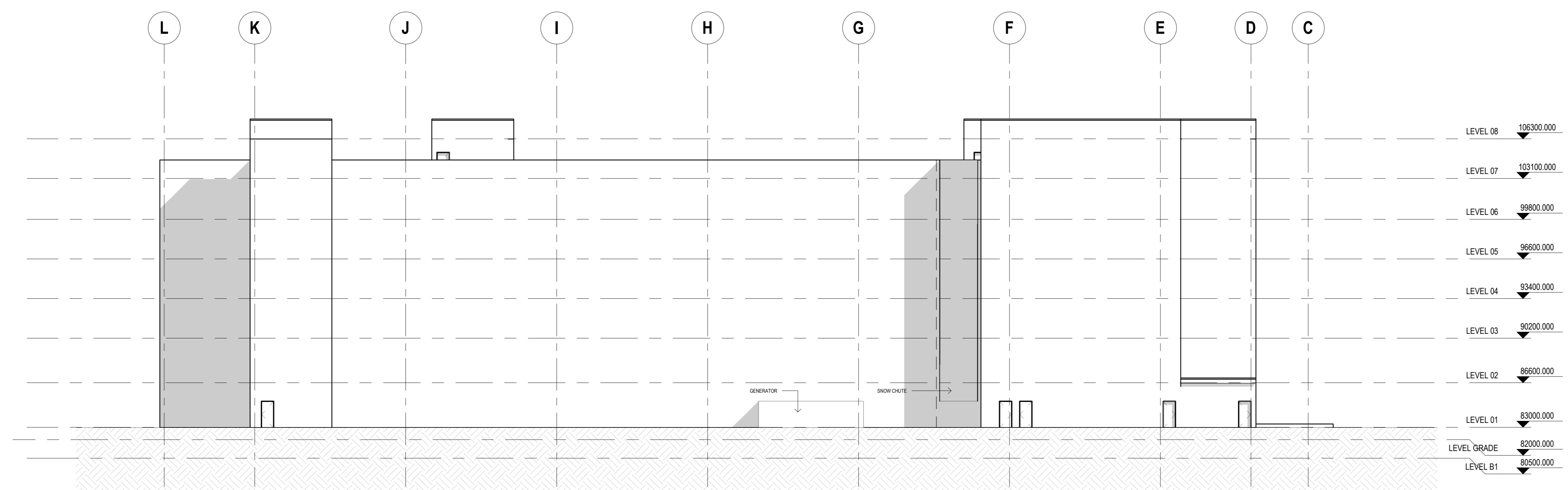
3 ELEVATION
1:200



4 ELEVATION
1:200



2 ELEVATION
1:200



1 ELEVATION
1:200

NO.	ISSUED FOR	DATE
1	ISSUED FOR BPC	04/04/22

This drawing shall not be used for construction purposes until the seal appearing herein is signed and dated by the Architect or Engineer

PDC:

320 Bay Street, Suite 200
 Toronto, ON Canada, M5H 4A6
 T: 416.596.2299 F: 416.586.0599

Client:

1 Dundas St. West, Suite 2000
 Toronto, ON M5G 1Z3
 T: 416.307.3037

Client:

401 Smyth Rd
 Ottawa, ON K1H 8L1
 T: 613.737.7600

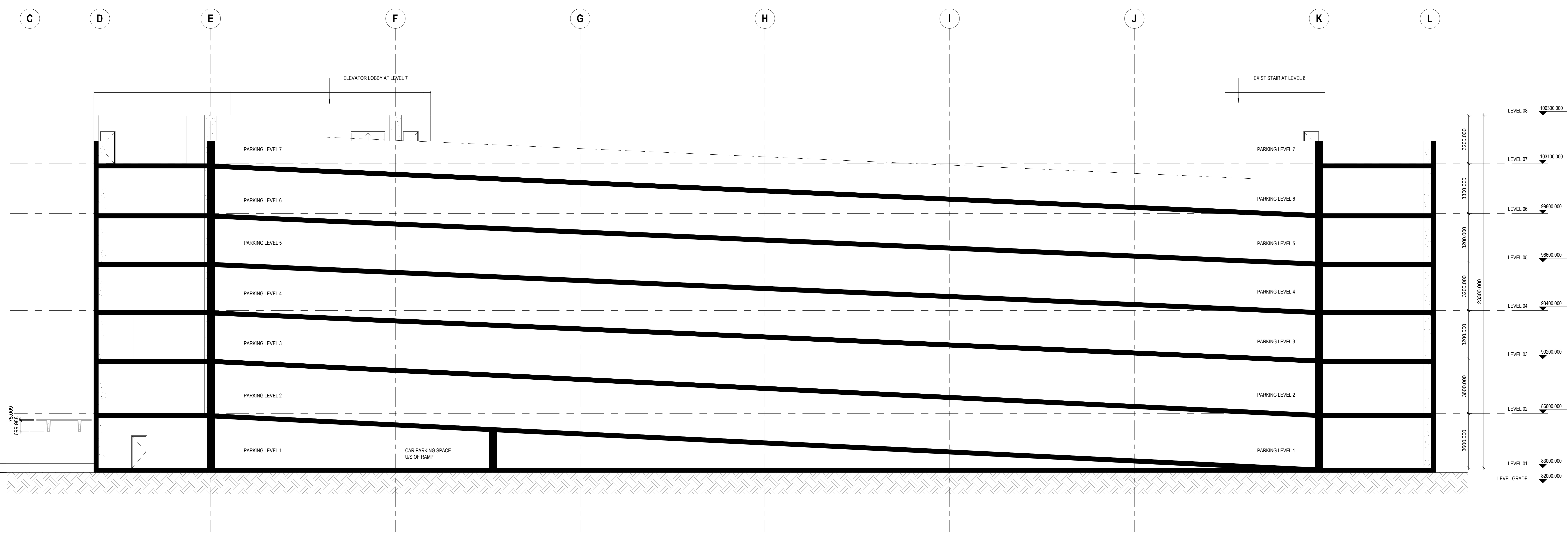
Project:
1Door4Care
CHEO Integrated Treatment Centre

ELEVATION - PHASE 1A

Scale: 1:200
 Date: 07/20/22
P400A

PROPOSED GF PLAN - PHASE 1
7 storey
 152 PARKING SPACES AT GROUND LEVEL (INSIDE BUILTUP)
 155 PARKING SPACES AT LEVEL 2
 160 PARKING SPACES AT LEVEL 3
 160 PARKING SPACES AT LEVEL 4
 162 PARKING SPACES AT LEVEL 5
 162 PARKING SPACES AT LEVEL 6
 108 PARKING SPACES AT LEVEL 7
 • TOTAL = 152+155+160+160+162+162+108 = **1099 PARKING SPACES** 7 STORE GARAGE
 • REGULAR PARKING SPACE = 2600 X 5600 MM
 • SMALL PARKING SPACE = 2400 X 4600MM
 • 2 WAY AISLE = 7000 MM WIDE (MIN 6700MM)
 • 1 WAY ENTRANCE = 3000MM WIDE
 • ACCESSIBLE = 3400 X 1000 X 2400 = 7300MM (12 SPACES ON GF & 17 ON LEVEL 2)
 • BICYCLE SPACES = 1 PER 1000m² = 20

PN
 Keyplan:
 NO. ISSUED FOR DATE
 1 ISSUED FOR R/C 24/04/22
 This drawing shall not be used for construction purposes until the seal appearing herein is signed and dated by the Architect or Engineer



PDC:
B+H
 320 Bay Street, Suite 200
 Toronto, ON, Canada, M5H 4A6
 T: 416.596.2299 F: 416.586.0599
 Client:
Infrastructure Ontario
 1 Dundas St. West, Suite 2000
 Toronto, ON M5G 1Z3
 T: 416.597.3537
 Client:
CHEO
 401 Smyth Rd
 Ottawa, ON K1H 8L1
 T: 613.737.7600

Project:
1Door4Care
 CHEO Integrated Treatment Centre

SECTIONS- PHASE 1A

Scale: 2111095
 Date: As indicated
 Date: 03/01/22
P401
 DWG No:
 Plan #: 18912 | File #: D07-12-22-0176

2 SECTION THROUGH RAMP - PHASE 1
 1:100

10/13/2022 2:52:11 PM
 BIM_360/J2111095 - CHEO/2111095-BH-ARCH-PARG-R2021.rvt