

NEW PANEL		100AMP 120/240V 1Ø 3W				RECESS MTD	
WATTS FOR	P	AMP	CCT	AMP	P	FOR	WATTS
200 EMERGENCY BATTERY UNIT EBT	1	15	1	2	35	2	6500
600 LIGHTING	1	15	3	4			
600 REC DISPATCH RM (3)	1	15	5	6	20	2	3000
800 REC DISPATCH RM (4)	1	15	7	8			
1000 BASEBOARD HEATER (SPAN) RM (4)	1	15	9	10	20	1	1200
600 REC MANAGER'S OFFICE (3)	1	15	11	12	15	1	400
600 REC DISPATCH RM (4)	1	15	13	14	15	1	400
500 BASEBOARD HEATER (MAN) OFFICE	1	15	15	16	15	1	500
400 OUTDOOR REC (2)	1	15	17	18	18	1	200
400 REC AT OUTDOOR UNIT	1	20	19	20	20	1	200
1000 BASEBOARD HEATER CONFERENCE RM	1	15	21	22	15	1	200
1000 BASEBOARD HEATER CONFERENCE RM	1	15	23	24	20	1	400
600 REC. HOUSEKEEPING (3)	1	15	25	26	15	1	400
500 EXTERIOR FLOOD LIGHTS	1	15	27	28	15	1	400
200 WC EMERGENCY CALL SYSTEM	1	15	29	30	20	1	*
* SPARE	1	15	33	34	20	1	*
* SPARE	1	15	35	36	15	1	*
* SPARE	1	15	37	38	15	1	*
* SPARE	1	15	39	40	15	1	*
* SPARE	1	15	41	42	15	1	*

FIXTURE SCHEDULE			
NOTES:			
1. CONTRACTOR AND FIXTURE SUPPLIER ARE RESPONSIBLE TO PROVIDE ALL PLASTER AND FINISHING FRAMES, MOUNTING HARDWARE, AND ACCESSORIES TO SUIT ARCHITECTURAL CEILING SCHEDULE.			
2. CONTRACTOR AND SUPPLIER ARE RESPONSIBLE TO VERIFY NUMBER OF DRIVERS REQUIRED FOR MULTIPLE SWITCHING OF FIXTURES. REFER TO FLOOR PLANS FOR CONFIGURATION OF SWITCHING.			
3. MANUFACTURER TO NOTE ON SHOP DRAWINGS THAT DRIVERS, DIMMING SWITCHES AND PHOTOCONTROLLERS ARE ALL COMPATIBLE.			
TYPE	DESCRIPTION	LAMPS	MTG HT
A	LED EXTERIOR AREA LIGHT, ALUMINUM HOUSING, 120V DRIVER, MOUNTING ARM TO SUIT EXISTING POLE, PHOTO SENSOR, COLOUR TO BE SELECTED BY ARCHITECT. CURRENT EVOLVE MODEL EACL-01-1-Dx-AW-7-30 OR EQUIVALENT.	8800 LUMEN 3000K LED	POLE MOUNTED
B	LED WALL PACK, ALUMINUM HOUSING, 120V DRIVER, PHOTO SENSOR, COLOUR TO BE SELECTED BY ARCHITECT. CURRENT BEACON MODEL RWL1-4BL-35-3K7-4W-120 OR EQUIVALENT	4500 LUMEN 3000K LED	WALL MOUNTED

- ### GENERAL NOTES
- DO NOT SCALE DRAWINGS FOR INSTALLATION PURPOSES. OBTAIN ALL DIMENSIONS FROM ARCHITECTURAL PLANS, MANUFACTURER'S SHOP DRAWINGS, AND ON SITE INSPECTIONS.
 - PRIOR TO INSTALLATION OF BOXES IN WALLS, VERIFY THAT NO INTERFERENCES EXIST. CHECK ARCHITECTURAL PLANS AND ELEVATIONS.
 - MECHANICAL AND ELECTRICAL TRADES SHALL WORK IN CONJUNCTION WITH ONE ANOTHER SO AS TO AVOID INTERFERENCES BETWEEN PIPING, DUCTWORK, CONDUIT, LIGHTING FIXTURES, ETC.
 - ELECTRICAL EQUIPMENT BEING REMOVED AND NOT BEING REUSED WILL BE STORED ON SITE AND REMAIN THE PROPERTY OF THE OWNER. ANY SUCH EQUIPMENT THE OWNER DOES NOT WISH TO RETAIN WILL BE REMOVED FROM SITE AND DISPOSED OF BY THIS TRADE.
 - REVIEW MECHANICAL AND ARCHITECTURAL DRAWINGS AND PROVIDE ON SITE INSPECTIONS TO DETERMINE FULL EXTENT OF PROJECT PRIOR TO SUBMITTING BID.
 - IN EVERY WIRING INSTALLATION, EACH CONDUCTOR SHALL BE IDENTIFIED WITH A LABEL WHEREVER IT IS TERMINATED.
 - ALL ELECTRICAL PANELS, DISCONNECT SWITCHES, TRANSFORMERS, ETC. SHALL HAVE LAMACOID LABELING.
 - LAMACOID LABELING SHALL CONTAIN THE FOLLOWING:
 - FIRST LINE: BUILDING DESIGNATION, TYPE, FLOOR LEVEL, PANEL NUMBER
 - SECOND LINE: FED FROM (NAME UPSTREAM DISTRIBUTION POINT)
 - THIRD LINE: VOLTAGE
 - FOURTH LINE: AMPERAGE
 - FIFTH LINE: NUMBER PHASES/WIRES.
 - ALL RECEPTACLES, SWITCHES, AND JUNCTION BOXES SHALL BE LABELED TO INDICATE WHAT PANEL IT IS FED FROM AND WHAT IS THE CIRCUIT NUMBER (EX. E005 CIR 2,4,6).
 - ALL INSTALLED EQUIPMENT SHALL BE FULLY ACCESSIBLE FOR MAINTENANCE PURPOSES AND SHALL HAVE A MINIMUM OF 1 M WORKING SPACE IN FRONT OF ANY REQUIRED ACCESS DOORS OR PANELS.

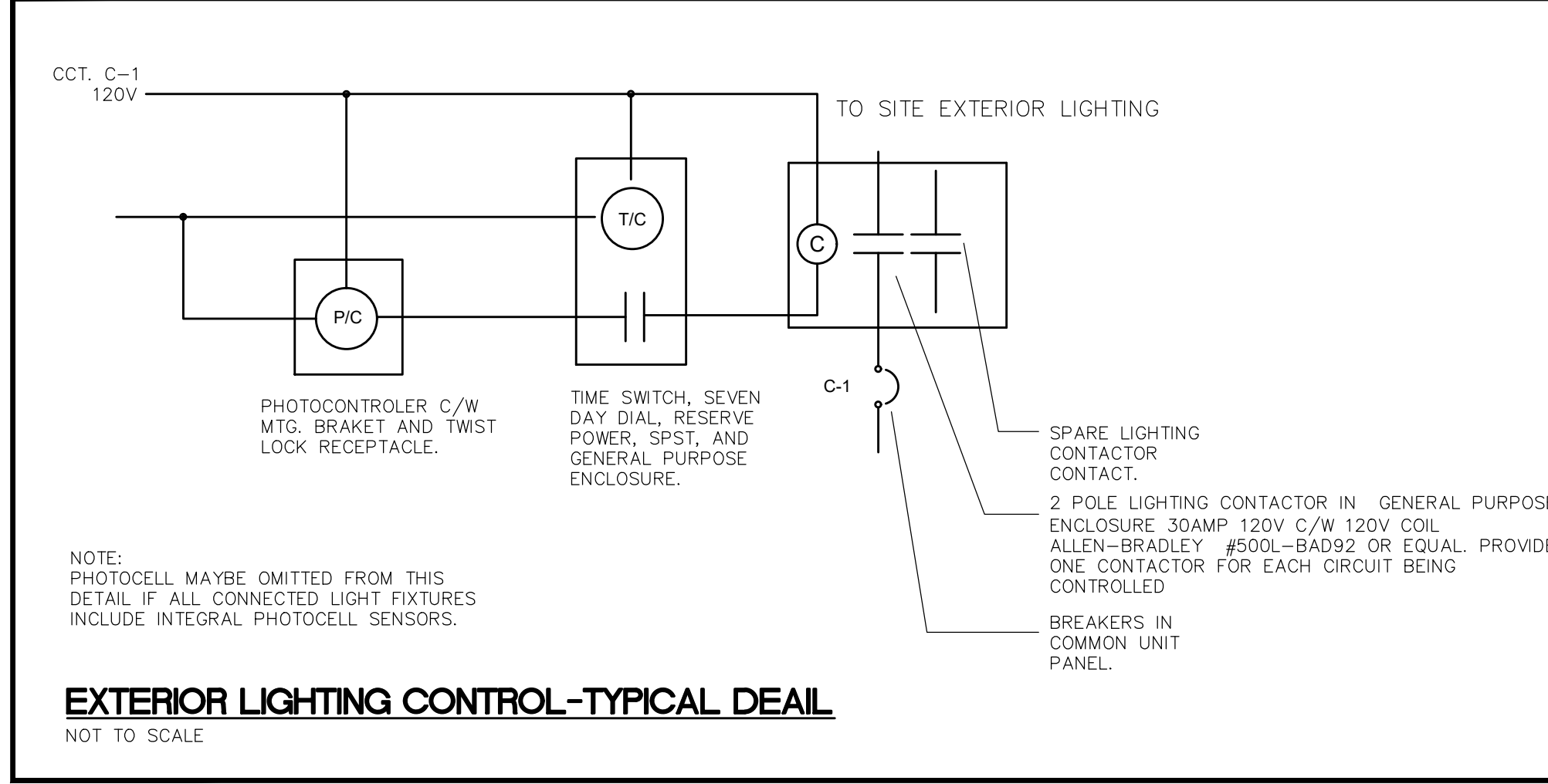
ELECTRICAL DRAWING LIST

E000	ELECTRICAL DRAWING LIST, LEGEND, SCHEDULES AND NOTE
E001	ELECTRICAL SPECIFICATIONS
E002	DEMOLITION AND NEW SITE PLANS

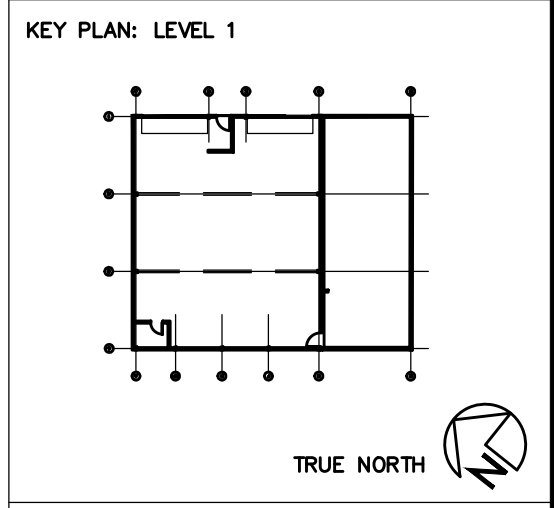
ELECTRICAL LEGEND

SYMBOL	DESCRIPTION	MTG HT
⌘	15A, 125V SINGLE POLE SWITCH, ⌘ ₂ (TWO POLE), ⌘ ₃ (3-WAY), ⌘ ₄ (4-WAY), ⌘ _x (KEY OPERATED), ⌘ _o (DIMMER), ⌘ _o C/W PILOT LIGHT), ⌘ _o (LOW VOLTAGE), ⌘ _t (TIMER), ⌘ _s (OCCUPANCY SENSOR SWITCH), ⌘ (SINGLE GANG), ⌘ (DOUBLE GANG), ⌘ (TRIPLE GANG), ⌘ (FOUR GANG), ⌘ (FIVE GANG), ⌘ (SIX GANG)	1100 (43")
□	LED FIXTURE	
□	WALL MOUNTED LED FIXTURE	AS NOTED
○	LED PENDANT OR DOWNLIGHT FIXTURE	AS NOTED
○	DIRECTIONAL/AIMED LED FIXTURE	AS NOTED
□	WALL MOUNTED LED FIXTURE	AS NOTED
○	POLE MOUNTED FIXTURE	
▨	CROSS-HATCHED OR SHADED FIXTURE INDICATES CONNECTED TO EMERGENCY (ESSENTIAL) POWER	
□	DISCONNECT SWITCH	1270 (50")
□	COMBINATION STARTER AND DISCONNECT	1170 (46")
□	MAGNETIC MOTOR STARTER	(46")
□	MANUAL MOTOR STARTER	1270 (50")
○	MOTOR CONNECTION (SINGLE OR THREE PHASE)	
○	MOTOR/DISCONNECT CONNECTION (SINGLE OR THREE PHASE)	
■	ELECTRICAL PANEL	
○	OCCUPANCY SENSOR	CEILING
⊖	15AMP(20AMP WHERE NOTED) 125VOLT U-GROUND DUPLEX REC.	457 (18")
□	SINGLE PUSH-BUTTON STATION	1100 (43")
○	SPECIAL RECEPTACLE	AS NOTED
●	DIRECT CONNECTION	AS NOTED
▽	VOICE/DATA OUTLET C/W CONDUIT TO ACCESSIBLE CEILING SPACE	457 (18")
▽	DATA OUTLET C/W CONDUIT TO ACCESSIBLE CEILING SPACE	(18")
▽	TELEPHONE OUTLET C/W CONDUIT TO ACCESSIBLE CEILING SPACE	AS NOTED
HDMI	HDMI OUTLET	AS NOTED
GF	GROUND FAULT INTERRUPTING	
OC	OVER COUNTER	
FR	FRIDGE	
DW	DISH WASHER	
CL	CEILING MOUNTED	
MW	MICROWAVE	
PC	PHOTO SENSOR	
TC	TIME CLOCK	
LV	LOW VOLTAGE	
M	ELECTRICAL METER	
J	JUNCTION BOX	
T	THERMOSTAT	
EXIT	EXIT SIGN	
EXIT	SINGLE SIDED EXIT SIGN	
→	EXIT LIGHT - DIRECTIONAL ARROW	
EB...	EMERGENCY LIGHTING BATTERY UNIT	
☞	SINGLE HEAD REMOTE EMERGENCY LIGHT	
☞☞	DOUBLE HEAD REMOTE EMERGENCY LIGHT	
☞	CCTV CAMERA C/W CONDUIT TO RECEIVER	
⊙	HEAT DETECTOR	CEILING
KP	KEY PAD	1168 (46")
MD	MOTION DETECTOR	

NOTE: ALL NEW DEVICES SHOWN IN BOLD



- ### DEMOLITION NOTES
- ELECTRICAL SYSTEMS SHOWN ON DEMOLITION PLANS ARE BASED ON INFORMATION OBTAINED FROM ORIGINAL CONSTRUCTION CONTRACT/TENDER DOCUMENTS. THESE DRAWINGS ARE NOT BASED ON "AS-BUILT RECORDS" OR ON EXHAUSTIVE FIELD MEASUREMENT AND ARE PROVIDED TO ASSIST THE CONTRACTOR IN DETERMINING THE EXTENT OF WORK REQUIRED. THE CONTRACTOR SHALL MAKE ALLOWANCE IN THEIR TENDER PRICE FOR THE REMOVAL OF ADDITIONAL 10% ABANDONED SERVICES AND THE PROTECTION OF EXISTING SERVICES THAT MUST REMAIN. RECORD THE LOCATION OF ALL EXISTING SERVICES THAT REMAIN ON AS-BUILT RECORD DRAWINGS.
 - ELECTRICAL DRAWINGS DO NOT IDENTIFY EVERY ELECTRICAL EQUIPMENT SUCH AS LIGHTING, RECEPTACLES, SWITCHES, SYSTEMS DEVICES ETC. IN EXISTING AREAS OF DEMOLITION AND WHERE RENOVATIONS WILL TAKE PLACE. CONTRACTOR PERFORMING THE WORK SHALL VISIT SITE PRIOR TO SUBMITTING BIDS AND CONFIRM ALL ELECTRICAL EQUIPMENT IN THESE AREAS AND INCLUDE FOR DISCONNECTION AND REMOVAL OF ALL EQUIPMENT IN AREA OF RENOVATION, UNLESS NOTED OTHERWISE.
 - EXISTING ACTIVE SERVICES THAT ARE ROUTED THROUGH AREA OF CONSTRUCTION TO SERVICE OTHER AREAS ARE TO BE IDENTIFIED AND MAINTAINED OPERATIONAL.
 - REFER TO MECHANICAL DRAWINGS FOR DEMOLITION ASSOCIATED WITH MECHANICAL EQUIPMENT. DISCONNECT AND REMOVE ASSOCIATED POWER WIRING AND CONDUIT IN ITS ENTIRETY.
 - CONTRACTOR SHALL DISCONNECT, REMOVE AND REINSTALL LIGHTING AND ELECTRICAL DEVICES AS REQUIRED FOR MECHANICAL RENOVATIONS. RELOCATE AND RE-ROUTE ELECTRICAL SERVICES AS REQUIRED.



CONTRACTOR SHALL CHECK AND VERIFY ALL DIMENSIONS AND REPORT ANY DISCREPANCIES TO THE ARCHITECT BEFORE PROCEEDING WITH THE WORK.
DO NOT SCALE DRAWINGS.

REVISIONS

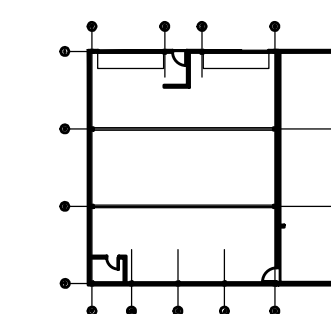
NO.	DESCRIPTION	DATE
1	SITE PLAN APPROVAL	2022-10-19

LICENSED PROFESSIONAL ENGINEER
S. L. BARR
Oct 19 2022
PROVINCE OF ONTARIO

NOT BE USED FOR CONSTRUCTION PURPOSES UNTIL SIGNED BY THE ARCHITECT.

DATE: _____
DRAWN: AF
CHECKED: SB
DATE PRINTED: 2021-06-25

KEY PLAN: LEVEL 1

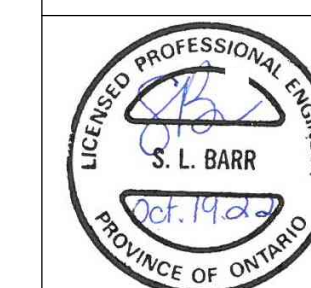


TRUE NORTH

CONTRACTOR SHALL CHECK AND VERIFY ALL DIMENSIONS AND REPORT ANY DISCREPANCIES OR DISCREPANCIES TO THE ARCHITECT BEFORE PROCEEDING WITH THE WORK.
DO NOT SCALE DRAWINGS.

REVISIONS

NO.	DESCRIPTION	DATE
1	SITE PLAN APPROVAL	2022-10-19



NOT BE USED FOR CONSTRUCTION PURPOSES UNTIL SIGNED BY THE ARCHITECT.

DATE

PROJECT NORTH
DRAWN: AF
CHECKED: SB
DATE PRINTED: 2021-06-25

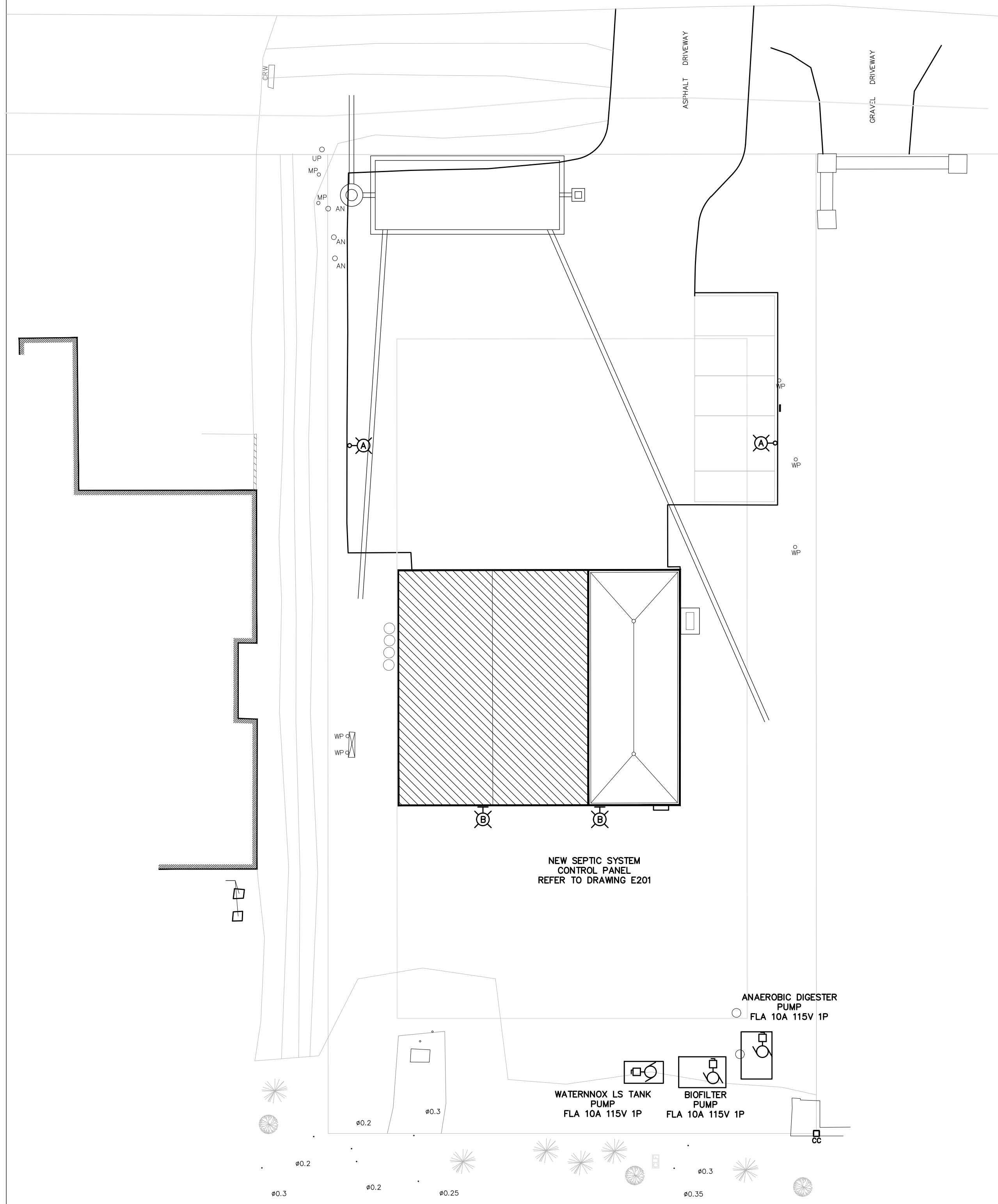
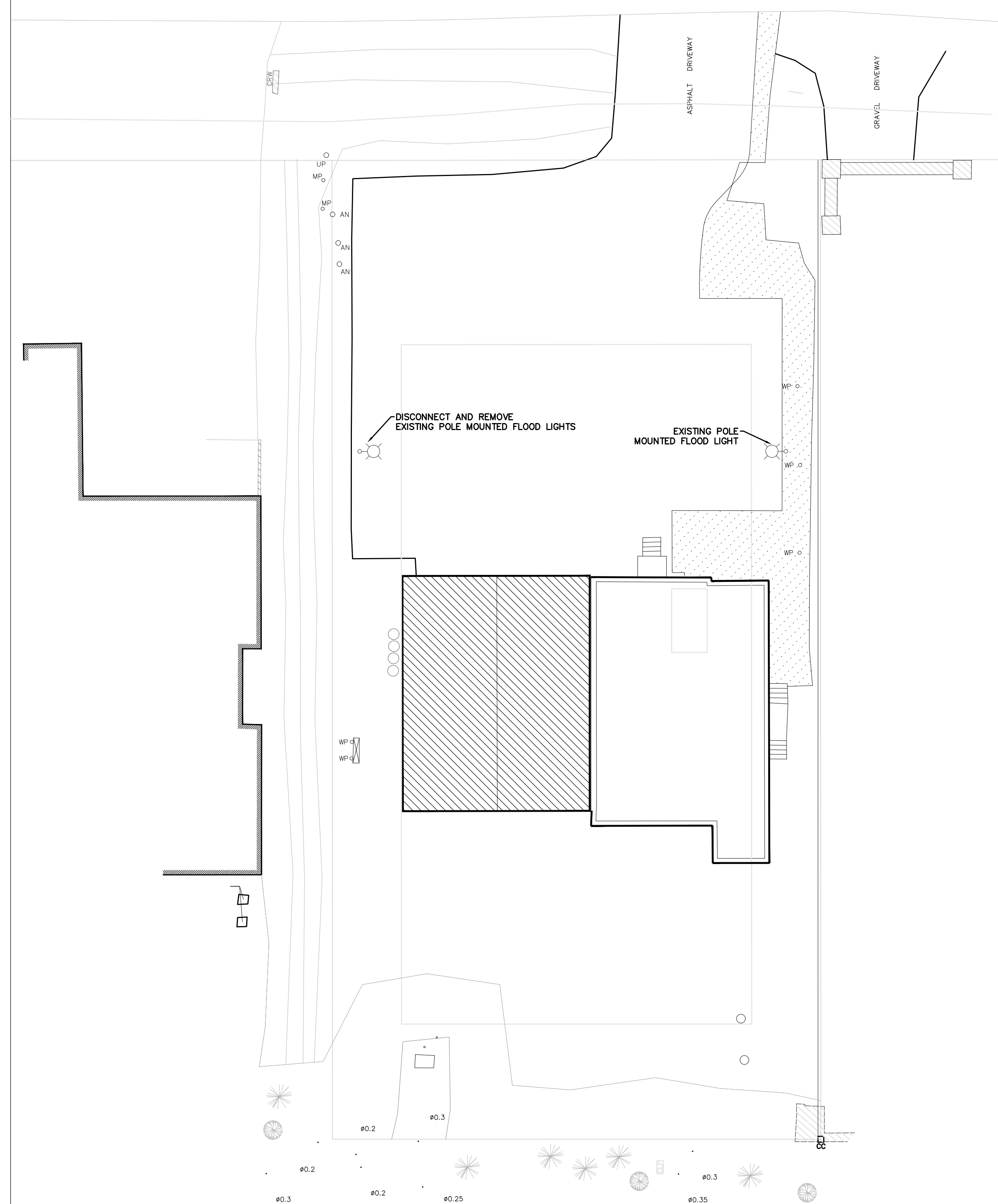
CARDEVCO WAREHOUSE

ADDRESS: 145 CARDEVCO ROAD, GANF OX, K2K 3B8
DRAWING TITLE

KEY PLANS

SCALE: AS SHOWN
PROJECT NO: 039-21
DRAWING NO: E-002

- NOTES:**
1. PROVIDE NEW LIGHTING AS INDICATED IN BOLD.
 2. CONNECT NEW EQUIPMENT AS INDICATED IN BOLD.



1 ELECTRICAL DEMOLITION SITE PLAN
E002 1/16"=1'-0"

2 ELECTRICAL NEW SITE PLAN
E002 1/16"=1'-0"