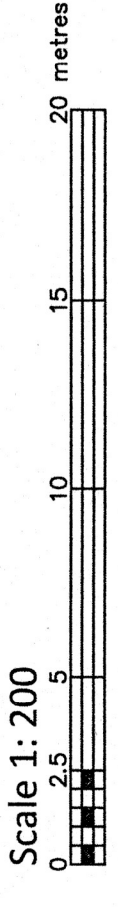


**TOPOGRAPHIC PLAN OF SURVEY OF
PART OF BLOCKS 19 & 23
REGISTERED PLAN 4M-356
CITY OF OTTAWA**
FARLEY, SMITH & DENIS SURVEYING LTD. 2022



Metric Note
Distances and coordinates on this plan are in metres and can be converted to feet by dividing by 0.3048.

Bearing Note
Bearings and bearings derived from the Canadian Real Time Network and are referred to the Central Meridian of NAD 83 (West Longitude) (Nad-83) (Original).

For bearing comparisons, a rotation of 0°29'00" counter-clockwise was applied to the bearings on P1 & P2.
For bearing comparisons, a rotation of 0°18'50" counter-clockwise was applied to bearings on P4.

Elevation Notes
Elevations shown are geodetic and are referred to Geodetic Datum CGVD-9288.
Elevations derived from Vertical Benchmark 001197004242 having a published elevation of 114.689.
It is the responsibility of the user of this information to verify that the job benchmark has not been altered or disturbed and that its relative elevation and description agrees with the information shown on this drawing.

Utility Notes
1. This drawing cannot be accepted as acknowledging all of the utilities and it will be the responsibility of the user to contact the respective utility authorities for confirmation.
2. Confirmed surface utilities were located.
3. A field location of underground plant by the pertinent utility authority is mandatory before any work involving breaking ground, probing, excavating etc.

Notes & Legend

- Denotes**
- Survey Monument Planted
 - Standard Iron Bar
 - Standard Iron Nail
 - Witness
 - Measured
 - Registered Plan 4M-356
 - Plan 4R-32072
 - Plan 4R-7616
 - Overhead Wires
 - Utility Pole Anchor
 - Light Standard
 - Galvanized Steel Pipe
 - Gas Meter
 - Valve
 - Air Terminal Box Sign
 - Air Conditioner
 - Meter
 - Security Chain Link Fence
 - Metal Fence
 - Chain Link Fence
 - Invert
 - Stone Retaining Wall
 - Top of Pipe
 - Upright
 - Top of Foundation
 - Centreline Elevations
 - Top of Wall Elevation
 - Property Line

Deciduous Tree - The Symbol shown denotes location and trunk diameter only. Size of its root system/overhead canopy may be smaller/larger than the symbol size depicted on this plan.



Revision Note

Revised to show reference to MTM Zone 18 NAD83 (Original).
And to add the well definition to the legend.
M 02/2023
Date
Emad Alrefaai
Ontario Land Surveyor

Revision Note

Revised to show the distance from the property line to the centerline of travelled road.
Aug 24, 2022
Date
Emad Alrefaai
Ontario Land Surveyor

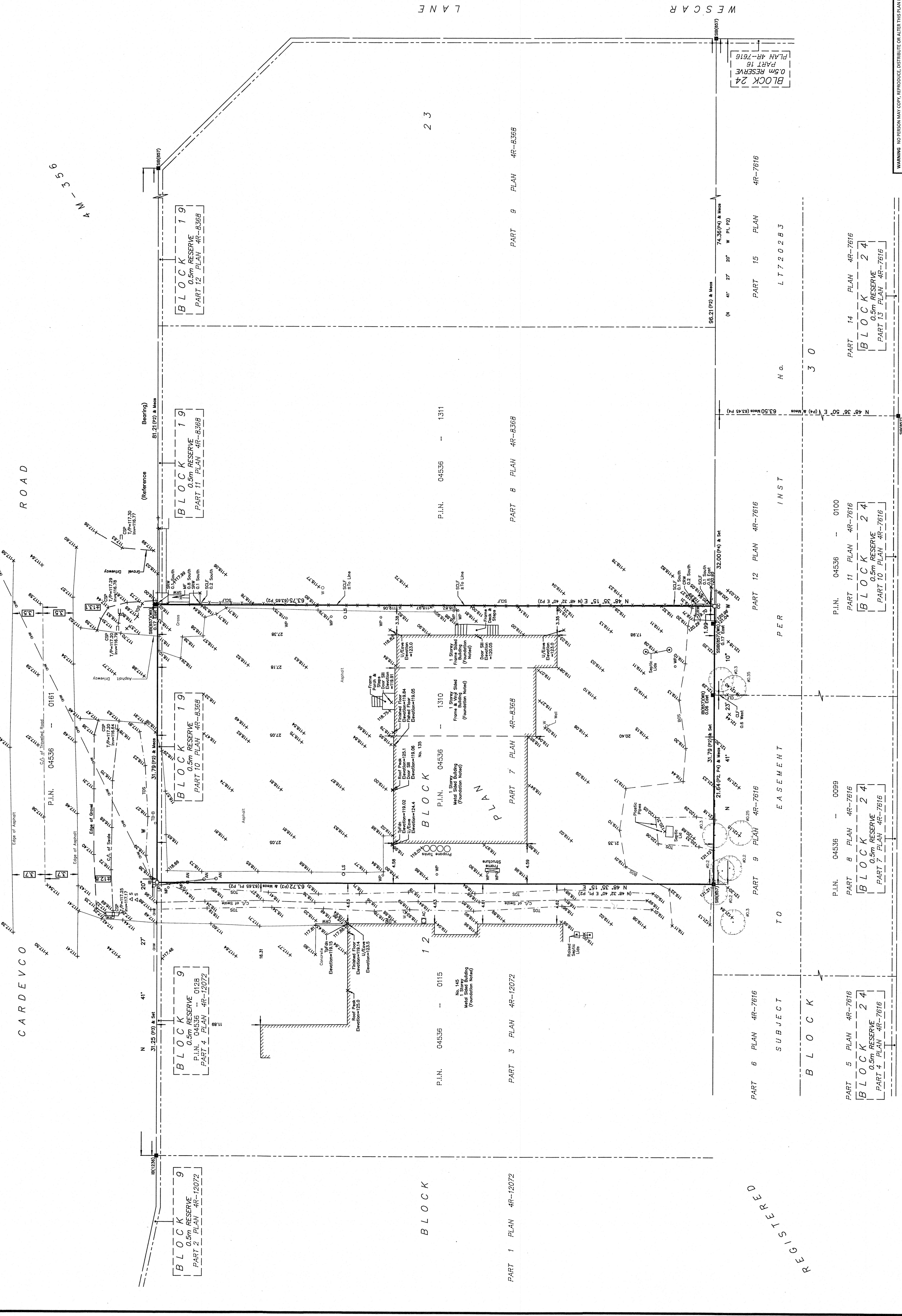
Surveyor's Certificate

This drawing is a true and correct copy of the original and in accordance with the Surveyors Act, the Regulations made under them.
The survey was completed on the 13th day of May, 2021.

ASSOCIATION OF ONTARIO LAND SURVEYORS
PLAN SUBMISSION FORM
V-10969

THIS PLAN IS UNLAWFUL IN THE PROVINCE OF ONTARIO IN ACCORDANCE WITH REGULATION 1016, SECTION 28(1).

ONTARIO LAND SURVEYORS
CANADA LAND SURVEYORS
190 COLONNADE ROAD, OTTAWA, ONTARIO K2E 7J5
TEL: (613) 727-8226 FAX: (613) 727-1826



WARNING NO PERSON MAY COPY, REPRODUCE, DISTRIBUTE OR ALTER THIS PLAN IN ANY MANNER WITHOUT THE WRITTEN PERMISSION OF FARLEY, SMITH & DENIS SURVEYING LTD.

FILE No.: 169-23