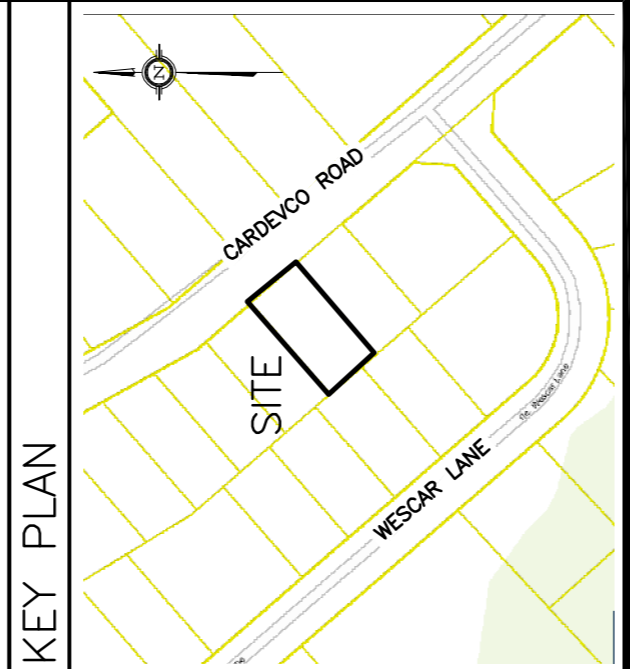


LEGEND

FFL	FINISHED FLOOR ELEVATION
TOF	TOP OF FOUNDATION
USF	UNDERSIDE OF FOOTING
- - -	PROPERTY LINE
CB	CATCH-BASIN
MH	STORM MANHOLE
ST	STORM SEWER
INV	INVERT OF PIPE
+	EXISTING GRADE ELEVATION
+	PROPOSED GRADE ELEVATION
Z%	EXISTING SLOPE OF GRADE
Z%	PROPOSED SLOPE OF GRADE
↑	EMERGENCY OVERLAND FLOW
T.O.S.	TOP OF SLOPE
B.O.S.	BOTTOM OF SLOPE
—	CENTERLINE OF SWALE
—	SILT FENCE BARRIER
●	ROOF DRAIN
▨	LIGHT-DUTY PAVEMENT
▩	HEAVY-DUTY PAVEMENT
...	LANDSCAPE



No.	DATE	REVISION
5	OCT 11-24	RE-ISSUED FOR APPROVAL
4	JUN 9-23	RE-ISSUED FOR APPROVAL
3	NOV 24-22	ISSUED FOR APPROVAL
2	NOV 15-22	ISSUED FOR COORDINATION
1	SEP 12-22	PRELIMINARY

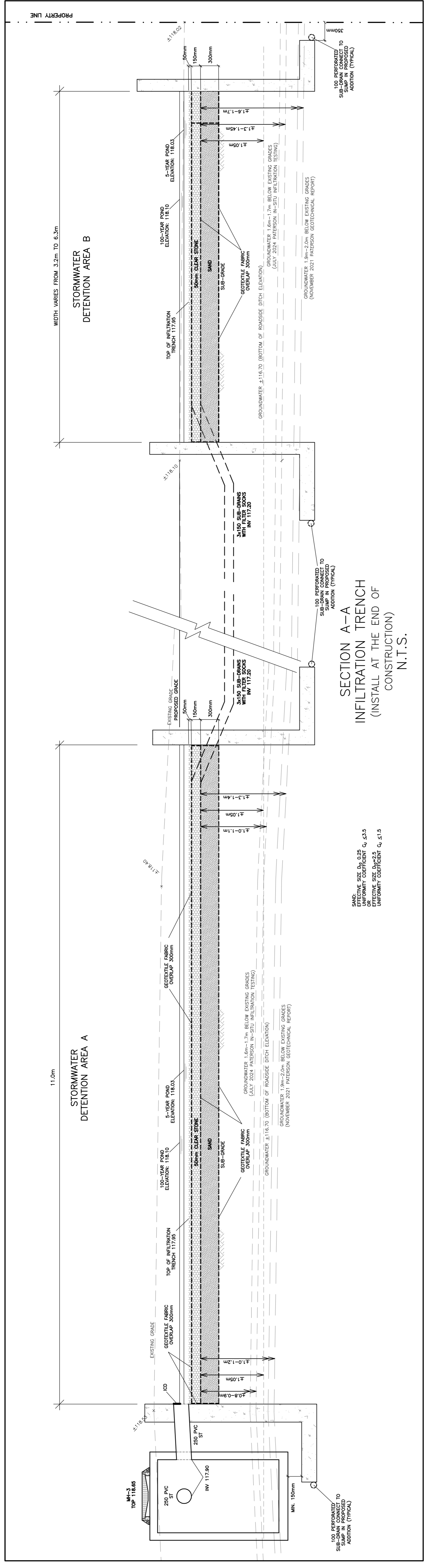
D. B. GRAY ENGINEERING INC.
 Professional Engineer - Ontario
 700 Long Point Circle
 Ottawa, Ontario
 613-425-8044
 d.gray@dbgrayengineering.com

Project
PROPOSED ADDITION
135 CARVECCO ROAD
 OTTAWA, ONTARIO

Drawing Title
DETAILS

Engineer's Seal

 Drawn: D.B.G. Scale: 1:100
 H. Scale: 1:100
 V. Scale: 1:100
 Date: SEP 12-22
 Job No.: 21081
 Drawing No.: C-3
 of 4
 NOT VALID UNLESS SIGNED & DATED



CATCH-BASIN & MANHOLE SCHEDULE

REF	TOP	SIZE	TYPE	INVERT AT INLET	INVERT AT OUTLET	NOTES
CB-1	117.95	600mm x 600mm	PRECAST CONCRETE CATCH-BASIN	-	117.22	TO OFSD 705.010 & CITY OF OTTAWA STANDARDS - FRAME & COVER TO CITY OF OTTAWA DRAWING NO. S19
MH-2	118.02	1500mm	PRECAST CONCRETE MANHOLE	117.20(SW)	117.20 (6x150 SUB-DRAINS)	TO OFSD 701.010 & CITY OF OTTAWA STANDARDS - FRAME & COVER TO CITY OF OTTAWA DRAWING NO. S25 & S24.1 OR OFSD 401.010
MH-3 (OCS)	118.65	CDS PMSU2015-4	PRECAST CONCRETE MANHOLE (OIL GRIT SEPARATOR)	117.90(SE)	117.90(NE)	TO OFSD 701.010 & CITY OF OTTAWA STANDARDS - FRAME & COVER TO CITY OF OTTAWA DRAWING NO. S25 & S24.1 OR OFSD 401.010 AS REQUIRED BY CDS

