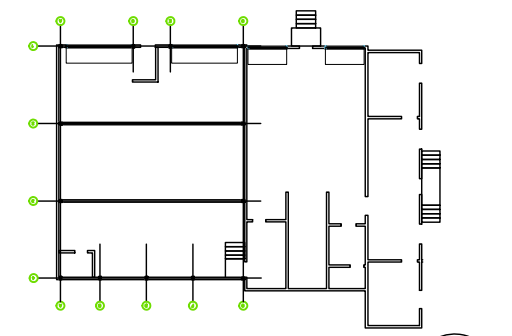


KEY PLAN: LEVEL 1

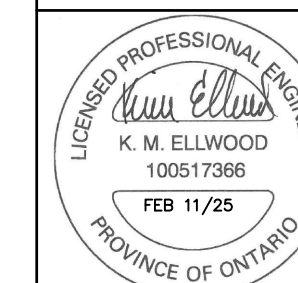


TRUE NORTH

CONTRACTOR SHALL CHECK AND VERIFY ALL DIMENSIONS AND REPORT ANY OMISSIONS OR DISCREPANCIES TO THE ARCHITECT BEFORE PROCEEDING WITH THE WORK.
DO NOT SCALE DRAWINGS.

REVISIONS

NO.	DESCRIPTION	DATE
1	ISSUED FOR REVIEW	JAN 04/24
2	RE-ISSUED FOR PERMIT	MAY 06/24
3	ISSUED FOR SITE PLAN CONTROL	JUNE 18/24
4	RE-ISSUED FOR SITE PLAN CONTROL	OCT 25/24
5	RESPONSE TO CITY COMMENTS SPC_R03	FEB 11/25



PROJECT NORTH
DRAWN: W. ARSENAULT
CHECKED: A.R./K.E.
DATE PRINTED:

CARDEVO
WAREHOUSE

ADDRESS: 129 John Goreway Dr., Corp., ON N2A 1J5
DRAWING TITLE:

STORMWATER
DETENTION RETAINING
WALL DETAILS

SCALE: AS SHOWN
PROJECT NO.:
DRAWING NO.:
S300

STORMWATER DETENTION AREA B

REFER TO DETAIL 6/S300 FOR
REBAR AT PENETRATION
THROUGH CONCRETE WALL.

PROVIDE AN ADDITIONAL
15M @ TOP OF WALL
(TYP.)

15M @ 250mm o.c.
VERT. & HORIZ.

15M @ 250mm
o.c. DOWELS

2-15M RUNNING PARALLEL TO
FOOTING & 15M @ 250mm o.c.
WITH HOOKS ON THE END
RUNNING PERPENDICULAR TO
THE FOOTING

5 SECTION: STORMWATER DETENTION B

S300 SCALE 3/8"=1'-0"

STORMWATER DETENTION AREA A

15M @ 250mm o.c.
VERT. & HORIZ.

PROVIDE OPENINGS IN RETAINING
WALL TO ACCOMMODATE 250
OUTLET PIPE. REFER TO DETAIL
6/S300 FOR ADDITIONAL
REINFORCING.

5-15M RUNNING PARALLEL TO
FOOTING & 15M @ 250mm o.c.
WITH HOOKS ON THE END
RUNNING PERPENDICULAR TO
THE FOOTING

3 SECTION: STORMWATER DETENTION A

S300 SCALE 3/8"=1'-0"

6 SECTION: SLEEVES THROUGH RETAINING WALL

S300 SCALE 3/8"=1'-0"

STORMWATER DETENTION AREA B

15M @ 250mm o.c.
VERT. & HORIZ.

PROVIDE OPENINGS IN
RETAINING WALL TO
ACCOMMODATE
PERFORATED
SUB-DRAINS. REFER TO
DETAIL 6/S300 FOR
ADDITIONAL
REINFORCING.

5-15M RUNNING PARALLEL TO
FOOTING & 15M @ 250mm o.c.
WITH HOOKS ON THE END
RUNNING PERPENDICULAR TO
THE FOOTING

4 SECTION: STORMWATER DETENTION B

S300 SCALE 3/8"=1'-0"

STORMWATER DETENTION AREA A

15M @ 250mm o.c.
VERT. & HORIZ.

REFER TO DETAIL 6/S300
FOR REBAR AT
PENETRATION THROUGH
CONCRETE WALL

5-15M RUNNING PARALLEL TO
FOOTING & 15M @ 250mm o.c.
WITH HOOKS ON THE END
RUNNING PERPENDICULAR TO
THE FOOTING

2 SECTION: STORMWATER DETENTION A

S300 SCALE 3/8"=1'-0"

APPROVED
By Adam Brown at 9:43 am, May 25, 2025

ADAM BROWN
MANAGER, DEVELOPMENT REVIEW - RURAL
PLANNING, REAL ESTATE & ECONOMIC DEVELOPMENT
DEPARTMENT, CITY OF OTTAWA

1 PLAN: STORMWATER DETENTION AREAS

S300 SCALE 1/8"=1'-0"