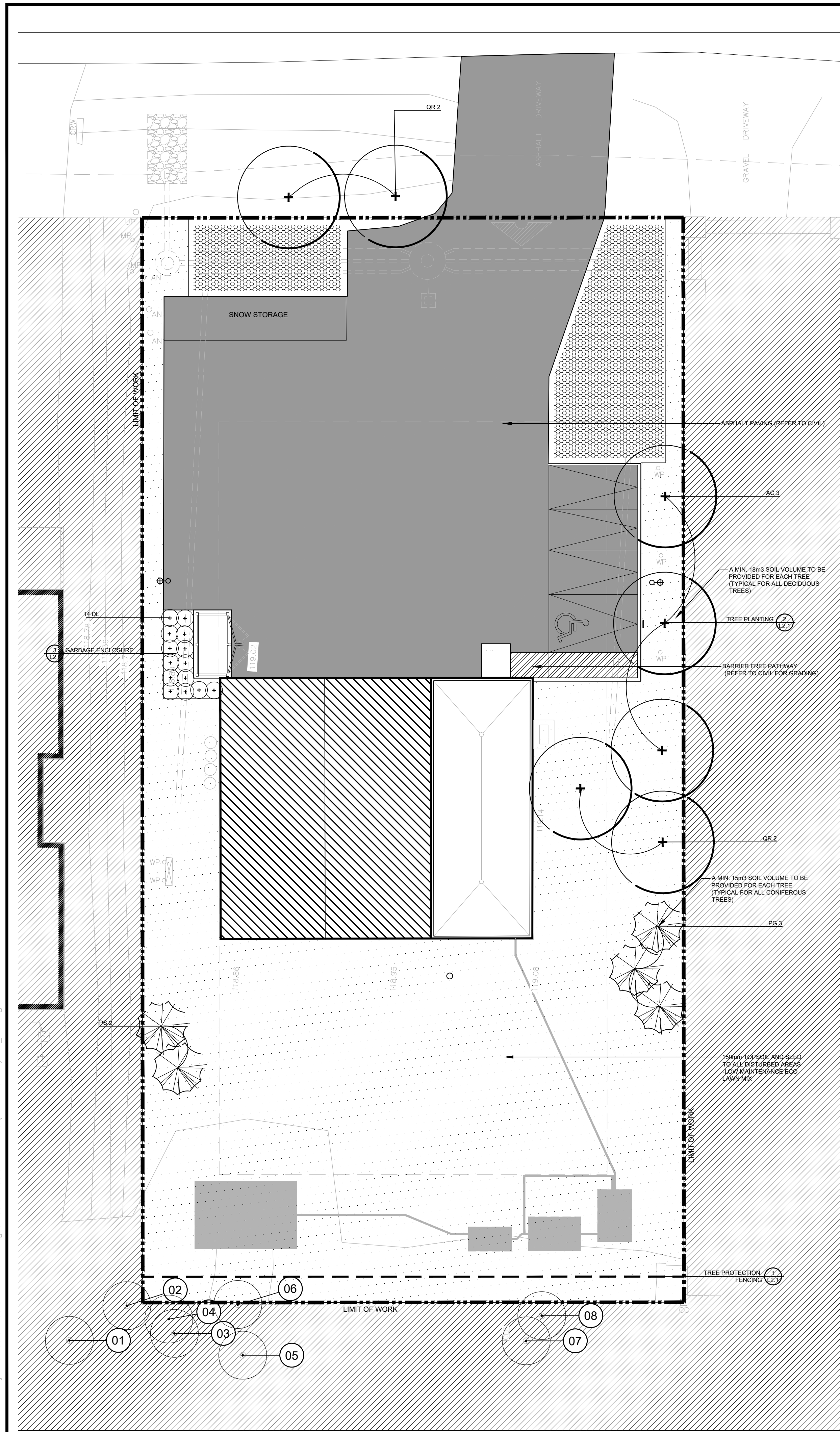


Label Save: 2024-05-10 10:27:46 AM
 File Location: Z:\Projects\2138-01 135 Cardevco (Landscape)\SPA_R3.dwg

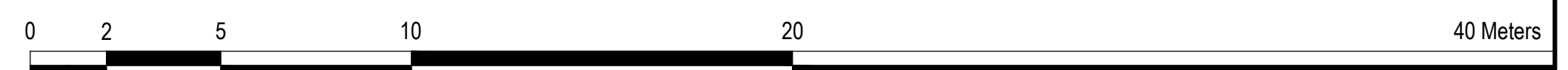


Tree #	Botanical Name	Common Name	DBH (cm)	Ownership	Condition	Comments	Arborist Recommendation	Removal Reason
1	Populus Tremuloides	Trembling Aspen	30	Private	Good	Symmetrical canopy, Die back-5%-Single Stem	Remain	
2	Populus Tremuloides	Trembling Aspen	20	Private	Good	Symmetrical canopy-Single Stem	Remain	
3	Populus Tremuloides	Trembling Aspen	20	Private	Good	Asymmetrical canopy-Single Stem	Remain	
4	Populus Tremuloides	Trembling Aspen	20	Private	Good	Asymmetrical canopy-Single Stem	Remain	
5	Populus Tremuloides	Trembling Aspen	25	Private	Poor	Symmetrical canopy, Die back-90%-broken limbs, Single stem	Remain	
6	Populus Tremuloides	Trembling Aspen	30	Private	Good	Symmetrical canopy, Die back 10%-Single Stem, Co-dominant leaders 2 @ 10 m above grade	Remain	
7	Populus Tremuloides	Trembling Aspen	35	Private	Moderate	Symmetrical canopy, Die back- 5%, Single Stem, Decay at trunk, leaning	Remain	
8	Populus Tremuloides	Trembling Aspen	30	Private	Good	Symmetrical canopy, Single Stem,	Remain	

PLANT LIST					
SYM.	BOTANICAL NAME	COMMON NAME	QTY.	SIZE	REMARKS
DECIDUOUS TREES					
AC	ACER FREEMANII 'JEFFERSRED'	AUTUMN BLAZE FREEMAN MAPLE	3	1800mm HT.	B&B / W.B. MULTI-STEM
QR	QUERCUS RUBRA	RED OAK	4	1800mm HT.	B&B / W.B. MULTI-STEM
CONIFEROUS TREES					
PG	PICEA GLAUCA	WHITE SPRUCE	3	1800mm HT.	B&B / W.B.
PS	PINUS STROBUS	WHITE PINE	2	1800mm HT.	B&B / W.B.
SHRUBS					
DL	DIERVILLA LONICERA	BUSH-HONEYSUCKLE	14	500mm HT.	POT. 1000mm O.C.

LEGEND

- DECIDUOUS TREE
- CONIFEROUS TREE
- SHRUBS
- EXISTING TREE TO BE RETAINED
- ASPHALT PAVING (REFER TO CIVIL)
- BARRIER-FREE PATHWAY
- CONCRETE PAVING (REFER TO CIVIL)
- (ALL OTHER DISTURBED AREAS)
150mm TOPSOIL AND SEED
-LOW MAINTENANCE ECO
LAWN SEED MIXTURE
OSC 8340
- STORM WATER MANAGEMENT AREAS (REFER TO CIVIL)



D.B. Gray Engineering Inc.



Vanderweest & Ruthford Associates Inc.
Mechanical & Electrical Engineers
London Windsor Ottawa
www.vrinc.ca | 613-863-2100

No.	Revision	Date
5	RE-ISSUED FOR SPA SUBMISSION	10 MAY 2024
4	RE-ISSUED FOR SPA SUBMISSION	24 MAY 2023
3	RE-ISSUED FOR SPA SUBMISSION	16 NOV 2022
2	ISSUED FOR SPA SUBMISSION	28 OCT 2022
1	ISSUED FOR REVIEW	22 SEP 2022

North:

Stamp:

CSW Landscape Architecture
Urban Design
Site Planning
Recreation and Park Planning
Project Management

319 McRae Avenue, Suite 502, Ottawa, Ontario, K1Z 0B9
Tel: (613) 729-4536

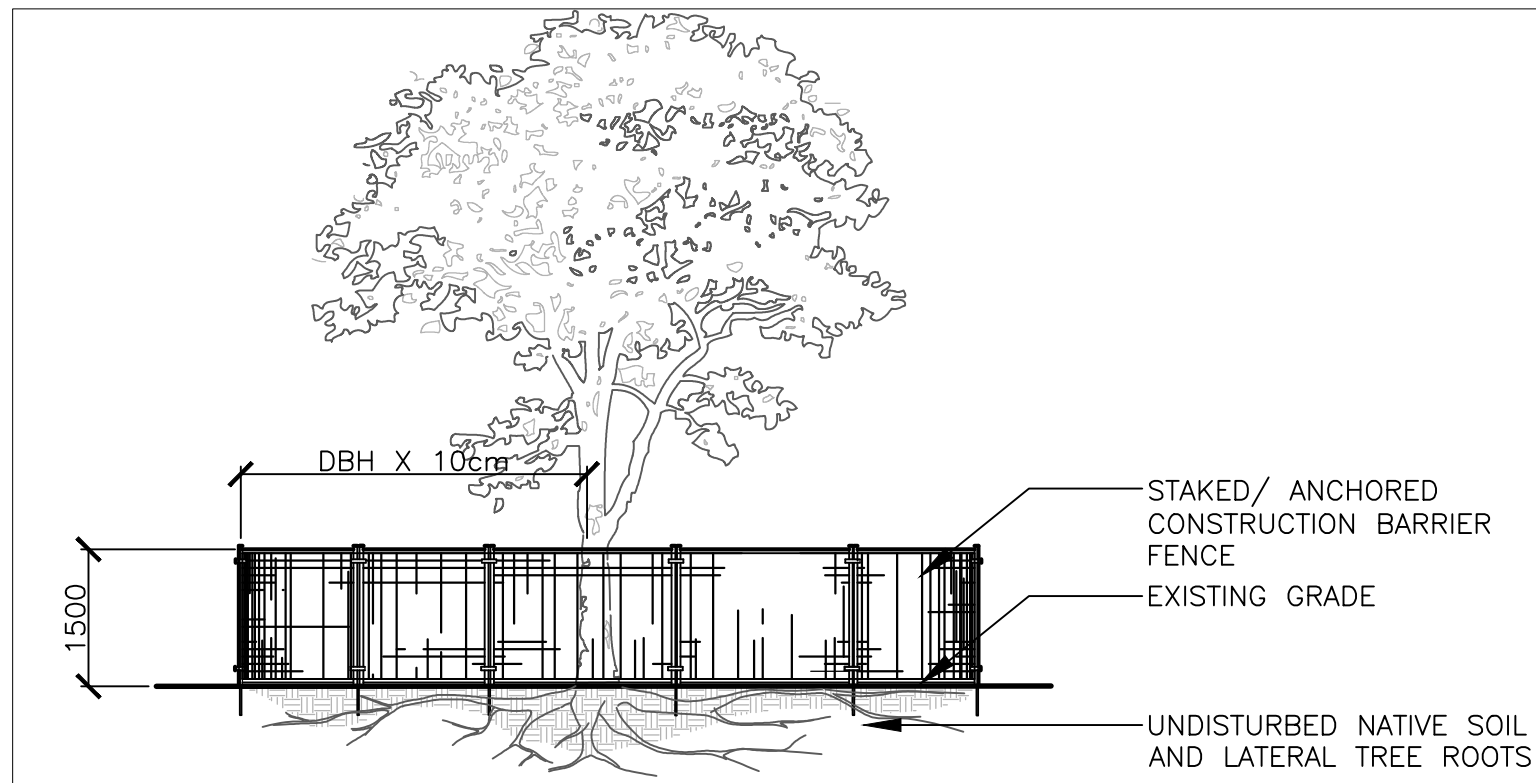
- All measurements in millimeters unless specified otherwise. Do not scale drawing. All drawings to be read in conjunction with written specifications.
- Copyright reserved. This drawing is the exclusive property of CSW Landscape Architects Ltd. and shall not be used without the consent thereof.
- This Drawing may not be used for construction until signed by the landscape architect. It is the responsibility of the contractor to:
 - check and verify all dimensions on site;
 - report all errors and/or omissions to the landscape architect;
 - comply with all pertinent codes and by-laws;
 - check and verify locations of all underground services with all local utilities prior to any digging.

Project:
135 CARDEVCO RD
135 CARDEVCO ROAD
CARP, ONTARIO

Drawing:
LANDSCAPE PLAN

Scale: 1:150	Date: SEPT 1, 2022
Design By: AB	Drawn By: AB
Project Number: 2138-01	Sheet Number: L 1.1

XXXXXX

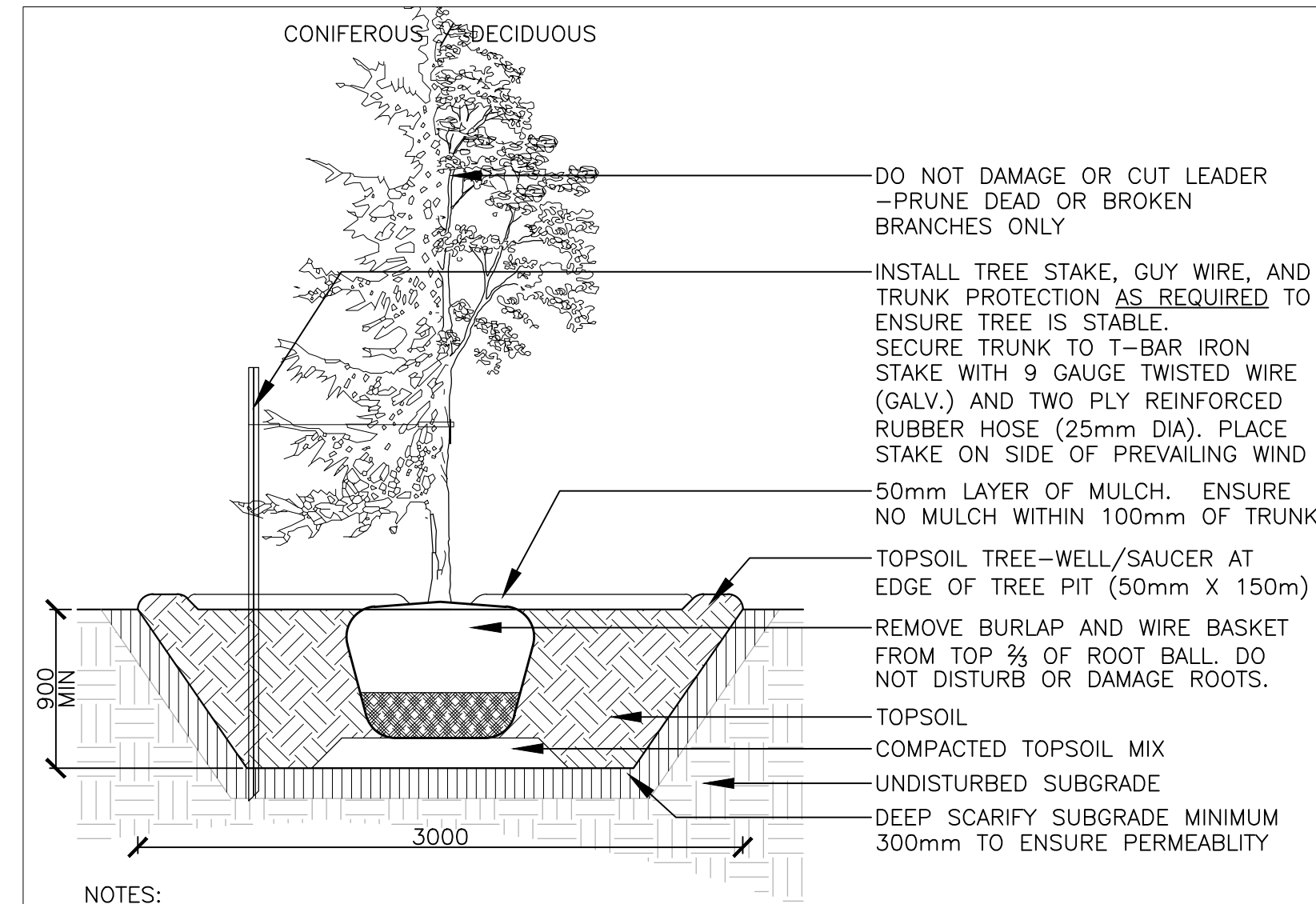


NOTES:

THE FOLLOWING PROTECTION MEASURES MUST BE IMPLEMENTED FOR RETAINED TREES, BOTH ON SITE AND ADJACENT SITES, PRIOR TO ANY TREE REMOVAL OR SITE WORKS AND MAINTAINED FOR THE DURATION OF CONSTRUCTION ON SITE.

1. UNDER THE GUIDANCE OF AN ARBORIST, ERECT A FENCE AT THE CRITICAL ROOT ZONE (CRZ) OF TREES WHERE THE CRZ IS ESTABLISHED AS BEING 10 CENTIMETERS FROM THE TRUNK FOR EVERY CENTIMETER OF TRUNK DIAMETER AT BREAST HEIGHT. THE CRZ IS CALCULATED AS DBH X 10cm.
2. DO NOT PLACE ANY MATERIAL OR EQUIPMENT WITHIN THE CRZ OF THE TREE
3. DO NOT ATTACH ANY SIGNS, NOTICES OR POSTERS TO ANY TREE
4. DO NOT RAISE OR LOWER THE GRADE WITHIN THE CRZ WITHOUT APPROVAL
5. TUNNEL OR BORE WHEN DIGGING WITHIN THE CRZ OF A TREE
6. DO NOT DAMAGE THE ROOT SYSTEM, TRUNK, OR BRANCHES OR ANY TREE
7. ENSURE THAT EXHAUST FUMES FROM ALL EQUIPMENT ARE NOT DIRECTED TOWARDS ANY TREE CANOPY

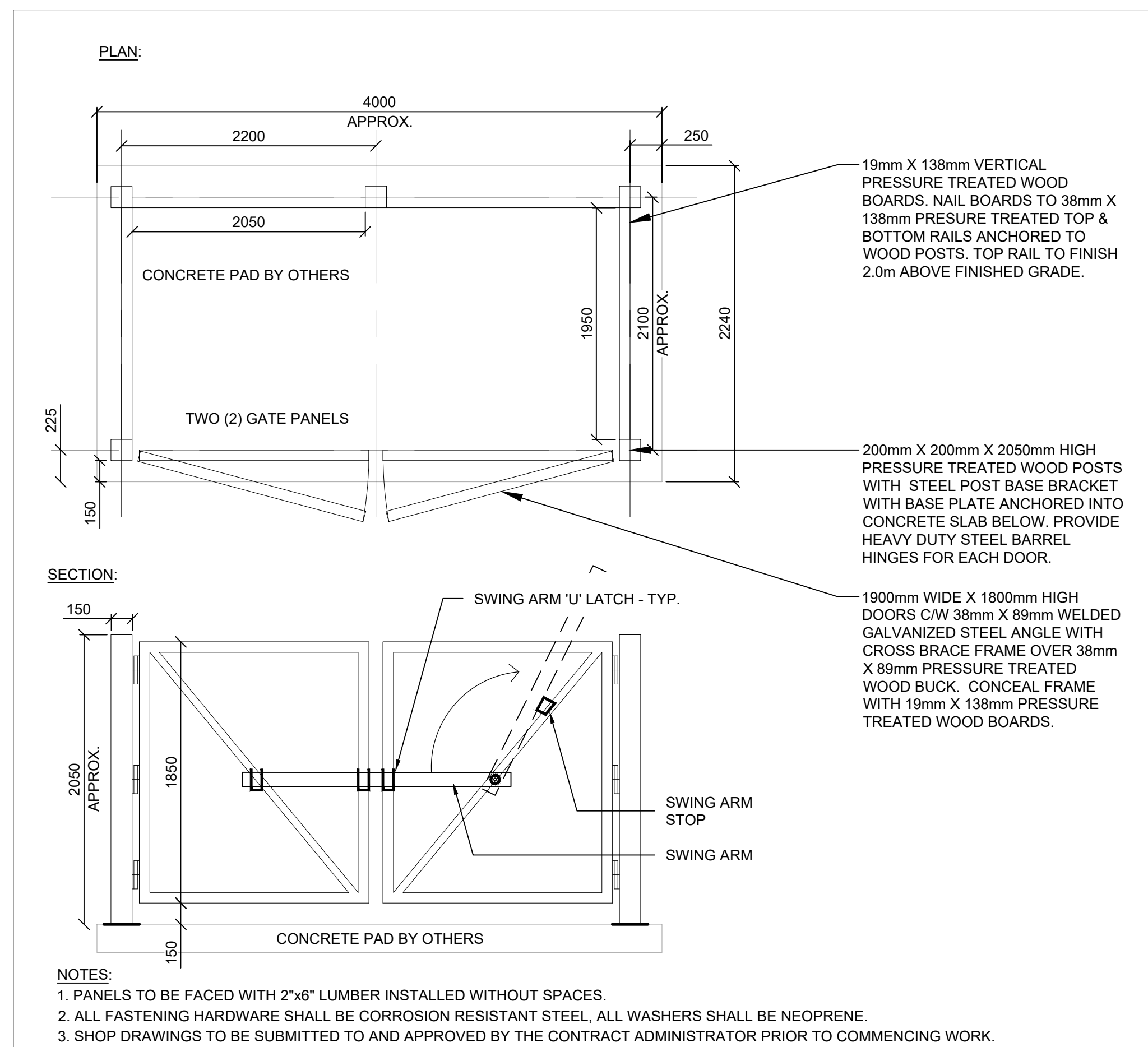
1 TREE PROTECTION FENCING Scale: 1:30



NOTES:

- TREE STAKES ARE GENERALLY ARE TO BE USED FOR CONDITIONS WHERE THE INSTALLED TREE IS UNSTABLE AND/OR BECOMES UNSTABLE
- ALLOW 10mm TO 25mm SLACK ON GUY WIRE SUPPORT FOR TREE
- TOP OF ROOT BALL TO RETAIN SAME ELEVATION AS GROWING CONDITIONS
- REMOVE STAKES ONE YEAR AFTER INSTALL
- INSTALL STAKE BEYOND EDGE OF ROOT BALL

2 TREE PLANTING Scale: 1:30



3 GARBAGE ENCLOSURE Scale: 1:30

No.	Revision	Date
5	RE-ISSUED FOR SPA SUBMISSION	10 MAY 2024
4	RE-ISSUED FOR SPA SUBMISSION	24 MAY 2023
3	RE-ISSUED FOR SPA SUBMISSION	16 NOV 2022
2	ISSUED FOR SPA SUBMISSION	28 OCT 2022
1	ISSUED FOR REVIEW	22 SEP 2022

North:

Stamp:

CSW Landscape Architecture
Urban Design
Site Planning
Recreation and Park Planning
Project Management

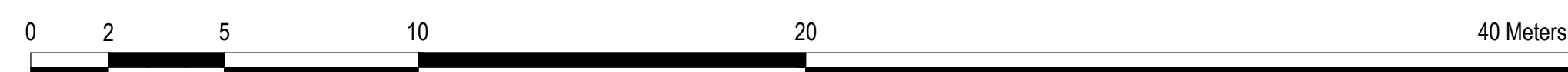
319 McRae Avenue, Suite 502, Ottawa, Ontario, K1Z 0B9
Tel: (613) 729-4536

1. All measurements in millimeters unless specified otherwise. Do not scale drawing. All drawings to be read in conjunction with written specifications.
2. Copyright reserved. This drawing is the exclusive property of CSW Landscape Architects Ltd. and shall not be used without the consent thereof.
3. This Drawing may not be used for construction until signed by the landscape architect. It is the responsibility of the contractor to:
 - check and verify all dimensions on site;
 - report all errors and/or omissions to the landscape architect;
 - comply with all pertinent codes and by-laws;
 - check and verify locations of all underground services with all local utilities prior to any digging.

Project:
135 CARDEVCO RD
135 CARDEVCO ROAD
CARP, ONTARIO

Drawing:
DETAILS

Scale: 1:150	Date: SEPT 1, 2022
Design By: AB	Drawn By: AB
Project Number: 2138-01	Sheet Number: L 2.1



XXXXXX