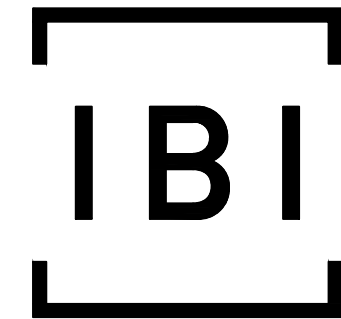
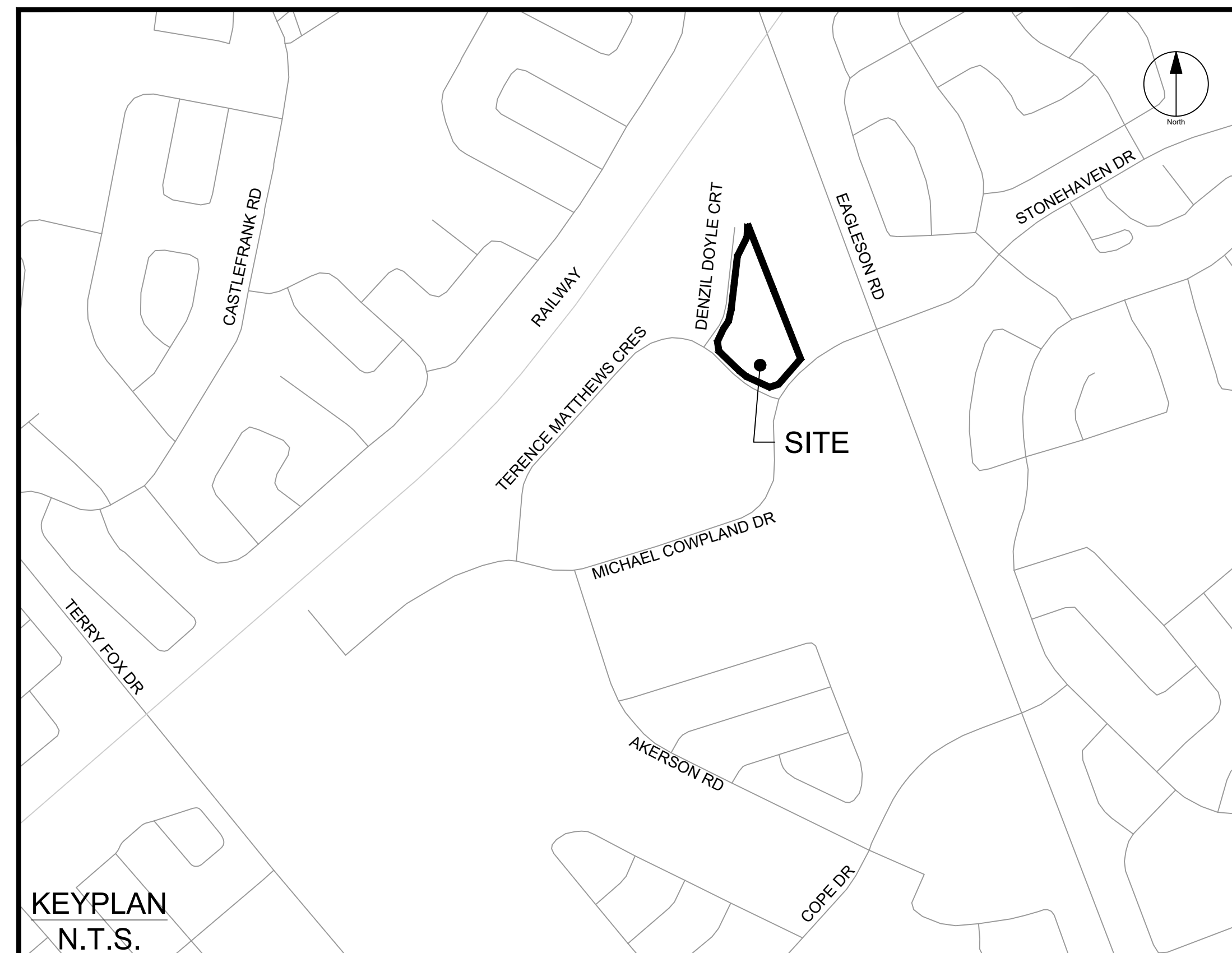


PROPOSED SELF STORAGE DEVELOPMENT HUNTINGTON PROPERTIES



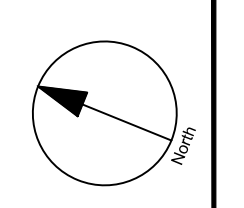
IBI GROUP
400 – 333 Preston Street
Ottawa ON K1S 5N4 Canada
tel 613 225 1311 fax 613 225 9868
ibigroup.com



**60 DENZEL DOYLE COURT
CITY OF OTTAWA**

CONTRACT NO. 135470

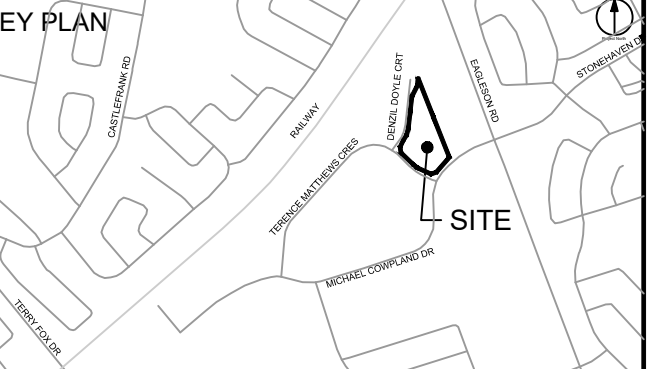
| Sheet List Table | |
|------------------|--------------------------|
| Sheet Number | Sheet Title |
| C-001 | GENERAL PLAN OF SERVICES |
| C-010 | DETAILS AND NOTES |
| C-011 | CROSS SECTIONS |
| C-200 | GRADING PLAN |
| C-500 | STORM DRAINAGE AREA PLAN |
| C-600 | PONDING PLAN |
| C-900 | SEDIMENT - EROSION PLAN |



ISSUES

| No. | DESCRIPTION | DATE |
|-----|---------------------------|------------|
| 1 | ISSUED FOR CITY REVIEW | 2023-12-09 |
| 2 | REVISED PER CITY COMMENTS | 2023-03-09 |

SEE 010, 011, 012 FOR NOTES, LEGEND, CB TABLE, STREET SECTIONS AND DETAILS



CONSULTANTS

Project Coordinator:
Huntington Properties

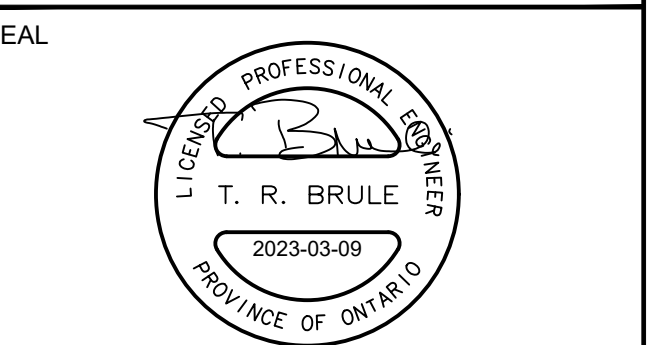
Architect:
A49 Architecture

Landscaper:
Fotem

Mechanical & Electrical:
Goodkey, Weedmark & Associates Limited

Surveyor:
Annis O'Sullivan Vollebek Ltd.

Geotech:
Paterson Group



PROJECT
PROPOSED SELF STORAGE DEVELOPMENT
60 DENZEL DOYLE COURT

PROJECT NO:
135470

DRAWN BY:
S.L./D.D.

CHECKED BY:
T.R.B.

PROJECT MGR:
R.M.

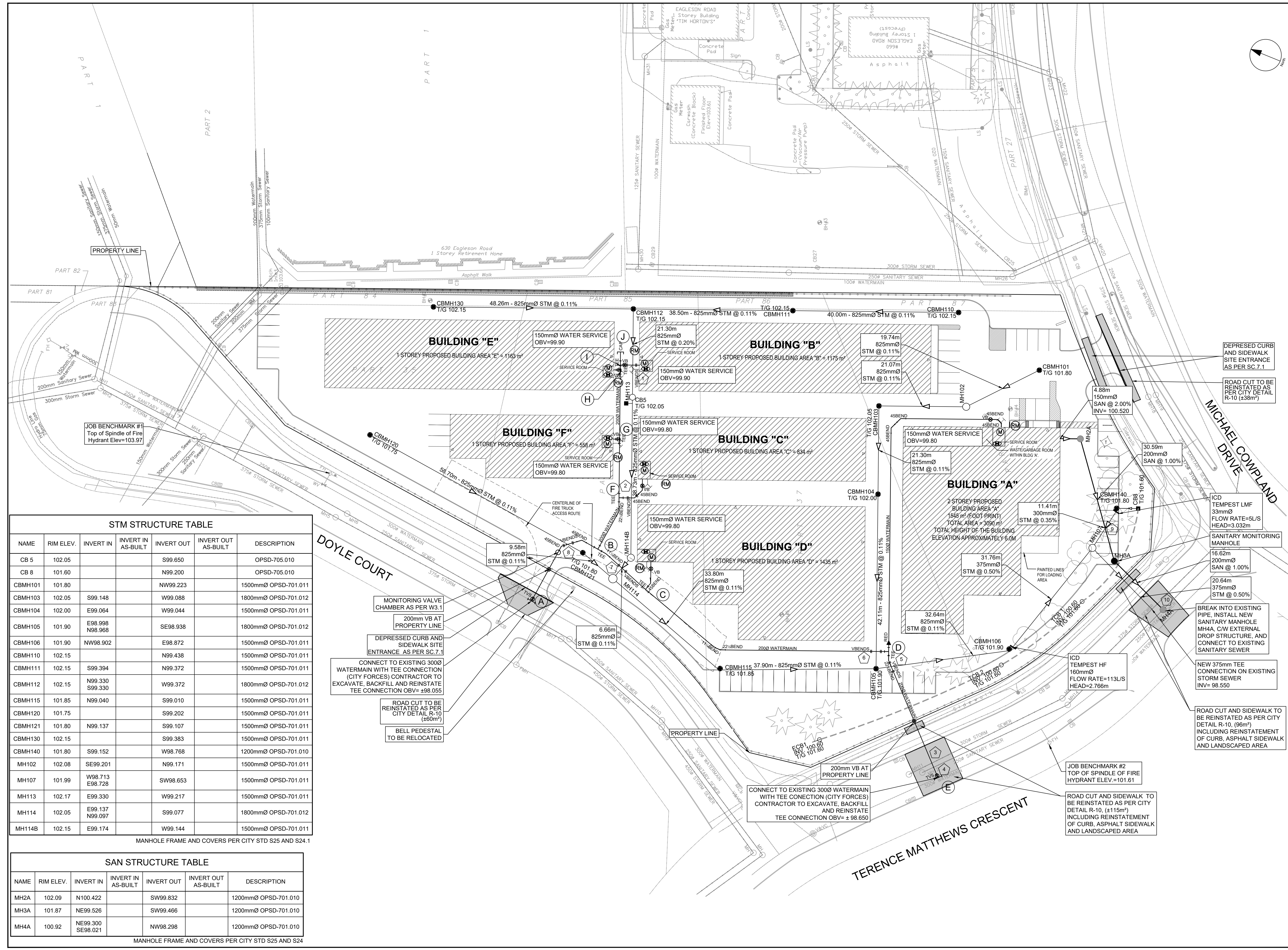
APPROVED BY:
T.R.B.

SHEET TITLE
GENERAL PLAN OF SERVICES

SHEET NUMBER
C-001

ISSUE
1

CITY PLAN No. 18885



STM STRUCTURE TABLE

| NAME | RIM ELEV. | INVERT IN | INVERT IN AS-BUILT | INVERT OUT | INVERT OUT AS-BUILT | DESCRIPTION |
|---------|-----------|--------------------|--------------------|------------|---------------------|----------------------|
| CB 5 | 102.05 | | | S99.650 | | OPSD-705.010 |
| CB 8 | 101.60 | | | N99.200 | | OPSD-705.010 |
| CBMH101 | 101.80 | | | NW99.223 | | 1500mmØ OPSD-701.011 |
| CBMH103 | 102.05 | S99.148 | | W99.088 | | 1800mmØ OPSD-701.012 |
| CBMH104 | 102.00 | E99.064 | | W99.044 | | 1500mmØ OPSD-701.011 |
| CBMH105 | 101.90 | E98.998 N98.968 | | SE98.938 | | 1800mmØ OPSD-701.012 |
| CBMH106 | 101.90 | NW98.902 | | E98.872 | | 1500mmØ OPSD-701.011 |
| CBMH110 | 102.15 | | | N99.438 | | 1500mmØ OPSD-701.011 |
| CBMH111 | 102.15 | S99.394 | | N99.372 | | 1500mmØ OPSD-701.011 |
| CBMH112 | 102.15 | N99.330 S99.330 | | W99.372 | | 1800mmØ OPSD-701.012 |
| CBMH115 | 101.85 | N99.040 | | S99.010 | | 1500mmØ OPSD-701.011 |
| CBMH120 | 101.75 | | | S99.202 | | 1500mmØ OPSD-701.011 |
| CBMH121 | 101.80 | N99.137 | | S99.107 | | 1500mmØ OPSD-701.011 |
| CBMH130 | 102.15 | | | S99.383 | | 1500mmØ OPSD-701.011 |
| CBMH140 | 101.80 | S99.152 | | W98.768 | | 1200mmØ OPSD-701.010 |
| MH102 | 102.08 | SE99.201 | | N99.171 | | 1500mmØ OPSD-701.011 |
| MH107 | 101.99 | W98.713 E98.728 | | SW98.653 | | 1500mmØ OPSD-701.011 |
| MH113 | 102.17 | E99.330 | | W99.217 | | 1500mmØ OPSD-701.011 |
| MH114 | 102.05 | E99.137 N99.097 | | S99.077 | | 1800mmØ OPSD-701.012 |
| MH114B | 102.15 | E99.174 | | W99.144 | | 1500mmØ OPSD-701.011 |

MANHOLE FRAME AND COVERS PER CITY STD S25 AND S24.1

SAN STRUCTURE TABLE

| NAME | RIM ELEV. | INVERT IN | INVERT IN AS-BUILT | INVERT OUT | INVERT OUT AS-BUILT | DESCRIPTION |
|------|-----------|----------------------|--------------------|------------|---------------------|----------------------|
| MH2A | 102.09 | N100.422 | | SW99.832 | | 1200mmØ OPSD-701.010 |
| MH3A | 101.87 | NE99.526 | | SW99.466 | | 1200mmØ OPSD-701.010 |
| MH4A | 100.92 | NE99.300 SE98.021 | | NW98.298 | | 1200mmØ OPSD-701.010 |

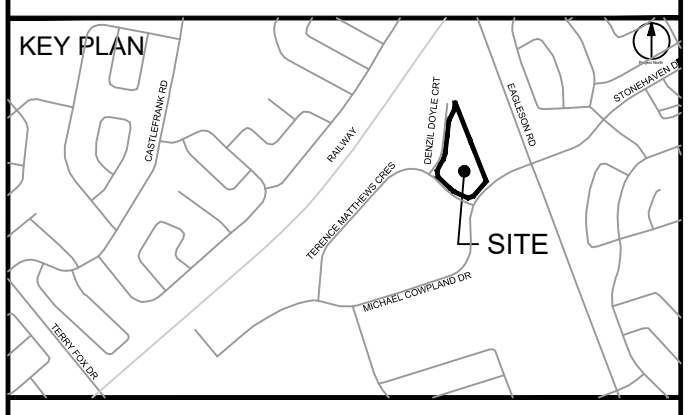
MANHOLE FRAME AND COVERS PER CITY STD S25 AND S24

CITY FILE No. D07-12-22-0174
Last Saved: March 9, 2023, by: Ebrhene
Plotted: Thursday, March 9, 2023 12:56:57 PM by: Eric Henne

COPYRIGHT
This drawing has been prepared solely for the intended use, thus any reproduction or distribution for any purpose other than authorized by IBI Group is forbidden.

IBI Group Professional Services (Canada) Inc.
ISSUES table with columns: No., DESCRIPTION, DATE

SEE 010, 011, 012 FOR NOTES, LEGEND, CB TABLE, STREET SECTIONS AND DETAILS



CONSULTANTS

Project Coordinator: Huntington Properties
Architect: A49 Architecture
Landscapes: Fobm
Mechanical & Electrical: Goodkey, Woodmark & Associates Limited

Geotech: Paterson Group



SEAL

IBI GROUP
Suite 400 - 333 Preston Street
Ottawa ON K1S 5N4 Canada

PROJECT PROPOSED SELF STORAGE DEVELOPMENT

60 DENZEL DOYLE COURT

PROJECT NO: 135470

DRAWN BY: S.L. / D.D. CHECKED BY: T.R.B.

PROJECT MGR: R.M. APPROVED BY: T.R.B.

SHEET TITLE: DETAILS AND NOTES

SHEET NUMBER: C-010 ISSUE: 1

NOTES:

- 1. ALL MATERIALS AND CONSTRUCTION IS TO BE IN ACCORDANCE WITH THE CURRENT CITY OF OTTAWA STANDARD DRAWINGS & SPECIFICATIONS OR OPSD/OPSS IF CITY DRAWINGS AND SPECIFICATIONS DO NOT APPLY.
2. THE POSITION OF UNDERGROUND AND ABOVEGROUND SERVICE, UTILITIES AND STRUCTURES ARE NOT NECESSARILY SHOWN ON THE CONTRACT DRAWINGS AND WHERE SHOWN, THE ACCURACY OF THE POSITION OF SUCH SERVICE, UTILITIES AND STRUCTURES IS NOT GUARANTEED.

ROADWAY STRUCTURE:

- CAR ONLY PARKING AREAS: (500mm)
50mm - SUPERPAVE 12.5 ASPHALTIC CONCRETE
150mm - OPSS GRANULAR "A" CRUSHED STONE
300mm - OPSS GRANULAR "B" TYPE II

- COLLECTOR ROAD: (600mm)
40mm - SUPERPAVE 12.5 ASPHALTIC CONCRETE
50mm - SUPERPAVE 19.0 ASPHALTIC CONCRETE
150mm - OPSS GRANULAR "A" CRUSHED STONE
450mm - OPSS GRANULAR "B" TYPE II

WATERMAIN SCHEDULE table with columns: Station, Description, Finished Grade, Top of Watermain, As Built Watermain

Pipe Interference Table

Pipe Interference Table with columns: Crossing No., PIPE 1, PIPE 2, Clearance

FAIRHALL, MOFFATT & WOODLAND LIMITED LEGEND

- CB - CATCH BASIN
MH - MANHOLE
BMH - BELL MANHOLE
WMH - WATER MANHOLE
HMH - HYDRO MANHOLE
TMH - TRAFFIC MANHOLE
THH - TRAFFIC HANDHOLE
FMH - FIBRE OPTIC MANHOLE
LS - LAMP STANDARD
UP - UTILITY POLE
WV - WATER VALVE
FH - FIRE HYDRANT
BH - BOREHOLE
BP - BELL PEDESTAL
TL - TRAFFIC LIGHT
TCB - TRAFFIC CONTROL BOX
BB - BELL BOX
GUY WIRE AND ANCHOR
BOLLARD
SIGN
CONIFEROUS TREE
DECIDUOUS TREE
W - WATERMAIN
OVERHEAD UTILITY WIRES
UH - UNDERGROUND HYDRO
UB - UNDERGROUND BELL
G - GAS MAIN
S - STORM SEWER
SAN - SANITARY SEWER
CURB
UC - UNDERGROUND ROGERS CABLE
F - FIBRE OPTICS

GENERAL LEGEND

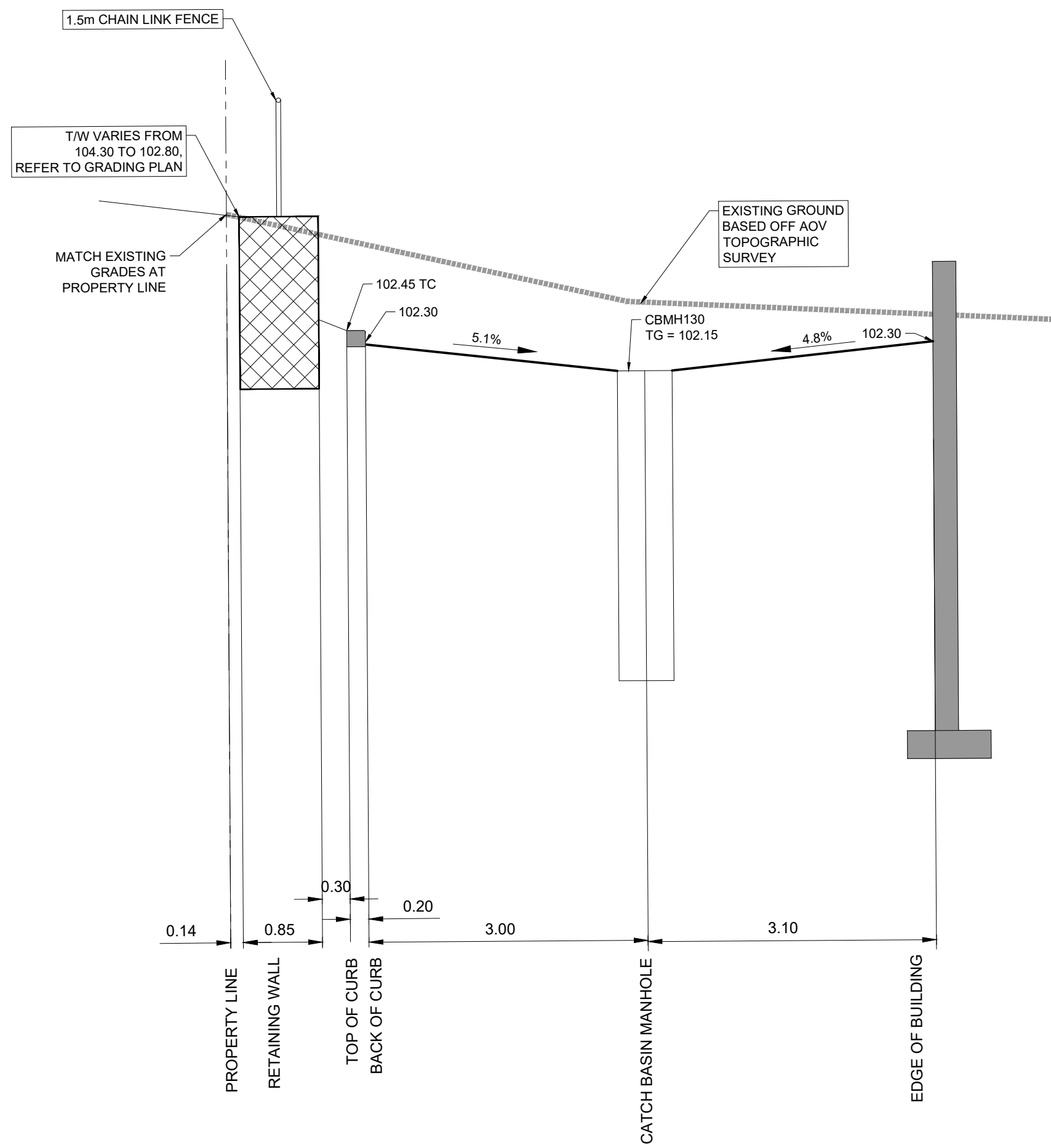
- LIMIT OF CONSTRUCTION
PHASING LINE
BARRIER CURB
MOUNTABLE CURB
DEPRESSED BARRIER CURB
CONCRETE SIDEWALK
TACTILE WALKING SURFACE INDICATOR
ASPHALT SIDEWALK / PATHWAY
BUS STOP CONCRETE / ASPHALT

SERVICING LEGEND

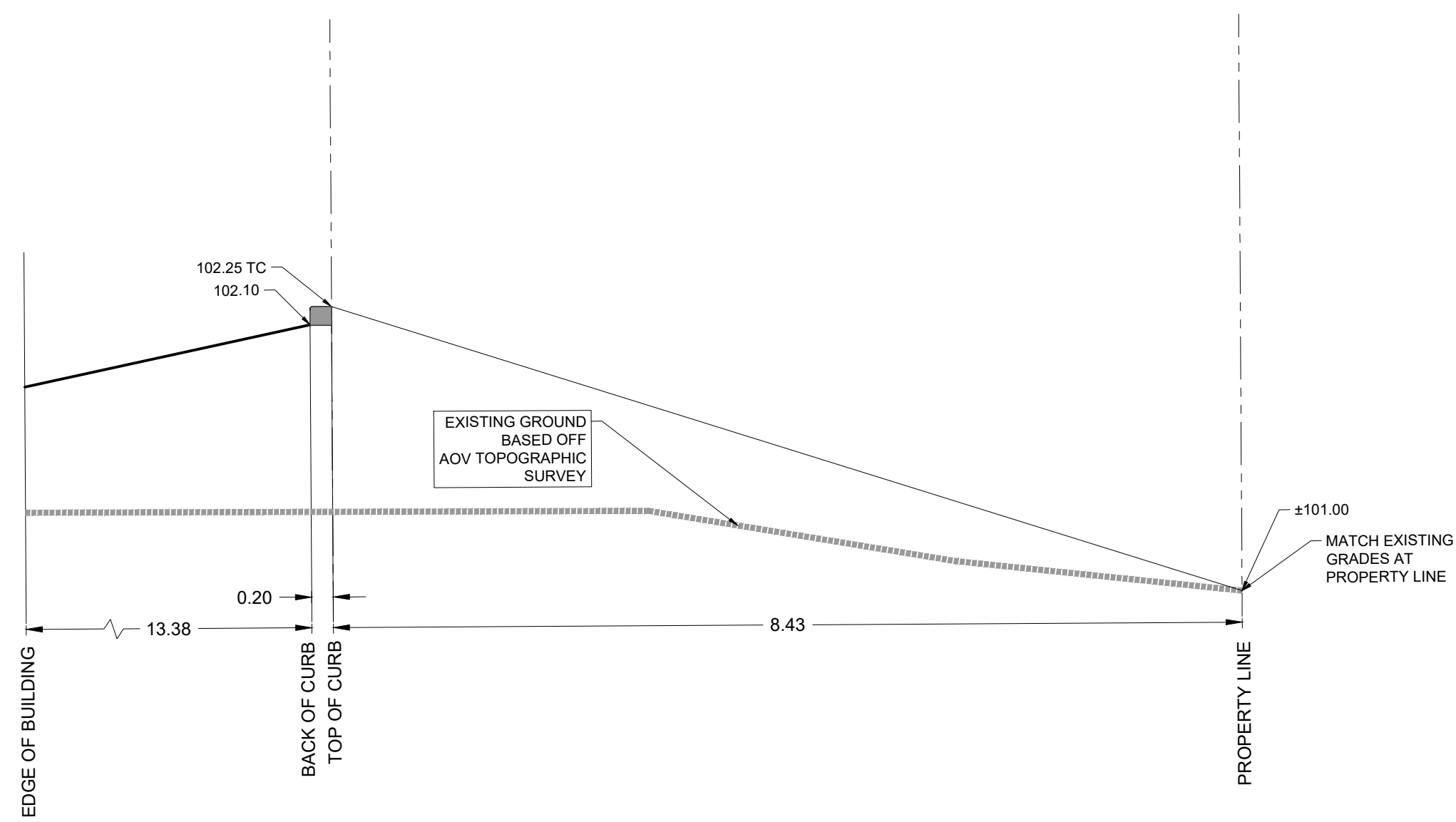
- MH118A SANITARY MANHOLE
MH118A WATERTIGHT SANITARY MANHOLE
200mm SAN SANITARY SEWER
MH109 MH118 STORM MANHOLE
825mm STM STORM SEWER - LESS THAN 9000
900mm STM STORM SEWER - 9000 AND GREATER
2000 WATERMAIN WATERMAIN
CB100 STREET CATCHBASIN C/W TOP OF GRATE
CIB101 CURB INLET CATCHBASIN C/W GUTTER GRADE
DCB100 DOUBLE CATCHBASIN C/W TOP OF GRATE
DCIB101 DOUBLE CURB INLET CATCHBASIN C/W GUTTER GRADE
DIB101 DITCH INLET MANHOLE C/W TOP OF GRATE
CBM101 CATCHBASIN MANHOLE C/W TOP OF GRATE
RYCB REAR YARD CATCHBASIN IN ROAD CONNECTING STRUCTURE C/W SOLID GRATE
TIG 104.35 REAR YARD "TEE" CATCHBASIN (3000) C/W TOP OF GRATE AND INVERT OUT
RV 103.35
TIG 104.50 REAR YARD "END" CATCHBASIN (3000) C/W TOP OF GRATE AND INVERT OUT
RV 103.50
TIG 104.35 REAR YARD "CUSTOM ANGLED" CATCHBASIN (4500) C/W TOP OF GRATE AND INVERT OUT
RV 103.35
TIG 104.35 REAR YARD "THREE WAY" CATCHBASIN (4500) C/W TOP OF GRATE AND INVERT OUT
RV 103.35
300mm CSP PERFORATED REAR YARD SUBDRAIN
CSP CULVERT C/W DIAMETER
VSVB VALVE AND VALVE BOX
VVC VALVE AND VALVE CHAMBER
PVC PARK VALVE CHAMBER C/W SERVICE POST
HYD 104.35 FIRE HYDRANT C/W BOTTOM OF FLANGE ELEVATION
2000 WM WATERMAIN REDUCER
VERTICAL BEND LOCATION
SIAMASE CONNECTION (IF REQUIRED)
METER (IF REQUIRED)
RM REMOTE METER (IF REQUIRED)
WATERMAIN IDENTIFICATION (IF REQUIRED)
PIPE CROSSING IDENTIFICATION (IF REQUIRED)
SINGLE SERVICE LOCATION
DOUBLE SERVICE LOCATION
BH 10 INFERRED REFUSAL (SEE GEOTECHNICAL REPORT)
HGL 101.79 101.79 101.79 100 YEAR STORM HYDRAULIC GRADE LINE AT MANHOLE
USP UNDERSIDE OF FOOTING ELEVATION
CLAY SEAL IN SEWER / WATERMAIN TRENCH

CATCHBASIN/CATCHBASIN MANHOLE/DITCH INLET DATA

Table with columns: STRUCTURE ID, STORM AREA ID, STRUCTURE, FRAME & COVER, ELEVATION (TOP OF GRATE, INVERT INLET, INVERT OUTLET), OUTLET PIPE (DIAMETER, TYPE), INLET CONTROL DEVICE (RESTRICTED FLOW, ICD TYPE), ORIFICE SIZE (CIRCULAR), COMMENTS



DETAIL A-A
N.T.S



DETAIL B-B
N.T.S

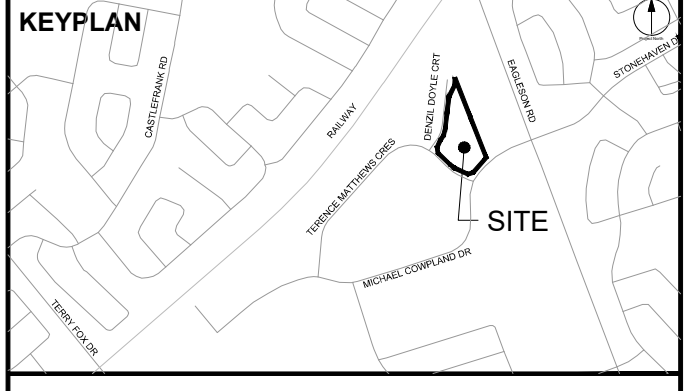
CLIENT
HUNTINGTON PROPERTIES

COPYRIGHT
This drawing has been prepared solely for the intended use, thus any reproduction or distribution for any purpose other than that authorized by IBI Group is forbidden. When dimensions shall have precedence over scaled dimensions. Contractors shall verify and be responsible for all dimensions and conditions on the job, and IBI Group shall be informed of any variations from the dimensions and conditions shown on the drawing. Shop drawings shall be submitted to IBI Group for general concurrence before proceeding with fabrication.
IBI Group Professional Services (Canada) Inc.
is a member of the IBI Group of companies.

ISSUES

| No. | DESCRIPTION | DATE |
|-----|---------------------------|------------|
| 1 | ISSUED FOR CITY REVIEW | 2023-12-09 |
| 2 | REVISED PER CITY COMMENTS | 2023-03-09 |

SEE 010, 011, 012 FOR NOTES, LEGEND, CB TABLE, STREET SECTIONS AND DETAILS



CONSULTANTS

Project Coordinator:
Huntington Properties

Architect:
A49 Architecture

Landscape:
Folern

Mechanical & Electrical:
Goodkey, Weedmark & Associates Limited

Surveyor:
Annis O'Sullivan Vollebakk Ltd.

Geotech:
Paterson Group

SEAL

IBI GROUP
400 - 333 Preston Street
Ottawa ON K1S 5M4 Canada
tel 613 225 1311 fax 613 225 9868
ibigroup.com

PROJECT
PROPOSED SELF STORAGE DEVELOPMENT

60 DENZEL DOYLE COURT

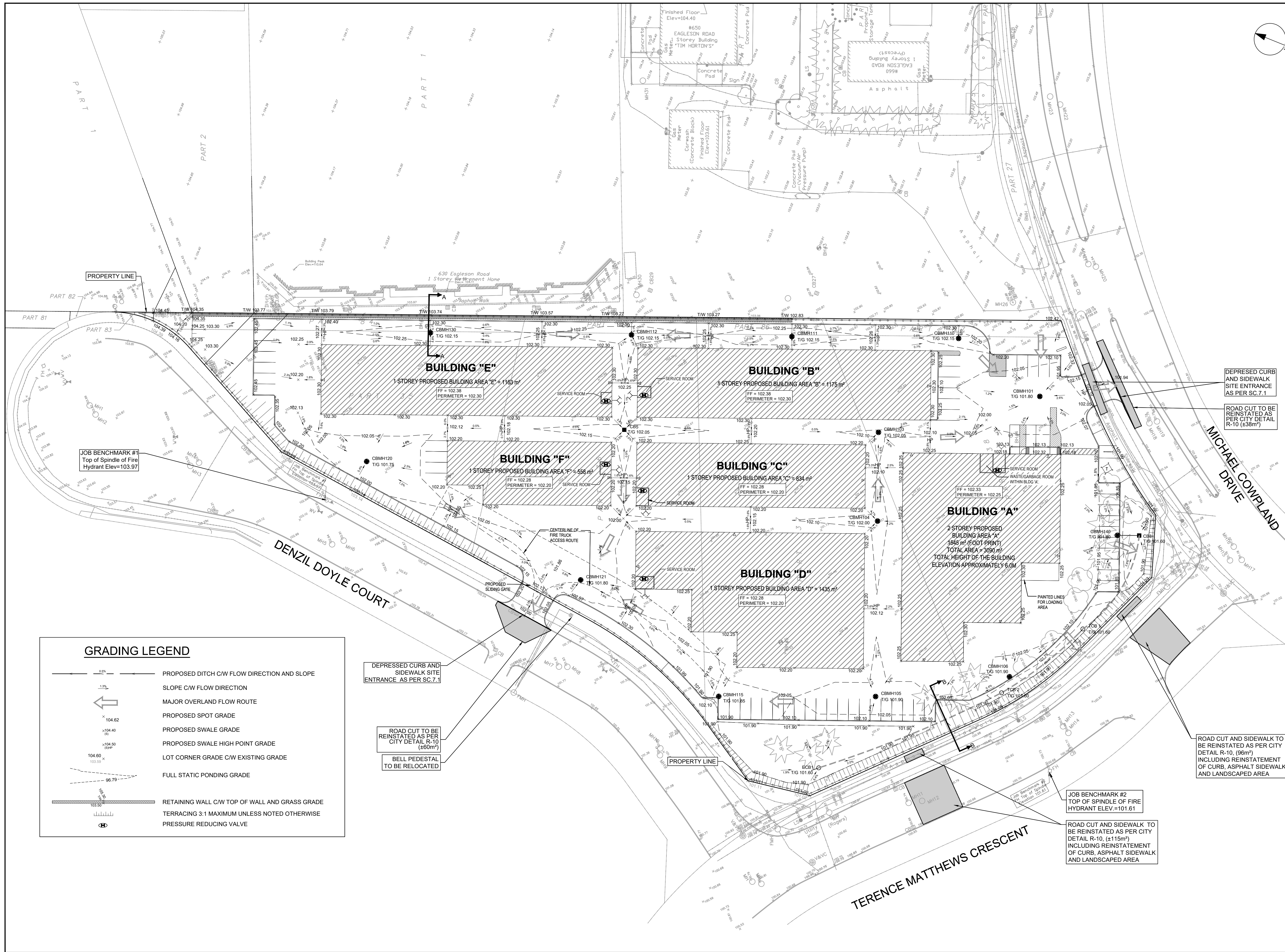
PROJECT NO:
135470

| | |
|--------------------------|------------------------|
| DRAWN BY: S.L. / D.D. | CHECKED BY: T.R.B. |
| PROJECT MGR: | APPROVED BY: T.R.B. |

SHEET TITLE
CROSS SECTIONS

| | |
|------------------------------|-------------------|
| SHEET NUMBER C-011 | ISSUE 1 |
|------------------------------|-------------------|

File Location: J:\135470_60_Denzel_Doyle_Production\7_03_Design\04_Civil\Sheets\C011_CROSS SECTIONS.rvt
 Last Saved: March 9, 2023, by Ehenne
 Plotted: Thursday, March 9, 2023 12:57:41 PM by Eric Henne
CITY FILE No. D07-12-22-0174



GRADING LEGEND

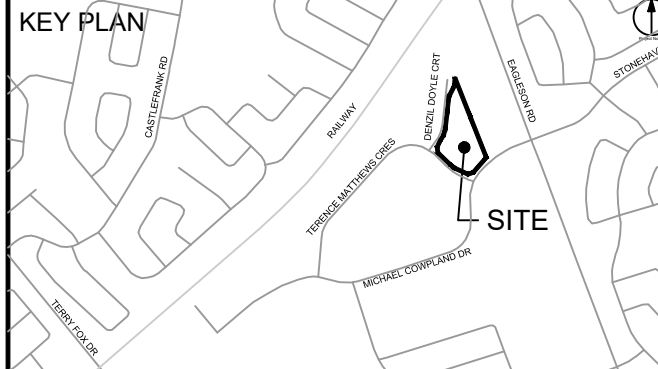
- PROPOSED DITCH C/W FLOW DIRECTION AND SLOPE
- SLOPE C/W FLOW DIRECTION
- MAJOR OVERLAND FLOW ROUTE
- PROPOSED SPOT GRADE
- PROPOSED SWALE GRADE
- PROPOSED SWALE HIGH POINT GRADE
- LOT CORNER GRADE C/W EXISTING GRADE
- FULL STATIC PONDING GRADE
- RETAINING WALL C/W TOP OF WALL AND GRASS GRADE
- TERRACING 3:1 MAXIMUM UNLESS NOTED OTHERWISE
- PRESSURE REDUCING VALVE

CLIENT
HUNTINGTON PROPERTIES

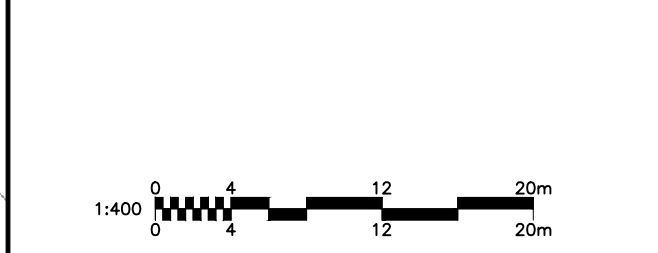
COPYRIGHT
 This drawing has been prepared solely for the intended use. Any reproduction or distribution for any purpose other than authorized by IBI Group is forbidden. Written dimensions shall have precedence over scaled dimensions. Contractors shall verify and be responsible for all dimensions and conditions on the job, and IBI Group shall be informed of any variations from the dimensions and conditions shown on the drawing. Shop drawings shall be submitted to IBI Group for general concurrence before proceeding with fabrication.
 IBI Group Professional Services (Canada) Inc.
 is a member of the IBI Group of companies.

| ISSUES | No. | DESCRIPTION | DATE |
|--------|---------------------------|-------------|------------|
| 1 | ISSUED FOR CITY REVIEW | | 2023-12-09 |
| 2 | REVISED PER CITY COMMENTS | | 2023-03-09 |

SEE 010, 011, 012 FOR NOTES, LEGEND, CB TABLE, STREET SECTIONS AND DETAILS



CONSULTANTS
 Project Coordinator:
 Huntington Properties
 Architect:
 A49 Architecture
 Landscape:
 Fohem
 Mechanical & Electrical:
 Goodkey, Weedmark & Associates Limited
 Surveyor:
 Annis O'Sullivan Vollebek Ltd.
 Geotech:
 Paterson Group



SEAL

IBI GROUP
 Suite 400 - 333 Preston Street
 Ottawa ON K1S 5N4 Canada
 Tel: 613 225 1311 / 613 241 3300 Fax: 613 225 9868
 ibigroup.com

PROJECT
PROPOSED SELF STORAGE DEVELOPMENT
 60 DENZEL DOYLE COURT

PROJECT NO:
 135470
 DRAWN BY:
 S.L. / D.D.
 PROJECT MGR:
 R.M.

CHECKED BY:
 T.R.B.
 APPROVED BY:
 T.R.B.

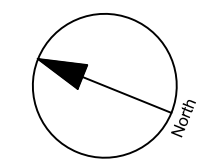
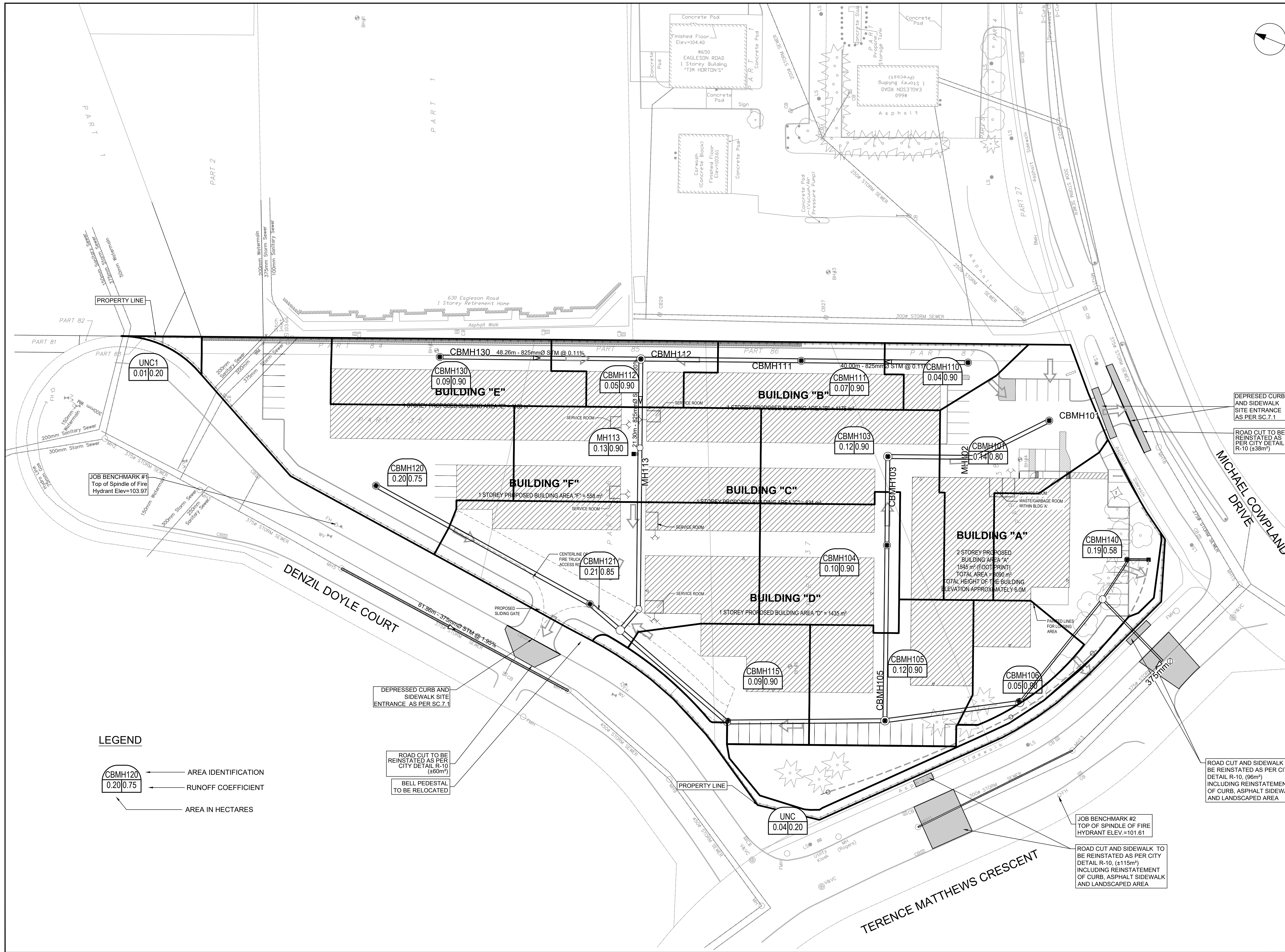
SHEET TITLE
GRADING PLAN

SHEET NUMBER
C-200

ISSUE
1

CITY PLAN No. 18885

CITY FILE No. D07-12-22-0174
 File Location: A:\135470_IBI_Denzel_D07_0_Production\IBI_Design\04_Civil\Sheets\C-200_GRADING PLAN.dwg Last Saved: March 9, 2023, by: Ehenne Plotted: Thursday, March 9, 2023 12:58:16 PM by: Eric Henne

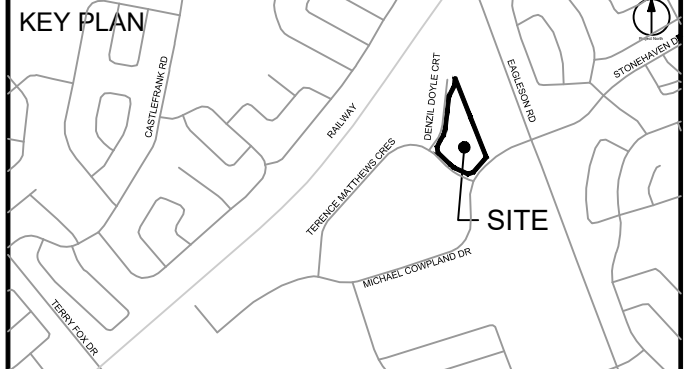


CLIENT
HUNTINGTON PROPERTIES

COPYRIGHT
 This drawing has been prepared solely for the intended use. Any reproduction or distribution for any purpose other than authorized by IBI Group is forbidden. When dimensions shall have precedence over scaled dimensions. Contractors shall verify and be responsible for all dimensions and conditions on the job, and IBI Group shall be informed of any variations from the dimensions and conditions shown on the drawing. Shop drawings shall be submitted to IBI Group for general conformance before proceeding with fabrication.
 IBI Group Professional Services (Canada) Inc.
 is a member of the IBI Group of companies.

| ISSUES | No. | DESCRIPTION | DATE |
|--------|-----|---------------------------|------------|
| | 1 | ISSUED FOR CITY REVIEW | 2023-12-09 |
| | 2 | REVISED PER CITY COMMENTS | 2023-03-09 |

SEE 010, 011, 012 FOR NOTES, LEGEND, CB TABLE, STREET SECTIONS AND DETAILS



CONSULTANTS
 Project Coordinator:
 Huntington Properties
 Architect:
 A49 Architecture
 Landscape:
 Fofem
 Mechanical & Electrical:
 Goodkey, Weedmark & Associates Limited
 Surveyor:
 Annis O'Sullivan Vollebek Ltd.
 Geotech:
 Paterson Group

DEPRESSED CURB AND SIDEWALK SITE ENTRANCE AS PER SC.7.1
 ROAD CUT TO BE REINSTATED AS PER CITY DETAIL R-10 (±38m²)

1:400

SEAL

 T. R. BRULE
 2023-03-09
 PROVINCE OF ONTARIO

IBI GROUP
 Suite 400 - 333 Preston Street
 Ottawa ON K1S 5N4 Canada
 Tel: 613 225 1311 / 613 241 3300 Fax: 613 225 9868
 ibigroup.com

PROJECT
PROPOSED SELF STORAGE DEVELOPMENT
 60 DENZIL DOYLE COURT

PROJECT NO:
 135470

DRAWN BY:
 S.L. / D.D.

PROJECT MGR:
 R.M.

CHECKED BY:
 T.R.B.

APPROVED BY:
 T.R.B.

SHEET TITLE
STORM DRAINAGE AREA PLAN

SHEET NUMBER
C-500

ISSUE
1

CITY PLAN No. 18885

LEGEND

AREA IDENTIFICATION

RUNOFF COEFFICIENT

AREA IN HECTARES

DEPRESSED CURB AND SIDEWALK SITE ENTRANCE AS PER SC.7.1

ROAD CUT TO BE REINSTATED AS PER CITY DETAIL R-10 (±60m²)

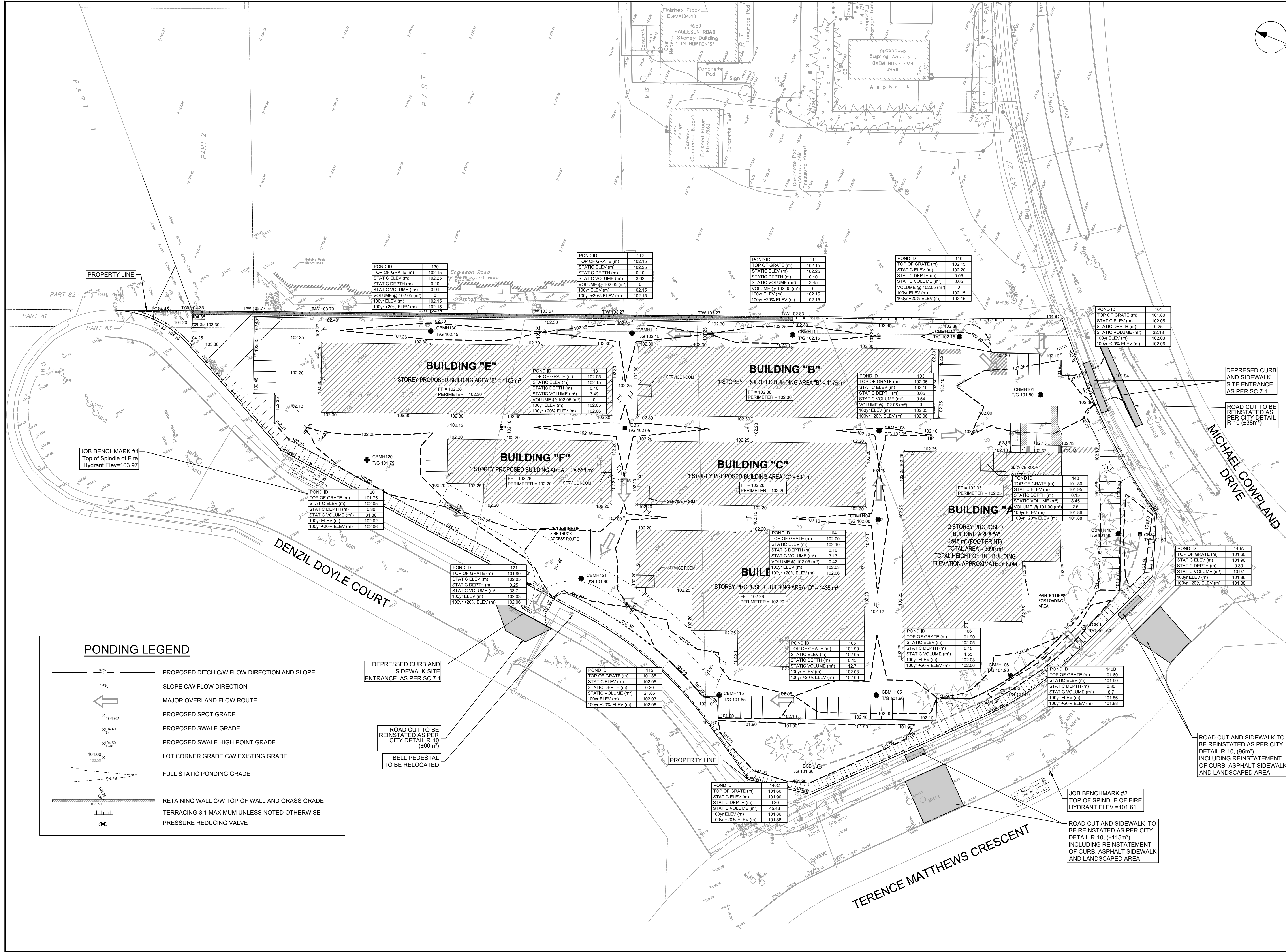
BELL PEDESTAL TO BE RELOCATED

ROAD CUT AND SIDEWALK TO BE REINSTATED AS PER CITY DETAIL R-10, (±115m²) INCLUDING REINSTATEMENT OF CURB, ASPHALT SIDEWALK AND LANDSCAPED AREA

JOB BENCHMARK #2 TOP OF SPINDLE OF FIRE HYDRANT ELEV.=101.61

ROAD CUT AND SIDEWALK TO BE REINSTATED AS PER CITY DETAIL R-10, (±115m²) INCLUDING REINSTATEMENT OF CURB, ASPHALT SIDEWALK AND LANDSCAPED AREA

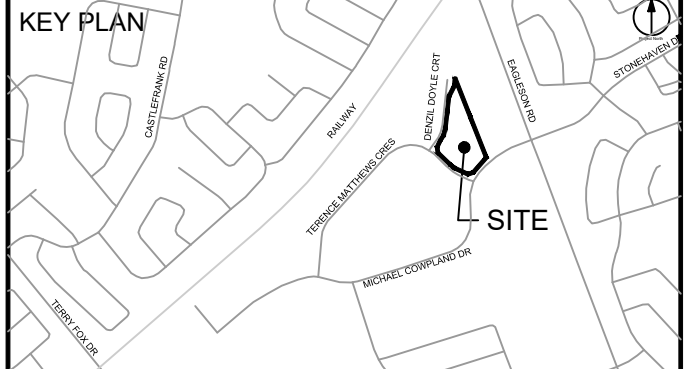
CITY FILE No. D07-12-22-0174
 File Location: \\135470_60_Denzil_D07_01_Production\IBI_Design\04_Civil\Sheets\C-500_STORM DRAINAGE AREA PLAN.dwg Last Saved: March 7, 2023, by stefan.gieseler Plotted: Thursday, March 9, 2023, 12:58:49 PM by Eric Henne



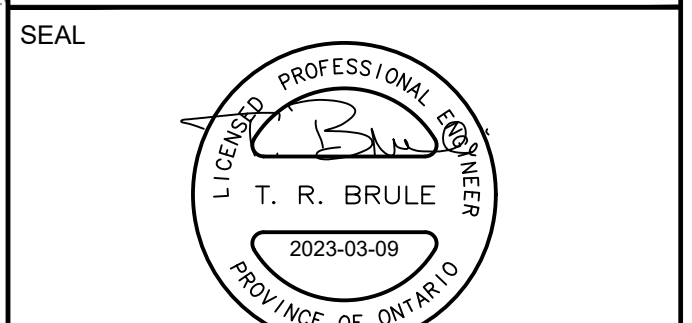
ISSUES

| No. | DESCRIPTION | DATE |
|-----|---------------------------|------------|
| 1 | ISSUED FOR CITY REVIEW | 2023-12-09 |
| 2 | REVISED PER CITY COMMENTS | 2023-03-09 |

SEE 010, 011, 012 FOR NOTES, LEGEND, CB TABLE, STREET SECTIONS AND DETAILS



CONSULTANTS
 Project Coordinator:
 Huntington Properties
 Architect:
 A49 Architecture
 Landscape:
 Fohm
 Mechanical & Electrical:
 Goodkey, Woodmark & Associates Limited
 Surveyor:
 Annis O'Sullivan Vollebek Ltd.
 Geotech:
 Paterson Group



PROJECT
PROPOSED SELF STORAGE DEVELOPMENT
 60 DENZIL DOYLE COURT

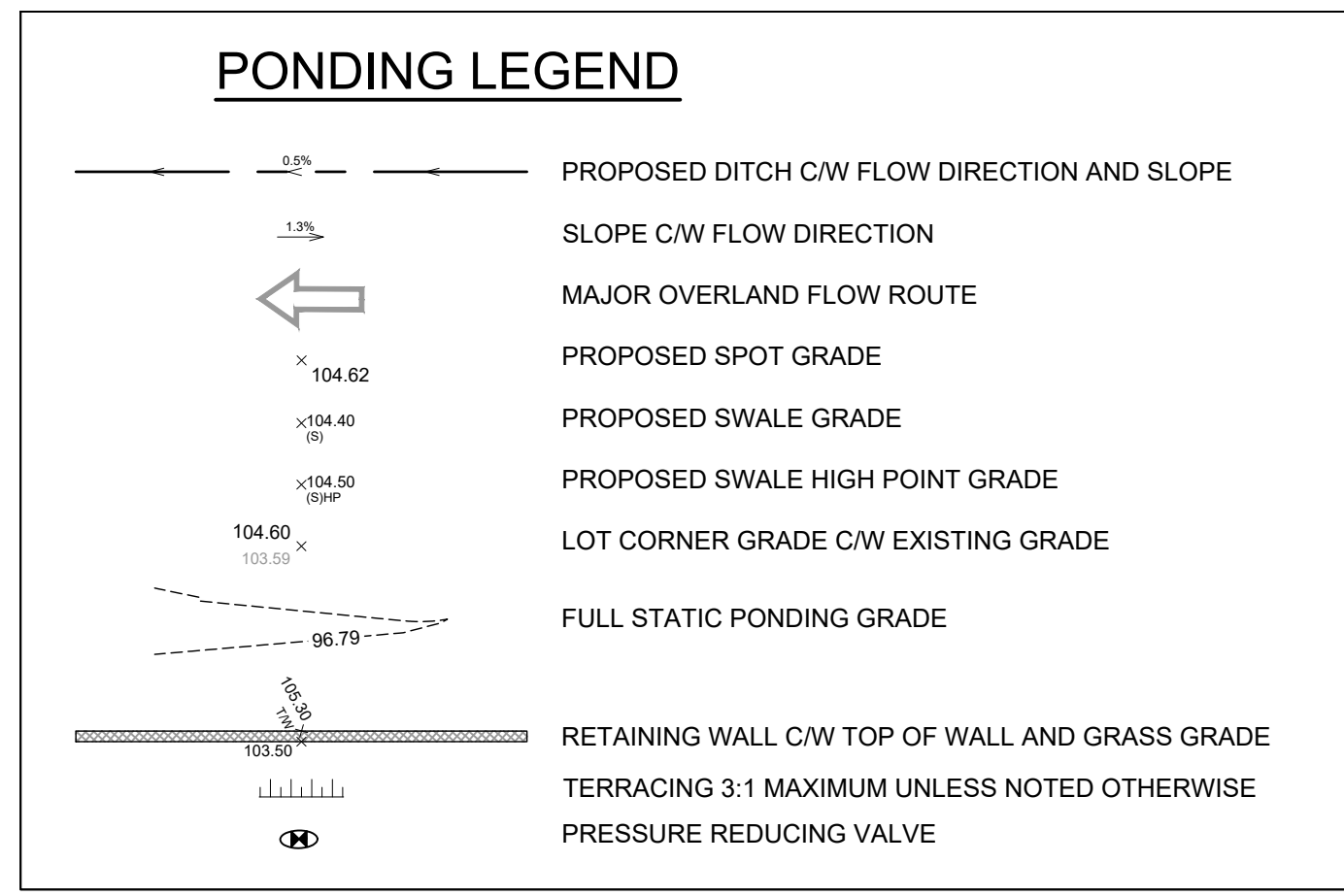
PROJECT NO:
 135470
 DRAWN BY:
 S.L. / D.D.
 PROJECT MGR:
 R.M.

CHECKED BY:
 T.R.B.
 APPROVED BY:
 T.R.B.

SHEET TITLE
PONDING PLAN

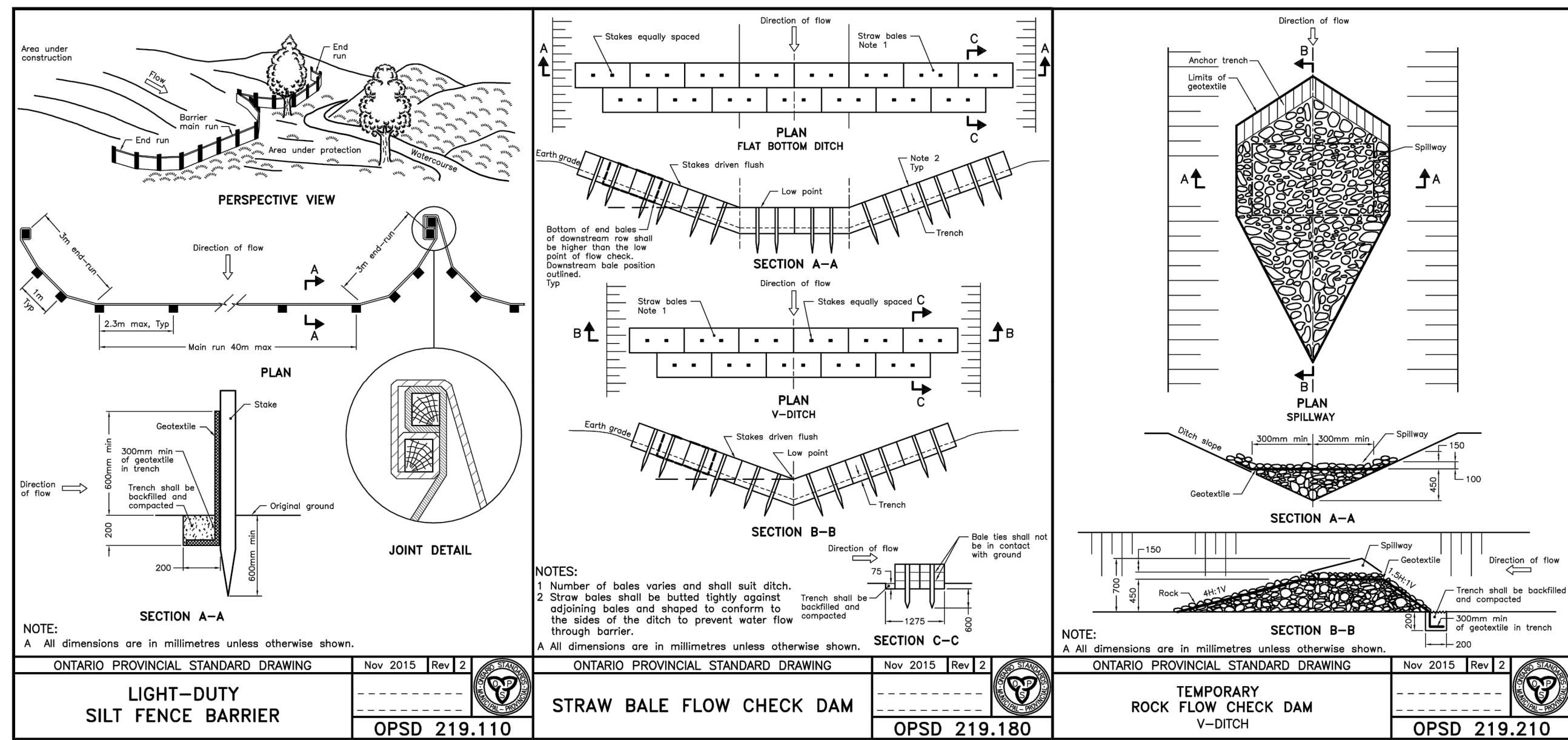
SHEET NUMBER
C-600
 CITY PLAN No. 18885

ISSUE
1



| POND ID | TOP OF GRATE (m) | STATIC ELEV (m) | STATIC DEPTH (m) | STATIC VOLUME (m³) | VOLUME @ 102.05 (m³) | 100yr ELEV (m) | 100yr +20% ELEV (m) |
|---------|------------------|-----------------|------------------|--------------------|----------------------|----------------|---------------------|
| 130 | 102.15 | 102.25 | 0.10 | 3.91 | 0 | 102.15 | 102.15 |
| 112 | 102.15 | 102.25 | 0.10 | 3.62 | 0 | 102.15 | 102.15 |
| 111 | 102.15 | 102.25 | 0.10 | 3.45 | 0 | 102.15 | 102.15 |
| 110 | 102.15 | 102.20 | 0.05 | 0.65 | 0 | 102.15 | 102.15 |
| 101 | 102.05 | 102.05 | 0.25 | 32.18 | 0 | 102.03 | 102.06 |
| 113 | 102.15 | 102.15 | 0.10 | 3.49 | 0 | 102.05 | 102.06 |
| 103 | 102.05 | 102.05 | 0.05 | 0.54 | 0 | 102.05 | 102.06 |
| 149 | 101.80 | 101.95 | 0.15 | 8.45 | 0 | 101.88 | 101.88 |
| 140A | 101.60 | 101.60 | 0.30 | 3.7 | 0 | 101.61 | 101.61 |
| 121 | 101.80 | 102.05 | 0.25 | 33.7 | 0 | 102.03 | 102.06 |
| 104 | 102.00 | 102.10 | 0.10 | 3.13 | 0.42 | 102.03 | 102.06 |
| 105 | 101.90 | 102.05 | 0.15 | 4.55 | 0 | 102.03 | 102.06 |
| 115 | 101.85 | 102.05 | 0.20 | 21.86 | 0 | 102.03 | 102.06 |
| 106 | 101.90 | 102.05 | 0.15 | 4.55 | 0 | 102.03 | 102.06 |
| 140B | 101.60 | 101.90 | 0.30 | 3.7 | 0 | 101.61 | 101.61 |

File Location: A:\135470_IBI_Denzil_Doyle_Court_Ponding_Plan.dwg
 Last Saved: March 8, 2023, 12:58:25 PM by Eric Henne
 Printed: Thursday, March 8, 2023 12:58:25 PM by Eric Henne
 C:\Users\eric.henne\OneDrive\Documents\135470_IBI_Denzil_Doyle_Court_Ponding_Plan.dwg
 Scale: 1:1000
 City File No. D07-12-22-0174

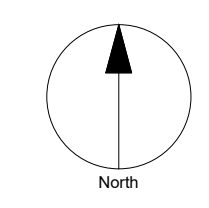


NOTES:

- CONTRACTOR TO PROVIDE DETAILS ON LOCATION(S) AND DESIGN OF DEWATERING TRAP(S) PRIOR TO COMMENCING WORK. CONTRACTOR ALSO RESPONSIBLE FOR MAINTAINING TRAP(S) AND ADJUSTING SIZE(S) IF DEEMED REQUIRED BY THE ENGINEER DURING CONSTRUCTION.
- CONTRACTOR TO PROTECT EXISTING CATCHBASINS WITH FILTER CLOTH UNDER THE COVERS TO TRAP SEDIMENTATION. REFER TO IDENTIFIED STRUCTURES.
- WORKS NOTED ABOVE ARE TO BE INSTALLED, INSPECTED, MAINTAINED AND ULTIMATELY REMOVED BY SERVICING CONTRACTOR.
- THIS IS A "LIVING DOCUMENT" AND MAY BE MODIFIED IN THE EVENT THE PROPOSED CONTROL MEASURES ARE INSUFFICIENT.

LEGEND :

- LIGHT DUTY SILT FENCE AS PER OPSD-219.110
- SNOW FENCE
- STRAW BALE CHECK DAM AS PER OPSD-219.180
- ROCK CHECK DAM AS PER OPSD-219.210
- SILT SACK PLACED UNDER EXISTING CB COVER
- TEMPORARY MUD MAT 0.15m THICK 50mm CLEAR STONE ON NON WOVEN FILTER CLOTH



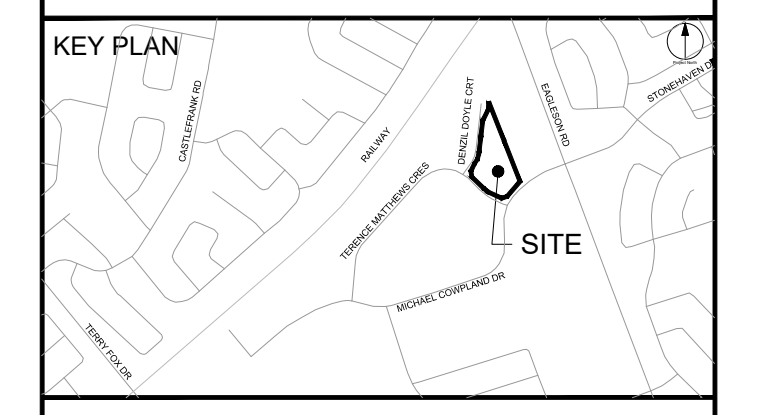
CLIENT
HUNTINGTON PROPERTIES

COPYRIGHT
 This drawing has been prepared solely for the intended use. Any reproduction or distribution for any purpose other than authorized by IBI Group is forbidden. Written dimensions shall have precedence over scaled dimensions. Contractors shall verify and be responsible for all dimensions and conditions on the job, and IBI Group shall be informed of any variations from the dimensions and conditions shown on the drawing. Shop drawings shall be submitted to IBI Group for general confirmation before proceeding with fabrication.

IBI Group Professional Services (Canada) Inc.
 is a member of the IBI Group of companies.

| ISSUES | | |
|--------|---------------------------|------------|
| No. | DESCRIPTION | DATE |
| 1 | ISSUED FOR CITY REVIEW | 2023-12-09 |
| 2 | REVISED PER CITY COMMENTS | 2023-03-09 |

SEE 010, 011, 012 FOR NOTES, LEGEND, CB TABLE, STREET SECTIONS AND DETAILS



LEGEND

Project Coordinator:
Huntington Properties

Architect:
A49 Architecture

Landscape:
Fotem

Mechanical & Electrical:
Goodkey, Weedmark & Associates Limited

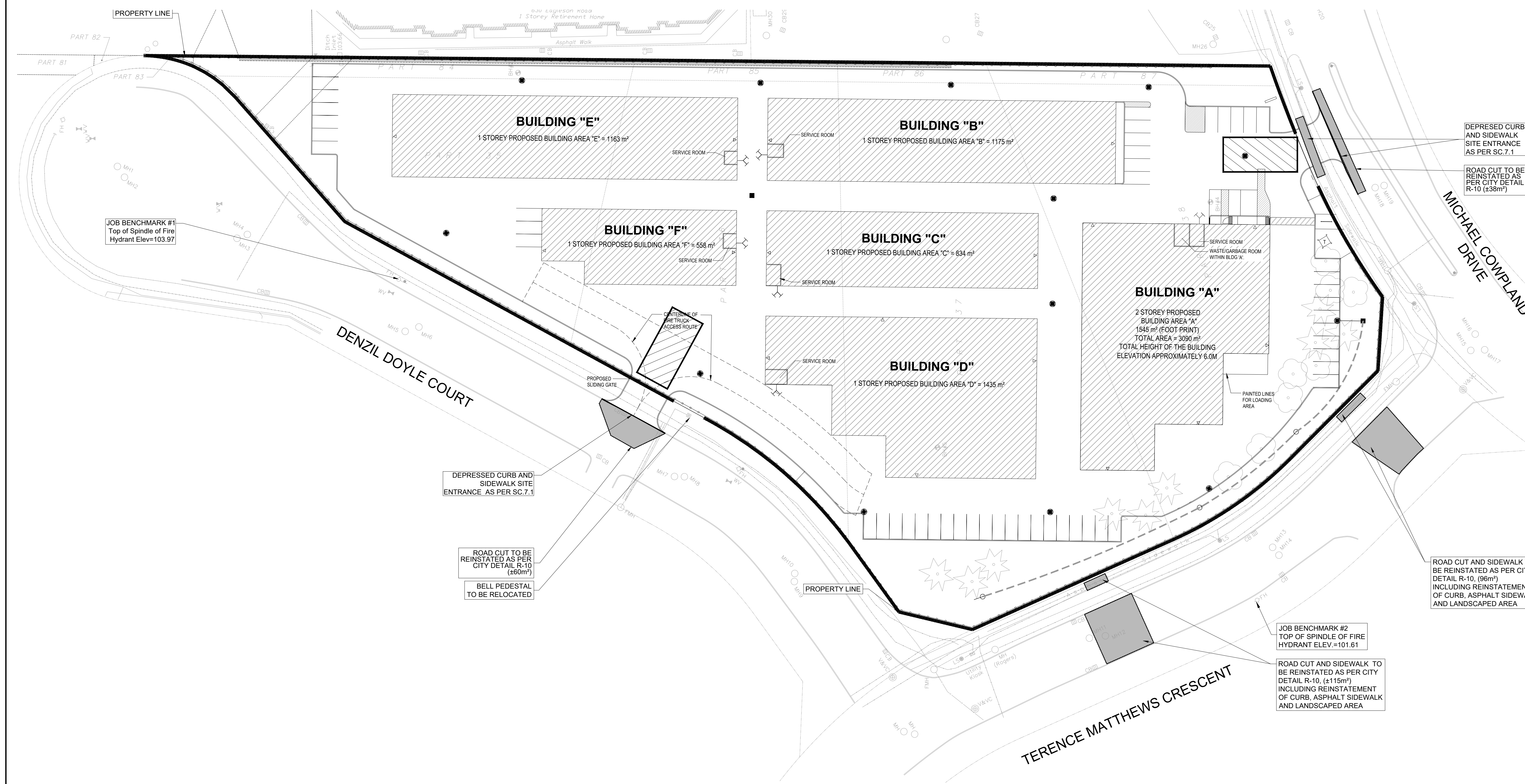
Surveyor:
Annis O'Sullivan Vollebakk Ltd.

Geotech:
Paterson Group

DEPRESSED CURB AND SIDEWALK SITE ENTRANCE AS PER SC.7.1

ROAD CUT TO BE REINSTATED AS PER CITY DETAIL R-10 (±38m²)

SEAL



IBI GROUP
 Suite 400 - 333 Preston Street
 Ottawa, ON K1S 5N4 Canada
 Tel: 613 225 1311 / 613 241 3300 Fax: 613 225 9868
 ibigroup.com

PROJECT
PROPOSED SELF STORAGE DEVELOPMENT
 60 DENZIL DOYLE COURT

PROJECT NO:
135470

DRAWN BY:
S.L. / D.D.

CHECKED BY:
T.R.B.

PROJECT MGR:
R.M.

APPROVED BY:
T.R.B.

SHEET TITLE
SEDIMENT - EROSION PLAN

SHEET NUMBER
C-900

ISSUE
1

File Location: \\1135470_ibi_denzil_doyl_production\03_Design\04_Civil\Sheets\C-900_SEDIMEN - EROSION PLAN.dwg
 Last Saved: March 7, 2023, by stein.giesler
 Plotted: Thursday, March 9, 2023 12:59:48 PM by Eric Henne
 CITY FILE No. D07-12-22-0174