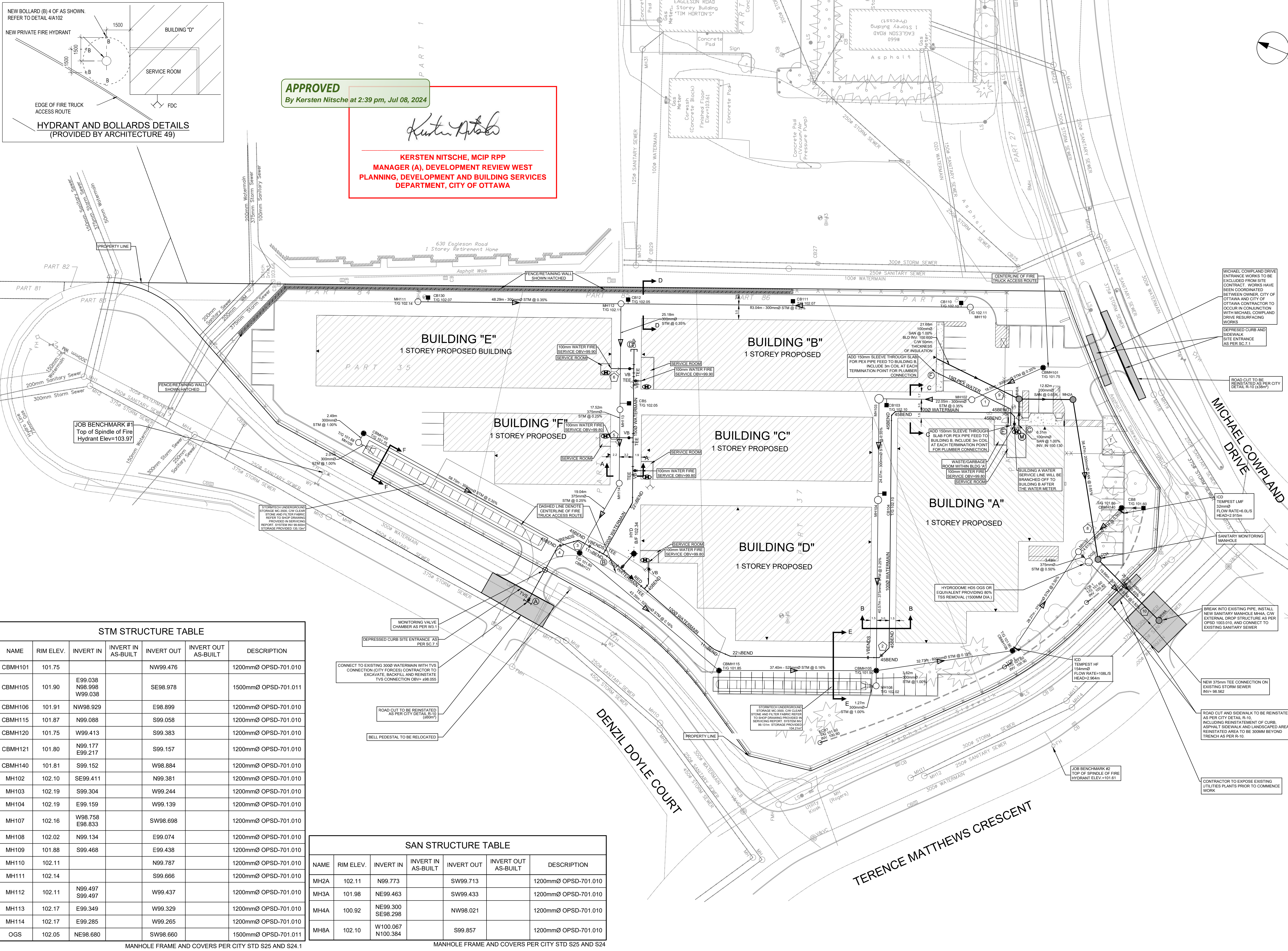


APPROVED
By Kersten Nitsche at 2:39 pm, Jul 08, 2024

Kersten Nitsche
KERSTEN NITSCHKE, MCIP RPP
MANAGER (A), DEVELOPMENT REVIEW WEST
PLANNING, DEVELOPMENT AND BUILDING SERVICES
DEPARTMENT, CITY OF OTTAWA



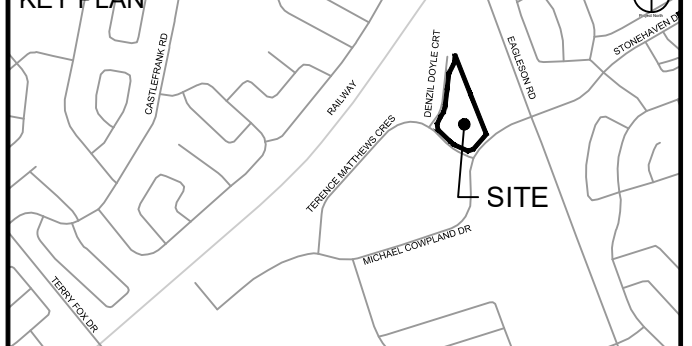
CLIENT
HUNTINGTON PROPERTIES
Huntington PROPERTIES

COPYRIGHT
This drawing has been prepared solely for the intended use. Any reproduction or distribution for any purpose other than authorized by IBI Group is forbidden. When dimensions shall have precedence over scaled dimensions. Contractors shall verify and be responsible for all dimensions and conditions on the job, and IBI Group shall be informed of any variations from the dimensions and conditions shown on the drawing. Shop drawings shall be submitted to IBI Group for general conformance before proceeding with fabrication.
IBI Group Professional Services (Canada) Inc.
is a member of the IBI Group of companies.

ISSUES

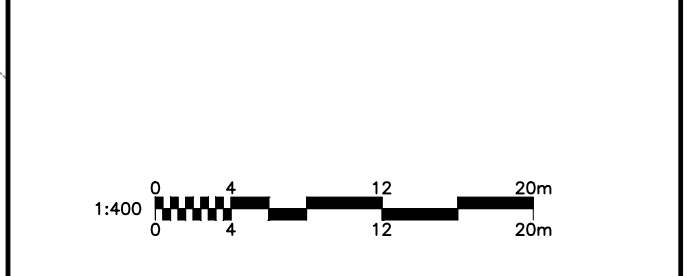
No.	DESCRIPTION	DATE
1	ISSUED FOR CITY REVIEW	2023-12-09
2	REVISED PER CITY COMMENTS	2023-03-09
3	REVISED PER CITY COMMENTS	2023-07-07
4	REVISED PER CITY COMMENTS	2023-07-19
5	REVISED PER CITY COMMENTS	2023-09-22
6	REVISED PER CITY COMMENTS	2023-11-13
7	REVISED PER CITY COMMENTS	2023-12-20

SEE 010, 011, 012 FOR NOTES, LEGEND, CB TABLE, STREET SECTIONS AND DETAILS



CONSULTANTS

Project Coordinator:
Huntington Properties
Architect:
A49 Architecture
Landscape:
Fotem
Mechanical & Electrical:
Goodkey & Woodmark & Associates Limited
Surveyor:
Annis O'Sullivan Vollebakk Ltd.
Geotech:
Paterson Group



SEAL

LICENSED PROFESSIONAL ENGINEER
W. ZHUANG
100231427
2023/12/20
PROVINCE OF ONTARIO

STM STRUCTURE TABLE

NAME	RIM ELEV.	INVERT IN	INVERT IN AS-BUILT	INVERT OUT	INVERT OUT AS-BUILT	DESCRIPTION
CBMH101	101.75			NW99.476		1200mmØ OPSD-701.010
CBMH105	101.90	E99.038 N98.998 W99.038		SE98.978		1500mmØ OPSD-701.011
CBMH106	101.91	NW98.929		E98.899		1200mmØ OPSD-701.010
CBMH115	101.87	N99.088		S99.058		1200mmØ OPSD-701.010
CBMH120	101.75	W99.413		S99.383		1200mmØ OPSD-701.010
CBMH121	101.80	N99.177 E99.217		S99.157		1200mmØ OPSD-701.010
CBMH140	101.81	S99.152		W98.884		1200mmØ OPSD-701.010
MH102	102.10	SE99.411		N99.381		1200mmØ OPSD-701.010
MH103	102.19	S99.304		W99.244		1200mmØ OPSD-701.010
MH104	102.19	E99.159		W99.139		1200mmØ OPSD-701.010
MH107	102.16	W98.758 E98.833		SW98.698		1200mmØ OPSD-701.010
MH108	102.02	N99.134		E99.074		1200mmØ OPSD-701.010
MH109	101.88	S99.468		E99.438		1200mmØ OPSD-701.010
MH110	102.11			N99.787		1200mmØ OPSD-701.010
MH111	102.14			S99.666		1200mmØ OPSD-701.010
MH112	102.11	N99.497 S99.497		W99.437		1200mmØ OPSD-701.010
MH113	102.17	E99.349		W99.329		1200mmØ OPSD-701.010
MH114	102.17	E99.285		W99.265		1200mmØ OPSD-701.010
OGS	102.05	NE98.680		SW98.660		1500mmØ OPSD-701.011

MANHOLE FRAME AND COVERS PER CITY STD S25 AND S24.1

SAN STRUCTURE TABLE

NAME	RIM ELEV.	INVERT IN	INVERT IN AS-BUILT	INVERT OUT	INVERT OUT AS-BUILT	DESCRIPTION
MH2A	102.11	N99.773		SW99.713		1200mmØ OPSD-701.010
MH3A	101.98	NE99.463		SW99.433		1200mmØ OPSD-701.010
MH4A	100.92	NE99.300 SE98.298		NW98.021		1200mmØ OPSD-701.010
MH8A	102.10	W100.067 N100.384		S99.857		1200mmØ OPSD-701.010

MANHOLE FRAME AND COVERS PER CITY STD S25 AND S24

PROJECT
PROPOSED SELF STORAGE DEVELOPMENT
75 MICHAEL COWPLAND

PROJECT NO:
135470
DRAWN BY:
S.L. / D.D.
PROJECT MGR:
R.M.

CHECKED BY:
T.R.B.
APPROVED BY:
T.R.B.

SHEET TITLE
GENERAL PLAN OF SERVICES
SHEET NUMBER
C-001
ISSUE
6

CITY PLAN NO. 18885
CITY FILE NO. D07-12-22-0174
Last Saved: December 20, 2023, by ehennie
Printed: Wednesday, December 20, 2023, 12:02:12 PM by Eric Henne