

TOPOGRAPHIC PLAN OF SURVEY OF
PART OF LOT 31
CONCESSION 10
GEOGRAPHIC TOWNSHIP OF GOULBORN
CITY OF OTTAWA
 Surveyed by Annis, O'Sullivan, Vollebek Ltd.

Scale 1: 300

Distances shown on this plan are in metres and can be converted to feet by dividing by 0.3048

Surveyor's Certificate

I CERTIFY THAT:
 1. This survey and plan are correct and in accordance with the Survey Act and the Surveyors Act and the regulations made under them.
 2. The survey was completed on the 1st day of November, 2022.

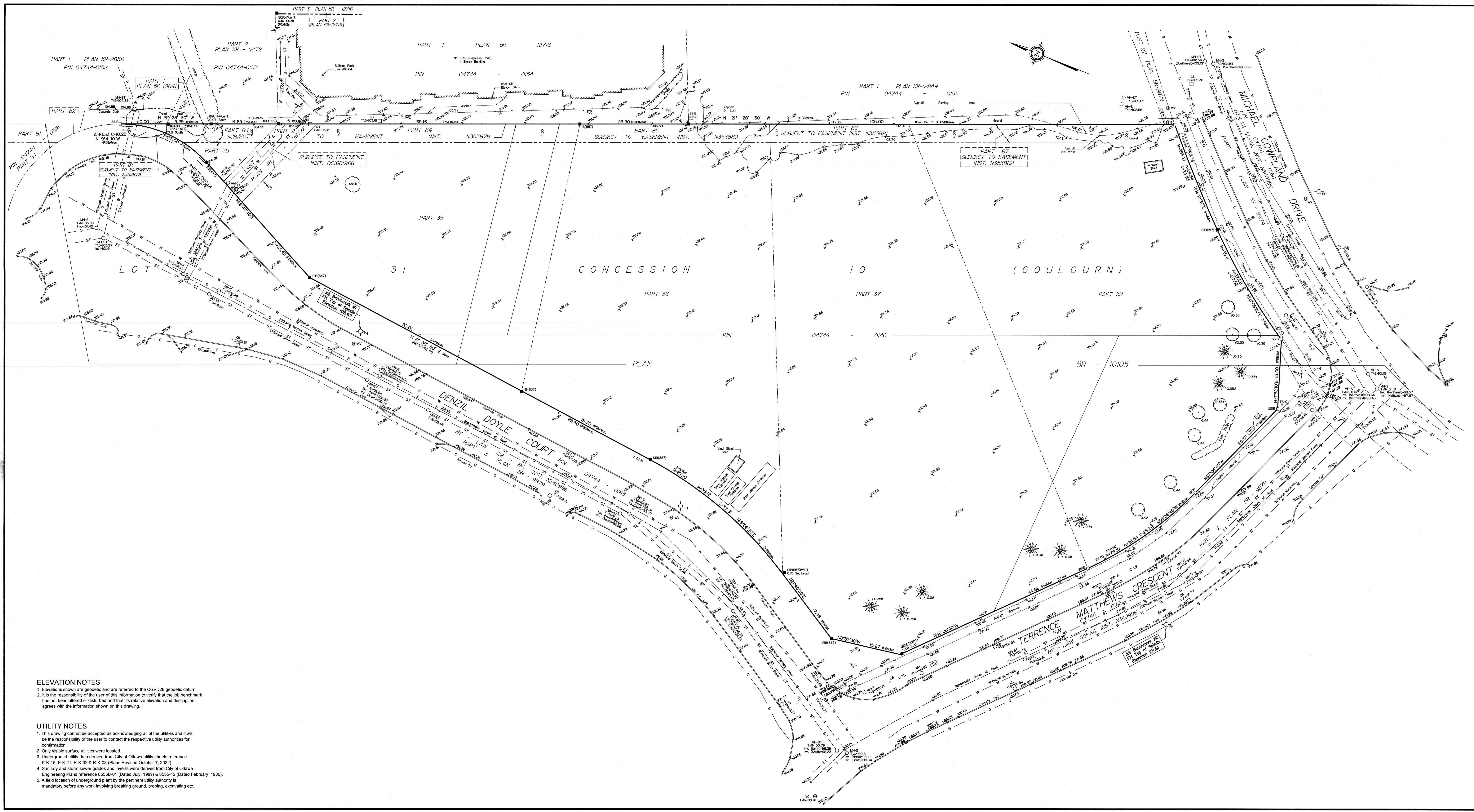
Nov 9 2022
 Date

J. E. Anderson
 Ontario Land Surveyor

Notes & Legend

Denotes	
—○—	Survey Monument Planted
—■—	Survey Monument Found
SIB	Standard Iron Bar
SSIB	Short Standard Iron Bar
IB	Iron Bar
IRB	Round Iron Bar
(WIT)	Witness
Meas.	Measured
(AOG)	Annis, O'Sullivan, Vollebek Ltd.
(PI)	Plan SR-10105
(P2)	(1692) Plan March 3, 2016
(P3)	Plan SR-12716
(P4)	Plan SR-12849
(P5)	Plan SR-12172
○	Deciduous Tree
★	Coniferous Tree
○ FH	Fire Hydrant
○ WV	Water Valve
○ SP	Water Stand Post
○ MH-ST	Maintenance Hole (Storm Sewer)
○ MH-S	Maintenance Hole (Sanitary)
○ MH-T	Maintenance Hole (Traffic)
○ MH-H	Maintenance Hole (Hydro)
○ MH	Maintenance Hole (Unidentified)
○ VC	Valve Chamber (Watermain)
—ST—	Underground Storm Sewer
—S—	Underground Sanitary Sewer
—W—	Underground Water
—G—	Underground Gas
—OW—	Overhead Wires
□ CB	Catch Basin
□ DI	Ditch Inlet
○ TB-B	Bell Terminal Box
○ TB-C	Cable Terminal Box
○ TB	Unidentified Terminal Box
○ LS	Light Standard
φ	Diameter
+ 65.00	Location of Elevations
+ 65.00	Top of Concrete Curb Elevation

Bearings are grid, derived from Can-Net 2016 Real Time Network GPS observations, MTM Zone 5 (76°30' West Longitude) NAD-83 (original).
 For bearing comparisons, a rotation of 0°00'57" counter-clockwise was applied to bearings on P1 & P2, a rotation of 0°04'20" counter-clockwise was applied to bearings on P3 & P4.



ELEVATION NOTES
 1. Elevations shown are geodetic and are referred to the CGVD28 geodetic datum.
 2. It is the responsibility of the user of this information to verify that the job benchmark has not been altered or disturbed and that its relative elevation and description agrees with the information shown on this drawing.

UTILITY NOTES
 1. This drawing cannot be accepted as acknowledging all of the utilities and it will be the responsibility of the user to contact the respective utility authorities for confirmation.
 2. Only visible surface utilities were located.
 3. Underground utility data derived from City of Ottawa utility sheets reference P-K-15, P-K-21, R-K-02 & R-K-03 (Plans Revised October 7, 2022).
 4. Sanitary and storm sewer grades and inverts were derived from City of Ottawa Engineering Plans reference 8558-01 (Dated July, 1989) & 8555-12 (Dated February, 1986).
 5. A field location of underground plant by the pertinent utility authority is mandatory before any work involving breaking ground, probing, excavating etc.

ASSOCIATION OF ONTARIO
 LAND SURVEYORS
 PLAN SUBMISSION FORM
V-36367

THIS PLAN IS NOT VALID UNLESS
 IT IS AN UNDOUBTED ORIGINAL
 COPY ISSUED BY THE SURVEYOR
 In accordance with
 Regulation 1102, Section 29 (3)

© Annis, O'Sullivan, Vollebek Ltd. 2022. THIS PLAN IS PROTECTED BY COPYRIGHT.
ANNIS, O'SULLIVAN, VOLLEBEK LTD.
 14 Concourse Gate, Suite 500
 Nepean, Ont. K2E 7S6
 Phone: (613) 727-8859 / Fax: (613) 727-1079
 Email: volleb@annis.com
 28, No. 2507-22, Hydroplan, P.L. 31, C. 60, T. F.