

NOTES:

DO NOT SCALE DRAWINGS;

NOTES ARE APPLICABLE TO ALL DRAWINGS IN THE SET;

Fotenn Consultants Inc. IS NOT RESPONSIBLE FOR ACCURACY OF BASE INFORMATION;

REFER TO CIVIL ENGINEERING DRAWINGS FOR GRADING & SITE SERVICING INFORMATION;

THE CONTRACTOR IS RESPONSIBLE FOR CONFIRMING SITE CONDITIONS AND REPORTING ANY DISCREPANCIES TO THE LANDSCAPE ARCHITECT;

THE CONTRACTOR IS RESPONSIBLE FOR CONFIRMING EXACT LOCATIONS OF ALL UNDERGROUND SERVICES AND OBTAINING CLEARANCE FROM ALL APPLICABLE UTILITIES. PROPOSED WORKS FOUND TO BE IN CONFLICT WITH UNDERGROUND SERVICES MAY BE ADJUSTED AT THE DIRECTION OF THE LANDSCAPE ARCHITECT;

LANDSCAPE ELEMENTS SHOWN ARE SUBJECT TO THE FINAL LOCATION OF UNDERGROUND SERVICES AND UTILITIES;

DO NOT INSTALL TREES ON PROPERTY / LOT LINES OR WITHIN DRAINAGE EASEMENTS;

PERFORM WORK IN ACCORDANCE WITH DETAILS AND SPECIFICATIONS;

ALL PLANT MATERIAL SHALL BE No. 1 NURSERY STOCK AND SHALL MEET OR EXCEED THE SPECIFICATION OF THE Canadian Standards for Nursery Stock, AS PUBLISHED BY THE Canadian Nursery Landscape Association;

SPECIES SUBSTITUTIONS ARE NOT PERMITTED WITHOUT PRIOR WRITTEN APPROVAL OF THE LANDSCAPE ARCHITECT;

ALL UN-PAVED SURFACES TO RECEIVE 150mm DEPTH TOPSOIL & SOD.

Copyright Reserved
The Copyrights to all designs and drawings are the property of Fotenn Consultants Inc. Unauthorized reproduction or use is forbidden. DO NOT SCALE DRAWING

Copyright réservés
Les droits d'auteur à tous les modèles et dessins sont la propriété de Fotenn Consultants Inc. Reproduction ou utilisation non autorisée est interdite. NE PAS L'ÉCHELLE DE DESSIN

Client / Client

ROHIT

key plan / plan repère

legend / légende

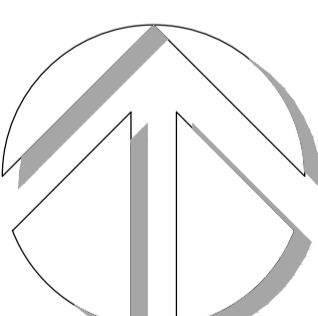
SYMBOLS LEGEND:

- SCOPE OF APPLICATION
- EXTENTS OF UNDERGROUND PARKING GARAGE
- PROPERTY LINE
- EXISTING TREES TO REMAIN
- CRITICAL ROOT ZONE
- SMALL DECIDUOUS TREE (REFER TO PLANTING SCHEDULE FOR SPECIES AND QUANTITIES)
- LARGE DECIDUOUS TREE (REFER TO PLANTING SCHEDULE FOR SPECIES AND QUANTITIES)
- CONIFEROUS TREES (REFER TO PLANTING SCHEDULE FOR SPECIES AND QUANTITIES)
- 2.1m HIGH BLACK CHAIN LINK FENCE
- 0.45m HIGH RETAINING WALL

01	Issue for SPA	2022/12/16
00	Issue for ZBLA	2022/11/15

FOTENN Planning + Design
396 Cooper Street, Suite 300
Ottawa, ON, CANADA K2P 2H7
613.730.5709
fotenn.com

north / le nord stamp / le cachet



project / projet

3430 CARLING AVENUE

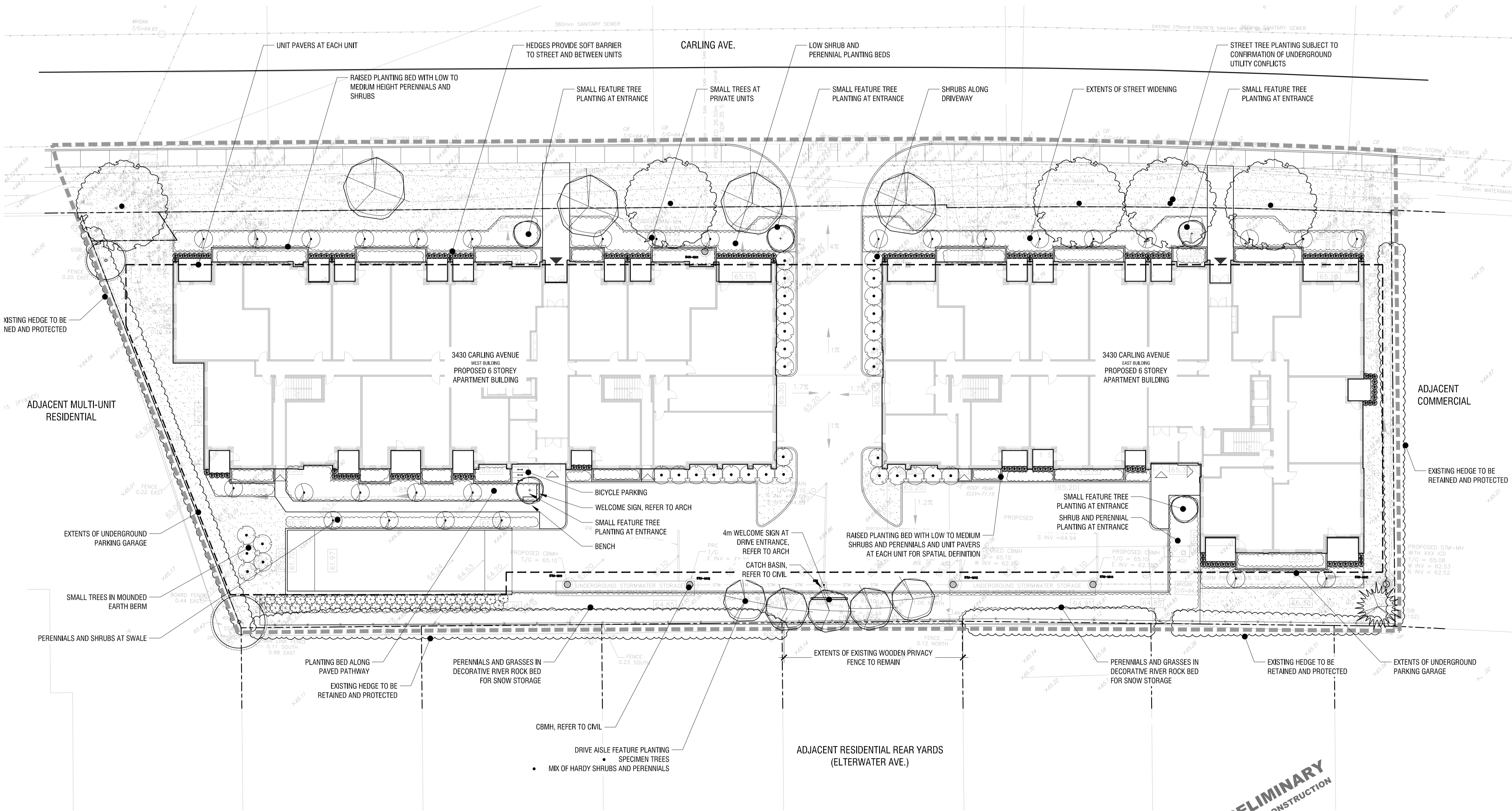
drawing / dessin

LANDSCAPE PLAN

designed / conçu BM / EM	drawn / dessiné BM / EM	reviewed / examiné DF
date Nov. 2022		project number / No. du projet

drawing number / No. du dessin

L1 of 4



PRELIMINARY
NOT FOR CONSTRUCTION

1 LANDSCAPE PLAN
L1 1:250

PLOT INFORMATION: DWG NAME: P:\PROJECTS\3430 Carling Ave\3430 Carling Ave\3430 Carling Ave.dwg PLOT DATE: 2022-12-19 11:42 AM SHEET SIZE: 3048x4254 (11.63x16.42 M) PLOTTED BY: Emily Anderson LAST DATED BY: emiliana

ROHIT

key plan / plan repère

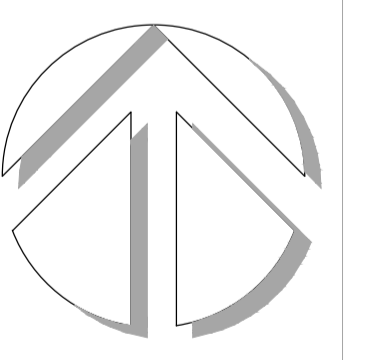
legend / légende

- SCOPE OF APPLICATION
- EXTENTS OF UNDERGROUND PARKING GARAGE
- PROPERTY LINE
- EXISTING TREES TO REMAIN
- CRITICAL ROOT ZONE
- SMALL DECIDUOUS TREE (REFER TO PLANTING SCHEDULE FOR SPECIES AND QUANTITIES)
- LARGE DECIDUOUS TREE (REFER TO PLANTING SCHEDULE FOR SPECIES AND QUANTITIES)
- CONIFEROUS TREES (REFER TO PLANTING SCHEDULE FOR SPECIES AND QUANTITIES)
- 2.1m HIGH BLACK CHAIN LINK FENCE
- 0.45m HIGH RETAINING WALL

01	Issue for SPA	2022/12/16
00	Issue for ZBLA	2022/11/15
rev'n	description / la description	yyyy/mm/dd

FOTENN Planning + Design
 396 Cooper Street, Suite 300 613.730.5709
 Ottawa, ON, CANADA K2P 2H7 fotenn.com

north / le nord stamp / le cachet



project / projet

3430 CARLING AVENUE

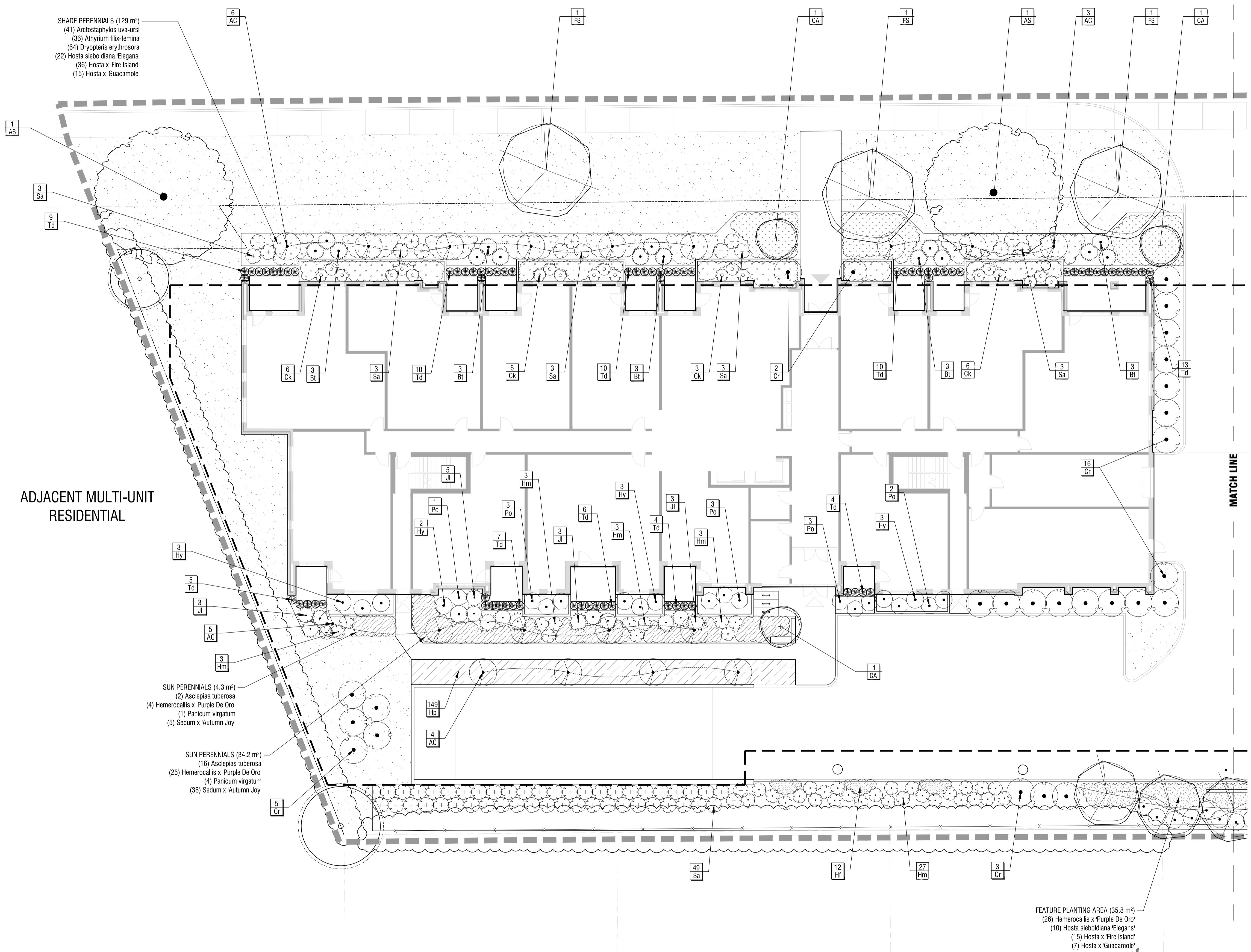
drawing / dessin

LANDSCAPE PLAN

designed / conçu BM / EM	drawn / dessiné BM / EM	reviewed / examiné DF
date Nov. 2022		project number / No. du projet

drawing number / No. du dessin

L2 of 4



ADJACENT MULTI-UNIT RESIDENTIAL

SHADE PERENNIALS (129 m²)
 (41) Arctostaphylos uva-ursi
 (36) Athyrium filix-femina
 (64) Dryopteris erythrosora
 (22) Hosta sieboldiana 'Elegans'
 (36) Hosta x 'Fire Island'
 (15) Hosta x 'Guacamole'

SUN PERENNIALS (4.3 m²)
 (2) Asclepias tuberosa
 (4) Hemerocallis x 'Purple De Oro'
 (1) Panicum virgatum
 (5) Sedum x 'Autumn Joy'

SUN PERENNIALS (34.2 m²)
 (16) Asclepias tuberosa
 (25) Hemerocallis x 'Purple De Oro'
 (4) Panicum virgatum
 (36) Sedum x 'Autumn Joy'

FEATURE PLANTING AREA (35.8 m²)
 (26) Hemerocallis x 'Purple De Oro'
 (10) Hosta sieboldiana 'Elegans'
 (15) Hosta x 'Fire Island'
 (7) Hosta x 'Guacamole'

PRELIMINARY NOT FOR CONSTRUCTION

1 PLANTING PLAN - WEST BUILDING
L2 1:150

PLOT INFORMATION: DWG NAME: P:\PROJECTS\3430 Carling Ave\3430 Carling Ave\3430 Carling Ave.dwg PLOT DATE: 2022-12-19 11:15:47 AM SHEET NO: 02 OF 03 PLOT DATE: 2022-12-19 11:15:47 AM SHEET NO: 02 OF 03 PLOT DATE: 2022-12-19 11:15:47 AM SHEET NO: 02 OF 03

ROHIT

key plan / plan repère

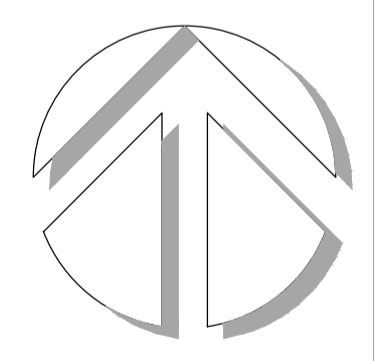
Legend / légende

- SCOPE OF APPLICATION
- EXTENTS OF UNDERGROUND PARKING GARAGE
- PROPERTY LINE
- EXISTING TREES TO REMAIN
- CRITICAL ROOT ZONE
- SMALL DECIDUOUS TREE (REFER TO PLANTING SCHEDULE FOR SPECIES AND QUANTITIES)
- LARGE DECIDUOUS TREE (REFER TO PLANTING SCHEDULE FOR SPECIES AND QUANTITIES)
- CONIFEROUS TREES (REFER TO PLANTING SCHEDULE FOR SPECIES AND QUANTITIES)
- 2.1m HIGH BLACK CHAIN LINK FENCE
- 0.45m HIGH RETAINING WALL

01	Issue for SPA	2022/12/16
00	Issue for ZBLA	2022/11/15
rev'n	description / la description	yyyy/mm/dd

FOTENN Planning + Design
 395 Cooper Street, Suite 300
 Ottawa, ON, CANADA K2P 2H7
 613.730.5709
 fotenn.com

north / le nord stamp / le cachet



project / projet

3430 CARLING AVENUE

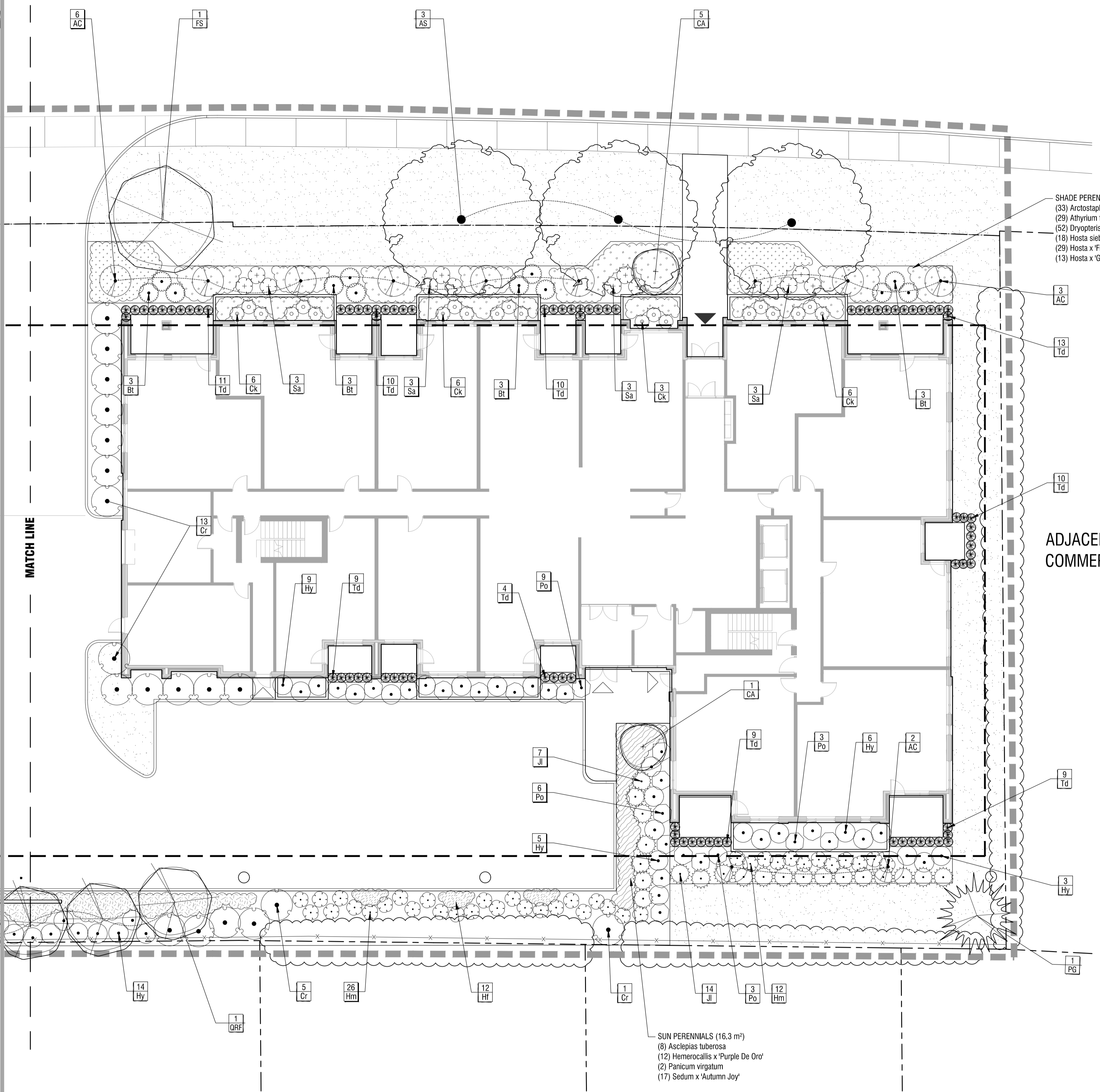
drawing / dessin

LANDSCAPE PLAN

designed / conçu BM / EM	drawn / dessiné BM / EM	reviewed / examiné DF
date Nov. 2022		project number / No. du projet

drawing number / No. du dessin

L3 of 4



SHADE PERENNIALS (104 m²)
 (33) *Arctostaphylos uva-ursi*
 (29) *Athyrium filix-femina*
 (52) *Dryopteris erythrosora*
 (18) *Hosta sieboldiana 'Elegans'*
 (29) *Hosta x 'Fire Island'*
 (13) *Hosta x 'Guacamole'*

ADJACENT COMMERCIAL

SUN PERENNIALS (16.3 m²)
 (8) *Asclepias tuberosa*
 (12) *Hemerocallis x 'Purple De Oro'*
 (2) *Panicum virgatum*
 (17) *Sedum x 'Autumn Joy'*

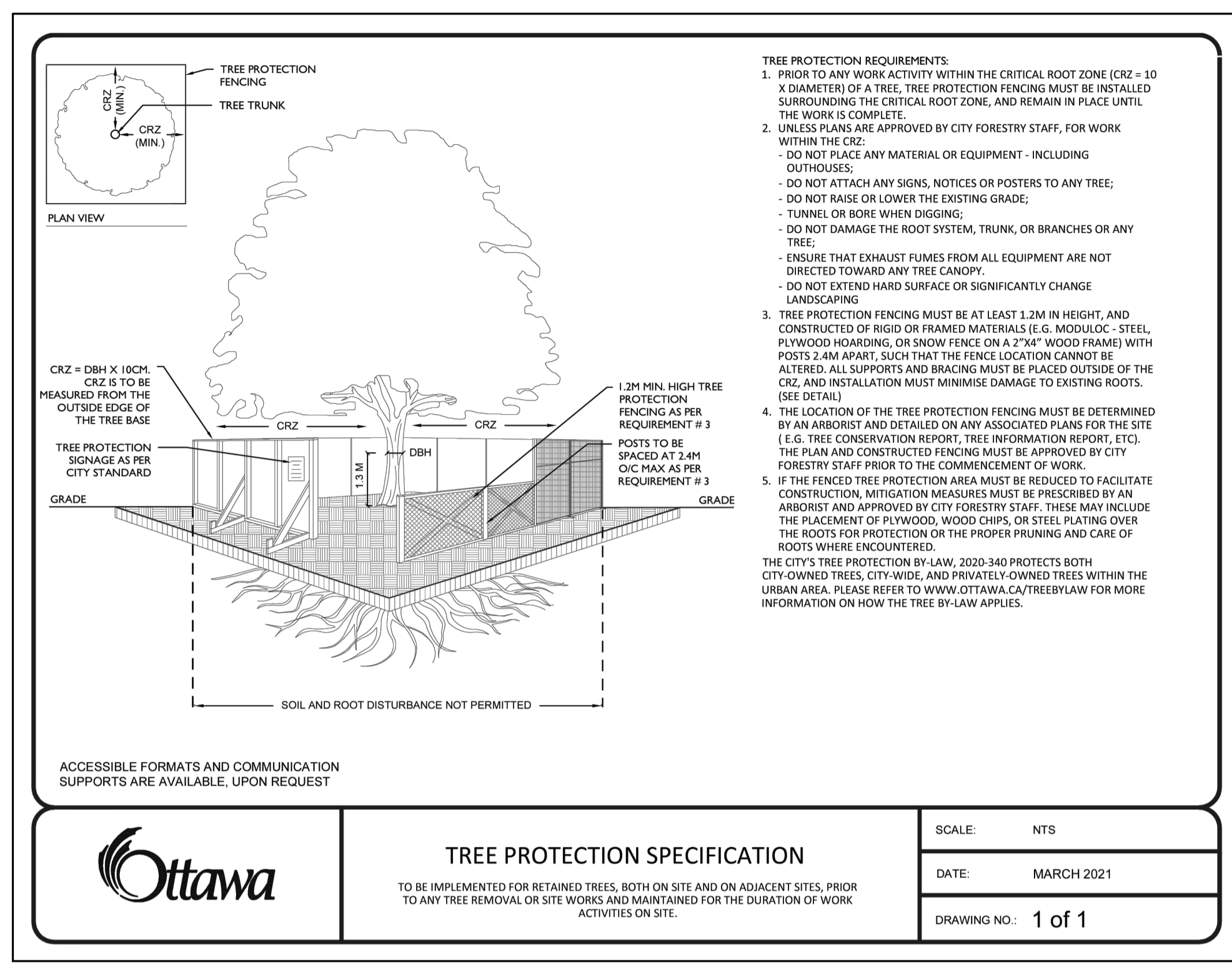
PLANTING SCHEDULE

KEY	QTY.	BOTANICAL NAME	COMMON NAME	SIZE / CONDITION / SPACING
DECIDUOUS TREES				
AS	5	<i>Acer saccharum</i>	Sugar Maple	70mm cal. / W.B.
FS	5	<i>Fagus sylvatica 'Tricolor'</i>	Tricolor Beech	50mm cal. / W.B.
QRF	5	<i>Quercus robur 'Fastigiata'</i>	Pyramidal English Oak	70mm cal. / W.B.
CONIFEROUS TREES				
PG	6	<i>Picea glauca</i>	White Spruce	175cm ht. / W.B.
DECIDUOUS SHRUBS				
AC	29	<i>Amelanchier canadensis</i>	Shadblow Serviceberry	100cm ht. / specimen quality / 2.0m spacing
Au	102	<i>Arctostaphylos uva-ursi</i>	Bearberry	#1 POT / 75cm o.c.
Bt	27	<i>Berberis thunbergii 'Concorde'</i>	Purpleleaf Japanese Barberry	40cm ht. / 45cm o.c.
CA	5	<i>Cornus alternifolia</i>	Pagoda Dogwood	100cm ht. / specimen quality / 5.0m sp.
Cr	45	<i>Cornus sericea</i>	Red Osier Dogwood	100cm ht. / specimen quality / 1.75m sp.
Ck	42	<i>Cornus sericea 'Kelsey'</i>	Kelsey Dwarf Dogwood	30cm ht. / 45cm o.c.
Hm	48	<i>Hydrangea macrophylla</i>	Twist & Shout® Hydrangea	50cm ht. / 90cm sp.
Hy	48	<i>Hydrangea paniculata</i>	Peegee Hydrangea	50cm ht. / 90cm sp.
Po	33	<i>Physocarpus opulifolius 'Dart's Gold'</i>	Dart's Gold Ninebark	#3 pot / 90cm sp.
Sa	54	<i>Symphoricarpos albus</i>	Snowberry	50cm ht. / 90cm sp.
EVERGREEN SHRUBS				
Jh	35	<i>Juniperus horizontalis 'Limeglow'</i>	Limeglow Juniper	#2 Pot / 100cm sp.
T	163	<i>Taxus</i>	Yew	#3 Pot / 75cm sp.
PERENNIALS & GRASSES				
Af	76	<i>Athyrium filix-femina</i>	Lady Fern	#1 Pot / 90cm sp.
At	27	<i>Asclepias tuberosa</i>	Showy Milkweed	#1 Pot / 45cm o.c.
De	129	<i>Dryopteris erythrosora</i>	Autumn Fern	#1 Pot / 60cm o.c.
He	218	<i>Hemerocallis 'Purple De Oro'</i>	Purple D'Oro Daylily	#1 Pot / 35cm o.c.
Hs	115	<i>Hosta x 'Fire Island'</i>	Fire Island Hosta	#1 Pot / 80cm o.c.
Hs	61	<i>Hosta sieboldiana 'Elegans'</i>	Elegans Hosta	#1 Pot / 100cm o.c.
Hp	44	<i>Hosta x 'Guacamole'</i>	Guacamole Hosta	#1 Pot / 100cm o.c.
Pv	8	<i>Panicum virgatum</i>	Switch Grass	#2 Pot / 90cm sp.
S	59	<i>Sedum</i>	Stonecrop	#1 Pot

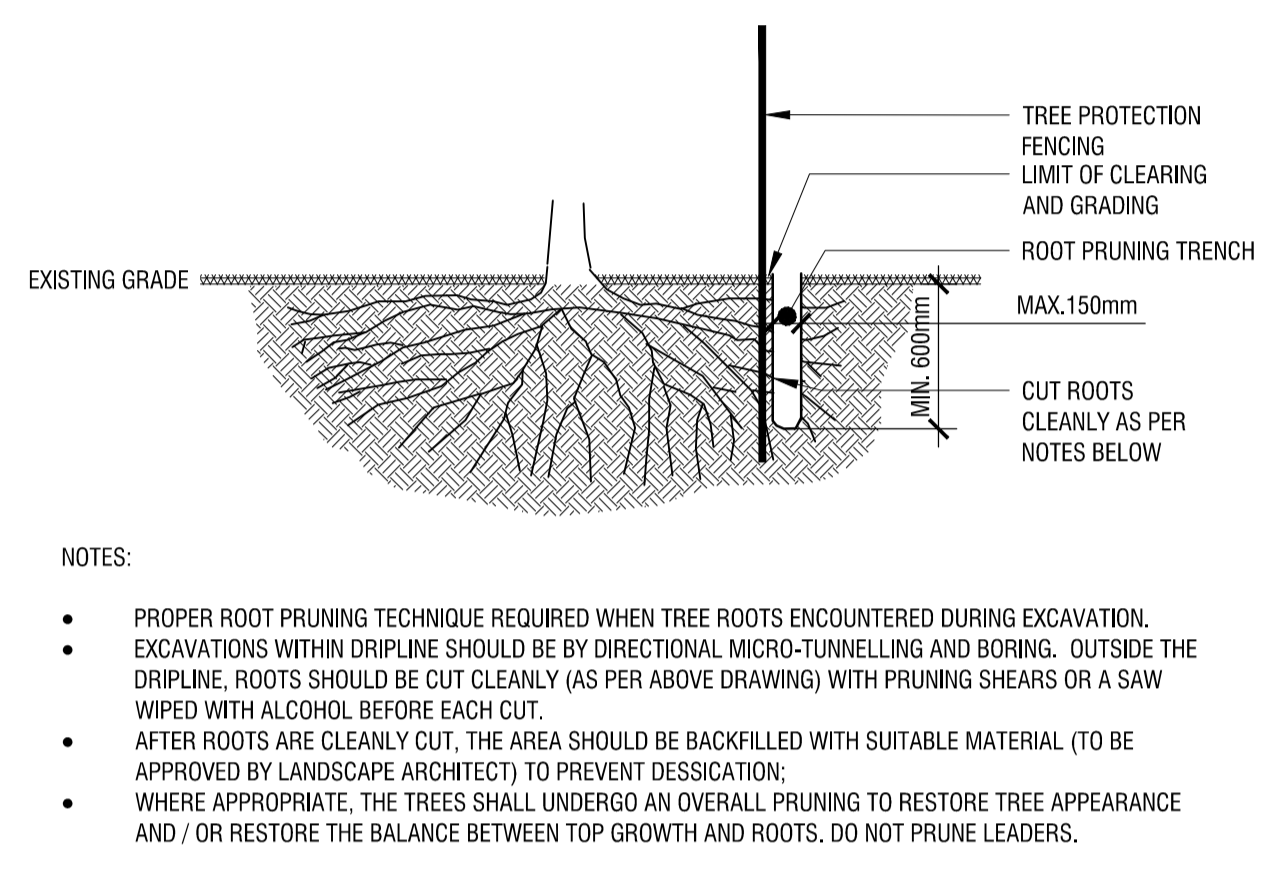
PRELIMINARY
 NOT FOR CONSTRUCTION

1 PLANTING PLAN - EAST BUILDING
L3 1:150

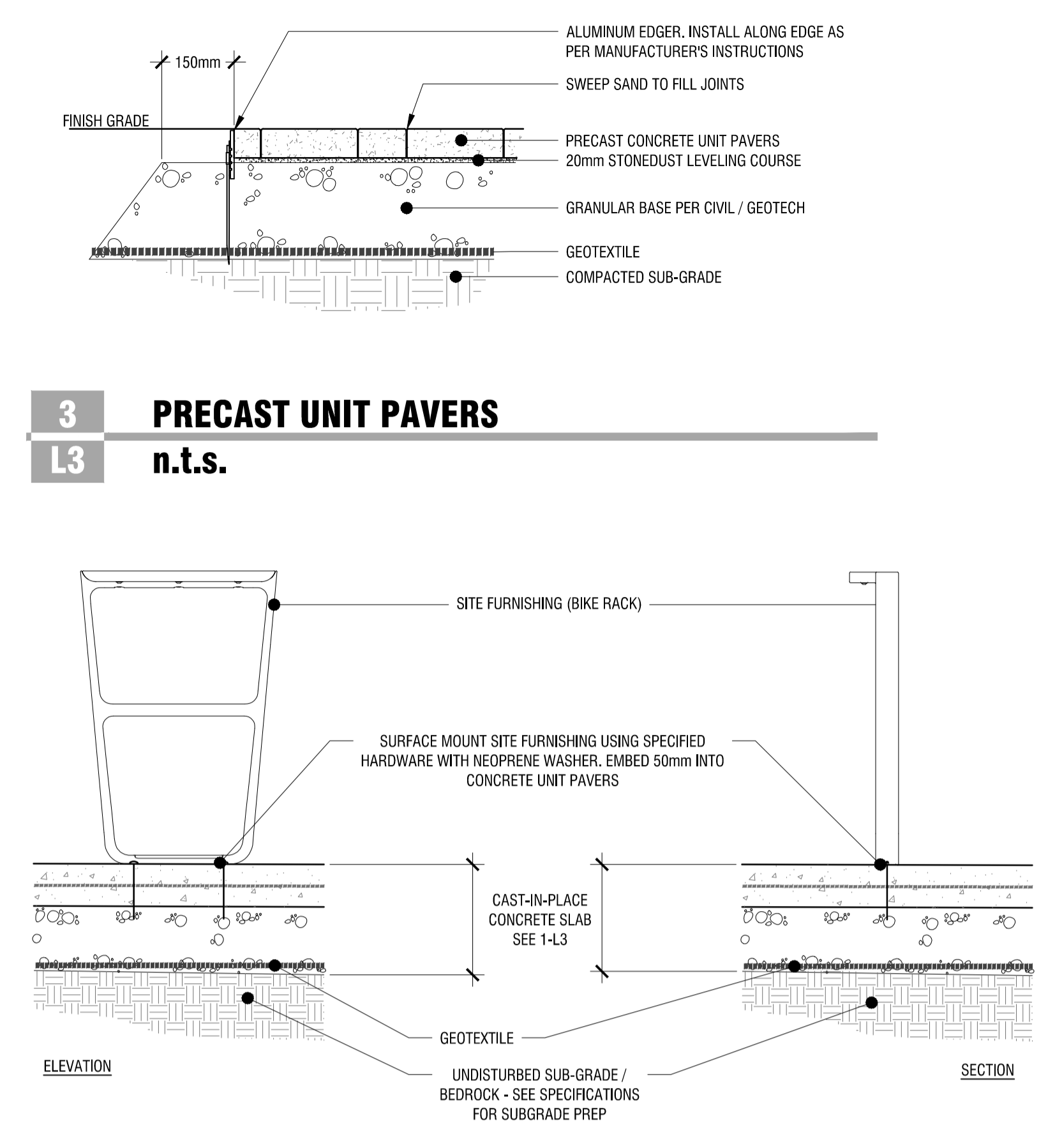
PLOT INFORMATION: DWG NAME: P:\PROJECTS\3430 Carling Avenue_Landscape\DESIGN\RECORDMENTS\3430 Carling_Avenue_Landscape.dwg PLOT DATE: 2022-12-19 11:53:33 AM SHEET SIZE: 3048x2109 (11.69x8.29m) PLOTTED BY: Emily Anderson LAST DATE BY: emiliana



1
T1 **TREE PROTECTION FENCING**
n.t.s.

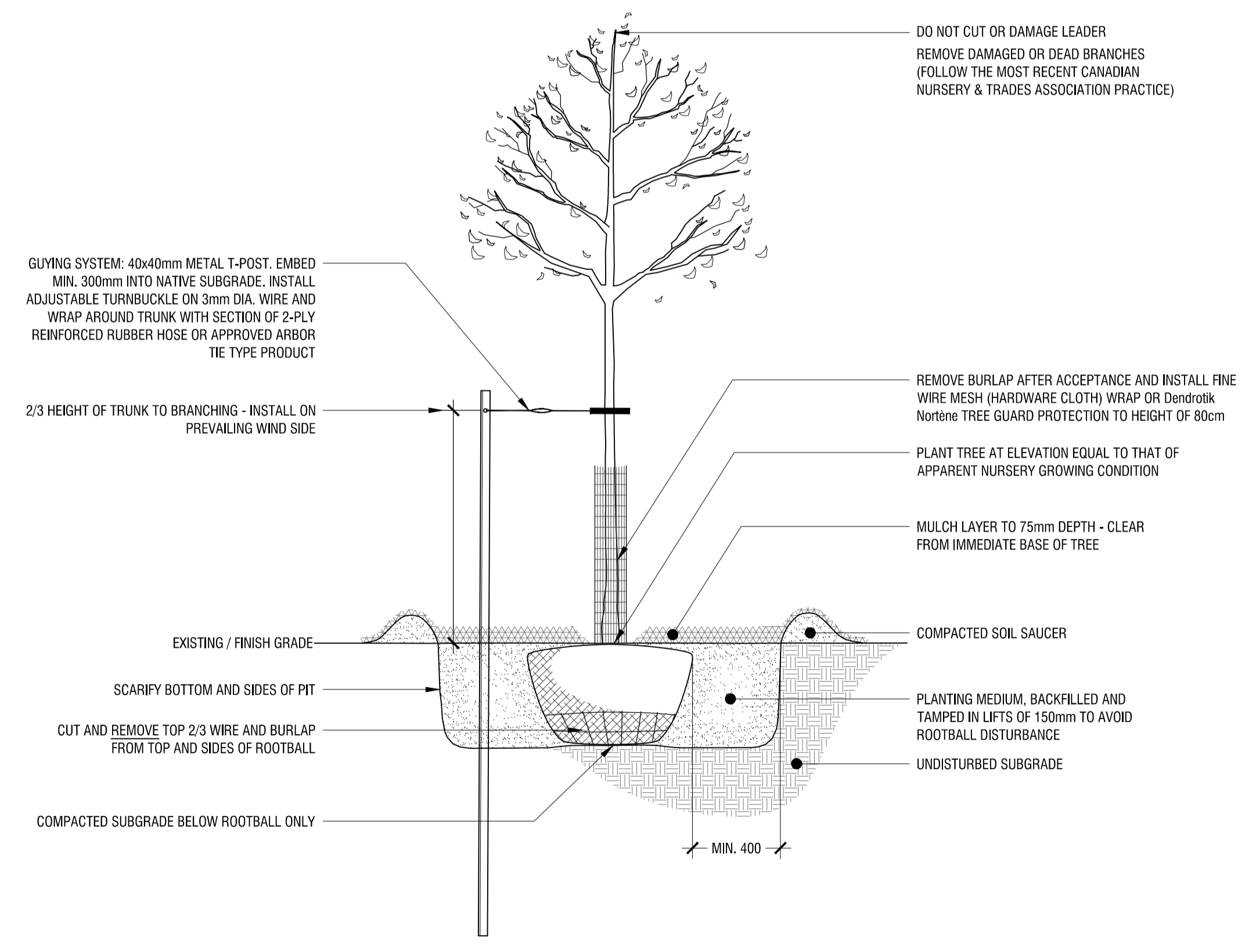


2
T1 **ROOT PRUNING DETAIL**
n.t.s.

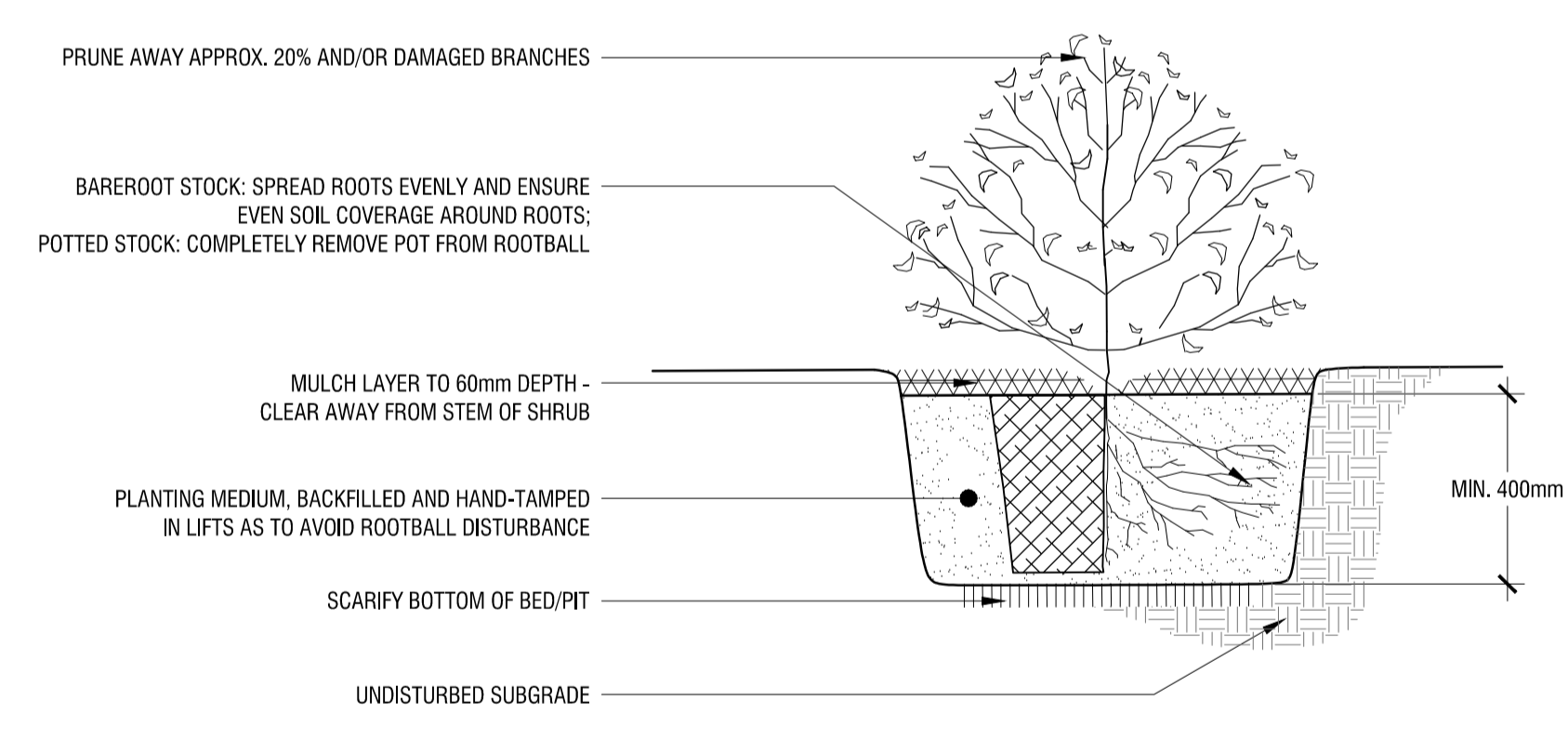


3
L3 **PRECAST UNIT PAVERS**
n.t.s.

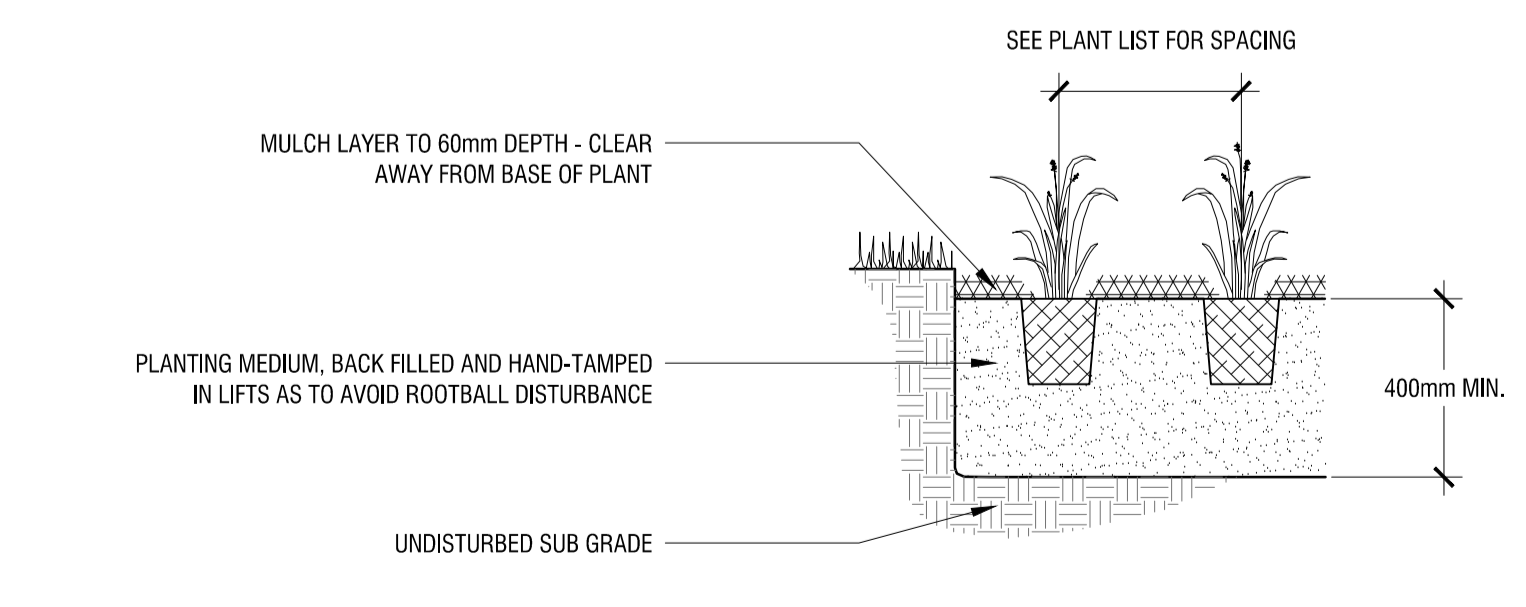
4
L3 **SURFACE MOUNTED BIKE RACK AT C.I.P. CONCRETE PAVING**
n.t.s.



5
L3 **DECIDUOUS TREE PLANTING**
n.t.s.



6
L3 **SHRUB PLANTING**
n.t.s.



5
L3 **PERENNIAL PLANTING**
n.t.s.

rev'n	description / la description	yyyy/mm/dd
01	Issue for SPA	2022/12/16
00	Issue for ZBLA	2022/11/15

FOTENN Planning + Design
 396 Cooper Street, Suite 300
 Ottawa, ON, CANADA K2P 2H7
 613.730.5709
 fotenn.com

north / le nord stamp / le cachet

project / projet

3430 CARLING AVENUE

drawing / dessin

LANDSCAPE PLAN

designed / conçu BM / EM	drawn / dessiné BM / EM	reviewed / examiné DF
date Nov. 2022		project number / No. du projet