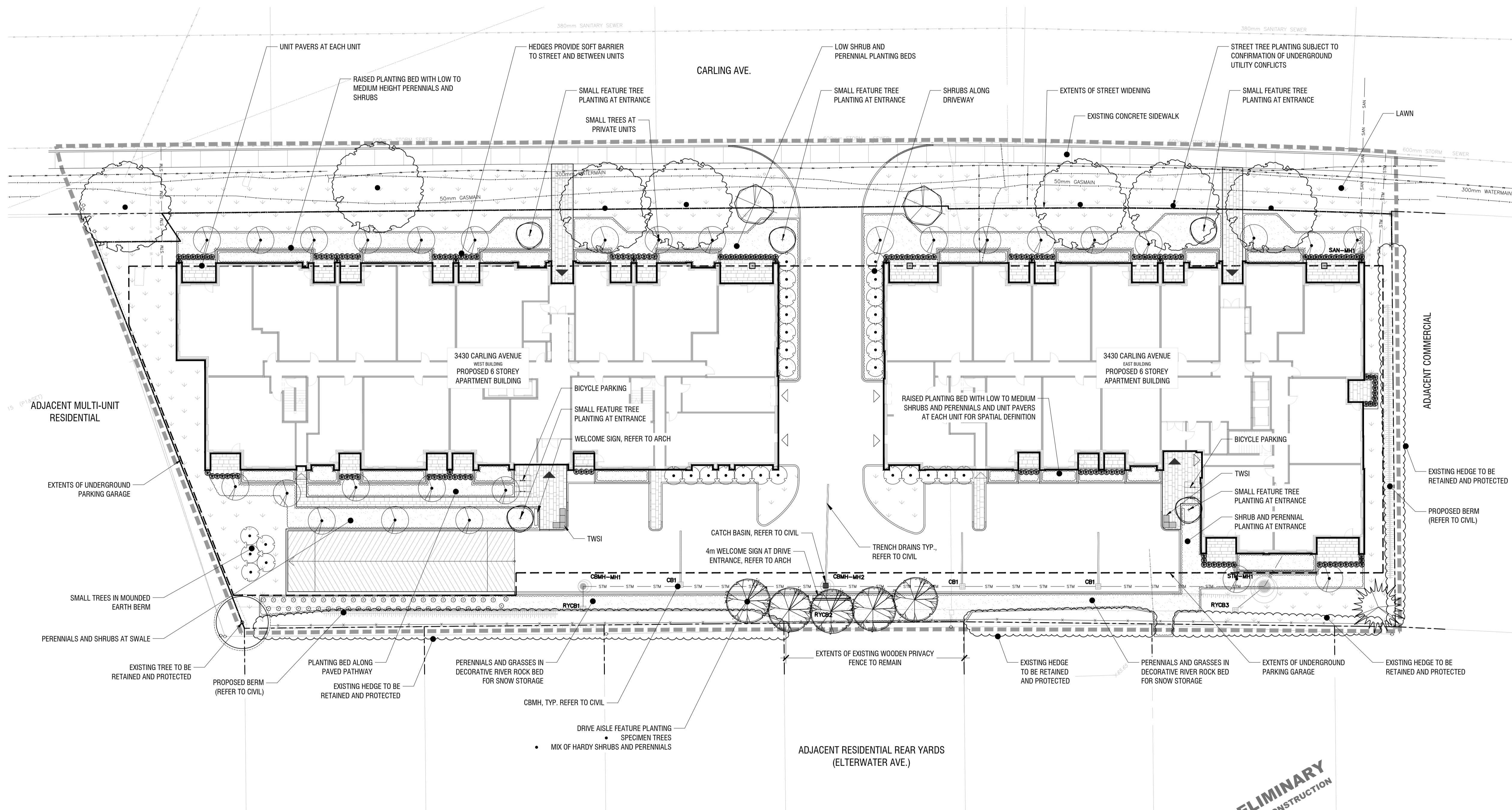


NOTES:

DO NOT SCALE DRAWINGS;
 NOTES ARE APPLICABLE TO ALL DRAWINGS IN THE SET;
 Fotenn Consultants Inc. IS NOT RESPONSIBLE FOR ACCURACY OF BASE INFORMATION;
 REFER TO CIVIL ENGINEERING DRAWINGS FOR GRADING & SITE SERVICING INFORMATION;
 THE CONTRACTOR IS RESPONSIBLE FOR CONFIRMING SITE CONDITIONS AND REPORTING ANY DISCREPANCIES TO THE LANDSCAPE ARCHITECT;
 THE CONTRACTOR IS RESPONSIBLE FOR CONFIRMING EXACT LOCATIONS OF ALL UNDERGROUND SERVICES AND OBTAINING CLEARANCE FROM ALL APPLICABLE UTILITIES. PROPOSED WORKS FOUND TO BE IN CONFLICT WITH UNDERGROUND SERVICES MAY BE ADJUSTED AT THE DIRECTION OF THE LANDSCAPE ARCHITECT;
 LANDSCAPE ELEMENTS SHOWN ARE SUBJECT TO THE FINAL LOCATION OF UNDERGROUND SERVICES AND UTILITIES;
 DO NOT INSTALL TREES ON PROPERTY / LOT LINES OR WITHIN DRAINAGE EASEMENTS;
 PERFORM WORK IN ACCORDANCE WITH DETAILS AND SPECIFICATIONS;
 ALL PLANT MATERIAL SHALL BE No. 1 NURSERY STOCK AND SHALL MEET OR EXCEED THE SPECIFICATION OF THE Canadian Standards for Nursery Stock, AS PUBLISHED BY THE Canadian Nursery Landscape Association;
 SPECIES SUBSTITUTIONS ARE NOT PERMITTED WITHOUT PRIOR WRITTEN APPROVAL OF THE LANDSCAPE ARCHITECT;
 ALL UN-PAVED SURFACES TO RECEIVE 150mm DEPTH TOPSOIL & SOD.

STANDARDS FOR TREE PLANTING:

NO PLANTING ON CORNERS OR ANYWHERE WHERE IT WOULD CREATE A SIGHT LINE CONCERN;
 MAINTAIN A MINIMUM DISTANCE OF 2.5m FROM THE CURB FOR DECIDUOUS TREES AND 4.5m FOR CONIFEROUS TREES;
 MAINTAIN A MINIMUM DISTANCE OF 1.5m FOR DECIDUOUS (4.5m FOR CONIFERS) FROM ANY SIDEWALK OR PRIVATE WALKWAY;
 MAINTAIN A MINIMUM DISTANCE OF 1.2m FROM ALL DRIVEWAYS;
 MAINTAIN A MINIMUM DISTANCE OF 2.5m FROM COMMUNITY MAILBOXES, LIGHT STANDARDS, FIRE HYDRANTS AND NO PLANTING IN FRONT OF HYDRANTS;
 MAINTAIN A MINIMUM DISTANCE OF 3.0m FROM ALL HYDRO TRANSFORMERS;
 MAINTAIN A MINIMUM DISTANCE OF 1.0m FROM ALL UNDERGROUND SERVICES;
 MAINTAIN A MINIMUM DISTANCE OF 1.0m FROM ALL BELL AND CABLE BOXES;
 MAINTAIN A MINIMUM DISTANCE OF 10.0 FROM BUS SHELTERS



Copyright Reserved
 The Copyrights to all designs and drawings are the property of Fotenn Consultants Inc. Unauthorised reproduction or use is forbidden. DO NOT SCALE DRAWING
 Copyright réservés
 Les droits d'auteur à tous les modèles et dessins sont la propriété de Fotenn Consultants Inc. Reproduction ou utilisation non autorisée est interdite. NE PAS L'ÉCHELLE DE DESSIN
 Client / Client



key plan / plan repère

- Legend / légende
- SCOPE OF WORK
 - - - EXTENTS OF UNDERGROUND PARKING GARAGE
 - PROPERTY LINE
 - EXISTING TREES TO REMAIN
 - CRITICAL ROOT ZONE
 - DECIDUOUS TREE PLANTING (REFER TO PLANTING SCHEDULE FOR SPECIES AND QUANTITIES)
 - CONIFEROUS TREE AND SHRUB PLANTING (REFER TO PLANTING SCHEDULE FOR SPECIES AND QUANTITIES)
 - PLANTING AREA
 - LAWN
 - 2.1m HIGH BLACK CHAIN LINK FENCE
 - 0.45m HIGH RETAINING WALL
 - BIKE RACK

rev'n	description / la description	yyyy/mm/dd
02	re-issue for SPA	2023/03/31
01	issue for SPA	2022/12/16
00	issue for ZBLA	2022/11/15

FOTENN Planning + Design
 396 Cooper Street, Suite 300
 Ottawa, ON, CANADA K2P 2H7
 613.730.5709
 fotenn.com

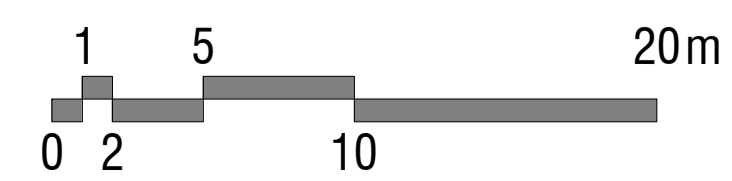
north / le nord stamp / le cachet

project / projet
3430 CARLING AVENUE
 drawing / dessin

LANDSCAPE PLAN
 designed / conçu **BM / EM** drawn / dessiné **BM / EM** reviewed / examiné **DF**
 date **Nov. 2022** project number / No. du projet

drawing number / No. du dessin
L1 of 4

1 LANDSCAPE PLAN
L1 1:250



PRELIMINARY
 NOT FOR CONSTRUCTION

PLOT INFORMATION: DWG NAME: P:\PROJECTS\3430 CARLING AVENUE\LANDSCAPE\DESIGN\3430 CARLING AVENUE_LANDSCAPE\3430 CARLING AVENUE_LANDSCAPE.dwg PLOT DATE: 2023-04-03 13:09:09 PLOT SIZE: ISO (millimeter) (964.00 x 641.00 MM) PLOTTED BY: Bevan Mahabadi LAST SAVED BY: Bevan Mahabadi



- legend / légende
- SCOPE OF WORK
 - - - EXTENTS OF UNDERGROUND PARKING GARAGE
 - PROPERTY LINE
 - DECIDUOUS TREE PLANTING (REFER TO PLANTING SCHEDULE FOR SPECIES AND QUANTITIES)
 - CONIFEROUS TREE AND SHRUB PLANTING (REFER TO PLANTING SCHEDULE FOR SPECIES AND QUANTITIES)
 - LAWN
 - 0.45m HIGH RETAINING WALL

rev'n	description / la description	yyyy/mm/dd
02	re-issue for SPA	2023/03/31
01	issue for SPA	2022/12/16
00	issue for ZBLA	2022/11/15

FOTENN Planning + Design
 395 Cooper Street, Suite 300
 Ottawa, ON, CANADA K2P 2H7
 613.730.5709
 fotenn.com

north / le nord stamp / le cachet

project / projet

3430 CARLING AVENUE

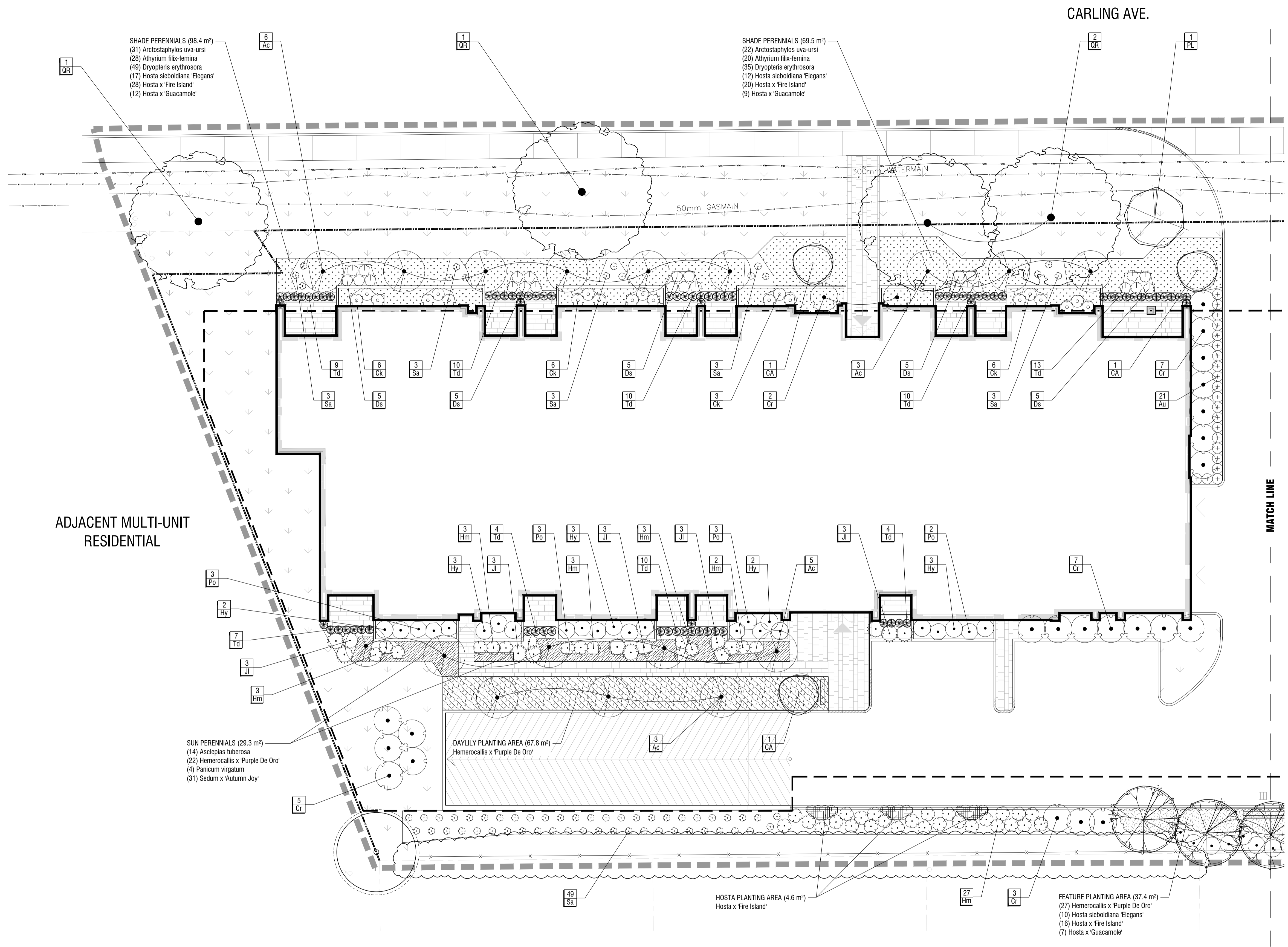
drawing / dessin

LANDSCAPE PLAN

designed / conçu	drawn / dessiné	reviewed / examiné
BM / EM	BM / EM	DF
date	project number / No. du projet	
Nov. 2022		

drawing number / No. du dessin

L2 of 4



1 PLANTING PLAN - WEST BUILDING
L2 1:150

PRELIMINARY
 NOT FOR CONSTRUCTION

PLOT INFORMATION: DWG NAME: P:\PROJECTS\3430 CARLING AVENUE\LANDSCAPE DESIGN\DESIGN\LANDSCAPE\3430 CARLING_AVENUE_LANDSCAPE.DWG PLOT DATE: 2023-04-03 13:52:56 PW: SHEET SIZE: ISO full based at (984.0x 641.0) MM PLOTTED BY: Beama Mahabadi LAST SAVED BY: Beama Mahabadi

Client / Client



key plan / plan repère

legend / légende

- SCOPE OF WORK
- - - EXTENTS OF UNDERGROUND PARKING GARAGE
- PROPERTY LINE
- DECIDUOUS TREE PLANTING
(REFER TO PLANTING SCHEDULE FOR SPECIES AND QUANTITIES)
- CONIFEROUS TREE AND SHRUB PLANTING
(REFER TO PLANTING SCHEDULE FOR SPECIES AND QUANTITIES)
- LAWN
- 0.45m HIGH RETAINING WALL

PLANT SCHEDULE

TREES	QTY	BOTANICAL NAME	COMMON NAME	SIZE / CONDITION / SPACING
CA	7	Cornus alternifolia	Pagoda Dogwood	50mm cal. / W.B. (single stem, tree form)
PD	3	Picea glauca 'Densata'	Black Hills White Spruce	175cm ht. / W.B.
PL	2	Pyrus calleryana 'Chanticleer'	Chanticleer Callery Pear	50mm cal. / W.B.
OF	5	Quercus robur fastigiata	Pyramidal English Oak	70mm cal. / W.B.
OR	9	Quercus rubra	Red Oak	70mm cal. / W.B.

SHRUBS	QTY	BOTANICAL NAME	COMMON NAME	SIZE / CONDITION / SPACING
Ac	30	Amelanchier canadensis	Canadian Serviceberry	100cm ht. / specimen quality / 2.0m sp.
Au	42	Arctostaphylos uva-ursi	Kinnikinnick	#1 Pot / 75cm sp.
Cr	44	Cornus sericea	Red Twig Dogwood	#3 Pot / Refer to plan for spacing
Ck	42	Cornus sericea 'Kelsey'	Kelsey's Dwarf Red Twig Dogwood	#2 Pot / Refer to plan for spacing
Ds	45	Diervilla x splendens 'El Madrigal'	Firefly Nightglow Bush Honeysuckle	#2 Pot / Refer to plan for spacing
Hm	80	Hydrangea macrophylla	Largeleaf Hydrangea	#2 Pot / Refer to plan for spacing
Hy	50	Hydrangea paniculata	Panicle Hydrangea	#2 Pot / Refer to plan for spacing
Jl	35	Juniperus horizontalis 'Limelight'	Limelight Creeping Juniper	#2 Pot / Refer to plan for spacing
Po	32	Physocarpus opulifolius 'Dart's Gold'	Dart's Gold Ninebark	#2 Pot / Refer to plan for spacing
Sa	76	Symphoricarpos albus	Common White Snowberry	#2 Pot / Refer to plan for spacing

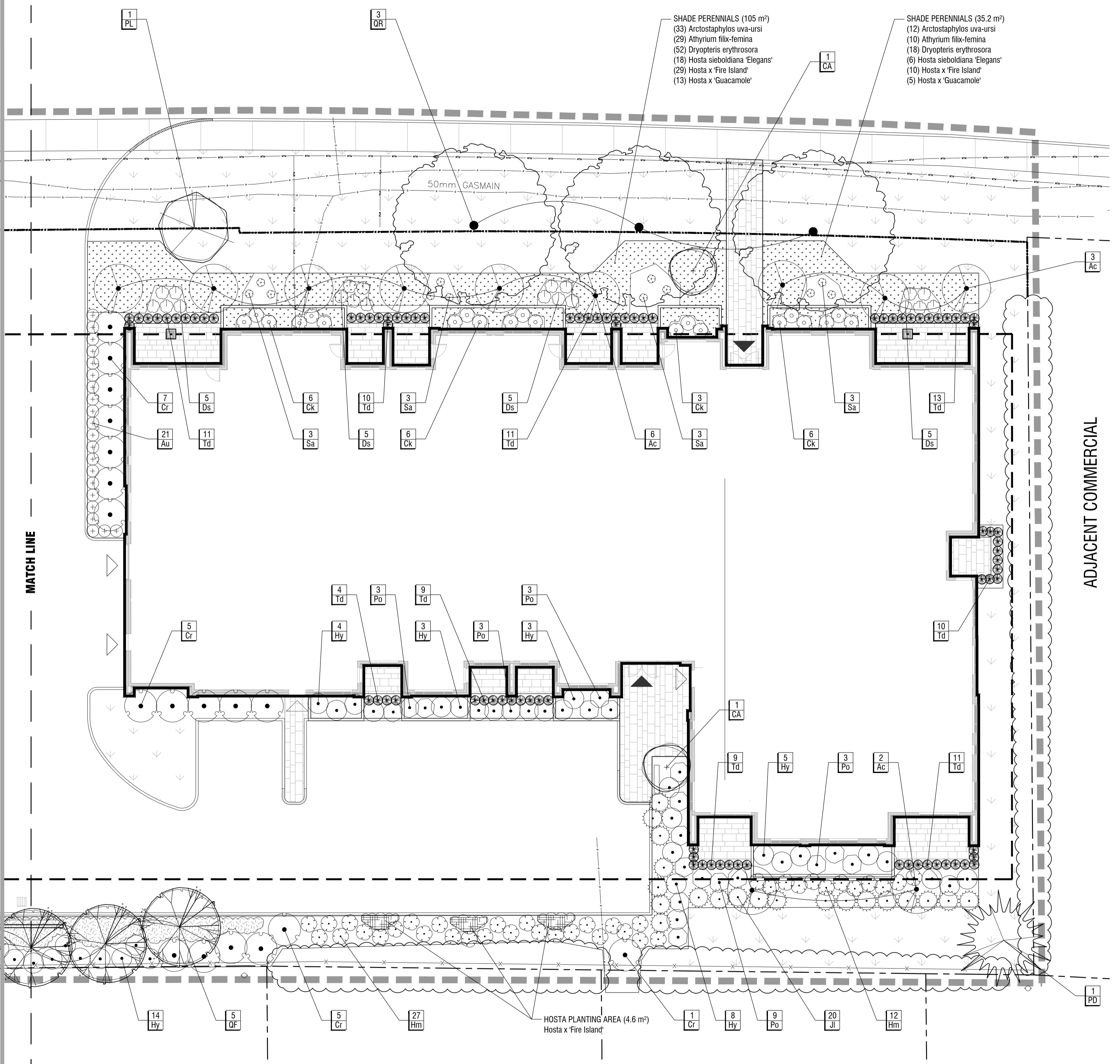
HEDGE	QTY	BOTANICAL NAME	COMMON NAME	SIZE / CONDITION / SPACING
Td	167	Taxus x media	Anglo-Japanese Yew	100cm ht. / specimen quality / Refer to plan for spacing

SHRUB AREAS

	SUN PERENNIALS	29 m ²		
	Asclepias tuberosa / Butterfly Milkweed	54	#1 Pot / 45cm sp.	0.75m oc
	Hemerocallis x 'Purple De Oro' / Purple De Oro Daylily	84	#1 Pot / 60cm sp.	0.6m oc
	Panicum virgatum / Switch Grass	14	#2 Pot / 75cm sp.	1.5m oc
	Sedum x 'Autumn Joy' / Autumn Joy Sedum	121	#1 Pot / 45cm sp.	0.5m oc
	SHADE PERENNIALS	308 m ²		
	Arctostaphylos uva-ursi / Kinnikinnick	570	#1 Pot / 75cm sp.	0.75m oc
	Athyrium filix-femina / Common Lady Fern	501	#1 Pot / 90cm sp.	0.8m oc
	Dryopteris erythrosora / Autumn Fern	890	#1 Pot / 60cm sp.	0.6m oc
	Hosta sieboldiana 'Elegans' / Elegans Hosta	321	#2 Pot / 90cm sp.	1m oc
	Hosta x 'Fire Island' / Fire Island Hosta	501	#2 Pot / 75cm sp.	0.8m oc
	Hosta x 'Guacamole' / Guacamole Hosta	223	#2 Pot / 90cm sp.	1.2m oc
	FEATURE PLANTING AREA	37 m ²		
	Hemerocallis x 'Purple De Oro' / Purple De Oro Daylily	107	#1 Pot / 60cm sp.	0.6m oc
	Hosta sieboldiana 'Elegans' / Elegans Hosta	39	#2 Pot / 90cm sp.	1m oc
	Hosta x 'Fire Island' / Fire Island Hosta	61	#2 Pot / 75cm sp.	0.8m oc
	Hosta x 'Guacamole' / Guacamole Hosta	27	#2 Pot / 90cm sp.	1.2m oc
	DAYLILY PLANTING AREA	68 m ²		
	Hemerocallis x 'Purple De Oro' / Purple De Oro Daylily		#1 Pot / 60cm sp.	
	HOSTA PLANTING AREA	12 m ²		
	Hosta x 'Fire Island' / Fire Island Hosta		#2 Pot / 75cm sp.	

NOTES:

PLANTING SCHEDULE APPLIES TO PLANTING AS SHOWN ON SHEET L2 AND L3
 LANDSCAPE ARCHITECT SHALL ATTEND TO SITE TO APPROVE LAYOUT OF PERENNIALS WITHIN THE BEDS

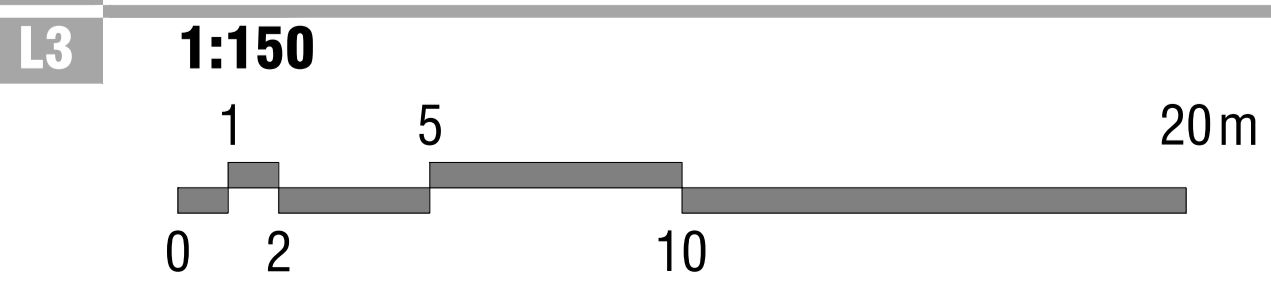


ADJACENT COMMERCIAL

MATCH LINE

PRELIMINARY
 NOT FOR CONSTRUCTION

1 PLANTING PLAN - EAST BUILDING



02	re-issue for SPA	2023/03/31
01	issue for SPA	2022/12/16
00	issue for ZBLA	2022/11/15
rev'n	description / la description	yyyy/mm/dd

FOTENN Planning + Design
 395 Cooper Street, Suite 300
 Ottawa, ON, CANADA K2P 2H7
 613.730.5709
 fotenn.com

north / le nord stamp / le cachet

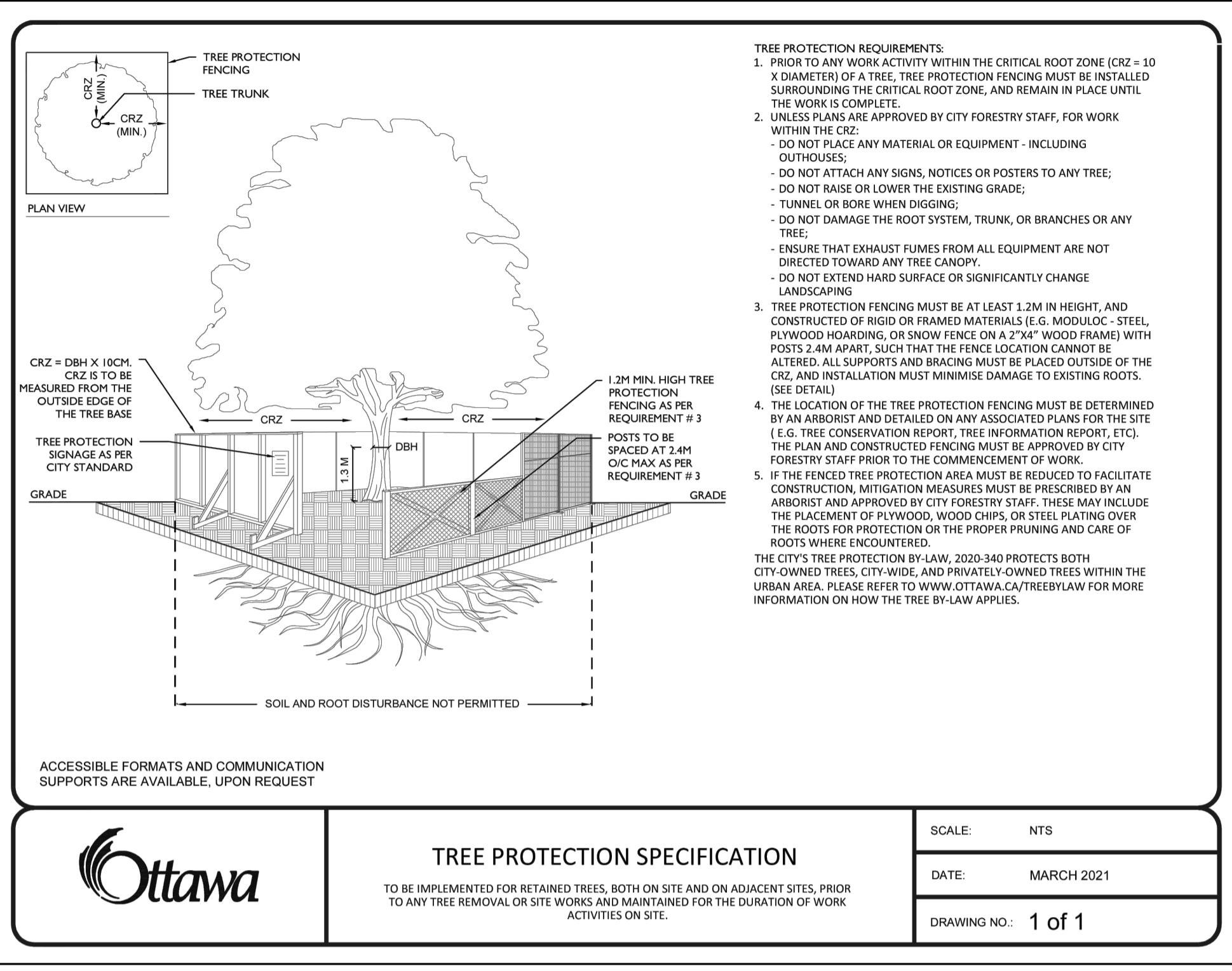
project / projet
3430 CARLING AVENUE

drawing / dessin
LANDSCAPE PLAN

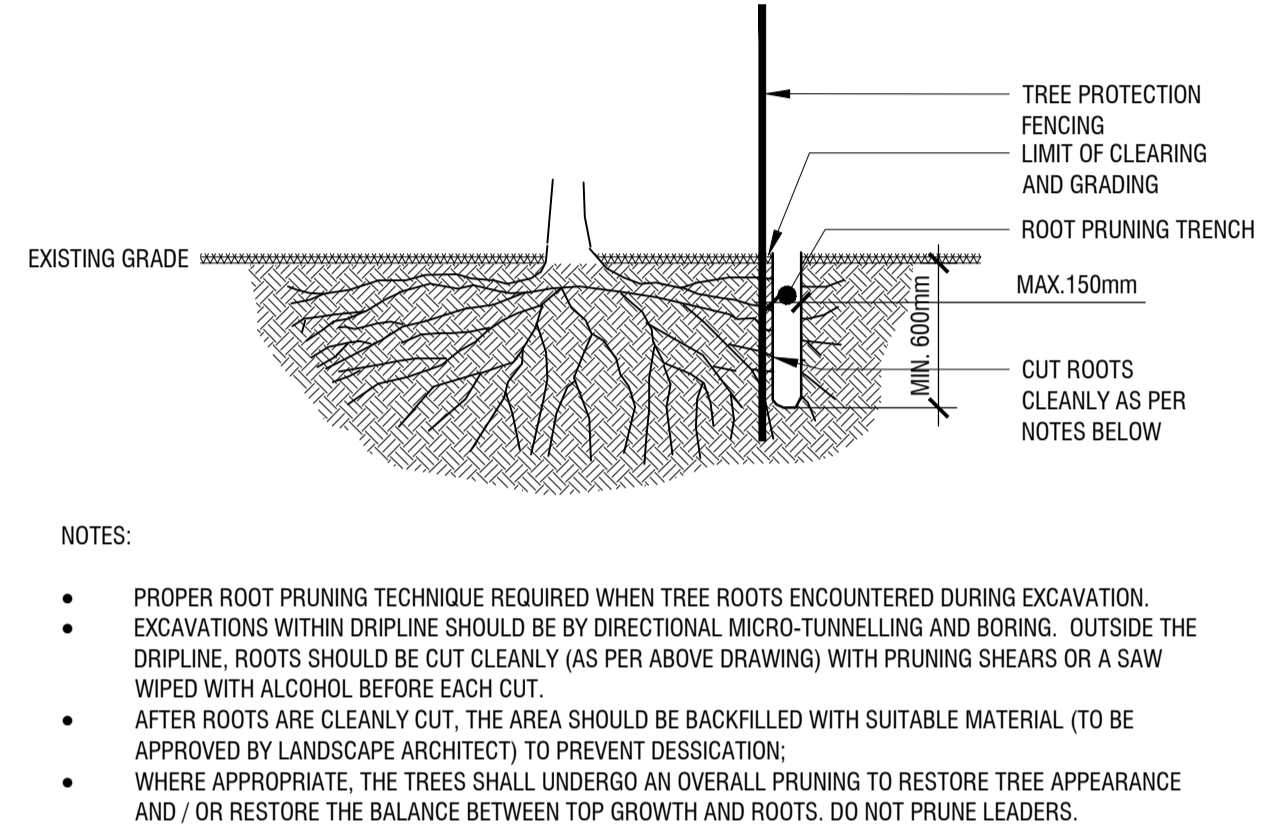
designed / conçu BM / EM	drawn / dessiné BM / EM	reviewed / examiné DF
date Nov. 2022		project number / No. du projet

drawing number / No. du dessin
L3 of 4

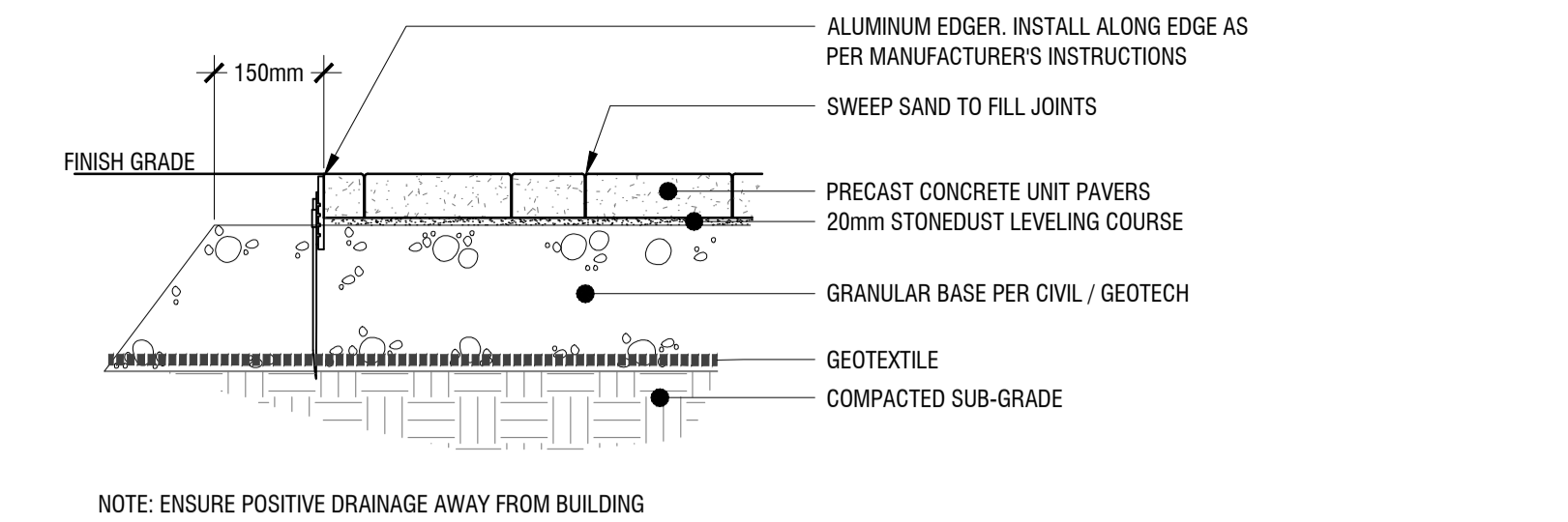
PLOT INFORMATION: DWG NAME: P:\PROJECTS\3430 CARLING AVENUE\LANDSCAPE DESIGN\DECORATIVE\LANDSCAPE\3430 CARLING_AVENUE_PLANTING.LAY PLOT DATE: 2023-04-03 13:52:39 PW SHEET SIZE: ISO full sheet A1 (594.0x 841.0) MM PLOTTED BY: Beama Mahabadi LAST SAVED BY: bmahabadi



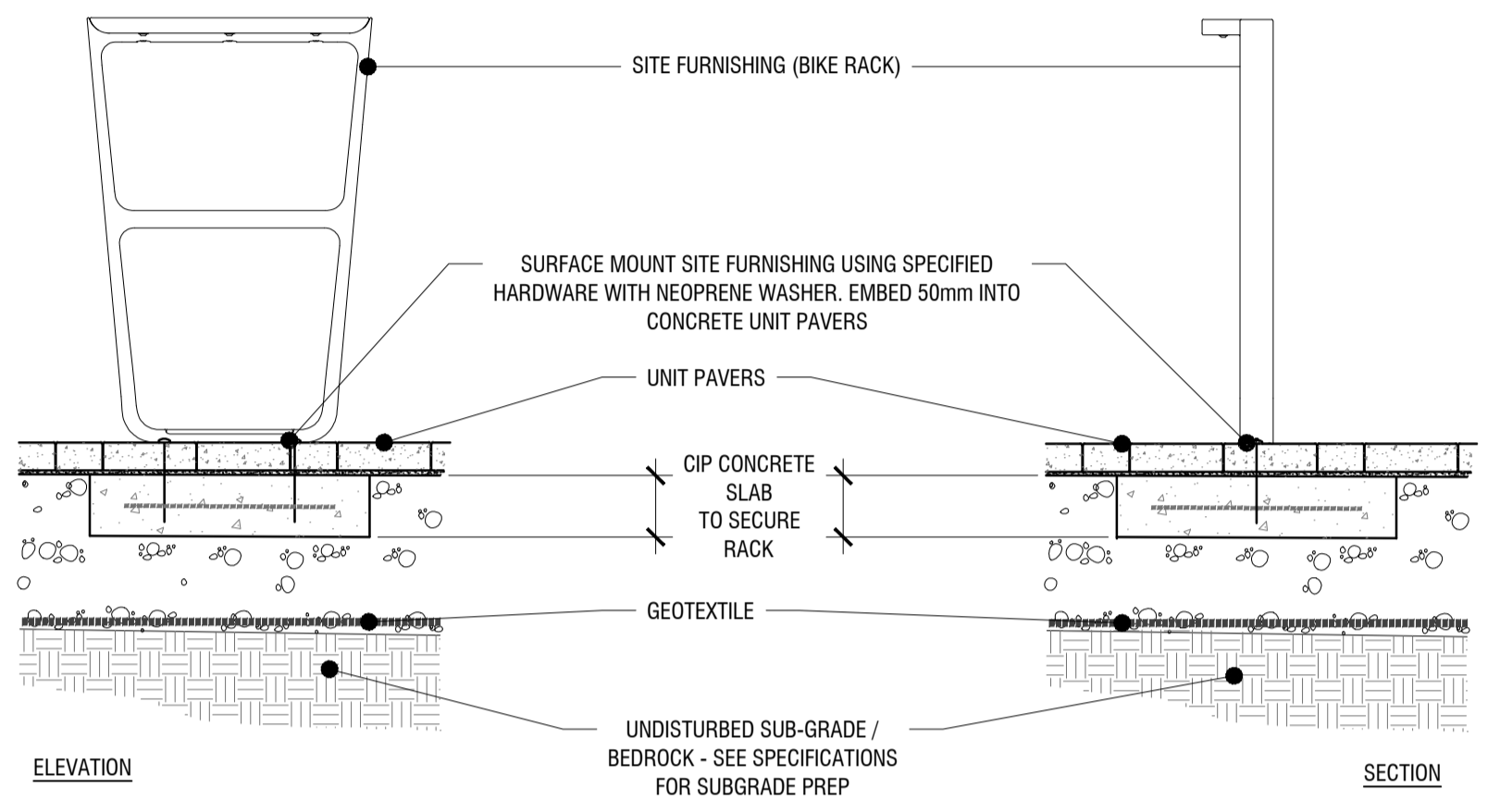
1 TREE PROTECTION FENCING
L4 n.t.s.



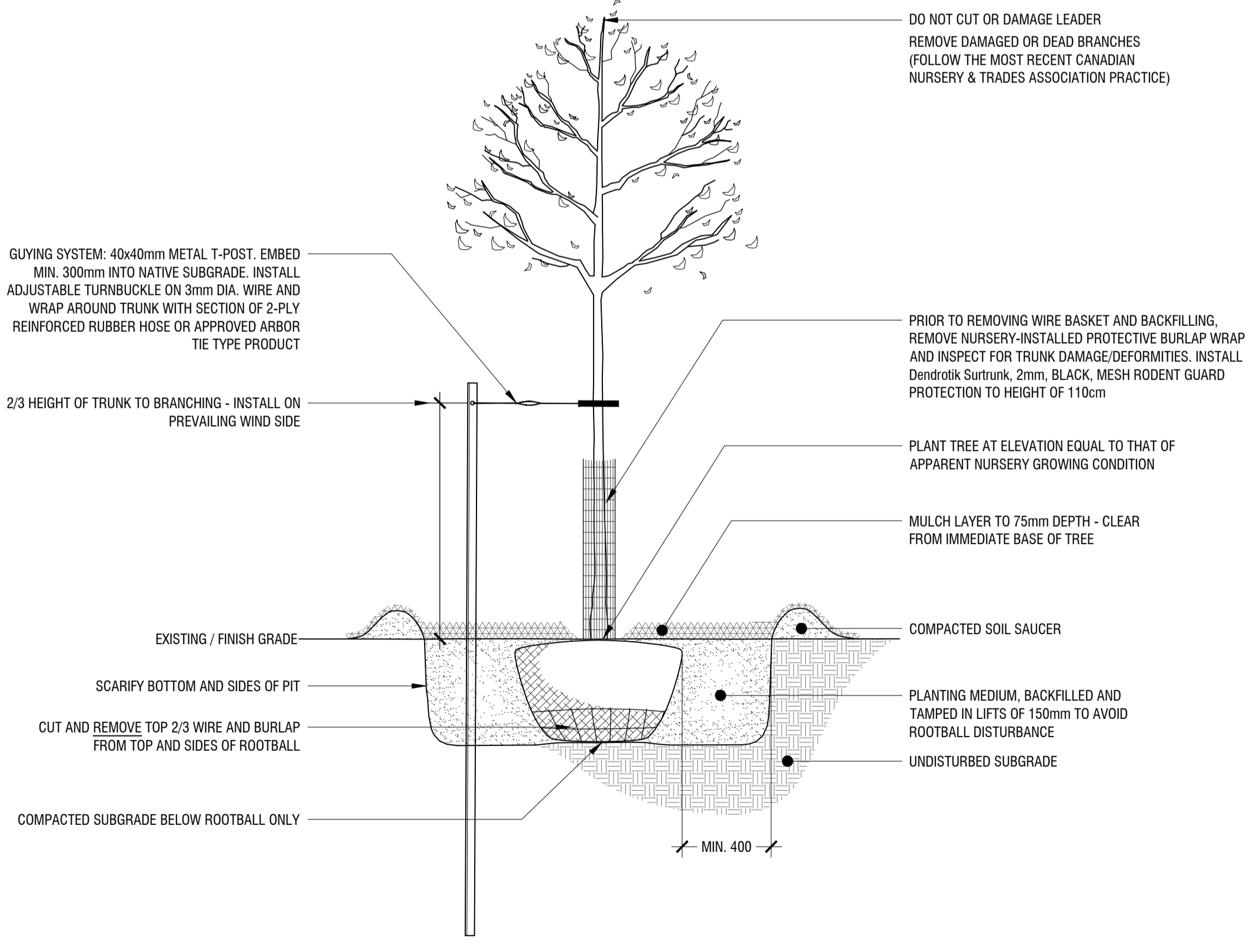
2 ROOT PRUNING DETAIL
L4 n.t.s.



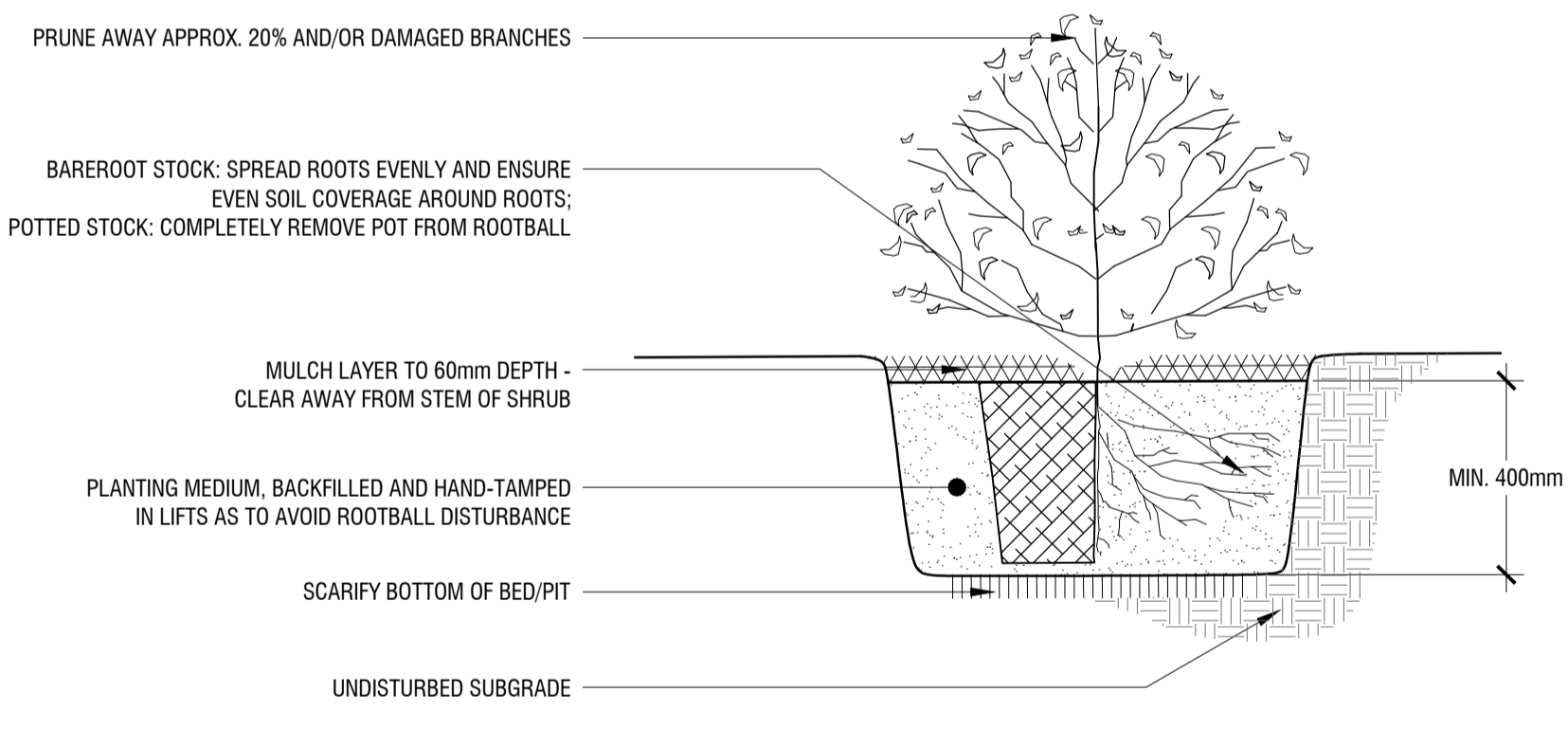
3 PRECAST UNIT PAVERS
L4 n.t.s.



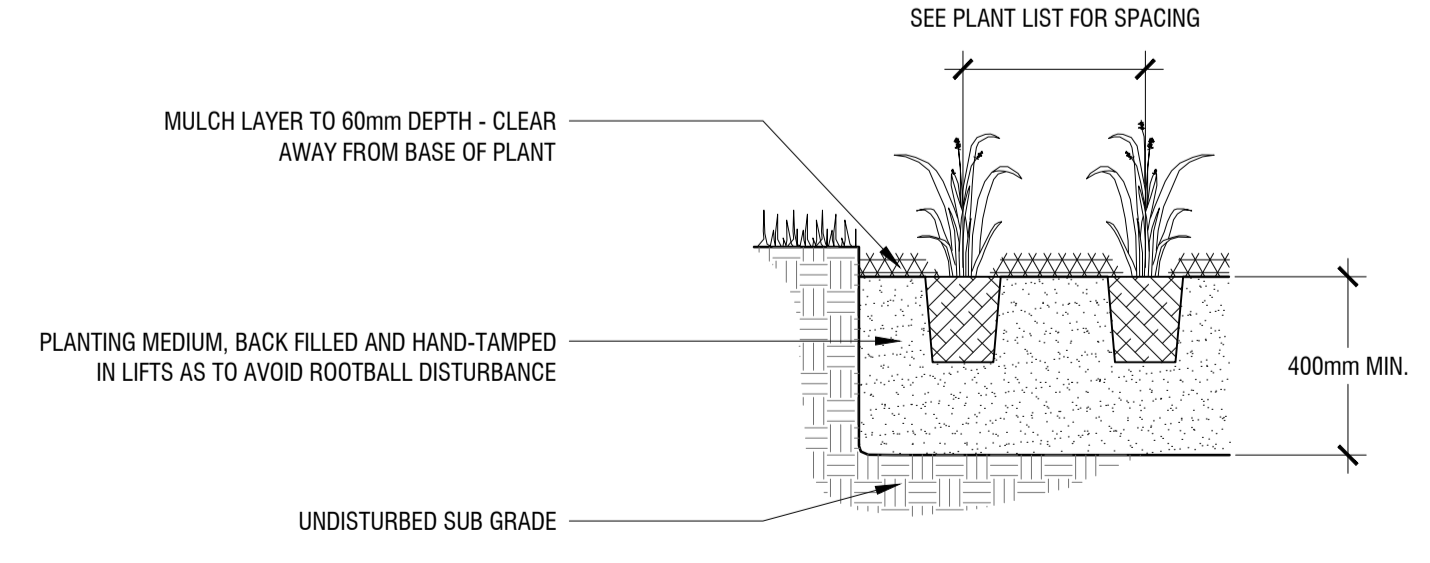
4 SURFACE MOUNTED BIKE RACK ON PAVERS W/ CIP CONC. MOUNT
L4 n.t.s.



5 DECIDUOUS TREE PLANTING
L4 n.t.s.



6 SHRUB PLANTING
L4 n.t.s.



7 PERENNIAL PLANTING
L4 n.t.s.

Copyright Reserved
The Copyrights to all designs and drawings are the property of Fotenn Consultants Inc. Unauthorised reproduction or use is forbidden. DO NOT SCALE DRAWING
Copyright réservés
Les droits d'auteur à tous les modèles et dessins sont la propriété de Fotenn Consultants Inc. Reproduction ou utilisation non autorisée est interdite. NE PAS L'ÉCHELLE DE DESSIN



Client / Client

key plan / plan repère

legend / légende

rev'n	description / la description	yyyy/mm/dd
02	re-issue for SPA	2023/03/31
01	issue for SPA	2022/12/16
00	issue for ZBLA	2022/11/15

FOTENN Planning + Design
396 Cooper Street, Suite 300
Ottawa, ON, CANADA K2P 2H7
613.730.5709
fotenn.com



project / projet

3430 CARLING AVENUE

drawing / dessin

LANDSCAPE PLAN

designed / conçu	drawn / dessiné	reviewed / examiné
BM / EM	BM / EM	DF
date	project number / No. du projet	
Nov. 2022		

drawing number / No. du dessin

L4 of 4

PLOT INFORMATION: DWG NAME: P:\PROJECTS\3430 CARLING AVENUE\LANDSCAPE\DESIGN\3430 CARLING AVENUE_LANDSCAPE.DWG
 PLOT DATE: 2023-04-03 13:53:18 PW: SHEET SIZE: ISO (A1) (841x1189) MM
 PLOTTED BY: Beama Mahabadi LAST SAVED BY: Beama Mahabadi