
are protected under the City of Ottawa’s Tree Protection By

“tree” is defined

City’s

of Ontario's Endangered Species Act (2007)

reader's attention is directed.



Andrew K. Boyd







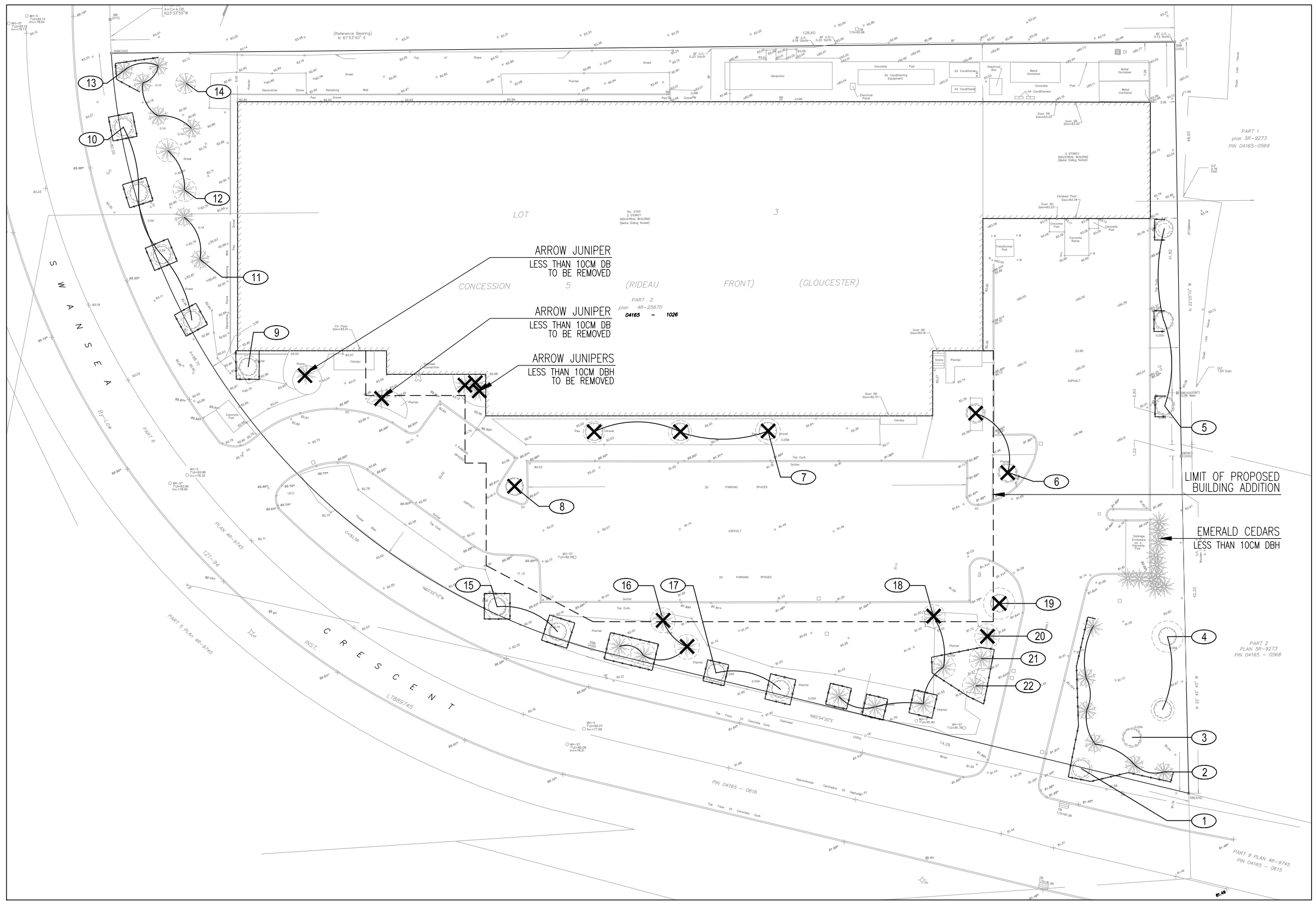




Recognition of changes to a tree's condition requires expertise and extensive experience. It is

report are assumed to be on the client's property. A recent survey prepared by a Licensed

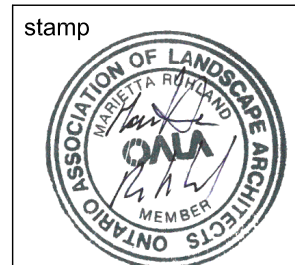
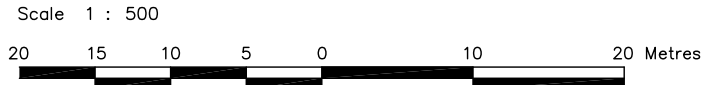




LEGEND

- TREE PROTECTION FENCE
- ☼ EXISTING CONIFEROUS TREE TO BE PRESERVED
- EXISTING DECIDUOUS TREE TO BE PRESERVED
- ✕ EXISTING CONIFEROUS TREE TO BE REMOVED
- ⊗ EXISTING DECIDUOUS TREE TO BE REMOVED
- CRZ
- ⓧ TREE ID. REFER TO IFC ASSOCIATES TREE CHART

REFER TO MAP # 1B FOR TREE PROTECTION DETAIL

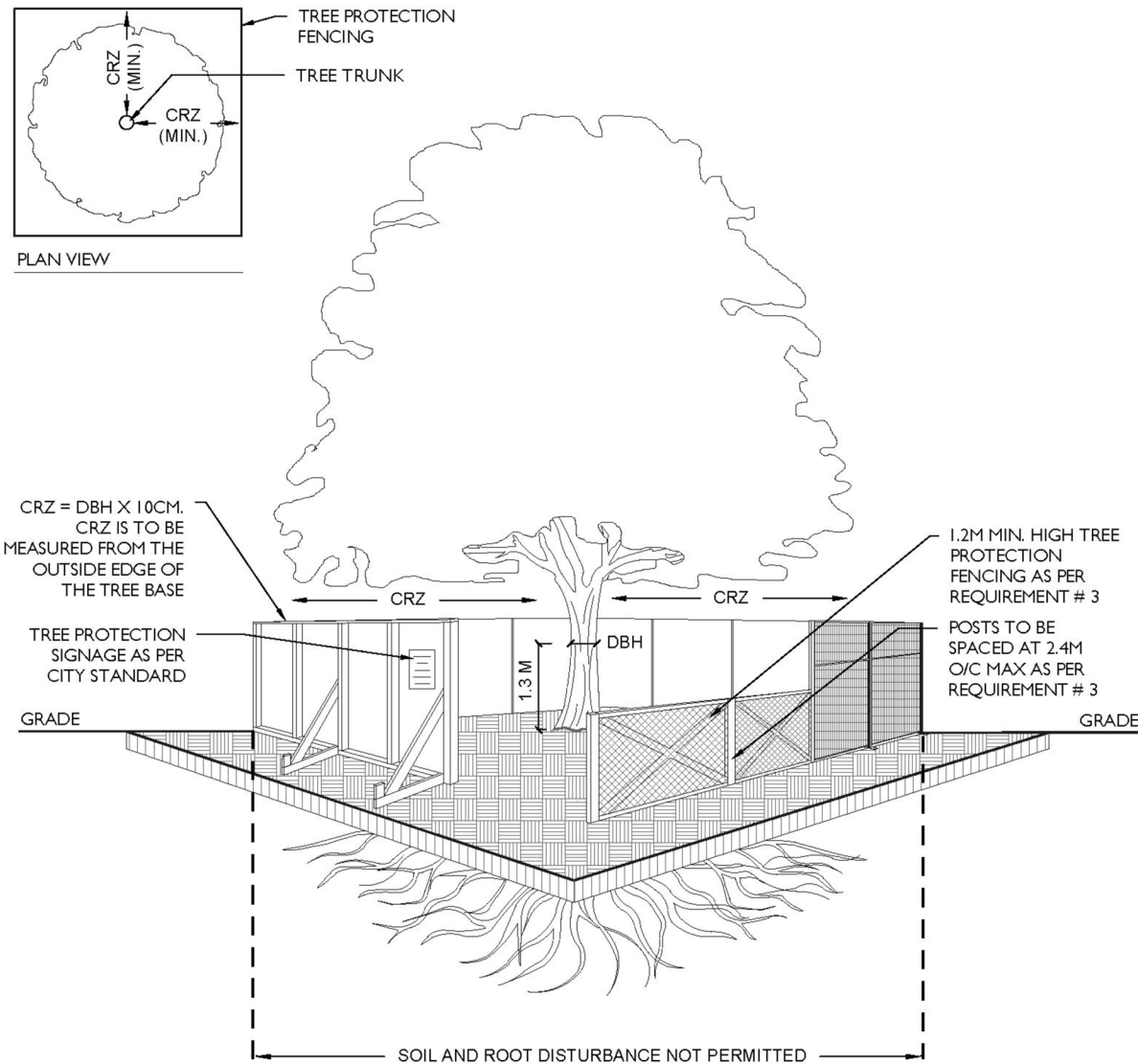


Ruhland & Associates Ltd
 landscape architecture • urban design • site planning
 Ph 613-224-4744 Fx 613-224-1131 info@rala.ca www.rala.ca

project **2700 SWANSEA CRESCENT
OTTAWA, ON**

drawing **MAP # 1A - CURRENT VEGETATION**

scale 1:500	date OCT 18, 2022	project no. 22-1677	dwg. no. MAP 1A
drawn by MR	checked by MR	revision no. 1	



- TREE PROTECTION REQUIREMENTS:**
1. PRIOR TO ANY WORK ACTIVITY WITHIN THE CRITICAL ROOT ZONE (CRZ = 10 X DIAMETER) OF A TREE, TREE PROTECTION FENCING MUST BE INSTALLED SURROUNDING THE CRITICAL ROOT ZONE, AND REMAIN IN PLACE UNTIL THE WORK IS COMPLETE.
 2. UNLESS PLANS ARE APPROVED BY CITY FORESTRY STAFF, FOR WORK WITHIN THE CRZ:
 - DO NOT PLACE ANY MATERIAL OR EQUIPMENT - INCLUDING OUTHOUSES;
 - DO NOT ATTACH ANY SIGNS, NOTICES OR POSTERS TO ANY TREE;
 - DO NOT RAISE OR LOWER THE EXISTING GRADE;
 - TUNNEL OR BORE WHEN DIGGING;
 - DO NOT DAMAGE THE ROOT SYSTEM, TRUNK, OR BRANCHES OR ANY TREE;
 - ENSURE THAT EXHAUST FUMES FROM ALL EQUIPMENT ARE NOT DIRECTED TOWARD ANY TREE CANOPY.
 - DO NOT EXTEND HARD SURFACE OR SIGNIFICANTLY CHANGE LANDSCAPING
 3. TREE PROTECTION FENCING MUST BE AT LEAST 1.2M IN HEIGHT, AND CONSTRUCTED OF RIGID OR FRAMED MATERIALS (E.G. MODULOC - STEEL, PLYWOOD HOARDING, OR SNOW FENCE ON A 2"X4" WOOD FRAME) WITH POSTS 2.4M APART, SUCH THAT THE FENCE LOCATION CANNOT BE ALTERED. ALL SUPPORTS AND BRACING MUST BE PLACED OUTSIDE OF THE CRZ, AND INSTALLATION MUST MINIMISE DAMAGE TO EXISTING ROOTS. (SEE DETAIL)
 4. THE LOCATION OF THE TREE PROTECTION FENCING MUST BE DETERMINED BY AN ARBORIST AND DETAILED ON ANY ASSOCIATED PLANS FOR THE SITE (E.G. TREE CONSERVATION REPORT, TREE DISCLOSURE REPORT, ETC). THE PLAN AND CONSTRUCTED FENCING MUST BE APPROVED BY CITY FORESTRY STAFF PRIOR TO THE COMMENCEMENT OF WORK.
 5. IF THE FENCED TREE PROTECTION AREA MUST BE REDUCED TO FACILITATE CONSTRUCTION, MITIGATION MEASURES MUST BE PRESCRIBED BY AN ARBORIST AND APPROVED BY CITY FORESTRY STAFF. THESE MAY INCLUDE THE PLACEMENT OF PLYWOOD, WOOD CHIPS, OR STEEL PLATING OVER THE ROOTS FOR PROTECTION OR THE PROPER PRUNING AND CARE OF ROOTS WHERE ENCOUNTERED.

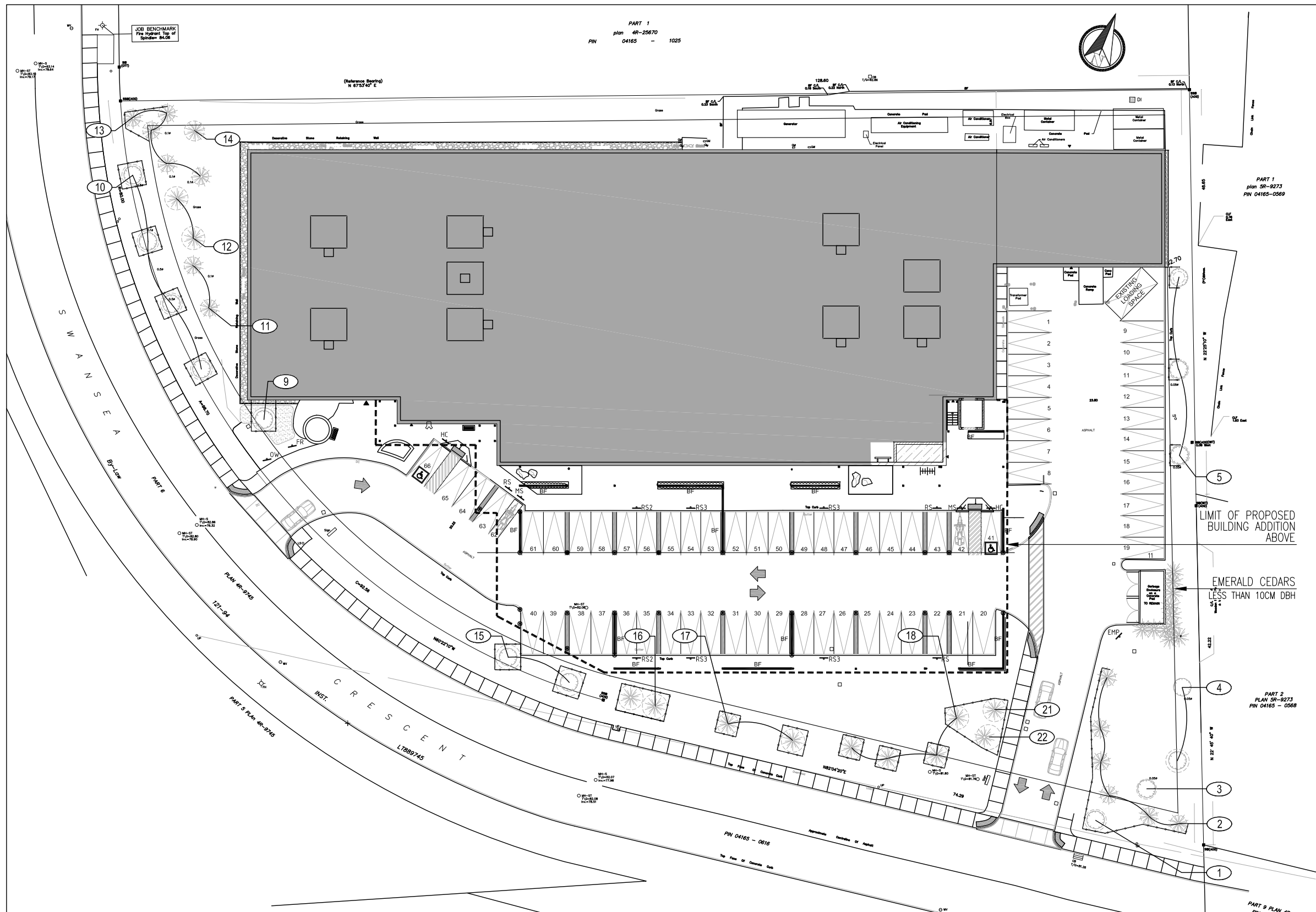
BY-LAWS
 ALL CITY-OWNED TREES ARE PROTECTED UNDER THE MUNICIPAL TREES AND NATURAL AREAS PROTECTION BY-LAW (2006-279). WITHIN THE URBAN AREA, PRIVATELY-OWNED TREES GREATER THAN 50CM DIAMETER ON LOTS 1HA IN SIZE OR LESS, AND TREES GREATER THAN 10CM DIAMETER ON LOTS >1HA, ARE PROTECTED UNDER THE URBAN TREE CONSERVATION BY-LAW (2009-200).

ACCESSIBLE FORMATS AND COMMUNICATION SUPPORTS ARE AVAILABLE, UPON REQUEST

	TREE PROTECTION SPECIFICATION TO BE IMPLEMENTED FOR RETAINED TREES, BOTH ON SITE AND ON ADJACENT SITES, PRIOR TO ANY TREE REMOVAL OR SITE WORKS AND MAINTAINED FOR THE DURATION OF WORK ACTIVITIES ON SITE.	SCALE: NTS
		DATE: MAY 2019
		DRAWING NO.: 1 of 1

TREE PROTECTION DETAIL

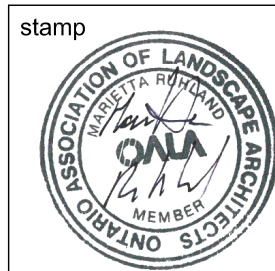
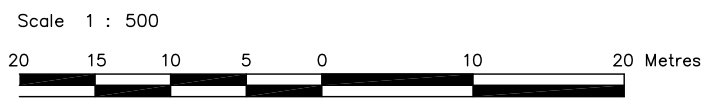
stamp 	 landscape architecture • urban design • site planning Ph 613-224-4744 Fx 613-224-1131 info@rala.ca www.rala.ca	project 2700 SWANSEA CRESCENT OTTAWA, ON	drawing MAP # 1B - CITY DETAIL			
			scale NTS	date OCT 18, 2022	project no. 22-1677	dwg. no. MAP 1B
			drawn by MR	checked by MR	revision no. 1	



LEGEND

- TREE PROTECTION FENCE
- ✳ EXISTING CONIFEROUS TREE TO BE PRESERVED
- EXISTING DECIDUOUS TREE TO BE PRESERVED
- CRZ
- ⊗ TREE ID. REFER TO IFC ASSOCIATES TREE CHART

REFER TO MAP # 1B FOR TREE PROTECTION DETAIL



Ruhland & Associates Ltd
 landscape architecture • urban design • site planning
 Ph 613-224-4744 Fx 613-224-1131 info@rala.ca www.rala.ca

project **2700 SWANSEA CRESCENT
 OTTAWA, ON**

drawing **MAP # 2 - PROPOSED DEVELOPMENT**

scale 1:500	date OCT 18, 2022	project no. 22-1677	dwg. no. MAP #2
drawn by MR	checked by MR	revision no. 1	