

NOTE

THIS PLAN IS ISSUED FOR SITE PLAN CONTROL SUBMISSION ONLY.

ADDITIONAL DETAILING AND SPECIFICATIONS ARE REQUIRED PRIOR TO TENDERING OR CONSTRUCTION

ALL PROPOSED TREES MEET THE CITY GUIDELINES FOR SOIL VOLUME REQUIREMENTS.

THIS DRAWING IS TO BE READ IN CONJUNCTION WITH TREE CONSERVATION REPORT. REFER TO TREE CONSERVATION REPORT. REFER TO TREE CONSERVATION REPORT PREPARED BY IFS, DATED July 11, 2022 FOR TREE PROTECTION MEASURES AND DETAILS.

SERVICING INFORMATION SHOWN AS REFERENCE ONLY. REFER TO CIVIL DRAWINGS.

GENERAL NOTES

- ALL GENERAL SITE INFORMATION AND CONDITIONS COMPILED FROM EXISTING PLANS, SURVEYS AND CONSULTANT'S FIELD NOTES. REPORT ALL DISCREPANCIES PRIOR TO ANY WORK. NO RESPONSIBILITY IS BORN BY THE CONSULTANT FOR UNKNOWN SUBSURFACE CONDITIONS.
- THE LOCATION OF THE UTILITIES IS APPROXIMATE ONLY, AND THE EXACT LOCATION SHOULD BE DETERMINED BY CONSULTING THE MUNICIPAL AUTHORITIES AND UTILITY COMPANIES CONCERNED. THE CONTRACTOR SHALL PROVE THE LOCATION OF UTILITIES AND SHALL BE RESPONSIBLE FOR ADEQUATE PROTECTION FROM DAMAGE.
- NO TREE, DESIGNATED ON THIS PLAN AS TO STAY, SHALL BE REMOVED, WHERE CONDITIONS IN THE FIELD AFFECT THE SAFETY OR RETENTION OF THE DESIGNATED TREE. THE LANDSCAPE ARCHITECT AND PLANNING STAFF (OR OWNER) ARE TO BE NOTIFIED.
- PRUNING OF EXISTING TREES SHALL BE DONE ONLY TO REPAIR EXISTING DAMAGE, AS SHOWN ON PLAN OR AS DIRECTED BY THE CITY (OR LANDSCAPE ARCHITECT). PRUNING TO BE DONE ONLY BY A QUALIFIED ARBORIST.
- REVIEW PROJECT WITH CONSULTANT PRIOR TO COMMENCING ANY ON SITE WORK.
- ALL DIMENSIONS SHOWN ARE TO BE VERIFIED ON SITE PRIOR TO ANY CONSTRUCTION. NO DEVIATIONS ARE TO BE MADE FROM THE LAYOUTS AS SHOWN ON THIS PLAN WITHOUT PRIOR CONSULTATION WITH THE LANDSCAPE ARCHITECT AND PLANNING STAFF (OR OWNER).
- OBTAIN APPROVAL OF LANDSCAPE ARCHITECT FOR GRANULAR BASE AND LAYOUT OF ALL PAVEMENT AREAS PRIOR TO CONSTRUCTION.
- ALL SODDED AREAS TO RECEIVE A MINIMUM OF 150MM OF TOPSOIL OVER GRADED SUB-BASE. DO NOT USE MESH. SOD SHALL COME FROM AN APPROVED SOURCE AND SHALL BE LAID WITHIN 24 HOURS OF BEING CUT IN THE NURSERY. ONLY NURSERY SOD SHALL BE USED.
- STAKE PLANTING LOCATIONS AND RECEIVE APPROVAL OF LANDSCAPE ARCHITECT, PRIOR TO EXCAVATION OF ANY PLANTING PITS. NO SUBSTITUTIONS OF PLANT MATERIAL SHALL BE MADE WITHOUT PRIOR APPROVAL(S) OF THE LANDSCAPE ARCHITECT (AND PLANNING STAFF).
- WHERE CLAY IS ENCOUNTERED PROPER DRAINAGE MUST BE ENSURED IN TREE/SHRUB PITS, PRIOR TO PLANTING. HAVE METHOD APPROVED BY LANDSCAPE ARCHITECT.
- NO SUBSTITUTIONS OF PLANT MATERIAL SHALL BE MADE WITHOUT PRIOR APPROVALS OF THE LANDSCAPE ARCHITECT AND PLANNING STAFF.
- FINAL SUBGRADE IS TO APPROVED BY THE LANDSCAPE ARCHITECT PRIOR TO IMPORTING TOPSOIL AND SOD BEING LAID.
- MAINTAIN POSITIVE SURFACE RUNOFF THROUGH THE ENTIRE CONSTRUCTION PERIOD.
- REINSTATE ALL AREAS AND ITEMS DAMAGED AS A RESULT OF CONSTRUCTION ACTIVITIES.



6				
5				
4				
3				
2	Re-Issued per Comments	22/11/18	MR	
1	Issued for Site plan Control	22/10/26	MR	
NUMBER	MILESTONE / FAT SAILANT	DATE: (Y/M/D)	INITIALS	INITIALES
DESIGNED BY / CONSULTANT	M RUHLAND		CHECKED BY / NURSERY PAR M RUHLAND	
DRAWN BY / DESIGNER	H P			
SCALE / ECHELLE				

PLANT LIST (MASTER)

DECIDUOUS TREES

KEY	QTY.	BOTANICAL NAME	COMMON NAME	CAL. (mm)	HT. (cm)	SPREAD (cm)	ROOTS (cm)	REMARKS
GTS	4	<i>Cedrela trichanthos</i> 'Shademaster'	Shademaster Honeylocust	60	-	-	WB	-
MIS	6	<i>Malus 'Jetset'</i>	Purple Spire Columnar Crabapple	45	-	-	WB	-

CONIFEROUS TREES

KEY	QTY.	BOTANICAL NAME	COMMON NAME	CAL. (mm)	HT. (cm)	SPREAD (cm)	ROOTS (cm)	REMARKS
PP	2	<i>Picea pungens</i>	Colorado Spruce	-	250	-	WB	-
TOH	3	<i>Thuja occidentalis</i> 'Holmsstrup'	Holmsstrup's Spire Cedar	-	150	-	CG / FP	-

DECIDUOUS SHRUBS

KEY	QTY.	BOTANICAL NAME	COMMON NAME	CAL. (mm)	HT. (cm)	SPREAD (cm)	ROOTS (cm)	REMARKS
Pfg	38	<i>Potentilla fruticosa</i> 'Goldfinger'	Goldfinger potentilla	-	50	30	3 gal. pot.	-
Ra	26	<i>Rhus aromatica</i>	Fragrant Sumac	-	50	50	3 gal. pot.	-
Rr	37	<i>Rosa rugosa</i>	Rugosa Rose	-	-	-	3 gal. pot.	-
Sba	45	<i>Spiraea x humalda</i> 'Anthony Waters'	Anthony Waters Spiraea	-	50	30	3 gal. pot.	-
Sbg	38	<i>Spiraea x humalda</i> 'Goldflame'	Goldflame Spiraea	-	50	30	3 gal. pot.	-
Sjs	30	<i>Spiraea japonica</i> 'Shirobana'	Shirobana Spiraea	-	50	30	3 gal. pot.	-

PERENNIALS & GROUNDCOVERS

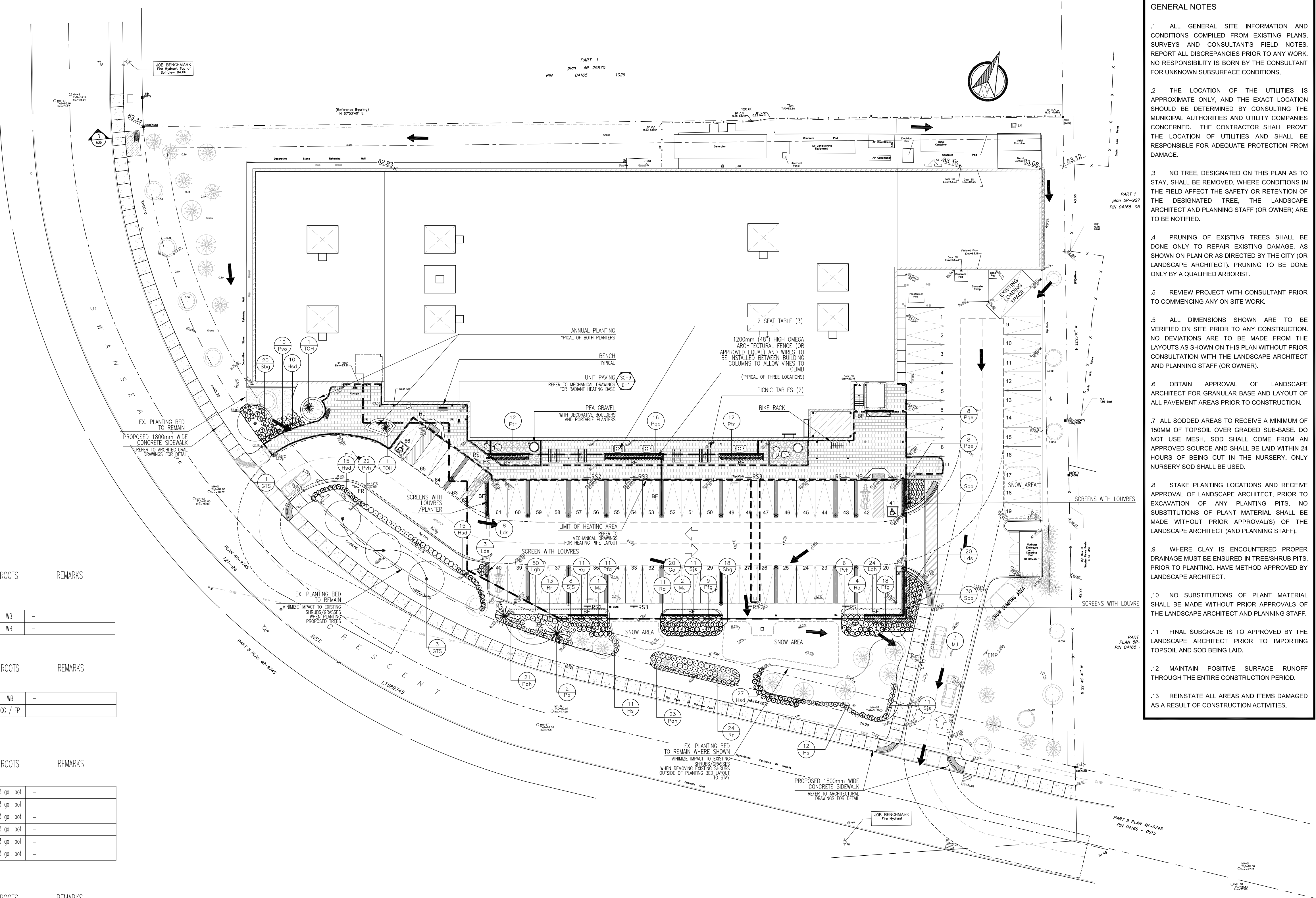
KEY	QTY.	BOTANICAL NAME	COMMON NAME	CAL. (mm)	HT. (cm)	SPREAD (cm)	ROOTS (cm)	REMARKS
Go	20	<i>Galium odoratum</i>	Sweet Woodruff	-	-	-	15cm pot.	-
Hsd	67	<i>Hemerocallis 'Stella D'Ora'</i>	Stella D'Ora Daylily	-	-	-	1 gal. pot.	-
Lgh	74	<i>Lamiumstrum galabardum</i> 'Herman's Pride'	Herman's Pride False Lamium	-	-	-	15cm pot.	-

HERBACEOUS & WOODY VINES

KEY	QTY.	BOTANICAL NAME	COMMON NAME	CAL. (mm)	HT. (cm)	SPREAD (cm)	ROOTS (cm)	REMARKS
Lds	31	<i>Lonicera x brownii</i> 'Drapmore Scarlet'	Drapmore Honeysuckle	-	-	-	1 gal. pot.	-
Pae	32	<i>Parthenocissus quinquefolia</i> 'Engelmann'	Engelmann's Ivy	-	-	-	1 gal. pot.	-
Pbr	24	<i>Parthenocissus tricuspidata</i>	Boston Ivy	-	-	-	1 gal. pot.	-

GRASSES

KEY	QTY.	BOTANICAL NAME	COMMON NAME	CAL. (mm)	HT. (cm)	SPREAD (cm)	ROOTS (cm)	REMARKS
Pvh	28	<i>Panicum virgatum</i> 'Heavy Metal'	Heavy Metal Switch Grass	-	-	-	1 gal. pot.	-
Hs	23	<i>Helicictichon sempervivens</i>	Blue Oat Grass	-	-	-	1 gal. pot.	-
Pvo	10	<i>Panicum virgatum</i> 'Rotstrahlbusch'	Rotstrahlbusch Switch Grass	-	-	-	1 gal. pot.	-
Poh	44	<i>Pennisetum alopecuroides</i> 'Fountain'	Fountain Grass	-	-	-	1 gal. pot.	-



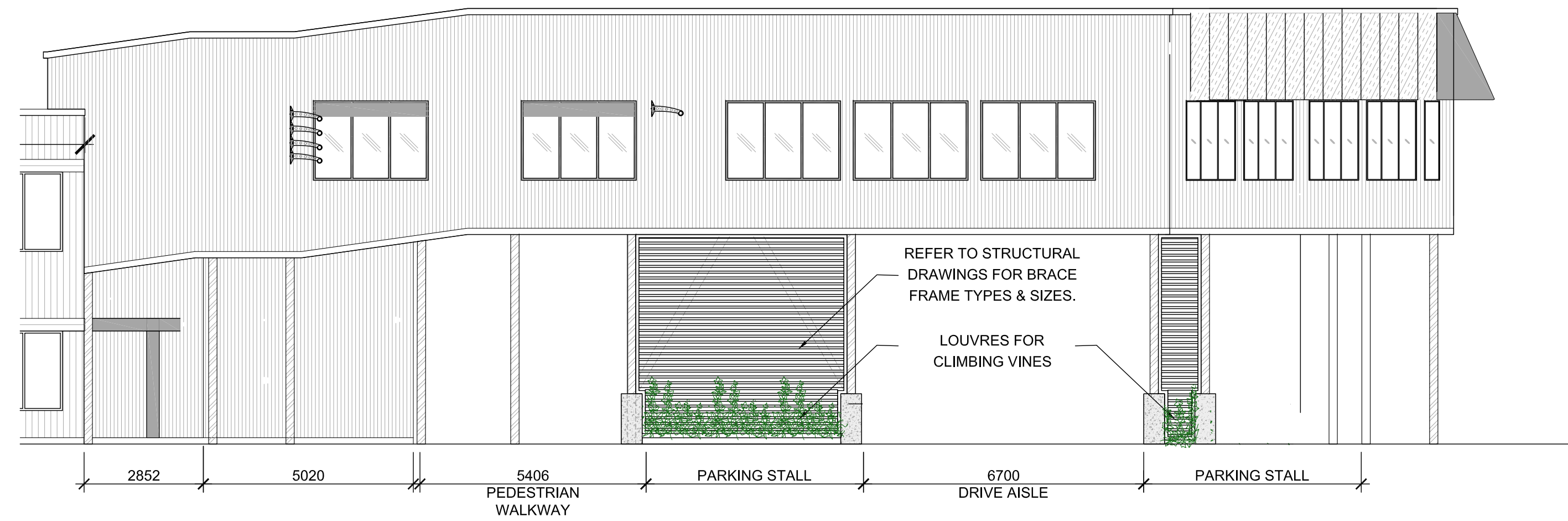
PROJECT / LOCATION
 IRIDIAN SPECTRAL TECHNOLOGIES EXPANSION
 2700 SWANSEA CRESCENT OTTAWA, ON

DRAWING
 LANDSCAPE PLAN

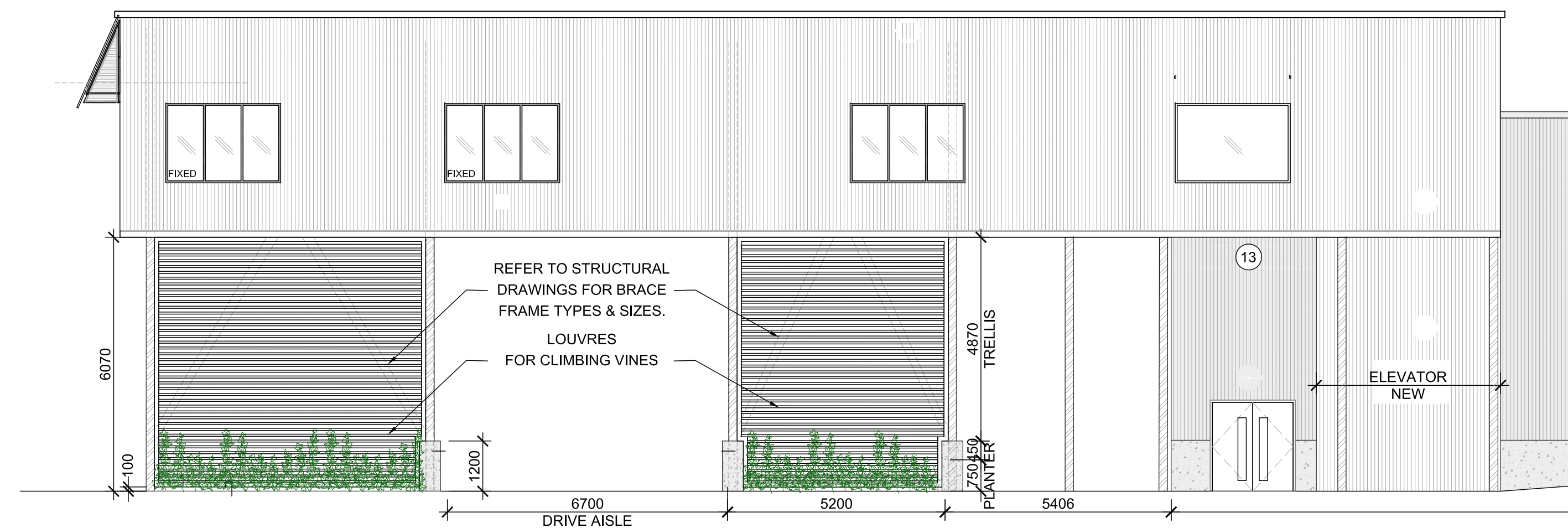
DATE
 JULY 2022

SHEET NO.
 L-1

PROJECT NO.
 22-1677



1 LOUVRES FOR CLIMBING VINES - WEST ELEVATION
D2 SCALE: 1:100



2 LOUVRES FOR CLIMBING VINES - EAST ELEVATION
D2 SCALE: 1:100



6			
5			
4			
3			
2			
1	Issued for Site plan Control	22-11-21	HP

DESIGNED BY / CONCEIVED PAR M RUHLAND	CHECKED BY / VERIFIE PAR M RUHLAND
DRAWN BY / DESINE PAR H P	

SCALE / ECHELLE

ARCHITECT	CONSULTANT
-----------	------------

CONSULTANT	CONSULTANT
------------	------------

PROJECT / LOCATION
IRIDIAN SPECTRAL
TECHNOLOGIES
EXPANSION
2700 SWANSEA CRESCENT
OTTAWA, ON

DRAWING
LANDSCAPE DETAILS

DATE JULY 2022	SHEET NO. D-2
PROJECT NO. 22-1677	