

TOPOGRAPHIC PLAN OF SURVEY OF

**BLOCK 3**  
**REGISTERED PLAN 4M-1634**  
**CITY OF OTTAWA**

Surveyed by Annis, O'Sullivan, Vollebek Ltd.

Scale 1 : 400



**Metric**  
 DISTANCES SHOWN ON THIS PLAN ARE IN METRES AND CAN BE CONVERTED TO FEET BY DIVIDING BY 0.3048.

**Surveyor's Certificate**

I CERTIFY THAT :

1. This survey and plan are correct and in accordance with the Surveys Act and the Surveyors Act and the regulations made under them.
2. The survey was completed on the 21st day of July, 2022.

July 28/22  
 Date

V. Andrew Shelp  
 Ontario Land Surveyor

**Notes & Legend**

Denotes	
□	Survey Monument Planted
■	Survey Monument Found
SSIB	Short Standard Iron Bar
Meas.	Measured
(AOG)	Annis, O'Sullivan, Vollebek Ltd.
(PI)	Registered Plan 4M-1634
○ MH-ST	Maintenance Hole (Storm Sewer)
○ MH-S	Maintenance Hole (Sanitary)
○ MH-H	Maintenance Hole (Hydro)
— W —	Underground Water
— G —	Underground Gas
○ LS	Light Standard
□ CBI	Catch Basin Inlet
○ FH	Fire Hydrant
⊕ VC	Valve Chamber (Watermain)
⊕ GV	Gas Valve
C/L	Centreline
CLF	Chain Link Fence
PWF	Post and Wire Fence
T/G	Top of Grate
+ 65.00	Location of Elevations
+ 65.00	Top of Concrete Curb Elevation
—	Property Line

Bearings are grid, referred to the northerly limit of Block 3 having a bearing of N58°57'15"E on Registered Plan 4M-1634 and derived from Can-Net 2016 Real Time Network GPS observations, MTM Zone 9 ( 76°30' West Longitude ) NAD-83 (original).

**ELEVATION NOTES**

1. Elevations shown are geodetic and are referred to the CGVD28 geodetic datum.
2. It is the responsibility of the user of this information to verify that the job benchmark has not been altered or disturbed and that it's relative elevation and description agrees with the information shown on this drawing.

**UTILITY NOTES**

1. This drawing cannot be accepted as acknowledging all of the utilities and it will be the responsibility of the user to contact the respective utility authorities for confirmation.
2. Only visible surface utilities were located.
3. A field location of underground plant by the pertinent utility authority is mandatory before any work involving breaking ground, probing, excavating etc.

ASSOCIATION OF ONTARIO  
 LAND SURVEYORS  
 PLAN SUBMISSION FORM

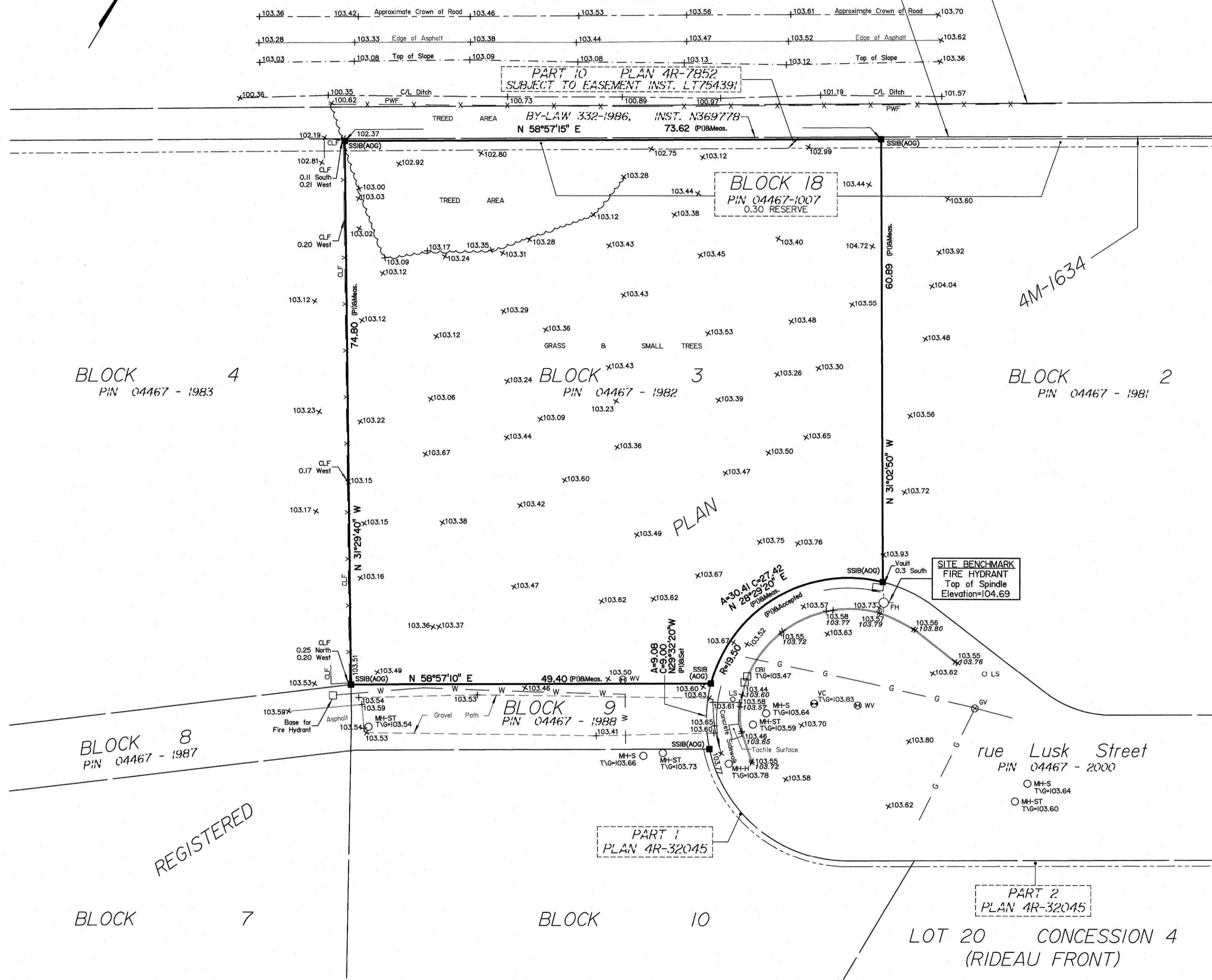
V-31706



THIS PLAN IS NOT VALID UNLESS  
 IT IS AN EMBOSSED ORIGINAL  
 COPY ISSUED BY THE SURVEYOR  
 In accordance with  
 Regulation 1026, Section 29 (3).

© Annis, O'Sullivan, Vollebek Ltd., 2022. "THIS PLAN IS PROTECTED BY COPYRIGHT"  
**ANNIS, O'SULLIVAN, VOLLEBEK LTD.**  
 14 Concourse Gate, Suite 500  
 Nepean, Ont. K2E 7S6  
 Phone: (613) 727-0850 / Fax: (613) 727-1079  
 Email: [Nepean@annisl.com](mailto:Nepean@annisl.com)  
 Ontario Land Surveyors (Lic. No. 23071-22, THC BK3 RP4M-1634 POS F) 06

**O'KEEFE COURT**  
**ROAD ALLOWANCE BETWEEN LOTS 20 & 21 ( As Widened )**  
**PART 15 PLAN 4R-8856**  
 PIN 04631 - 0388



BLOCK 4  
 PIN 04467 - 1983

BLOCK 3  
 PIN 04467 - 1982

BLOCK 2  
 PIN 04467 - 1981

BLOCK 8  
 PIN 04467 - 1987

BLOCK 9  
 PIN 04467 - 1988

BLOCK 7

BLOCK 10

LOT 20 CONCESSION 4  
 (RIDEAU FRONT)

REGISTERED

PART 1  
 PLAN 4R-32045

PART 2  
 PLAN 4R-32045

Y:\0222\03071-22 from holding\_lusk.cres BV\FINAL\03071-22 THC BK3 RP4M-1634 POS F.dwg