

G. Wildman

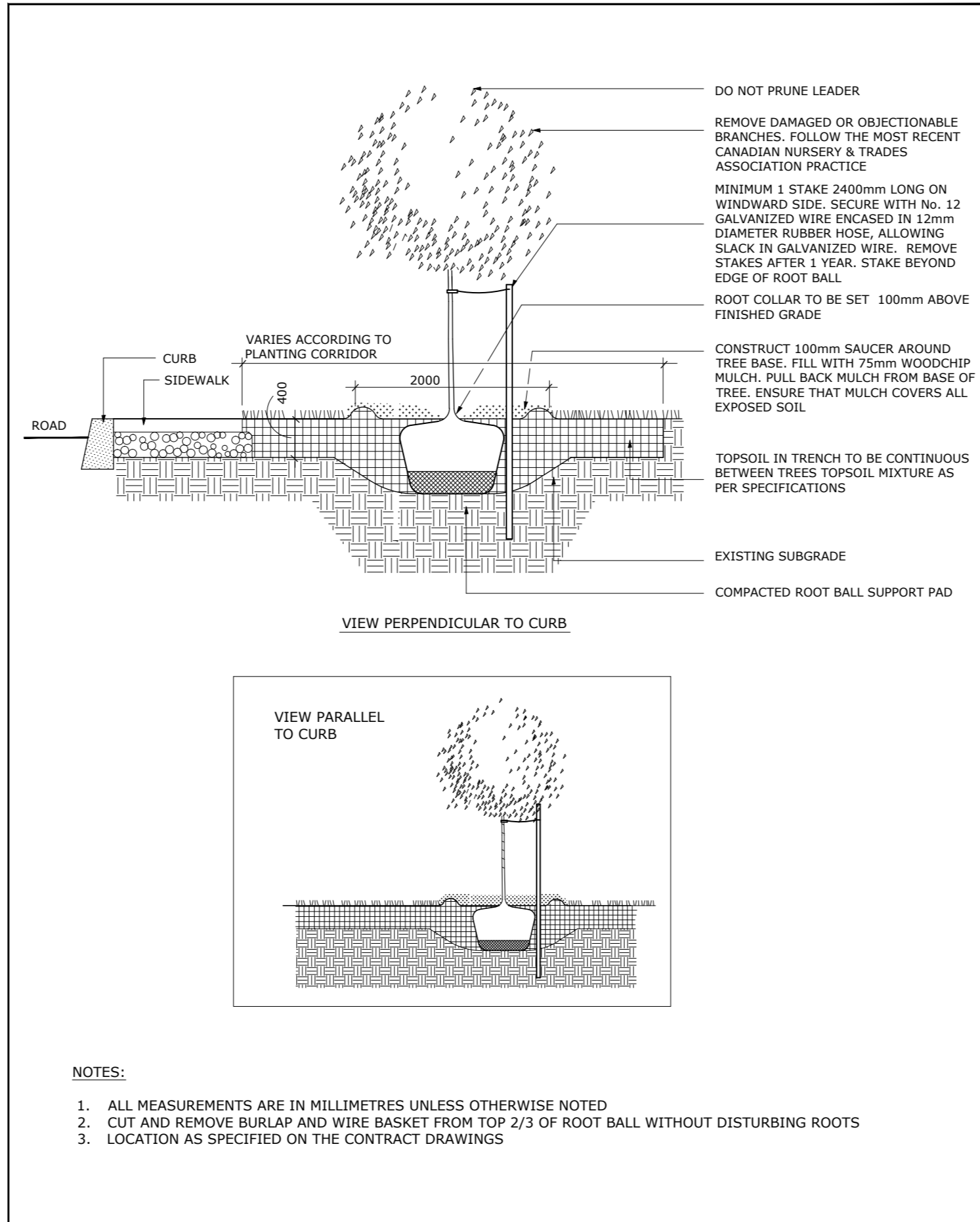
GERALDINE WILDMAN
ACTING MANAGER, DEVELOPMENT REVIEW, EAST PLANNING, REAL ESTATE & ECONOMIC DEVELOPMENT DEPARTMENT, CITY OF OTTAWA

APPROVED
 By Geraldine Wildman at 7:03 pm, Nov 07, 2023

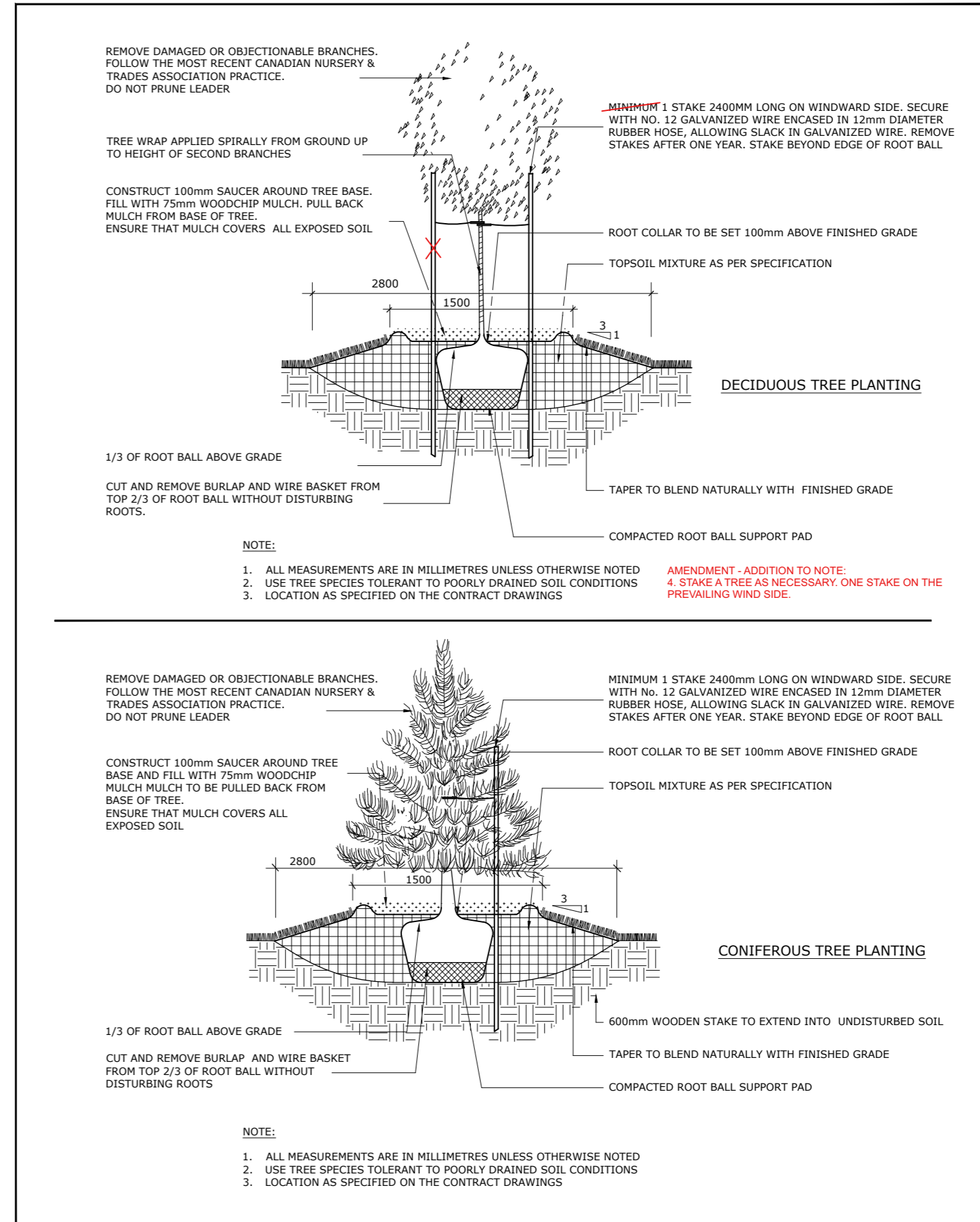
NOTES:

TREES ARE TO BE INSTALLED AS PER CITY STANDARD DETAILS; SOIL VOLUME AS PER BELOW NOTES AND MATRIX ON SHEET L-01.

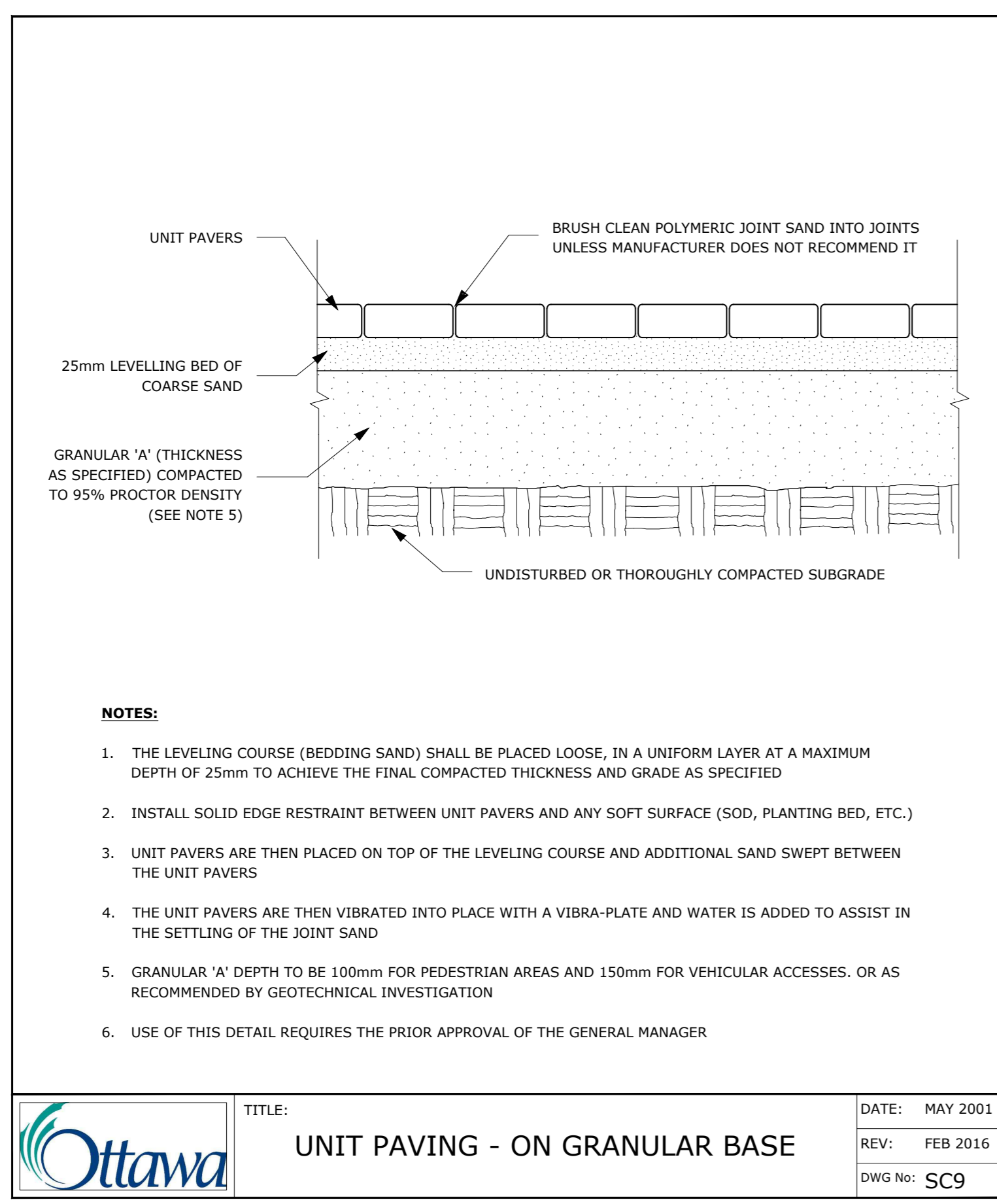
- STANDARD TREE SOIL VOLUMES QUANTITIES INCLUDE THE TOP 900-1000mm OF SOIL/EXISTING SUBSOIL LAYER TO CALCULATE TOTAL SOIL VOLUMES REQUIRED BY THE CITY OF OTTAWA FOR SUSTAINABLE TREE GROWTH. WHERE LARGER SOFT AREAS ARE AVAILABLE, THE TOP 400-500mm LAYER IS USED TO CALCULATE SOIL VOLUMES.
- WHERE EXISTING MATERIAL BELOW THE SPECIFIED TOPSOIL IS NOT CONDUCTIVE TO TREE GROWTH, AN ADDITIONAL LAYER OF PLANTING MEDIUM IS TO BE INSTALLED BELOW SPECIFIED TOPSOIL DEPTH TO OBTAIN THE SOIL VOLUME DEPTH REQUIRED.
- REFER TO SOIL VOLUME MATRIX AND PLANS FOR AREA WHERE TREE SOIL VOLUMES ARE REQUIRED.



Ottawa TITLE: PLANTING TRENCH WELL DRAINED SOILS DATE: MAY 2001
 REV: JAN 2017
 DWG No: L1

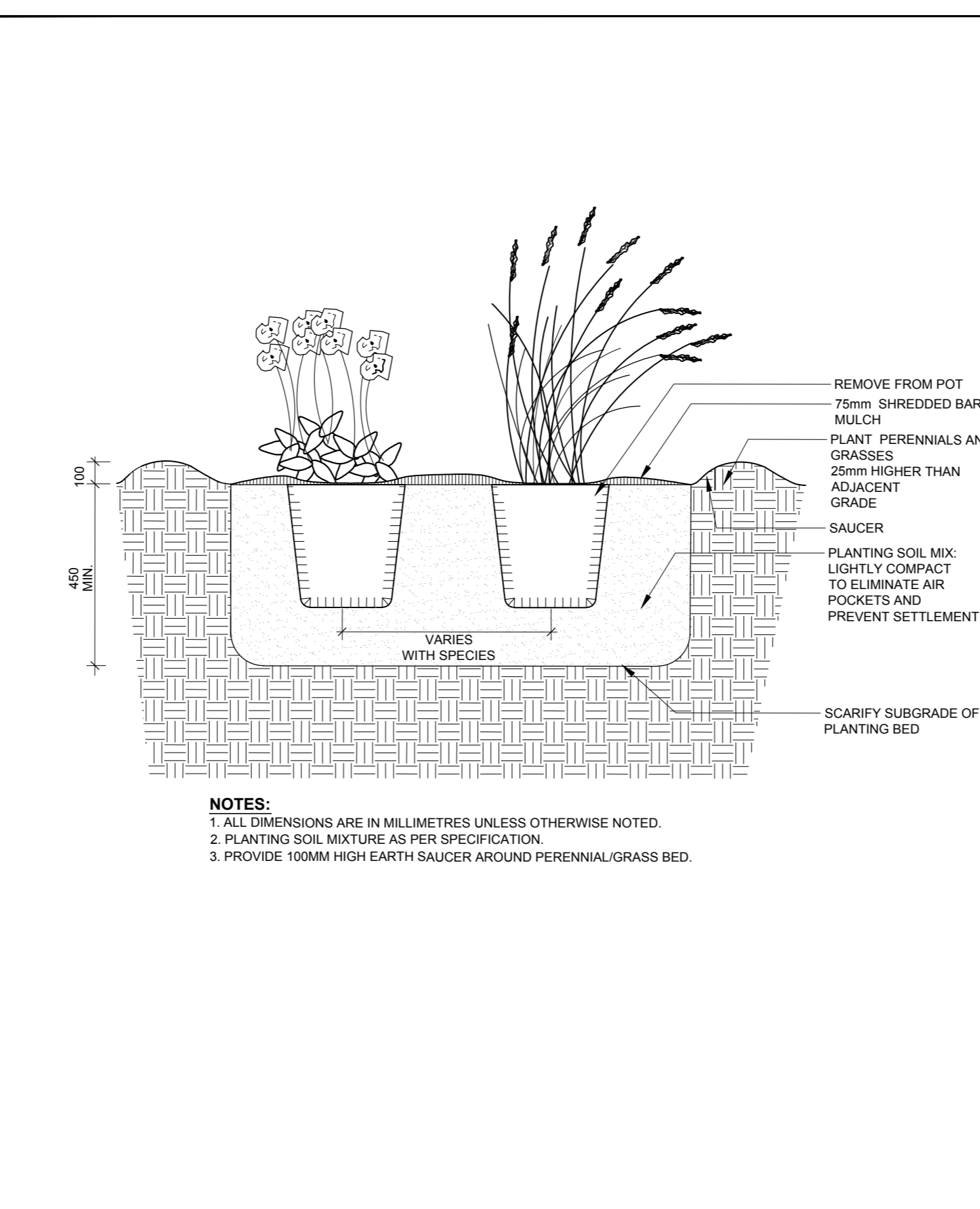


Ottawa TITLE: PLANTING PIT POORLY DRAINED SOILS DATE: MAY 2001
 REV: FEB 2017
 DWG No: L6

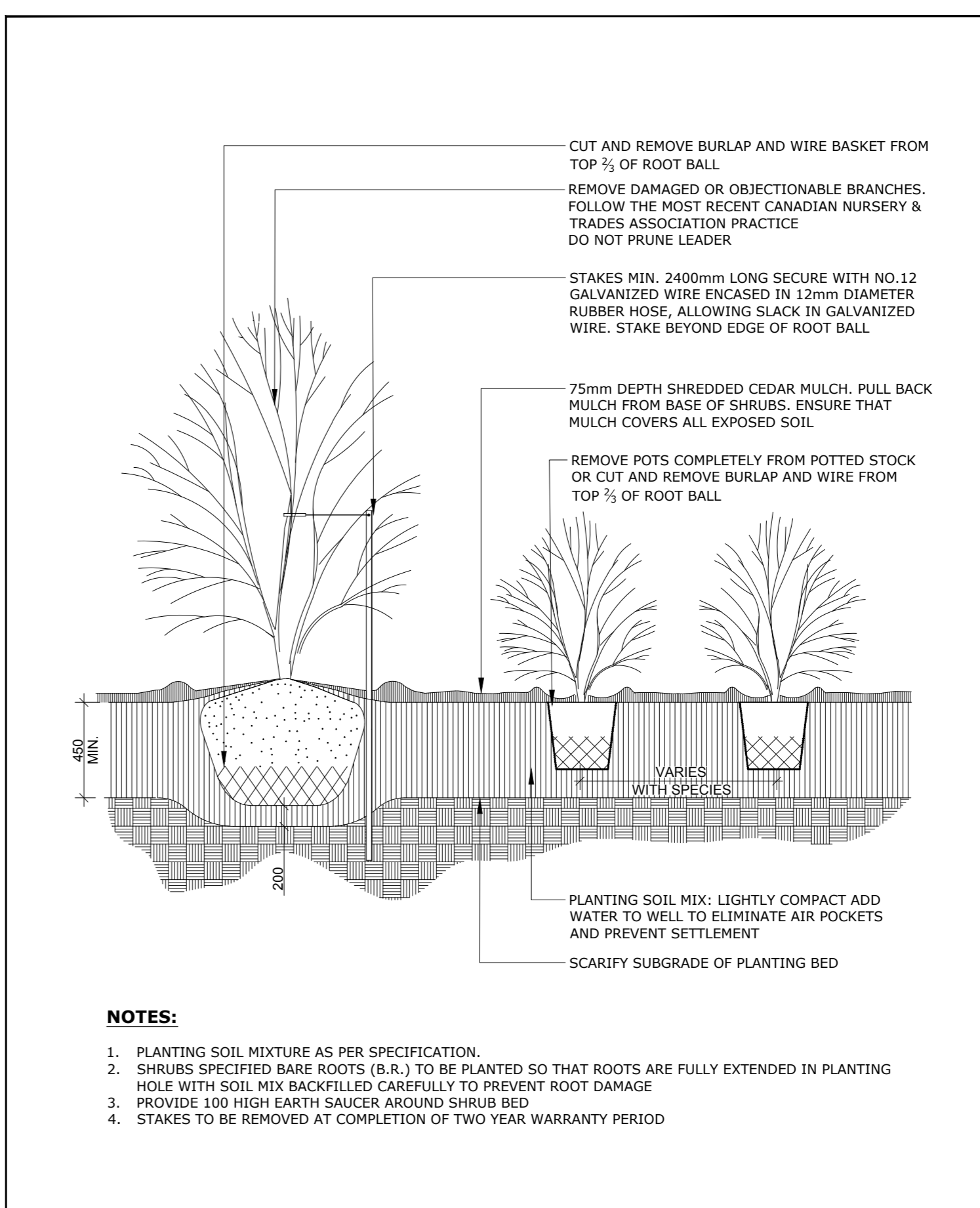


Ottawa TITLE: UNIT PAVING - ON GRANULAR BASE DATE: MAY 2001
 REV: FEB 2016
 DWG No: SC9

ADDITIONAL NOTES FOR NUMBER 5: PRECAST PAVERS IN PEDESTRIAN AREAS WHERE NORMAL SNOW REMOVALS ARE DONE IS TO RECEIVE A MINIMUM 200mm GRANULAR 'A'. FURTHER ADJUSTMENTS TO BE SPECIFIED IN RELATION TO SITE CONDITIONS AND GEOTECHNICAL RECOMMENDATIONS.



Ottawa TITLE: PERENNIAL AND ORNAMENTAL GRASS PLANTING DATE: JAN 2015
 REV:
 DWG No: L21



Ottawa TITLE: CONTINUOUS SHRUB BED PLANTING DATE: FEB 2013
 REV: FEB 2014
 DWG No: L17

6		
5		
4		
3	Issued for Site Plan Application	2023/08/31
2	Issued for Site Plan Application	2023/06/30
1	Issued for Site Plan Application	2022/12/21

ARCHITECT: CONSULTANT

ASSOCIATION OF LANDSCAPE ARCHITECTS
 MEMBER

NORTH CONSULTANT

PROJECT / LOCATION

4-Storey Mixed Use Building
 8743169 Canada Ltd

2663 Innes Road
 Ottawa, Ontario

SHEET NAME:

DETAILS

DATE:	DESIGNED BY / CONDU PAR	CHECKED BY / VERIFIE PAR
M.R.	A.A. / T.F.	M.R.
PROJECT NO.	22-1704	SHEET NO.
		L-03.