

**ELEVATION NOTES**

1. Elevations shown are geodetic and are referred to the CGVD28 geodetic datum, derived from control monument No. 01680309 having an elevation of 0.008 metres.  
 2. It is the responsibility of the user of this information to verify that the job benchmark has not been altered or disturbed and that its relative elevation and description agrees with the information shown on this drawing.

**UTILITY NOTES**

1. This drawing cannot be accepted as acknowledging all of the utilities and it will be the responsibility of the user to contact the respective utility authorities for confirmation.  
 2. Only visible surface utilities were located.  
 3. Underground utility data derived from City of Ottawa utility sheet reference J-22-13C Reference 2240 (sheet 2 of 3)  
 4. Sanitary and storm sewer grades and inverts were derived from City of Ottawa Plan  
 5. A field location of underground alert by the pertinent utility authority is mandatory before any work involving breaking ground, probing, excavating, etc.

Topographic data was collected under Winter Conditions. Snow cover and ice preclude determining location and elevation of some topographical data that is otherwise visible.

Bearings are grid, derived from northeasterly limit of part 7 on Plan 4R-25683 shown to be N 49°30'00" W and are referred to the Central Meridian of MTM Zone 9 (76°30' West Longitude) NAD-83 (original). For bearing comparisons, a rotation of 0°36'45" counter-clockwise was applied to bearings on P1, P2 & P5.

**Notes & Legend**

—○—	Denotes	Survey Monument Planted	○	Denotes	Deciduous Tree
—■—	Survey Monument Found	○	Bollard	○	Gas Meter
—SIB	Standard Iron Bar	○	Chain Link Fence	○	Hydro Meter
—SSIB	Short Standard Iron Bar	○	Location of Elevations	○	Bollard
—IB	Iron Bar	○	Top of Concrete Curb / RW Elevation	○	Diameter
—(WIT)	Witness	○	Centreline	○	Hydro Transformer
—Mes.	Measured	○	Retaining Wall	○	Invert
—(AOG)	Annis, O'Sullivan, Vollebek Ltd.	○	Underground Storm Sewer	○	Top of Grate
—(P1)	Plan SR-13905	○	Underground Sanitary Sewer	○	Overhead Wires
—(P2)	Plan SR-10910	○	Underground Water	○	Utility Pole
—(P3)	Plan 4R-25683	○	Overhead Gas	○	Anchor
—(P4)	(AOG) Plan January 23, 2007	○	Underground Wires	○	Catch Basin
—(P5)	Plan SR-14638	○	Fire Hydrant	○	Fire Hydrant
○ MH-ST	Maintenance Hole (Storm Sewer)				
○ MH-S	Maintenance Hole (Sanitary)				
—ST	Underground Storm Sewer				
—S	Underground Sanitary Sewer				
—W	Underground Water				
—G	Underground Gas				
—OW	Overhead Wires				
○ UP	Utility Pole				
—A	Anchor				
—CB	Catch Basin				
—FH	Fire Hydrant				

**SURVEYOR'S REAL PROPERTY REPORT**  
**PART 1** Plan of  
**PART OF LOT 25 AND 26**  
**CONCESSION 3 (OTTAWA FRONT)**  
**GEOGRAPHIC TOWNSHIP OF GLOUCESTER**  
**CITY OF OTTAWA**  
 Surveyed by Annis, O'Sullivan, Vollebek Ltd.

Scale 1 : 250  
 0 5 10 15 20 25 30 35 40 45 50 55 60 65 70 75 80 85 90 95 100 Metres

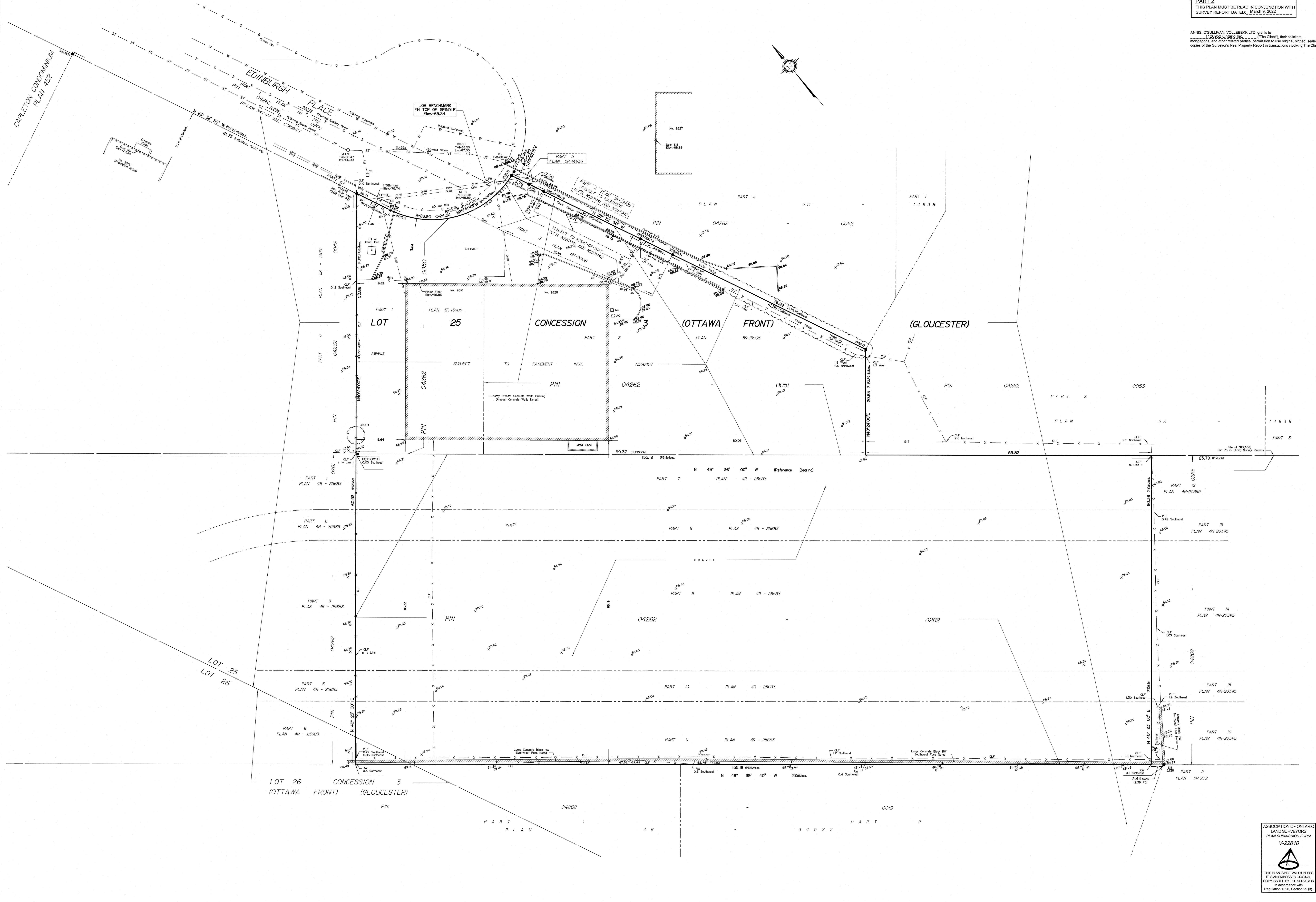
**Metric**  
 DISTANCES SHOWN ON THIS PLAN ARE IN METRES AND CAN BE CONVERTED TO FEET BY DIVIDING BY 0.3048

**Surveyor's Certificate**  
 I CERTIFY THAT:  
 1. This survey and plan are correct and in accordance with the Survey Act and the Surveyors Act and the regulations made under them.  
 2. The survey was completed on the 22nd day of February, 2022.

March 9, 2022  
 Date  
 E. H. Herweyer  
 Ontario Land Surveyor

**PART 2**  
 THIS PLAN MUST BE READ IN CONJUNCTION WITH SURVEY REPORT DATED: March 9, 2022

ANNIS, O'SULLIVAN, VOLLEBEK LTD. grants to 1125955 Ontario Inc. ("The Client"), their solicitors, mortgagees, and other related parties, permission to use original, signed, sealed copies of the Surveyor's Real Property Report in transactions involving The Client.



ASSOCIATION OF ONTARIO  
 LAND SURVEYORS  
 PLAN SUBMISSION FORM  
 V-22610  
 THIS PLAN IS NOT VALID UNLESS IT IS AN EMBOSSED ORIGINAL COPIES ISSUED BY THE SURVEYOR IN ACCORDANCE WITH REGULATION 1026, SECTION 29 (3)

© Annis, O'Sullivan, Vollebek Ltd. 2022. THIS PLAN IS PROTECTED BY COPYRIGHT.  
**ANNIS, O'SULLIVAN, VOLLEBEK LTD.**  
 14 Concession Gate, Suite 800  
 Ottawa, Ont. K2E 7S6  
 Phone: (613) 727-8850 / Fax: (613) 727-1079  
 Email: info@annisov.com  
 Ontario Land Surveyors (Reg. No. 8876-32, P.L. 105, C3 of F.F.)