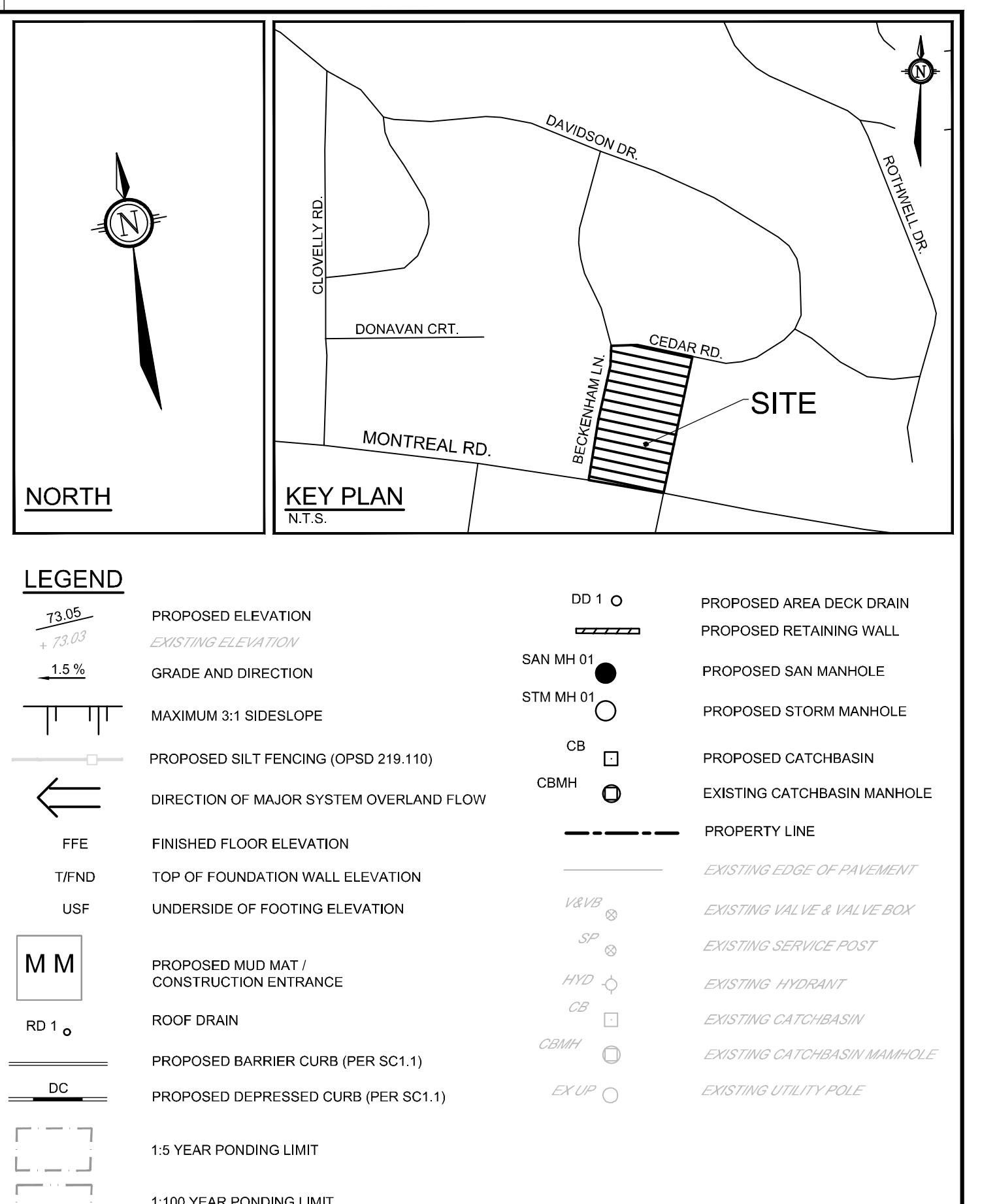
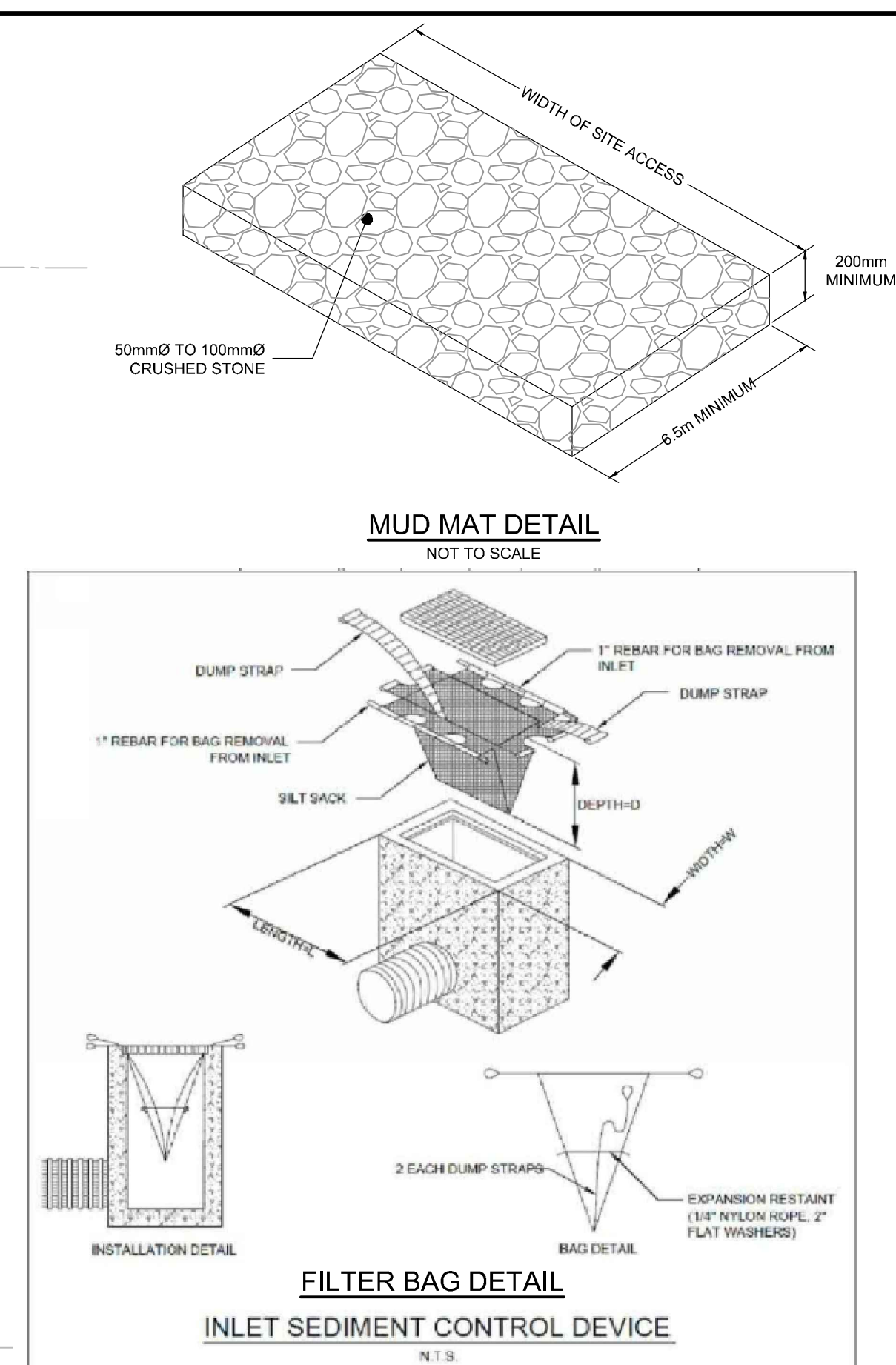
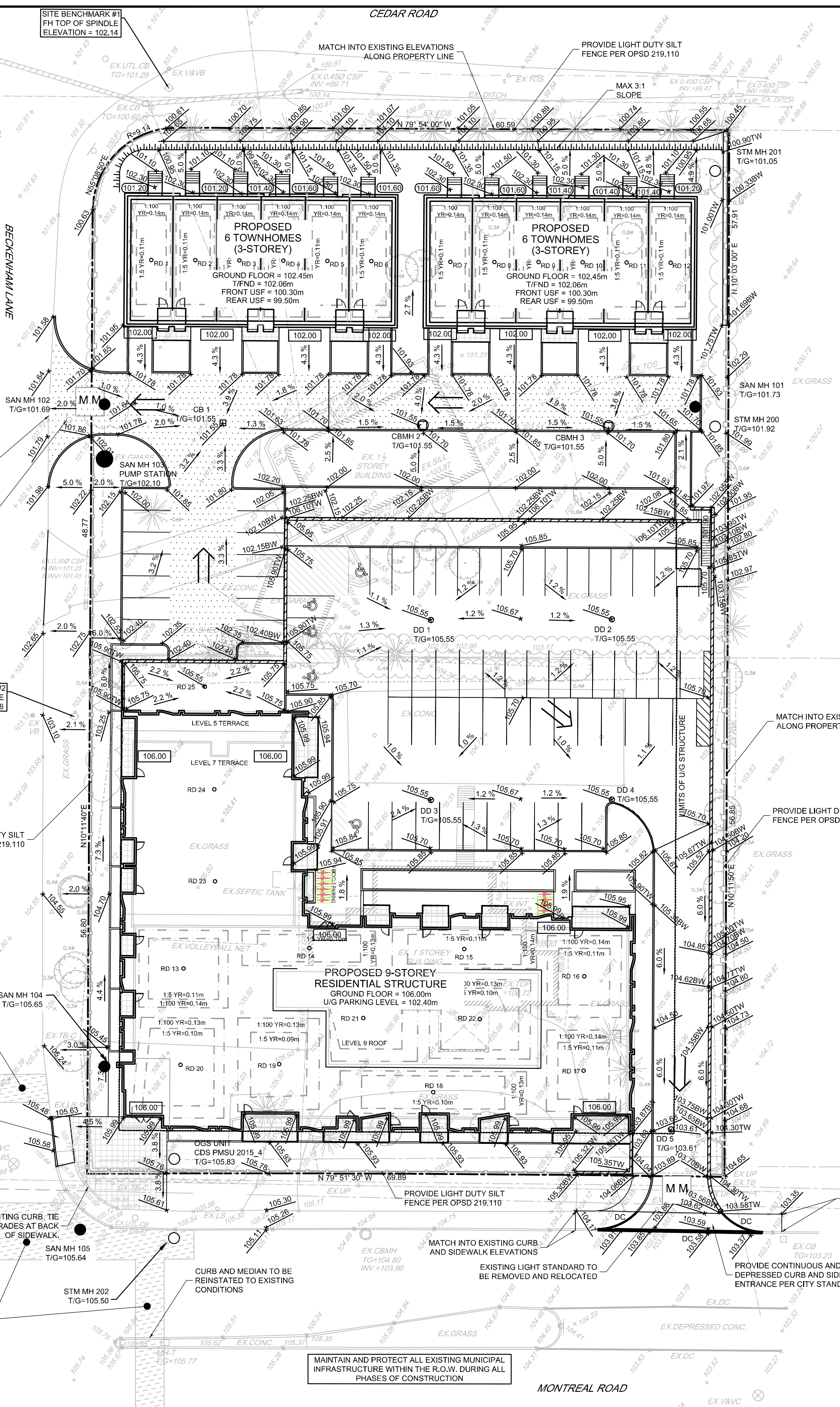


EROSION AND SEDIMENT CONTROL NOTES:

1. ALL EROSION AND SEDIMENT CONTROLS ARE TO BE INSTALLED TO THE SATISFACTION OF THE ENGINEER AND THE CITY OF OTTAWA. THEY ARE TO BE APPROPRIATE TO THE SITE CONDITIONS. PRIOR TO UNDERTAKING ANY SITE ALTERATIONS (FILLING, GRADING, REMOVAL OF VEGETATION, ETC.) AND DURING ALL PHASES OF SITE PREPARATION AND CONSTRUCTION, THESE PRACTICES ARE TO BE IMPLEMENTED IN ACCORDANCE WITH THE CURRENT BEST MANAGEMENT PRACTICES FOR EROSION AND SEDIMENT CONTROL AND SHOULD INCLUDE AS A MINIMUM THOSE MEASURES INDICATED ON THE PLAN.
2. TO PREVENT SURFACE EROSION FROM ENTERING ANY STORM SEWER SYSTEM DURING CONSTRUCTION, FILTER BAGS WILL BE PLACED UNDER GRATES OF NEARBY CATCHBASINS AND STRUCTURES. A LIGHT DUTY SILT FENCE BARRIER WILL ALSO BE INSTALLED AROUND THE CONSTRUCTION AREA (WHERE APPLICABLE). THESE CONTROL MEASURES WILL REMAIN IN PLACE UNTIL CONSTRUCTION IS COMPLETE.
3. THE SEDIMENT CONTROL MEASURES SHALL ONLY BE REMOVED WHEN, IN THE OPINION OF THE ENGINEER, THE MEASURES ARE NO LONGER REQUIRED. NO CONTROL MEASURES MAY BE PERMANENTLY REMOVED WITHOUT PRIOR AUTHORIZATION FROM THE ENGINEER.
4. THE CONTRACTOR SHALL IMMEDIATELY REPORT TO THE ENGINEER ANY ACCIDENTAL DISCHARGES OF SEDIMENT MATERIAL INTO ANY STORM SEWER SYSTEM. APPROPRIATE RESPONSE MEASURES, INCLUDING ANY REPAIRS TO EXISTING CONTROL MEASURES OR THE IMPLEMENTATION OF ADDITIONAL CONTROL MEASURES, SHALL BE CARRIED OUT BY THE CONTRACTOR WITHOUT DELAY.
5. THE CONTRACTOR ACKNOWLEDGES THAT FAILURE TO IMPLEMENT EROSION AND SEDIMENT CONTROL MEASURES MAY BE SUBJECT TO PENALTIES IMPOSED BY ANY APPLICABLE REGULATORY AGENCY.
6. ROADWAYS ARE TO BE SWEEP AS REQUIRED OR AS DIRECTED BY THE ENGINEER AND/OR MUNICIPALITY.
7. THE CONTRACTOR SHALL ENSURE PROPER DUST CONTROL IS PROVIDED WITH THE APPLICATION OF WATER (AND IF REQUIRED, CALCIUM CHLORIDE) DURING DRY PERIODS.



- LEGEND**
- 73.05 PROPOSED ELEVATION
 - EXISTING ELEVATION
 - 1.5% GRADE AND DIRECTION
 - MAXIMUM 3:1 SIDESLOPE
 - PROPOSED SILT FENCING (OPSD 219.110)
 - FFE FINISHED FLOOR ELEVATION
 - T/FND TOP OF FOUNDATION WALL ELEVATION
 - USF UNDERSIDE OF FOOTING ELEVATION
 - MM PROPOSED MUD MAT / CONSTRUCTION ENTRANCE
 - RD 1 ROOF DRAIN
 - DC PROPOSED DEPRESSED CURB (PER SC1.1)
 - 1.5 YEAR PONDING LIMIT
 - 1:100 YEAR PONDING LIMIT
 - DD 1 PROPOSED AREA DECK DRAIN
 - PROPOSED RETAINING WALL
 - SAN MH 01 PROPOSED SAN MANHOLE
 - STM MH 01 PROPOSED STORM MANHOLE
 - CB PROPOSED CATCHBASIN
 - CBMH EXISTING CATCHBASIN MANHOLE
 - PROPERTY LINE
 - EXISTING EDGE OF PAVEMENT
 - EXISTING VALVE & VALVE BOX
 - EXISTING SERVICE POST
 - EXISTING HYDRANT
 - EXISTING CATCHBASIN
 - EXISTING CATCHBASIN MANHOLE
 - EXISTING UTILITY POLE

GENERAL NOTES:

1. COORDINATE AND SCHEDULE ALL WORK WITH OTHER TRADES AND CONTRACTORS.
2. DETERMINE THE EXACT LOCATION, SIZE, MATERIAL AND ELEVATION OF ALL EXISTING UTILITIES PRIOR TO COMMENCING CONSTRUCTION. PROTECT AND ASSUME RESPONSIBILITY FOR ALL EXISTING UTILITIES WHETHER OR NOT SHOWN ON THIS DRAWING.
3. OBTAIN ALL NECESSARY PERMITS AND APPROVALS FROM THE CITY OF OTTAWA BEFORE COMMENCING CONSTRUCTION.
4. BEFORE COMMENCING CONSTRUCTION OBTAIN AND PROVIDE PROOF OF COMPREHENSIVE, ALL RISK AND OPERATIONAL LIABILITY INSURANCE FOR \$5,000,000.00. INSURANCE POLICY TO NAME OWNERS, ENGINEERS AND ARCHITECTS AS CO-INSURED.
5. COMPLETE ALL WORKS IN ACCORDANCE WITH THE MOST CURRENT CITY OF OTTAWA STANDARDS AND SPECIFICATIONS USING THE CURRENT GUIDELINES, BYLAWS AND STANDARDS INCLUDING MATERIALS OF CONSTRUCTION, DIMENSION AND ALL RELEVANT REFERENCES TO OPSS, OPSD, & AWWA GUIDELINES - ALL CURRENT VERSIONS AND AS AMENDED.
6. RESTORE ALL DISTURBED AREAS ON-SITE AND OFF-SITE, INCLUDING TRENCHES AND SURFACES ON PUBLIC ROAD ALLOWANCES TO EXISTING CONDITIONS OR BETTER TO THE SATISFACTION OF THE CITY OF OTTAWA AND ENGINEER.
7. REMOVE FROM SITE ALL EXCESS EXCAVATED MATERIAL, ORGANIC MATERIAL AND DEBRIS UNLESS OTHERWISE INSTRUCTED BY ENGINEER. EXCAVATE AND REMOVE FROM SITE ANY CONTAMINATED MATERIAL. ALL CONTAMINATED MATERIAL SHALL BE DISPOSED OF AT A LICENSED LANDFILL FACILITY.
8. ALL ELEVATIONS ARE GEODETIC.
9. REFER TO GEOTECHNICAL REPORT (No. PG5736-1, DATED APRIL 23, 2021), PREPARED BY PATERSON GROUP. FOR SUBSURFACE CONDITIONS, CONSTRUCTION RECOMMENDATIONS, AND GEOTECHNICAL INSPECTION REQUIREMENTS. THE GEOTECHNICAL CONSULTANT IS TO REVIEW ON-SITE CONDITIONS AFTER EXCAVATION PRIOR TO PLACEMENT OF THE GRANULAR MATERIAL.
10. REFER TO ARCHITECTS AND LANDSCAPE ARCHITECTS DRAWINGS FOR BUILDING AND HARDSURFACE AREAS AND DIMENSIONS.
11. REFER TO DEVELOPMENT SERVICING AND STORMWATER MANAGEMENT REPORT (R-2022-206) PREPARED BY NOVATECH ENGINEERING CONSULTANTS LTD.
12. SAW CUT AND KEY GRIND ASPHALT AT ALL ROAD CUTS AND ASPHALT TIE IN POINTS AS PER CITY OF OTTAWA STANDARDS (R10).
13. PROVIDE LINE/PARKING PAINTING.
14. CONTRACTOR TO PROVIDE THE CONSULTANT WITH A GENERAL PLAN OF SERVICES AND GRADING PLAN INDICATING ALL SERVICING AS-BUILT INFORMATION SHOWN ON THE PLANS. AS-BUILT INFORMATION MUST INCLUDE: PIPE MATERIALS, SIZES, LENGTHS, SLOPES, INVERT AND TIG ELEVATIONS, STRUCTURE LOCATIONS, VALVE AND HYDRANT LOCATIONS, T/W/M ELEVATIONS, ANY ALIGNMENT CHANGES, AND ALL SURFACE ELEVATION AS BUILT GRADES.

GRADING NOTES:

1. ALL TOPSOIL, ORGANIC OR DELETERIOUS MATERIAL MUST BE ENTIRELY REMOVED FROM BENEATH THE PROPOSED PAVED AREAS AS DIRECTED BY THE SITE ENGINEER OR GEOTECHNICAL ENGINEER.
2. EXPOSED SUBGRADES IN PROPOSED PAVED AREAS SHOULD BE PROOF ROLLED WITH A LARGE STEEL DRUM ROLLER AND INSPECTED BY THE GEOTECHNICAL ENGINEER PRIOR TO THE PLACEMENT OF GRANULARS.
3. ANY SOFT AREAS EVIDENT FROM THE PROOF ROLLING SHOULD BE SUB-EXCAVATED AND REPLACED WITH SUITABLE MATERIAL THAT IS FROST COMPATIBLE WITH THE EXISTING SOILS AS RECOMMENDED BY THE GEOTECHNICAL ENGINEER.
4. THE GRANULAR BASE SHOULD BE COMPACTED TO AT LEAST 100% OF THE STANDARD PROCTOR MAXIMUM DRY DENSITY VALUE. ANY ADDITIONAL GRANULAR FILL USED BELOW THE PROPOSED PAVEMENT SHOULD BE COMPACTED TO AT LEAST 95% OF THE STANDARD PROCTOR MAXIMUM DRY DENSITY VALUE.
5. MINIMUM OF 2% GRADE FOR ALL GRASS AREAS UNLESS OTHERWISE NOTED.
6. MAXIMUM TERRACING GRADE TO BE 3:1 UNLESS OTHERWISE NOTED.
7. ALL GRADES BY CURBS ARE EDGE OF PAVEMENT GRADES UNLESS OTHERWISE INDICATED.
8. ALL CURBS SHALL BE BARRIER CURB (150mm) UNLESS OTHERWISE NOTED AND CONSTRUCTED AS PER CITY OF OTTAWA STANDARDS (SC1.1).
9. REFER TO LANDSCAPE PLAN FOR PLANTING AND OTHER LANDSCAPE FEATURE DETAILS.
13. CONTRACTOR TO PROVIDE THE CONSULTANT WITH A GRADING PLAN INDICATING AS-BUILT ELEVATIONS OF ALL DESIGN GRADES SHOWN ON THIS PLAN.

PAVEMENT STRUCTURE:

- LIGHT DUTY
50mm H/L3 OR SUPERPAVE 12.5 ASPHALTIC CONCRETE
150mm OPSS GRAN "A" CRUSHED STONE
300mm OPSS GRAN "B" TYPE II
- HEAVY DUTY
40mm SUPERPAVE 12.5 ASPHALTIC CONCRETE
50mm SUPERPAVE 19.0 ASPHALTIC CONCRETE
150mm OPSS GRAN "A" CRUSHED STONE
400mm OPSS GRAN "B" TYPE II

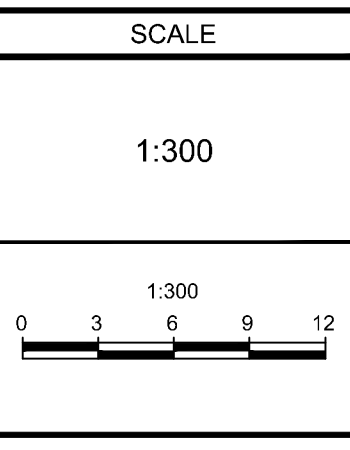
Erosion and Sediment Control Responsibilities:

ESC Measure	Symbol	Specification	Installation Responsibility	During Construction		After Construction Prior to Final Acceptance		After Final Acceptance	
				Inspection/Maintenance Responsibility	Inspection Frequency	Approval to Remove	Removal Responsibility	Inspection/Maintenance Responsibility	
Silt Fence		OPSD 219.110	Developer's Contractor	Developer's Contractor	Weekly (as a minimum)	Consultant	Developer's Contractor	N/A	
Filter Fabric		Location as Indicated On Plans	Developer's Contractor	Developer's Contractor	Weekly (as a minimum)	Consultant	Developer's Contractor	N/A	
Mud Mat		Drawing Details	Developer's Contractor	Developer's Contractor	Weekly (as a minimum)	Developer's Contractor	Developer's Contractor	N/A	
Dust Control		Location as Required Around Site	Developer's Contractor	Developer's Contractor	Weekly (as a minimum)	Consultant	Developer's Contractor	N/A	
Stabilized Material Stockpiling		Location as Required by Contractor	Developer's Contractor	Developer's Contractor	Weekly (as a minimum)	Developer's Contractor	Developer's Contractor	N/A	
Sediment Basin (for flows being pumped out of excavations)		Location as Required by Contractor	Developer's Contractor	Developer's Contractor	After Every Rainstorm	Developer's Contractor	Developer's Contractor	N/A	

NOTE:
THE POSITION OF ALL POLE LINES, CONDUITS, WATERMANS, SEWERS AND OTHER UNDERGROUND AND OVERGROUND UTILITIES AND STRUCTURES IS NOT NECESSARILY SHOWN ON THE CONTRACT DRAWINGS, AND WHERE SHOWN, THE ACCURACY OF THE POSITION OF SUCH UTILITIES AND STRUCTURES IS NOT GUARANTEED. BEFORE STARTING WORK, DETERMINE THE EXACT LOCATION OF ALL SUCH UTILITIES AND STRUCTURES AND ASSUME ALL LIABILITY FOR DAMAGE TO THEM.

OWNER INFORMATION
LANDRIC HOMES
63 MONTREAL ROAD EAST
GATINEAU, QUEBEC, J8M 1K3
NAME: ERIC DANIS
PHONE: (819) 593-4805
ericdanis@constructionlaverendrye.com

No.	REVISION	DATE	BY
1.	ISSUED FOR SITE PLAN APPLICATION	DEC 20/22	MS



DESIGN	LSC
CHECKED	MS
DRAWN	LSC
CHECKED	MS
APPROVED	MS

FOR REVIEW ONLY

NOVATECH
Engineers, Planners & Landscape Architects
Suite 200, 240 Michael Cowpland Drive
Ottawa, Ontario, Canada K2M 1P6
Telephone: (613) 254-9643
Facsimile: (613) 254-5867
Website: www.novatech-eng.com

LOCATION
CITY OF OTTAWA
1765 MONTREAL ROAD

DRAWING NAME
GRADING AND EROSION & SEDIMENT CONTROL PLAN

PROJECT No. 121060
REV #1
DRAWING No. 121060-GR