



September 19, 2023

Project No. CA-GLD-22572533 Rev.1

**Nathanael Niedermann, Development Coordinator**

RF Kanata LP I.  
C/O Rosefellow Holdings  
750 Marcel-Laurin, Suite 210  
Saint-Laurent, Québec, H4M 2M4

**UPDATED ADDENDUM TO THE SCOPED ENVIRONMENTAL IMPACT ASSESSMENT AND TREE CONSERVATION REPORT FOR THE PROPOSED DEVELOPMENT OF 405 HUNTMAR DRIVE, OTTAWA, ON**

Mr. Niedermann,

## 1.0 INTRODUCTION

WSP Canada Inc. (WSP; formerly Golder Associates Ltd.) was retained by RF Kanata LP I. to conduct environmental studies for a Scoped Environmental Impact Statement (EIS) and Tree Conservation Report (TCR) for the proposed commercial development at 405 Huntmar Drive, Ottawa, Ontario (The Site; Figure 1). A preliminary Scoped EIS and TCR was prepared and submitted to the City of Ottawa in December 2022 (WSP 2022), with the recommendation that, following additional study, an addendum be prepared to confirm or update the findings of the preliminary Scoped EIS and TCR. This letter is intended to act as that addendum.

## 2.0 METHODS

As recommended in the preliminary Scoped EIS and TCR, additional field surveys and documentation were completed in 2023 by a qualified biologist (Fergus Nicoll, Dip. T; over 20 years experience) for this addendum as follows:

- Headwater Drainage Features (HDF) Assessment (April 13; May 24)
- Two breeding bird surveys, including for common nighthawk (*Chordeiles minor*) (May 24; June 19)
- Bumblebee and snake hibernaculum surveys during all survey events (April 13; May 24; June 19)
- Tree inventory / characterize groupings (June 19; September 1)

The methods for each of these survey types is described below.

### 2.1 Headwater Drainage Features Assessment

WSP completed field investigations at the Site to confirm the presence or absence of a small, mapped surface water feature at the northern boundary of the Site. This feature was not clearly evident during the initial site visit performed for the preliminary Scoped EIS and TCR, as it was performed late in the season (August 22, 2022).

Additional effort was expended as part of this addendum to see if the feature was evident during spring freshet. If present, WSP was to complete an HDF assessment. This assessment evaluates and classifies features following the Evaluation, Classification, and Management of Headwater Drainage Features Guidelines (the Guidelines) developed by the Toronto and Region Conservation Authority and Credit Valley Conservation (TRCA and CVC 2014). The assessment is based on data collected in the on-Site surface water feature according to Ontario Stream Assessment Protocol (OSAP) Section 4 Module 11 – Unconstrained Headwater Sampling (Gorenc and Stanfield March 2017). Information gathered included basic measurements (wetted width and depth; feature width; bankfull depth; flow rates; etc.) as well as information on substrates, sediment deposition, barriers to fish movement, riparian conditions, etc. If flow persisted past spring freshet, electrofishing to characterize the fish community would be undertaken in accordance with the protocols.

## **2.2 Breeding Bird Surveys**

Two early morning breeding bird surveys (BBS) were conducted on the Site following standard protocols (Sauer et al. 2008; Cadman et al. 2007). Surveys were conducted at point-count stations distributed throughout all habitats on the Site (including potential species at risk [SAR] habitat) and occurred between 30 minutes before sunrise and 10:00 am to encompass the period of maximum bird song. During these surveys, common nighthawk were also surveyed for and also through searching the small areas of suitable nesting habitat on foot. A list of all species encountered was compiled, and the locations of any SAR were marked using a hand-held GPS.

## **2.3 Snake Hibernaculum and Bumble Bee Surveys**

During all site investigations, area searches for wildlife were conducted, including for those species groups not specifically targeted through the surveys described above. These visual encounter surveys were conducted following recommended procedures (McDiarmid 2012; Bookhout 1994; Pyle 1984; MNRF 2013; MNRF 2016), where possible, focusing on the potential use of the Site as a snake hibernaculum and for bumble bees. All species observed (including direct observations, calls, tracks, and other signs) were recorded.

## **2.4 Tree Conservation Report Data Collection**

An inventory of all trees greater than 10 centimetres (cm) diameter at breast height (DBH) on the Site was undertaken, including a description of the species composition, sizes, age class, and health condition of the trees. Where tree cover was extensive, tree groupings were identified rather than an inventory of each individual tree. Additional information on the environmental value of the trees, including presence of any significant trees, was documented, and marked in the field. Additional information relating to ownership of trees along the Site boundary as well as DBH of trees in the northern hedgerow was also gathered.

## **3.0 RESULTS**

### **3.1 Headwater Drainage Features Assessment**

The mapped feature was evident during the April 13 field survey through the presence of standing water, however; the feature was seen to be dry during the May 24 and June 19 field survey, indicating it is ephemeral and likely the result of snow melt accumulating in this area (Attachment A; Photos 1 and 2). The feature was seen to overlap the Site in the form of a small swale running parallel to and within the hedgerow (see Figure 1) then extending north of the Site and eventually connecting to the roadside ditch along Huntmar Drive. An assessment of the feature, where present on the Site, was completed in accordance with the Guidelines (TRCA and CVC 2014), the results of which are presented in Table 1. No fish sampling was completed as the feature was dry during the appropriate window for sampling.

**Table 1: Headwater Drainage Feature Assessment**

Hydrology	Riparian	Fish and Fish Habitat	Terrestrial Habitat	Management Recommendation
E – Limited Functions (FT = 7; FC = 1/2)	B – Important Functions (FT = 7; Veg = 5)	C - Contributing Functions	D – Limited Functions (FT = 7; No amphibian breeding habitat)	Maintain / Replicate Terrestrial Linkage

The management recommendation for this feature, per Table 1, is to maintain or replicate the terrestrial linkage. This management recommendation is intended for feature “with no flow with woody riparian vegetation that connects two other natural features identified for protection”. The feature represents the southern tip of a headwater drainage feature, and so does not perform any linkage function.

Based on WSP’s analysis, the feature does not provide fish habitat as no flows or direct connection to any surface water features providing fish habitat were observed.

### 3.2 Breeding Bird Surveys

Species observed during the breeding bird surveys are common or introduced in the province (S4, S5 or SE) and typical of urbanizing and disturbed landscapes, including: red-winged blackbird (*Agelaius phoeniceus*), song sparrow (*Melospiza melodia*), American goldfinch (*Spinus tristis*), American robin (*Turdus migratorius*), European starling (*Sturnus vulgaris*), common grackle (*Quiscalus quiscula*), yellow warbler (*Setophaga petechia*), common yellowthroat (*Geothlypis trichas*), savannah sparrow (*Passerculus sandwichensis*), northern cardinal (*Cardinalis cardinalis*), tree sparrow (*Spizelloides arborea*), mourning dove (*Zenaida macroura*), chipping sparrow (*Spizella passerina*), American crow (*Corvus brachyrhynchos*), house finch (*Haemorhous mexicanus*) and rock pigeon (*Columba livia*). No SAR birds were observed during the field surveys.

### 3.3 Snake Hibernaculum and Bumble Bee Surveys

No evidence of use of the Site as a hibernaculum for snakes (i.e., no congregations of snakes around the area of buried rubble during warm, sunny days in spring) was observed during the targeted field surveys. Bumblebees observed during surveys included common eastern bumblebee (*Bombus impatiens*), two-spotted bumblebee (*Bombus bimaculatus*), and brown-belted bumblebee (*Bombus griseocollis*). No SAR bumble bee species were observed during the targeted field surveys.

### 3.4 Tree Inventory

Tree cover on the Site was divided into three main groupings, as well as several individual trees (Map 1; Photos 3-8) as detailed in Tables 2 and 3 below:

TREE #	SPECIES	DBH (CM)	LOCATION / OWNERSHIP	CONDITION / NOTES	RECOMMENDATION
1	Apple ( <i>Malus pumila</i> )	36, 42	Adjacent (private)	Fair, two-stemmed	Retain; CRZ does not overlap Site
2	White elm ( <i>Ulmus americana</i> )	47	Shared (on the property line)	Good, two-stemmed	Retain; Fence entire CRZ

TREE #	SPECIES	DBH (CM)	LOCATION / OWNERSHIP	CONDITION / NOTES	RECOMMENDATION
3	Manitoba maple ( <i>Acer negundo</i> )	68	On-Site (proponent)	Poor, half dead, covered in dense wild grape ( <i>Vitis riparia</i> ) vines	Remove
4	Manitoba Maple	18-32	Shared (on the property line)	Fair, multi-stemmed, gnarly	Retain; Fence entire CRZ
5	Hawthorn ( <i>Crataegus</i> sp.)	10-11	Adjacent (private)	Good, multi-stemmed	Retain; CRZ does not overlap Site
6	Manitoba Maple	82	Shared (on the property line)	Good	Retain; Fence entire CRZ
7	Hawthorn	12-13	Shared (on the property line)	Good, two-stemmed	Retain; Fence entire CRZ

No other live trees > 10 cm DBH on adjacent properties or of shared ownership that may have CRZ over-lapping the Site were observed.

TREE GROUPING #	SPECIES	DBH (CM)	LOCATION	CONDITION / NOTES	RECOMMENDATION
1	White spruce ( <i>Picea alba</i> ) 100%	15-32	On-site	Good, planted	Remove
2	Poplar ( <i>Populus</i> sp.) 100%	10-32	On-site	Good, appear to be hybrids	Remove
3	Manitoba maple ( <i>Acer negundo</i> ) 60%	12-58	On-site	Poor to fair, mixed with buckthorn thicket and containing dead standing ash	Remove except portions that overlaps with protected CRZs and areas outside the area of disturbance (see Table 2, Map 2)
	Black cherry ( <i>Prunus serotina</i> ) 20%	26-31			
	Apple ( <i>Malus pumila</i> ) 20%	18-38			

## 4.0 UPDATED IMPACT ASSESSMENT

The final design plan is shown on Map 2. This design plan has been slightly revised compared to the design plan that was submitted as part of the preliminary Scoped EIS and TCR. The key changes include:

- An increase in the number of proposed trees planted from 75 to 149.
- The watermain and 6 m easement have been shifted at the back of the drive aisle curb to provide clearance for the CRZ of the trees 4 and 7.
- The curb on the drive aisle has been curved to provide clearance to grade down to tie-in to existing grades to protect the existing tree 4.
- The swale, catch basins and grading tie-in along the north property line adjacent Building A has been relocated farther away from the existing northern hedgerow to provide adequate clearance.

## 4.1 Headwater Drainage Feature

Based on the results of the additional field surveys and analysis presented in this letter, the feature is not fish habitat, but it is a headwater drainage feature. As noted in Section 3.1, the management recommendation per the Guidelines is to maintain the terrestrial linkage function of this feature, however; this feature is the southern tip of the headwater drainage feature and so offers no terrestrial connection between two natural areas. The proposed development will remove the on-Site portion of this feature (Map 2), but as noted, it does not perform any linkage function so no impacts to the identified functions of this feature are anticipated. No further consideration of this feature is warranted. No updates to the original conclusions of the Scoped EIS and TCR are required.

## 4.2 Species at Risk

No SAR were encountered at the Site during the additional field surveys. Based on these results, no updates to the original conclusions of the Scoped EIS and TCR are required.

## 4.3 Tree Cover

The proposed impacts to tree cover are illustrated on Map 2. The proposed development will remove the majority of the existing tree cover on the Site (approximately 45 trees >10 cm DBH), with the exception of the eastern end of Tree Grouping 3 and individual trees along the northern Site boundary in the northern hedgerow (Map 2). This has been achieved through minor alterations to the proposed design plan to provide further protection of the northern hedgerow as detailed in Section 4.0. Protection measures are shown on Map 2 and were detailed in the original Scoped EIS and TCR.

Section 4.8.2 of the Official Plan provides strong direction to maintain the urban forest canopy and its ecosystem services during intensification noting priority should be given to the retention and protection of large, healthy trees over replacement plantings and compensation. Due a City of Ottawa requirement, a watermain was needed to link Upper Canada Street to Huntmar Drive. It was required to have the watermain pass along the northern property line, away from the truck court where there was a concern of the additional loading on the watermain, which is the cause of removal of much of Tree Grouping 3.

The proposed tree removal will be compensated for by the proposed planting of 149 trees on the Site, which exceeds the number of trees >10 cm DBH proposed for removal (approximately 45 trees). This will result in a net gain of tree cover at the Site and will have a positive cumulative impact on the urban forest, over time and space. The impact of the tree removal from a natural heritage functions standpoint were assessed as part of the preliminary Scoped EIS and TCR, as well as within this Addendum. No updates to the original conclusions of the Scoped EIS and TCR are required. Tree planting recommendations and species to be used are described in the landscaping plan (Novatech 2023).

## 5.0 CONCLUSIONS

Based on the additional information gathered for the Site, the conclusions and recommendations of the preliminary Scoped EIS and TCR remain accurate and appropriate. No additional significant natural features or other features requiring consideration were observed during the additional field effort, and no additional mitigation measures are recommended.

Based on the conclusions of this addendum, provided all mitigation measures as outlined in the preliminary Scoped EIS and TCR are followed, no impacts to the natural environment are anticipated to result from the proposed development.

## 6.0 LIMITATIONS AND USE OF REPORT

This report was prepared for the exclusive use of RF Kanata LP I. The report, which specifically includes all tables, figures and appendices, is based on data and information collected by WSP Canada Inc. and is based solely on the conditions of the properties at the time of the work, supplemented by historical information and data obtained by WSP Canada Inc. as described in this report.

WSP Canada Inc. has relied in good faith on all information provided and does not accept responsibility for any deficiency, misstatements, or inaccuracies contained in the report as a result of omissions, misinterpretation, or fraudulent acts of the persons contacted or errors or omissions in the reviewed documentation.

The services performed, as described in this report, were conducted in a manner consistent with that level of care and skill normally exercised by other members of the engineering and science professions currently practicing under similar conditions, subject to the time limits and financial and physical constraints applicable to the services.

Any use which a third party makes of this report, or any reliance on, or decisions to be made based on it, are the responsibilities of such third parties. WSP Canada Inc. accepts no responsibility for damages, if any, suffered by any third party as a result of decisions made or actions based on this report.

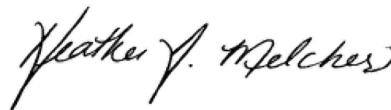
The findings and conclusions of this report are valid only as of the date of this report. If new information is discovered in future work, including excavations, borings, or other studies, WSP Canada Inc. should be requested to re-evaluate the conclusions of this report, and to provide amendments as required.

Sincerely,

**WSP Canada Inc.**



Gwendolyn Weeks, H.B.Sc.Env.  
Lead Ecologist



Heather Melcher, M.Sc.  
Director, Ecology - Ontario Earth & Environment

GW/HM/ca

[https://golderassociates.sharepoint.com/sites/169109/project/files/6/deliverables/scoped\\_eis\\_addendum\\_and\\_tcr/22572533\\_405\\_huntmar\\_scoped\\_eis\\_addendum\\_final\\_version\\_2.docx](https://golderassociates.sharepoint.com/sites/169109/project/files/6/deliverables/scoped_eis_addendum_and_tcr/22572533_405_huntmar_scoped_eis_addendum_final_version_2.docx)

CC: N/A

Attachments: Figure 1 – Site Location and Existing Conditions  
Attachment A – Photographic Inventory  
Map 1 – Existing Tree Cover  
Map 2 – Proposed Alteration to Tree Cover

## 7.0 REFERENCES

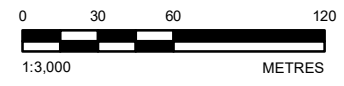
- Bookhout T.A., Editor. 1994. Research and management techniques for wildlife and habitats. Fifth ed. The Wildlife Society, Bethesda M.D. 740 pp.
- Cadman, M.D., D. A. Sutherland , G. G. Beck , D. Lepage , and A. R. Couturier , editors. 2007. Co-published by Bird Studies Canada, Environment Canada, Ontario Field Ornithologists, Ontario Ministry of Natural Resources, and Ontario Nature, Toronto, xxii + 706 pp. ISBN 978-1-896059-15-0.
- Gorenc, S., Stanfield, L. 2017. Ontario Stream Assessment Protocol (OSAP) – Section 4, Module 11: Unconstrained Headwater Sampling.
- McDiarmid, R. W. 2012. Reptile Biodiversity. Standard Methods for Inventory and Monitoring. Mercedes S. Foster, Craig Guyer, J. Whitfield Gibbons, Neil Chernoff (Eds.). University of California Press. 412 pp.
- Ontario Ministry of Natural Resources and Forestry (MNRF). 2013, May. Reptile and Amphibian Training Workshop. Elbow Lake Environmental Education Centre, Kingston, Ontario.
- Ontario Ministry of Natural Resources and Forestry (MNRF). 2016. Survey Protocol for Ontario's Species at Risk Snakes. Ontario Ministry of Natural Resources and Forestry, Species Conservation Policy Branch. Peterborough, Ontario. ii + 17 pp.
- Pyle R.M. 1984. The Audubon Society Handbook for Butterfly Watchers. New York. Charles Schribner's Sons.
- Sauer, J. R., J. E. Hines, and J. Fallon. 2008. The North American Breeding Bird Survey, Results and Analysis 1966 – 2007. Version 5.15.2008. USGS Patuxent Wildlife Research Center, Laurel, Maryland, USA.
- Toronto Region Conservation Authority (TRCA) and Credit Valley Conservation (CVC). 2014. Evaluation, Classification and Management of Headwater Drainage Features Guidelines. 25 pp.



- LEGEND**
- ROADWAY
  - HEADWATER DRAINAGE FEATURE
  - WATERBODY
  - SITE
  - 120 m STUDY AREA

**NOTE(S)**  
1. ALL LOCATIONS ARE APPROXIMATE

**REFERENCE(S)**  
1. CONTAINS INFORMATION LICENSED UNDER THE OPEN GOVERNMENT LICENCE - ONTARIO  
2. COORDINATE SYSTEM: NAD 1983 UTM ZONE 18N, PROJECTION: TRANSVERSE MERCATOR, DATUM: NORTH AMERICAN 1983



CLIENT  
RF KANATA LP I.

PROJECT  
EIS AND TCR ADDENDUM  
405 HUNTMAR DRIVE, OTTAWA, ON

TITLE  
**SITE PLAN**

CONSULTANT	YYYY-MM-DD	2023-06-23
	DESIGNED	---
	PREPARED	JEM
	REVIEWED	GW
	APPROVED	HM



PROJECT No. 22572533 CONTROL 0002 REV. 0 FIGURE 1

Path: S:\Clients\Borland\Draw\_Holding\405\_Huntmar\_Drive\_Ottawa\980\_PROJ\22572533\0002\_EIS\_TCR\_Addendum\22572533-0002-HK-0001.mxd

IF THIS MEASUREMENT DOES NOT MATCH WHAT IS SHOWN, THE SHEET SIZE HAS BEEN MODIFIED FROM: 28mm





Photo 1: Headwater Drainage Feature April 2023



Photo 2: Headwater Drainage Feature May 2023



Photo 3: Tree Grouping 1



Photo 4: Tree Grouping 2



Photo 5: Tree Grouping 3



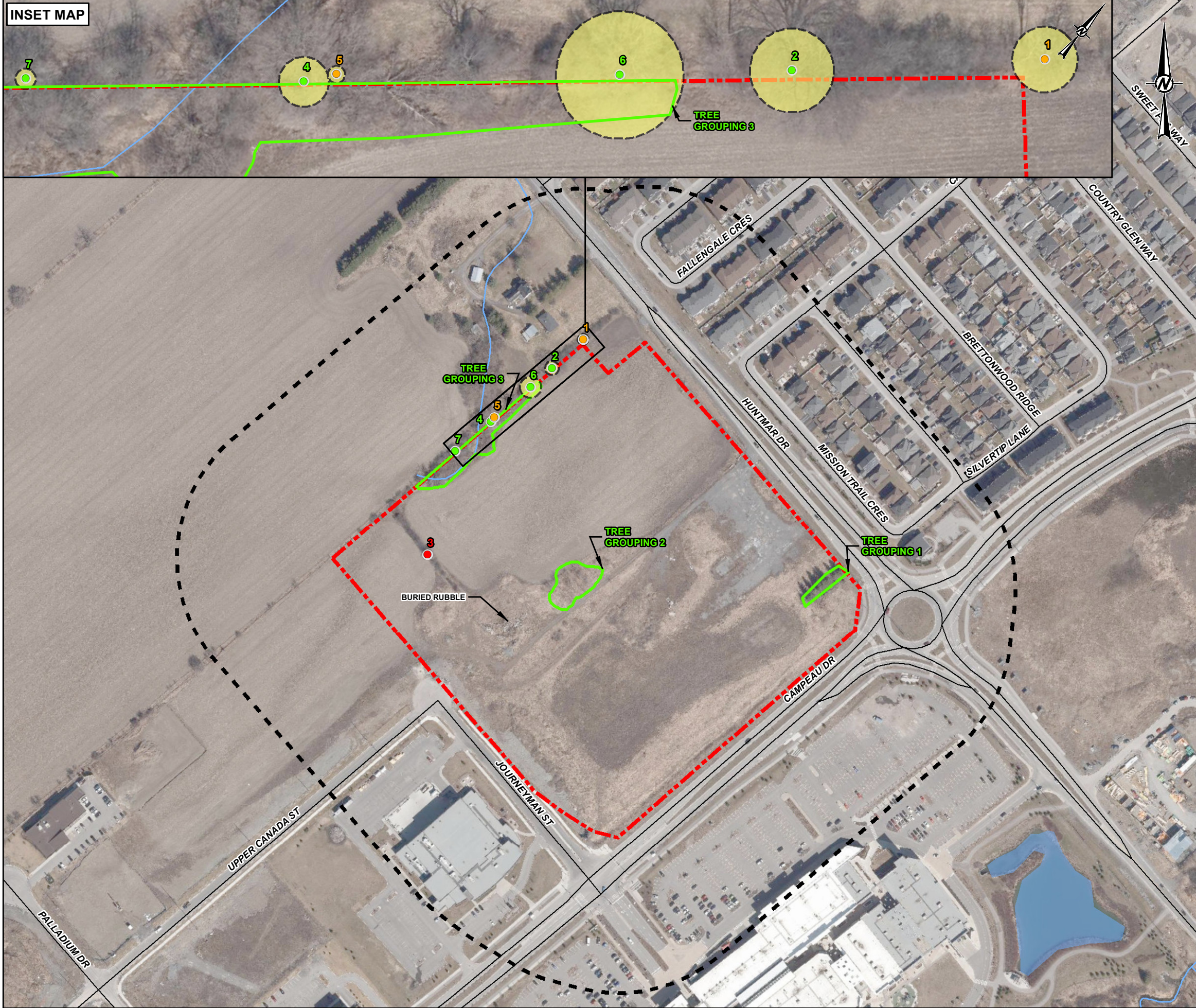
Photo 6: Tree 1



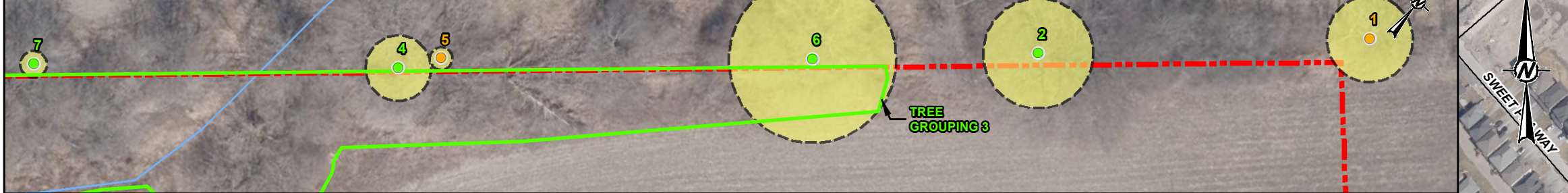
Photo 7: Tree 2



Photo 8: Tree 3



**INSET MAP**



**KEY MAP**



SCALE 1:50,000

**LEGEND**

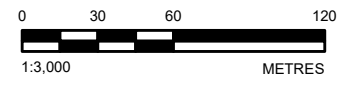
- TREE - ON-SITE OWNERSHIP
- TREE - PRIVATE OWNERSHIP
- TREE - SHARED OWNERSHIP
- TREE GROUPING
- CRITICAL ROOT ZONE (CRZ)
- ROADWAY
- HEADWATER DRAINAGE FEATURE
- WATERBODY
- SITE
- 120 m STUDY AREA

**NOTE(S)**

1. ALL LOCATIONS ARE APPROXIMATE

**REFERENCE(S)**

1. CONTAINS INFORMATION LICENSED UNDER THE OPEN GOVERNMENT LICENCE - ONTARIO  
 2. COORDINATE SYSTEM: NAD 1983 UTM ZONE 18N, PROJECTION: TRANSVERSE MERCATOR, DATUM: NORTH AMERICAN 1983



**CLIENT**

RF KANATA LP I.

**PROJECT**

EIS AND TCR ADDENDUM  
 405 HUNTMAR DRIVE, OTTAWA, ON

**TITLE**

**EXISTING TREE COVER**

**CONSULTANT**



YYYY-MM-DD	2023-09-11
DESIGNED	---
PREPARED	JEM
REVIEWED	GW
APPROVED	HM

PROJECT No.  
22572533

CONTROL  
0002

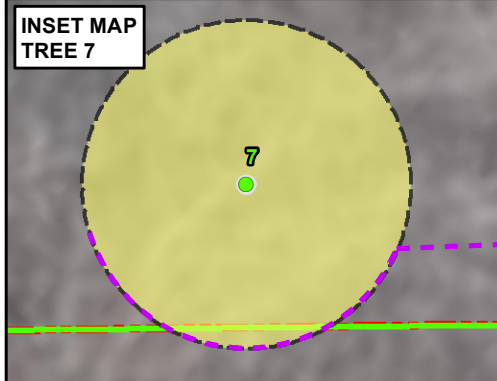
REV.  
0

MAP  
1

Path: S:\Clients\RoadReview\_Holdings\405\_Huntmar\_Drive\_Ottawa\980\_PROJ\22572533\0002\_EIS\_TCR\_Aerial\22572533-0002-HK-0002.mxd

IF THIS MEASUREMENT DOES NOT MATCH WHAT IS SHOWN, THE SHEET SIZE HAS BEEN MODIFIED FROM: 297mm

**INSET MAP**



**KEY MAP**



SCALE 1:50,000

**LEGEND**

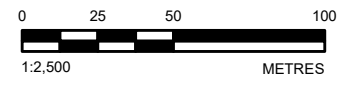
- TREE - ON-SITE OWNERSHIP
- TREE - PRIVATE OWNERSHIP
- TREE - SHARED OWNERSHIP
- TREE GROUPING
- CRITICAL ROOT ZONE (CRZ) TO BE RETAINED
- PROTECTIVE FENCING
- ROADWAY
- HEADWATER DRAINAGE FEATURE
- WATERBODY
- SITE
- 120 m STUDY AREA

**NOTE(S)**

1. ALL LOCATIONS ARE APPROXIMATE

**REFERENCE(S)**

1. CONTAINS INFORMATION LICENSED UNDER THE OPEN GOVERNMENT LICENCE - ONTARIO  
 2. COORDINATE SYSTEM: NAD 1983 UTM ZONE 18N, PROJECTION: TRANSVERSE MERCATOR, DATUM: NORTH AMERICAN 1983



CLIENT  
 RF KANATA LP I.

PROJECT  
 EIS AND TCR ADDENDUM  
 405 HUNTMAR DRIVE, OTTAWA, ON

TITLE  
**IMPACTS TO EXISTING TREE COVER**

CONSULTANT	YYYY-MM-DD	2023-09-18
	DESIGNED	---
	PREPARED	JEM
	REVIEWED	GW
	APPROVED	HM



Path: S:\Clients\Renewable\_Holdings\405\_Huntmar\_Drive\_Ottawa\980\_PROJ\22572533\0002\_EIS\_TCR\_Addendum\22572533-0002-HK-0000.mxd

IF THIS MEASUREMENT DOES NOT MATCH WHAT IS SHOWN, THE SHEET SIZE HAS BEEN MODIFIED FROM: 26mm