

Allison Hamlin

**ALLISON HAMLIN
MANAGER (A), DEVELOPMENT REVIEW WEST
PLANNING, REAL ESTATE & ECONOMIC DEVELOPMENT
DEPARTMENT, CITY OF OTTAWA**

APPROVED
By Allison Hamlin at 3:00 pm, Oct 13, 2023

LOCATIONS ARE APPROXIMATE. REFER TO GEDTECHNICAL REPORT (Geotechnical Investigation Proposed Warehouse Buildings Campeau Drive at Huntmar Drive Ottawa, Ontario, Maha K. Saleh, March 21, 2023) AND MAP (Tree Planting Setback Recommendations, March 21, 2023)

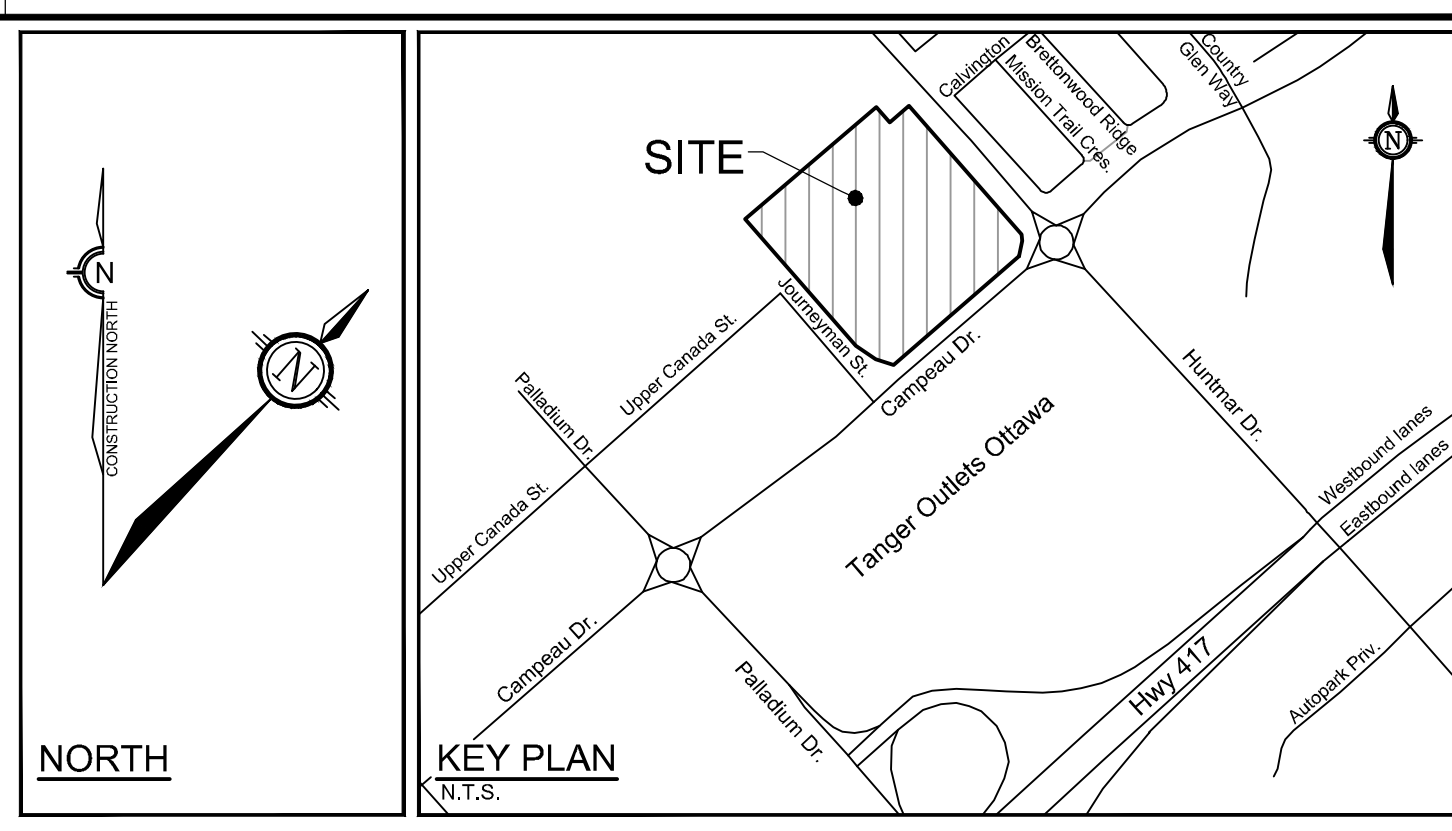
TREES VS PARKING SPACES

Building	Parking Provided	Trees in Parking Lot Area	Number of Parking Spaces per Tree
Building A	168	55	3
Building B	114	30	4

SOIL VOLUMES

Planting bed no.	Available Soil Area (sq. m)	Available Soil Volume (cu. m)	No. of trees proposed				Existing trees (Large) (35m)	Total No. of trees	Min. required soil volume: total (cu. m)
			Small (25m)	Medium (30m)	Large (35m)	Evergreen (30m)			
Planting bed 1	299.20	488.80	0	0	3	0	2	5	175.00
Planting bed 2	1398.98	1,962.96	1	1	4	9	7	22	719.00
Planting bed 3	855.92	1,343.88	1	7	0	9	0	17	565.00
Planting bed 4	495.41	749.12	0	9	0	3	0	12	360.00
Planting bed 5	686.13	989.33	7	0	0	3	0	10	265.00
Planting bed 6	921.06	1,381.59	7	0	0	5	0	12	325.00
Planting bed 7	1390.11	2,085.17	4	3	0	5	0	12	340.00
Planting bed 8	140.59	210.88	0	5	0	0	0	5	150.00
Planting bed 9	23.44	38.16	0	1	0	0	0	1	30.00
Planting bed 10	25.37	38.06	0	1	0	0	0	1	30.00
Planting bed 11	157.07	235.61	0	0	6	0	0	6	210.00
Planting bed 12	18.50	27.75	0	0	0	0	0	0	0.00
Planting bed 13	36.40	54.60	0	0	1	0	0	1	35.00
Planting bed 14	178.22	267.33	0	3	3	0	0	6	195.00
Planting bed 15	393.36	589.94	0	3	6	2	0	11	360.00
Planting bed 16	144.00	216.00	0	0	2	1	0	3	100.00
Planting bed 17	2153.06	3,229.08	0	0	12	7	0	19	630.00
Planting bed 18	376.69	565.04	3	0	0	3	0	6	165.00

Total Number of Deciduous Trees: 94
Total Number of Coniferous Trees: 47
Total Number of Trees: 141



LEGEND

- PROPERTY LIMIT
- [Pattern] PROPOSED CONCRETE
- [Pattern] PROPOSED PLANTING BED
- [Pattern] SOD
- [Pattern] SEED MIX A - SEE SEED MIX APPLICATION NOTE ON SHEET L6
- [Pattern] SEED MIX B - SEE SEED MIX APPLICATION NOTE ON SHEET L6
- [Pattern] SEED MIX C - SEE SEED MIX APPLICATION NOTE ON SHEETS L2-L5
- [Pattern] PROPOSED WET SHRUB MIX, REFER TO SHEET L6
- [Pattern] PROPOSED DRY SHRUB MIX, REFER TO SHEET L6
- [Symbol] PROPOSED DECIDUOUS TREE
- [Symbol] PROPOSED CONIFEROUS TREE
- [Symbol] EXISTING TREE TO REMAIN
- [Symbol] CRITICAL ROOT ZONE (CRZ) FOR TREES WITH DBH GREATER THAN 10cm
- [Symbol] EXISTING HEDGEROW TO REMAIN

GENERAL

- Read and interpret this drawing/drawing set in conjunction with all the contract details and specifications, including related civil, utility, structural, architectural, mechanical, electrical, environmental, geotechnical, and survey information.
- The Contractor is to determine the exact location, size, material, and elevation of all existing utilities prior to commencing construction. Protect and assume responsibility for all existing utilities regardless of being shown on the drawings.
- It is essential to use the plans and details in conjunction with the specifications and notes.
- Do not scale drawings. Work to dimensions only.
- Protect all existing and retained vegetation for the duration of construction according to the contract details and specifications.
- Reinstate all areas and items damaged or disturbed, beyond the Limit of Work, because of construction activities, including but not limited to construction staging areas, haul roads, stockpile areas, etc. to the satisfaction of the Consultant. Unless otherwise noted, Contractor is to reinstate all areas to pre-construction condition or better to the satisfaction of the Contract Administrator.

CITY DETAILS

- Related details from City of Ottawa Standard Tender Documents Volume No. 2 Standard Detail Drawings.
- SC4. Typical Concrete Sidewalk in Boulevard
 - SC5. Sidewalk Construction Joints

NOVATECH DETAILS

- Found on Sheet L7.
- D1. Standard Deciduous Tree Planting
 - D2. Standard Coniferous Tree Planting
 - D3. Shrub and Perennial Planting
 - D4. Tree Protection Fence
 - D5. Bike Layout
 - D6. Site furniture installation
 - D7. Reforestation
 - D8. Riverstone

PRODUCT INFORMATION

Install products as per manufacturer specifications. Shop drawings required.

SITE FURNITURE

- Fasten all site furnishing to surface with stainless steel anti-vandal anchors.
 - Accessible 400 Bench by Maglin
 - Product Number: MMP-0400-00034
 - Size: 72.75" Length
 - Frame colour: Gunmetal
 - Slats: Ipe
 - Options: Steel ends, end arms and centre arm 9" ht.
 - Mug Bike Rack by Maglin
 - Product Number: MBR-0500-00001
 - Feature: Direct Burial
 - Colour: Gunmetal Gloss Post

EXISTING VEGETATION

- No clearing of vegetation should occur between April 15th and August 15. Should clearing be necessary during this time, a survey is to be conducted by a biologist (approved by the Landscape Architect) to determine that no nesting is occurring within 5 days prior to clearing.
- Should any clearing be required before April 15th, a pre-clearing survey for active stick nests and cavity nests must also occur between April 1 and April 15, to identify and protect early-nesting owls and raptors.

TREE PLANTING IN SENSITIVE CLAY

- The landscape plans have been developed in accordance with the Geotechnical Report (Geotechnical Investigation Proposed Warehouse Buildings Campeau Drive at Huntmar Drive Ottawa, Ontario, Maha K. Saleh, March 21, 2023), which includes the letter/memo [Maha K. Saleh, March 21, 2023], and map [Tree Planting Setback Recommendations, March 21, 2023] that confirms the categories and locations of clay soils.
- The following City of Ottawa clay soils guideline applies: Guidelines for Tree Planting in Sensitive Marine Clay Soils (2017).
- The soil volumes provided are sufficient for a reasonable chance of tree survival. Unless otherwise noted, all new trees on City property meet the minimum soil volume requirements of the following, based on a depth of 1.5m below finished grade, and subtracting the volume of utility trenches.
 - a. Small tree (mature height up to 7.5m) - 25m³ minimum soil volume provided.
 - b. Medium tree (mature height 7.5-14m) - 30m³ minimum soil volume provided.

CALIPER TREES PLANT LIST

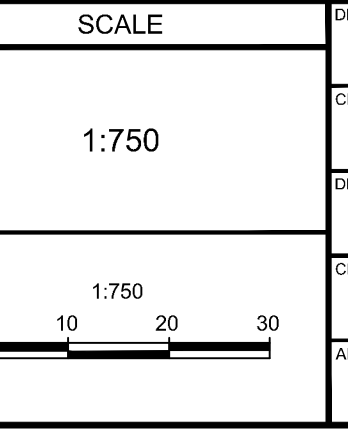
KEY	QTY	BOTANICAL NAME	COMMON NAME	SIZE	COND	SPACING
Deciduous Trees						
AR	4	<i>Acer rubrum</i>	Red Maple	50mm Cal	WB	As Shown
AFCM	6	<i>Acer x Freemanii 'Calcam'</i>	Celebration Maple	50mm Cal	WB	As Shown
AXD	0	<i>Amelanchier x grandiflora 'Ballarina'</i>	Ballerina Serviceberry	50mm Cal	WB	As Shown
BPM	3	<i>Betula papyrifera (multistem)</i>	Multistem Paper Birch	50mm Cal	WB	As Shown
CEL	5	<i>Celtis occidentalis</i>	Hackberry	50mm Cal	WB	As Shown
COU	8	<i>Celtis occidentalis 'Ultra'</i>	Ultra Hackberry	50mm Cal	WB	As Shown
GTI	9	<i>Gleditsia triacanthos var. inermis 'Impcoke'</i>	Imperial Honeylocust	50mm Cal	WB	As Shown
GTH	3	<i>Gleditsia triacanthos var. inermis 'Halka'</i>	Halka Honeylocust	50mm Cal	WB	As Shown
STS	5	<i>Gleditsia triacanthos var. inermis 'Shademaker'</i>	Shademaker Honeylocust	50mm Cal	WB	As Shown
GVE	5	<i>Gyrocarpius dioicus 'Espresso-JF-S'</i>	Espresso Kentucky Coffee Tree	50mm Cal	WB	As Shown
MPS	14	<i>Malus 'Pink Spires'</i>	Pink Spires Crabapple	50mm Cal	WB	As Shown
QM	3	<i>Quercus macrocarpa</i>	Burr Oak	50mm Cal	WB	As Shown
QR	1	<i>Quercus rubra</i>	Red Oak	50mm Cal	WB	As Shown
TC	1	<i>Tilia cordata 'Greenspire'</i>	Greenspire Linden	50mm Cal	WB	As Shown
UMB	6	<i>Ulmus americana 'Brandon'</i>	Brandon Elm	50mm Cal	WB	As Shown
UF	9	<i>Ulmus americana 'Frontier'</i>	Frontier Elm	50mm Cal	WB	As Shown
UAP	3	<i>Ulmus americana 'Princeton'</i>	Princeton Elm	50mm Cal	WB	As Shown
Coniferous Trees						
LL	5	<i>Larix laricina</i>	Tamarack	200cm Ht	WB	As Shown
PP	15	<i>Picea pungens</i>	Colorado Spruce	200cm Ht	WB	As Shown
PBB	6	<i>Picea pungens 'Baby Blue'</i>	Baby Blue Colorado Spruce	175cm Ht	WB	As Shown
TQ	21	<i>Thuja occidentalis</i>	Eastern White Cedar	200cm Ht	WB	As Shown

NOTE:
THE POSITION OF ALL POLE LINES, CONDUITS, WATERMANS, SEWERS AND OTHER UNDERGROUND AND OVERGROUND UTILITIES AND STRUCTURES IS NOT NECESSARILY SHOWN ON THE CONTRACT DRAWINGS, AND WHERE SHOWN, THE ACCURACY OF THE POSITION OF SUCH UTILITIES AND STRUCTURES IS NOT GUARANTEED. BEFORE STARTING WORK, DETERMINE THE EXACT LOCATION OF ALL SUCH UTILITIES AND STRUCTURES AND ASSUME ALL LIABILITY FOR DAMAGE TO THEM.

Owner:
Rosefellow
c/o Julian Nini
750 Metrol Laurin, Suite 210
Saint-Laurent, QBC H4M 2M4
Phone: (514) 532-1080

**NOT FOR
CONSTRUCTION**

No.	REVISION	DATE	BY
6.	REVISED PER CITY COMMENTS	OCT 12/23	RGJ
5.	REISSUED FOR SITE PLAN APPROVAL	SEP 15/23	RGJ
4.	ISSUED FOR SITE PLAN APPROVAL	AUG 4/23	RGJ
3.	REVISED PER CITY COMMENTS	MAY 31/23	RGJ
2.	REVISED PER CITY COMMENTS	MAR 30/23	RGJ
1.	ISSUED FOR CITY OF OTTAWA REVIEW	DEC 16/22	RGJ



FOR REVIEW ONLY

DESIGN	KW
CHECKED	RGJ
DRAWN	TB
CHECKED	KW
APPROVED	RGJ

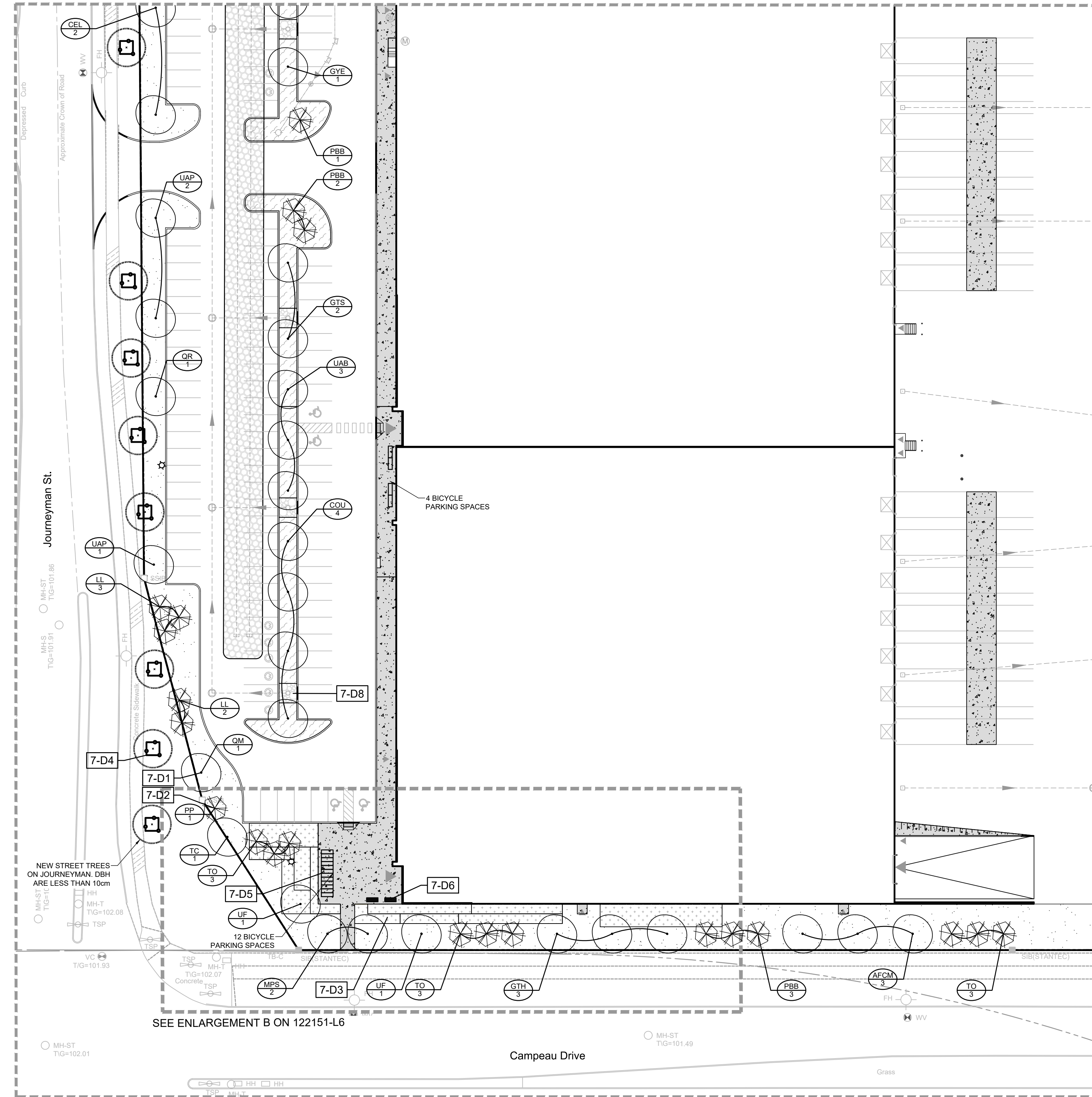
NOVATECH
Engineers, Planners & Landscape Architects
Suite 200, 240 Michael Cowpland Drive
Ottawa, Ontario, Canada K2M 1P6
Telephone (613) 254-9643
Facsimile (613) 254-9867
Website www.novatech-eng.com

LOCATION
CITY OF OTTAWA
405 HUNTMAR DRIVE - WAREHOUSE DEVELOPMENT

DRAWING NAME
OVERALL LANDSCAPE PLAN

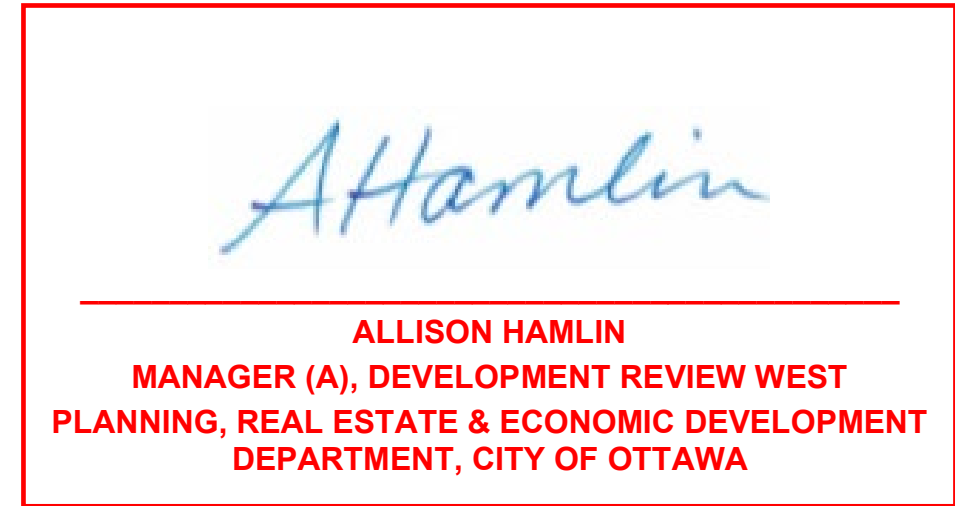
PROJECT NO. 122151
REV # 6
DRAWING NO. 122151-L1

SEE 122151-L4

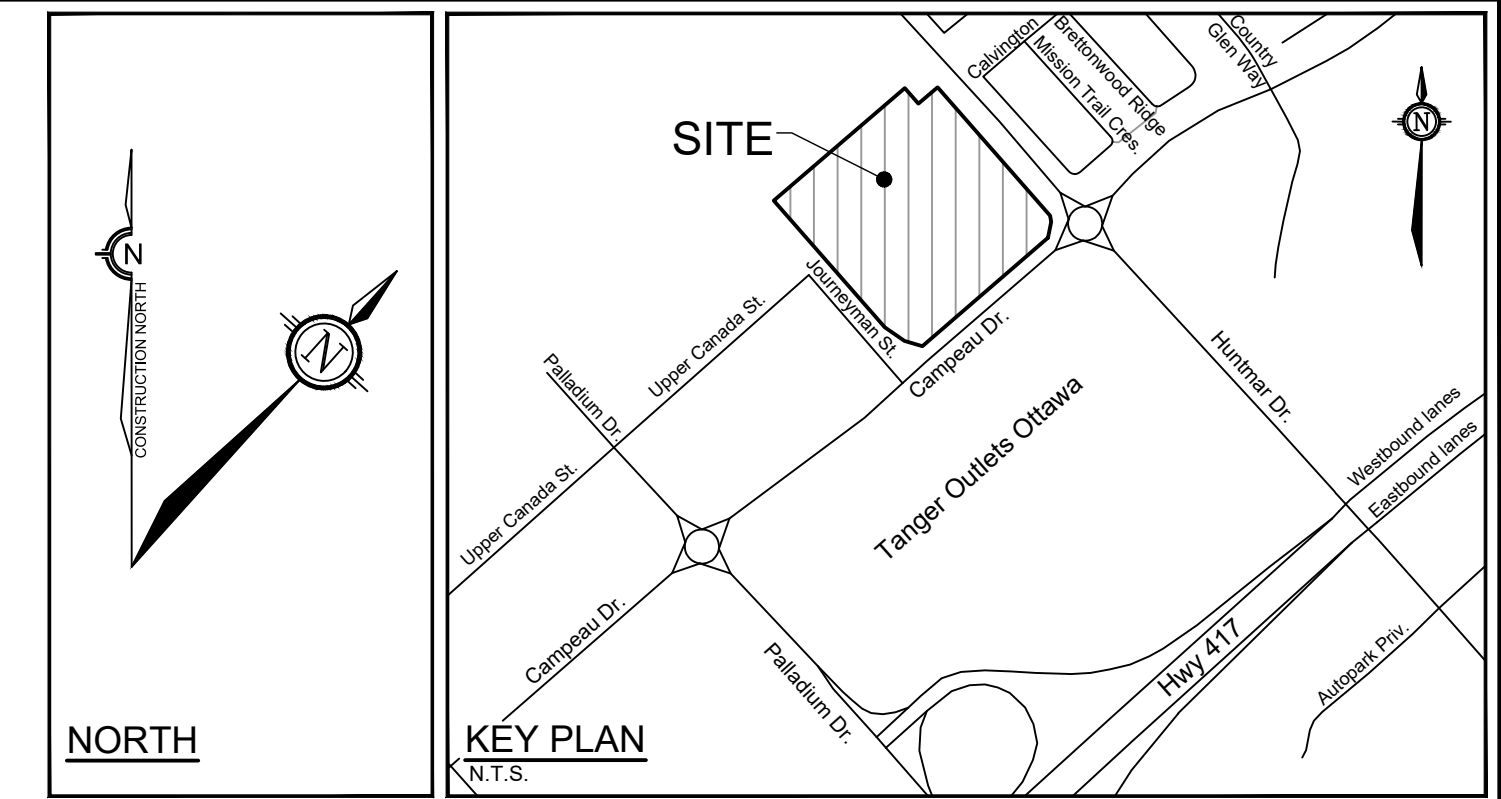


SEE ENLARGEMENT B ON 122151-L6

SEE 122151-L3



APPROVED
By Allison Hamlin at 3:00 pm, Oct 13, 2023



LEGEND - LANDSCAPE

- 3-D1 DETAIL SHEET # NOVATECH OR CITY DETAIL NUMBER SEE LIST FOR CODE
- PROPERTY LIMIT
- TREE PROTECTION FENCE
- PROPOSED CONCRETE
- RIVERSTONE
- PROPOSED PLANTING BED - SEE SHEET L6 FOR DETAILS
- SOD
- SEED MIX A - SEE SEED MIX APPLICATION NOTE ON SHEET L6
- SEED MIX B - SEE SEED MIX APPLICATION NOTE ON SHEET L6
- SEED MIX C - SEE SEED MIX APPLICATION NOTE ON SHEETS L2-L5
- PROPOSED WET SHRUB MIX, REFER TO SHEET L6
- PROPOSED DRY SHRUB MIX, REFER TO SHEET L6
- PROPOSED DECIDUOUS TREE
- PROPOSED CONIFEROUS TREE
- PROPOSED SHRUBS
- EXISTING TREE TO REMAIN
- CRITICAL ROOT ZONE (CRZ) FOR TREES WITH DBH GREATER THAN 10cm
- EXISTING HEDGEROW TO REMAIN
- BENCH
- SPECIES (SEE PLANT LIST)
- QUANTITY

TREE PROTECTION

- Implement the following protection measures for retained trees, both on site and on adjacent sites, prior to any work activity, including tree removal. Maintain tree protection fence in place and in good condition for the duration of site works:
- The Landscape Architect or Certified Arborist is to determine the location of the tree protection fencing and detail it on any associated plans for the site (e.g. tree conservation report, tree disclosure report, etc.).
 - Under the guidance of a Landscape Architect or Certified Arborist, erect a fence at the critical root zone (CRZ) of trees. Diameter at breast height (DBH) is the trunk diameter measured at 1.3m height on the tree trunk. The CRZ is calculated as DBH x 10. Refer to the Tree Protection Fence detail.
 - Refer to the Tree Protection Plan for fence location. City Forestry Staff are to approve both the plan and the installed fence prior to work commencement.
 - Do not place any material or equipment within 2m of the CRZ of any tree, including culhouses.
 - Do not attach any signs, notices, or posters to any tree.
 - Do not disturb, raise, or lower the existing grade within the CRZ without approval.
 - Only tunnel or bore when digging within the CRZ of a tree. Hand work only where required within the CRZ, absolutely no machinery permitted.
 - Do not damage the root system, trunk, or branches, or any tree.
 - Do not extend hard surface or significantly change landscaping.
 - Ensure that exhaust fumes from all equipment are directed away from any tree canopy.
 - When trees marked for removal overlap with the CRZ of trees marked for preservation: cut roots at the edge of the CRZ and grind down stumps after tree removals, do not pull out stumps. Ensure there is not root pulling or disturbance of the ground within the CRZ.
 - Prior to work taking place, notify and consult the Landscape Architect and City Forestry Staff if roots must be cut. Roots 20mm or larger should be cut at right angles with clean, sharp horticultural tools without tearing, crushing, or pulling. Refer to City of Ottawa Specification S.P. F-8011 Tree Protection, Excavation of Root Zone.
 - If damaged or objectionable branches are observed, consult the Landscape Architect before any work is conducted. Do not prune leaders. Do not prune more than 1/4 of crown. Set up a water and fertilizing program, if trees are being affected by site works, to the satisfaction of the Landscape Architect.
 - The Landscape Architect is to prescribe mitigation measures if the protected fenced area must be reduced to facilitate construction. Measures may include the placement of plywood, wood chips, or steel plating over the roots for protection. City Forestry Staff are to approve said measures prior to fence movement.
 - City of Ottawa By-law: Protects municipal trees and municipal natural areas in the City of Ottawa and trees on private property in the urban area of the City of Ottawa (2020-340).

PLANTING

- Plant material to be No. 1 Grade and is to comply with Canadian Standards for Nursery Stock (latest edition) published by the Canadian Nursery Landscape Association.
- Use structurally sound plant material with strong fibrous root system free of disease, defects, and injuries. Use trees with straight trunks, well and characteristically branched for species. Obtain approval from consultant of plant material at source prior to digging. All trees and shrubs to be container grown, potted, W/B or B/B, as indicated on Plant List. Bare root plants are only acceptable for certain species and as approved by the Landscape Architect.
- Plant material substitutions are not permitted without the written approval from the Consultant, with 48 hours notice, prior to shipping plant material.
- Plant locations are schematic, approximate only. Contractor is to stake out locations on site for approval by the Landscape Architect prior to installation.
- The illustrated number of plants shown in the Planting Plan supersedes the estimated number in the Plant List. Contractor to report any discrepancies to the Landscape Architect prior to installation. Contractor will assume full responsibility if the Landscape Architect is not notified.
- Ensure trees are thoroughly watered following planting. Monitor material and ensure adequate moisture until acceptance.
- In heavy clay or poorly drained soils, set root ball with root collar 75-100mm higher than finished grade.
- Approved topsoil depths are as follows:
 - Plant Beds - 450mm continuous depth. Applies to shrubs, perennials, vines, and groundcovers.
 - Sod/Seed Areas - 100mm depth.
- Sod to be No. 1 Kentucky Bluegrass Sod grown from minimum mixture of 3 Kentucky Bluegrass cultivars. Quality and source are to comply with Canadian Standards for Nursery Stock, Section 17, (latest edition) published by the Canadian Nursery Landscape Nursery Landscape Association.
- Apply the following mineral fertilizer unless soil tests show other requirements:
 - Plant Beds - (8-32-16), i.e. 8% Nitrogen, 32% Phosphorus, 16% Potash per manufacturer specifications.
 - Sod Areas - (8-32-16), i.e. 8% Nitrogen, 32% Phosphorus, 16% Potash at a rate of 350kg/ha.
- Where applicable, for any plant areas with a mix of species/cultivars notes, Contractor is to cluster like plants in groups of 3-5 and evenly distribute these in the noted area.

CITY DETAILS

Related details from City of Ottawa Standard Tender Documents Volume No. 2 Standard Detail Drawings.

- SC4 Typical Concrete Sidewalk in Boulevard
- SC5 Sidewalk Construction Joints

NOVATECH DETAILS

Found on Sheet L7.

- D1 Standard Deciduous Tree Planting
- D2 Standard Coniferous Tree Planting
- D3 Shrub and Perennial Planting
- D4 Tree Protection Fence
- D5 Bike Layout
- D6 Site furniture installation
- D7 Reforestation
- D8 Riverstone

SEED MIX AND APPLICATION

For areas steeper than 3:1, Contractor to apply erosion control blanket. Erosion control blanket to be machine woven mats made from natural wood, coir or cotton fiber, or combination depending on manufacturer, with stitching between two photo-degradable natural organic fiber nettings. Submit products for approval by Consultant. OPSS 804 applies except as may be amended and extended herein.

In addition to the specified seed mixes, all applications are to include a nurse crop as noted.

- NURSE CROP
 - 40% Oats (Avena sativa)
 - 45% Barley (Hordeum vulgare)
 - 15% Canada Wild Rye (Elymus canadensis)
- Seeding Rate: 15kg/hectare

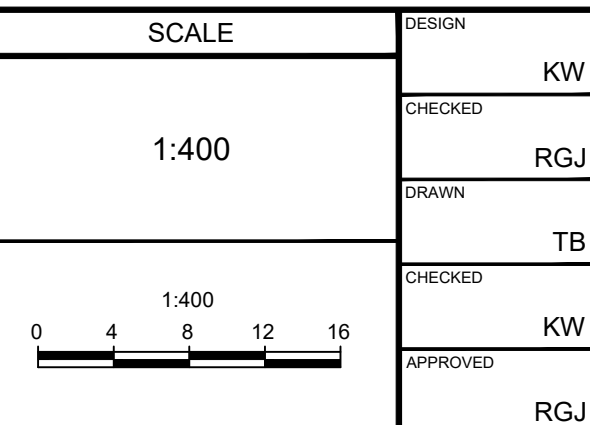
- SEED MIX C
 - CUSTOM NATIVE PARKING ISLAND SEED MIX BY DLF
 - Seeding Rate: 25kg/hectare

NOTE:
THE POSITION OF ALL POLE LINES, CONDUITS, WATERMANS, SEWERS AND OTHER UNDERGROUND AND OVERGROUND UTILITIES AND STRUCTURES IS NOT NECESSARILY SHOWN ON THE CONTRACT DRAWINGS, AND WHERE SHOWN, THE ACCURACY OF THE POSITION OF SUCH UTILITIES AND STRUCTURES IS NOT GUARANTEED. BEFORE STARTING WORK, DETERMINE THE EXACT LOCATION OF ALL SUCH UTILITIES AND STRUCTURES AND ASSUME ALL LIABILITY FOR DAMAGE TO THEM.

Owner:
Rosefellow
c/o Julian Nini
750 Mariek Laurin, Suite 210
Saint-Laurent, QC H4M 2M4
Phone: (514) 532-1080

NOT FOR CONSTRUCTION

No.	REVISION	DATE	BY
6.	REVISED PER CITY COMMENTS	OCT 12/23	RGJ
5.	REISSUED FOR SITE PLAN APPROVAL	SEP 15/23	RGJ
4.	ISSUED FOR SITE PLAN APPROVAL	AUG 4/23	RGJ
3.	REVISED PER CITY COMMENTS	MAY 31/23	RGJ
2.	REVISED PER CITY COMMENTS	MAR 30/23	RGJ
1.	ISSUED FOR CITY OF OTTAWA REVIEW	DEC 16/22	RGJ



DESIGN	KW
CHECKED	RGJ
DRAWN	TB
CHECKED	KW
APPROVED	RGJ



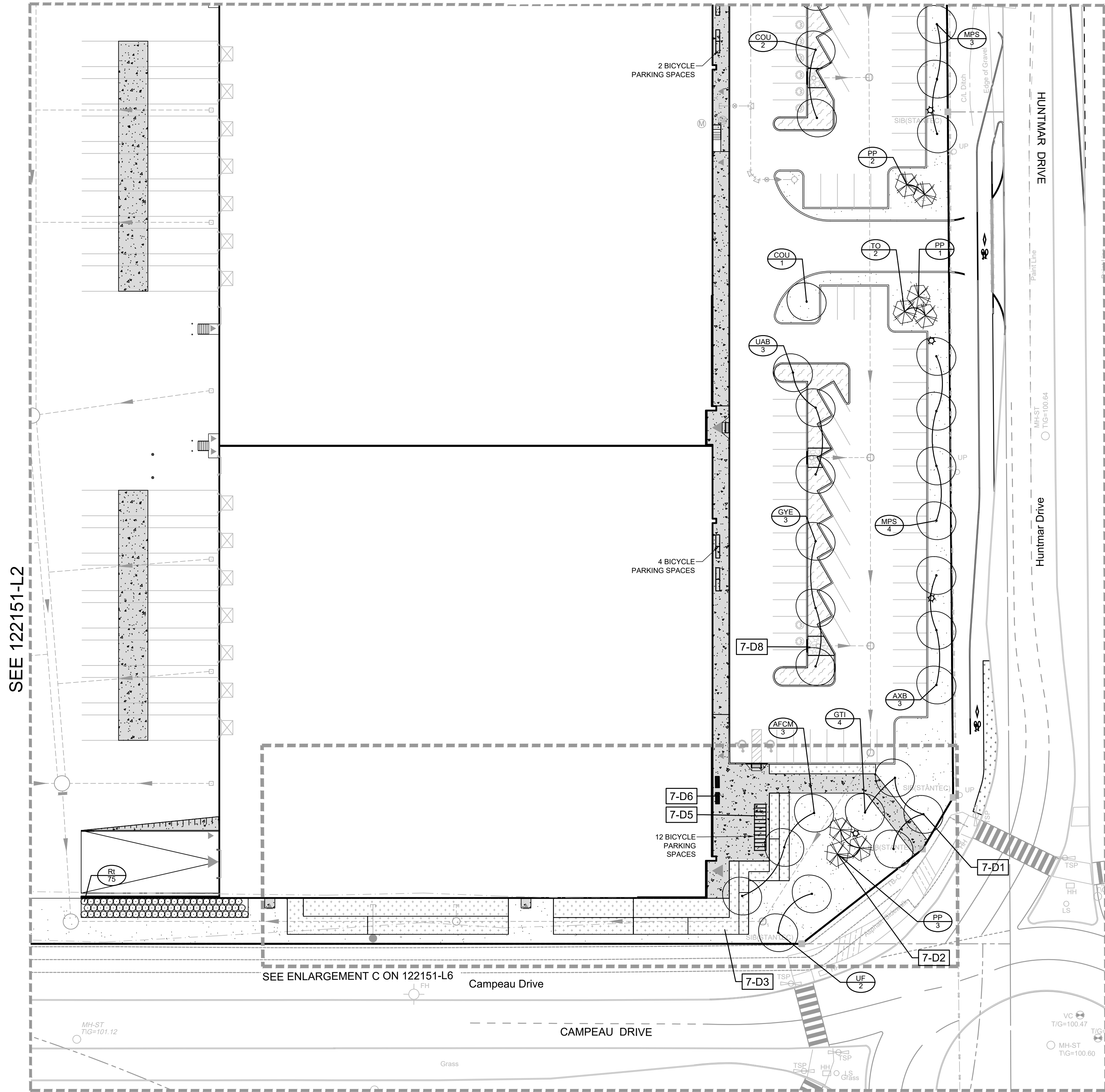
NOVATECH
Engineers, Planners & Landscape Architects
Suite 200, 240 Michael Cowpland Drive
Ottawa, Ontario, Canada K2M 1P6
Telephone: (613) 254-9643
Facsimile: (613) 254-5867
Website: www.novatech-eng.com

LOCATION
CITY OF OTTAWA
405 HUNTMAR DRIVE - WAREHOUSE DEVELOPMENT

DRAWING NAME
LANDSCAPE PLAN

PROJECT No. 122151
REV 122151-L2
REV # 6
DRAWING No. 122151-L2

SEE 122151-L5



SEE 122151-L2

SEE ENLARGEMENT C ON 122151-L6

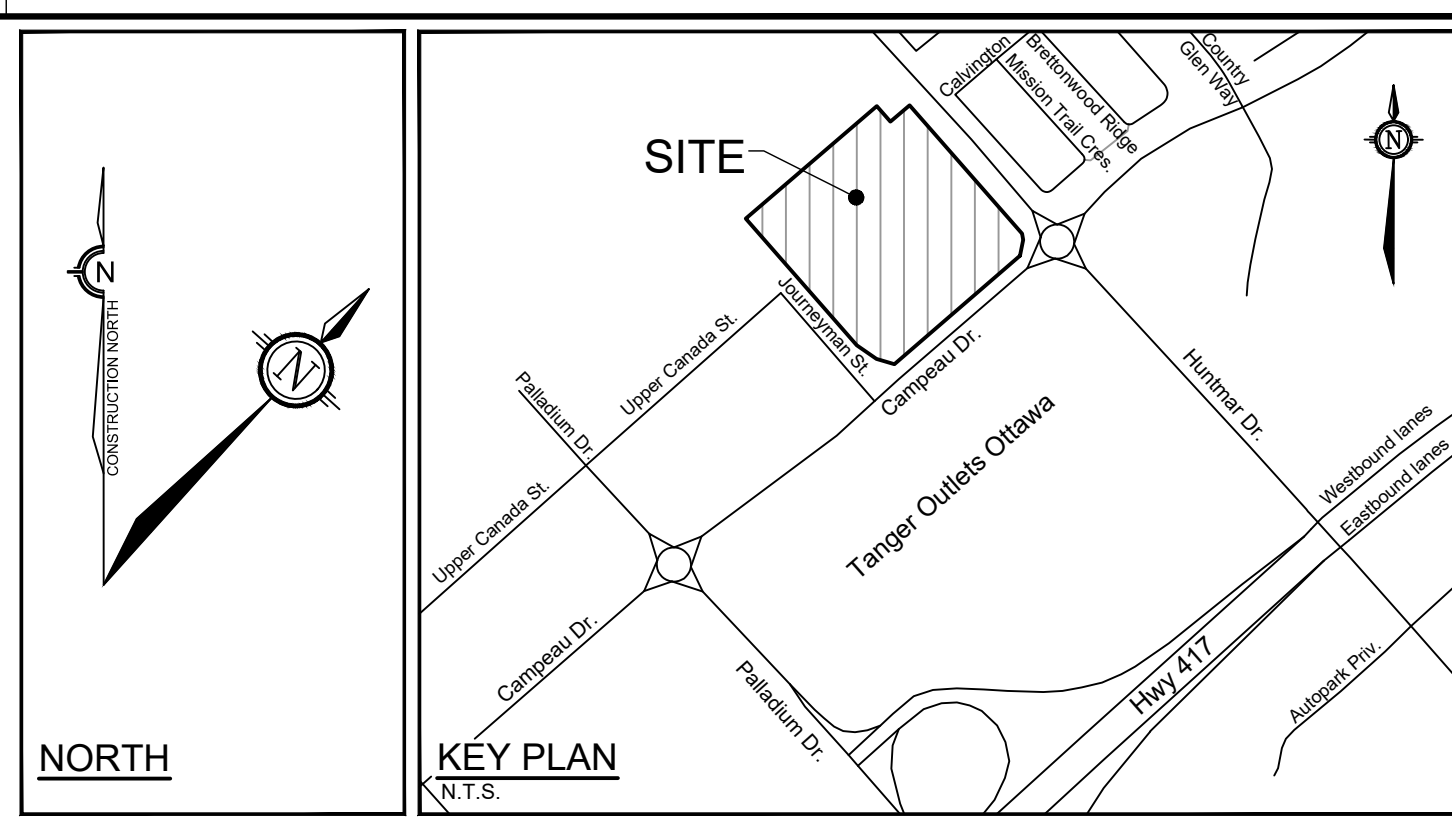
CAMPEAU DRIVE

HUNTMAR DRIVE

Huntmar Drive



APPROVED By Allison Hamlin at 3:00 pm, Oct 13, 2023



LEGEND - LANDSCAPE

- Legend items including: 3-D1 (Detail Sheet #), Property Limit, Tree Protection Fence, Proposed Concrete, Riverstone, Proposed Planting Bed, Sod, Seed Mix A, B, C, Proposed Wet Shrub Mix, Proposed Dry Shrub Mix, Proposed Deciduous Tree, Proposed Coniferous Tree, Proposed Shrubs, Existing Tree to Remain, Critical Root Zone (CRZ), Existing Hedgerow to Remain, Bench, Species, Quantity.

TREE PROTECTION

- Tree Protection instructions: Implement the following protection measures for retained trees, both on site and on adjacent sites, prior to any work activity, including tree removal. Maintain tree protection fence in place and in good condition for the duration of site works.

PLANTING

- Planting instructions: Plant material to be No. 1 Grade and is to comply with Canadian Standards for Nursery Stock (latest edition) published by the Canadian Nursery Landscape Association.

CITY DETAILS

Related details from City of Ottawa Standard Tender Documents Volume No. 2 Standard Detail Drawings.

NOVATECH DETAILS

- Novatech details: D1. Standard Deciduous Tree Planting, D2. Standard Coniferous Tree Planting, D3. Shrub and Perennial Planting, D4. Tree Protection Fence, D5. Bike Layout, D6. Site furniture installation, D7. Reforestation, D8. Riverstone.

PARKING LOT - PLANT LIST

Table with columns: Deciduous Shrubs, Species (Rt, 75, Rhus typhina), Staghorn Sumac, 60cm Ht, PT, 100cm O.C.

SEED MIX AND APPLICATION

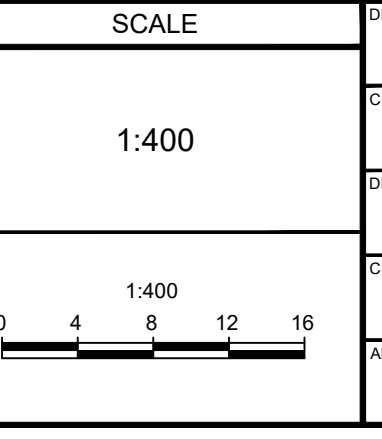
For areas steeper than 3:1, Contractor to apply erosion control blanket. Erosion control blanket to be machine woven mats made from natural wood, coco or cotton fiber, or combination depending on manufacturer, with stitching between two photo-degradable natural organic fiber nettings. Submit products for approval by Consultant. OPSS 804 applies except as may be amended and extended herein.

NOTE: THE POSITION OF ALL POLE LINES, CONDUITS, WATERMANS, SEWERS AND OTHER UNDERGROUND AND OVERGROUND UTILITIES AND STRUCTURES IS NOT NECESSARILY SHOWN ON THE CONTRACT DRAWINGS, AND WHERE SHOWN, THE ACCURACY OF THE POSITION OF SUCH UTILITIES AND STRUCTURES IS NOT GUARANTEED. BEFORE STARTING WORK, DETERMINE THE EXACT LOCATION OF ALL SUCH UTILITIES AND STRUCTURES AND ASSUME ALL LIABILITY FOR DAMAGE TO THEM.

Owner: Rosefellow c/o Julian Nihi 750 Marie-Laurin, Suite 210 Saint-Laurent, QC H4M 2M4 Phone: (514) 532-1080

NOT FOR CONSTRUCTION

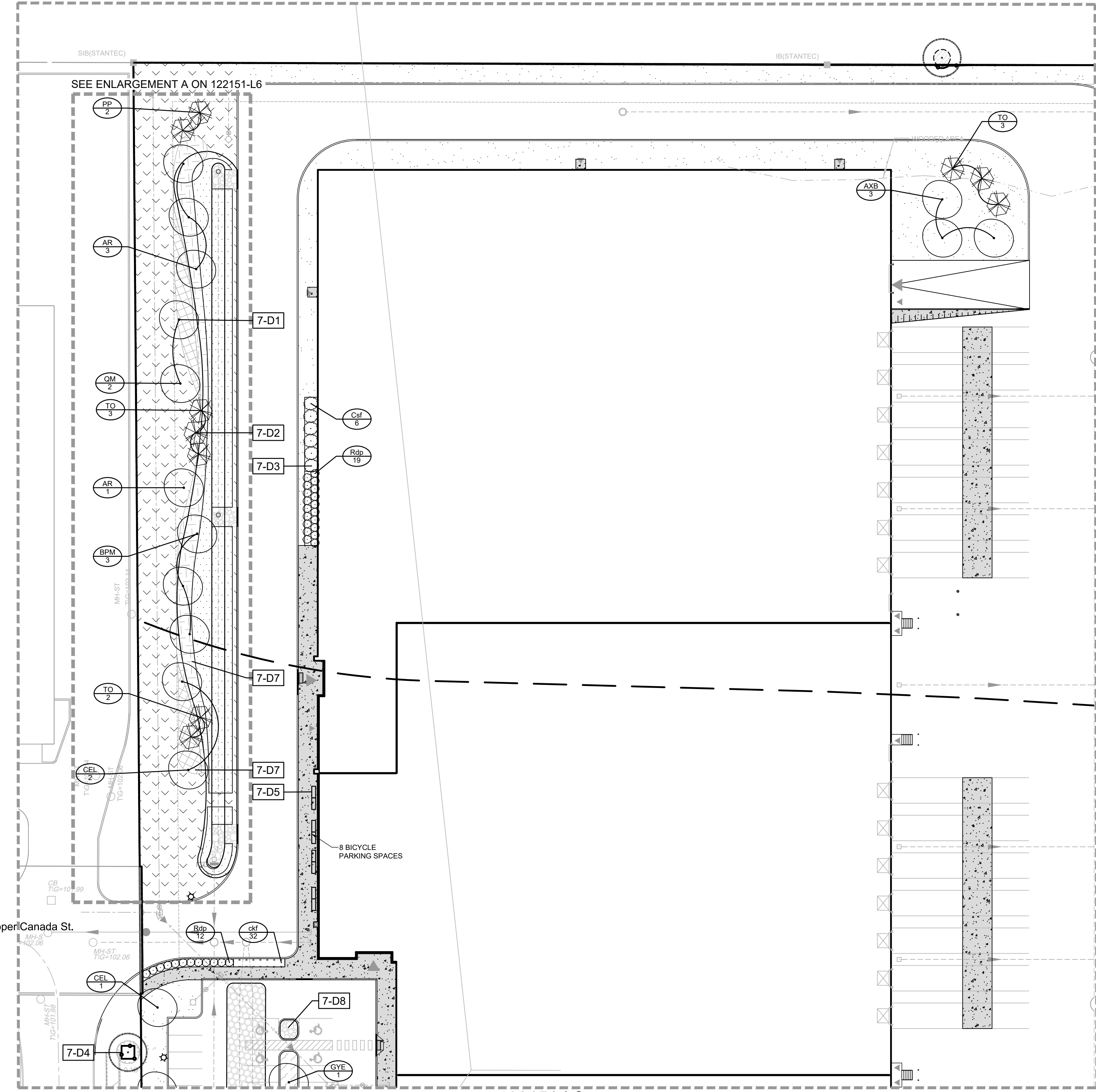
Revision table with columns: No., REVISION, DATE, BY. Includes entries for 'REVISED PER CITY COMMENTS' and 'ISSUED FOR CITY OF OTTAWA REVIEW'.



Approval table with columns: DESIGN, CHECKED, DRAWN, CHECKED, APPROVED. Includes names like KW, RGJ, TB, and a date stamp 'OCT 14 2023'.

NOVATECH logo and contact information: Engineers, Planners & Landscape Architects, Suite 200, 240 Michael Cowland Drive, Ottawa, Ontario, Canada K2M 1P6.

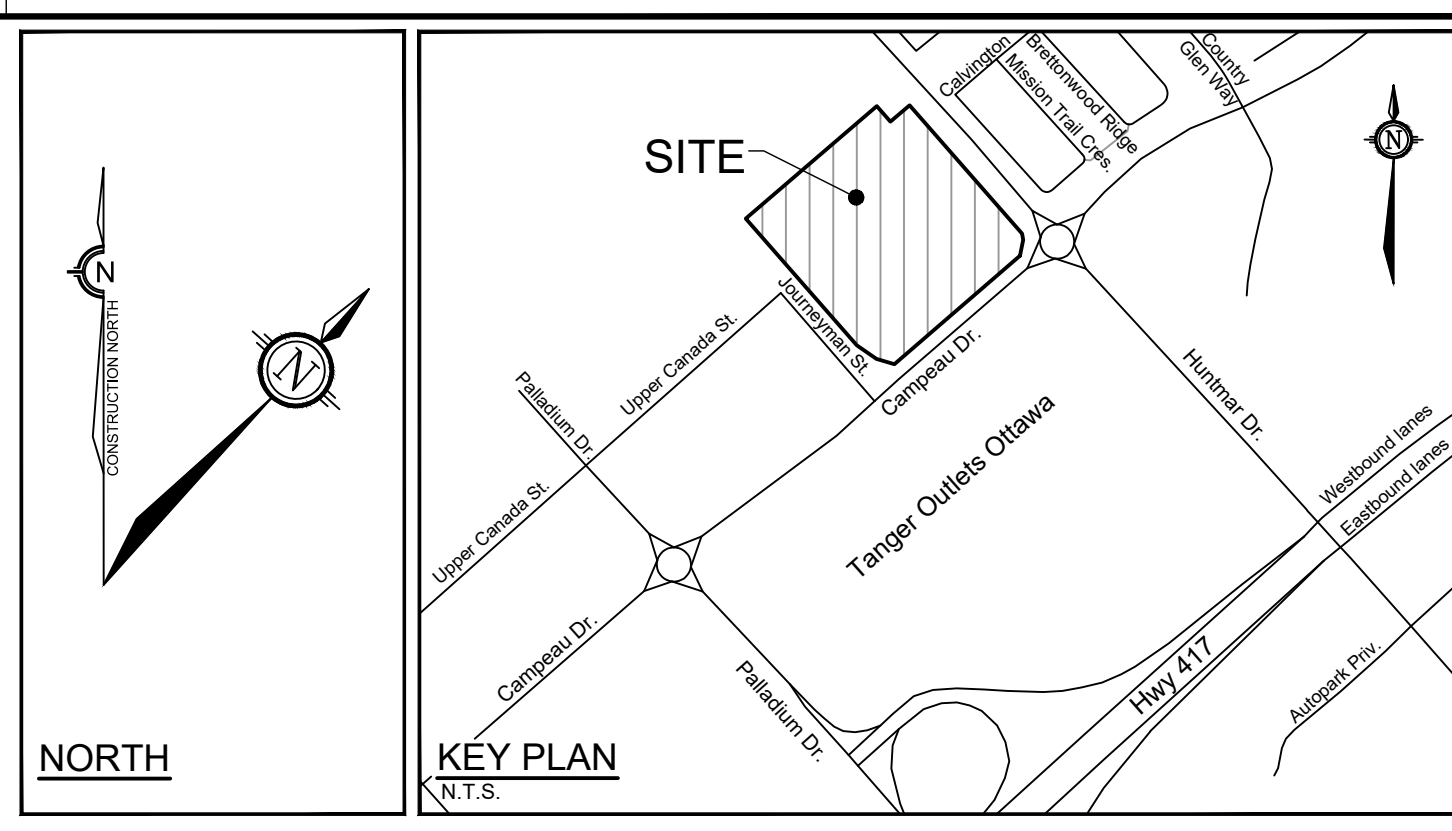
LOCATION: CITY OF OTTAWA, 405 HUNTMAR DRIVE - WAREHOUSE DEVELOPMENT. DRAWING NAME: LANDSCAPE PLAN. PROJECT No.: 122151. REV # 6. DRAWING No.: 122151-L3.



Allison Hamlin

ALLISON HAMLIN
MANAGER (A), DEVELOPMENT REVIEW WEST
PLANNING, REAL ESTATE & ECONOMIC DEVELOPMENT
DEPARTMENT, CITY OF OTTAWA

APPROVED
 By Allison Hamlin at 3:00 pm, Oct 13, 2023



- LEGEND**
- 3-D1 DETAIL SHEET # NOVATECH OR CITY DETAIL NUMBER SEE LIST FOR CODE
 - PROPERTY LIMIT
 - TREE PROTECTION FENCE
 - PROPOSED CONCRETE
 - RIVERSTONE
 - PROPOSED PLANTING BED - SEE SHEET L6 FOR DETAILS
 - SOD
 - SEED MIX A - SEE SEED MIX APPLICATION NOTE ON SHEET L6
 - SEED MIX B - SEE SEED MIX APPLICATION NOTE ON SHEET L6
 - SEED MIX C - SEE SEED MIX APPLICATION NOTE ON SHEETS L2-L5
 - PROPOSED WET SHRUB MIX, REFER TO SHEET L6
 - PROPOSED DRY SHRUB MIX, REFER TO SHEET L6
 - PROPOSED DECIDUOUS TREE
 - PROPOSED CONIFEROUS TREE
 - PROPOSED SHRUBS
 - EXISTING TREE TO REMAIN
 - CRITICAL ROOT ZONE (CRZ) FOR TREES WITH DBH GREATER THAN 10cm
 - EXISTING HEDGEROW TO REMAIN
 - BENCH
 - SPECIES (SEE PLANT LIST)
 - QUANTITY
- TREE PROTECTION**
- The Landscape Architect or Certified Arborist is to determine the location of the tree protection fencing and detail it on any associated plans for the site (e.g. tree conservation report, tree disclosure report, etc.).
 - Under the guidance of a Landscape Architect or Certified Arborist, erect a fence at the critical root zone (CRZ) of trees. Diameter at breast height (DBH) is the trunk diameter measured at 1.3m height on the tree trunk. The CRZ is calculated as DBH x 10. Refer to the Tree Protection Fence detail.
 - Refer to the Tree Protection Plan for fence location. City Forestry Staff are to approve both the plan and the installed fence prior to work commencement.
 - Do not place any material or equipment within 2m of the CRZ of any tree, including culhousers.
 - Do not attach any signs, notices, or posters to any tree.
 - Do not disturb, raise, or lower the existing grade within the CRZ without approval.
 - Only tunnel or bore when digging within the CRZ of a tree. Hand work only where required within the CRZ, absolutely no machinery permitted.
 - Do not damage the root system, trunk, or branches, or any tree.
 - Do not extend hard surface or significantly change landscaping.
 - Ensure that exhaust fumes from all equipment are directed away from any tree canopy.
 - When trees marked for removal overlap with the CRZ of trees marked for preservation: cut roots at the edge of the CRZ and grind down stumps after tree removals, do not pull out stumps. Ensure there is no root pulling or disturbance of the ground within the CRZ.
 - Prior to work taking place, notify and consult the Landscape Architect and City Forestry Staff if roots must be cut. Roots 20mm or larger should be cut at right angles with clean, sharp horticultural tools without tearing, crushing, or pulling. Refer to City of Ottawa Specification S.P. F-8011 Tree Protection, Excavation of Root Zone.
 - If damaged or objectionable branches are observed, consult the Landscape Architect, before any work is conducted. Do not prune leaders. Do not prune more than 1/4 of crown.
 - Set up a water and fertilizing program, if trees are being affected by site works, to the satisfaction of the Landscape Architect.
 - The Landscape Architect is to prescribe mitigation measures if the protected fenced area must be reduced to facilitate construction. Measures may include the placement of plywood, wood chips, or steel plating over the roots for protection. City Forestry Staff are to approve said measures prior to fence movement.
 - City of Ottawa By-law: Protects municipal trees and municipal natural areas in the City of Ottawa and trees on private property in the urban area of the City of Ottawa (2020-340).
- PLANTING**
- Plant material to be No. 1 Grade and is to comply with Canadian Standards for Nursery Stock (latest edition) published by the Canadian Nursery Landscape Association. Use structurally sound plant material with strong fibrous root system free of disease, defects, and injuries. Use trees with straight trunks, well and characteristically branched for species. Obtain approval from consultant of plant material at source prior to digging. All trees and shrubs to be container grown, potted, W/B or B/B, as indicated on Plant List. Bare root plants are only acceptable for certain species and as approved by the Landscape Architect.
 - Plant material substitutions are not permitted without the written approval from the Consultant, with 48 hours notice, prior to shipping plant material.
 - Plant locations are schematic / approximate only. Contractor is to stake out locations on site for approval by the Landscape Architect prior to installation.
 - The illustrated number of plants shown in the Planting Plan supersedes the estimated number in the Plant List. Contractor to report any discrepancies to the Landscape Architect prior to installation. Contractor will assume full responsibility if the Landscape Architect is not notified.
 - Ensure trees are thoroughly watered following planting. Monitor material and ensure adequate moisture until acceptance.
 - In heavy clay or poorly drained soils, set root ball with root collar 75-100mm higher than finished grade.
 - Approved topsoil depths are as follows:
 - Plant Beds - 450mm continuous depth. Applies to shrubs, perennials, vines, and groundcovers.
 - Sod/Seed Areas - 100mm depth.
 - Sod to be No. 1 Kentucky Bluegrass Sod grown from minimum mixture of 3 Kentucky Bluegrass cultivars. Quality and source are to comply with Canadian Standards for Nursery Stock, Section 17, (latest edition) published by the Canadian Nursery Landscape Nursery Landscape Association.
 - Apply the following mineral fertilizer unless soil tests show other requirements:
 - Plant Beds - (8-32-16), i.e. 8% Nitrogen, 32% Phosphorus, 16% Potash per manufacturer specifications.
 - Sod Areas - (8-32-16), i.e. 8% Nitrogen, 32% Phosphorus, 16% Potash at a rate of 350kg/ha.
 - Where applicable, for any plant areas with a mix of species/cultivars notes, Contractor is to cluster like plants in groups of 3-5 and evenly distribute them in the noted area.

CITY DETAILS

Related details from City of Ottawa Standard Tender Documents Volume No. 2 Standard Detail Drawings.

SC4. Typical Concrete Sidewalk in Boulevard
 SC5. Sidewalk Construction Joints

NOVATECH DETAILS

Found on Sheet L7.

D1. Standard Deciduous Tree Planting
 D2. Standard Coniferous Tree Planting
 D3. Shrub and Perennial Planting
 D4. Tree Protection Fence
 D5. Bike Layout
 D6. Site furniture installation
 D7. Re-forestation
 D8. Riverstone

PARKING LOT - PLANT LIST

Deciduous Shrubs		Ornamental Grasses	
Csf	6 <i>Cornus sericea 'Flaviramea'</i>	Yellow Twig Dogwood	60cm Ht PT 200cm O.C.
Rdp	31 <i>Rosa 'Dwarf Pavement'</i>	Dwarf Pavement Rose	60cm Ht PT 120cm O.C.
ckf	32 <i>Calamagrostis acutiflora 'Karl Foerster'</i>	Karl Foerster Feather Reed Grass	1g PT 60cm O.C.

SEED MIX AND APPLICATION

For areas steeper than 3:1, Contractor to apply erosion control blanket. Erosion control blanket to be machine woven mats made from natural wood, coco or cotton fiber, or combination depending on manufacturer, with stitching between two photo-degradable natural organic fiber nettings. Submit products for approval by Consultant. OPSS 804 applies except as may be amended and extended here.

In addition to the specified seed mixes, all applications are to include a nurse crop as noted.

NURSE CROP
 40% Oats (*Avena sativa*)
 45% Barley (*Hordeum vulgare*)
 15% Canada Wild Rye (*Elymus canadensis*)
 Seeding Rate: 15kg/hectare

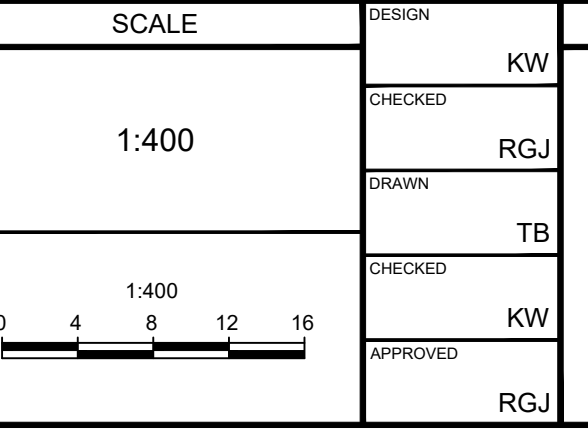
SEED MIX C
 CUSTOM NATIVE PARKING ISLAND SEED MIX BY DLF
 Seeding Rate: 25kg/hectare

NOTE:
 THE POSITION OF ALL POLE LINES, CONDUITS, WATERMANS, SEWERS AND OTHER UNDERGROUND AND OVERGROUND UTILITIES AND STRUCTURES IS NOT NECESSARILY SHOWN ON THE CONTRACT DRAWINGS, AND WHERE SHOWN, THE ACCURACY OF THE POSITION OF SUCH UTILITIES AND STRUCTURES IS NOT GUARANTEED. BEFORE STARTING WORK, DETERMINE THE EXACT LOCATION OF ALL SUCH UTILITIES AND STRUCTURES AND ASSUME ALL LIABILITY FOR DAMAGE TO THEM.

Owner:
 Rosefellow
 c/o Julian Nini
 750 Marie-Laurin, Suite 210
 Saint-Laurent, QC H4M 2M4
 Phone: (514) 532-1080

NOT FOR CONSTRUCTION

No.	REVISION	DATE	BY
6.	REVISED PER CITY COMMENTS	OCT 12/23	RGJ
5.	REISSUED FOR SITE PLAN APPROVAL	SEP 15/23	RGJ
4.	ISSUED FOR SITE PLAN APPROVAL	AUG 4/23	RGJ
3.	REVISED PER CITY COMMENTS	MAY 31/23	RGJ
2.	REVISED PER CITY COMMENTS	MAR 30/23	RGJ
1.	ISSUED FOR CITY OF OTTAWA REVIEW	DEC 16/22	RGJ



DESIGN	FOR REVIEW ONLY
KW	
CHECKED	RGJ
DRAWN	TB
CHECKED	KW
APPROVED	RGJ

NOVATECH
 Engineers, Planners & Landscape Architects
 Suite 200, 240 Michael Cowpland Drive
 Ottawa, Ontario, Canada K2M 1P6

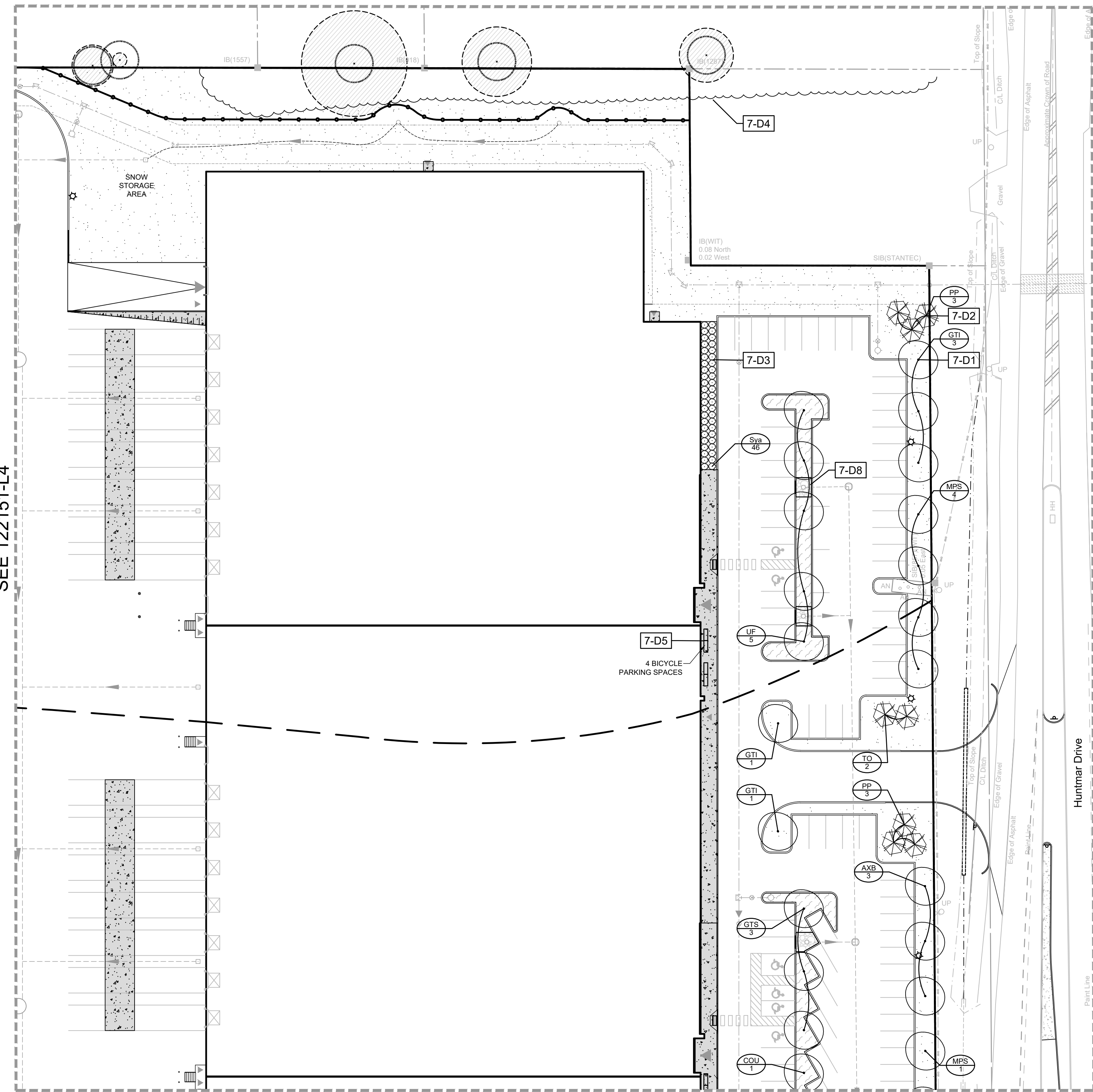
Telephone (613) 254-9643
 Facsimile (613) 254-5867
 Website www.novatech-eng.com

LOCATION
 CITY OF OTTAWA
 405 HUNTMAR DRIVE - WAREHOUSE DEVELOPMENT

DRAWING NAME
LANDSCAPE PLAN

PROJECT No. 122151
 REV # 6
 DRAWING No. 122151-L4

#18906



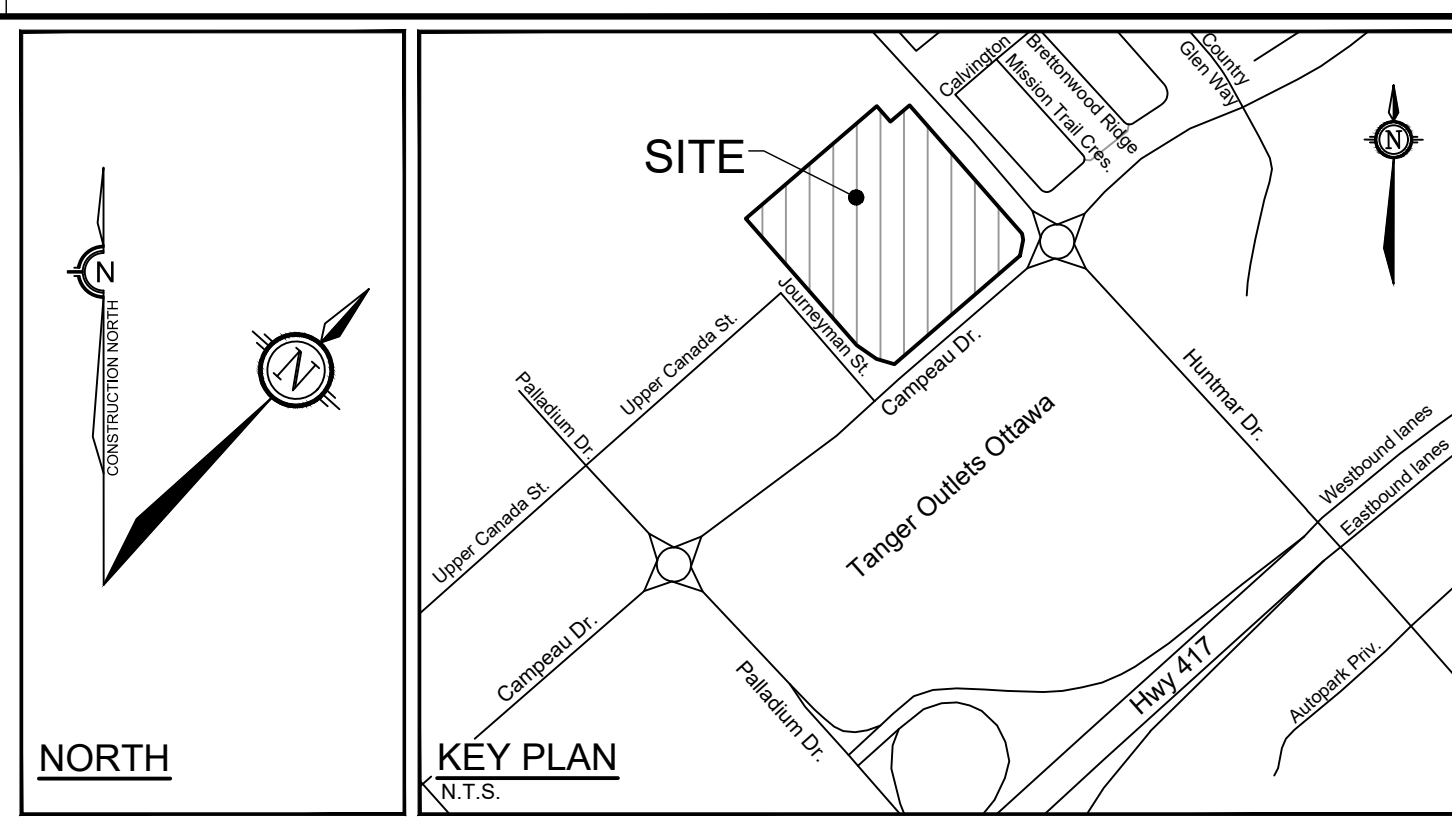
SEE 122151-L4

SEE 122151-L3

Allan Hamlin

ALLISON HAMLIN
MANAGER (A), DEVELOPMENT REVIEW WEST
PLANNING, REAL ESTATE & ECONOMIC DEVELOPMENT
DEPARTMENT, CITY OF OTTAWA

APPROVED
 By Allison Hamlin at 3:00 pm, Oct 13, 2023



- LEGEND - LANDSCAPE**
- 3-D1** DETAIL SHEET # NOVATECH OR CITY DETAIL NUMBER SEE LIST FOR CODE
 - PROPERTY LIMIT**
 - TREE PROTECTION FENCE**
 - PROPOSED CONCRETE**
 - RIVERSTONE**
 - PROPOSED PLANTING BED - SEE SHEET L6 FOR DETAILS**
 - SOD**
 - SEED MIX A - SEE SEED MIX APPLICATION NOTE ON SHEET L6**
 - SEED MIX B - SEE SEED MIX APPLICATION NOTE ON SHEET L6**
 - SEED MIX C - SEE SEED MIX APPLICATION NOTE ON SHEETS L2-L5**
 - PROPOSED WET SHRUB MIX, REFER TO SHEET L6**
 - PROPOSED DRY SHRUB MIX, REFER TO SHEET L6**
 - PROPOSED DECIDUOUS TREE**
 - PROPOSED CONIFEROUS TREE**
 - PROPOSED SHRUBS**
 - EXISTING TREE TO REMAIN**
 - CRITICAL ROOT ZONE (CRZ) FOR TREES WITH DBH GREATER THAN 10cm**
 - EXISTING HEDGEROW TO REMAIN**
 - BENCH**
 - SPECIES (SEE PLANT LIST)**
 - QUANTITY**
- TREE PROTECTION**
1. The Landscape Architect or Certified Arborist is to determine the location of the tree protection fencing and detail it on any associated plans for the site (e.g. tree conservation report, tree disclosure report, etc.).
 2. Under the guidance of a Landscape Architect or Certified Arborist, erect a fence at the critical root zone (CRZ) of trees. Diameter at breast height (DBH) is the trunk diameter measured at 1.3m height on the tree trunk. The CRZ is calculated as DBH x 10. Refer to the Tree Protection Fence detail.
 3. Refer to the Tree Protection Plan for fence location. City Forestry Staff are to approve both the plan and the installed fence prior to work commencement.
 4. Do not place any material or equipment within 2m of the CRZ of any tree, including outhouses.
 5. Do not attach any signs, notices, or posters to any tree.
 6. Do not disturb, raise, or lower the existing grade within the CRZ without approval.
 7. Only tunnel or bore when digging within the CRZ of a tree. Hand work only where required within the CRZ, absolutely no machinery permitted.
 8. Do not damage the root system, trunk, or branches, or any tree.
 9. Do not extend hard surface or significantly change landscaping.
 10. Ensure that exhaust fumes from all equipment are directed away from any tree canopy.
 11. When trees marked for removal overlap with the CRZ of trees marked for preservation: cut roots at the edge of the CRZ and grind down stumps after tree removals, do not pull out stumps. Ensure there is not root pulling or disturbance of the ground within the CRZ.
 12. Prior to work taking place, notify and consult the Landscape Architect and City Forestry Staff if roots must be cut. Roots 20mm or larger should be cut at right angles with clean, sharp horticultural tools without tearing, crushing, or pulling. Refer to City of Ottawa Specification S.P. F-8011 Tree Protection, Excavation of Root Zone.
 13. If damaged or objectionable branches are observed, consult the Landscape Architect before any work is conducted. Do not prune leaders. Do not prune more than 1/4 of crown.
 14. Set up a water and fertilizing program, if trees are being affected by site works, to the satisfaction of the Landscape Architect.
 15. The Landscape Architect is to prescribe mitigation measures if the protected fenced area must be reduced to facilitate construction. Measures may include the placement of plywood, wood chips, or steel plating over the roots for protection. City Forestry Staff are to approve said measures prior to fence movement.
 16. City of Ottawa By-law: Protects municipal trees and municipal natural areas in the City of Ottawa and trees on private property in the urban area of the City of Ottawa (2020-340).
- PLANTING**
1. Plant material to be No. 1 Grade and is to comply with Canadian Standards for Nursery Stock (latest edition) published by the Canadian Nursery Landscape Association. Use structurally sound plant material with strong fibrous root system free of disease, defects, and injuries. Use trees with straight trunks, well and characteristically branched for species. Obtain approval from consultant of plant material at source prior to digging. All trees and shrubs to be container grown, potted, W/B or B/B, as indicated on Plant List. Bare root plants are only acceptable for certain species and as approved by the Landscape Architect.
 2. Plant material substitutions are not to be permitted without the written approval from the Consultant, with 48 hours notice, prior to shipping plant material.
 3. Plant locations are schematic / approximate only. Contractor is to stake out locations on site for approval by the Landscape Architect prior to installation.
 4. The illustrated number of plants shown in the Planting Plan supersedes the estimated number in the Plant List. Contractor to report any discrepancies to the Landscape Architect prior to installation. Contractor will assume full responsibility if the Landscape Architect is not notified.
 5. Ensure trees are thoroughly watered following planting. Monitor material and ensure adequate moisture until acceptance.
 6. In heavy clay or poorly drained soils, set root ball with root collar 75-100mm higher than finished grade.
 7. Approved topsoil depths are as follows:
 - a. Plant Beds - 450mm continuous depth. Applies to shrubs, perennials, vines, and groundcovers.
 - b. Sod/Seed Areas - 100mm depth.
 8. Sod to be No. 1 Kentucky Bluegrass Sod grown from minimum mixture of 3 Kentucky Bluegrass cultivars. Quality and source are to comply with Canadian Standards for Nursery Stock, Section 17, (latest edition) published by the Canadian Nursery Landscape Nursery Landscape Association.
 9. Install a 1.2m sod strip adjacent to all hard surfaces. Note, sod is not typically graphically shown on plans.
 10. Apply the following mineral fertilizer unless soil tests show other requirements:
 - a. Plant Beds - (8-32-16), i.e. 8% Nitrogen, 32% Phosphorus, 16% Potash per manufacturer specifications.
 - b. Sod Areas - (8-32-16), i.e. 8% Nitrogen, 32% Phosphorus, 16% Potash at a rate of 350kg/ha.
 12. Where applicable, for any plant areas with a mix of species/cultivars notes, Contractor is to cluster like plants in groups of 3-5 and evenly distribute these in the noted area.

CITY DETAILS

Related details from City of Ottawa Standard Tender Documents Volume No. 2 Standard Detail Drawings.

SC4. Typical Concrete Sidewalk in Boulevard
 SC5. Sidewalk Construction Joints

NOVATECH DETAILS

Found on Sheet L7.

D1: Standard Deciduous Tree Planting
 D2: Standard Coniferous Tree Planting
 D3: Shrub and Perennial Planting
 D4: Tree Protection Fence
 D5: Bike Layout
 D6: Site furniture installation
 D7: Reforestation
 D8: Riverstone

SEED MIX AND APPLICATION

For areas steeper than 3:1, Contractor to apply erosion control blanket. Erosion control blanket to be machine woven mats made from natural wood, coco or cotton fiber, or combination depending on manufacturer, with stitching between two photo-degradable natural organic fiber nettings. Submit products for approval by Consultant. OPSS 804 applies except as may be amended and extended herein.

In addition to the specified seed mixes, all applications are to include a nurse crop as noted.

NURSE CROP
 40% Oats (Avena sativa)
 45% Barley (Hordeum vulgare)
 15% Canada Wild Rye (Elymus canadensis)
 Seeding Rate: 15kg/hectare

SEED MIX C
 CUSTOM NATIVE PARKING ISLAND SEED MIX BY DLF
 Seeding Rate: 25kg/hectare

PARKING LOT - PLANT LIST

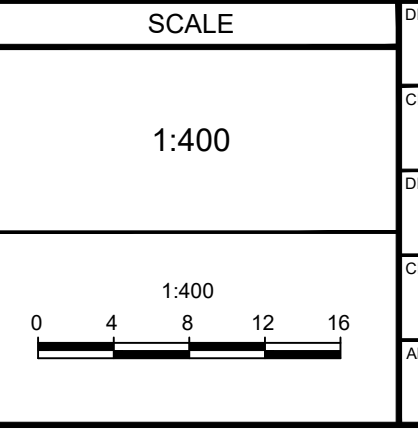
Deciduous Shrubs		Snowberry	
Sya	46	Symphoricarpos albus	1

NOTE:
 THE POSITION OF ALL POLE LINES, CONDUITS, WATERMANS, SEWERS AND OTHER UNDERGROUND AND OVERGROUND UTILITIES AND STRUCTURES IS NOT NECESSARILY SHOWN ON THE CONTRACT DRAWINGS, AND WHERE SHOWN, THE ACCURACY OF THE POSITION OF SUCH UTILITIES AND STRUCTURES IS NOT GUARANTEED. BEFORE STARTING WORK, DETERMINE THE EXACT LOCATION OF ALL SUCH UTILITIES AND STRUCTURES AND ASSUME ALL LIABILITY FOR DAMAGE TO THEM.

Owner:
 Rosefellow
 c/o Julian Nini
 750 Mariek Laun, Suite 210
 Saint-Laurent, QC H4M 2M4
 Phone: (514) 532-1080

NOT FOR CONSTRUCTION

No.	REVISION	DATE	BY
6.	REVISED PER CITY COMMENTS	OCT 12/23	RGJ
5.	REISSUED FOR SITE PLAN APPROVAL	SEP 15/23	RGJ
4.	ISSUED FOR SITE PLAN APPROVAL	AUG 4/23	RGJ
3.	REVISED PER CITY COMMENTS	MAY 31/23	RGJ
2.	REVISED PER CITY COMMENTS	MAR 30/23	RGJ
1.	ISSUED FOR CITY OF OTTAWA REVIEW	DEC 16/22	RGJ



DESIGN	FOR REVIEW ONLY
KW	
CHECKED	RGJ
DRAWN	TB
CHECKED	KW
APPROVED	RGJ

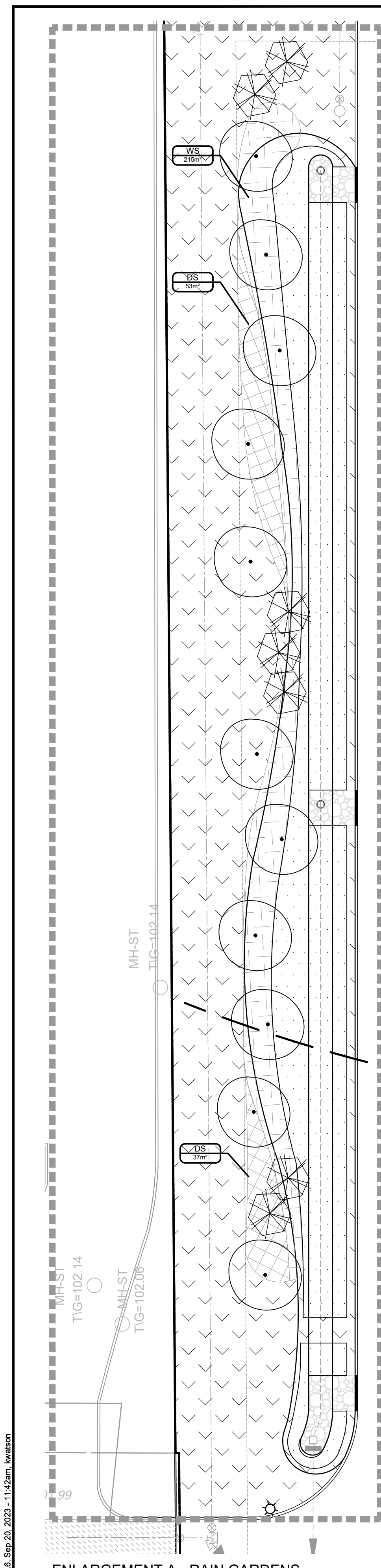
NOVATECH
 Engineers, Planners & Landscape Architects
 Suite 200, 240 Michael Cowpland Drive
 Ottawa, Ontario, Canada K2M 1P6
 Telephone: (613) 254-9643
 Facsimile: (613) 254-5867
 Website: www.novatech-eng.com

LOCATION		CITY OF OTTAWA	
405 HUNTMAR DRIVE - WAREHOUSE DEVELOPMENT		PROJECT No.	122151
DRAWING NAME		REV	REV # 6
LANDSCAPE PLAN		DRAWING No.	122151-L5

#18906

M:\2022\122151\122151-L5.dwg LS_Sep-20-2023-11:42am wawton

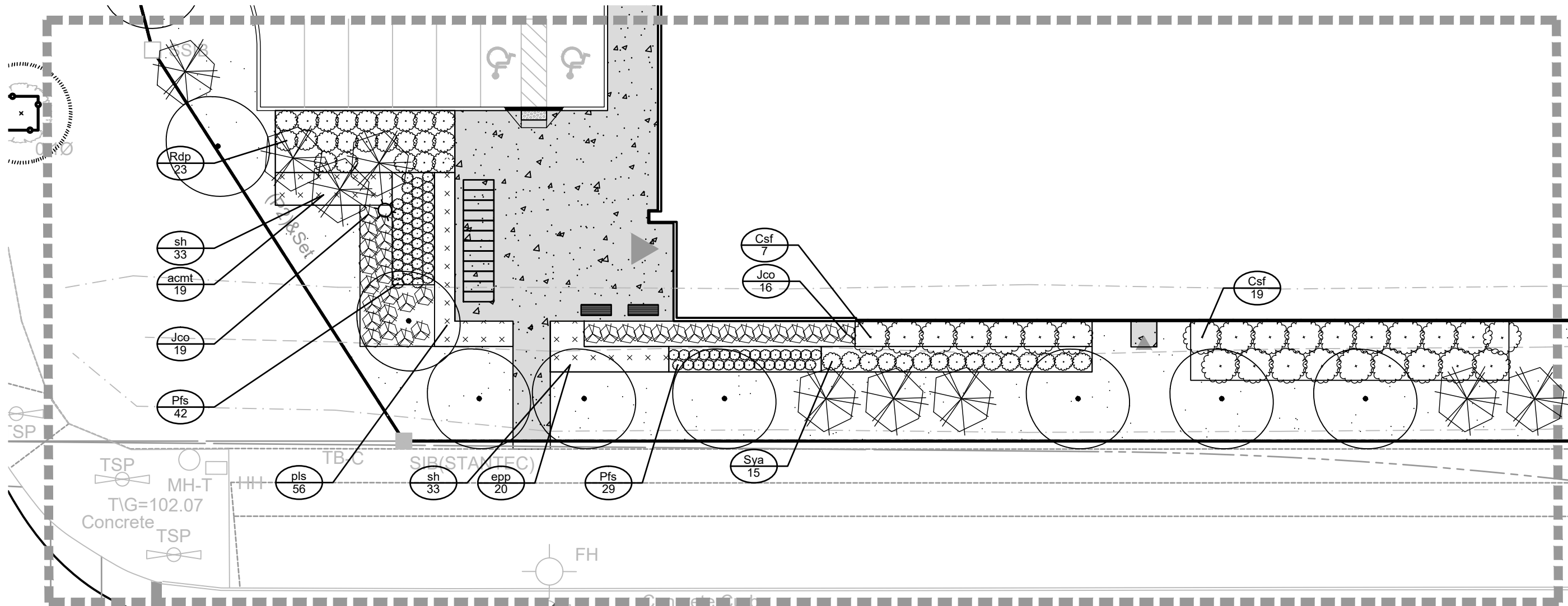
D07-12-22-0186



ENLARGEMENT A : PLANT LISTS

Dry Shrub Mix (DS)				
90 m ²		1500 mm O.C.		0.51 pcs/m ²
25%	12	<i>Ceanothus americanus</i>	New Jersey Tea	0.60m Ht BR 1.5m O.C.
20%	9	<i>Diervilla lonicera</i>	Bush Honeysuckle	0.60m Ht BR 1.5m O.C.
5%	2	<i>Physocarpus opulifolius</i>	Common Ninebark	0.60m Ht BR 1.5m O.C.
5%	2	<i>Rhus aromatica</i>	Fragrant Sumac	0.60m Ht BR 1.5m O.C.
25%	12	<i>Rubus odoratus</i>	Flowering Raspberry	0.60m Ht BR 1.5m O.C.
20%	9	<i>Symphoricarpos alba</i>	Snowberry	0.60m Ht BR 1.5m O.C.

Wet Shrub Mix (WS)				
215 m ²		1500 mm O.C.		0.51 pcs/m ²
20%	22	<i>Aronia melanocarpa</i>	Black Chokeberry	0.60m Ht BR 1.5m O.C. 1.3 1.0
15%	17	<i>Cephalanthus occidentalis</i>	Butterbush	0.60m Ht BR 1.5m O.C. 3.0 6.0
20%	22	<i>Cornus sericea</i>	Red Osier Dogwood	0.60m Ht BR 1.5m O.C. 2.0 2.5
5%	6	<i>Myrica gale</i>	Sweet Gale	0.60m Ht BR 1.5m O.C. 1.3 1.0
5%	6	<i>Salix petiolaris</i>	Slender Willow	0.60m Ht BR 1.5m O.C. 3.0 3.0
20%	22	<i>Spiraea alba</i>	White Meadowsweet	0.60m Ht BR 1.5m O.C. 1.5 1.5
15%	17	<i>Rosa palustris</i>	Swamp Rose	0.60m Ht BR 1.5m O.C. 3.0 2.4



ENLARGEMENT B : PLANT LISTS

Coniferous Shrubs				
Jco	1	35	<i>Juniperus horizontalis 'Plumosa Compacta'</i>	Compact Andorra Juniper 60cm Spr PT 100cm O.C.

Deciduous Shrubs				
Csf	28		<i>Cornus sericea 'Flaviramea'</i>	Yellow Twig Dogwood 60cm Ht PT 200cm O.C.
Pfs	71		<i>Potentilla fruticosa 'Bella Sol'</i>	Bella Sol Potentilla 40cm Ht PT 60cm O.C.
Rdp	23		<i>Rosa 'Dwarf Pavement'</i>	Dwarf Pavement Rose 60cm Ht PT 120cm O.C.
Sya	15		<i>Symphoricarpos albus</i>	Snowberry 50cm Ht PT 100cm O.C.

Perennials				
scmt	19		<i>Achillea millefolium 'Terra Cotta'</i>	Terra Cotta Yarrow 1ltr PT 45cm O.C.
epp	20		<i>Echinacea purpurea</i>	Purple Coneflower 1g PT 45cm O.C.
pls	56		<i>Perovskia atriplicifolia 'Little Spire'</i>	Dwarf Russian Sage 1g PT 60cm O.C.

Ornamental Grasses				
sh	66		<i>Sporobolus heterolepis</i>	Prairie Dropseed 1g PT 60cm O.C.

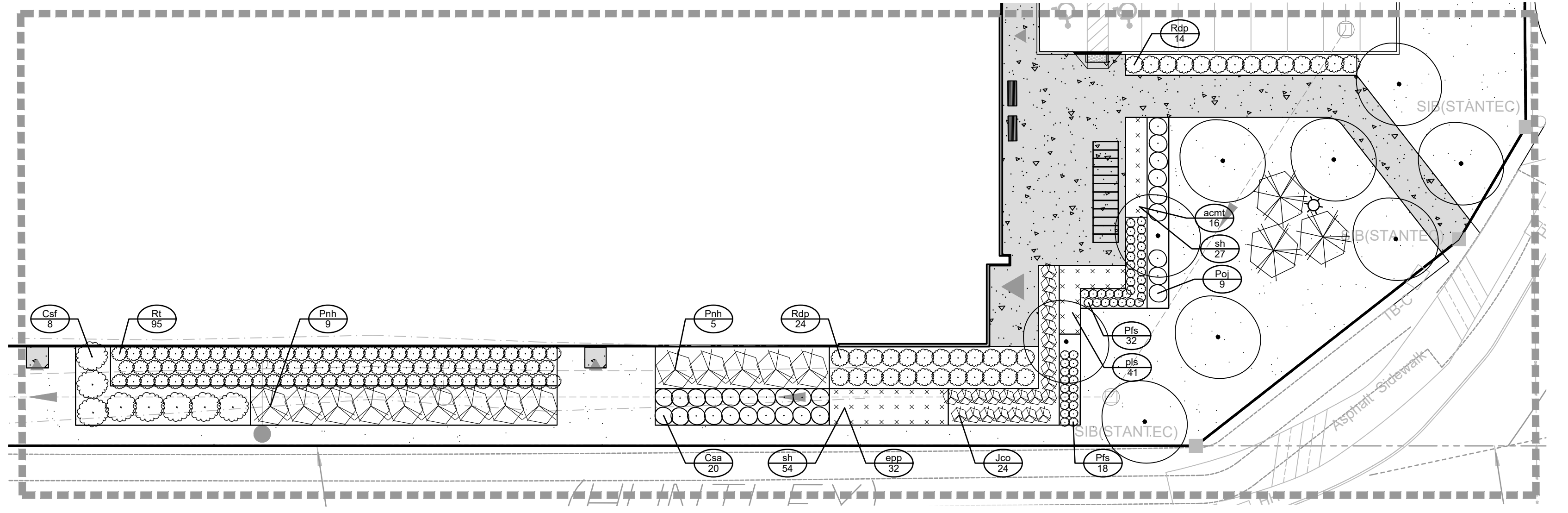
ENLARGEMENT C : PLANT LISTS

Coniferous Shrubs				
Jco	24		<i>Juniperus horizontalis 'Plumosa Compacta'</i>	Compact Andorra Juniper 60cm Spr PT 100cm O.C.
Pnh	14		<i>Pinus nigra 'Helga'</i>	Helga Austrian Pine 60cm Spr PT 240cm O.C.

Deciduous Shrubs				
Csa	20		<i>Cornus sericea 'Farrow'</i>	Arctic Fire Dogwood 60cm Ht PT 120cm O.C.
Csf	8		<i>Cornus sericea 'Flaviramea'</i>	Yellow Twig Dogwood 60cm Ht PT 200cm O.C.
Pfs	50		<i>Potentilla fruticosa 'Bella Sol'</i>	Bella Sol Potentilla 40cm Ht PT 60cm O.C.
Poj	9		<i>Physocarpus opulifolius 'JEFAM'</i>	Amber Jubilee Ninebark 60cm Ht PT 120cm O.C.
Rdp	38		<i>Rosa 'Dwarf Pavement'</i>	Dwarf Pavement Rose 60cm Ht PT 120cm O.C.
Rt	95		<i>Rhus typhina</i>	Staghorn Sumac 60cm Ht PT 100cm O.C.

Perennials				
scmt	16		<i>Achillea millefolium 'Terra Cotta'</i>	Terra Cotta Yarrow 1ltr PT 45cm O.C.
epp	32		<i>Echinacea purpurea</i>	Purple Coneflower 1g PT 45cm O.C.
pls	41		<i>Perovskia atriplicifolia 'Little Spire'</i>	Dwarf Russian Sage 1g PT 60cm O.C.

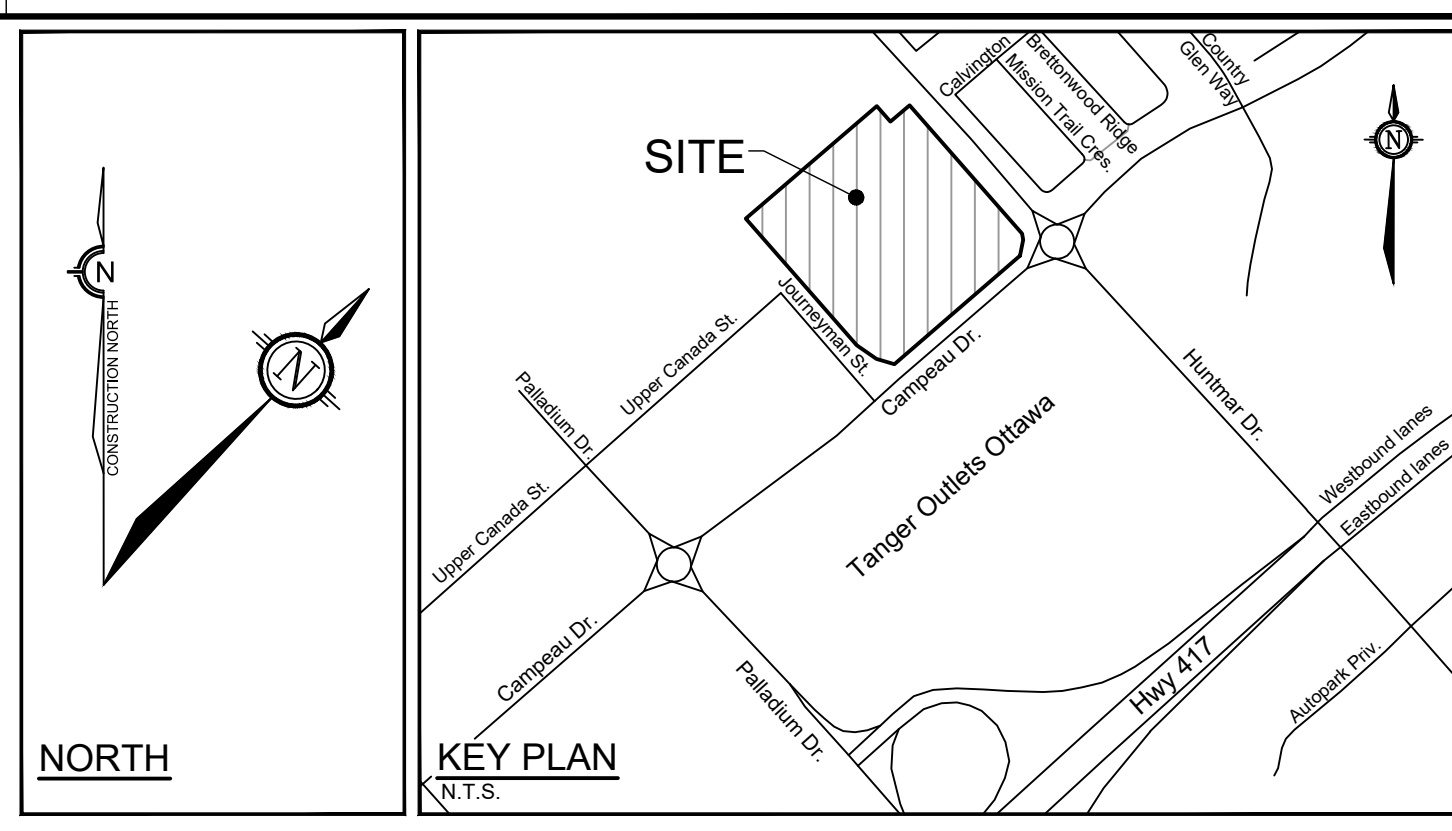
Ornamental Grasses				
sh	81		<i>Sporobolus heterolepis</i>	Prairie Dropseed 1g PT 60cm O.C.



Allan Hamlin

**ALLISON HAMLIN
MANAGER (A), DEVELOPMENT REVIEW WEST
PLANNING, REAL ESTATE & ECONOMIC DEVELOPMENT
DEPARTMENT, CITY OF OTTAWA**

APPROVED
By Allison Hamlin at 3:00 pm, Oct 13, 2023



- ### LEGEND
- PROPERTY LIMIT
 - PROPOSED CONCRETE
 - PROPOSED RIVER STONE
 - SOD
 - SEED MIX A
 - SEED MIX B
 - PROPOSED WET SHRUB MIX
 - PROPOSED DRY SHRUB MIX
 - PROPOSED DECIDUOUS TREE
 - PROPOSED CONIFEROUS TREE
 - PROPOSED SHRUBS
 - BENCH
 - SPECIES (SEE PLANT LIST)
 - QUANTITY
 - NATURALIZATION MIX
 - AREA
- ### TREE PROTECTION
- Implement the following protection measures for retained trees, both on site and on adjacent sites, prior to any work activity, including tree removal. Maintain tree protection fence in place and in good condition for the duration of site works:
- The Landscape Architect or Certified Arborist is to determine the location of the tree protection fencing and detail it on any associated plans for the site (e.g. tree conservation report, tree disclosure report, etc.).
 - Under the guidance of a Landscape Architect or Certified Arborist, erect a fence at the critical root zone (CRZ) of trees. Diameter at breast height (DBH) is the trunk diameter measured at 1.3m height on the tree trunk. The CRZ is calculated as DBH x 10. Refer to the Tree Protection Fence detail.
 - Refer to the Tree Protection Plan for fence location. City Forestry Staff are to approve both the plan and the installed fence prior to work commencement.
 - Do not place any material or equipment within 2m of the CRZ of any tree, including outhouses.
 - Do not attach any signs, notices, or posters to any tree.
 - Do not disturb, raise, or lower the existing grade within the CRZ without approval.
 - Only tunnel or bore when digging within the CRZ of a tree. Hand work only where required within the CRZ, absolutely no machinery permitted.
 - Do not damage the root system, trunk, or branches, or any tree.
 - Do not extend hard surface or significantly change landscaping.
 - Ensure that exhaust fumes from all equipment are directed away from any tree canopy.
 - When trees marked for removal overlap with the CRZ of trees marked for preservation, cut roots at the edge of the CRZ and grind down stumps after tree removals, do not pull out stumps. Ensure there is no root pulling or disturbance of the ground within the CRZ.
 - Prior to work taking place, notify and consult the Landscape Architect and City Forestry Staff if roots must be cut. Roots 20mm or larger should be cut at right angles with clean, sharp horticultural tools without tearing, crushing, or pulling. Refer to City of Ottawa Specification S.P. F-8011 Tree Protection, Excavation of Root Zone.
 - If damaged or objectionable branches are observed, consult the Landscape Architect, before any work is conducted. Do not prune leaders. Do not prune more than 1/4 of crown.
 - Set up a water and fertilizing program, if trees are being affected by site works, to the satisfaction of the Landscape Architect.
 - The Landscape Architect is to prescribe mitigation measures if the protected fenced area must be reduced to facilitate construction. Measures may include the placement of plywood, wood chips, or steel plating over the roots for protection. City Forestry Staff are to approve said measures prior to fence movement.
 - City of Ottawa By-law: Protects municipal trees and municipal natural areas in the City of Ottawa and trees on private property in the urban area of the City of Ottawa (2020-340).

- ### CITY DETAILS
- Related details from City of Ottawa Standard Tender Documents Volume No. 2 Standard Detail Drawings.
- SC4. Typical Concrete Sidewalk in Boulevard
 - SC5. Sidewalk Construction Joints

- ### NOVATECH DETAILS
- Found on Sheet L7.
- D1. Standard Deciduous Tree Planting
 - D2. Standard Coniferous Tree Planting
 - D3. Shrub and Perennial Planting
 - D4. Tree Protection Fence
 - D5. Bike Layout
 - D6. Site furniture installation
 - D7. Reforestation
 - D8. Riverstone

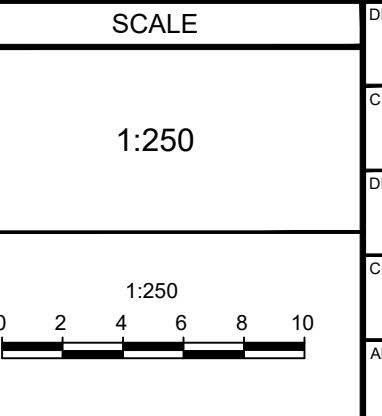
- ### SEED MIX AND APPLICATION
- For areas steeper than 3:1, Contractor to apply erosion control blanket. Erosion control blanket to be machine woven mats made from natural wood, coco or cotton fiber, or combination depending on manufacturer, with stitching between two photo-degradable natural organic fiber nettings. Submit products for approval by Consultant. OPSS 804 applies except as may be amended and extended herein.
- In addition to the specified seed mixes, all applications are to include a nurse crop as noted.
- NURSE CROP**
40% Oats (*Avena sativa*)
45% Barley (*Hordeum vulgare*)
15% Canada Wild Rye (*Elymus canadensis*)
Seeding Rate: 15kg/hectare
- SEED MIX A**
RETENTION AREA BY DLF
Seeding Rate: 25kg/hectare
- SEED MIX B**
CUSTOM GREENFIELD MIX (230314) BY DLF
Seeding Rate: 25kg/hectare
- In heavy clay or poorly drained soils, set root ball with root collar 75-100mm higher than finished grade.
 - Approved topsoil depths are as follows:
 - Plant Beds - 450mm continuous depth. Applies to shrubs, perennials, vines, and groundcovers.
 - Sod/Seed Areas - 100mm depth.
 - Reforestation - 300mm depth.
 - Sod to be No. 1 Kentucky Bluegrass Sod grown from minimum mixture of 3 Kentucky Bluegrass cultivars. Quality and source are to comply with Canadian Standards for Nursery Stock, Section 17, (latest edition) published by the Canadian Nursery Landscape Nursery Landscape Association.
 - Apply the following mineral fertilizer unless soil tests show other requirements:
 - Plant Beds - (8-32-16), i.e. 8% Nitrogen, 32% Phosphorus, 16% Potash per manufacturer specifications.
 - Sod Areas - (8-32-16), i.e. 8% Nitrogen, 32% Phosphorus, 16% Potash at a rate of 350kg/ha.
 - Where applicable, for any plant areas with a mix of species/cultivars notes, Contractor is to cluster like plants in groups of 3-5 and evenly distribute these in the noted area.

NOTE:
THE POSITION OF ALL POLE LINES, CONDUITS, WATERMANS, SEWERS AND OTHER UNDERGROUND AND OVERGROUND UTILITIES AND STRUCTURES IS NOT NECESSARILY SHOWN ON THE CONTRACT DRAWINGS, AND WHERE SHOWN, THE ACCURACY OF THE POSITION OF SUCH UTILITIES AND STRUCTURES IS NOT GUARANTEED. BEFORE STARTING WORK, DETERMINE THE EXACT LOCATION OF ALL SUCH UTILITIES AND STRUCTURES AND ASSUME ALL LIABILITY FOR DAMAGE TO THEM.

Owner:
Rosefellow
c/o Julian Nini
750 Mariee Laurin, Suite 210
Saint-Laurent, QC H4M 2M4
Phone: (514) 532-1080

**NOT FOR
CONSTRUCTION**

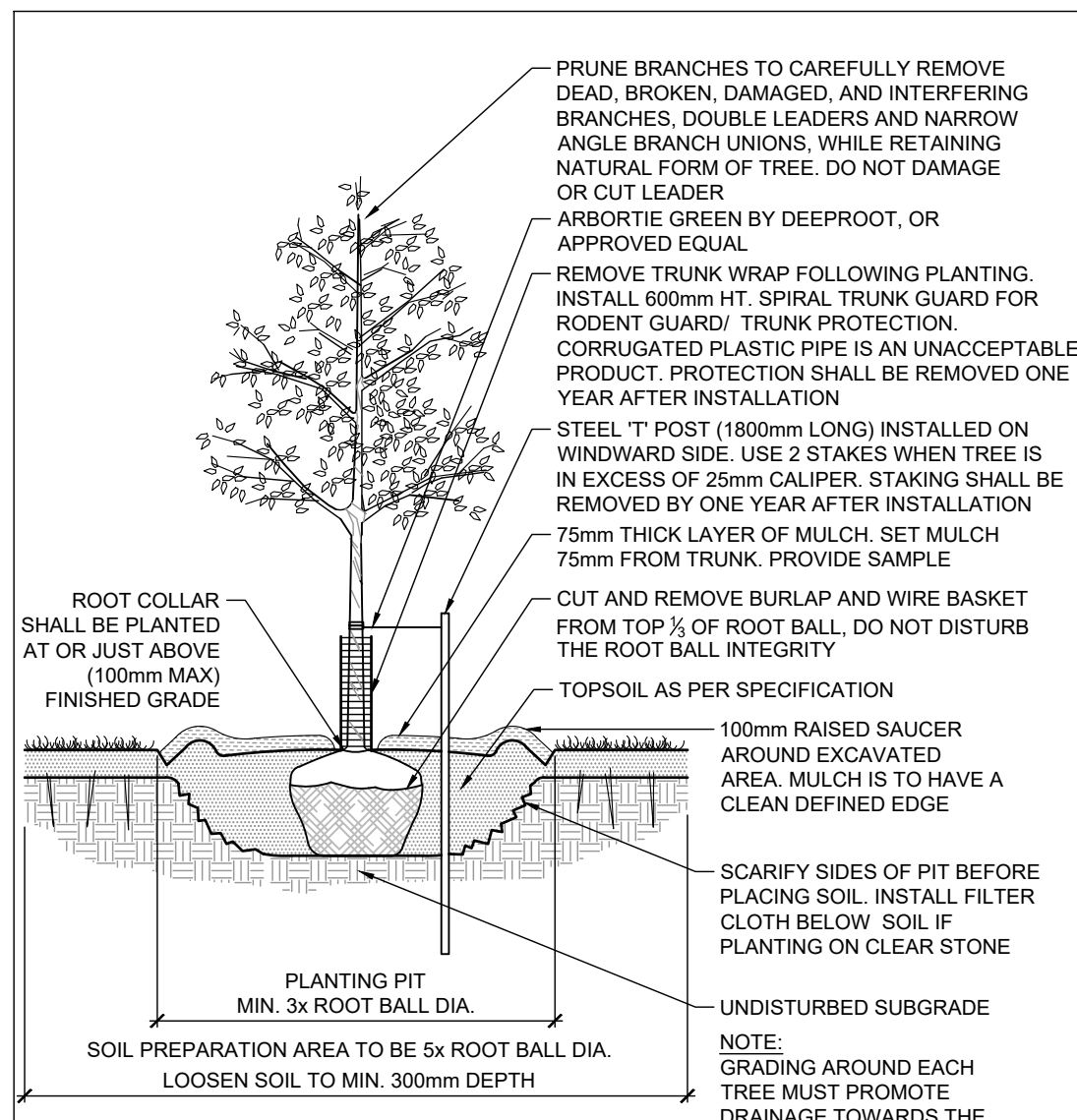
No.	REVISION	DATE	BY
6.	REVISED PER CITY COMMENTS	OCT 12/23	RGJ
5.	REISSUED FOR SITE PLAN APPROVAL	SEP 15/23	RGJ
4.	ISSUED FOR SITE PLAN APPROVAL	AUG 4/23	RGJ
3.	REVISED PER CITY COMMENTS	MAY 31/23	RGJ
2.	REVISED PER CITY COMMENTS	MAR 30/23	RGJ
1.	ISSUED FOR CITY OF OTTAWA REVIEW	DEC 16/22	RGJ



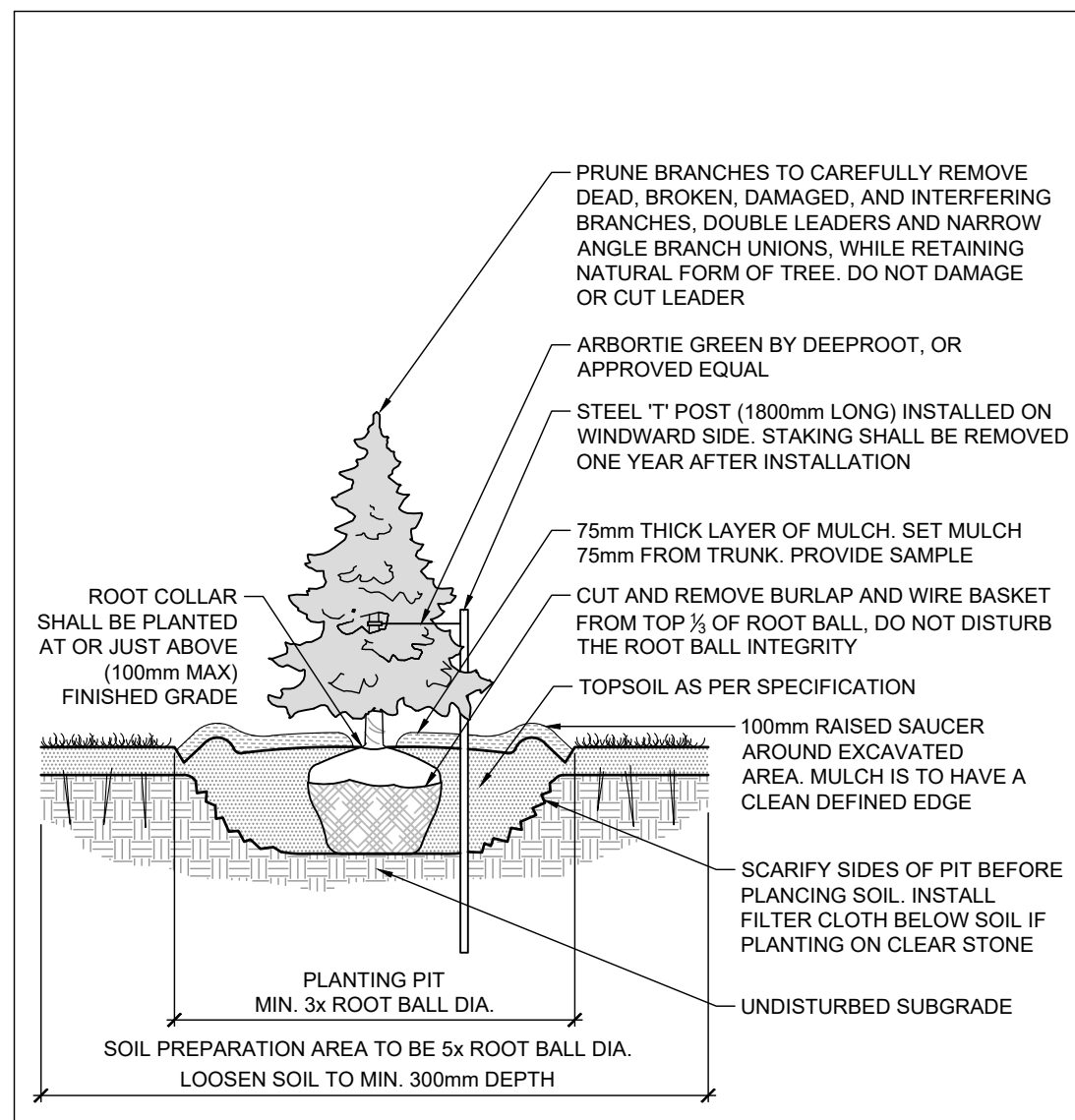
DESIGN	FOR REVIEW ONLY
KW	
CHECKED	RGJ
DRAWN	TB
CHECKED	KW
APPROVED	RGJ



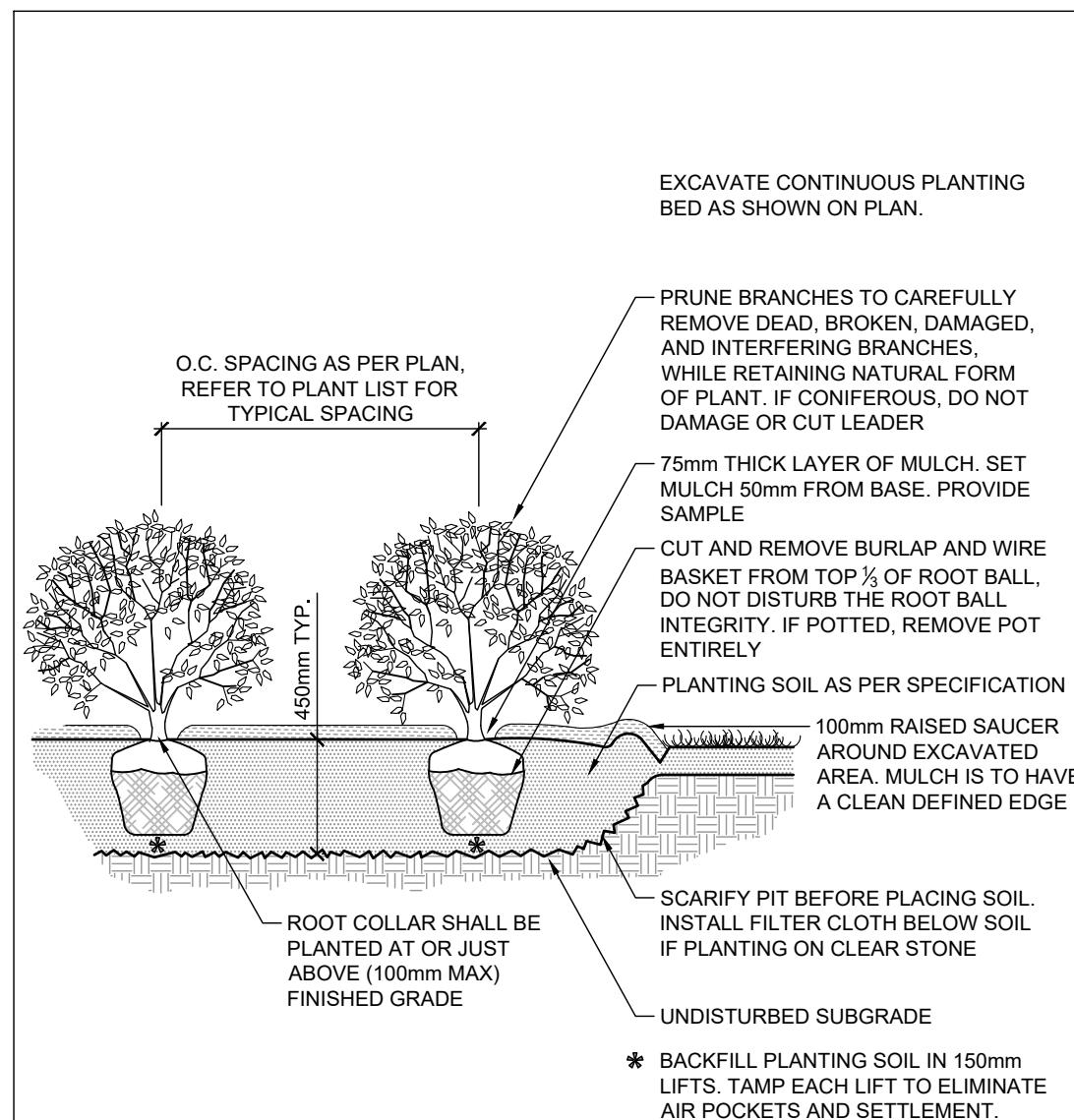
LOCATION		PROJECT No.	
CITY OF OTTAWA		122151	
405 HUNTMAR DRIVE - WAREHOUSE DEVELOPMENT		REV #	
DRAWING NAME		REV # 6	
LANDSCAPE ENLARGEMENTS		DRAWING No.	
		122151-L6	



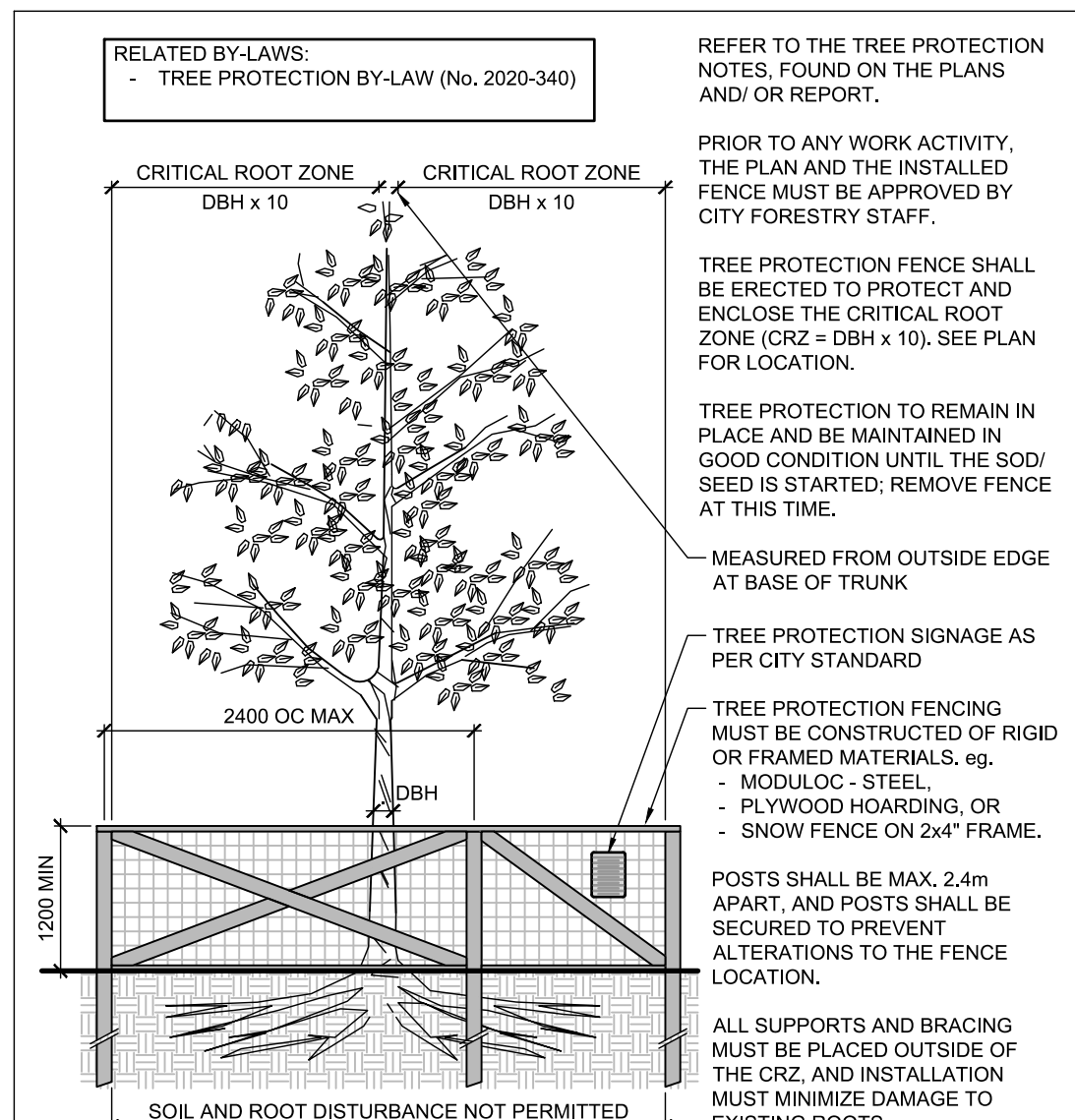
STANDARD DECIDUOUS TREE PLANTING **D1**



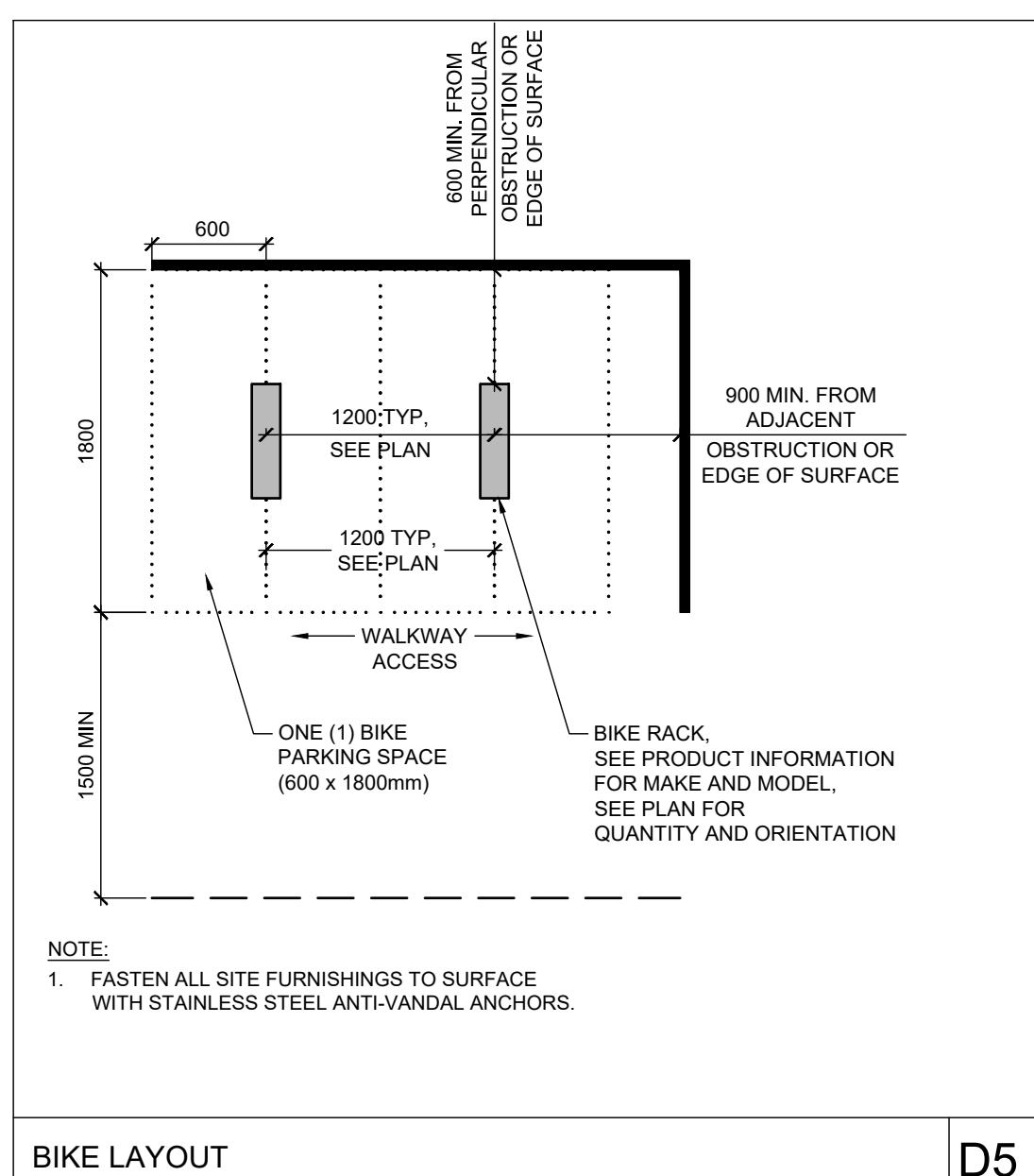
STANDARD CONIFEROUS TREE PLANTING **D2**



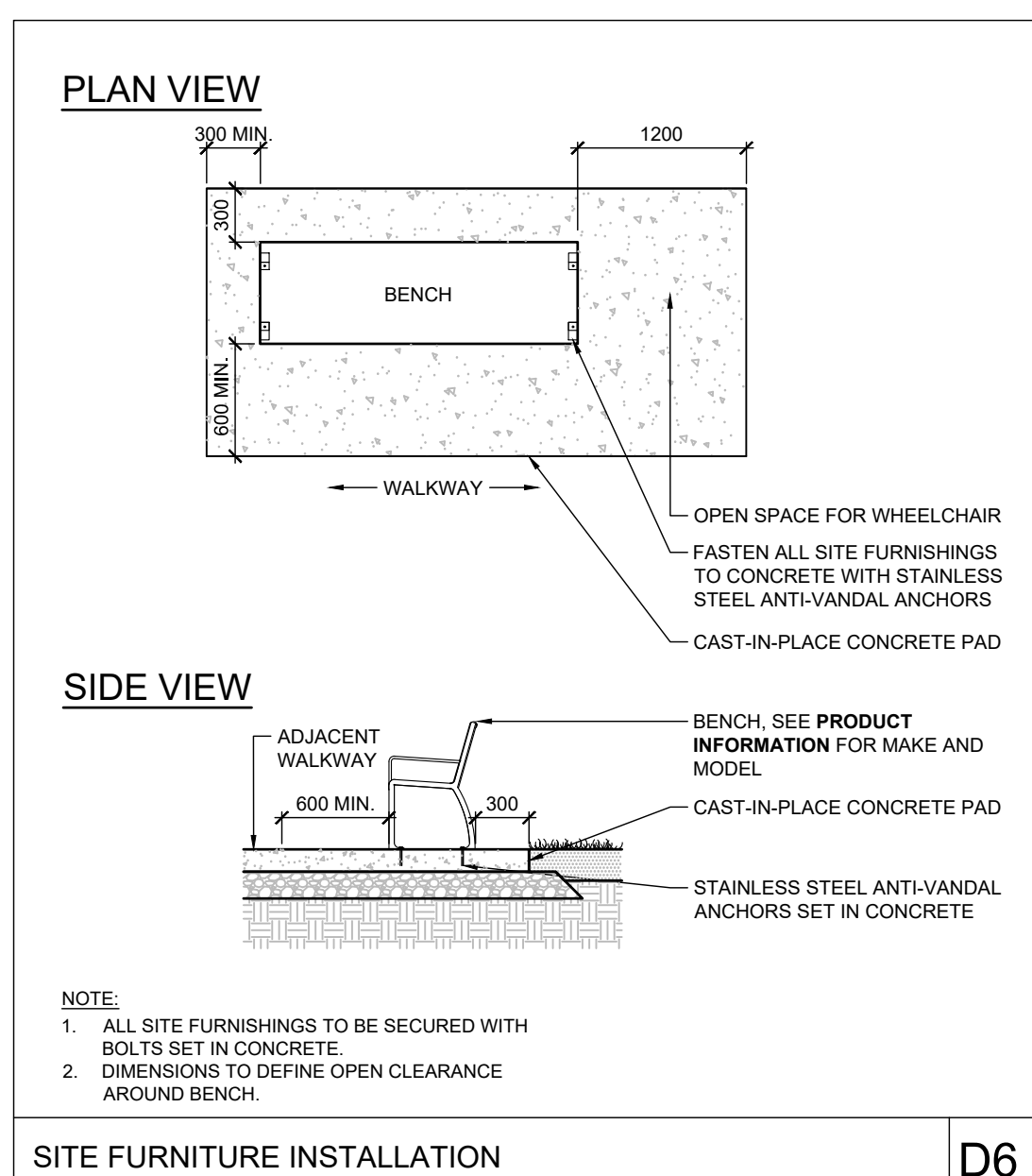
SHRUB AND PERENNIAL PLANTING **D3**



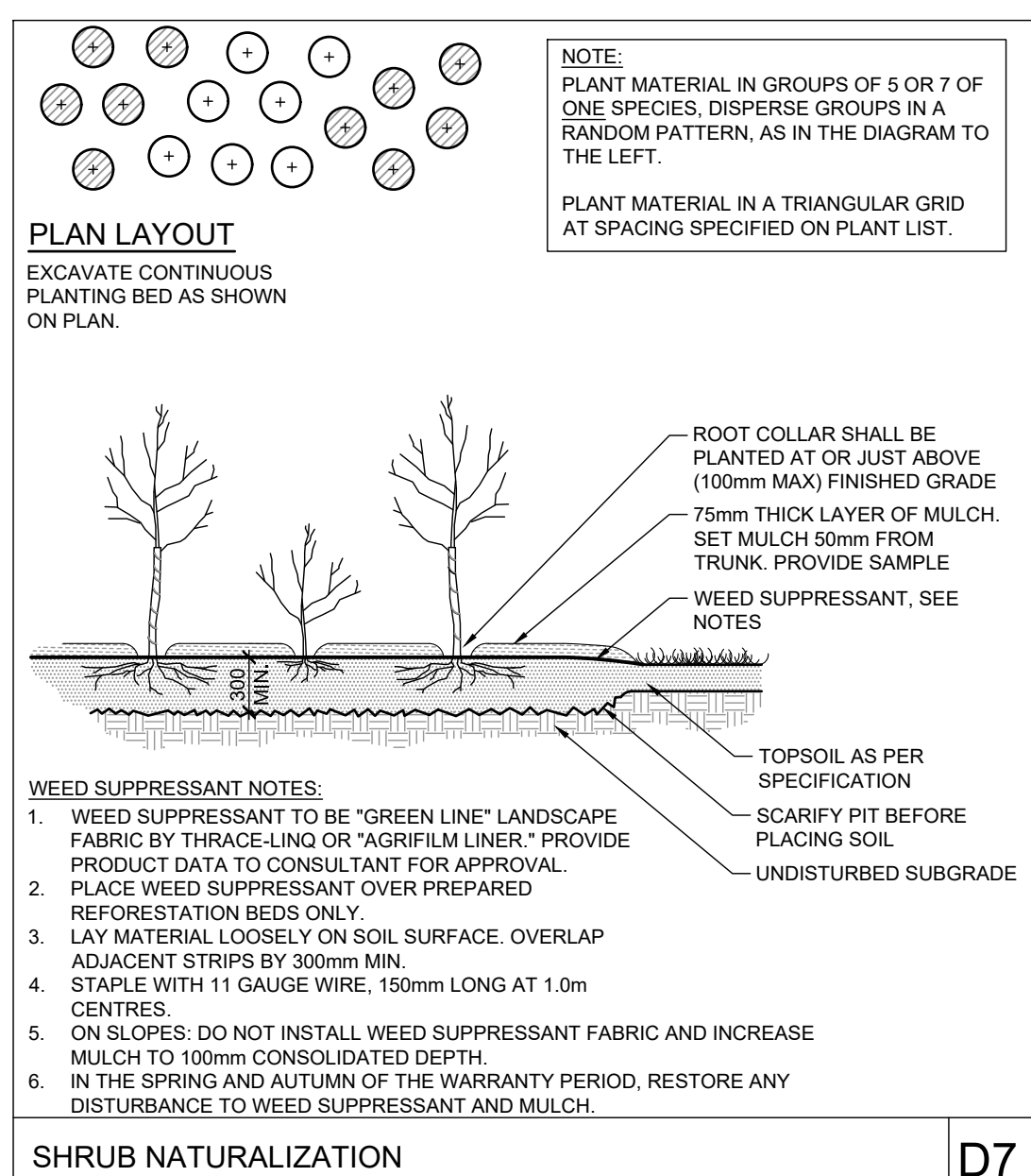
TREE PROTECTION FENCE **D4**



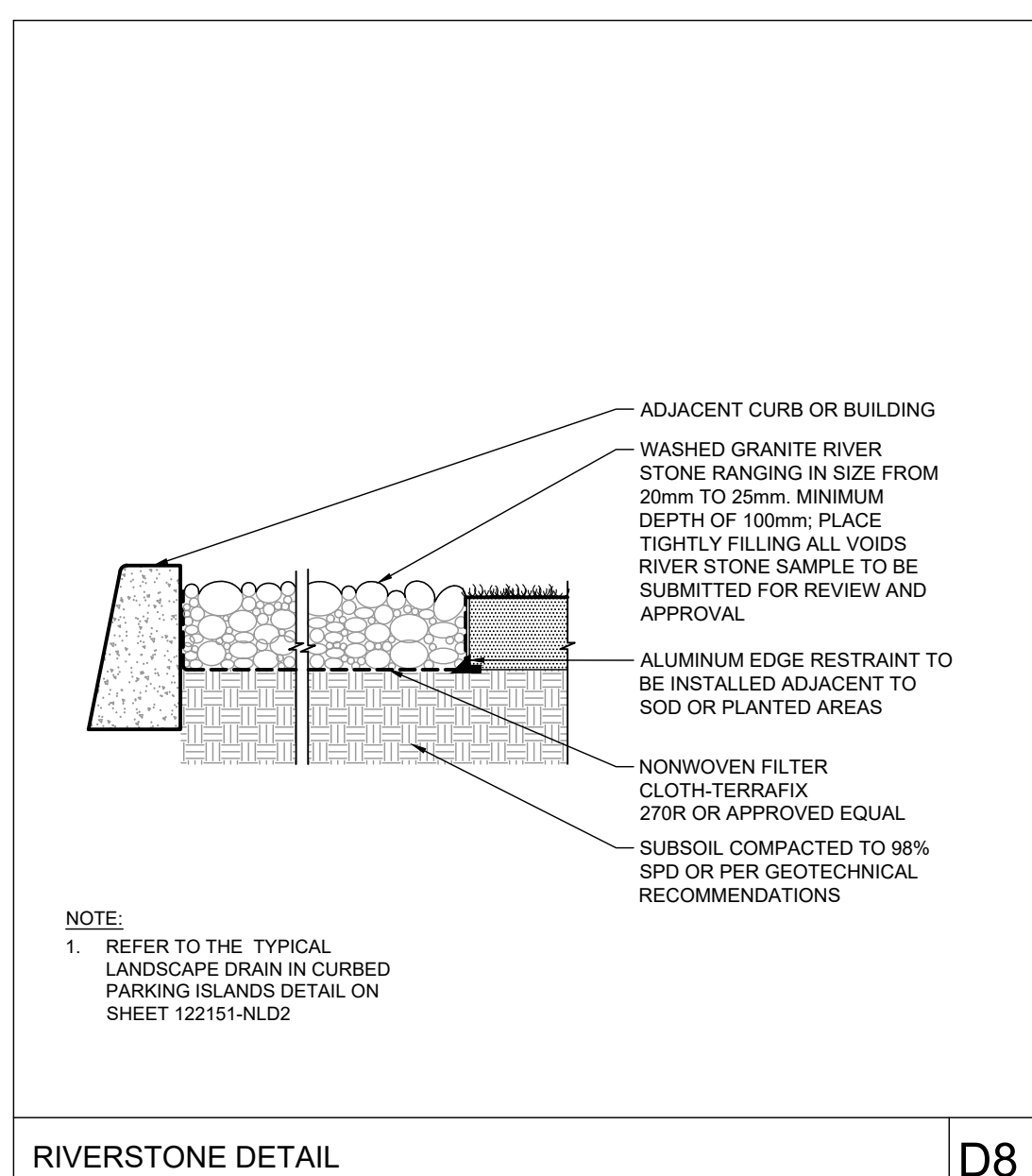
BIKE LAYOUT **D5**



SITE FURNITURE INSTALLATION **D6**



SHRUB NATURALIZATION **D7**



RIVERSTONE DETAIL **D8**

Allison Hamlin

ALLISON HAMLIN
MANAGER (A), DEVELOPMENT REVIEW WEST
PLANNING, REAL ESTATE & ECONOMIC DEVELOPMENT
DEPARTMENT, CITY OF OTTAWA

APPROVED
By Allison Hamlin at 2:58 pm, Oct 13, 2023

NOTE: THE POSITION OF ALL POLE LINES, CONDUITS, WATERMANS, SEWERS AND OTHER UNDERGROUND AND OVERGROUND UTILITIES AND STRUCTURES IS NOT NECESSARILY SHOWN ON THE CONTRACT DRAWINGS, AND WHERE SHOWN, THE ACCURACY OF THE POSITION OF SUCH UTILITIES AND STRUCTURES IS NOT GUARANTEED. BEFORE STARTING WORK, DETERMINE THE EXACT LOCATION OF ALL SUCH UTILITIES AND STRUCTURES AND ASSUME ALL LIABILITY FOR DAMAGE TO THEM.

Owner:
Rosefellow
c/o Julian Nini
750 Marie-Laurin, Suite 210
Saint-Laurent, QC H4M 2M4
Phone: (514) 532-1080

NOT FOR CONSTRUCTION

No.	REVISION	DATE	BY
6.	REVISED PER CITY COMMENTS	OCT 12/23	RGJ
5.	REISSUED FOR SITE PLAN APPROVAL	SEP 15/23	RGJ
4.	ISSUED FOR SITE PLAN APPROVAL	AUG 4/23	RGJ
3.	REVISED PER CITY COMMENTS	MAY 31/23	RGJ
2.	REVISED PER CITY COMMENTS	MAR 30/23	RGJ
1.	ISSUED FOR CITY OF OTTAWA REVIEW	DEC 16/22	RGJ

SCALE	DESIGN
	KW
	CHECKED RGJ
	DRAWN KW
	CHECKED KW
	APPROVED RGJ

FOR REVIEW ONLY	

NOVATECH
Engineers, Planners & Landscape Architects
Suite 200, 240 Michael Cowpland Drive
Ottawa, Ontario, Canada K2M 1P6
Telephone (613) 254-9643
Facsimile (613) 254-5867
Website www.novatech-eng.com

LOCATION	
CITY OF OTTAWA 405 HUNTMAR DRIVE - WAREHOUSE DEVELOPMENT	
DRAWING NAME	
LANDSCAPE DETAILS	
PROJECT No.	122151
REV	
REV #	6
DRAWING No.	122151-L7