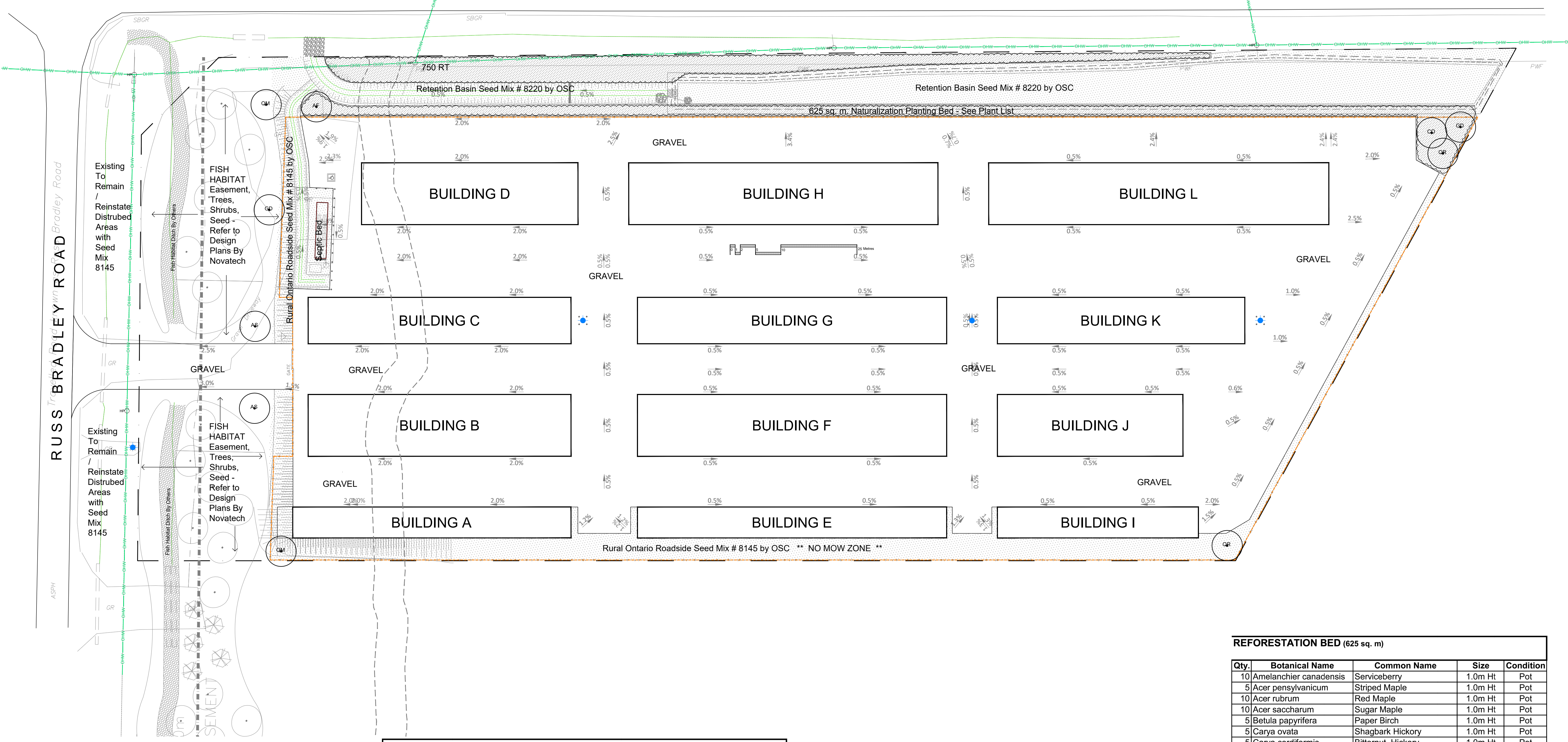


Drawing Remains the Property of Copyright Reserved by GJA INC. Do Not Use or Reproduce Without Approval of GJA INC. NOT To Be Used For Construction Unless Indicated by Revision: **FOR LANDSCAPE CONSTRUCTION**. Contractor is Responsible for Verification of Site Locations of all Utilities. Report any Discrepancies Between Site and Drawing Immediately to GJA INC. Do NOT Proceed Until Clarified.

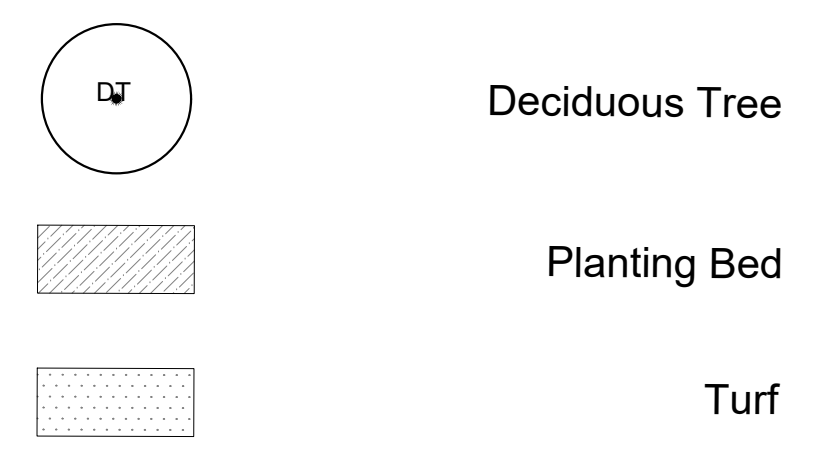
TURF AREAS TO BE SEED as Specified CW 150MM DEPTH TOPSOIL ON APPROVED SUBGRADE | PLANTING MIX TO BE APPROVED BY LANDSCAPE ARCHITECT | PLANT MATERIAL TO MEET CNLA STANDARDS/BE APPROVED BY LANDSCAPE ARCHITECT PRIOR TO PLANTING | ALL MATERIALS & WORK TO BE MAINTAINED UNTIL FINAL ACCEPTANCE. (MOWING TURF, WEEDING BEDS, WATERING TURF & PLANTS) & INCLUDE 1 YEAR WARRANTY FROM DATE OF FINAL ACCEPTANCE | PROVIDE WATERING OF ALL PLANT MATERIAL AS REQUIRED FOR PROPER ESTABLISHMENT UNTIL END OF WARRANTY PERIOD | REFER TO CIVIL ENGINEER'S DRAWING FOR ELEVATIONS / GRADING |

The Landscape Plan is to be read in conjunction with the grading, servicing, site and survey plan | Bare root material to be planted in season only | All plant material locations to be staked on site by the landscape contractor and checked by the landscape architect prior to planting | All trees to be preserved on or directly adjacent to the site will be protected | Plant material are to be installed a minimum of 3.0m away from any part of any hydro transformer, 3.0m corridor between a fire hydrant and the curb, a 2.5m radius beside or behind a fire hydrant, 2.0m from any servicing/utility line or structure |

CARP ROAD REGIONAL ROAD 5 known as the Carp Road



LANDSCAPE PLAN LEGEND



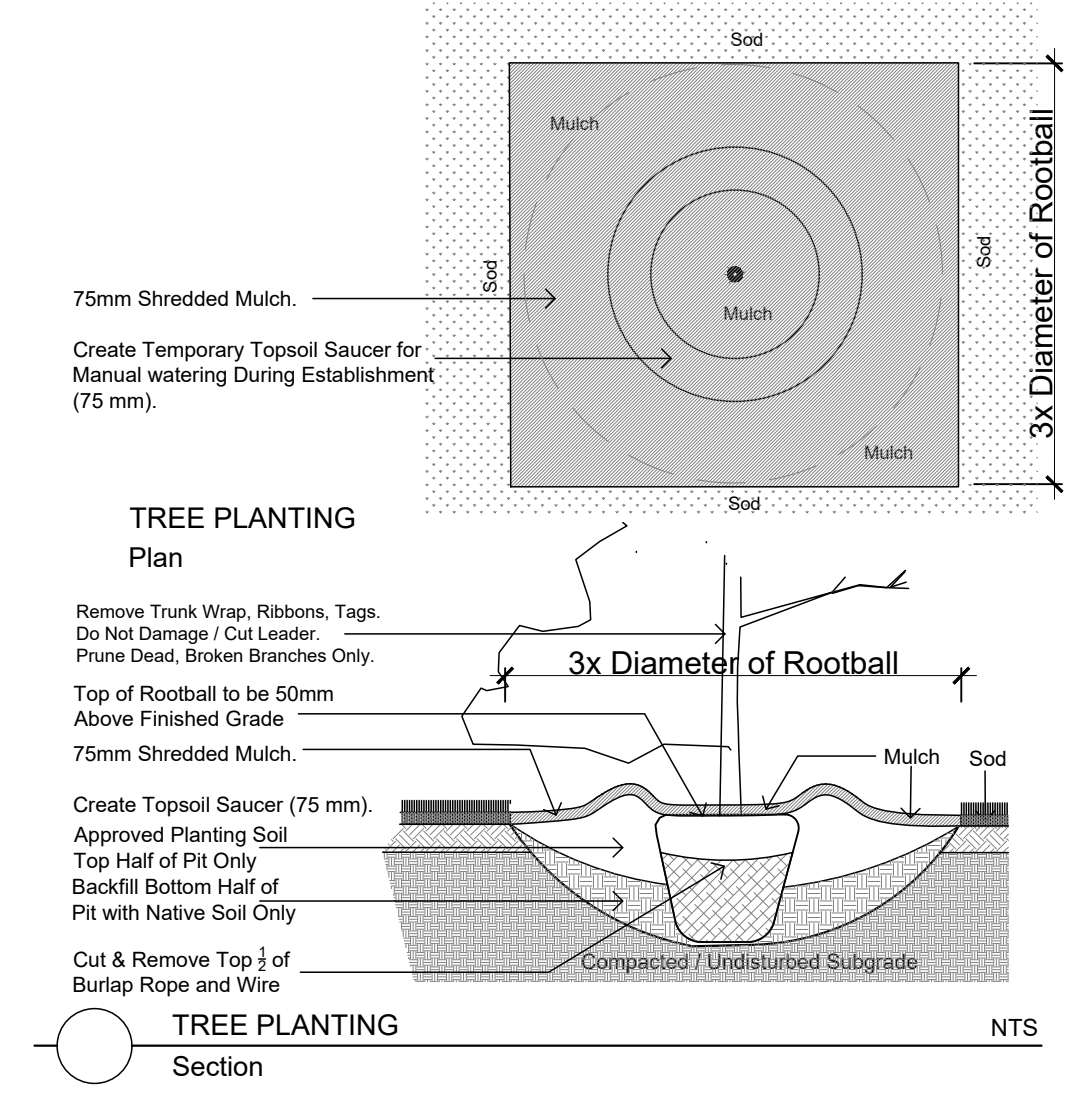
CALIPER B AND B TREES -273 275 RUSS BRADLEY CARP

Code	Qty.	Botanical Name	Common Name	Size	Condition
AF	1	Acer x freemanii 'Autumn Blaze'	Autumn Blaze Freeman Maple	60mm cal	B + B specimen
AS	2	Acer saccharum	Sugar Maple	60mm cal	B + B specimen
CO	1	Celtis occidentalis	Common Hackberry	60mm cal	B + B specimen
GD	2	Gymnocladus dioica	Kentucky Coffee Tree	60mm cal	B + B specimen
QM	2	Quercus macrocarpa	Burr Oak	70mm cal	B + B specimen
QR	2	Quercus rubra	Red Oak	60mm cal	B + B specimen
RT	750	Rhus typhina	Staghorn Sumac	30cm Plug	

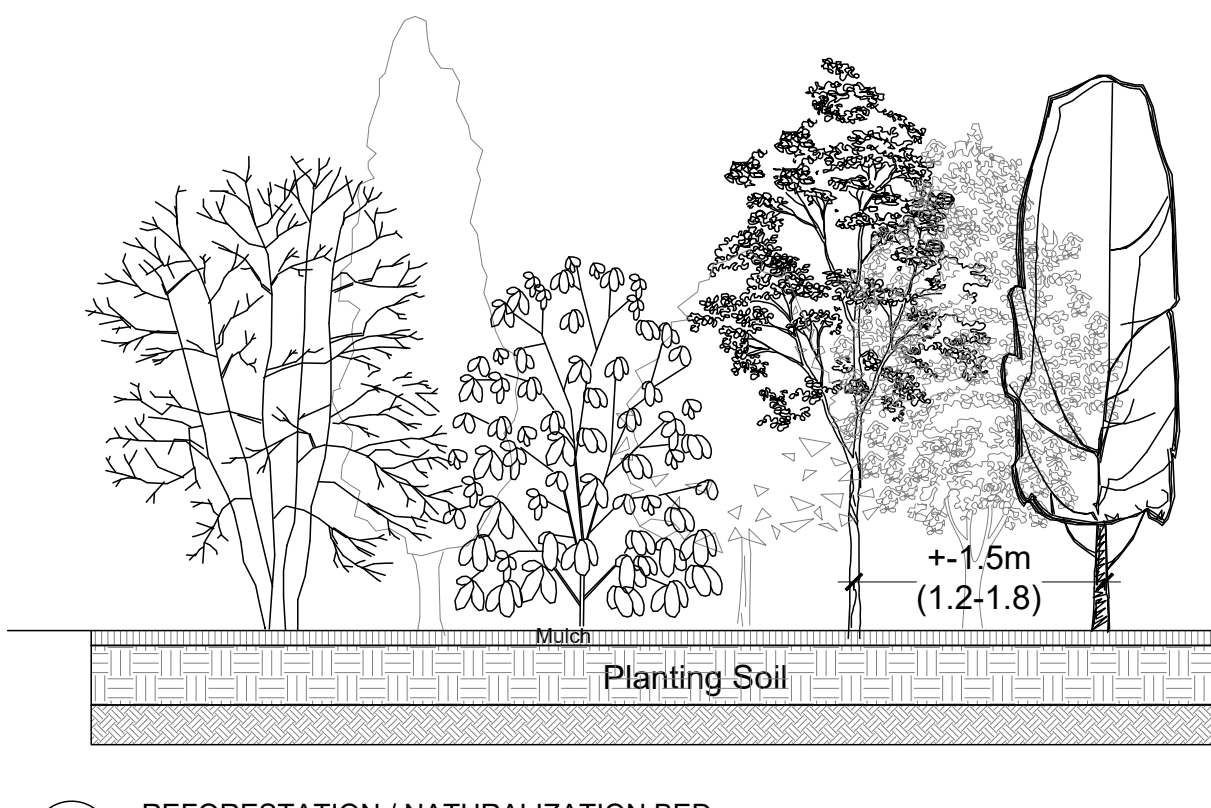
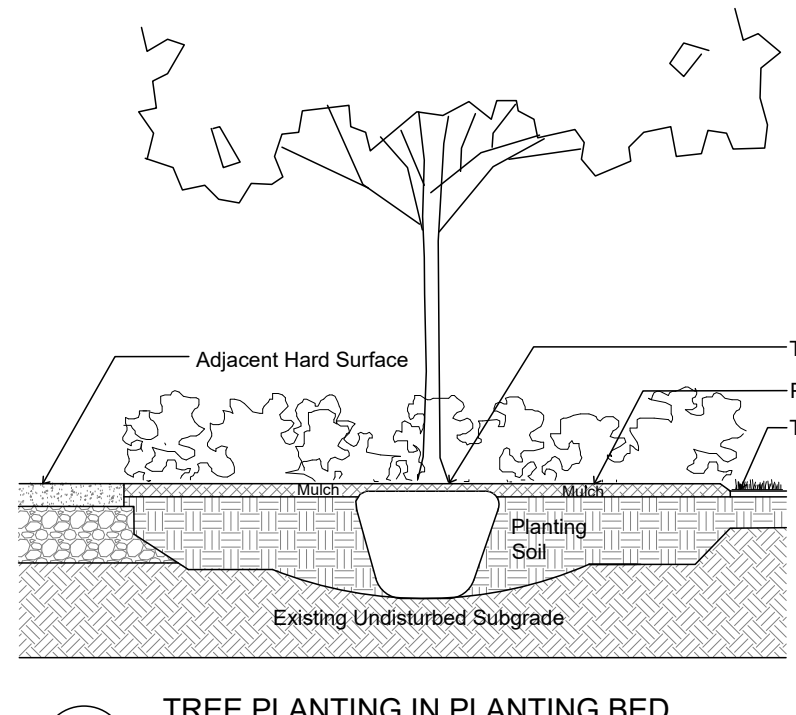
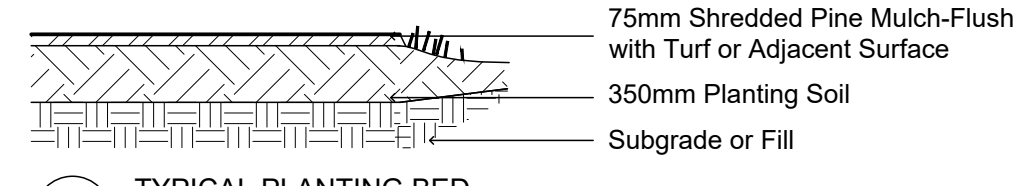
REFORESTATION BED (625 sq. m)

Qty.	Botanical Name	Common Name	Size	Condition
10	Amelanchier canadensis	Serviceberry	1.0m Ht	Pot
5	Acer pensylvanicum	Striped Maple	1.0m Ht	Pot
10	Acer rubrum	Red Maple	1.0m Ht	Pot
10	Acer saccharum	Sugar Maple	1.0m Ht	Pot
5	Betula papyrifera	Paper Birch	1.0m Ht	Pot
5	Carya ovata	Shagbark Hickory	1.0m Ht	Pot
5	Carya cordiformis	Bitternut Hickory	1.0m Ht	Pot
15	Celtis occidentalis	Common Hackberry	1.0m Ht	Pot
5	Cornus alternifolia	Pagoda Dogwood	1.0m Ht	Pot
5	Cornus racemosa	Grey Dogwood	1.0m Ht	Pot
10	Ostrya virginiana	Hophornbeam Ironwood	1.0m Ht	Pot
10	Prunus pensylvanica	Pin Cherry	1.0m Ht	Pot
10	Prunus serotina	Black Cherry	1.0m Ht	Pot
5	Quercus alba	White Oak	1.0m Ht	Pot
5	Quercus bicolor	Swamp White Oak	1.0m Ht	Pot
5	Quercus macrocarpa	Bur Oak	1.0m Ht	Pot
5	Quercus rubra	Red Oak	1.0m Ht	Pot
5	Viburnum lentago	Nannyberry	1.0m Ht	Pot
TOTAL DECIDUOUS 130				
5	Abies balsamea	Balsam Fir	50cm Ht.	Pot
5	Juniperus virginiana	Eastern Red Cedar	50cm Ht.	Pot
5	Larix laricina	Eastern Larch / Tamarack	50cm Ht.	Pot
5	Picea glauca	White Spruce	50cm Ht.	Pot
5	Picea mariana	Black Spruce	50cm Ht.	Pot
5	Pinus strobus	White Pine	50cm Ht.	Pot
5	Tsuga canadensis	Canadian Hemlock	50cm Ht.	Pot
TOTAL CONIFEROUS 35				
35	Rhus typhina	Staghorn Sumac	30cm Ht.	Pot

Spacing to Vary 1.5 to 2.1m / 5' to 7' On Centre

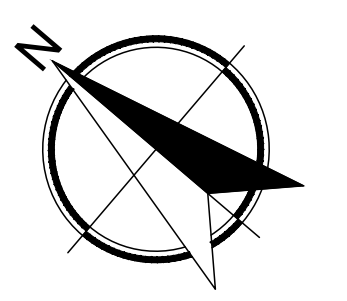


During Excavation/Bed Preparation if Extreme Conditions are Encountered (Water, Rock, Gravel...) that Could Effect Planting, Notify GJALA Immediately.



Planting Bed c/w Biodegradable Weed Barrier. 75 mm Mulch Weed Barrier Fabric 350mm Planting Soil Modified/Scarified/Loosened Subgrade 200mm Depth

#	REVISION	DATE
1	FIRST SUBMISSION SPC	DECEMBER 22 2022
0	REVIEW/COORDINATION	DECEMBER 2022



2852569 Ontario Inc. c/o Trevor Watkins
971 Melrose Road
Shannonville, Ontario
K0K 3A0

Property Owner
Gino J. Aiello | landscape architect GJALA.com
GJA Inc. Gms@GJALA.com (613) 286 5130
110 Deabury Road Unit # 8 | Ottawa Ontario K1Z 0Z2

Project
WAREHOUSE/STORAGE FACILITY
273 & 275 RUSS BRADLEY ROAD,
CARP, ON

LANDSCAPE PLAN

Scale: 1:400

L1

D07-xx-xx-xxxx