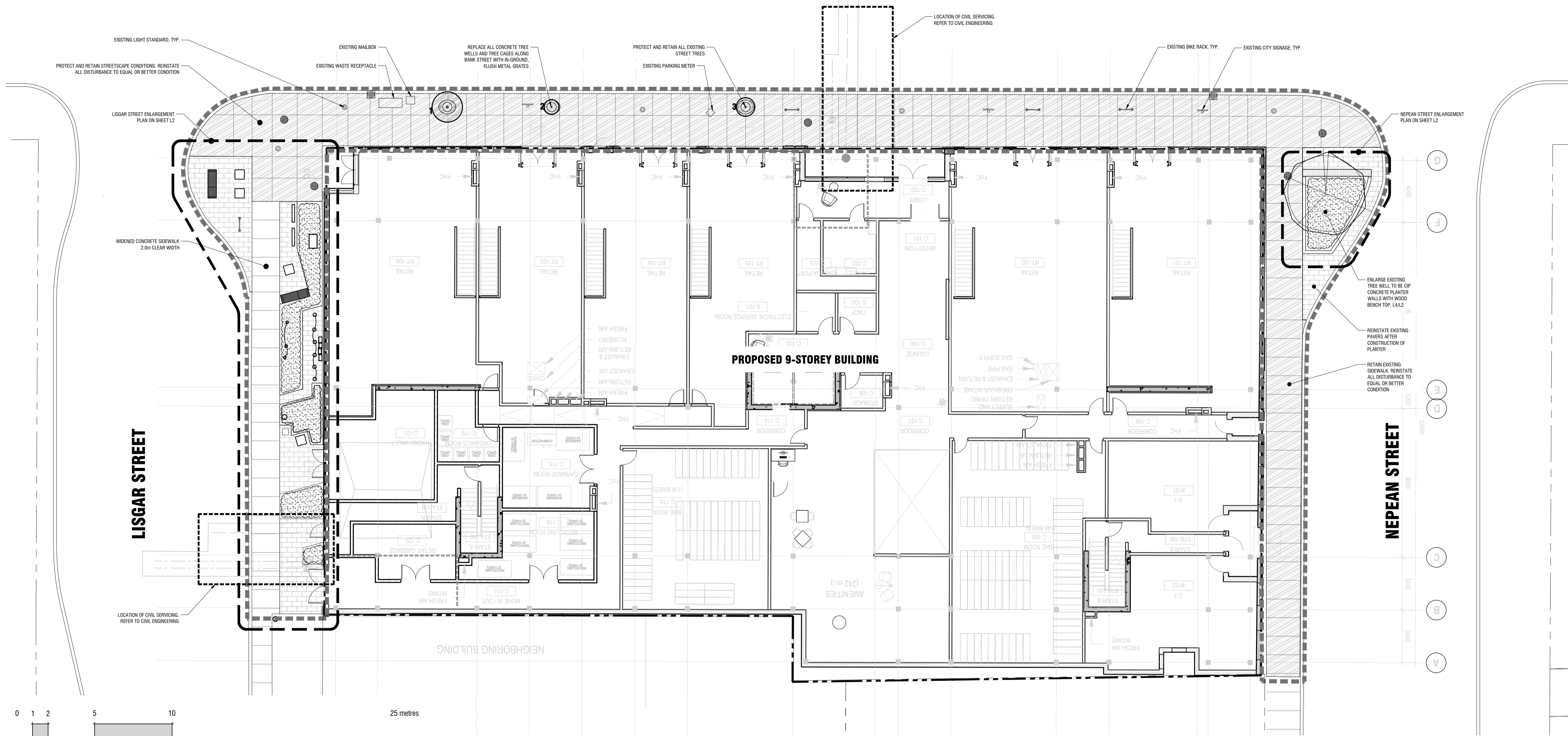


BANK STREET



Copyright Reserved
 The Copyrights to all designs and drawings are the property of Fotenn Consultants Inc. Unauthorized reproduction or use is forbidden. DO NOT SCALE DRAWING
 Copyright réservés
 Les droits d'auteur à tous les modèles et dessins sont la propriété de Fotenn Consultants Inc. Reproduction ou utilisation non autorisée est interdite. NE PAS L'ÉCHELLE DE DESSIN



key plan / plan repère

legend / légende

	LIMIT OF LANDSCAPE WORKS
	PROPERTY LINE
	PLANT KEY
	RETAIN AND PROTECT EXISTING STREETScape
	INDIVIDUAL TREE TO BE PRESERVED. REFER TO NOTES FOR PRESERVATION TECHNIQUES DURING CONSTRUCTION
	CRITICAL ROOT ZONE
	PROPOSED TREE PLANTING
	PLANTING AREA (SHRUBS, GRASSES, AND PERENNIALS)
	UNIT PAVERS

rev'n	description / la description	yyyy/mm/dd
06	coordinated with updated civil and architectural drawings - re-issue for SPA	2024/09/09
05	revised per City comments - re-issue for SPA	2024/08/26
04	revised per City comments - re-issue for SPA	2024/02/05
03	revised per City comments - re-issue for SPA	2023/09/28
02	revised per City comments - re-issue for SPA	2023/07/14
01	issue for SPA	2022/12/15
00	issue for Client review	2022/12/13

FOTENN Planning + Design
 396 Cooper Street, Suite 300
 Ottawa, ON, CANADA K2P 2H7
 613.730.5709
 fotenn.com

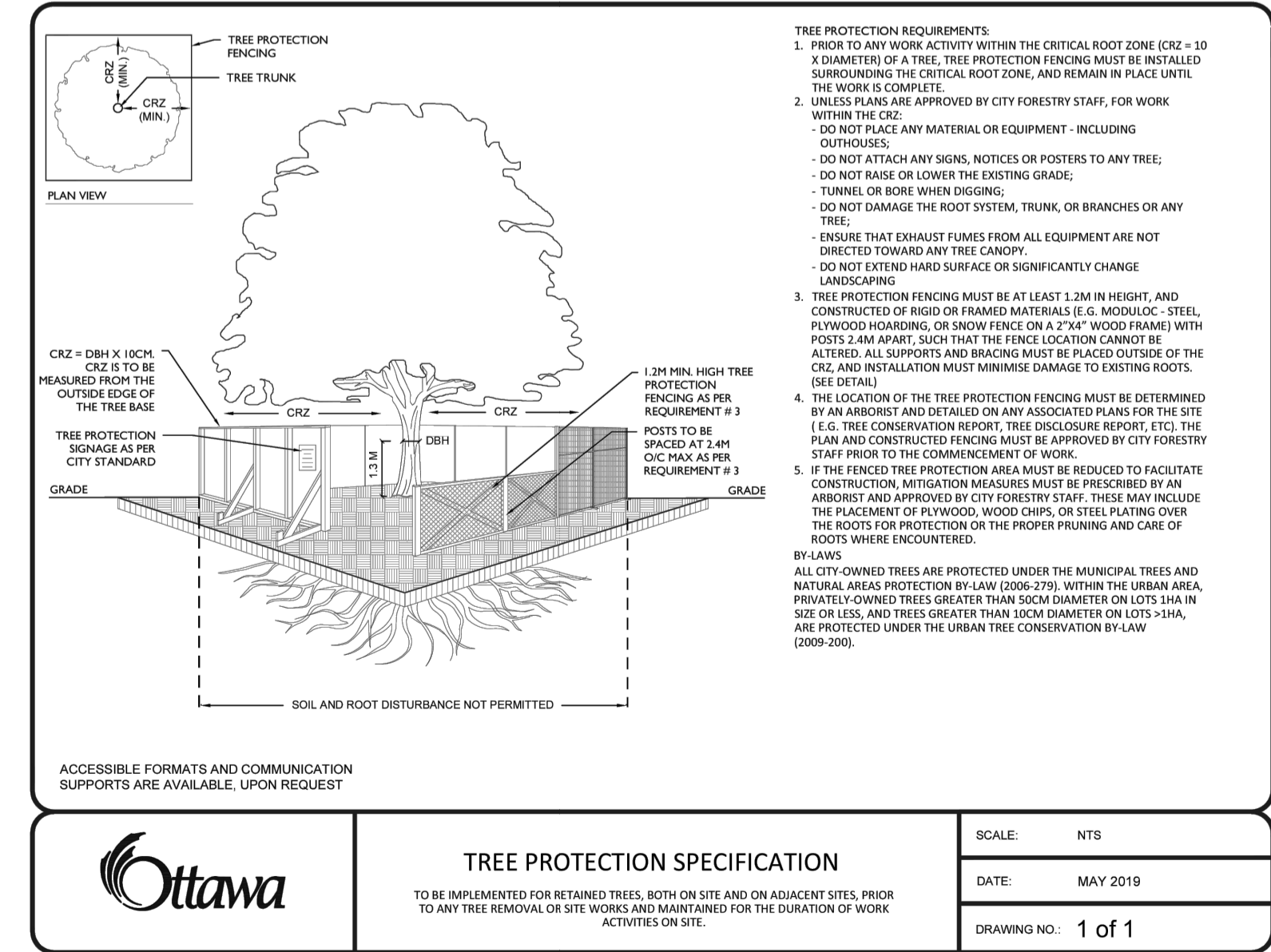
1 LANDSCAPE PLAN L1 1:150

GENERAL NOTES:
 DO NOT SCALE DRAWINGS;
 NOTES ARE APPLICABLE TO ALL DRAWINGS IN THE SET;
 Fotenn Consultants Inc. IS NOT RESPONSIBLE FOR ACCURACY OF BASE INFORMATION;
 REFER TO CIVIL ENGINEERING DRAWINGS FOR GRADING & SITE SERVICING INFORMATION;
 THE CONTRACTOR IS RESPONSIBLE FOR CONFIRMING SITE CONDITIONS AND REPORTING ANY DISCREPANCIES TO THE LANDSCAPE ARCHITECT;
 THE CONTRACTOR IS RESPONSIBLE FOR CONFIRMING EXACT LOCATIONS OF ALL UNDERGROUND SERVICES AND OBTAINING CLEARANCE FROM ALL APPLICABLE UTILITIES. PROPOSED WORKS FOUND TO BE IN CONFLICT WITH UNDERGROUND SERVICES MAY BE ADJUSTED AT THE DIRECTION OF THE LANDSCAPE ARCHITECT;
 LANDSCAPE ELEMENTS SHOWN ARE SUBJECT TO THE FINAL LOCATION OF UNDERGROUND SERVICES AND UTILITIES;
 PERFORM WORK IN ACCORDANCE WITH DETAILS AND SPECIFICATIONS;
 ALL PLANT MATERIAL SHALL BE No. 1 NURSERY STOCK AND SHALL MEET OR EXCEED THE SPECIFICATION OF THE Canadian Standards for Nursery Stock, AS PUBLISHED BY THE Canadian Nursery Landscape Association;
 SPECIES SUBSTITUTIONS ARE NOT PERMITTED WITHOUT PRIOR WRITTEN APPROVAL OF THE LANDSCAPE ARCHITECT;

STANDARDS FOR TREE PLANTING:
 MAINTAIN A MINIMUM DISTANCE OF 2.5m FROM LIGHT STANDARDS;
 MAINTAIN A MINIMUM DISTANCE OF 3.0m FROM ALL HYDRO TRANSFORMERS;
 MAINTAIN A MINIMUM DISTANCE OF 1.0m FROM ALL UNDERGROUND SERVICES;
 MAINTAIN A MINIMUM DISTANCE OF 1.0m FROM ALL BELL AND CABLE BOXES;

IMPORTANT NOTICE FOR CONTRACTOR:
 THE CITY OF OTTAWA REQUIRES A Certificate of Completion (F1) Landscape Works TO BE SUBMITTED AND SEALED BY THE LANDSCAPE ARCHITECT. CONTRACTORS ARE RESPONSIBLE FOR FAMILIARIZING THEMSELVES WITH THE REQUIREMENTS OF THIS PROCESS AND PROVIDING SUFFICIENT NOTICE TO THE LANDSCAPE ARCHITECT TO CONDUCT SITE REVIEWS DURING INSTALLATION OF TREES. THE 1 YEAR WARRANTY PERIOD SHALL NOT COMMENCE UNTIL THE LANDSCAPE ARCHITECT HAS SUBMITTED THE F1 Certificate.
 PRIOR TO INSTALLATION OF TREES, THE DEVELOPER WILL CONTACT THE PLANNING AND GROWTH MANAGEMENT AND FORESTRY SERVICES TO REVIEW THE SPECIES AND LOCATION OF TREES.

**PRELIMINARY
 NOT FOR CONSTRUCTION**



2 CoO STANDARD TREE PROTECTION DETAIL L1 NTS

north / le nord stamp / le cachet

211-231 Bank Street

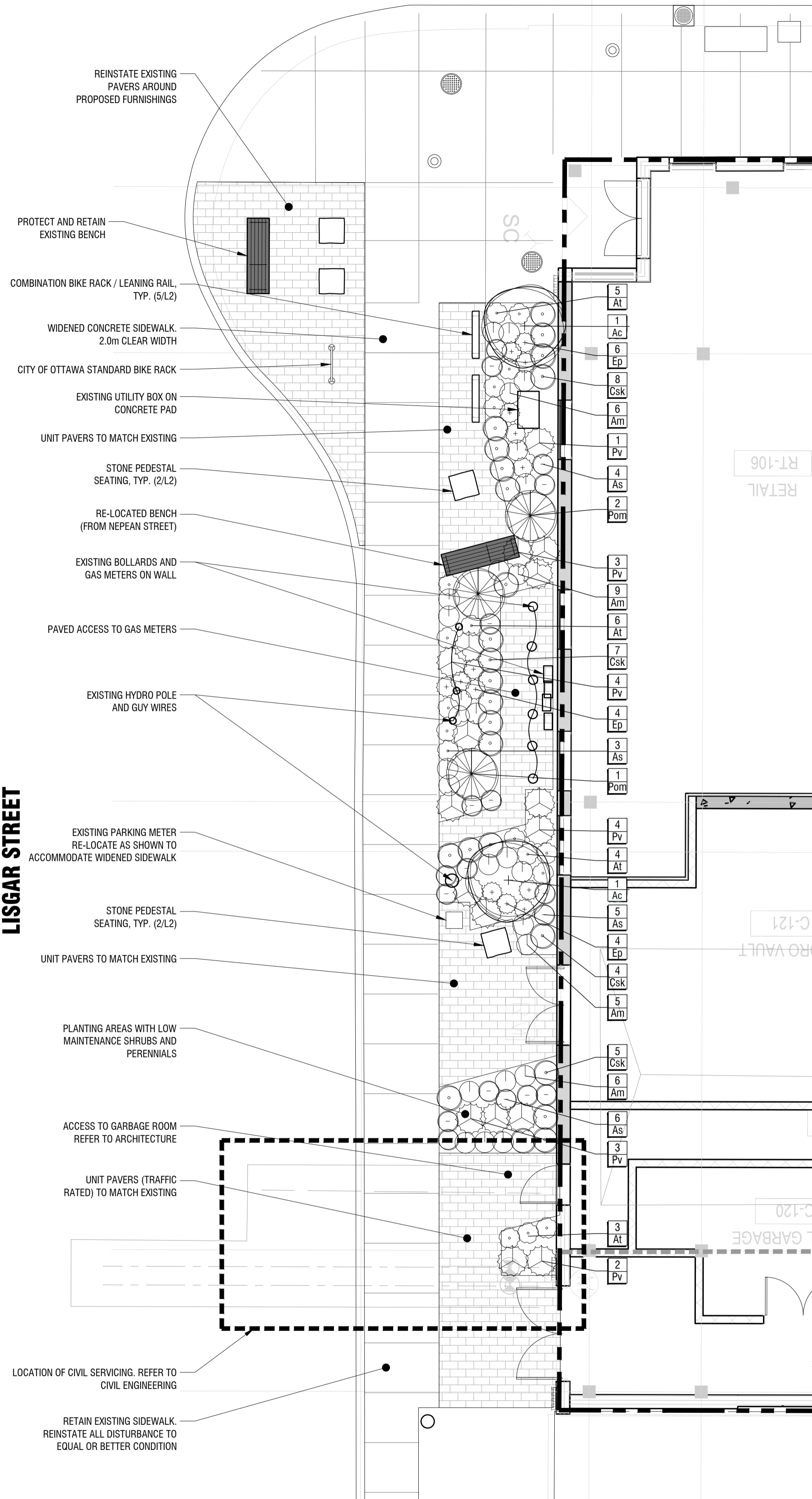
LANDSCAPE PLAN

designed / conçu bm	drawn / dessiné bm	reviewed / examiné DF
date 2022/11/25		
drawing number / No. du projet		

L1 of 2

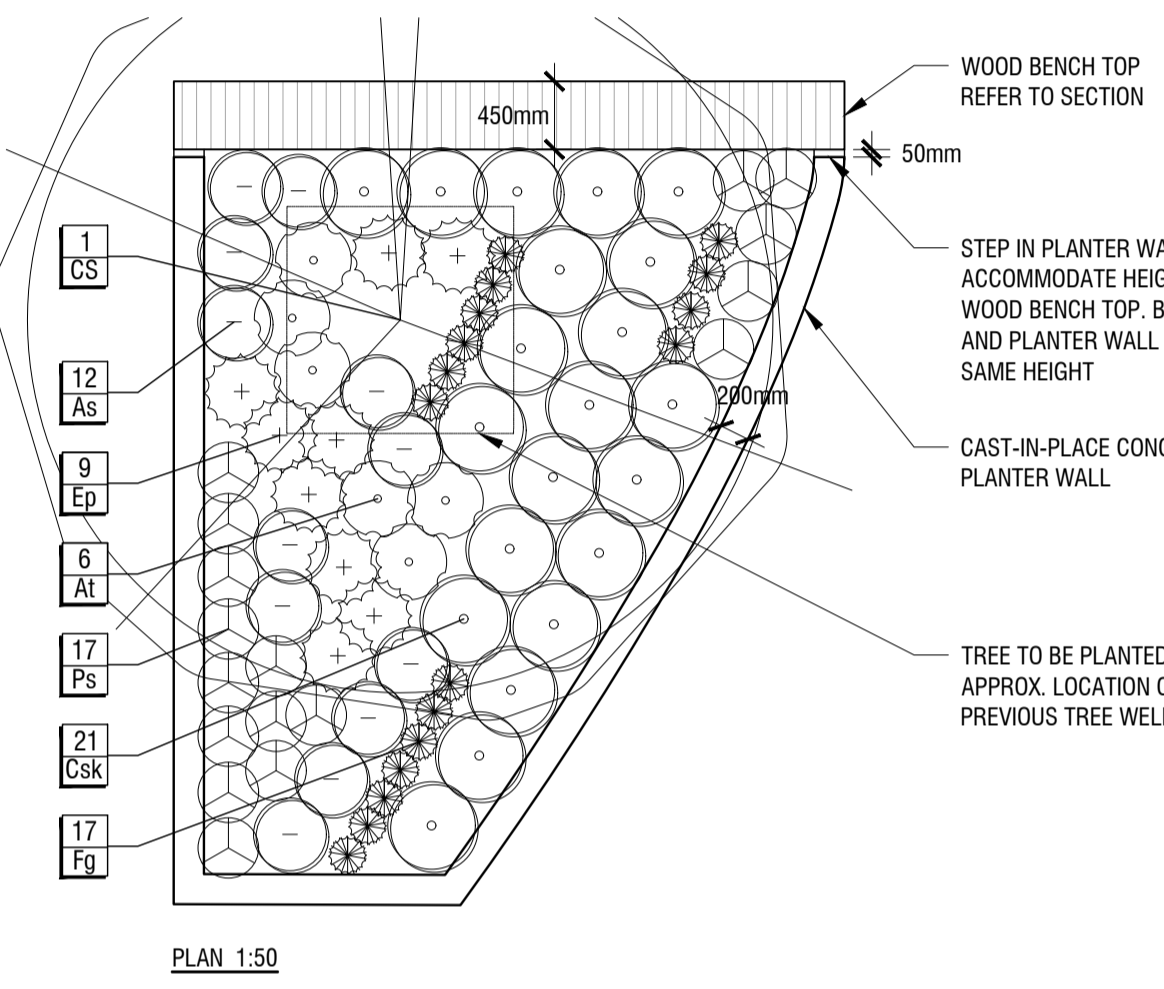
FILE NUMBER 002-02-02-0127 007-12-22-0188

LISGAR STREET

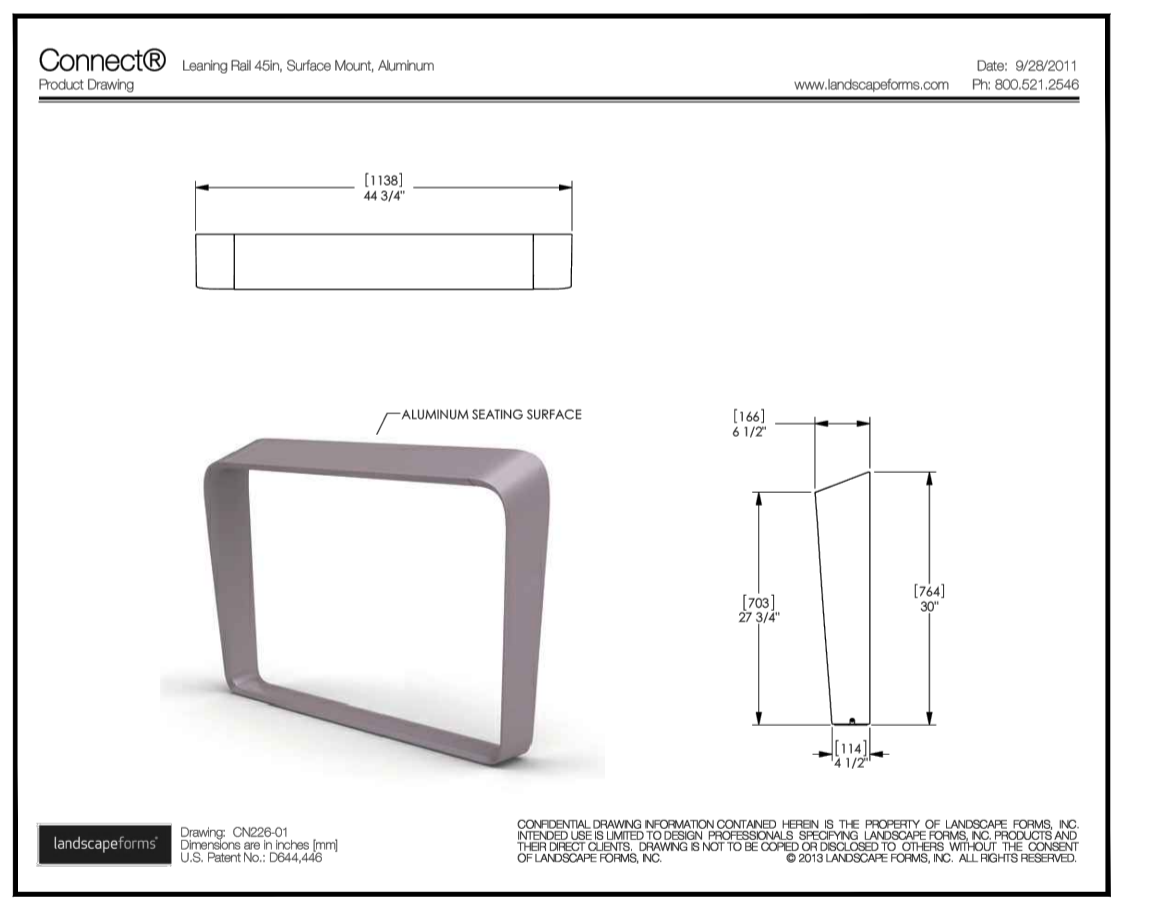


Urban parkette consisting of planting, seating, feature paving, and mural artwork. Designed by Forest and Field Landscape Architecture

2 PARKETTE PRECEDENT IMAGE
L2 No Scale



4 WOOD TOP BENCH ON PLANTER WALL DETAIL AND PLANTING PLAN
L2 AS NOTED



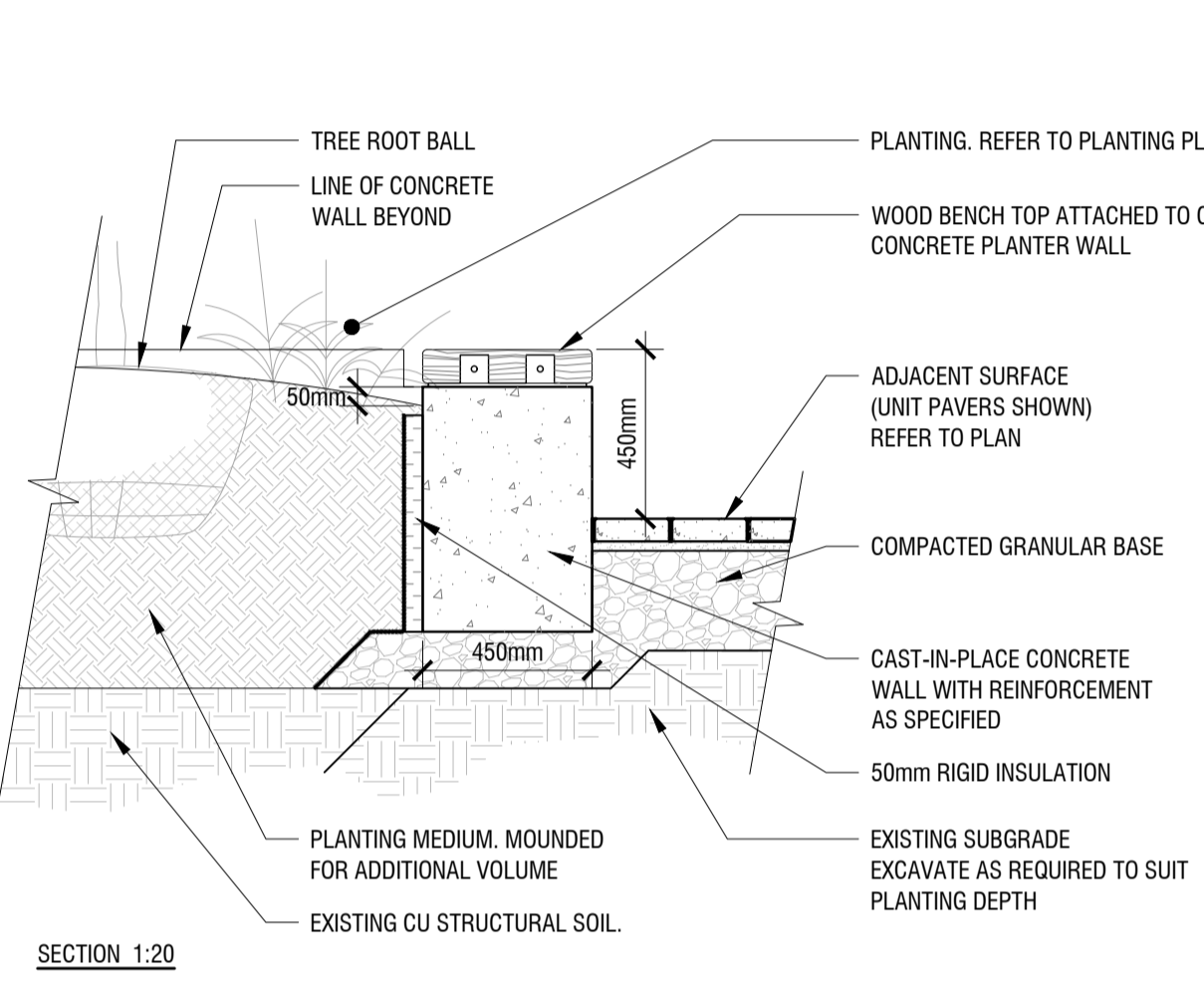
5 LEANING RAIL
L2 N.T.S.

PLANT SCHEDULE

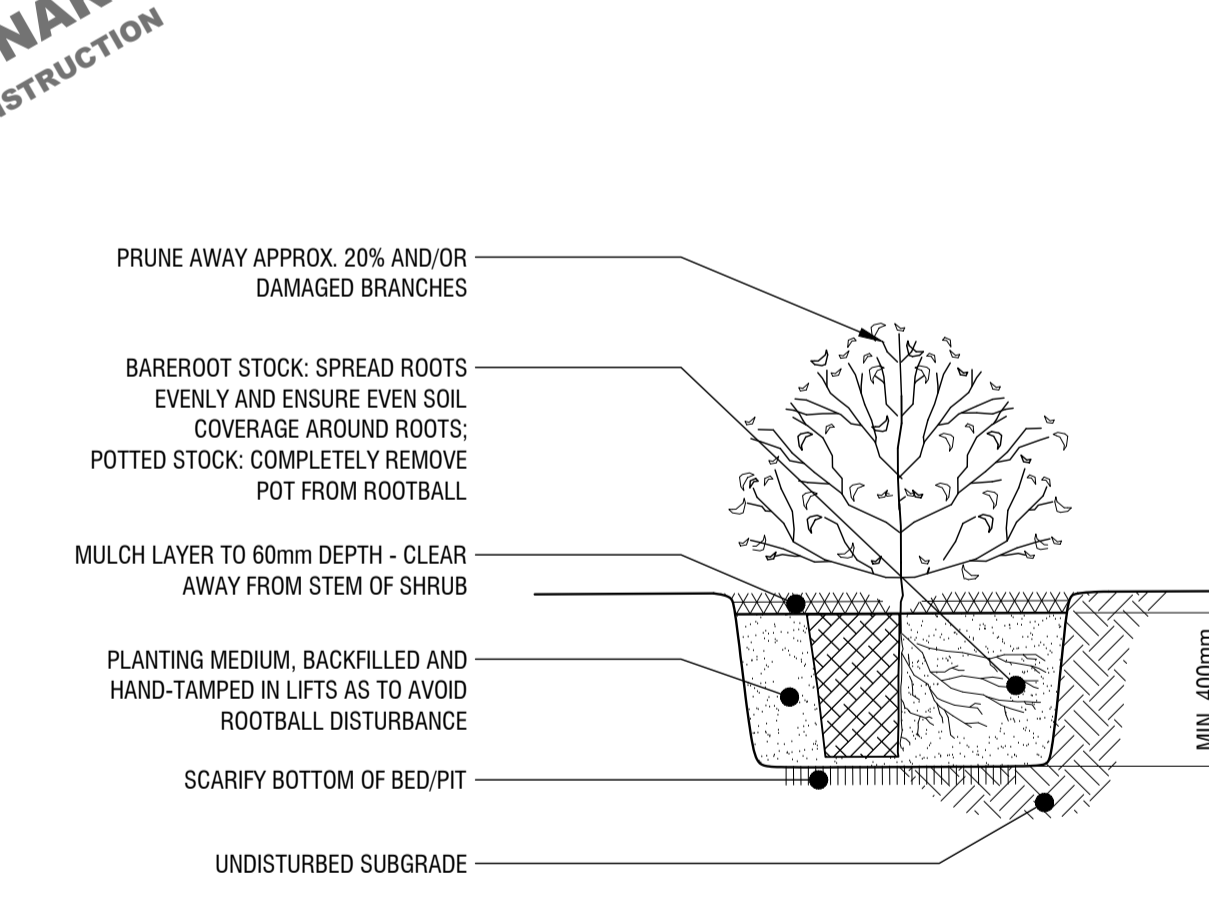
CODE	QTY	BOTANICAL NAME	COMMON NAME	SIZE / CONDITION / SPACING
TREES				
CS	1	Catalpa speciosa	Northern Catalpa	70mm cal. / W.B.
SHRUBS				
Ac	2	Amelanchier canadensis	Canadian Serviceberry	100cm ht. / specimen quality / Refer to plan for spacing
Csk	45	Cornus sericea 'Kelsey'	Kelsey's Dwarf Red Twig Dogwood	30cm ht. / 45cm sp.
Pom	3	Physocarpus opulifolius 'Monro'	Diablo® Purple Ninebark	#3 Pot / Refer to plan for spacing
PERENNIALS & GRASSES				
Am	26	Achillea millefolium	Common Yarrow	#1 Pot / 45cm sp.
At	24	Asclepias tuberosa	Butterfly Milkweed	#1 Pot / 45cm sp.
As	30	Aster laevis 'Bluebird'	Bluebird Smooth Aster	#1 Pot / 45cm sp.
Ep	23	Echinacea purpurea	Coneflower	#1 Pot / 45cm sp.
Fg	17	Festuca glauca	Blue Fescue	#1 Pot / 30cm cp.
Pv	17	Panicum virgatum 'Northwind'	Northwind Switch Grass	#2 Pot / 90cm sp.
Ps	17	Phlox subulata 'Snowflake'	Snowflake Creeping Phlox	#1 Pot / 45cm sp.



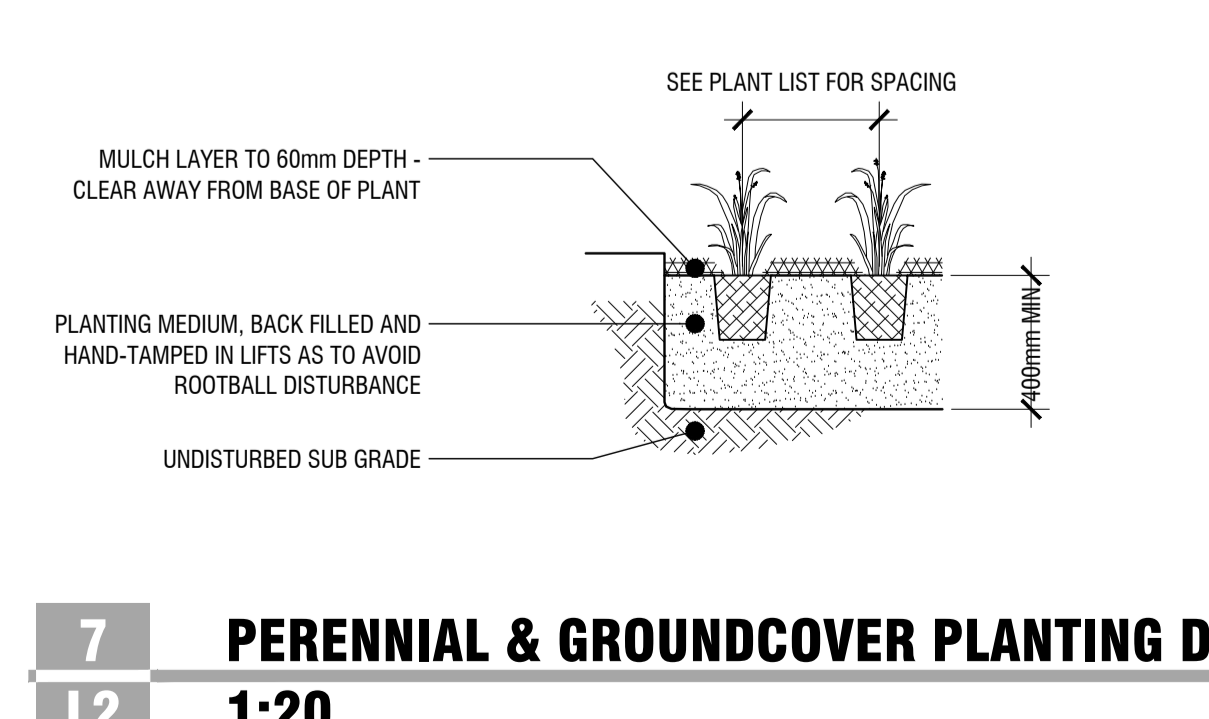
3 STONE PEDESTAL SEATING PRECEDENT
L2 No Scale



6 SHRUB PLANTING DETAIL
L2 1:20

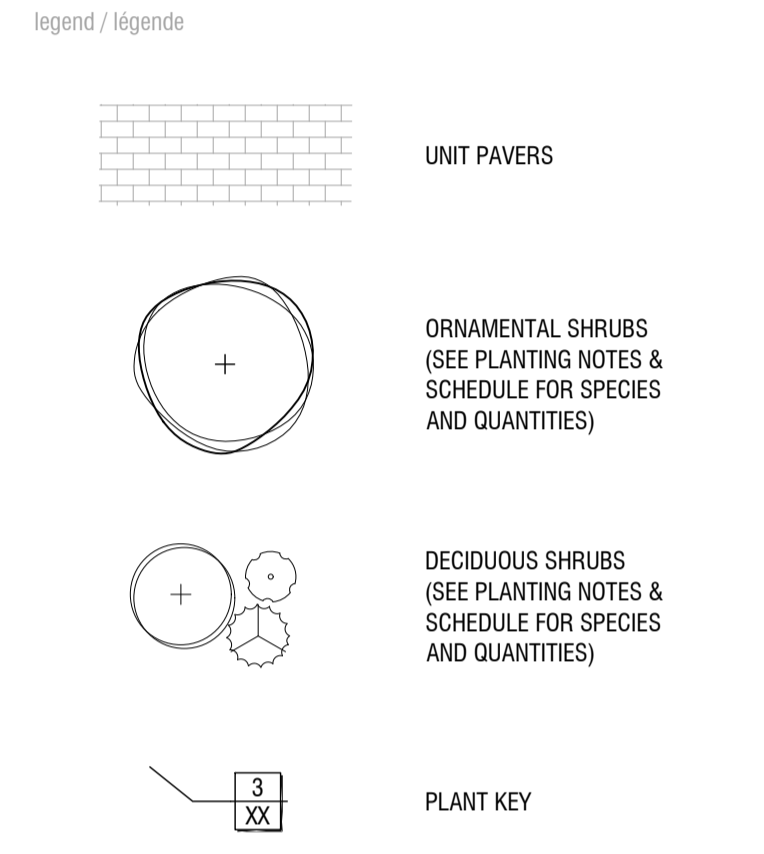
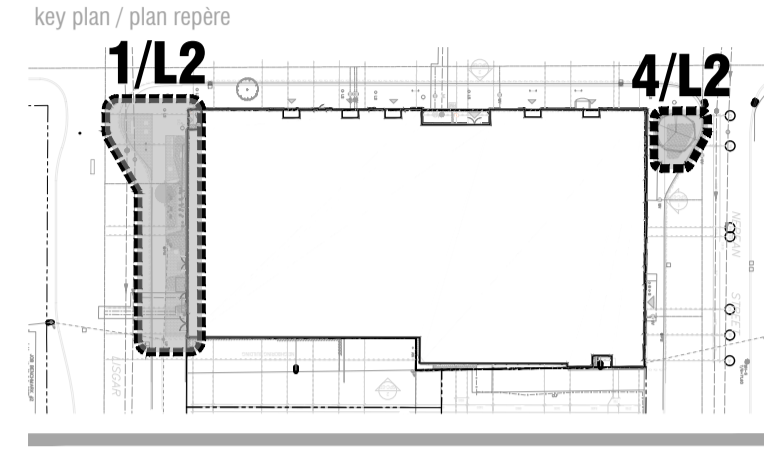


7 PERENNIAL & GROUND COVER PLANTING DETAIL
L2 1:20



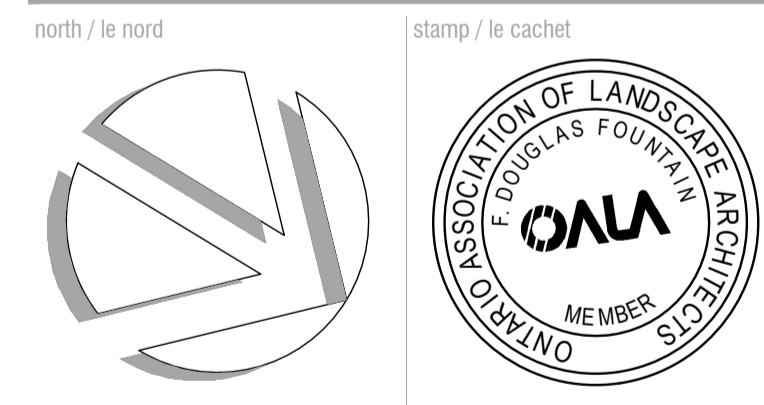
Copyright Reserved
The Copyrights to all designs and drawings are the property of Fotenn Consultants Inc. Unauthorized reproduction or use is forbidden. DO NOT SCALE DRAWING

Copyright réservés
Les droits d'auteur à tous les modèles et dessins sont la propriété de Fotenn Consultants Inc. Reproduction ou utilisation non autorisée est interdite. NE PAS L'ÉCHELLE DE DESSIN



rev'n	description / la description	yyyy/mm/dd
06	coordinated with updated civil and architectural drawings - re-issue for SPA	2024/09/09
05	revised per City comments - re-issue for SPA	2024/08/26
04	revised per City comments - re-issue for SPA	2024/02/05
03	revised per City comments - re-issue for SPA	2023/09/28
02	revised per City comments - re-issue for SPA	2023/07/14
01	issue for SPA	2022/12/15
00	issue for Client review	2022/12/13

FOTENN Planning + Design
396 Cooper Street, Suite 300
Ottawa, ON, CANADA K2P 2H7
613.730.5709
fotenn.com



project / projet

211-231 Bank Street

drawing / dessin

PARKETTE PLAN, PLANTING PLAN AND DETAILS

designed / conçu
bm

drawn / dessiné
bm

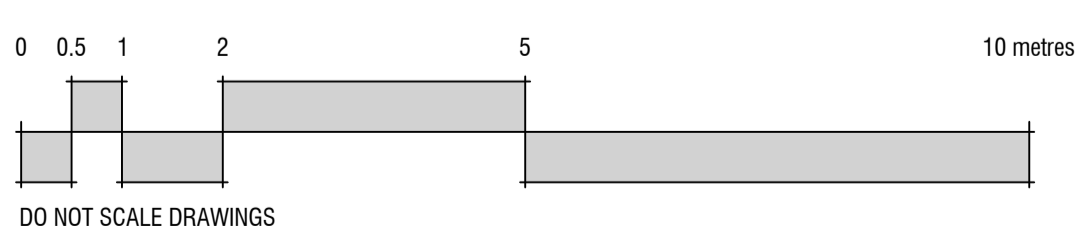
reviewed / examiné
DF

date
2022/11/25

project number / No. du projet

drawing number / No. du dessin

L2 of 2



1 LISGAR PARKETTE DETAIL PLAN
L2 1:75

DO NOT SCALE DRAWINGS

FILE NUMBER DD2-02-22-0127 007-12-22-0188