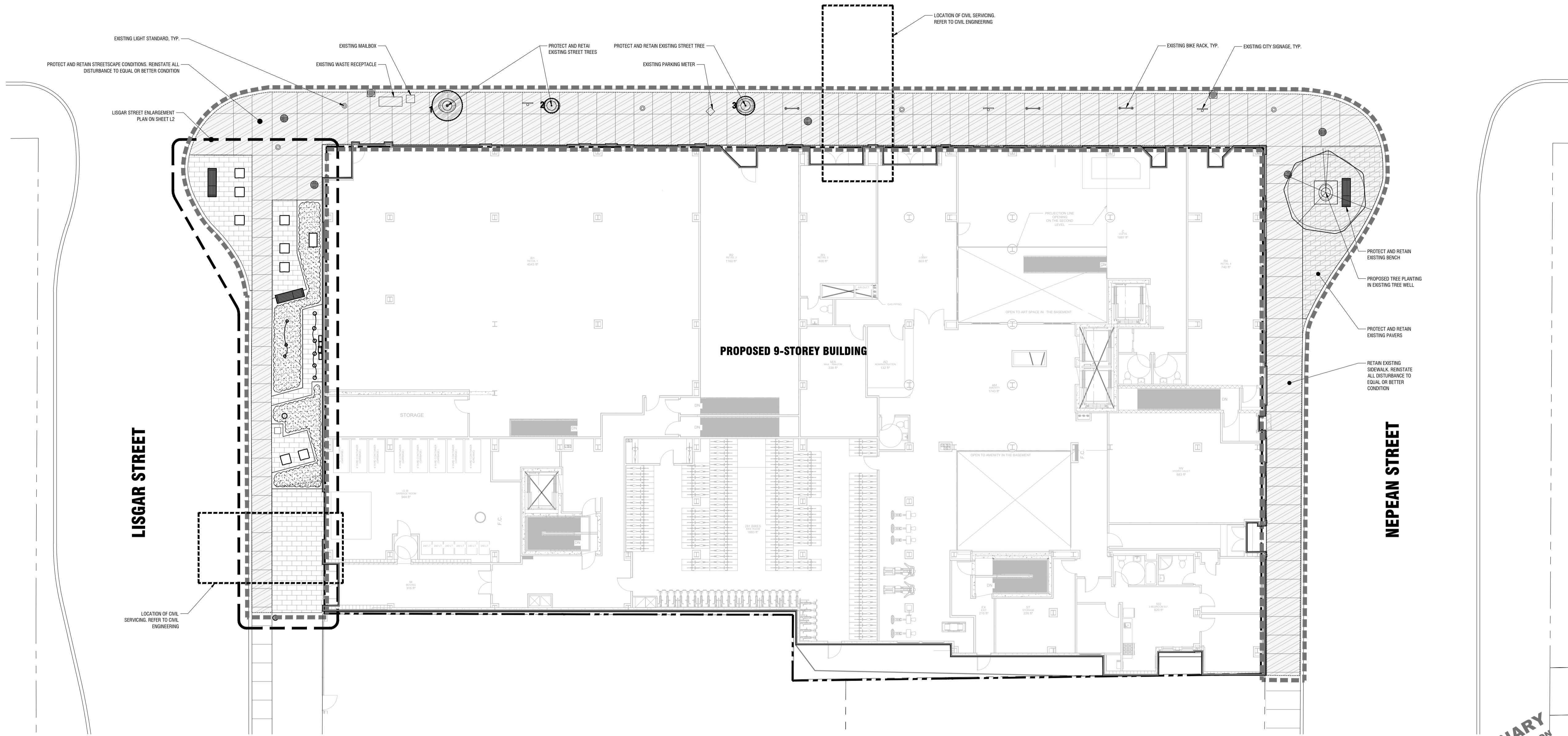


# BANK STREET



Copyright Reserved  
 The Copyrights to all designs and drawings are the property of Fotenn Consultants Inc. Unauthorized reproduction or use is forbidden. DO NOT SCALE DRAWING  
 Copyright réservés  
 Les droits d'auteur à tous les modèles et dessins sont la propriété de Fotenn Consultants Inc. Reproduction ou utilisation non autorisée est interdite. NE PAS L'ÉCHELLE DE DESSIN



Client / Client

key plan / plan repère

legend / légende

- LIMIT OF LANDSCAPE WORKS
- PROPERTY LINE
- PLANT KEY
- RETAIN AND PROTECT EXISTING STREETScape
- INDIVIDUAL TREE TO BE PRESERVED. REFER TO NOTES FOR PRESERVATION TECHNIQUES DURING CONSTRUCTION
- CRITICAL ROOT ZONE
- PROPOSED TREE PLANTING
- PLANTING AREA (SHRUBS, GRASSES, AND PERENNIALS)
- UNIT PAVERS

rev'n	description / la description	yyyy/mm/dd
03	revised per City comments - re-issue for SPA	2023/09/28
02	revised per City comments - re-issue for SPA	2023/07/14
01	issue for SPA	2022/12/15
00	issue for Client review	2022/12/13

**FOTENN Planning + Design**  
 396 Cooper Street, Suite 300  
 Ottawa, ON, CANADA K2P 2H7  
 613.730.5709  
 fotenn.com

north / le nord

stamp / le cachet

project / projet

## 211-231 Bank Street

drawing / dessin

# LANDSCAPE PLAN

designed / conçu <b>bm</b>	drawn / dessiné <b>bm</b>	reviewed / examiné <b>DF</b>
date <b>2022/11/25</b>		
drawing number / No. du projet		

drawing number / No. du dessin

# L1 of 2

## 1 LANDSCAPE PLAN

### L1 1:150

#### GENERAL NOTES:

- DO NOT SCALE DRAWINGS;
- NOTES ARE APPLICABLE TO ALL DRAWINGS IN THE SET;
- Fotenn Consultants Inc. IS NOT RESPONSIBLE FOR ACCURACY OF BASE INFORMATION;
- REFER TO CIVIL ENGINEERING DRAWINGS FOR GRADING & SITE SERVICING INFORMATION;
- THE CONTRACTOR IS RESPONSIBLE FOR CONFIRMING SITE CONDITIONS AND REPORTING ANY DISCREPANCIES TO THE LANDSCAPE ARCHITECT;
- THE CONTRACTOR IS RESPONSIBLE FOR CONFIRMING EXACT LOCATIONS OF ALL UNDERGROUND SERVICES AND OBTAINING CLEARANCE FROM ALL APPLICABLE UTILITIES. PROPOSED WORKS FOUND TO BE IN CONFLICT WITH UNDERGROUND SERVICES MAY BE ADJUSTED AT THE DIRECTION OF THE LANDSCAPE ARCHITECT;
- LANDSCAPE ELEMENTS SHOWN ARE SUBJECT TO THE FINAL LOCATION OF UNDERGROUND SERVICES AND UTILITIES;
- PERFORM WORK IN ACCORDANCE WITH DETAILS AND SPECIFICATIONS;
- ALL PLANT MATERIAL SHALL BE No. 1 NURSERY STOCK AND SHALL MEET OR EXCEED THE SPECIFICATION OF THE Canadian Standards for Nursery Stock, AS PUBLISHED BY THE Canadian Nursery Landscape Association;
- SPECIES SUBSTITUTIONS ARE NOT PERMITTED WITHOUT PRIOR WRITTEN APPROVAL OF THE LANDSCAPE ARCHITECT;

#### STANDARDS FOR TREE PLANTING:

- MAINTAIN A MINIMUM DISTANCE OF 2.5m FROM LIGHT STANDARDS;
- MAINTAIN A MINIMUM DISTANCE OF 3.0m FROM ALL HYDRO TRANSFORMERS;
- MAINTAIN A MINIMUM DISTANCE OF 1.0m FROM ALL UNDERGROUND SERVICES;
- MAINTAIN A MINIMUM DISTANCE OF 1.0m FROM ALL BELL AND CABLE BOXES;

#### IMPORTANT NOTICE FOR CONTRACTOR:

THE CITY OF OTTAWA REQUIRES A Certificate of Completion (F1) Landscape Works TO BE SUBMITTED AND SEALED BY THE LANDSCAPE ARCHITECT. CONTRACTORS ARE RESPONSIBLE FOR FAMILIARIZING THEMSELVES WITH THE REQUIREMENTS OF THIS PROCESS AND PROVIDING SUFFICIENT NOTICE TO THE LANDSCAPE ARCHITECT TO CONDUCT SITE REVIEWS **DURING INSTALLATION** OF TREES. THE 1 YEAR WARRANTY PERIOD SHALL NOT COMMENCE UNTIL THE LANDSCAPE ARCHITECT HAS SUBMITTED THE F1 Certificate.

PRIOR TO INSTALLATION OF TREES, THE DEVELOPER WILL CONTACT THE PLANNING AND GROWTH MANAGEMENT AND FORESTRY SERVICES TO REVIEW THE SPECIES AND LOCATION OF TREES.

**TREE PROTECTION SPECIFICATION**

TO BE IMPLEMENTED FOR RETAINED TREES, BOTH ON SITE AND ON ADJACENT SITES, PRIOR TO ANY TREE REMOVAL OR SITE WORKS AND MAINTAINED FOR THE DURATION OF WORK ACTIVITIES ON SITE.

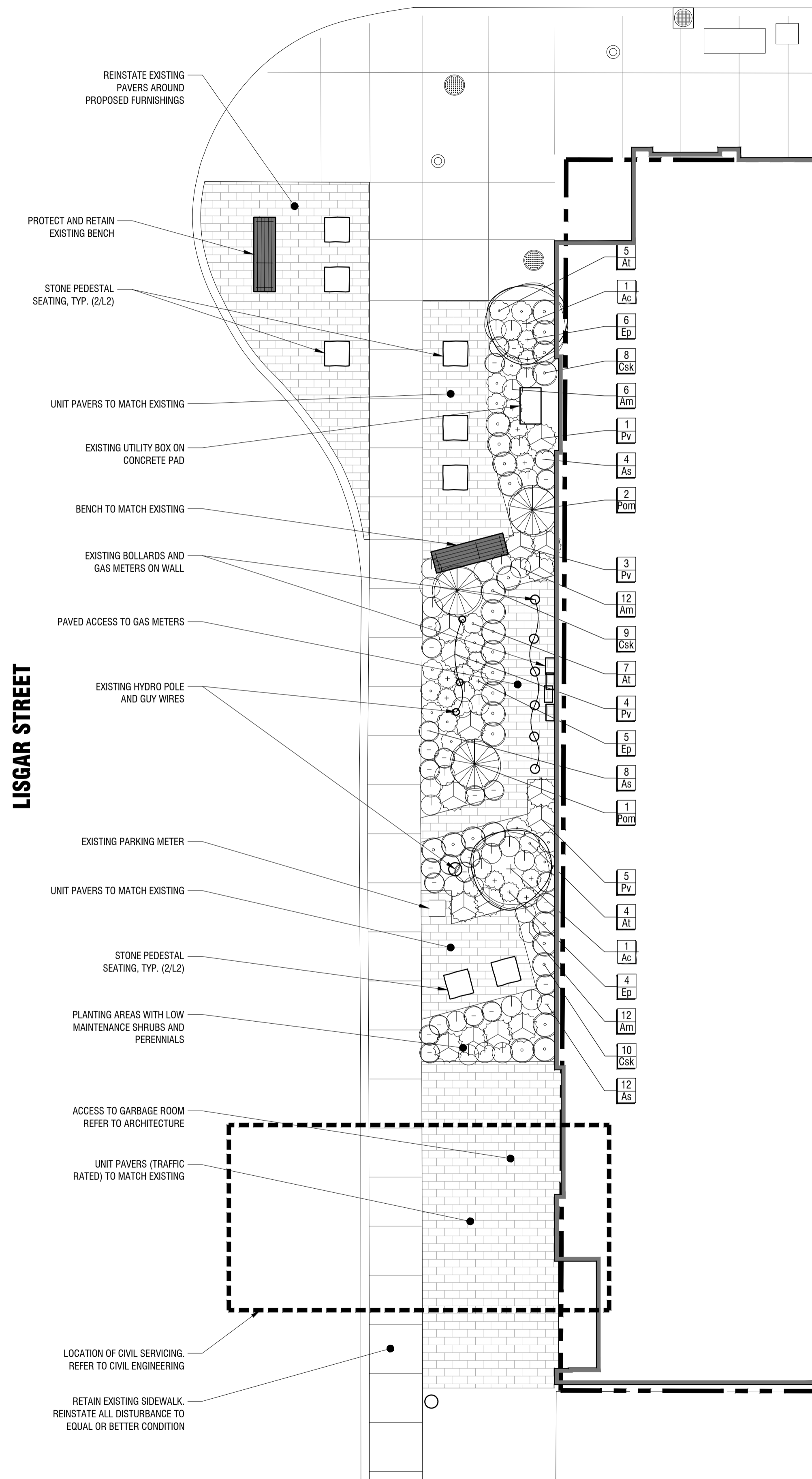
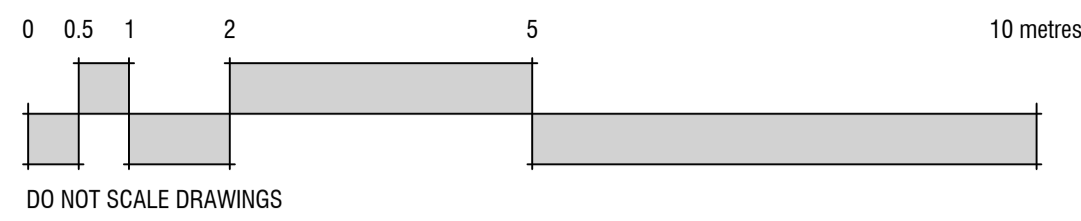
SCALE: NTS  
 DATE: MAY 2019  
 DRAWING NO.: 1 of 1

## 2 CoO STANDARD TREE PROTECTION DETAIL

### L1 NTS

PLOT INFORMATION: DWG NAME: P:\PROJECTS\SmartLiving Properties\211 - 231 Bank Street\_Landscape\5 DESIGN DEVELOPMENT\1 LANDSCAPE\211 Bank Street.dwg PLOT DATE: 2023-09-28 11:39:28 AM SHEET SIZE: ISO (A1) (841.00 MM) PLOTTED BY: Beniam Mihalac LAST SAVED BY: beniam





**1 LISGAR PARKETTE DETAIL PLAN**  
L2 1:75

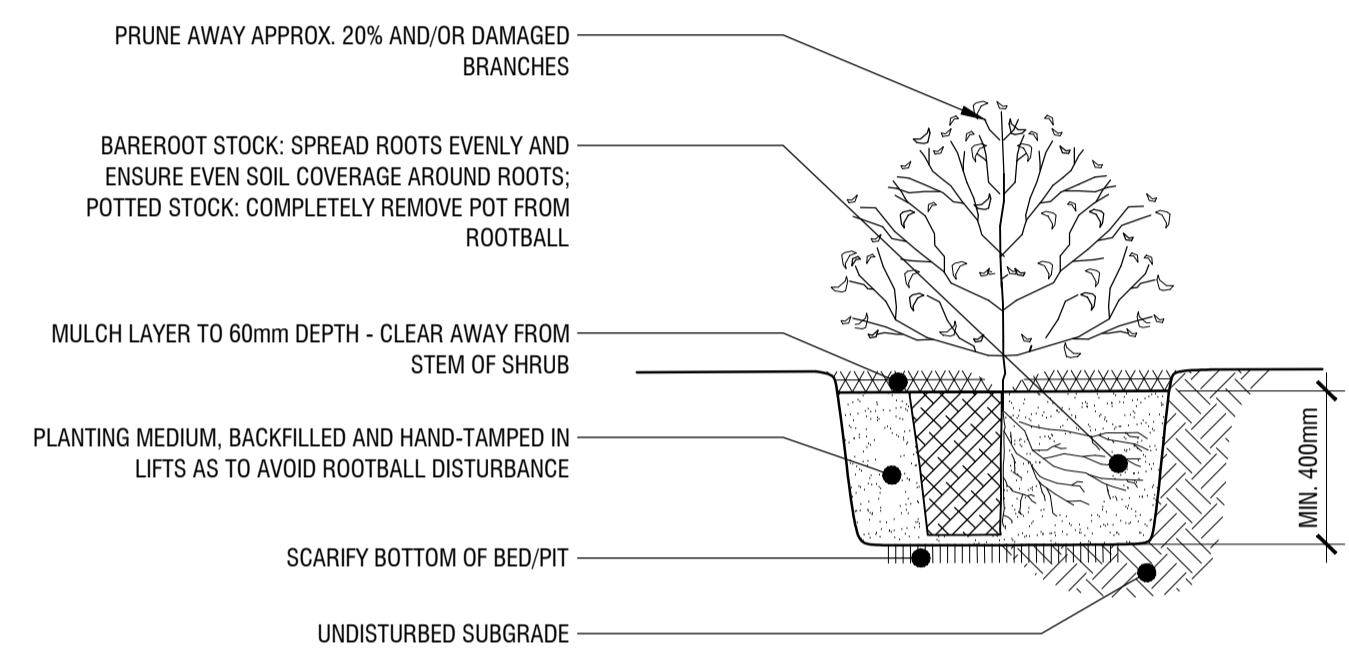
PLANT SCHEDULE				
TREES	QTY	BOTANICAL NAME	COMMON NAME	SIZE / CONDITION / SPACING
GS	1	Catalpa speciosa	Northern Catalpa	70mm cal. / W.B.
SHRUBS	QTY	BOTANICAL NAME	COMMON NAME	SIZE / CONDITION / SPACING
Ac	4	Amelanchier canadensis	Canadian Serviceberry	100cm ht. / specimen quality / 2.0m sp.
Csk	32	Cornus sericea 'Kelsey'	Kelsey's Dwarf Red Twig Dogwood	30cm ht. / 45cm sp.
Pom	3	Physocarpus opulifolius 'Monro'	Diablo® Purple Ninebark	#3 Pot / Refer to plan for spacing
PERENNIALS & GRASSES	QTY	BOTANICAL NAME	COMMON NAME	SIZE / CONDITION / SPACING
Am	37	Achillea millefolium	Common Yarrow	#1 Pot / 45cm sp.
At	25	Asclepias tuberosa	Butterfly Milkweed	#1 Pot / 45cm sp.
As	34	Aster laevis 'Bluebird'	Bluebird Smooth Aster	#1 Pot / 45cm sp.
Ep	21	Echinacea purpurea	Coneflower	#1 Pot / 45cm sp.
Pv	15	Panicum virgatum 'Northwind'	Northwind Switch Grass	#2 Pot / 90cm sp.



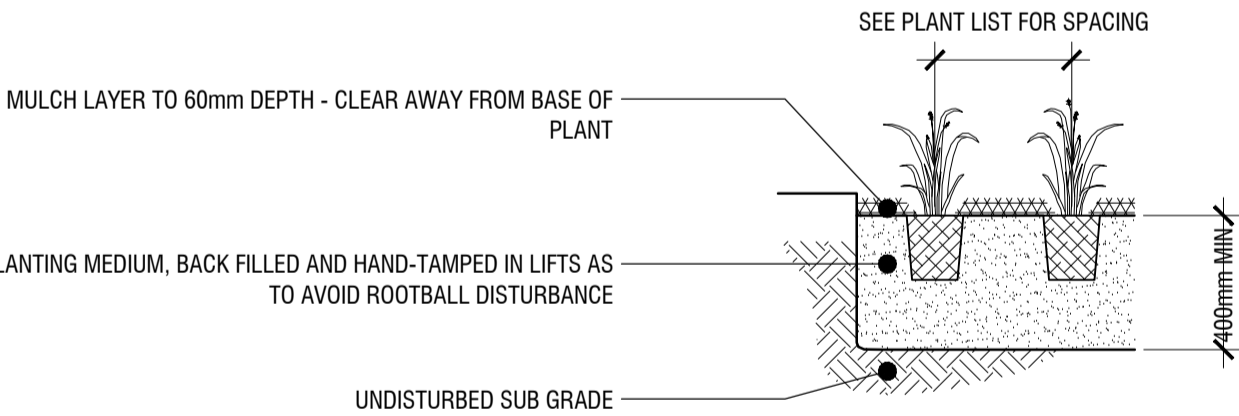
**2 PARKETTE PRECEDENT IMAGE**  
L2 No Scale



**3 STONE PEDESTAL SEATING PRECEDENT**  
L2 No Scale

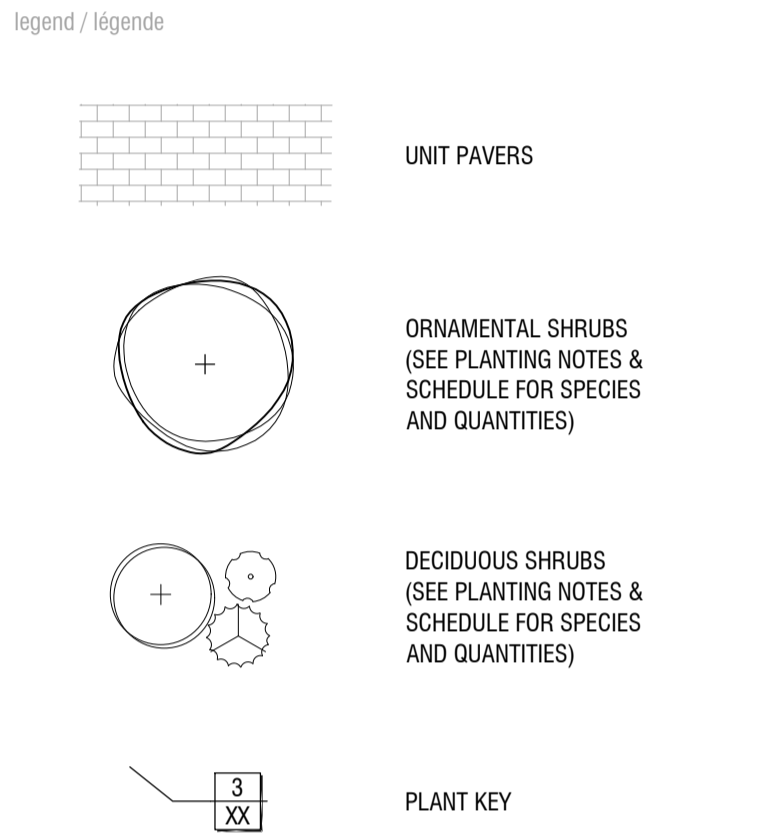
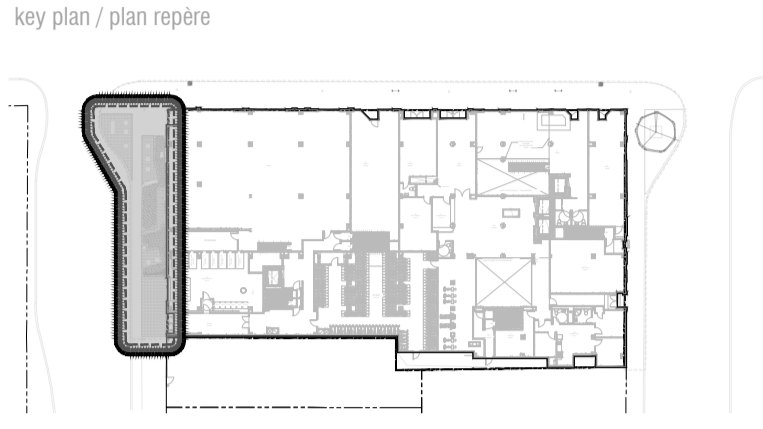


**4 SHRUB PLANTING DETAIL**  
L2 1:20



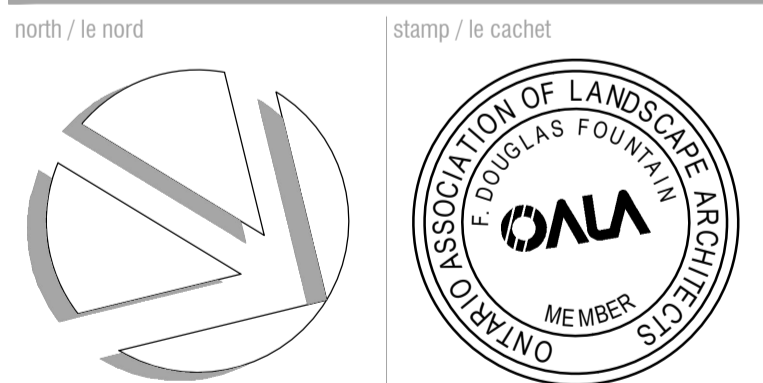
**5 PERENNIAL AND GROUNDCOVER PLANTING DETAIL**  
L2 1:20

Copyright Reserved  
The Copyrights to all designs and drawings are the property of Fotenn Consultants Inc. Unauthorized reproduction or use is forbidden. DO NOT SCALE DRAWING  
Copyright réservés  
Les droits d'auteur à tous les modèles et dessins sont la propriété de Fotenn Consultants Inc. Reproduction ou utilisation non autorisée est interdite. NE PAS L'ÉCHELLE DE DESSIN



rev'n	description / la description	yyyy/mm/dd
03	revised per City comments - re-issue for SPA	2023/09/28
02	revised per City comments - re-issue for SPA	2023/07/14
01	issue for SPA	2022/12/15
00	issue for Client review	2022/12/13

**FOTENN Planning + Design**  
396 Cooper Street, Suite 300  
Ottawa, ON, CANADA K2P 2H7  
613.730.5709  
fotenn.com



project / projet  
**211-231 Bank Street**

drawing / dessin  
**PARKETTE PLAN, PLANTING PLAN AND DETAILS**

designed / conçu	drawn / dessiné	reviewed / examiné
<b>bm</b>	<b>bm</b>	<b>DF</b>
date	project number / No. du projet	
<b>2022/11/25</b>		

drawing number / No. du dessin  
**L2 of 2**

**PRELIMINARY**  
NOT FOR CONSTRUCTION

PLOT INFORMATION: DWG NAME: P:\PROJECTS\Structural\Proposed211 - 231 Bank Street\_Landscape 5 DESIGN DEVELOPMENT\PLANS\Proposed211 - 231 Bank Street\_Landscape 5 DESIGN DEVELOPMENT.dwg PLOT DATE: 2023-09-28 11:40:46 AM SHEET SIZE: ISO (A1) (841.0x1189.0 MM) PLOTTED BY: Beniam Mihalac LAST SAVED BY: benmihal