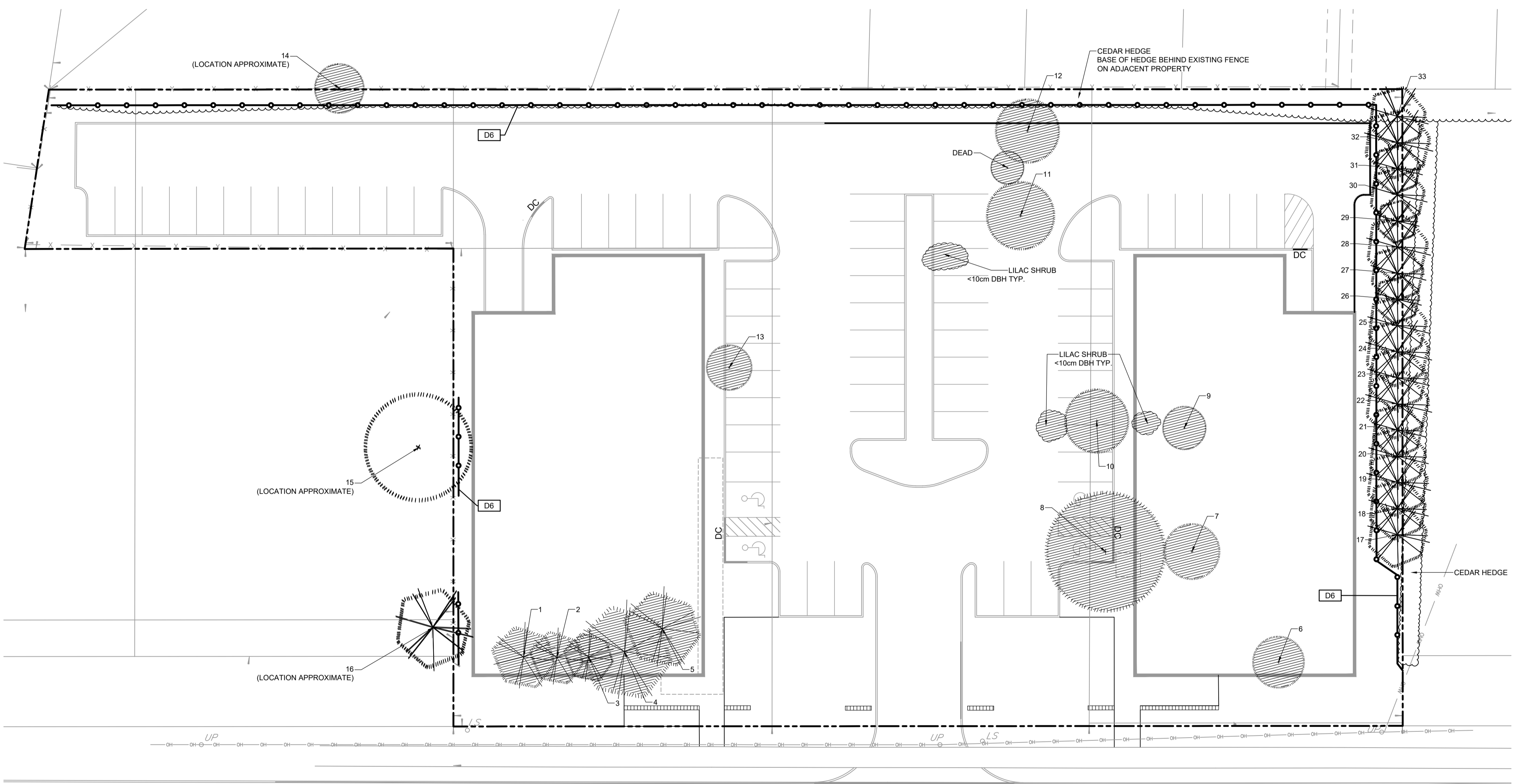


- LEGEND**
- EXISTING TREE TO BE RETAINED, SYMBOL SIZE REFLECTS CRZ
 - EXISTING TREE TO BE REMOVED, SYMBOL SIZE REFLECTS CRZ
 - TREE PROTECTION FENCE
 - PROPOSED BUILDING
- TREE PROTECTION**
- Implement the following protection measures for retained trees, both on site and on adjacent sites, prior to any work activity, including tree removal. Maintain tree protection fence in place and in good condition for the duration of site works:
- The Landscape Architect or Certified Arborist is to determine the location of the tree protection fencing and detail it on any associated plans for the site (e.g. tree conservation report, tree disclosure report, etc.).
 - Under the guidance of a Landscape Architect or Certified Arborist, erect a fence at the critical root zone (CRZ) of trees. Diameter at breast height (DBH) is the trunk diameter measured at 1.3m height on the tree trunk. The CRZ is calculated as DBH x 10. Refer to the Tree Protection Fence detail.
 - Refer to the Tree Protection Plan for fence location. City Forestry Staff are to approve both the plan and the installed fence prior to work commencement.
 - Do not place any material or equipment within 2m of the CRZ of any tree, including outhouses.
 - Do not attach any signs, notices, or posters to any tree.
 - Do not disturb, raise, or lower the existing grade within the CRZ without approval.
 - Only tunnel or bore when digging within the CRZ of a tree. Hand work only where required within the CRZ; absolutely no machinery permitted.
 - Do not damage the root system, trunk, or branches, or any tree.
 - Do not extend hard surface or significantly change landscaping.
 - Ensure that exhaust fumes from all equipment are directed away from any tree canopy.
 - When trees marked for removal overlap with the CRZ of trees marked for preservation: cut roots at the edge of the CRZ and grind down stumps after tree removals, do not pull out stumps. Ensure there is no root pulling or disturbance of the ground within the CRZ.
 - Only work taking place, notify and consult the Landscape Architect and City Forestry Staff if roots must be cut. Roots 20mm or larger should be cut at right angles with clean, sharp horticultural tools without tearing, crushing, or pulling. Refer to City of Ottawa Specification S.P. F-8011 Tree Protection, Excavation of Root Zone.
 - If damaged or objectionable branches are observed, consult the Landscape Architect, before any work is conducted. Do not prune leaders. Do not prune more than 1/4 of crown.
 - Set up a water and fertilizing program, if trees are being affected by site works, to the satisfaction of the Landscape Architect.
 - The Landscape Architect is to prescribe mitigation measures if the protected fenced area must be reduced to facilitate construction. Measures may include the placement of plywood, wood chips, or steel plating over the roots for protection. City Forestry Staff are to approve said measures prior to fence movement.
 - City of Ottawa By-law: Protects municipal trees and municipal natural areas in the City of Ottawa and trees on private property in the urban area of the City of Ottawa (2020-340).

- GENERAL**
- Read and interpret this drawing/drawing set in conjunction with all the contract details and specifications, including related civil, utility, structural, architectural, mechanical, electrical, environmental, geotechnical, and survey information.
 - The Contractor is to determine the exact location, size, material, and elevation of all existing utilities prior to commencing construction. Protect and assume responsibility for all existing utilities regardless of being shown on the drawings.
 - It is essential to use the plans and details in conjunction with the specifications and notes.
 - Do not scale drawings. Work to dimensions only.
 - Reinstate all areas and items damaged or disturbed, beyond the Limit of Work, because of construction activities, including but not limited to construction staging areas, haul roads, stockpile areas, etc. to the satisfaction of the Consultant. Unless otherwise noted, Contractor is to reinstate all areas to pre-construction condition or better to the satisfaction of the Contract Administrator.

- NOVATECH DETAILS**
- D6. Tree Protection Fence



EXISTING TREE INVENTORY

No.	Botanical Name	Common Name	DBH (cm)	CRZ (m)	Condition	Owner	Remarks	Recomm.
1	<i>Pinus strobus</i>	Scott's Pine	28	2.8	G/F	Client	1.5m above multistem, thin canopy	Remove
2	<i>Pinus strobus</i>	Scott's Pine	24	2.4	G/F	Client	Thin canopy	Remove
3	<i>Taxus sp.</i>	Few	22	2.2	G	Client		Remove
4	<i>Picea glauca</i>	White Spruce	42	4.2	G	Client	Multistem	Remove
5	<i>Picea glauca</i>	White Spruce	34	3.4	G	Client		Remove
6	<i>Acer rubrum</i>	Red Maple	25	2.5	F	Client	Salt spray damage, witch's broom	Remove
7	<i>Acer platanoides</i>	Norway Maple	27	2.7	P	Client	IR dead branches, multistem, discoloration, punk knots	Remove
8	<i>Acer platanoides</i>	Norway Maple	58	5.8	P	Client	Barkeling, darkface wound, major seam with internal rot, multiple bark seams	Remove
9	<i>Acer platanoides</i>	Norway Maple	21	2.1	P	Client	Multistem	Remove
10	<i>Acer platanoides</i>	Norway Maple	31	3.1	F	Client	Low vigour, lean	Remove
11	<i>Malus sp.</i>	Apple	33	3.3	P	Client	Darkface scars, pruned limbs healing poorly	Remove
12	<i>Malus sp.</i>	Apple	31	3.1	P	Client	Seam, open wounds	Remove
13	<i>Acer negundo</i>	Manitoba Maple	22	2.2	P	Client	Darkface scar, pruned limbs healing poorly, multistem, punk knots	Remove
14	<i>Acer negundo</i>	Manitoba Maple	24	2.4	F	Boundary Tree	The complete tree canopy extends at an angle over the proposed pavement. Severe lean (> 45°). This Manitoba maple tree is susceptible to tipping in future and pose a significant risk. Therefore it is recommended to remove this poorly shaped tree.	Remove
15	<i>Tilia americana</i>	Basswood	52	5.2	G	Private on adjoining site	Multistem, a seam where two stems meet	PROTECT
16	<i>Thuja occidentalis</i>	White Cedar	35	3.5	G	Private on adjoining site		PROTECT
17	<i>Pinus resinosa</i>	Red Pine	28	2.8	G	Boundary Tree		PROTECT
18	<i>Pinus resinosa</i>	Red Pine	27	2.7	G	Boundary Tree		PROTECT
19	<i>Pinus resinosa</i>	Red Pine	29	2.9	G	Boundary Tree		PROTECT
20	<i>Pinus resinosa</i>	Red Pine	27	2.7	G	Boundary Tree		PROTECT
21	<i>Pinus resinosa</i>	Red Pine	24	2.4	G	Boundary Tree	Multistem	PROTECT
22	<i>Pinus resinosa</i>	Red Pine	30	3.0	G	Boundary Tree		PROTECT
23	<i>Pinus resinosa</i>	Red Pine	28	2.8	G	Boundary Tree		PROTECT
24	<i>Pinus resinosa</i>	Red Pine	30	3.0	G	Boundary Tree		PROTECT
25	<i>Pinus resinosa</i>	Red Pine	28	2.8	G	Boundary Tree		PROTECT
26	<i>Pinus resinosa</i>	Red Pine	21	2.1	G	Boundary Tree		PROTECT
27	<i>Pinus resinosa</i>	Red Pine	25	2.5	G	Boundary Tree		PROTECT
28	<i>Pinus resinosa</i>	Red Pine	29	2.9	G	Boundary Tree		PROTECT
29	<i>Pinus resinosa</i>	Red Pine	19	1.9	G	Boundary Tree		PROTECT
30	<i>Pinus resinosa</i>	Red Pine	26	2.6	G	Boundary Tree		PROTECT
31	<i>Pinus resinosa</i>	Red Pine	22	2.2	G	Boundary Tree		PROTECT
32	<i>Pinus resinosa</i>	Red Pine	31	3.1	G	Boundary Tree		PROTECT
33	<i>Pinus resinosa</i>	Red Pine	27	2.7	G	Boundary Tree		PROTECT

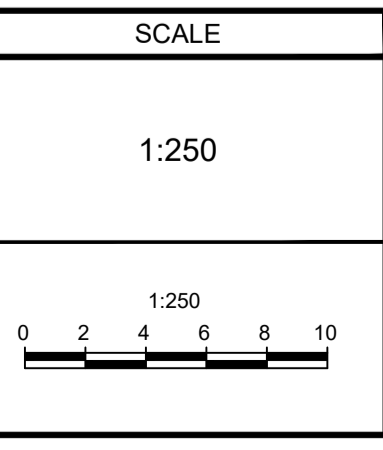
NOTE:
THE POSITION OF ALL POLE LINES, CONDUITS, WATERMANS, SEWERS AND OTHER UNDERGROUND AND OVERGROUND UTILITIES AND STRUCTURES IS NOT NECESSARILY SHOWN ON THE CONTRACT DRAWINGS, AND WHERE SHOWN, THE ACCURACY OF THE POSITION OF SUCH UTILITIES AND STRUCTURES IS NOT GUARANTEED. BEFORE STARTING WORK, DETERMINE THE EXACT LOCATION OF ALL SUCH UTILITIES AND STRUCTURES AND ASSUME ALL LIABILITY FOR DAMAGE TO THEM.

NOT FOR CONSTRUCTION

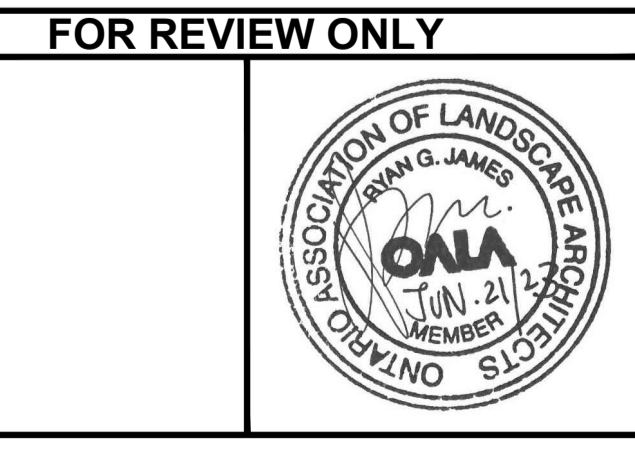
OWNER INFORMATION
6587712 CANADA INC.
1085 BOULEVARD DE LA CARRIERE,
GATINEAU, QUEBEC, J8Y 6V4

VALÉRIE LAPENSÉE
PHONE: (819) 664-4306
EMAIL: valerie@matelapensee.ca

No.	REVISION	DATE	BY
2.	REVISED PER CITY COMMENTS	JUN 21/23	RJ
1.	ISSUED FOR SITE PLAN APPROVAL	DEC 22/22	JP



DESIGN	TB
CHECKED	RJ
DRAWN	TB
CHECKED	RJ
APPROVED	RJ



NOVATECH
Engineers, Planners & Landscape Architects
Suite 200, 240 Michael Cowpland Drive
Ottawa, Ontario, Canada K2M 1P6

Telephone (613) 254-9643
Facsimile (613) 254-5867
Website www.novatech-eng.com

LOCATION		PROJECT No.	
CITY OF OTTAWA 3493 - 3499 INNES ROAD		118204	
DRAWING NAME		REV #	
TREE CONSERVATION PLAN		REV # 2	
PROJECT No.		DRAWING No.	
118204-TCR		118204-TCR	

C:\temp\p\publish_0408118204_L\0408118204_TCR_Jun 21, 2023 - 10:12am.tbaskale

