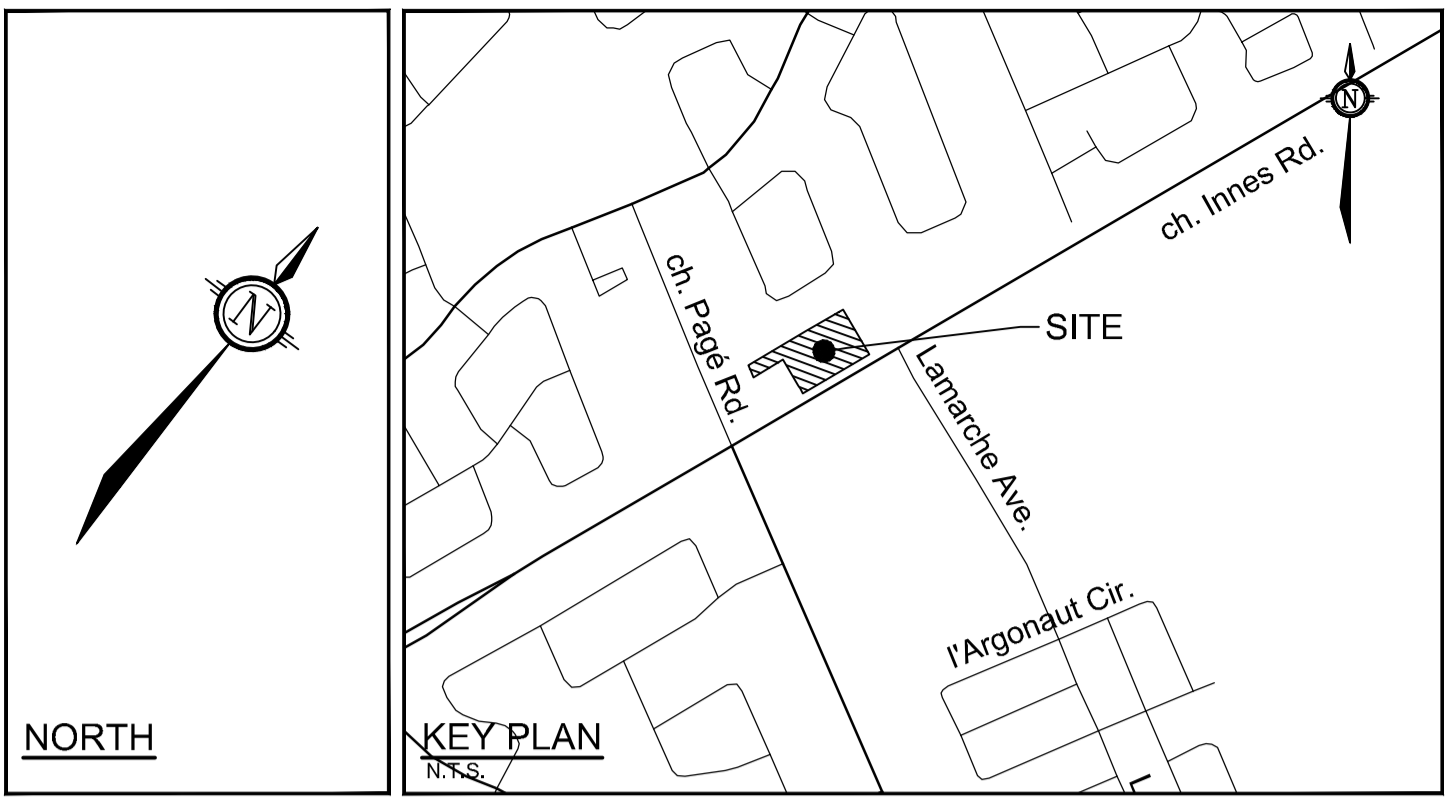


Allison Hamlin

**ALLISON HAMLIN
MANAGER, DEVELOPMENT REVIEW ALL WARDS
PLANNING, DEVELOPMENT & BUILDING SERVICES
DEPARTMENT, CITY OF OTTAWA**

APPROVED
By Allison Hamlin at 4:13 pm, Aug 13, 2024



LEGEND

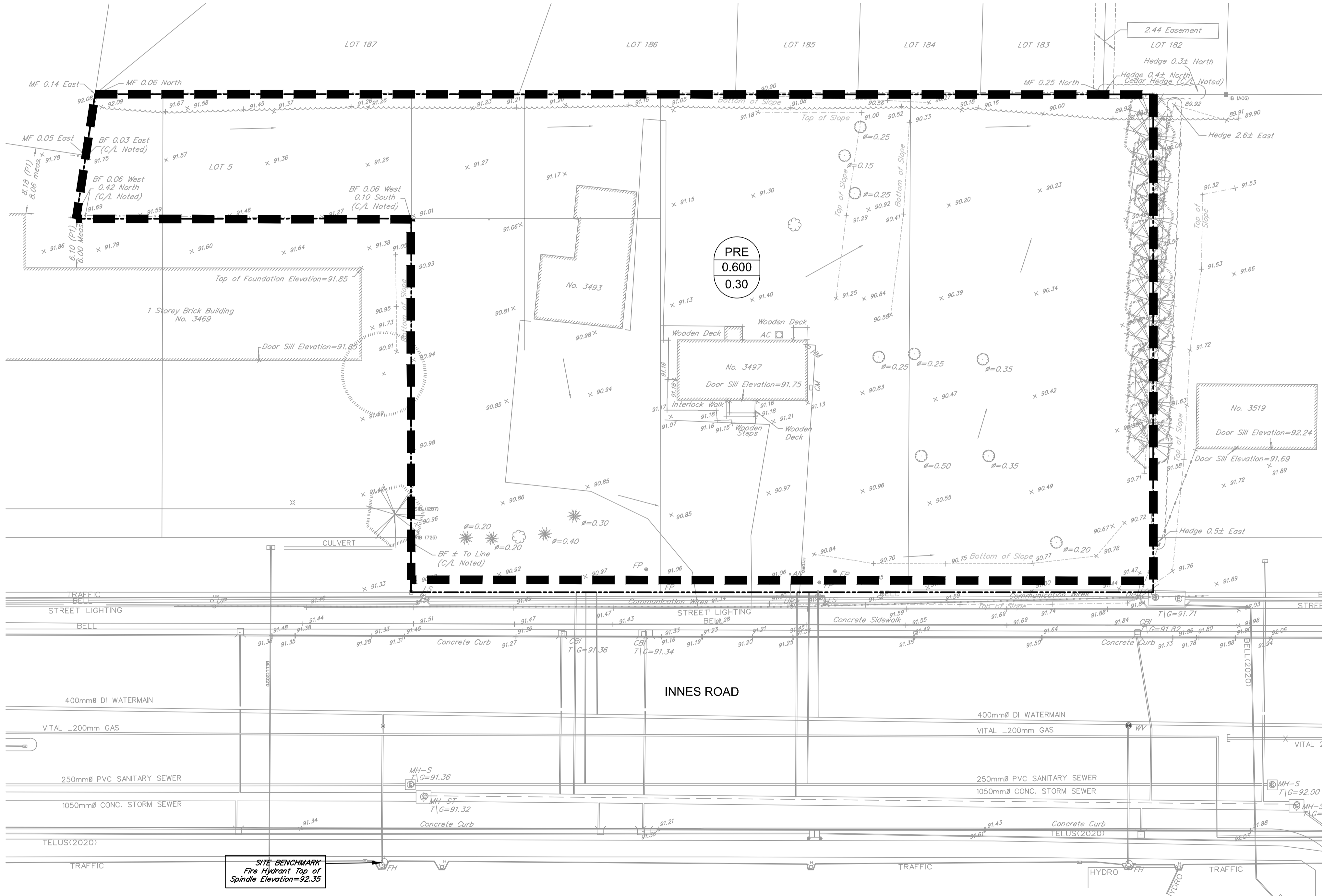
- DRAINAGE AREA LIMITS
- PRE 0.600 PRE-DEVELOPMENT AREA ID
- 0.30 PRE-DEVELOPMENT DRAINAGE AREA (ha)
- 1.5 YEAR WEIGHTED RUNOFF COEFFICIENT
- EXISTING CONCRETE CURB
- VSVB EXISTING VALVE & VALVE BOX
- SP EXISTING SERVICE POST
- HYD EXISTING HYDRANT
- CBMH EXISTING CATCHBASIN
- CB EXISTING CATCHBASIN MH
- EX UP EXISTING UTILITY POLE
- EXISTING DRAINAGE DIRECTION ARROWS
- ⇒ EXISTING OVERLAND FLOW

GENERAL NOTES:

1. COORDINATE AND SCHEDULE ALL WORK WITH OTHER TRADES AND CONTRACTORS.
2. DETERMINE THE EXACT LOCATION, SIZE, MATERIAL AND ELEVATION OF ALL EXISTING UTILITIES PRIOR TO COMMENCING CONSTRUCTION. PROTECT AND ASSUME RESPONSIBILITY FOR ALL EXISTING UTILITIES WHETHER OR NOT SHOWN ON THIS DRAWING.
3. ALL ELEVATIONS ARE GEODETIC.
4. REFER TO THE GEOTECHNICAL INVESTIGATION PROPOSED DEVELOPMENT - 3493-3499 INNES ROAD - (REPORT NO.: PG5775-LET 01), PREPARED BY PATERSON GROUP ON APRIL 5, 2021. FOR SUBSURFACE CONDITIONS, CONSTRUCTION RECOMMENDATIONS, AND GEOTECHNICAL INSPECTION REQUIREMENTS, THE GEOTECHNICAL CONSULTANT IS TO REVIEW ON-SITE CONDITIONS AFTER EXCAVATION PRIOR TO PLACEMENT OF THE GRANULAR MATERIAL.
5. REFER TO THE DEVELOPMENT SERVICING STUDY AND STORMWATER MANAGEMENT REPORT(R-2022-171) PREPARED BY NOVATECH.

BENCHMARK NOTES:

1. ELEVATIONS SHOWN ARE GEODETIC AND ARE REFERRED TO THE CGVD28 GEODETIC DATUM.
2. IT IS THE RESPONSIBILITY OF THE USER OF THIS INFORMATION TO VERIFY THAT THE JOB BENCHMARK HAS NOT BEEN ALTERED OR DISTURBED AND THAT ITS RELATIVE ELEVATION AND DESCRIPTION AGREES WITH THE INFORMATION SHOWN ON THIS DRAWING.
3. BENCHMARK WAS PROVIDED ON SURVEYOR'S REAL PROPERTY REPORT PART 1, PLAN OF PART OF LOT 5, CONCESSION 2 (OTTAWA FRONT) GEOGRAPHIC TOWNSHIP OF GLOUCESTER, CITY OF OTTAWA, SURVEYED BY ANNIS, O'SULLIVAN AND VOLEBEKK LTD.



PRE
0.600
0.30

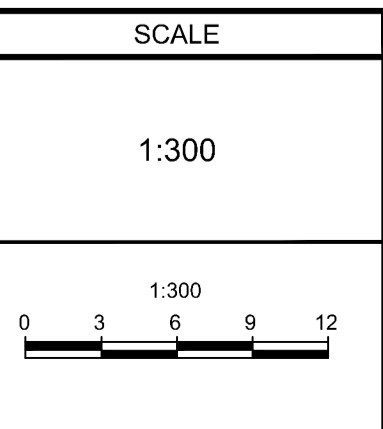
SITE BENCHMARK
Fire Hydrant Top of Spindle Elevation=92.35

NOTE:
THE POSITION OF ALL POLE LINES, CONDUITS, WATERMANS, SEWERS AND OTHER UNDERGROUND AND OVERGROUND UTILITIES AND STRUCTURES IS NOT NECESSARILY SHOWN ON THE CONTRACT DRAWINGS, AND WHERE SHOWN, THE ACCURACY OF THE POSITION OF SUCH UTILITIES AND STRUCTURES IS NOT GUARANTEED. BEFORE STARTING WORK, DETERMINE THE EXACT LOCATION OF ALL SUCH UTILITIES AND STRUCTURES AND ASSUME ALL LIABILITY FOR DAMAGE TO THEM.

OWNER INFORMATION
6587712 CANADA INC.
1085 BOULEVARD DE LA CARRIERE,
GATINEAU, QUEBEC, J8Y 6V4

VALÉRIE LAPENÉE
PHONE: (819) 664-4306
EMAIL: valerie@matelapensee.ca

No.	REVISION	DATE	BY
1.	ISSUED AS PER CITY COMMENTS	JUN 7/23	FST



DESIGN	CV
CHECKED	FST
DRAWN	CVZA
CHECKED	FST
APPROVED	FST

FOR REVIEW ONLY

NOVATECH
Engineers, Planners & Landscape Architects
Suite 200, 240 Michael Cowpland Drive
Ottawa, Ontario, Canada K2M 1P6

Telephone (613) 254-9643
Facsimile (613) 254-5867
Website www.novatech-eng.com

LOCATION
CITY OF OTTAWA
3493, 3497 & 3499 INNES ROAD

DRAWING NAME
PRE-DEVELOPMENT
STORMWATER DRAINAGE PLAN

PROJECT No.	118204
REV	REV # 1
DRAWING No.	118204-STM
PLAN	#19124

M:\2018\118204\CAD\Design\118204-SWM.dwg, STM, Jun 13, 2024, - 11:31am, Cussler

D07-12-22-0189