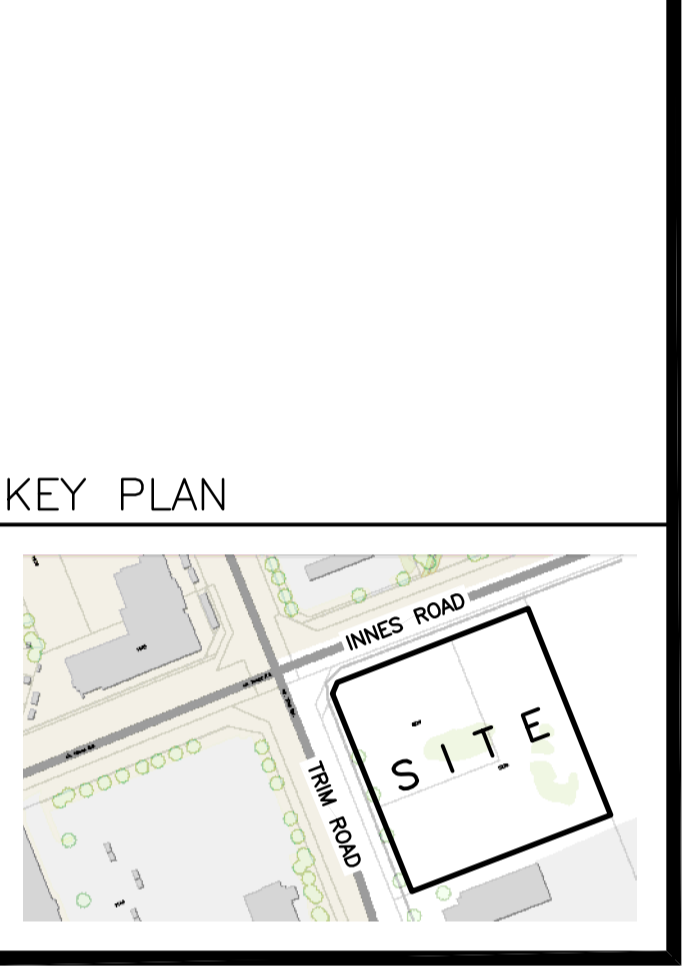


**LEGEND**

- FFL FINISHED FLOOR ELEVATION
- USF UNDERSIDE OF FOOTING
- — — — — PROPERTY LINE
- CB [Symbol] CATCH BASIN
- CICB [Symbol] CURB INLET CATCH BASIN
- MH [Symbol] STORM MANHOLE
- CBMH [Symbol] CATCH BASIN MANHOLE
- CIMH [Symbol] CURB INLET MANHOLE
- MH [Symbol] SANITARY MANHOLE
- FH [Symbol] FIRE HYDRANT
- FDC [Symbol] FIRE DEPARTMENT CONNECTION
- T.O.S — TOP OF SLOPE
- · · · · SILT FENCE BARRIER

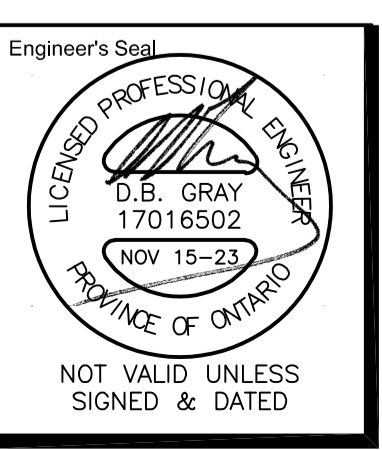


No.	DATE	REVISION
4	NOV 15-23	RE-ISSUED FOR APPROVAL
3	JUN 30-23	RE-ISSUED FOR APPROVAL
2	DEC 21-22	ISSUED FOR APPROVAL
1	DEC 19-22	ISSUED FOR COORDINATION

**D. B. GRAY ENGINEERING INC.**  
 Stormwater Management - Grading & Drainage - Storm & Sanitary Sewers - Watermain  
 700 Long Point Circle 613-425-8044  
 Ottawa, Ontario d.gray@dbgrayengineering.com

Project  
**PROPOSED 3-STORY DYMON STORAGE BUILDING**  
 5210 INNES ROAD  
 OTTAWA, ONTARIO

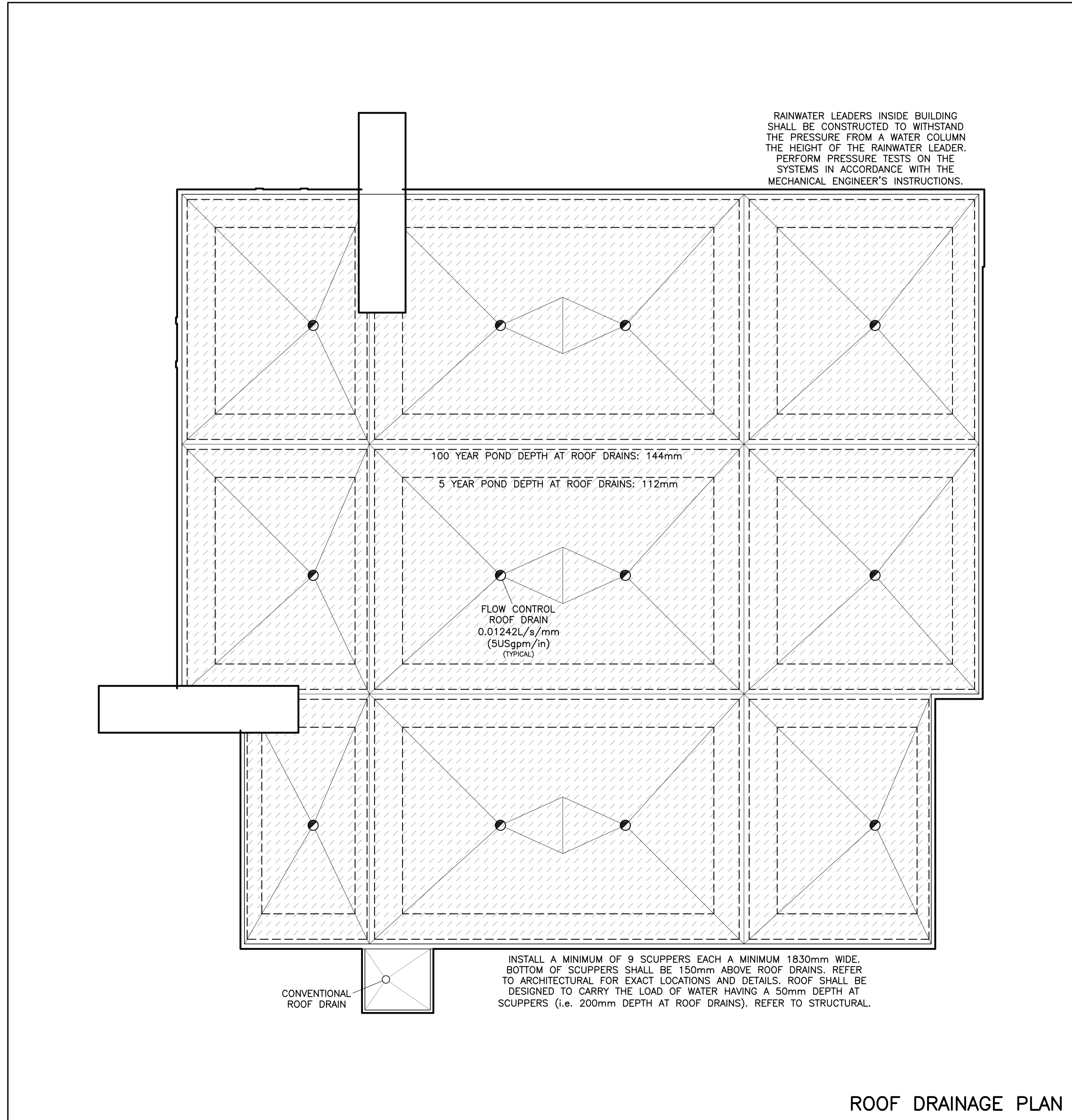
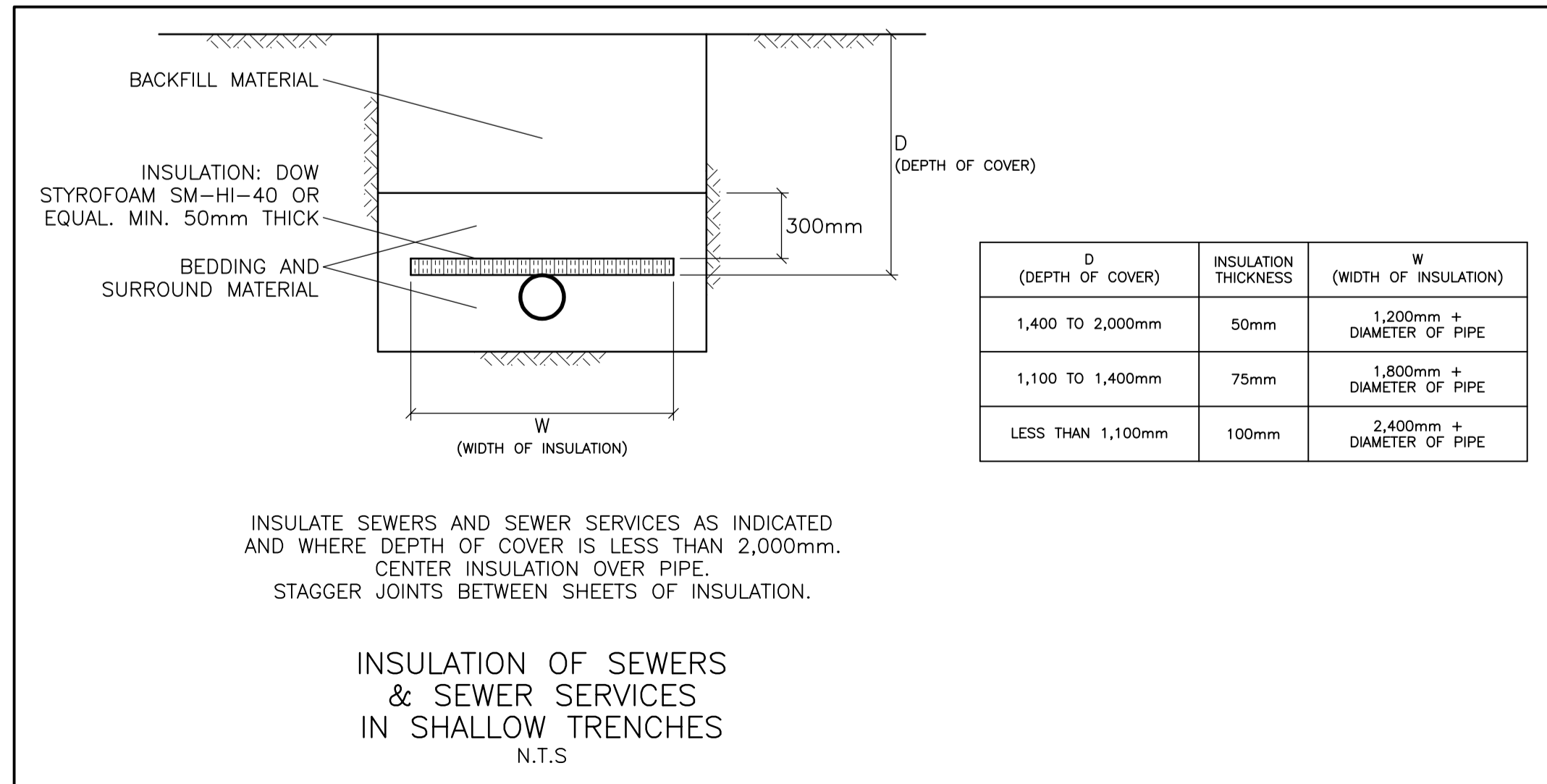
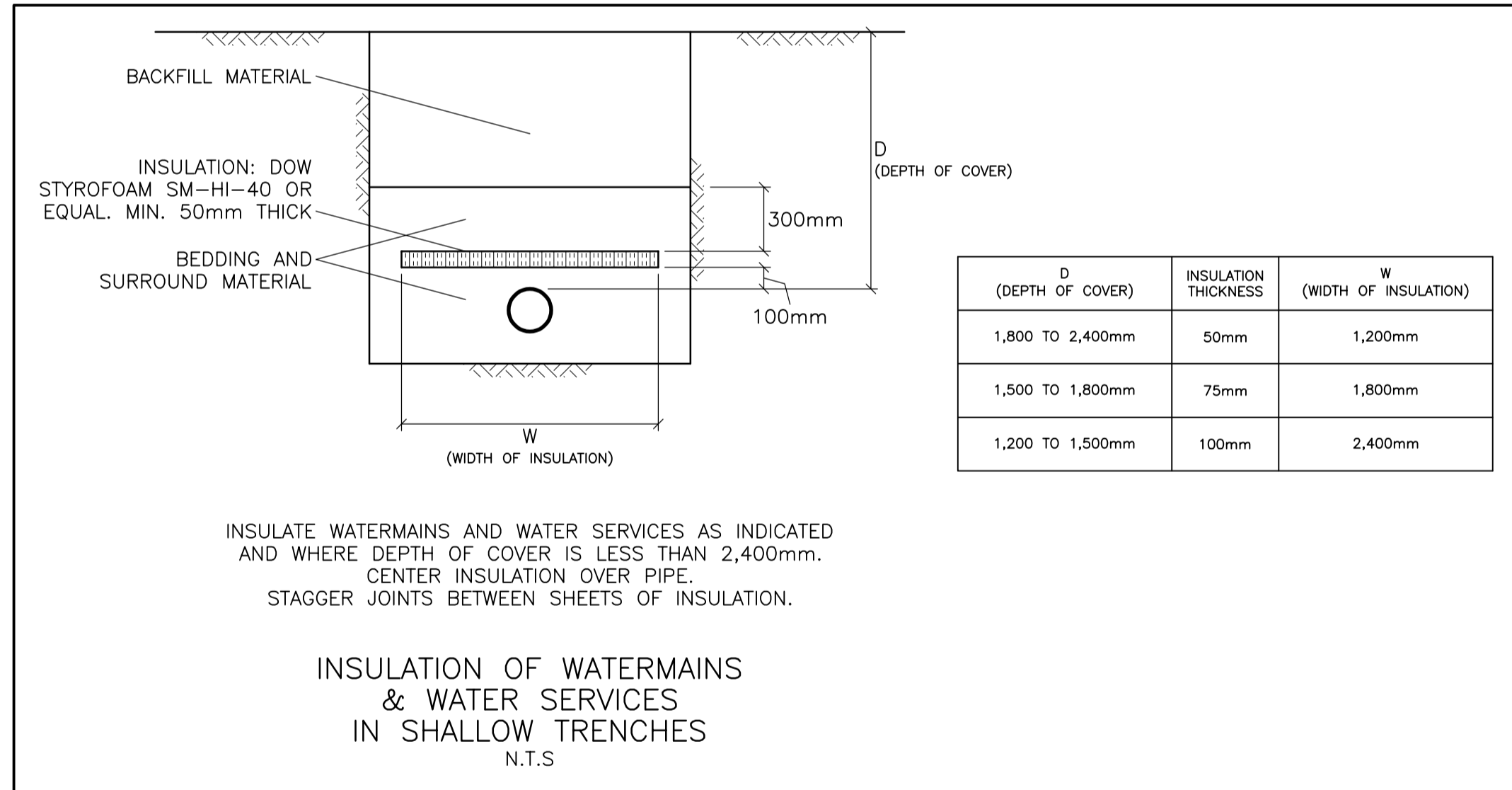
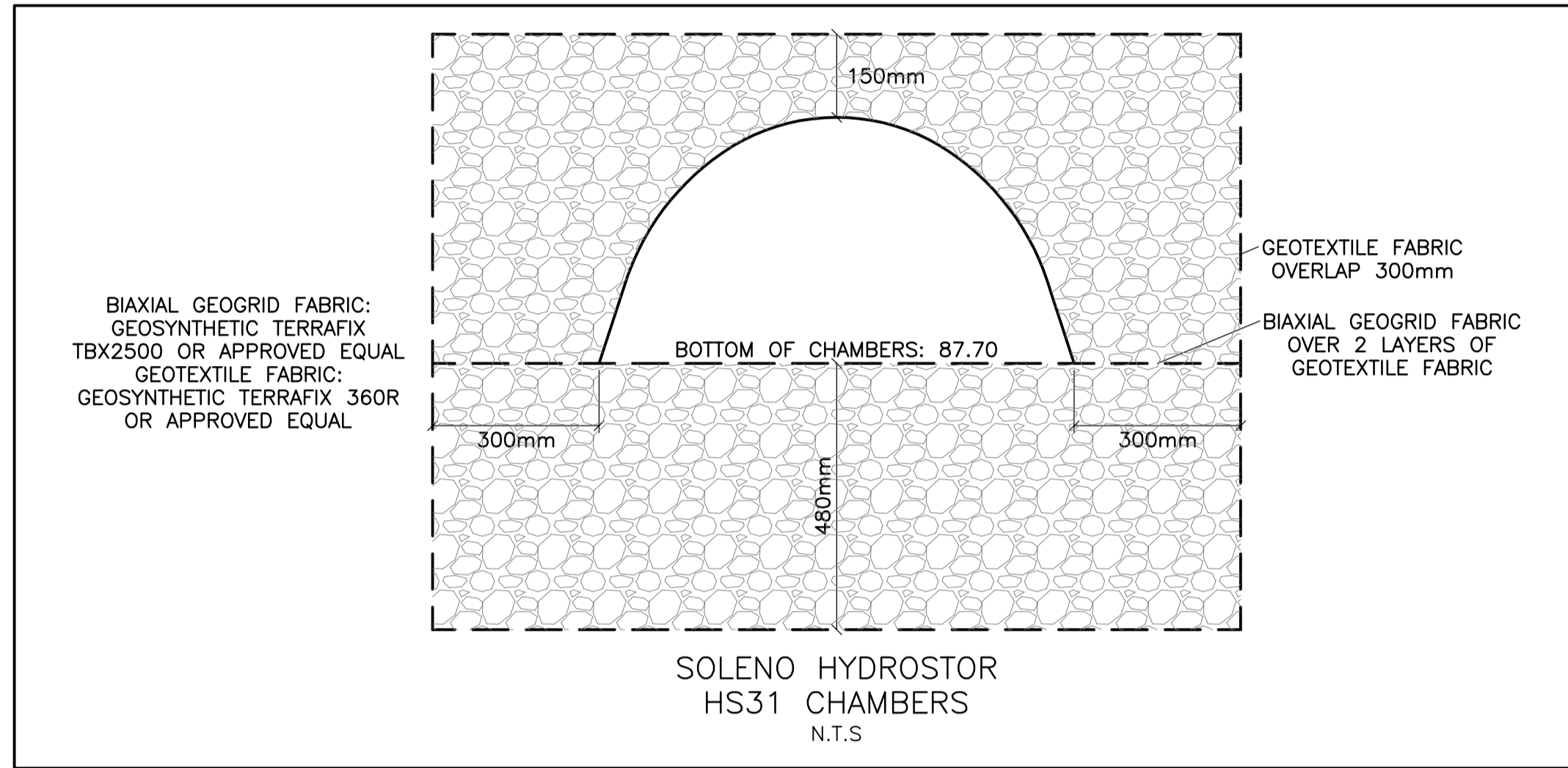
Drawing Title  
**EROSION & SEDIMENT CONTROL PLAN**



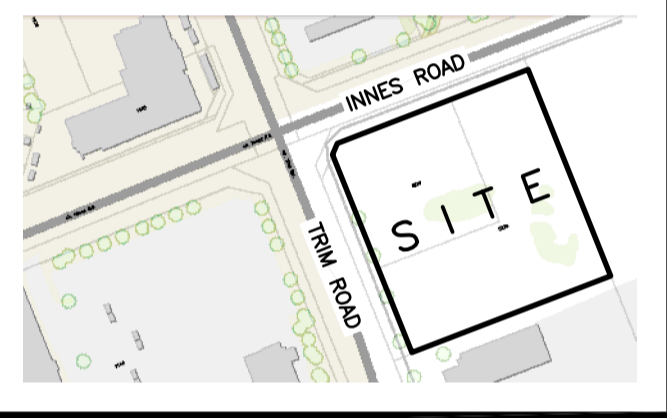
Engineer's Seal  
 Drawn D.B.G.  
 H. Scale 1:250  
 V. Scale  
 Date DEC 19-22  
 Job No. 21025  
 Drawing No.  
**C-3**  
 of 9

REFER TO NOTES, DETAILS & SCHEDULES ON DRAWINGS C-4, C-5 & C-6





KEY PLAN

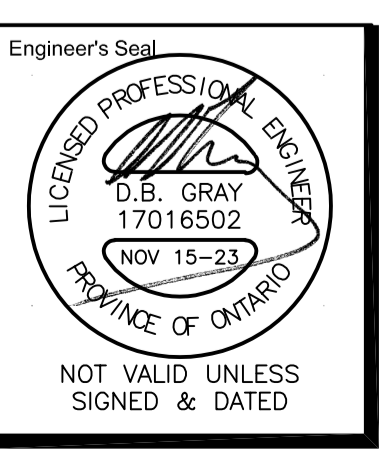


No.	DATE	REVISION
4	NOV 15-23	RE-ISSUED FOR APPROVAL
3	JUN 30-23	RE-ISSUED FOR APPROVAL
2	DEC 21-22	ISSUED FOR APPROVAL
1	DEC 19-22	ISSUED FOR COORDINATION

**D. B. GRAY ENGINEERING INC.**  
 Stormwater Management - Grading & Drainage - Storm & Sanitary Sewers - Watermain  
 700 Long Point Circle 613-425-8044  
 Ottawa, Ontario d.gray@dbgrayengineering.com

Project  
**PROPOSED 3-STORY DYMON STORAGE BUILDING**  
 5210 INNES ROAD  
 OTTAWA, ONTARIO

Drawing Title  
**DETAILS**



Engineer's Seal  
 Drawn D.B.G.  
 H. Scale  
 V. Scale  
 Date DEC 19-22  
 Job No. 21025  
 Drawing No.  
**C-5**  
 of 9

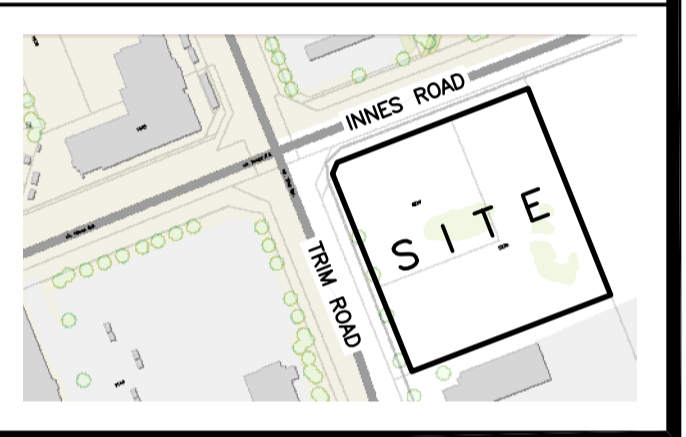
### WATER SERVICE PROFILE TABLE

150mm PVC DR18					
STATION	DESCRIPTION	GRADE ELEVATION	TOP OF PIPE	DEPTH OF COVER	NOTES
A+00.0	150mm x 400mm TEE CONNECTION IN 400mm MUNICIPAL WATERMAIN	±88.73	±86.55	±2.18	CONNECTION BY CITY. EXCAVATION, BACKFILL & REINSTATEMENT BY CONTRACTOR. START OF INSULATION 50mm THICK.
A+01.0	5' VERTICAL BEND DOWN	±88.71	86.55	±2.16	INSULATION 50mm THICK
A+06.4	5' VERTICAL BEND UP	±88.59	86.08	±2.51	END OF INSULATION 50mm THICK
A+11.5	-	±88.48	86.08	±2.40	BOTTOM OF CURB
A+12.4	-	88.49	86.08	2.41	-
A+18.4	-	88.79	86.18	2.61	-
A+19.0	150mm VALVE & VALVE BOX	88.83	86.18	2.65	ON PROPERTY LINE
A+20.0 B+00.0	150mm x 150mm TEE	88.85	86.18	2.67	-
A+25.5	-	89.11	86.28	2.83	-
A+27.3	-	89.03	86.34	2.69	BOTTOM OF CURB
A+28.4	-	88.99	86.38	2.61	-
A+30.3	-	89.01	86.48	2.53	CROSSING 250 ST INV 87.23 WM TOP 86.48 - 750mm CLEARANCE (MIN. 500mm REQ'D)
A+32.6	-	89.05	86.60	2.45	CROSSING 250 ST INV 87.63 WM TOP 86.60 - 1030mm CLEARANCE (MIN. 500mm REQ'D)
A+34.4	-	89.08	86.68	2.40	-
A+39.1	-	89.16	86.76	2.40	-
A+42.1	-	89.21	86.81	2.40	CROSSING 150 SAN INV 87.38 WM TOP 86.81 - 570mm CLEARANCE (MIN. 500mm REQ'D)
A+45.1	-	89.30	86.90	2.40	-
A+47.3	-	89.37	86.97	2.40	ENTRY INTO BUILDING
B+00.0 A+20.0	150mm x 150mm TEE	88.85	86.18	2.67	-
B+01.0	150mm VALVE & VALVE BOX	88.85	86.18	2.67	-
B+02.0	FIRE HYDRANT	88.85	86.18	2.67	-

### CATCH BASIN & MANHOLE SCHEDULE

REF	TOP	SIZE	TYPE	INVERT AT INLET	INVERT AT OUTLET	NOTES
<b>STORM SEWER</b>						
CB-1	88.92	600mm x 600mm	PRECAST CONCRETE CATCH BASIN	-	87.93	IN ACCORDANCE WITH OPSD 705.010 & CITY OF OTTAWA STANDARDS - FRAME & COVER IN ACCORDANCE WITH CITY OF OTTAWA DRAWING No. S19
CB-2	88.92	600mm x 600mm	PRECAST CONCRETE CATCH BASIN	-	87.86	IN ACCORDANCE WITH OPSD 705.010 & CITY OF OTTAWA STANDARDS - FRAME & COVER IN ACCORDANCE WITH CITY OF OTTAWA DRAWING No. S19
CIMH-3	88.88	1200mm	PRECAST CONCRETE CURB INLET MANHOLE	-	87.96	IN ACCORDANCE WITH OPSD 701.010 & CITY OF OTTAWA STANDARDS - FRAME & COVER IN ACCORDANCE WITH CITY OF OTTAWA DRAWING No. S28
CIMH-4	88.88	1200mm	PRECAST CONCRETE CURB INLET MANHOLE	87.75(S)	87.75(NW)	IN ACCORDANCE WITH OPSD 701.010 & CITY OF OTTAWA STANDARDS - FRAME & COVER IN ACCORDANCE WITH CITY OF OTTAWA DRAWING No. S28
CB-5	88.80	600mm x 600mm	PRECAST CONCRETE CATCH BASIN	-	87.71	IN ACCORDANCE WITH OPSD 705.010 & CITY OF OTTAWA STANDARDS - FRAME & COVER IN ACCORDANCE WITH CITY OF OTTAWA DRAWING No. S19
CICB-6	88.88	600mm x 600mm	PRECAST CONCRETE CURB INLET CATCH BASIN	-	87.72	IN ACCORDANCE WITH OPSD 705.010 & CITY OF OTTAWA STANDARDS - FRAME & COVER IN ACCORDANCE WITH CITY OF OTTAWA DRAWING No. S22 & S23
CBMH-7	88.93	1200mm	PRECAST CONCRETE CATCH BASIN MANHOLE	87.70(SE)	87.70(W)	IN ACCORDANCE WITH OPSD 701.010 & CITY OF OTTAWA STANDARDS - FRAME & COVER IN ACCORDANCE WITH CITY OF OTTAWA DRAWING No. S25 & S28.1
CICB-8	88.83	600mm x 600mm	PRECAST CONCRETE CURB INLET CATCH BASIN	-	87.72	IN ACCORDANCE WITH OPSD 705.010 & CITY OF OTTAWA STANDARDS - FRAME & COVER IN ACCORDANCE WITH CITY OF OTTAWA DRAWING No. S22 & S23
CB-9	88.83	600mm x 600mm	PRECAST CONCRETE CATCH BASIN	-	87.72	IN ACCORDANCE WITH OPSD 705.010 & CITY OF OTTAWA STANDARDS - FRAME & COVER IN ACCORDANCE WITH CITY OF OTTAWA DRAWING No. S19
CB-10	88.96	600mm x 600mm	PRECAST CONCRETE CATCH BASIN	-	87.71	IN ACCORDANCE WITH OPSD 705.010 & CITY OF OTTAWA STANDARDS - FRAME & COVER IN ACCORDANCE WITH CITY OF OTTAWA DRAWING No. S19
CBMH-11	88.88	1200mm	PRECAST CONCRETE CATCH BASIN MANHOLE	87.70(N) 87.70(E)	87.70(S)	IN ACCORDANCE WITH OPSD 701.010 & CITY OF OTTAWA STANDARDS - FRAME & COVER IN ACCORDANCE WITH CITY OF OTTAWA DRAWING No. S25 & S28.1
CB-12	88.84	600mm x 600mm	PRECAST CONCRETE CATCH BASIN	-	87.77	IN ACCORDANCE WITH OPSD 705.010 & CITY OF OTTAWA STANDARDS - FRAME & COVER IN ACCORDANCE WITH CITY OF OTTAWA DRAWING No. S19
CBMH-13	88.80	1200mm	PRECAST CONCRETE CATCH BASIN MANHOLE	-	87.93	IN ACCORDANCE WITH OPSD 701.010 & CITY OF OTTAWA STANDARDS - FRAME & COVER IN ACCORDANCE WITH CITY OF OTTAWA DRAWING No. S25 & S28.1
CBMH-14	88.88	1200mm	PRECAST CONCRETE CATCH BASIN MANHOLE	87.70(E)	87.70(N)	IN ACCORDANCE WITH OPSD 701.010 & CITY OF OTTAWA STANDARDS - FRAME & COVER IN ACCORDANCE WITH CITY OF OTTAWA DRAWING No. S25 & S28.1
CBMH-15	88.90	1200mm	PRECAST CONCRETE CATCH BASIN MANHOLE	87.70(N) 87.61(S)	87.55(W)	IN ACCORDANCE WITH OPSD 701.010 & CITY OF OTTAWA STANDARDS - FRAME & COVER IN ACCORDANCE WITH CITY OF OTTAWA DRAWING No. S25 & S28.1  ICD IN OUTLET PIPE
CB-16	88.29	600mm x 600mm	PRECAST CONCRETE CATCH BASIN	-	87.54	IN ACCORDANCE WITH OPSD 705.010 & CITY OF OTTAWA STANDARDS - FRAME & COVER IN ACCORDANCE WITH CITY OF OTTAWA DRAWING No. S19
MH-17	89.00	1200mm	PRECAST CONCRETE MANHOLE	87.51	87.45(W)	IN ACCORDANCE WITH OPSD 701.010 & CITY OF OTTAWA STANDARDS - FRAME & COVER IN ACCORDANCE WITH CITY OF OTTAWA DRAWING No. S25 & S24.1  WATERTIGHT COVER
MH-18	89.08	1200mm	PRECAST CONCRETE MANHOLE	87.33(E)	87.30(NW)	IN ACCORDANCE WITH OPSD 701.010 & CITY OF OTTAWA STANDARDS - FRAME & COVER IN ACCORDANCE WITH CITY OF OTTAWA DRAWING No. S25 & S24.1
MH-19	88.93	1200mm	PRECAST CONCRETE MANHOLE	87.52(E) 87.20(SE)	87.17(W)	IN ACCORDANCE WITH OPSD 701.010 & CITY OF OTTAWA STANDARDS - FRAME & COVER IN ACCORDANCE WITH CITY OF OTTAWA DRAWING No. S25 & S24.1
<b>SANITARY SEWER</b>						
MH-SA.1	89.02	1200mm	PRECAST CONCRETE MANHOLE	87.21(SE)	87.18(W)	IN ACCORDANCE WITH OPSD 701.010 & CITY OF OTTAWA STANDARDS - FRAME & COVER IN ACCORDANCE WITH CITY OF OTTAWA DRAWING No. S25 & S24

#### KEY PLAN



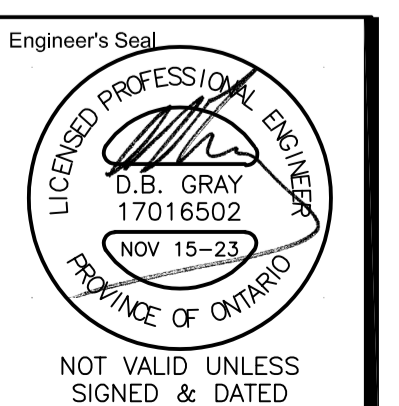
No.	DATE	REVISION
5	NOV 15-23	RE-ISSUED FOR APPROVAL
4	OCT 11-23	RE-ISSUED FOR APPROVAL
3	JUN 30-23	RE-ISSUED FOR APPROVAL
2	DEC 21-22	ISSUED FOR APPROVAL
1	DEC 19-22	ISSUED FOR COORDINATION

**D. B. GRAY ENGINEERING INC.**  
Stormwater Management - Grading & Drainage - Storm & Sanitary Sewers - Watermain

700 Long Point Circle      613-425-8044  
Ottawa, Ontario      d.gray@dbgrayengineering.com

Project  
**PROPOSED 3-STOREY  
DYMON STORAGE BUILDING**  
5210 INNES ROAD  
OTTAWA, ONTARIO

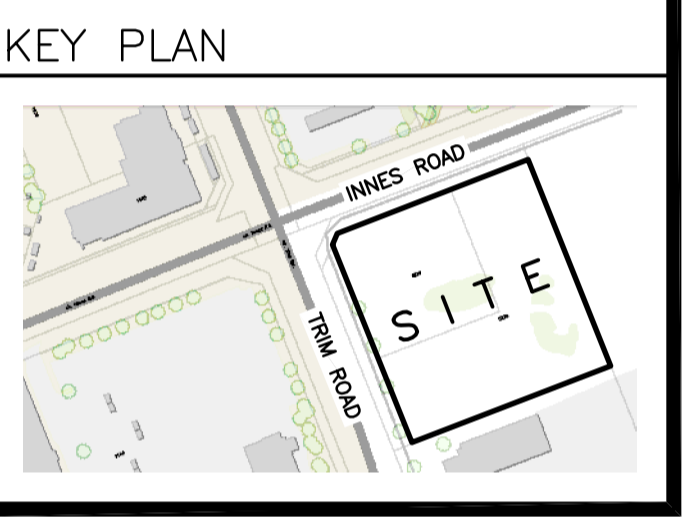
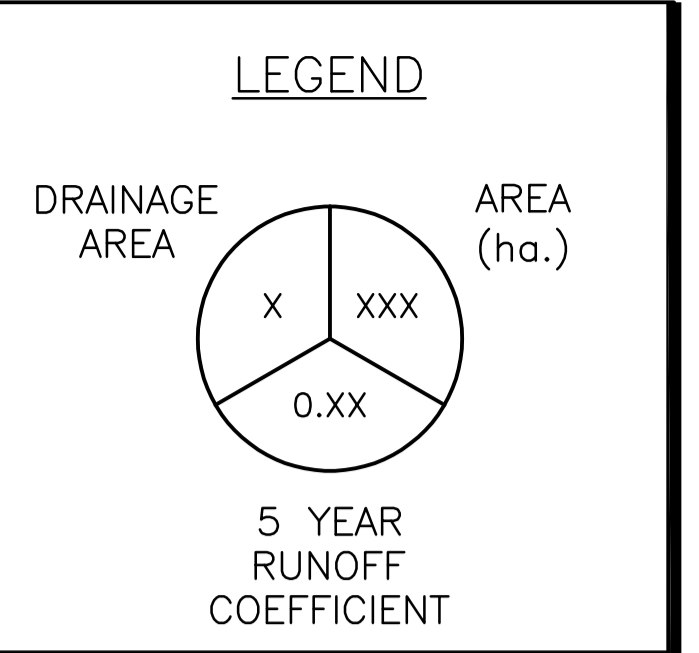
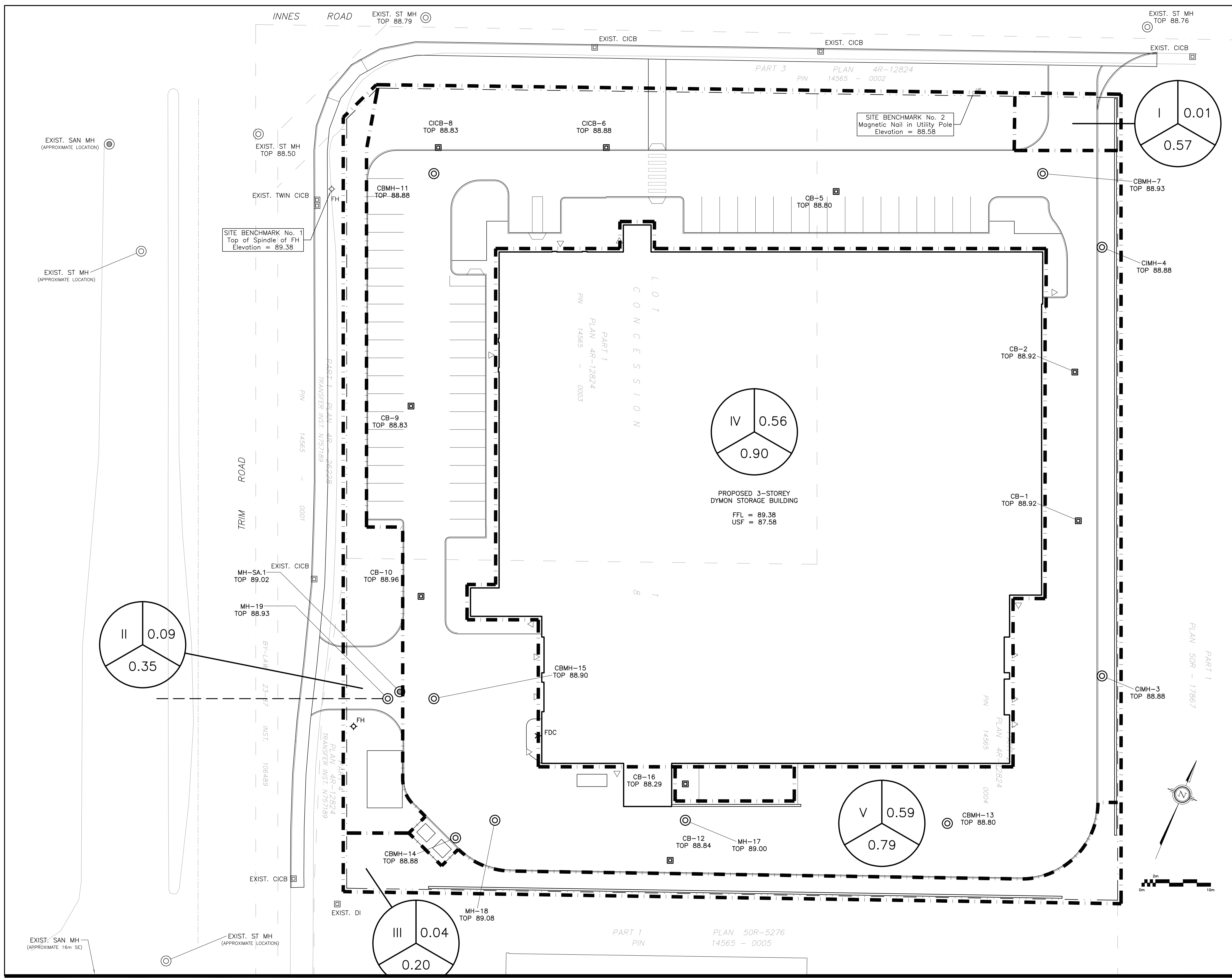
Drawing Title  
**SCHEDULES**



Drawn	D.B.G.
H. Scale	
V. Scale	
Date	DEC 19-22
Job No.	Z1025

Drawing No.  
**C-6**  
of 9



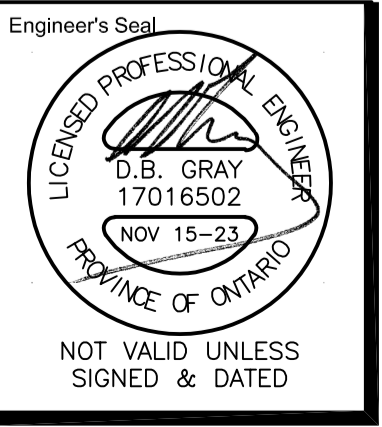


No.	DATE	REVISION
4	NOV 15-23	RE-ISSUED FOR APPROVAL
3	JUN 30-23	RE-ISSUED FOR APPROVAL
2	DEC 21-22	ISSUED FOR APPROVAL
1	DEC 19-22	ISSUED FOR COORDINATION

**D. B. GRAY ENGINEERING INC.**  
 Stormwater Management - Grading & Drainage - Storm & Sanitary Sewers - Watermain  
 700 Long Point Circle 613-425-8044  
 Ottawa, Ontario d.gray@dbgrayengineering.com

Project  
**PROPOSED 3-STORY DYMON STORAGE BUILDING**  
 5210 INNES ROAD  
 OTTAWA, ONTARIO

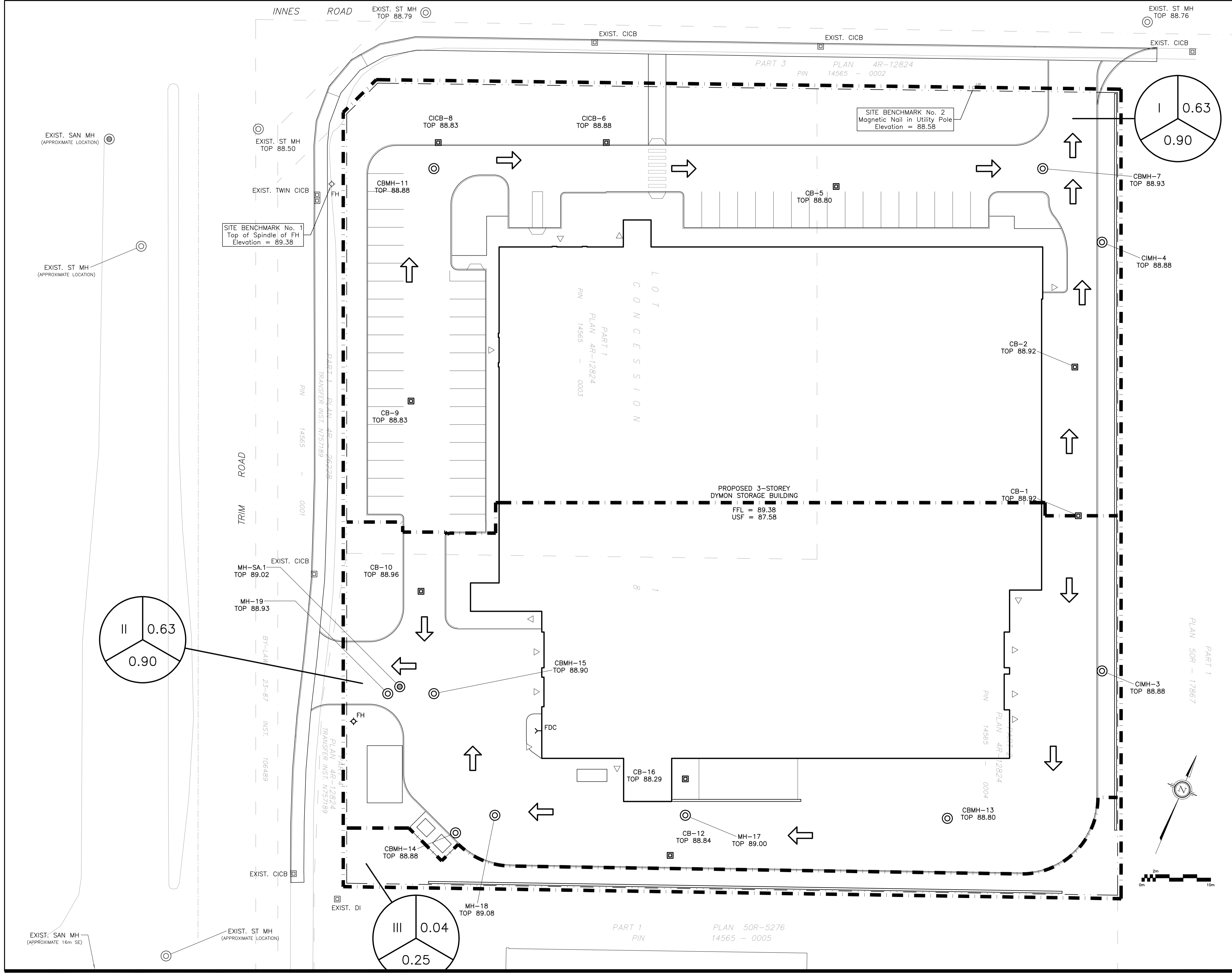
Drawing Title  
**MINOR SYSTEM POST-DEVELOPMENT DRAINAGE PLAN**



Drawn D.B.G.  
 H. Scale 1:250  
 V. Scale  
 Date DEC 19-22  
 Job No. 21025

Drawing No.  
**C-8**  
 of 9





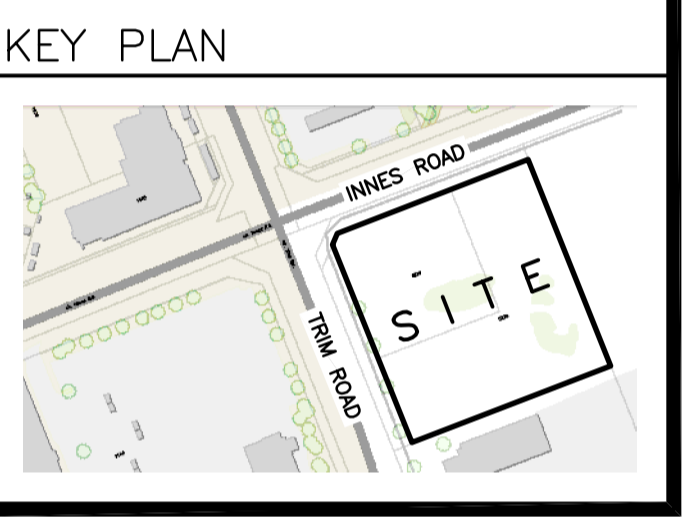
**LEGEND**

DRAINAGE AREA

AREA (ha.)

x    xxx  
0.xx

100 YEAR RUNOFF COEFFICIENT

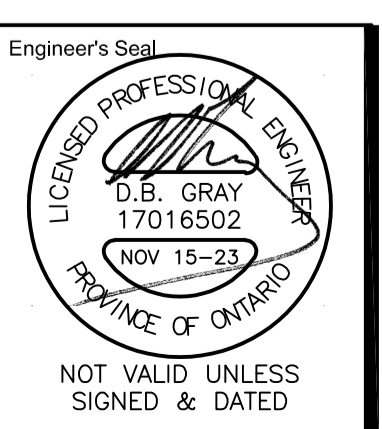


No.	DATE	REVISION
1	NOV 15-23	ISSUED FOR APPROVAL

**D. B. GRAY ENGINEERING INC.**  
 Stormwater Management - Grading & Drainage - Storm & Sanitary Sewers - Watermain  
 700 Long Point Circle    613-425-8044  
 Ottawa, Ontario    d.gray@dbgrayengineering.com

Project  
**PROPOSED 3-STORY DYMON STORAGE BUILDING**  
 5210 INNES ROAD  
 OTTAWA, ONTARIO

Drawing Title  
**MAJOR SYSTEM POST-DEVELOPMENT DRAINAGE PLAN**



Drawn D.B.G.  
 H. Scale 1:250  
 V. Scale  
 Date DEC 19-22  
 Job No. 21025

Drawing No.  
**C-9**  
 of 9