

Dymon - 5210 Innes Road Massing

Friday, December 23, 2022

SCHEME 1

- DYMON**
- Reception/Retail
 - Office
 - Self-Storage
 - Loading/Other



TACT Architecture Inc.

660R College Street [Rear Lane]
Toronto Ontario M6G 1B8
416-516-1949
www.tactarchitecture.com

Note: This drawing and all copyright therein are the sole and exclusive property of TACT Architecture Inc. Reproduction or use of this drawing in whole or in part by any means or in any way whatsoever without the prior written consent of TACT Architecture is strictly prohibited. Do not scale this drawing. Print date: Friday, December 23, 2022.

file: 1611-41 Ottawa - 5210 Innes Road V_3.pln

job title
5210 Innes Road

client
Dymon Capital Corporation

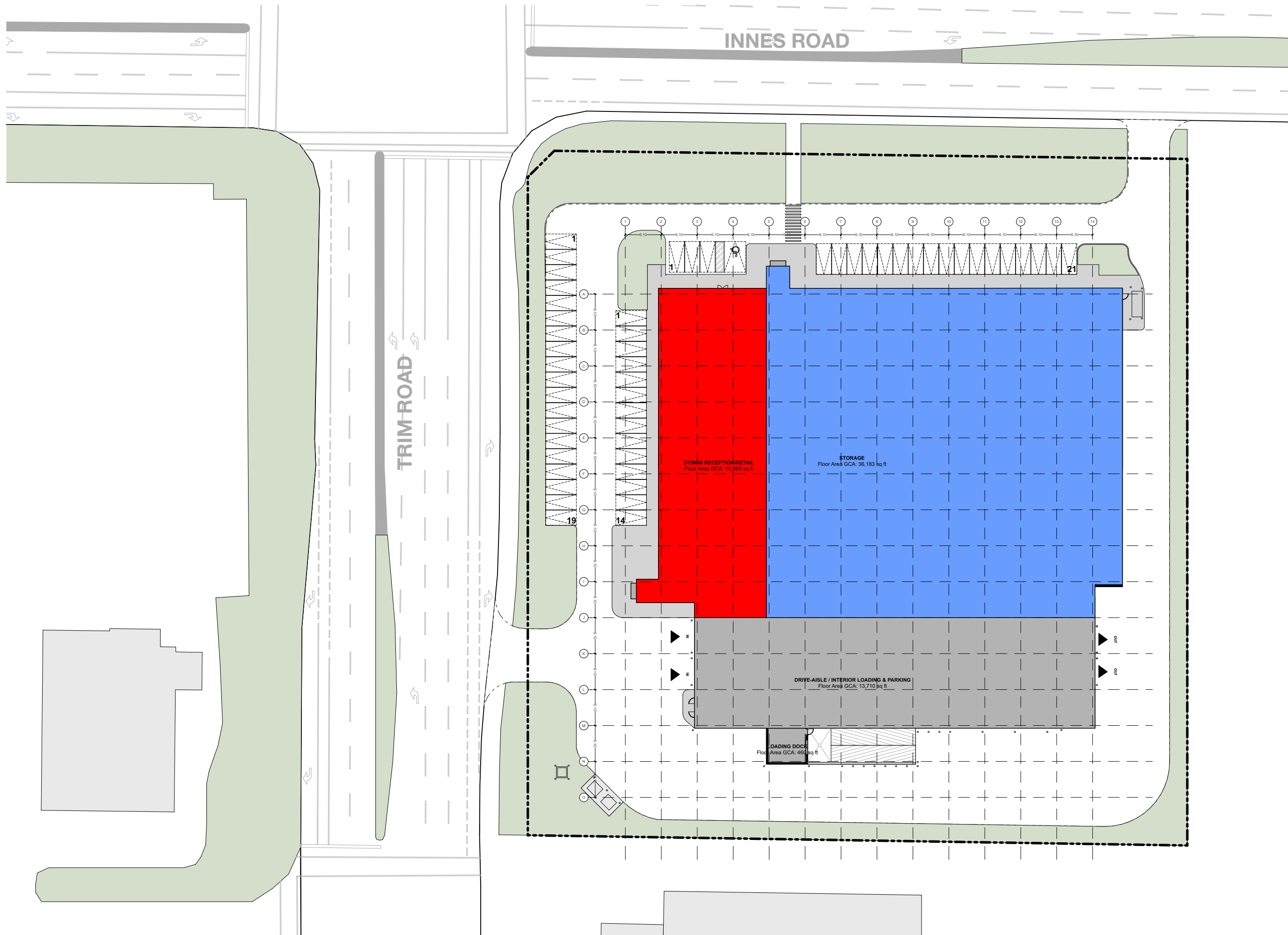
sheet title
SITE PLAN

drawn by **ST, NS, DW** checked by **PJ**

issue date
Friday, December 23, 2022

scale
1:600

job number
1611-31



SCHEME 1

- DYMON**
- Reception/Retail
 - Office
 - Self-Storage
 - Loading/Other

TACT Architecture Inc.

660R College Street [Rear Lane]
Toronto Ontario M6G 1B8
416-516-1949
www.tactarchitecture.com

Note: This drawing and all copyright therein are the sole and exclusive property of TACT Architecture Inc. Reproduction or use of this drawing in whole or in part by any means or in any way whatsoever without the prior written consent of TACT Architecture is strictly prohibited. Do not scale this drawing. Print date: Friday, December 23, 2022.

file: 1611-41 Ottawa - 5210 Innes Road V_3.pln

job title
5210 Innes Road

client
Dymon Capital Corporation

sheet title
VIEWS

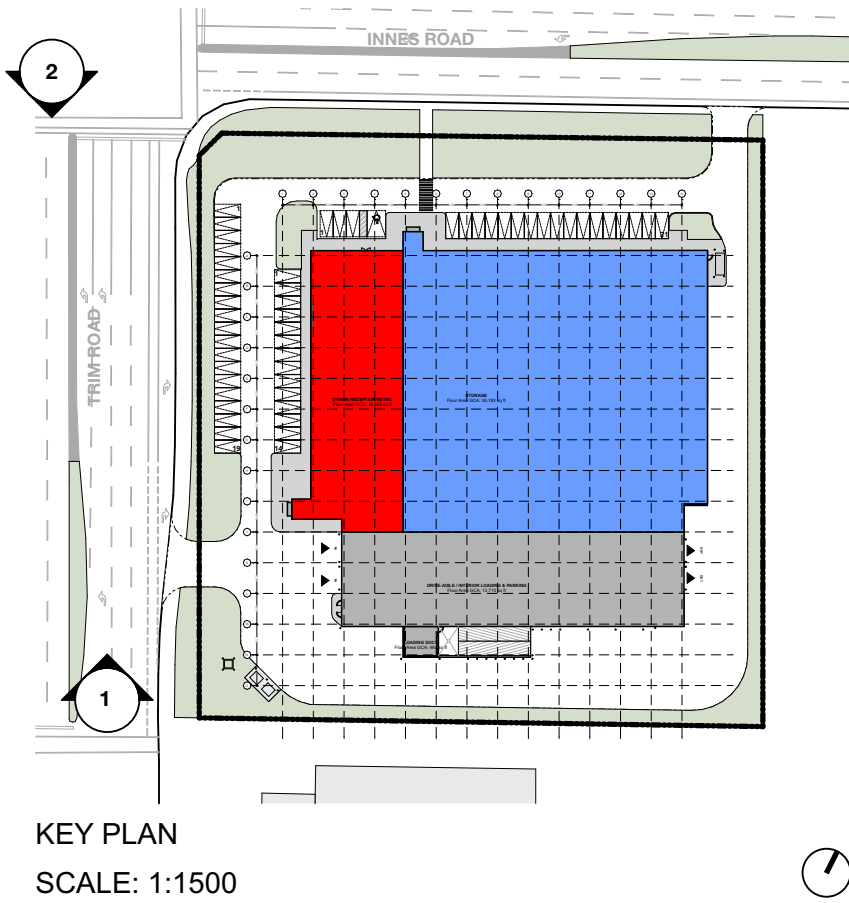
drawn by
ST, NS, DW

checked by
PJ

issue date
Friday, December 23, 2022

scale

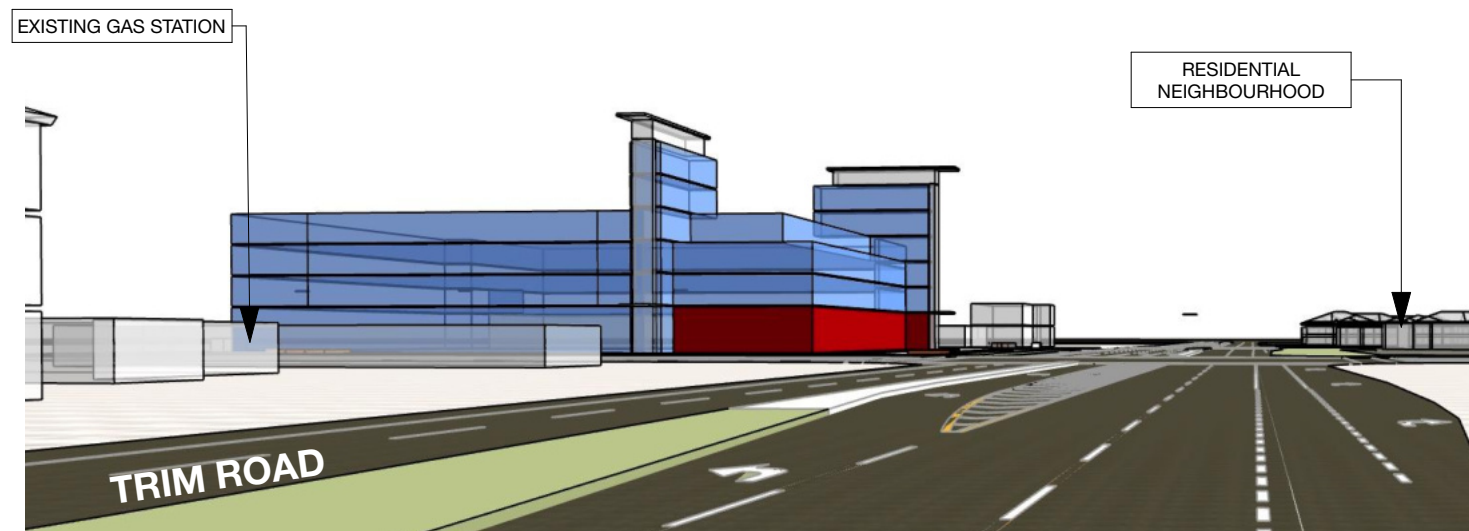
job number
1611-31



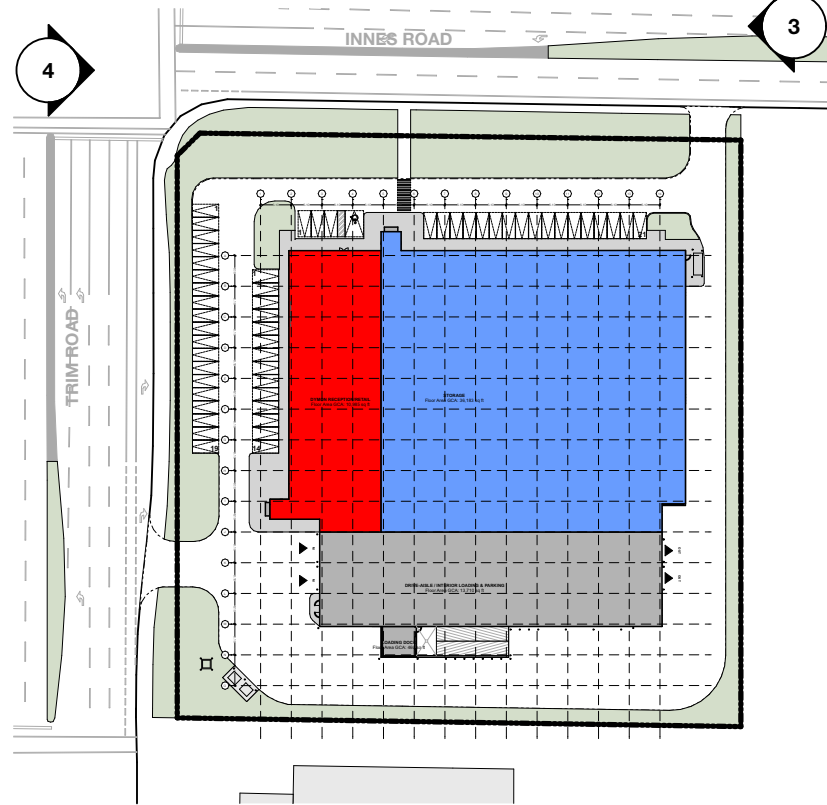
KEY PLAN
SCALE: 1:1500



1. NORTHBOUND DRIVING VIEW ON TRIM ROAD



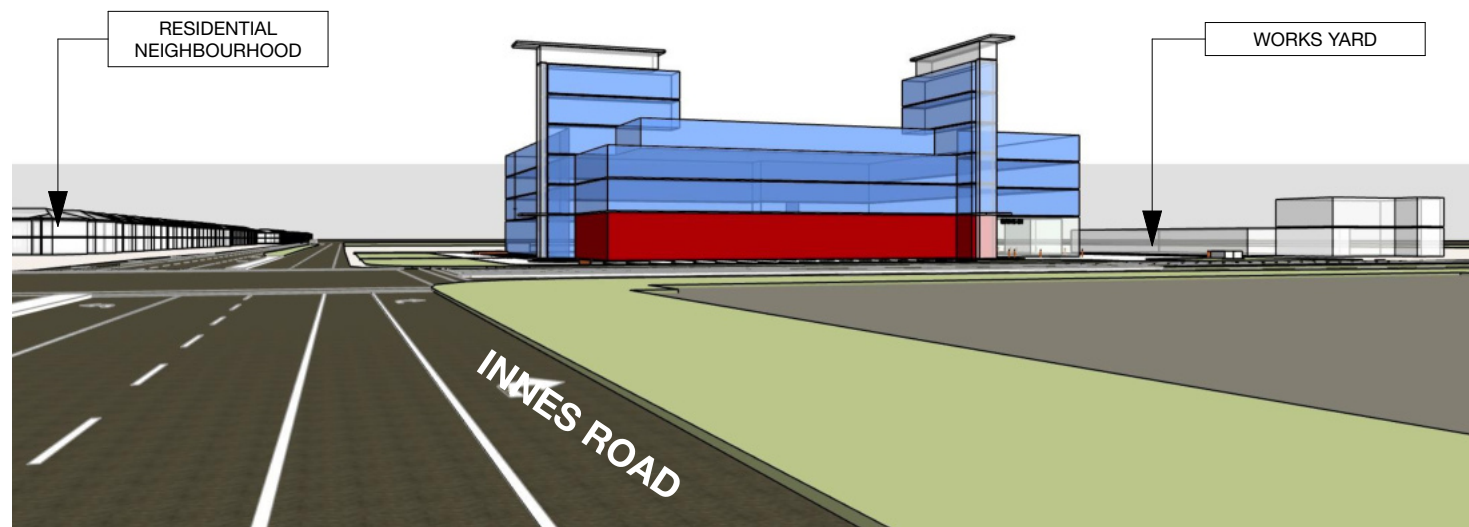
2. NORTHBOUND DRIVING VIEW ON TRIM ROAD



KEY PLAN
SCALE: 1:1500



3. WESTBOUND DRIVING VIEW ON INNES ROAD



4. EASTBOUND DRIVING VIEW ON INNES ROAD

SCHEME 1

- DYMON**
- Reception/Retail
 - Office
 - Self-Storage
 - Loading/Other

TACT Architecture Inc.

660R College Street [Rear Lane]
Toronto Ontario M6G 1B8
416-516-1949
www.tactarchitecture.com

Note: This drawing and all copyright therein are the sole and exclusive property of TACT Architecture Inc. Reproduction or use of this drawing in whole or in part by any means or in any way whatsoever without the prior written consent of TACT Architecture is strictly prohibited. Do not scale this drawing. Print date: Friday, December 23, 2022.

file: 1611-41 Ottawa - 5210 Innes Road V_3.pln

job title
5210 Innes Road

client
Dymon Capital Corporation

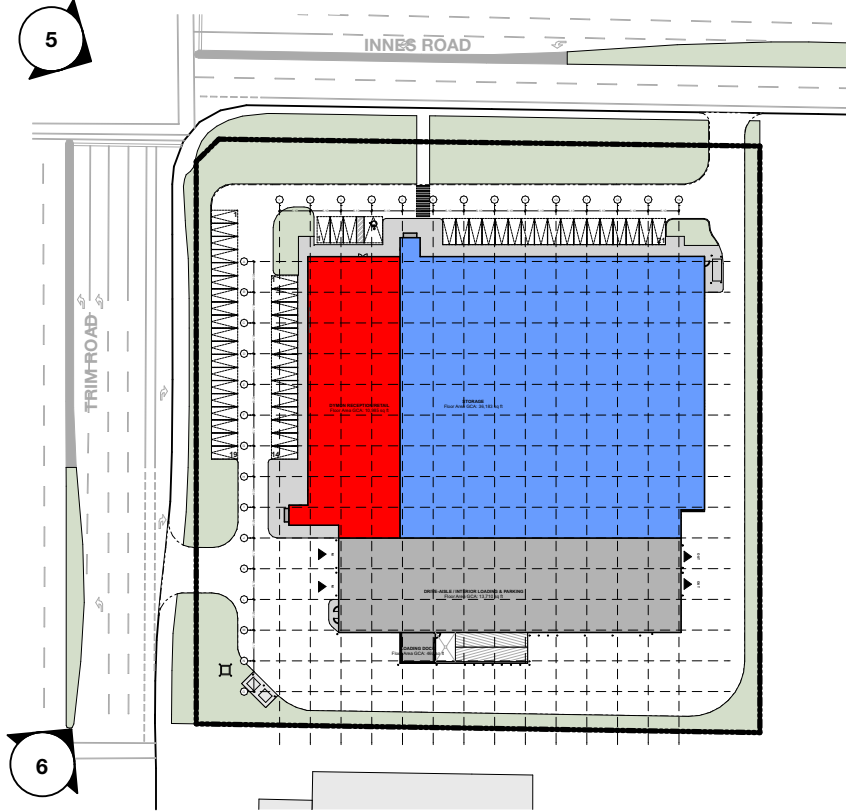
sheet title
VIEWS

drawn by **ST, NS, DW** checked by **PJ**

issue date
Friday, December 23, 2022

scale

job number
1611-31



KEY PLAN
SCALE: 1:1500



5. PERSPECTIVE VIEW FROM THE INTERSECTION OF INNESROAD & TRIM ROAD



6. PERSPECTIVE VIEW FROM TRIM ROAD

SCHEME 1

- DYMON**
- Reception/Retail
 - Office
 - Self-Storage
 - Loading/Other

TACT Architecture Inc.

660R College Street [Rear Lane]
Toronto Ontario M6G 1B8
416-516-1949
www.tactarchitecture.com

Note: This drawing and all copyright therein are the sole and exclusive property of TACT Architecture Inc. Reproduction or use of this drawing in whole or in part by any means or in any way whatsoever without the prior written consent of TACT Architecture is strictly prohibited. Do not scale this drawing. Print date: Friday, December 23, 2022.

file: 1611-41 Ottawa - 5210 Innes Road V_3.pln

job title
5210 Innes Road

client
Dymon Capital Corporation

sheet title
VIEWS

drawn by **ST, NS, DW** checked by **PJ**

issue date
Friday, December 23, 2022

scale

job number
1611-31



TACT Architecture Inc.

660R College Street [Rear Lane]
Toronto Ontario M6G 1B8
416-516-1949
www.tactarchitecture.com

Note: This drawing and all copyright therein are the sole and exclusive property of TACT Architecture Inc. Reproduction or use of this drawing in whole or in part by any means or in any way whatsoever without the prior written consent of TACT Architecture is strictly prohibited. Do not scale this drawing. Print date: Friday, December 23, 2022.

file: 1611-41 Ottawa - 5210 Innes Road V_3.pln

job title

5210 Innes Road

client

Dymon Capital Corporation

sheet title

Render 1

drawn by

ST, NS, DW

checked by

PJ

issue date

Friday, December 23, 2022

scale

job number

1611-31



TACT Architecture Inc.

660R College Street [Rear Lane]
Toronto Ontario M6G 1B8
416-516-1949
www.tactarchitecture.com

Note: This drawing and all copyright therein are the sole and exclusive property of TACT Architecture Inc. Reproduction or use of this drawing in whole or in part by any means or in any way whatsoever without the prior written consent of TACT Architecture is strictly prohibited. Do not scale this drawing. Print date: *Friday, December 23, 2022.*

file: 1611-41 Ottawa - 5210 Innes Road V_3.pln

job title

5210 Innes Road

client

Dymon Capital Corporation

sheet title

Render 2

drawn by

ST, NS, DW

checked by

PJ

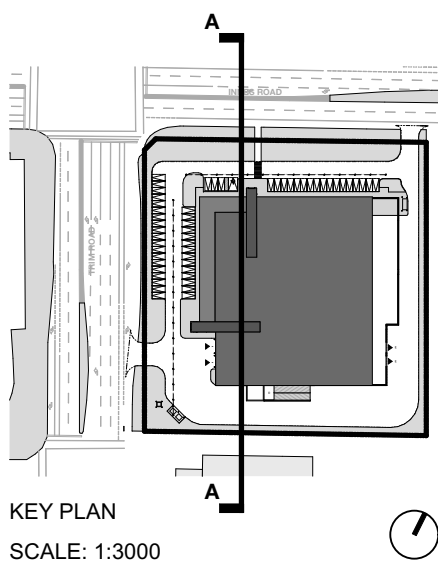
issue date

Friday, December 23, 2022

scale

job number

1611-31



- DYMON**
- Reception/Retail
 - Office
 - Self-Storage
 - Loading/Other

TACT Architecture Inc.

660R College Street [Rear Lane]
Toronto Ontario M6G 1B8
416-516-1949
www.tactarchitecture.com

Note: This drawing and all copyright therein are the sole and exclusive property of TACT Architecture Inc. Reproduction or use of this drawing in whole or in part by any means or in any way whatsoever without the prior written consent of TACT Architecture is strictly prohibited. Do not scale this drawing. Print date: Friday, December 23, 2022.

file: 1611-41 Ottawa - 5210 Innes Road V_3.pln

job title
5210 Innes Road

client
Dymon Capital Corporation

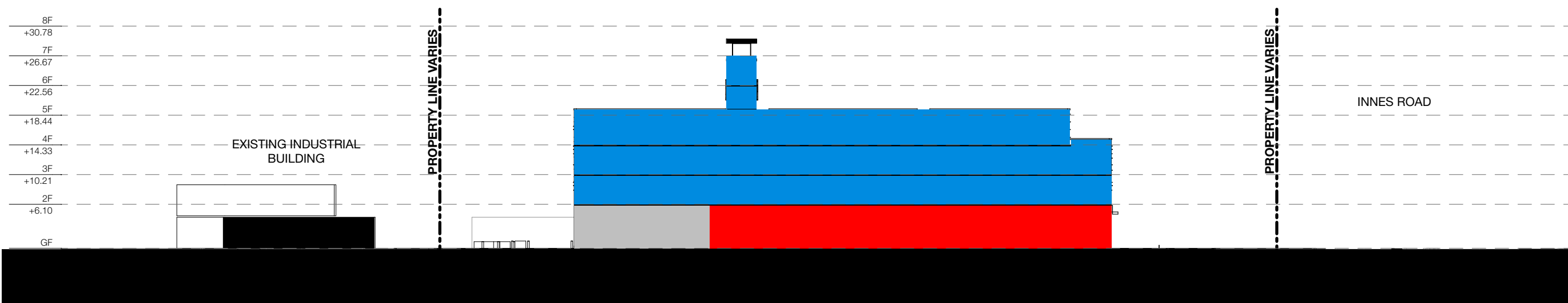
sheet title
Section

drawn by **ST, NS, DW** checked by **PJ**

issue date
Friday, December 23, 2022

scale
1:600

job number
1611-31



A-A STREETScape SECTION