

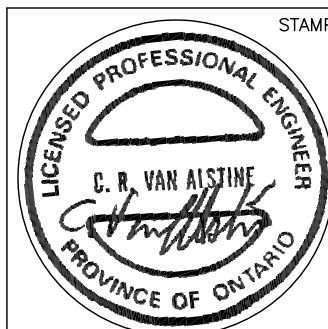
Note:

1. All dimensions and conditions must be verified on site.
2. Reproduction of this drawing is not permitted without the written authorization of EVEREST ENGINEERING LIMITED.
3. Drawings are not to be used for construction or pricing unless signed by the Engineer and labelled "ISSUED FOR CONSTRUCTION"

PROJECT

WHELAN TRUCK REPAIR
BUILDING ADDITION

158 CARDEVCO ROAD, OTTAWA ONTARIO



STAMP



15 Bass Road, Lombardy, Ontario K0G 1L0
(613) 831-5454 Email: everestengineering@bellnet.ca

MECHANICAL & ELECTRICAL
CONSULTING ENGINEERS

SCALE 1:75		DRAWN BY C.V.A.	
DATE AUGUST 2024		CHECKED BY G.L.	
5	ISSUED FOR SITE PLAN COORD.	NOV 21/24	
NO.	REVISION/ISSUE	DATE	
DRAWING NUMBER MSK-1			REV. NO.

4

3

2

1

D

D

C

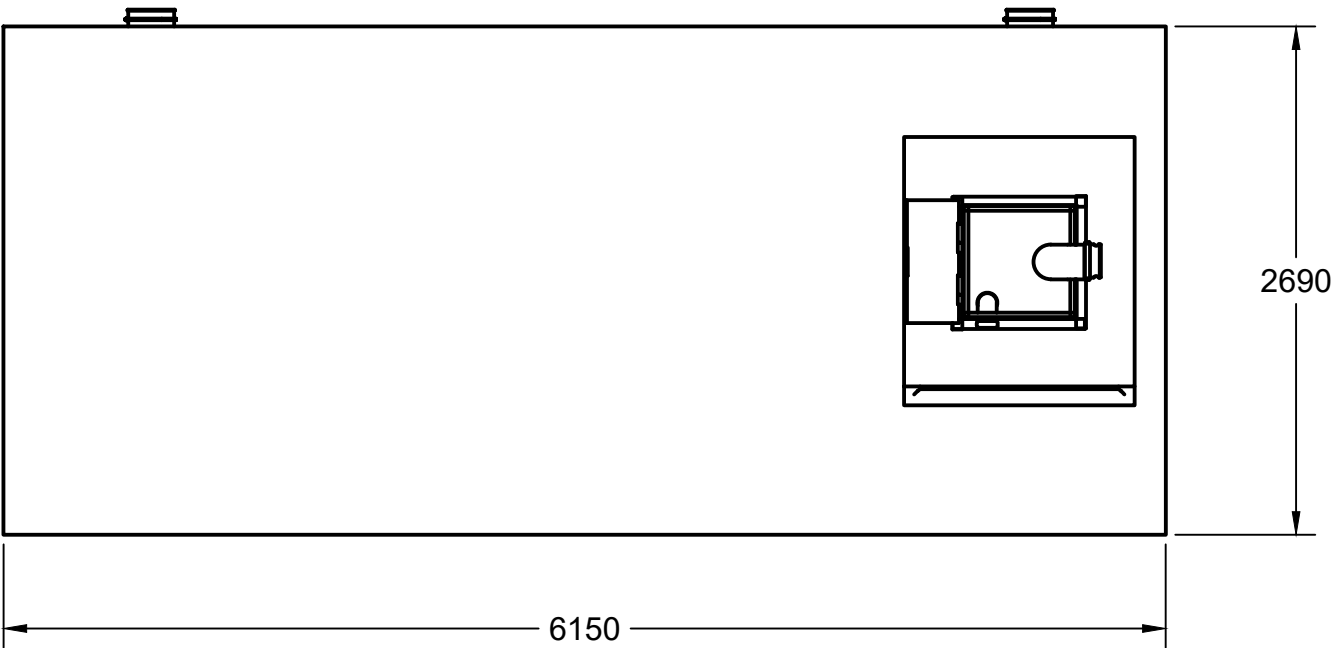
C

B

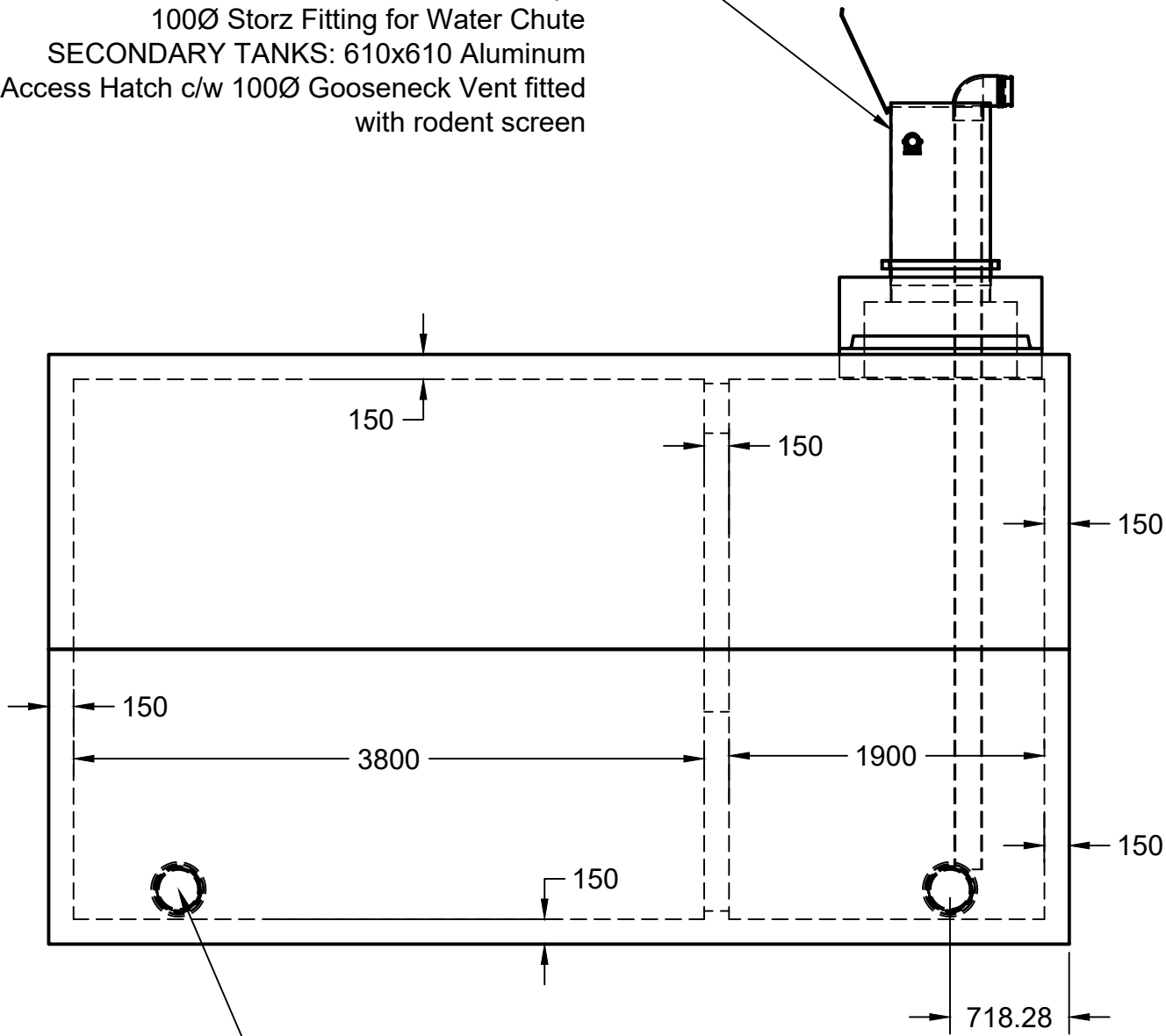
B

A

A



PRIMARY TANK: 610x610 City of Ottawa Spec
Fire Chute w/ 150Ø Female Dry Hydrant and
Drawdown Pipe
100Ø Storz Fitting for Water Chute
SECONDARY TANKS: 610x610 Aluminum
Access Hatch c/w 100Ø Gooseneck Vent fitted
with rodent screen



2- 200Ø Interconnection Bootseals
For Multiple Tank Cluster Systems

TOTAL VOLUME: 45000L

CONCRETE: 35MPa WITH 5-8% AIR ENTRAINMENT
NON SULPHATE RESISTANT

REINFORCING: GRADE 400W CONFORMING TO CSA G30.18
15M @ 200mm ON CENTRE EACH WAY
ADDITIONAL 15M AROUND PERIMETER AT SEAM BETWEEN SECTIONS
15M x900mm ON DIAGONAL AT EACH CORNER OF LID OPENING

WEIGHT: TOP SECTION 17500KGS
BOTTOM SECTION 17500KGS
TOTAL 35000KGS

MAXIMUM BURIAL DEPTH: 1200MM OF GROUND COVER IN AREA OF
NON-VEHICULAR TRAFFIC

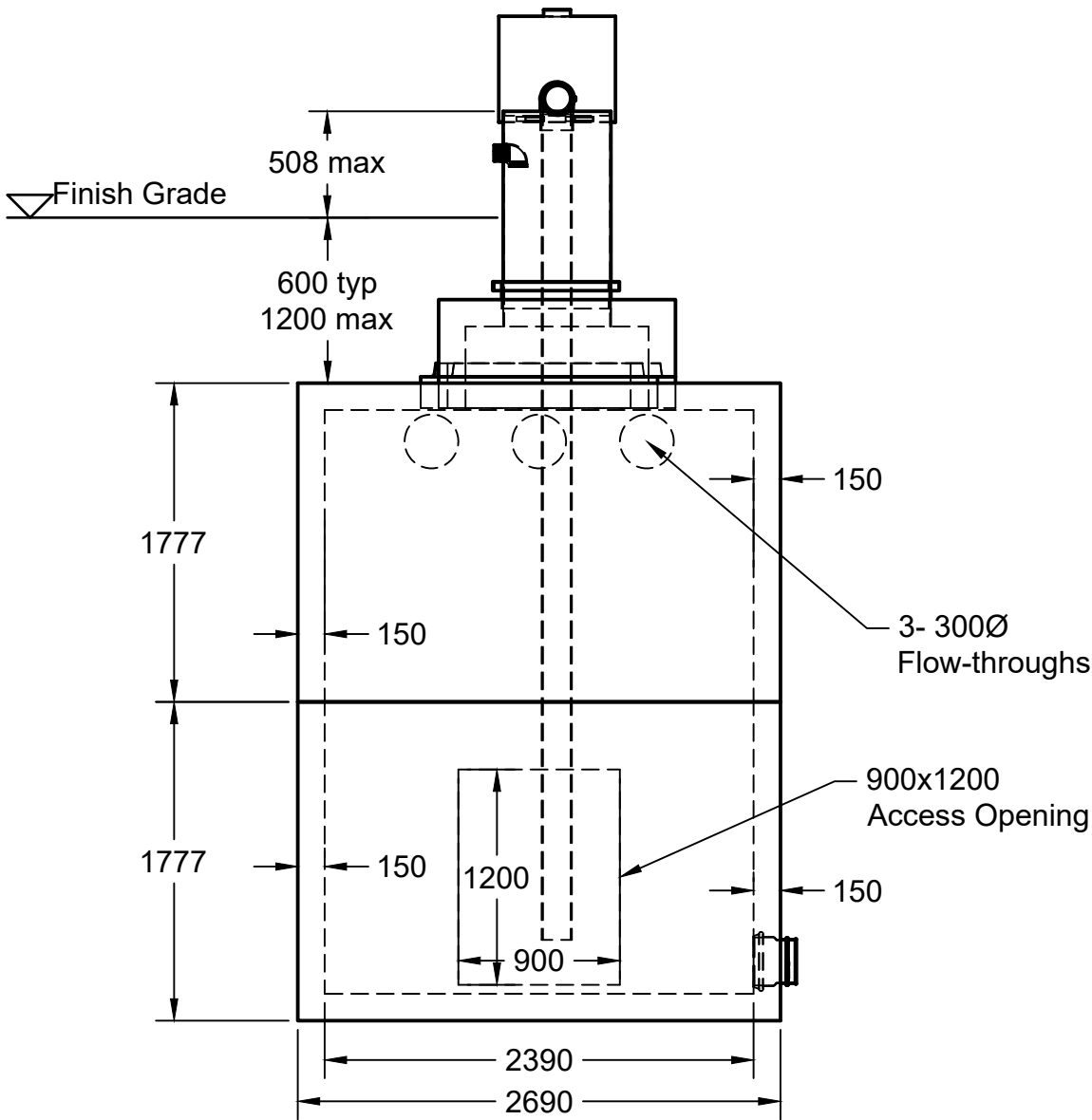
WATER TIGHTNESS: 2X ROWS CON-SEAL CS-102 MASTIC SEALANT BETWEEN
SECTIONS. SEALANT APPLIED ONSITE BY BOYD BROS CONCRETE ACCORDING TO
MANUFACTURER'S RECOMMENDED METHOD

PIPE/WALL CONNECTIONS: 200mmØ Flexible Rubber Bootseal for PVC Supply Line

ACCESS OPENINGS:
PRIMARY TANK: 610X610 CITY OF OTTAWA SPEC FIRE CHUTE FOR FIRETRUCK
CONNECTION
SECONDARY ACCESS (OPTIONAL) :1200x1300 CAST-IN RISER FLANGE WITH 610X610
DRIP PROOF ALUMINUM ACCESS HATCH
900X1200 OPENING IN DIVIDER WALL FOR ACCESS TO BOTH CHAMBERS FROM ONE
ACCESS POINT

OPTIONAL STAINLESS STEEL BOLT-ON LADDER OPTIONAL

TANK DESIGN CONFORMS TO CSA STANDARD B66-15



5450 Cuddy St Osgoode, ON K0A 2W0
tel: (613) 826.2318 fax: (613) 826.3679
toll free: 888.846.6664
website: www.boydbrosconcrete.ca
email: info@boydbrosconcrete.ca

PROJECT		
Boyd Bros Concrete		
TITLE		
45000 Fire Tank		
DRAWN Rob Sanna 6/19/23 APPROVED		
SIZE	DWG NAME	REV
C	45000 Fire Tank	2
SCALE 1:40	WEIGHT 35000kgs	SHEET 1/1

4

3

2

1

4

3

2

1

NOTES:

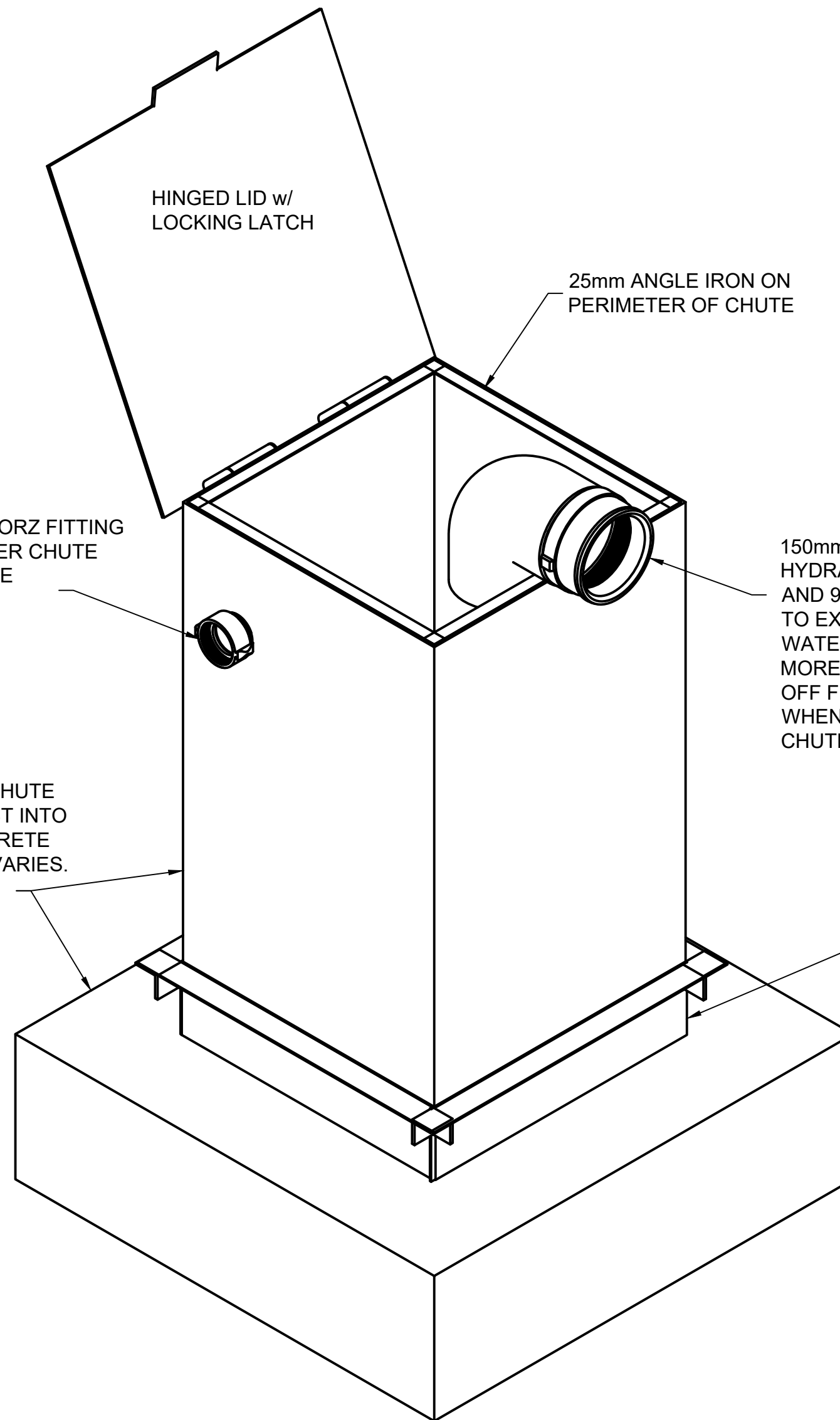
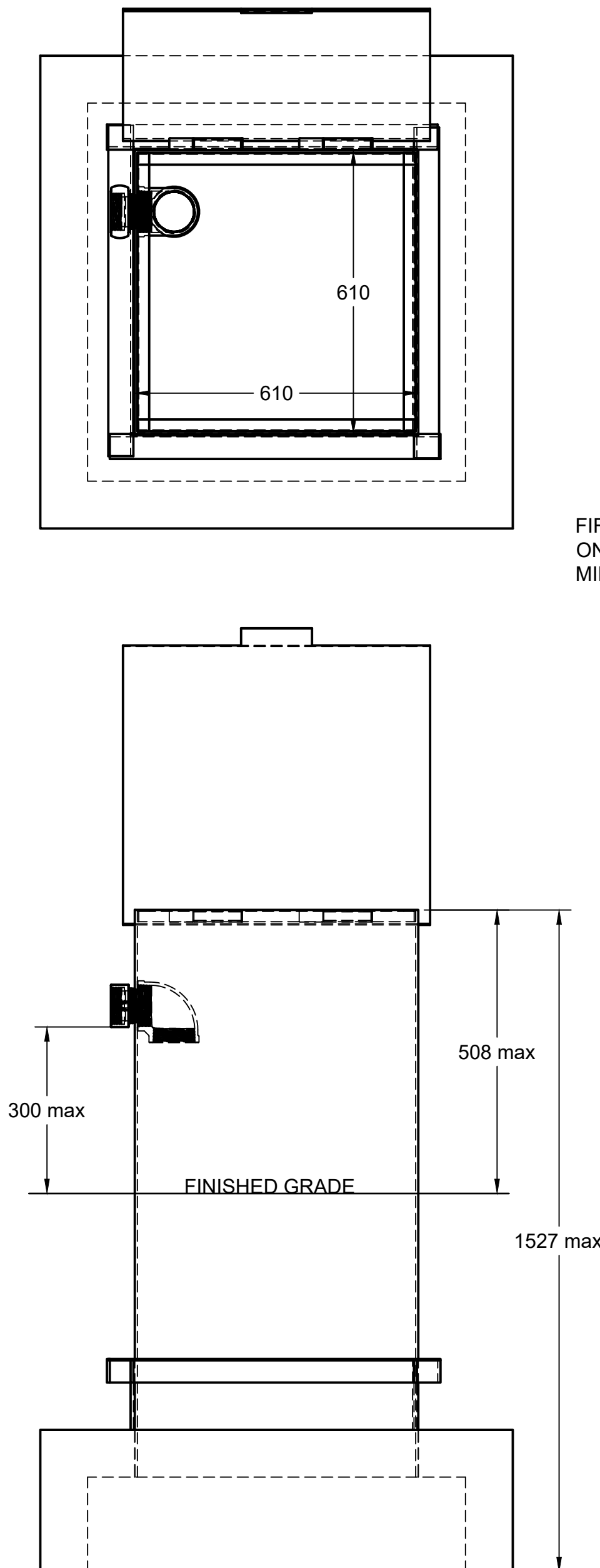
ALL STEEL PLATE 3mm

PAINT " SAFETY BLUE" TREMCLAD MEDIUM BLUE

FILL PIPE FITTING: 100mm STORZ FITTING ON OUTER SIDE OF CHUTE c/w 90° ELBOW TO DIRECT WATER DOWNWARDS.

SUCTION PIPE: 150mm FEMALE DRY HYDRANT w/ PLUG AND 90° SCH40 PVC ELBOW. c/w U-BOLT AND U-CHANNEL TRACK FOR MOUNTING ON LEDGE OF CHUTE

OVERALL HEIGHT OF CHUTE DEPENDANT ON LOCATION UP TO A MAX HEIGHT OF 1727mm. TOP OF CHUTE SHALL NOT EXCEED 508MM ABOVE GRADE.

HINGED LID w/
LOCKING LATCH25mm ANGLE IRON ON
PERIMETER OF CHUTE150mm FEMALE DRY
HYDRANT W/ PLUG
AND 90°. SCH40 PIPE
TO EXTEND INTO
WATERLEVEL TO NO
MORE THEN 300mm
OFF FLOOR OF TANK
WHEN INSTALLED ON
CHUTE.FIRE FITTING - 100mm STORZ FITTING
ON OUTER SIDE OF WATER CHUTE
MIN 300mm ABOVE GRADE610X610 STEEL CHUTE
INTEGRALLY CAST INTO
1270X1170 CONCRETE
RISER. HEIGHT VARIES.BOTTOM 150mm OF CHUTE
IS DOUBLE WALL WITH
50mmX50mm ANGLE IRON
ON TOP.**bb boyd bros**
concrete products5450 Cuddy St Osgoode, ON K0A 2W0
tel: (613) 826.2318 fax: (613) 826.3679
toll free: 888.846.6664
website: www.boydbrosconcrete.ca
email: info@boydbrosconcrete.ca

PROJECT

FIRE CHUTE

TITLE

Fire Chute - City of Ottawa

DRAWN Rob Sanna 6/20/19 APPROVED

SIZE

C

DWG NAME

FIRE CHUTE - CITY OF OTTAWA

REV

1

SCALE 1:10

WEIGHT

SHEET 1/1

4

3

2

1

4

3

2

1

D

D

C

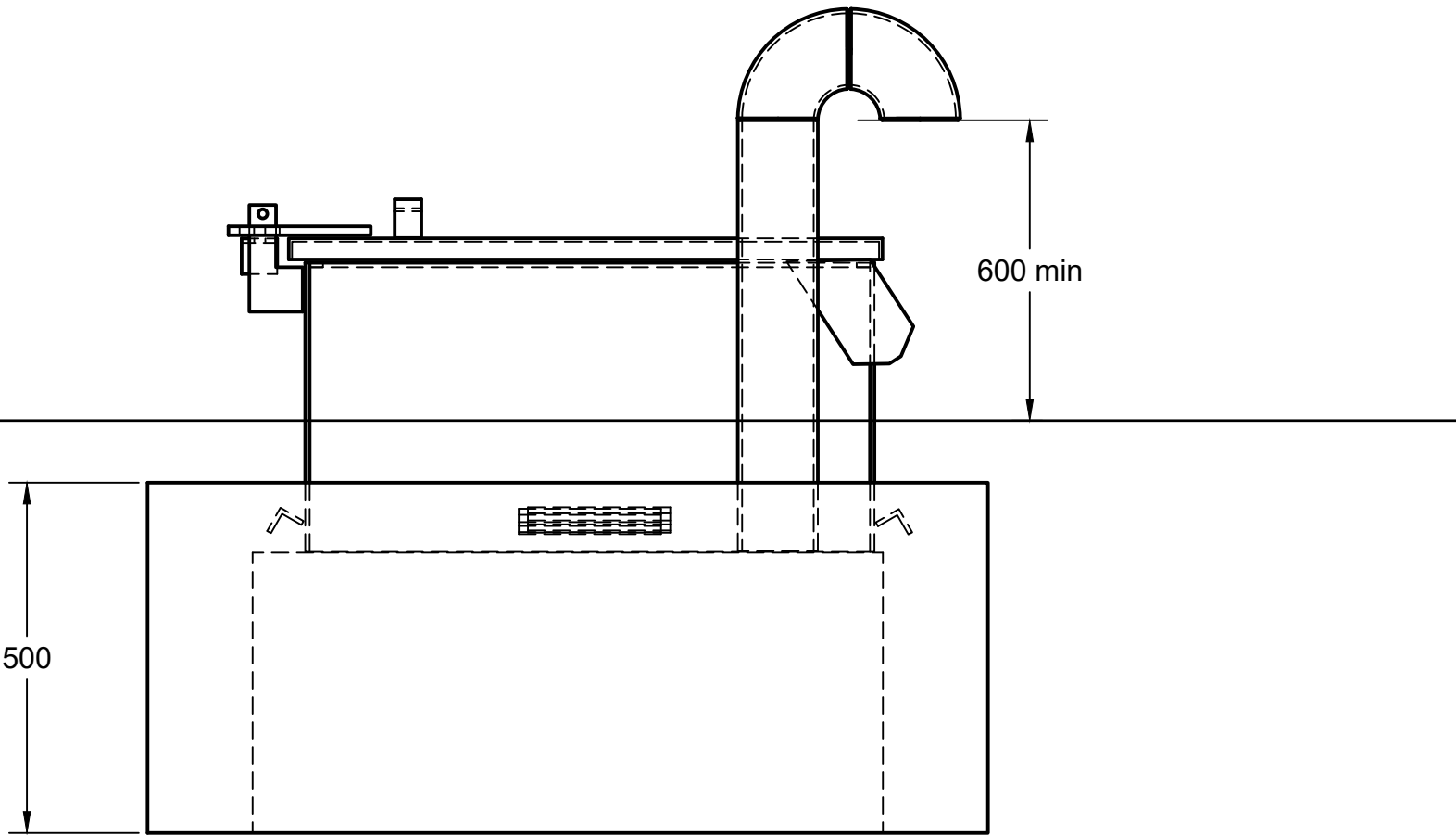
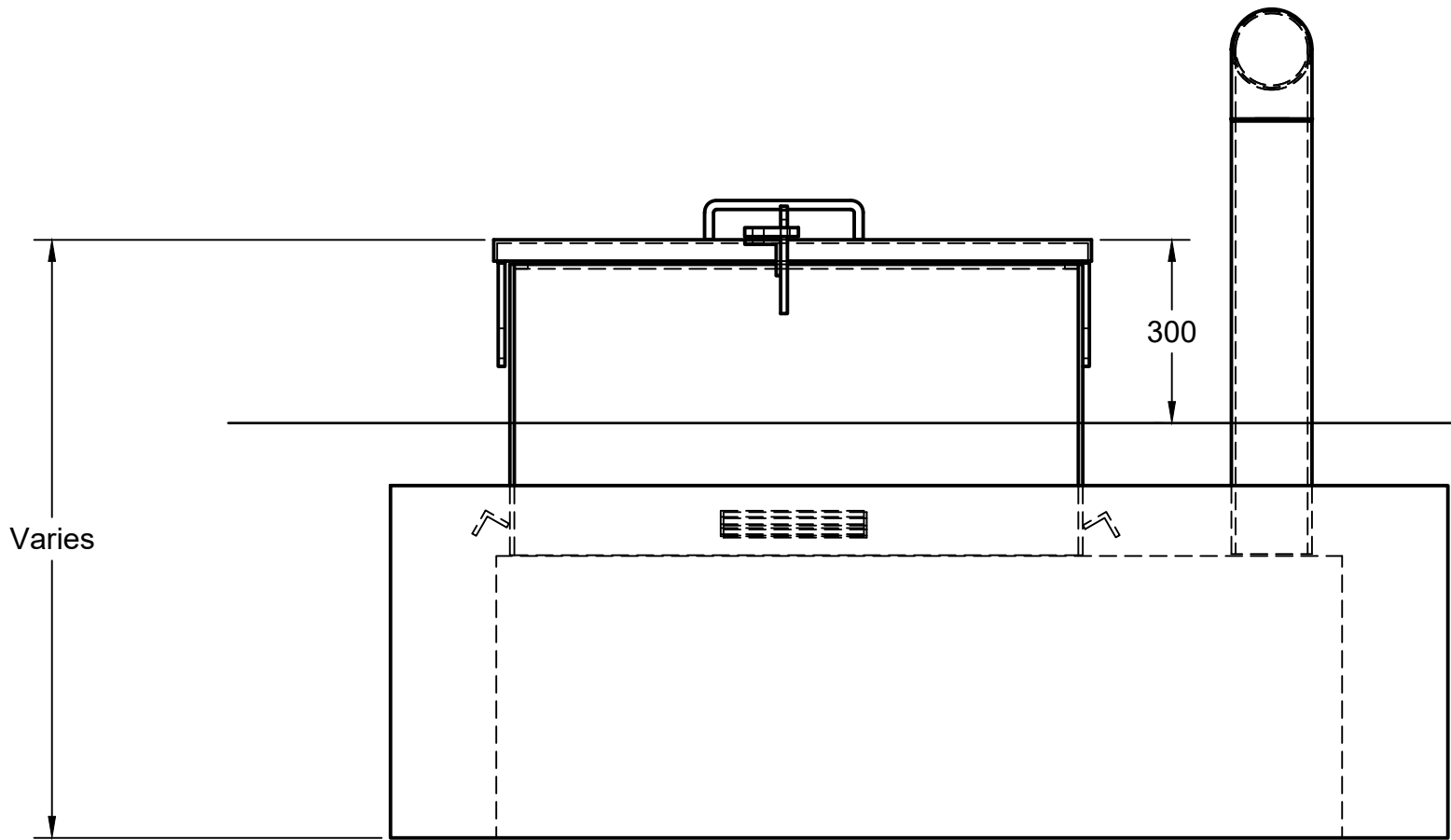
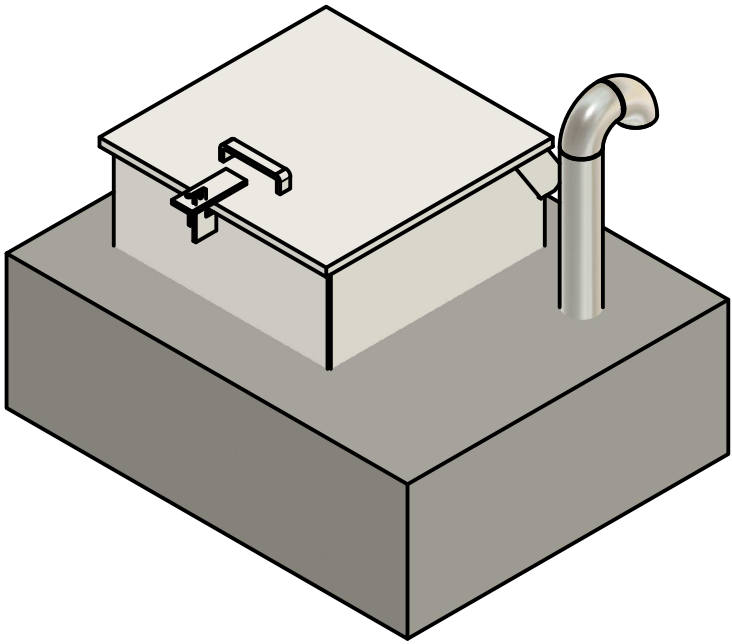
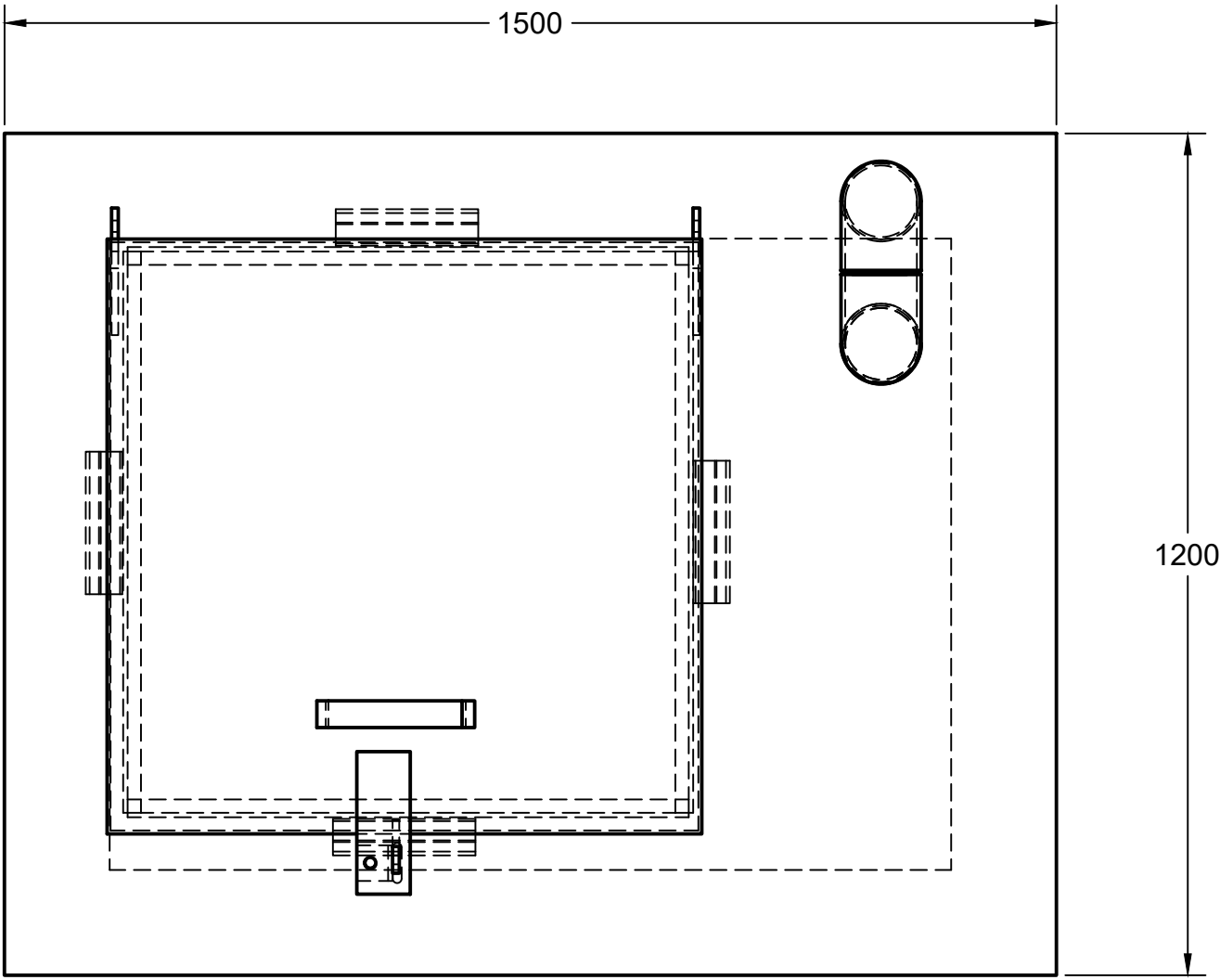
C

B

B

A

A



FINISHED GRADE

bb boyd bros
concrete products

5450 Cuddy St Osgoode, ON K0A 2W0
tel: (613) 826.2318 fax: (613) 826.3679
toll free: 888.846.6664
website: www.boydbrosconcrete.ca
email: info@boydbrosconcrete.ca

PROJECT			
Fire Reservoir - Secondary Tank			
TITLE			
Sample Riser w Vent			
DRAWN Rob Sanna 2021-01-27 APPROVED			
SIZE	DWG NAME		REV
C			
SCALE 1:10	WEIGHT	SHEET 1/1	

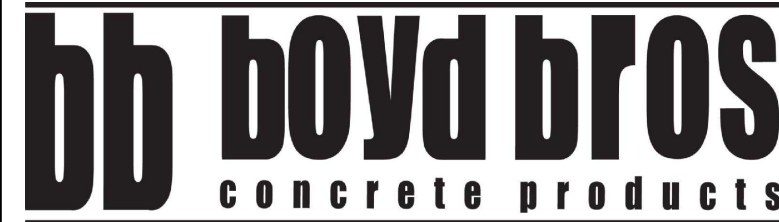
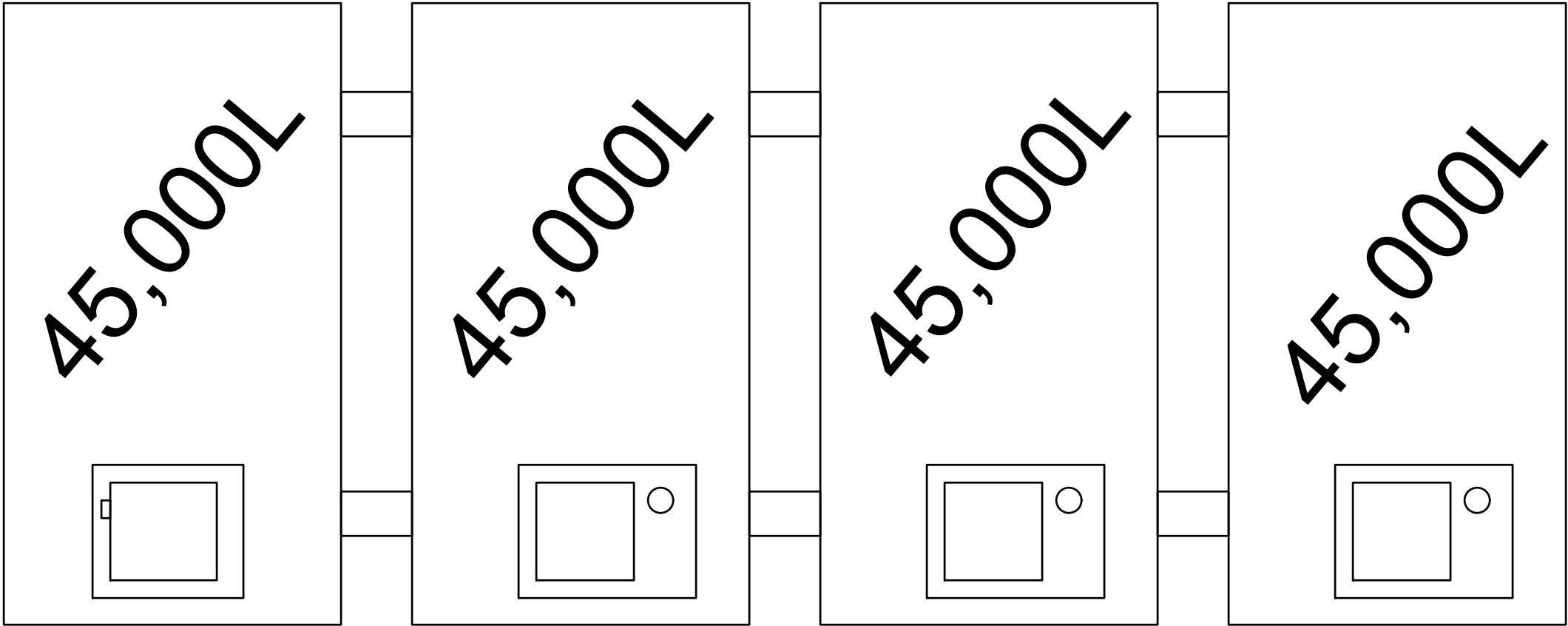
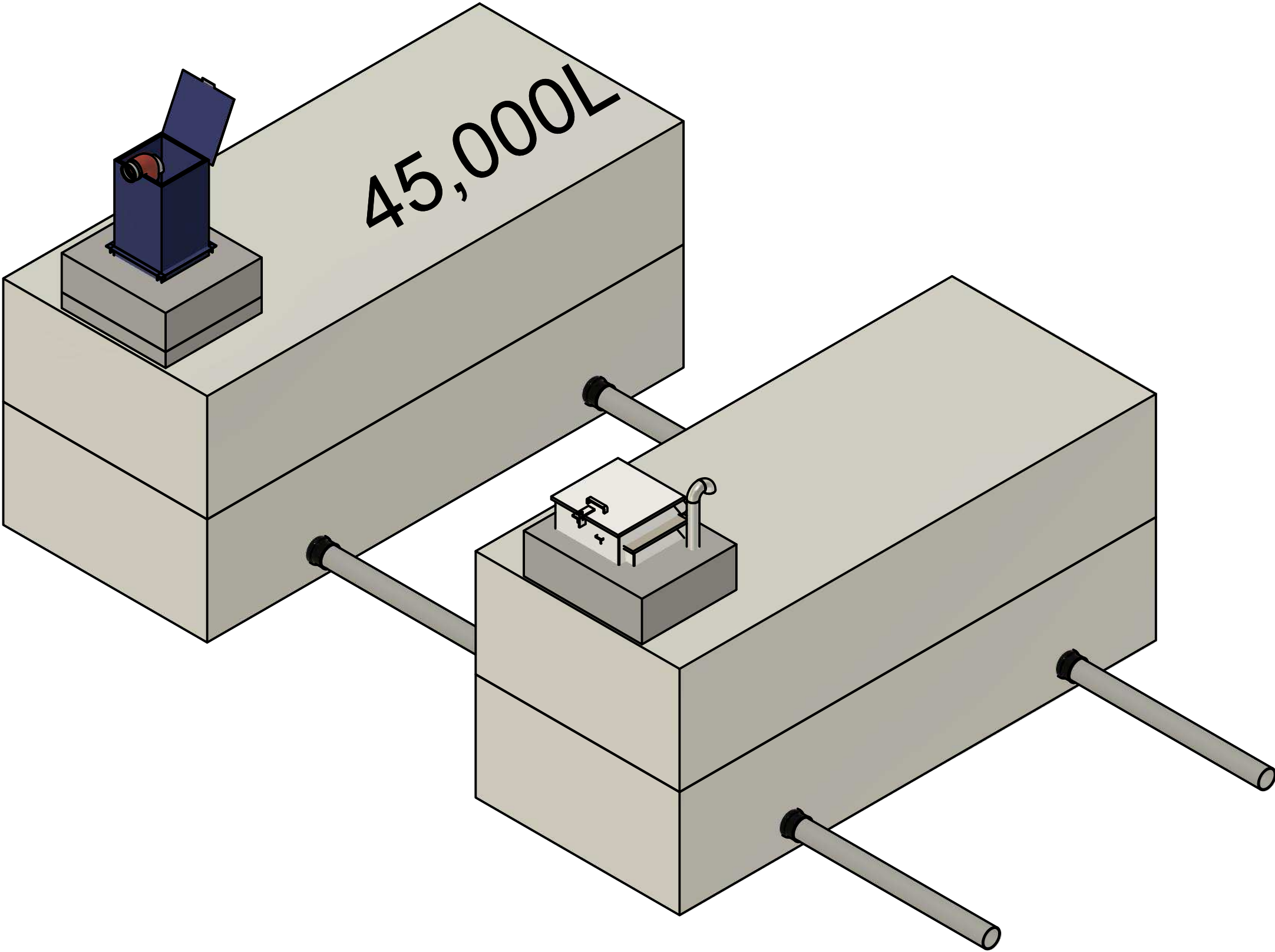
4

3

2

1

TYPICAL TANK INTERCONNECTION



5450 Cuddy St Osgoode, ON K0A 2W0
tel: (613) 826.2318 fax: (613) 826.3679
toll free: 888.846.6664
website: www.boydbrosconcrete.ca
email: info@boydbrosconcrete.ca

PROJECT			Admin Project		
TITLE			Fire Reservoir - Typical Install		
DRAWN Rob Sanna 2/11/21 APPROVED					
SIZE	DWG NAME				REV
C					
SCALE 1:50	WEIGHT		SHEET 1/1		