

Copyright Reserved

The Contractor shall verify and be responsible for all dimensions. DO NOT scale the drawing - any errors or omissions shall be reported to Stantec without delay.
The Copyrights to all designs and drawings are the property of Stantec. Reproduction or use for any purpose other than that authorized by Stantec is forbidden.

Legend

- PROPOSED SILT FENCE BOUNDARY AS PER OPSD 219.110
- PROPOSED CATCH BASIN PROTECTION AS PER FLEX STORM INLET FILTERS DETAIL. ITEM CODE P-RD-240-223-FX
- PROPOSED CATCH BASIN PROTECTION AS PER FLEX STORM INLET FILTERS DETAIL. ITEM CODE P-RD-290-270-FX
- PROPOSED CATCH BASIN PROTECTION AS PER TERRAFIX SILTSACK DETAIL
- PROPOSED MUD MAT LOCATION
- PROPOSED VALVE BOX
- PROPOSED VALVE CHAMBER
- PROPOSED FIRE HYDRANT
- PROPOSED SANITARY SEWER MANHOLE
- PROPOSED STORM SEWER MANHOLE
- PROPOSED CATCH BASIN MANHOLE
- PROPOSED CATCH BASIN

Best Management Practices

CONTRACTOR TO PROVIDE EROSION AND SEDIMENT CONTROLS (BEST MANAGEMENT PRACTICES) DURING CONSTRUCTION OF THIS PROJECT.

EROSION MUST BE MINIMIZED AND SEDIMENTS MUST BE REMOVED FROM CONSTRUCTION SITE RUNOFF IN ORDER TO PROTECT DOWNSTREAM AREAS. DURING ALL CONSTRUCTION, EROSION AND SEDIMENTATION SHOULD BE CONTROLLED BY THE FOLLOWING TECHNIQUES:

1. LIMIT THE EXTENT OF EXPOSED SOILS AT ANY GIVEN TIME.
2. REVEGETATE EXPOSED AREAS AND SLOPES AS SOON AS POSSIBLE.
3. MINIMIZE AREA TO BE CLEARED AND GRUBBED.
4. PROTECT EXPOSED SLOPES WITH PLASTIC OR SYNTHETIC MULCHES.
5. INSTALL CATCH BASIN INSERTS OR EQUIVALENT IN ALL PROPOSED CATCH BASINS AND CATCH BASIN MANHOLES AND IN ALL EXISTING CATCH BASINS THAT WILL RECEIVE RUN-OFF FROM THE SITE.
6. A SILT FENCE SHALL BE INSTALLED AROUND THE PERIMETER OF ALL AND ANY STOCKPILES OF MATERIAL TO BE USED OR REMOVED FROM SITE. LOCATION TO BE DETERMINED.
7. A VISUAL INSPECTION SHALL BE DONE DAILY AND FOLLOWING ALL RAINFALL EVENTS ON SEDIMENT CONTROL MEASURES AND CLEANED OF ANY ACCUMULATED SILT AS REQUIRED. THE DEPOSITS WILL BE DISPOSED OFF SITE AS PER THE REQUIREMENTS OF THE CONTRACT.
8. SEDIMENT CONTROL BARRIERS MAY ONLY BE REMOVED TEMPORARILY WITH APPROVAL OF CONTRACT ADMINISTRATOR TO ACCOMMODATE CONSTRUCTION OPERATIONS. ALL AFFECTED BARRIERS MUST BE REINSTITATED AT NIGHT WHEN CONSTRUCTION IS COMPLETED. NO REMOVAL WILL OCCUR IF THERE IS A SIGNIFICANT RAINFALL EVENT ANTICIPATED (>10mm) UNLESS A NEW DEVICE HAS BEEN INSTALLED TO PROTECT EXISTING STORM AND SANITARY SEWER SYSTEMS, OR DOWNSTREAM WATERCOURSES. NO REFUELING OR CLEANING OF EQUIPMENT IS PERMITTED NEAR ANY EXISTING WATERWAY.
9. CONTRACTOR SHALL REMOVE SEDIMENT MEASURES WHEN, IN THE OPINION OF THE CONTRACT ADMINISTRATOR, THE MEASURES IS NO LONGER REQUIRED. NO CONTROL MEASURES SHALL BE PERMANENTLY REMOVED WITHOUT PRIOR WRITTEN AUTHORIZATION FROM THE CONTRACT ADMINISTRATOR.
10. THE CONTRACTOR SHALL PERIODICALLY, OR WHEN REQUESTED BY THE CONTRACT ADMINISTRATOR, CLEAN OUT ACCUMULATED SEDIMENTS AS REQUIRED.
11. THE CONTRACTOR SHALL IMMEDIATELY REPORT TO THE ENGINEER ANY ACCIDENTAL DISCHARGES OF SEDIMENT MATERIAL INTO THE WATERCOURSE. APPROPRIATE RESPONSE MEASURES, INCLUDING ANY REPAIRS TO EXISTING CONTROL MEASURES OR THE IMPLEMENTATION OF ADDITIONAL CONTROL MEASURES, SHALL BE CARRIED OUT BY THE CONTRACTOR WITHOUT DELAY.
12. CONTRACTOR SHALL INSTALL MUD MATS AT ENTRANCE TO THE SITE.
13. STORMWATER SWALES TO BE COVERED WITH HYDRO-SEED AND MULCH.
14. THE CONTRACTOR IS RESPONSIBLE TO KEEP THE ROADS FREE AND CLEAN FROM MUD AND DEBRIS.
15. THE SEDIMENT AND EROSION CONTROL MEASURES MAY BE MODIFIED IN THE FIELD AT THE DISCRETION OF THE CITY OF OTTAWA SITE INSPECTOR OR CONSERVATION AUTHORITY.

Revision	By	Appd.	Y/M/MD
6	ISSUED FOR SPA AMENDMENT	MJS	DT 22.12.22
4	REVISED AS PER CITY COMMENTS	MJS	DT 22.07.14
3	REVISED AS PER CITY COMMENTS	MJS	DT 22.03.29
4	REVISED AS PER CITY COMMENTS	MJS	TR 21.09.02
2	ISSUED FOR GEOTECH REVIEW	MJS	DT 21.08.03
1	ISSUED TO CITY FOR SPA	MJS	DT 20.05.22

File Name:	MJS	DT	MJS	DT	Y/M/MD
160401511-08					19.09.05

Permit-Seal

Revision	By	Appd.	Y/M/MD
1	ISSUED FOR SPA AMENDMENT	MJS	DT 22.12.22

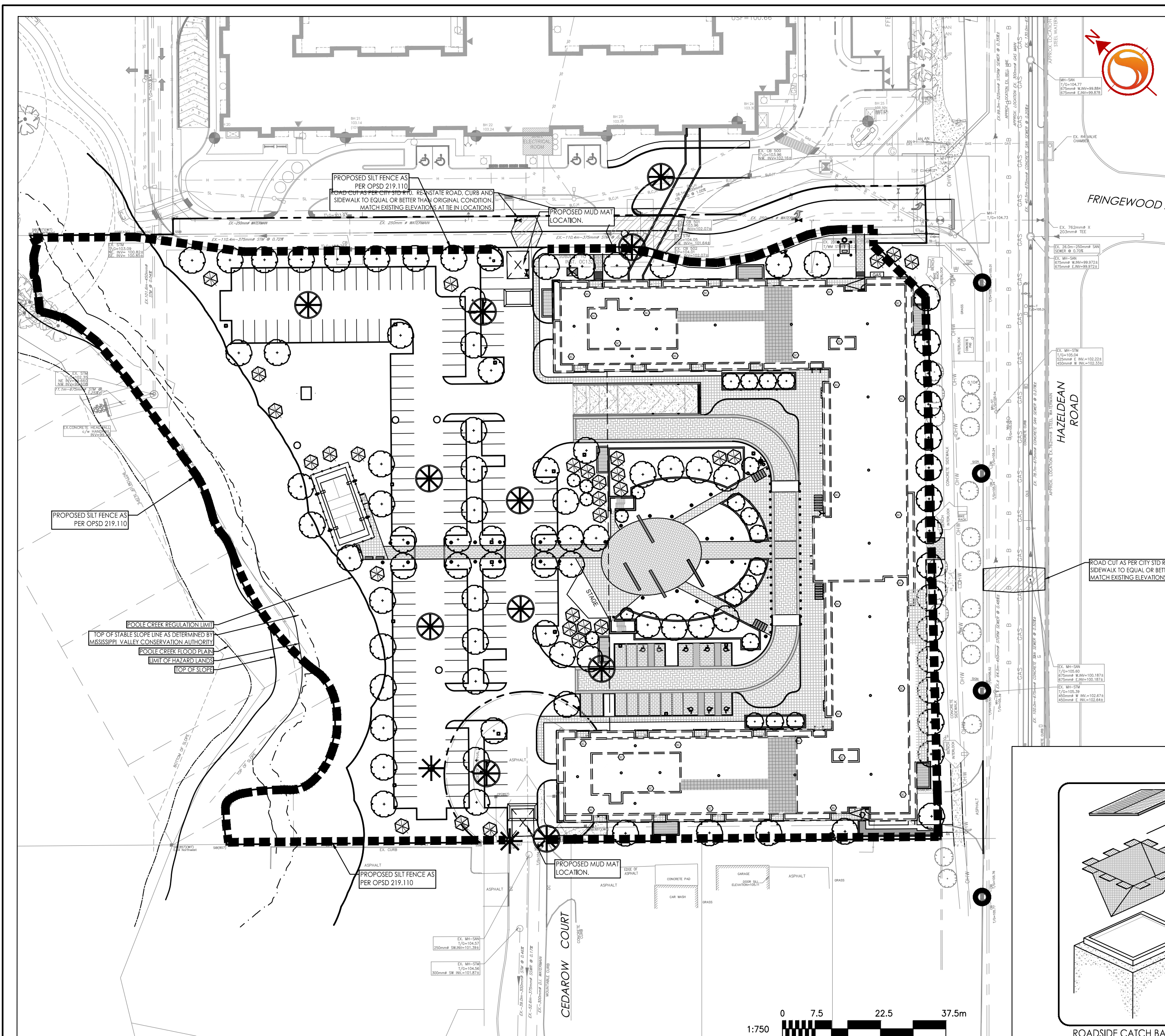
Client/Project

NAUTICAL LANDS GROUP
2962 Carp Road
WELLINGS OF STITTSVILLE PH 2
20 CEDAROW COURT
OTTAWA, ON

Title
EROSION CONTROL PLAN
AND DETAIL SHEET

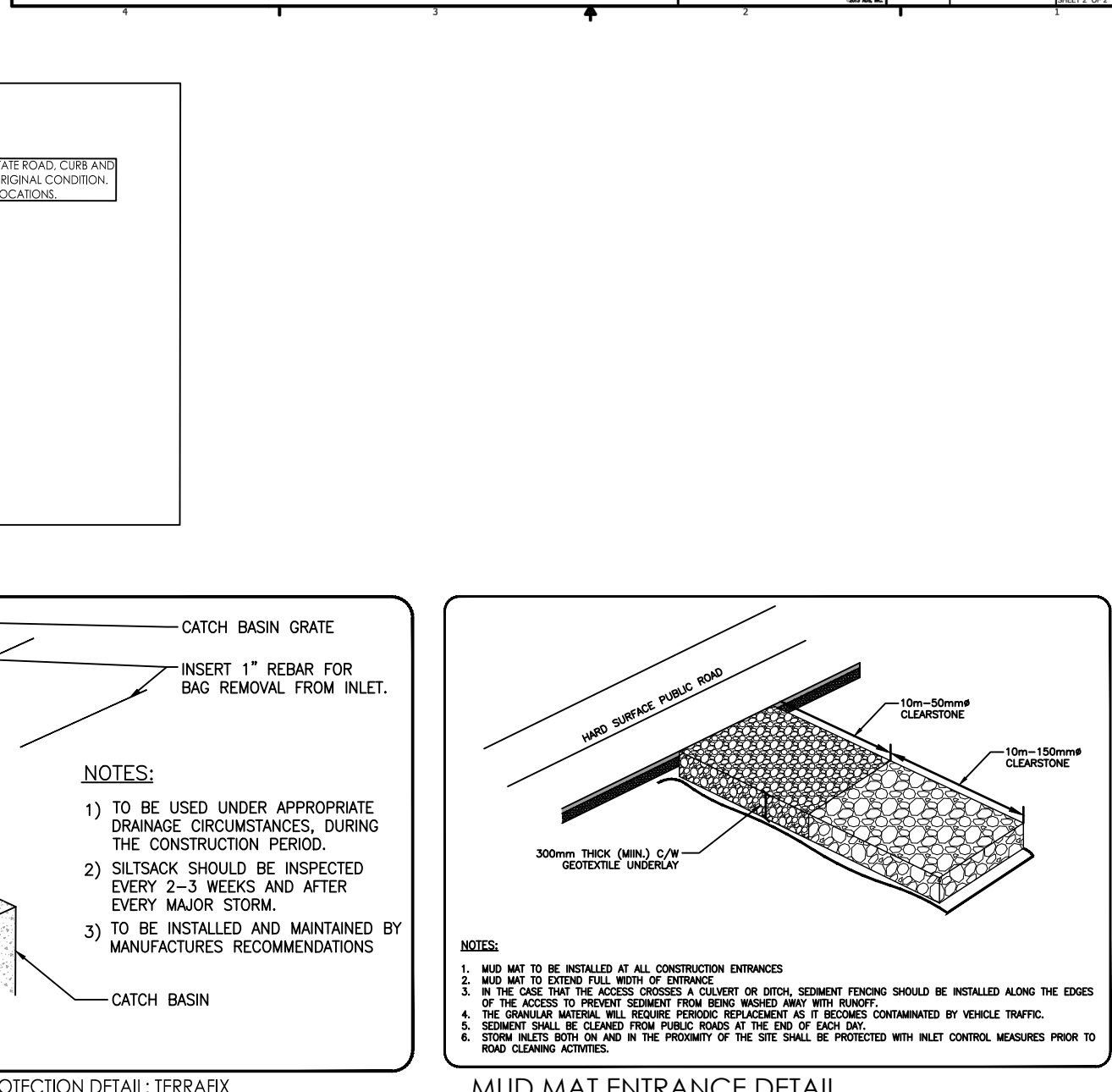
Project No.	Scale
160401511	

Drawing No.	Sheet	Revision
EC/DS-1	5 of 7	6



FLEXSTORM P/Ns 62MHRFX & 62MHRFXP
RD INLET TYPE: RAISED CAST IRON FRAME AND ROUND GRATE

Frame Size (in. x in.)	Frame Material	Grate Material	Grate Size (in. x in.)	Grate Type	Grate Weight (lb)	Frame Weight (lb)	Total Weight (lb)	Part No.
24" x 24"	Cast Iron	Cast Iron	24" x 24"	Standard	15.0	10.0	25.0	62MHRFX-2424
30" x 30"	Cast Iron	Cast Iron	30" x 30"	Standard	22.5	15.0	37.5	62MHRFX-3030
36" x 36"	Cast Iron	Cast Iron	36" x 36"	Standard	30.0	20.0	50.0	62MHRFX-3636
42" x 42"	Cast Iron	Cast Iron	42" x 42"	Standard	37.5	25.0	62.5	62MHRFX-4242
48" x 48"	Cast Iron	Cast Iron	48" x 48"	Standard	45.0	30.0	75.0	62MHRFX-4848
54" x 54"	Cast Iron	Cast Iron	54" x 54"	Standard	52.5	35.0	87.5	62MHRFX-5454
60" x 60"	Cast Iron	Cast Iron	60" x 60"	Standard	60.0	40.0	100.0	62MHRFX-6060
66" x 66"	Cast Iron	Cast Iron	66" x 66"	Standard	67.5	45.0	112.5	62MHRFX-6666
72" x 72"	Cast Iron	Cast Iron	72" x 72"	Standard	75.0	50.0	125.0	62MHRFX-7272
78" x 78"	Cast Iron	Cast Iron	78" x 78"	Standard	82.5	55.0	137.5	62MHRFX-7878
84" x 84"	Cast Iron	Cast Iron	84" x 84"	Standard	90.0	60.0	150.0	62MHRFX-8484
90" x 90"	Cast Iron	Cast Iron	90" x 90"	Standard	97.5	65.0	162.5	62MHRFX-9090
96" x 96"	Cast Iron	Cast Iron	96" x 96"	Standard	105.0	70.0	175.0	62MHRFX-9696
102" x 102"	Cast Iron	Cast Iron	102" x 102"	Standard	112.5	75.0	187.5	62MHRFX-102102
108" x 108"	Cast Iron	Cast Iron	108" x 108"	Standard	120.0	80.0	200.0	62MHRFX-108108
114" x 114"	Cast Iron	Cast Iron	114" x 114"	Standard	127.5	85.0	212.5	62MHRFX-114114
120" x 120"	Cast Iron	Cast Iron	120" x 120"	Standard	135.0	90.0	225.0	62MHRFX-120120
126" x 126"	Cast Iron	Cast Iron	126" x 126"	Standard	142.5	95.0	237.5	62MHRFX-126126
132" x 132"	Cast Iron	Cast Iron	132" x 132"	Standard	150.0	100.0	250.0	62MHRFX-132132
138" x 138"	Cast Iron	Cast Iron	138" x 138"	Standard	157.5	105.0	262.5	62MHRFX-138138
144" x 144"	Cast Iron	Cast Iron	144" x 144"	Standard	165.0	110.0	275.0	62MHRFX-144144
150" x 150"	Cast Iron	Cast Iron	150" x 150"	Standard	172.5	115.0	287.5	62MHRFX-150150
156" x 156"	Cast Iron	Cast Iron	156" x 156"	Standard	180.0	120.0	300.0	62MHRFX-156156
162" x 162"	Cast Iron	Cast Iron	162" x 162"	Standard	187.5	125.0	312.5	62MHRFX-162162
168" x 168"	Cast Iron	Cast Iron	168" x 168"	Standard	195.0	130.0	325.0	62MHRFX-168168
174" x 174"	Cast Iron	Cast Iron	174" x 174"	Standard	202.5	135.0	337.5	62MHRFX-174174
180" x 180"	Cast Iron	Cast Iron	180" x 180"	Standard	210.0	140.0	350.0	62MHRFX-180180
186" x 186"	Cast Iron	Cast Iron	186" x 186"	Standard	217.5	145.0	362.5	62MHRFX-186186
192" x 192"	Cast Iron	Cast Iron	192" x 192"	Standard	225.0	150.0	375.0	62MHRFX-192192
198" x 198"	Cast Iron	Cast Iron	198" x 198"	Standard	232.5	155.0	387.5	62MHRFX-198198
204" x 204"	Cast Iron	Cast Iron	204" x 204"	Standard	240.0	160.0	400.0	62MHRFX-204204
210" x 210"	Cast Iron	Cast Iron	210" x 210"	Standard	247.5	165.0	412.5	62MHRFX-210210
216" x 216"	Cast Iron	Cast Iron	216" x 216"	Standard	255.0	170.0	425.0	62MHRFX-216216
222" x 222"	Cast Iron	Cast Iron	222" x 222"	Standard	262.5	175.0	437.5	62MHRFX-222222
228" x 228"	Cast Iron	Cast Iron	228" x 228"	Standard	270.0	180.0	450.0	62MHRFX-228228
234" x 234"	Cast Iron	Cast Iron	234" x 234"	Standard	277.5	185.0	462.5	62MHRFX-234234
240" x 240"	Cast Iron	Cast Iron	240" x 240"	Standard	285.0	190.0	475.0	62MHRFX-240240
246" x 246"	Cast Iron	Cast Iron	246" x 246"	Standard	292.5	195.0	487.5	62MHRFX-246246
252" x 252"	Cast Iron	Cast Iron	252" x 252"	Standard	300.0	200.0	500.0	62MHRFX-252252
258" x 258"	Cast Iron	Cast Iron	258" x 258"	Standard	307.5	205.0	512.5	62MHRFX-258258
264" x 264"	Cast Iron	Cast Iron	264" x 264"	Standard	315.0	210.0	525.0	62MHRFX-264264
270" x 270"	Cast Iron	Cast Iron	270" x 270"	Standard	322.5	215.0	537.5	62MHRFX-270270
276" x 276"	Cast Iron	Cast Iron	276" x 276"	Standard	330.0	220.0	550.0	62MHRFX-276276
282" x 282"	Cast Iron	Cast Iron	282" x 282"	Standard	337.5	225.0	562.5	62MHRFX-282282
288" x 288"	Cast Iron	Cast Iron	288" x 288"	Standard	345.0	230.0	575.0	62MHRFX-288288
294" x 294"	Cast Iron	Cast Iron	294" x 294"	Standard	352.5	235.0	587.5	62MHRFX-294294
300" x 300"	Cast Iron	Cast Iron	300" x 300"	Standard	360.0	240.0	600.0	62MHRFX-300300



FLEXSTORM P/Ns 62LHDFX & 62LHDFXP
RD INLET TYPE: RAISED CAST IRON FRAME AND ROUND GRATE

Frame Size (in. x in.)	Frame Material	Grate Material	Grate Size (in. x in.)	Grate Type	Grate Weight (lb)	Frame Weight (lb)	Total Weight (lb)	Part No.
24" x 24"	Cast Iron	Cast Iron	24" x 24"	Standard	15.0	10.0	25.0	62LHDFX-2424
30" x 30"	Cast Iron	Cast Iron	30" x 30"	Standard	22.5	15.0	37.5	62LHDFX-3030
36" x 36"	Cast Iron	Cast Iron	36" x 36"	Standard	30.0	20.0	50.0	62LHDFX-3636
42" x 42"	Cast Iron	Cast Iron	42" x 42"	Standard	37.5	25.0	62.5	62LHDFX-4242
48" x 48"	Cast Iron	Cast Iron	48" x 48"	Standard	45.0	30.0	75.0	62LHDFX-4848
54" x 54"	Cast Iron	Cast Iron	54" x 54"	Standard	52.5	35.0	87.5	62LHDFX-5454
60" x 60"	Cast Iron	Cast Iron	60" x 60"	Standard	60.0	40.0	100.0	62LHDFX-6060
66" x 66"	Cast Iron	Cast Iron	66" x 66"	Standard	67.5	45.0	112.5	62LHDFX-6666
72" x 72"	Cast Iron	Cast Iron	72" x 72"	Standard	75.0	50.0	125.0	62LHDFX-7272
78" x 78"	Cast Iron	Cast Iron	78" x 78"	Standard	82.5	55.0	137.5	62LHDFX-7878
84" x 84"	Cast Iron	Cast Iron	84" x 84"	Standard	90.0	60.0	150.0	62LHDFX-8484
90" x 90"	Cast Iron	Cast Iron	90" x 90"	Standard	97.5	65.0	162.5	62LHDFX-9090
96" x 96"	Cast Iron	Cast Iron	96" x 96"	Standard	105.0	70.0	175.0	62LHDFX-9696
102" x 102"	Cast Iron	Cast Iron	102" x 102"	Standard	112.5	75.0	187.5	62LHDFX-102102
108" x 108"	Cast Iron	Cast Iron	108" x 108"	Standard	120.0	80.0	200.0	62LHDFX-108108
114" x 114"	Cast Iron	Cast Iron	114" x 114"	Standard	127.5	85.0	212.5	62LHDFX-114114
120" x 120"	Cast Iron	Cast Iron	120" x 120"	Standard	135.0	90.0	225.0	62LHDFX-120120
126" x 126"	Cast Iron	Cast Iron	126" x 126"	Standard	142.5	95.0	237.5	62LHDFX-126126
132" x 132"	Cast Iron	Cast Iron	132" x 132"	Standard	150.0	100.0	250.0	62LHDFX-132132
138" x 138"	Cast Iron	Cast Iron	138" x 138"	Standard	157.5	105.0	262.5	62LHDFX-138138
144" x 144"	Cast Iron	Cast Iron	144" x 144"	Standard	165.0	110.0	275.0	62LHDFX-144144
150" x 150"	Cast Iron	Cast Iron	150" x 150"	Standard	172.5	115.0	287.5	62LHDFX-150150
156" x 156"	Cast Iron	Cast Iron	156" x 156"	Standard	180.0	120.0	300.0	62LHDFX-156156
162" x 162"	Cast Iron	Cast Iron	162" x 162"	Standard	187.5	125.0	312.5	62LHDFX-162162
168" x 168"	Cast Iron	Cast Iron	168" x 168"	Standard	195.0	130.0	325.0	62LHDFX-168168
174" x 174"	Cast Iron	Cast Iron	174" x 174"	Standard	202.5	135.0	337.5	62LHDFX-174174
180" x 180"	Cast Iron	Cast Iron	180" x 180"	Standard	210.0	140.0	350.0	62LHDFX-180180
186" x 186"	Cast Iron	Cast Iron	186" x 186"	Standard	217.5	145.0	362.5	62LHDFX-186186
192" x 192"	Cast Iron	Cast Iron	192" x 192"	Standard	225.0	150.0	375.0	62LHDFX-192192
198" x 198"	Cast Iron	Cast Iron	198" x 198"	Standard	232.5	155.0	387.5	62LHDFX-198198
204" x 204"	Cast Iron	Cast Iron	204" x 204"	Standard	240.0	160.0	400.0	62LHDFX-204204
210" x 210"	Cast Iron	Cast Iron	210" x 210"	Standard	247.5	165.0	412.5	62LHDFX-210210
216" x 216"	Cast Iron	Cast Iron	216" x 216"	Standard	255.0	170.0	425.0	62LHDFX-216216
222" x 222"	Cast Iron	Cast Iron	222" x 222"	Standard	262.5	175.0	437.5	62LHDFX-2222