

- GENERAL NOTES**
- This drawing shall be read in conjunction with all relevant Architectural, Engineering and related Drawings and Documents.
 - Refer to Engineering Drawings for Grading and Servicing.
 - Refer to Architectural Drawings for Site layout.
 - Contractor shall provide the location(s) of all services/utilities by consulting Municipal Authorities and Utility companies and shall be responsible for adequate protection from damage during construction.
 - Plant material shall be No. 1 Grade and shall comply with the Metric Guide Specifications For Nursery Stock (latest edition), published by the Canadian Nursery Trades Association.
 - Plant Material locations are Schematic / Approximate only. Contractor shall stake out locations on site prior to work.
 - Contractor shall guarantee all plant material for a period of one (1) full year from the date of final acceptance.
 - Perennials and Ornamental Grasses shall be planted in a continuous prepared bed of 450mm depth planting soil mix covered over with 75mm depth composted pine mulch to finish grade (NO WEED CONTROL FABRIC), as specified.
 - Restore all areas damaged or disturbed beyond the limit of Work.
 - Plant Material substitutions shall not be permitted without written approval from the Consultant.
 - Sod areas to receive 125mm topsoil. Sod shall be No. 1 quality conforming to the Canadian Nursery Sod Growers Specification.
 - Provide protection for existing trees to be retained. Install fencing to Critical Root Zone (CRZ) of each tree or groupings of trees (if close together). No excavation, filling, storage of materials, disposal of chemicals or waste, vehicle traffic or other activity which could cause root zone disturbance or compaction, shall take place within the protected area.
 - Where limbs of trees are removed to accommodate construction work, they shall be done in accordance with accepted arboricultural practice.
 - Where root systems become exposed due to excavation, carefully trim damaged roots and provide temporary mulch until backfill is undertaken. Keep roots moist at all times.
 - Construct wells or retaining walls if grades around trees are to be modified. Root feed all existing trees after construction.
 - Contractor shall advise Consultant a minimum of 48hrs prior to proceeding landscape work and any required Field Reviews.
 - THIS PLAN HAS BEEN PREPARED FOR MUNICIPAL SITE PLAN APPROVAL ONLY AND MAY NOT BE USED FOR ANY OTHER PURPOSE.**

REFER TO APPENDIX G OF THE EIS FOR RESTORATION PLANTING IN THIS AREA.

PLANT MATERIAL SCHEDULE

CODE	BOTANICAL NAME	COMMON NAME	QTY.	SIZE	REMARKS
DECIDUOUS TREES					
AC	AMELANCHIER CANADENSIS	SHADBLOW SERVICEBERRY	7	50mm cal	B&B Single Stem
AFJ	ACER x FREEMANII x EFFERSI	AUTUMN BLAZE MAPLE	20	60mm cal	B&B Single Stem
AK	ACER SACCHARINUM	SILVER MAPLE	2	60mm cal	B&B Single Stem
BA	BE TULA ALLEGHANENSIS	YELLOW BIRCH	3	60mm cal	B&B Single Stem
CA	CARPINUS BEECHERII	YELLO BIRCH	7	50mm cal	B&B Single Stem
CD	CELTIS OCCIDENTALIS	COMMON HACKBERRY	14	60mm cal	B&B Single Stem
CGK	CINERARIA ALUTICA GOLD	AUTUMN GOLD MAINE HAIR TREE	7	60mm cal	B&B Single Stem
GT	GLEDTISIA TRICANTHOS	SHADEMASTER HONEYLOCUST	10	60mm cal	B&B Single Stem
GM	QUERCUS MACROCARPA	BUR OAK	8	60mm cal	B&B Single Stem
OK	QUERCUS	B&B Single Stem	8	60mm cal	B&B Single Stem
SR	SYRINGA RETICULATA IVORY	IVORY SILK JAPANESE TREE LILAC	1	50mm cal	B&B Single Stem
TA	TILIA AMERICANA	AMERICAN BASSWOOD	6	60mm cal	B&B Single Stem
TC	TILIA CORDATA	LITTLELEAF LINDEN	6	60mm cal	B&B Single Stem
CONIFEROUS TREES					
PI	PICEA GLAUCA	WHITE SPRUCE	16	180 cm ht	B&B
PR	PRINUS RESINOSA	RED PINE	9	180 cm ht	B&B
PS	PRINUS STROBUS	WHITE PINE	4	180 cm ht	B&B
SHRUBS					
ACZ	AMELANCHIER CANADENSIS	DOWNY SERVICEBERRY	4	100cm ht	potted, multi-stem
AK	AKONIA MELANOCARPA	BLACK CHERRYBERRY	29	50mm ht	potted, 100cm o/c
CM	CORNUS AL TERNIFLORA	PAGODA DOGWOOD	1	100cm ht	potted, multi-stem
CR	CORNUS RACEMOSA	GRAY DOGWOOD	33	50mm ht	potted, 120cm o/c
DL	DIERVA LANCEOLATA	BUSH HONEYBUCKLE	83	50mm ht	potted, 100cm o/c
DL2	DIERVA LANCEOLATA	BUSH HONEYBUCKLE	82	50mm ht	potted, 120cm o/c
HAK	HYDRANGEA ARBORESCENS ANNABELLE	ANNABELLE HYDRANGEA	9	50cm ht	potted, 100cm o/c
HAG	HYDRANGEA ARBORESCENS GRANDIFLORA	SNOWBALL HYDRANGEA	20	50cm ht	potted, 100cm o/c
HPS	HYDRANGEA ANICULATA GRANDIFLORA	PEE GEE HYDRANGEA	24	50cm ht	potted, 100cm o/c
HYF	POTENTILLA FRUTICOSA YELLOW GEM	YELLOW GEM CINQUEFOIL	153	50mm ht	potted, 80cm o/c
POZ	PHYSCOCARPUS OPULEFOLIUS	COMMON NINEBARK	35	50mm ht	potted, 100cm o/c
POC	PHYSCOCARPUS OPULEFOLIUS	COMMON NINEBARK	60	50mm ht	potted, 120cm o/c
PKM	PHILADELPHUS VIRGINALIS	MINNESOTA SNOWFLAKE	103	50mm ht	potted, 100cm o/c
RA	RIBES ALPNUM	ALPINE CURBANT	86	50mm ht	potted, 100cm o/c
RB	ROSA BLANDA	SIRUB ROSE	140	50mm ht	potting, 120cm o/c
RS	ROSA BLANDA	SIRUB ROSE	95	50mm ht	potting, 120cm o/c
SA	SYMPHORICARPUS ALBUS	SNOWBERRY	31	50mm ht	potting, 100cm o/c
SPT	SPIRAEA BERTOLIANA	BIRCH LEAF SPIRAEA	60	50mm ht	potting, 100cm o/c
SJC	SPIRAEA JAPONICA COCCINEA	DIABOL RED FLOWERING SPIRAEA	77	50mm ht	potting, 80cm o/c
SJF	SPIRAEA JAPONICA FRICKELII	FRICKEL SPIRAEA	69	50mm ht	potting, 100cm o/c
SJG	SPIRAEA JAPONICA GOLDMOUND	GOLDMOUND SPIRAEA	69	50mm ht	potting, 100cm o/c
SS	SORBARIA SORIFOLIA	FALSE SPIRAEA	106	50mm ht	potting, 100cm o/c
TM	TAUS MEDIA GENSIFORMIS	GENSIE YEW	96	50mm ht	potting, 100cm o/c
VI	VIBURNUM LENTAGO	NANNYBERRY	2	100cm ht	potting, multi-stem
WFPO	WEIGELA FLORIDA POLKA	POLKA WEIGELA	84	50mm ht	potting, 100cm o/c
WVU	WEIGELA FLORIDA VARIEGATA	VARIEGATED WEIGELA	46	50mm ht	potting, 100cm o/c
PERENNIALS					
Ech	ECHINACEA purpurea	PURPLE CONEFLOWER	56	15 cm pot	plant 60cm o/c
Hes	HEMEROCALLIS Hyperion	HYPERION LILY	292	15 cm pot	plant 60cm o/c
Hos	HOSTA Naniamo	PLANTAIN LILY	80	15 cm pot	plant 60cm o/c
On	Oenothera fruticosa ssp. glauca	SUNDOG	30	15 cm pot	plant 60cm o/c
Rd	RUBRO-COCA bicolor	CUTLACE CONEFLOWER	86	15 cm pot	plant 60cm o/c
Sir	SALVIA nemerosa May Light	MAY LIGHT MEADOW SAGE	50	15 cm pot	plant 60cm o/c
GRASSES / SEDGES					
Cal	CALAMAGROSTIS x acutiflora	KARL FOERSTER REED GRASS	291	15cm pot	plant 75cm o/c
Das	DESCHAMPOUSA cespitosa	TUFTED HAIR GRASS	322	15 cm pot	plant 75cm o/c
Fes	FESTUCA arvenstis FESURE	ARVENST FESURE	220	15cm pot	plant 60cm o/c
Ly	LYRICHIA virginica	SWITCH GRASS	177	15cm pot	plant 75cm o/c
Nes	NEOGASSIA tenuis	NEOGASSIA GRASS	18	15cm pot	plant 75cm o/c
Sp	SPOROBOLUS heterophyllus	PHAIRS DROPSEED	88	15cm pot	plant 75cm o/c

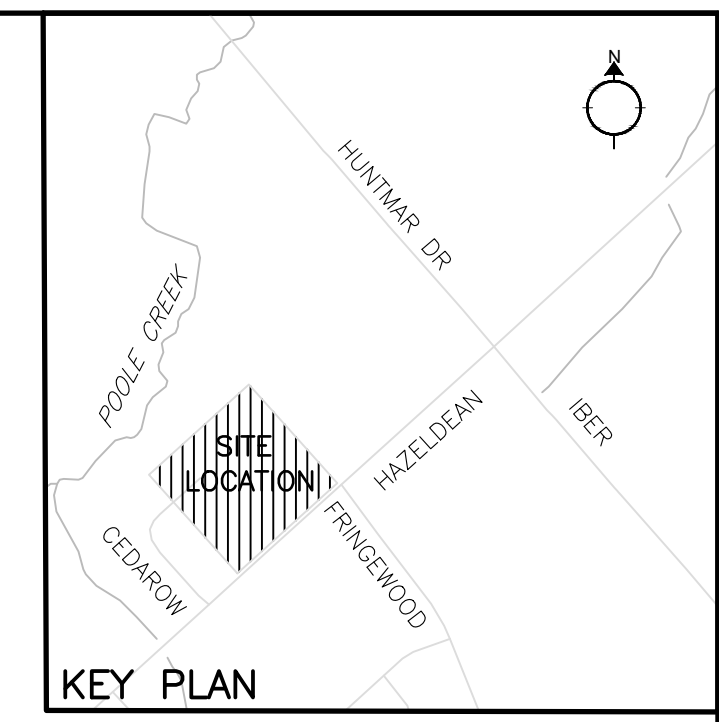
SCHEDULE OF EXISTING TREES
(Inventory conducted July 27, 2022)

CODE	SPECIES	CONDITION	DBH ¹ (cm)	OWNERSHIP	ACTION NOTES
1	Gleditsia triacanthos Honeylocust	Good	8	City	Protect / RETAIN
2	Gleditsia triacanthos Honeylocust	Good	11	City	Protect / RETAIN
3	Gleditsia triacanthos Honeylocust	Good	8	City	Protect / RETAIN
4	Gleditsia triacanthos Honeylocust	Good	9	City	Protect / RETAIN
5	Gleditsia triacanthos Honeylocust	Good	9	City	Protect / RETAIN
6	Acer saccharinum Silver maple	Development conflict / Grading impact / trees planted approx. 60cm below municipal sidewalk grade / REMOVE	15	City	
7	Acer saccharinum Silver maple	Development conflict / Grading impact / trees planted approx. 60cm below municipal sidewalk grade / REMOVE	13	City	
8	Acer saccharinum Silver maple	Development conflict / Grading impact / trees planted approx. 60cm below municipal sidewalk grade / REMOVE	13	City	
9	Gleditsia triacanthos Honeylocust	Development conflict / Grading impact / trees planted approx. 60cm below municipal sidewalk grade / REMOVE	10	City	
10	Gleditsia triacanthos Honeylocust	Development conflict / Grading impact / trees planted approx. 60cm below municipal sidewalk grade / REMOVE	10	City	
11	Gleditsia triacanthos Honeylocust	Development conflict / Grading impact / trees planted approx. 60cm below municipal sidewalk grade / REMOVE	10	City	

¹DBH (Diameter at breast height, or 1.4m from grade (unless otherwise noted)).

NOTE:

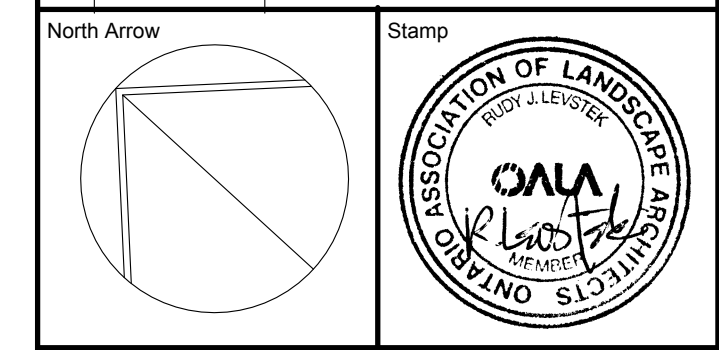
- In conformance with the guidelines outlined in the City of Ottawa Protocol for Wildlife Protection During Construction, no clearing of vegetation shall occur between April 15 and August 15, unless a qualified biologist has determined that no nesting is occurring within 5 days prior to clearing. A pre-clearing survey for active stick nests and cavity nests shall also be conducted between April 1 and April 15 in order to identify and protect early nesting owls and raptors.
- A permit is required for any removal of trees, 10cm DBH or greater.



- LEGEND / SYMBOL**
- EXISTING TREE TO BE RETAINED
 - CRZ (Critical Root Zone)
 - EXISTING TREE TO BE REMOVED
 - CRZ (Critical Root Zone)
 - PROPOSED DECIDUOUS TREE DETAIL 21.2.01
 - PROPOSED CONIFEROUS TREE DETAIL 21.2.01
 - PROPOSED SHRUBS / PERENNIALS / GRASSES DETAIL 21.2.01
 - UNIT PAVING TYPE 1
 - UNIT PAVING TYPE 2
 - UNIT PAVING TYPE 3
 - UNIT PAVING TYPE 4
 - PROPOSED DECORATIVE AGGREGATE
 - PROPOSED P.C CONCRETE SEGMENTAL PLANTER
 - PROPOSED P.C CONCRETE SEGMENTAL PLANTER
 - PROPOSED (TRAFFIC) BOLLARD
 - PROPOSED BICYCLE PARKING (40 PROVIDED)
 - PROPOSED TREE PROTECTION BARRIER DETAIL 11.2.01
 - PROPOSED WALKWAY LIGHT BOLLARD
 - PROPOSED PICKLEBALL COURT LIGHT STANDARD

FOR APPROVAL ONLY

No.	date	revision
8.	DEC 22/22	ISSUE FOR SPA AMENDMENT
7.	MAR 23/22	RE-ISSUE FOR SPA
6.	MAR 18/22	ISSUE INFORMATION ONLY
5.	AUG 27/21	RE-ISSUE FOR SPA
4.	SEPT 17/20	ISSUE FOR UDRP
3.	MAY 25/20	RE-ISSUE FOR SITE PLAN APPROVAL
2.	NOV 15/19	ISSUE FOR SITE PLAN APPROVAL
1.	AUG 23/19	ISSUE FOR UDRP



Contractor shall check and verify all dimensions on site and report all errors and/or omissions to the Consultant. Work to be done in accordance with all applicable codes and by-laws. Do not scale Drawing. This Drawing shall not be used for construction until signed by the Consultant. Copyright reserved. This Drawing is the exclusive property of Levstek Consultants Inc. and shall not be used without consent.

Consultant
LEVSTEK CONSULTANTS
LANDSCAPE ARCHITECTS
2871 High Crescent - Ottawa, Ontario - K6A 2W0
613 - 924 - 8418

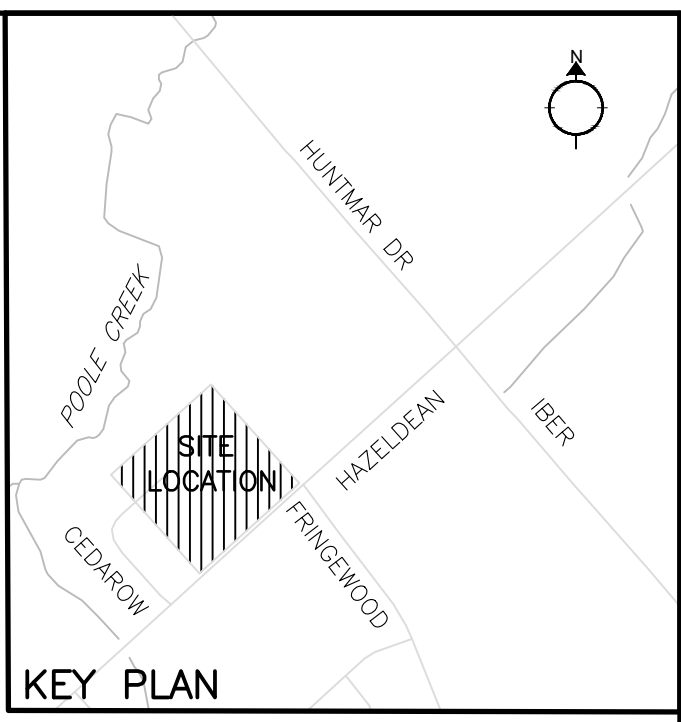
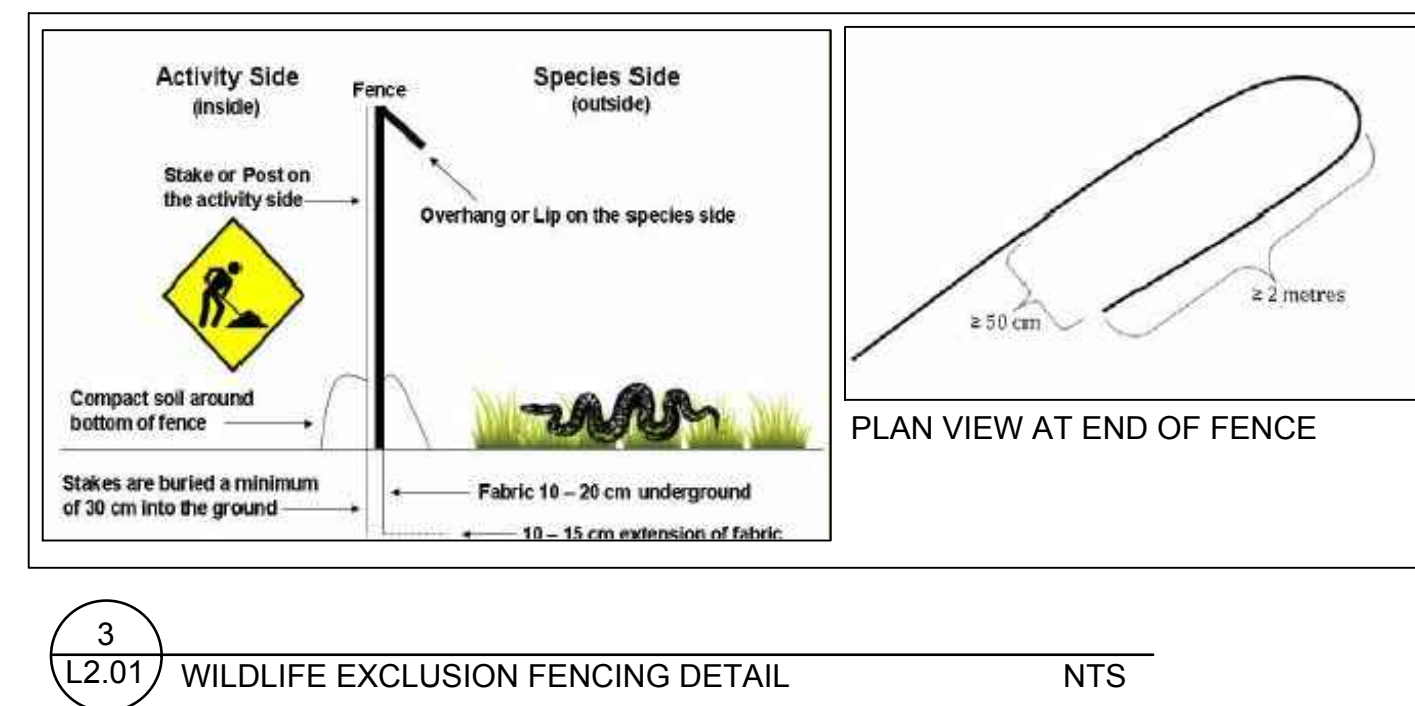
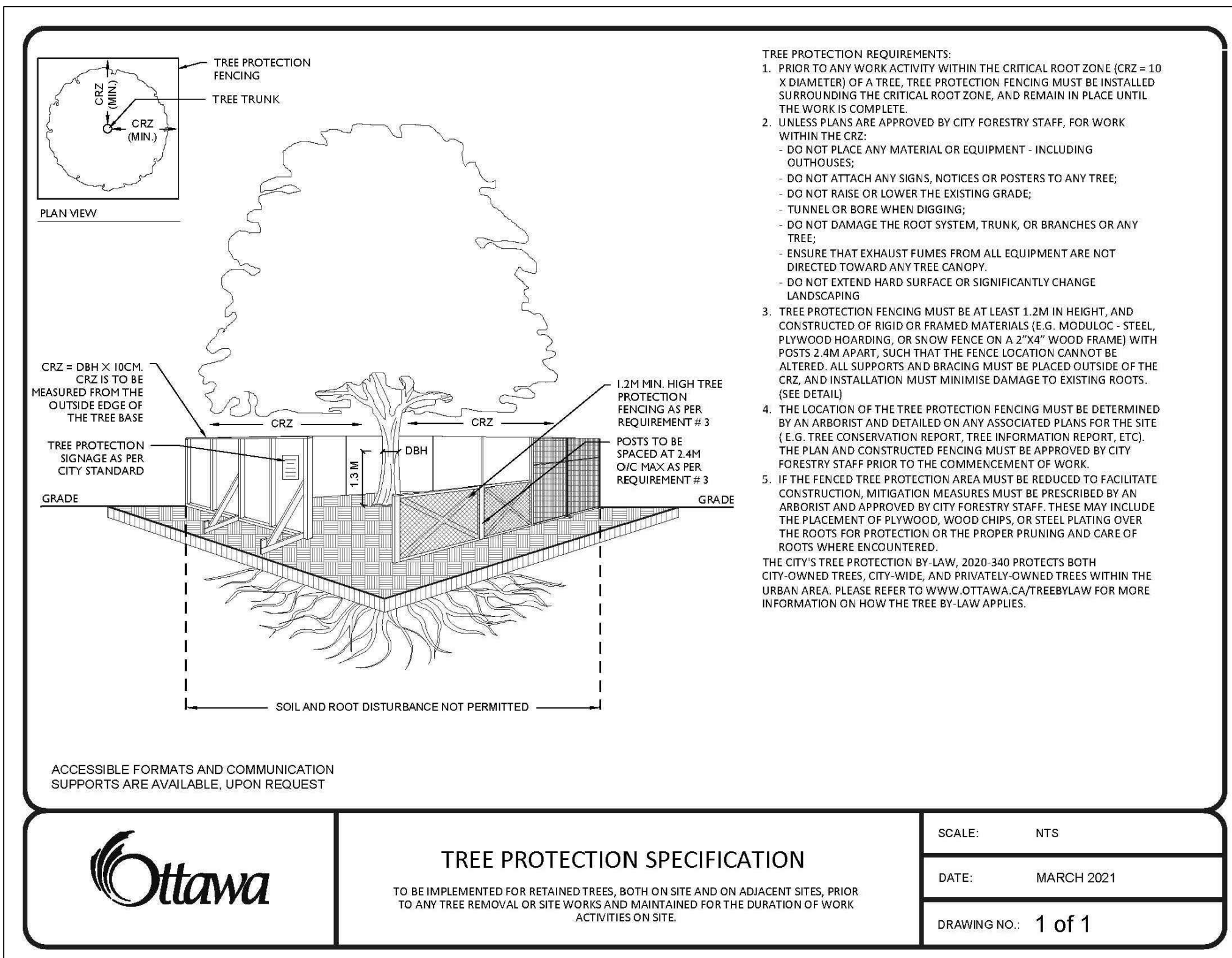
Client
NATURAL LAND GROUP Wellings NLGC

Project
WELLINGS OF STITTSVILLE PHASE 2
20 CEDAROW COURT

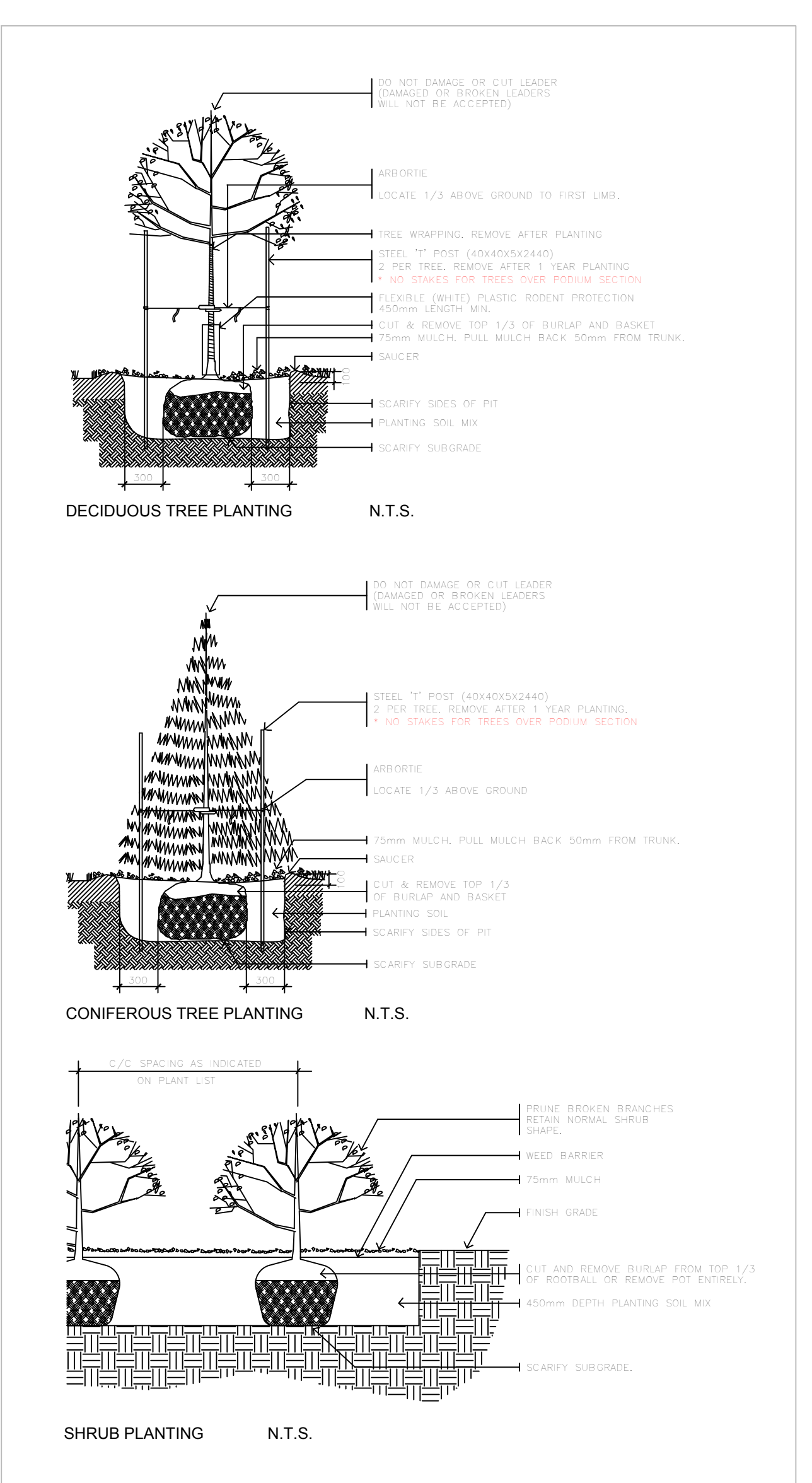
Drawing Title
LANDSCAPE PLAN

Drawn: MGB Date: AUG. 2019 Drawing No.:
Scale: 1:300 Project No.: L1.01

#18190



1
L2.01 TREE PROTECTION BARRIER NTS



*ROOT BARRIER SHALL BE INSTALLED IN CONFORMANCE WITH INTENSIVE GREEN ROOF INVERTED ROOFING ASSEMBLY

2
L2.01 PLANTING DETAILS NTS

FOR APPROVAL ONLY

no.	date	revision
3.	DEC 22/22	ISSUE FOR SPA AMENDMENT
2.	MAR 23/22	RE-ISSUE FOR SPA
1.	MAR 18/22	ISSUE INFORMATION ONLY

North Arrow

Stamp

Contractor shall check and verify all dimensions on site and report all errors and/or omissions to the Consultant.
Work to be done in accordance with all applicable codes and by-laws.
Do not scale Drawing.
This Drawing shall not be used for construction until signed by the Consultant.
Copyright reserved. This Drawing is the exclusive property of Levstek Consultants Inc. and shall not be used without consent.

Consultant

LEVSTEK CONSULTANT'S
LANDSCAPE ARCHITECTS
5871 Hugh Creekway - Ottawa, Ontario - K6A 2W0
613 - 824 - 2618

Client

NAUTICAL LANDS GROUP **Wellings** **NLGC**

Project
WELLINGS OF STITTSVILLE PHASE 2
20 CEDAROW COURT

Drawing Title
LANDSCAPE DETAILS

Drawn	Date	Drawn No.
MGB	AUG. 2019	
Scale	Project No.	Drawing No.
AS SHOWN	1164	L2.01