

PART OF LOT 27  
CONCESSION 12  
Geographical Township of Goulbourn  
CITY OF OTTAWA

Prepared by Annis, O'Sullivan, Vollebek Ltd.  
Field Work Completed January 10, 2019

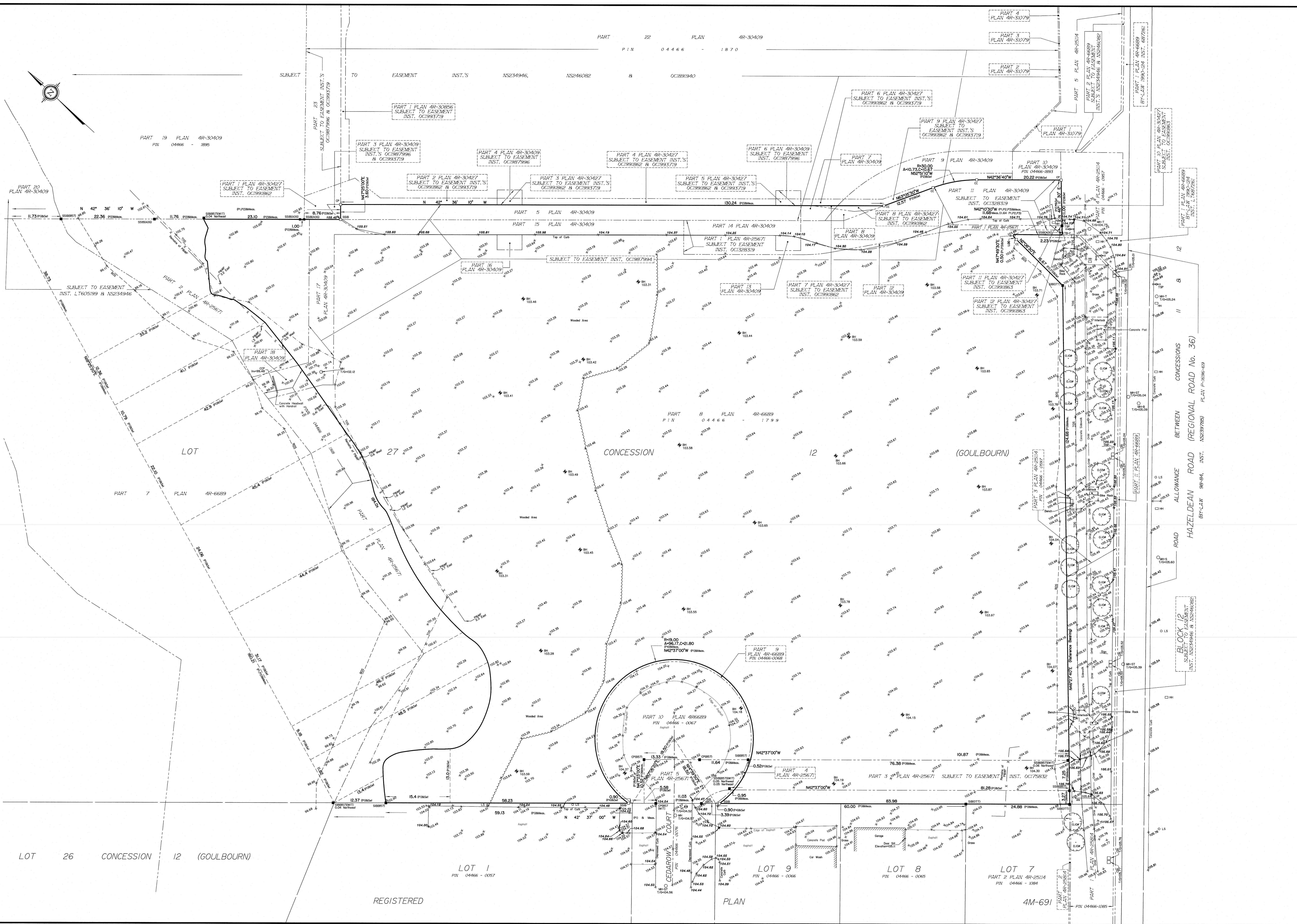
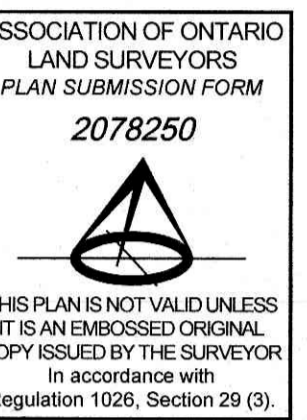
Scale 1:300  
0 3 6 9 12 Metres

Metric  
DISTANCES SHOWN ON THIS PLAN ARE IN METRES AND  
CAN BE CONVERTED TO FEET BY DIVIDING BY 0.3048

Surveyor's Certificate

- I CERTIFY THAT  
1. This survey and plan are correct and in accordance with the Surveys Act, the Surveyors Act and the Land Titles Act and the regulations made under them.
- The survey was completed on the 10th day of January, 2019.

Date: 1/10/19  
Annis, O'Sullivan, Vollebek Ltd.  
Ontario Land Surveyor



Notes & Legend

- |         |         |                                    |
|---------|---------|------------------------------------|
| —○—     | Denotes | Survey Monument Planted            |
| —■—     |         | Survey Monument Found              |
| —SB—    |         | Standard Iron Bar                  |
| —SSB—   |         | Short Standard Iron Bar            |
| —CP—    |         | Concrete Pin                       |
| (WIT)   |         | Witness                            |
| (AOQ)   |         | Annis, O'Sullivan, Vollebek Ltd.   |
| Meas.   |         | Measured                           |
| (P1)    |         | Plan 4R-25671                      |
| (P2)    |         | Plan 4R-30409                      |
| (P3)    |         | Plan 4R-25114                      |
| (P4)    |         | Plan 4R-46689                      |
| (P5)    |         | Plan 4R-30427                      |
| ○ M-H-S |         | Maintenance Hole (Storm Sewer)     |
| ○ M-H-S |         | Maintenance Hole (Sanitary)        |
| ○ M-H-B |         | Maintenance Hole (Bell)            |
| ○ M-H-T |         | Maintenance Hole (Traffic)         |
| ○ M-H   |         | Maintenance Hole (Undertaken)      |
| ○ V-C   |         | Valve Chamber (Watermain)          |
| ○ U-P   |         | Utility Pole                       |
| —AN—    |         | Anchor                             |
| ○ L-S   |         | Light Standard                     |
| ○ P-O-M |         | Mail Pole                          |
| —S—     |         | Sign                               |
| ○ CBI   |         | Catch Basin Inlet                  |
| —CP—    |         | Concrete Pipe                      |
| —Inv.   |         | Invert                             |
| —T/G    |         | Top of Grate                       |
| —CH—    |         | Handhole                           |
| —TB-B   |         | Ball Terminal Box                  |
| —TB-C   |         | Cable Terminal Box                 |
| —TSP—   |         | Traffic Signal Post                |
| —TOS    |         | Top of Slope                       |
| —BOS    |         | Bottom of Slope                    |
| —P&WF   |         | Post and Wire Fence                |
| —BH     |         | Bore Hole                          |
| ○       |         | Deciduous Tree                     |
| φ       |         | Diameter                           |
| 65.00   |         | Location of Elevations             |
| 65.00   |         | Location of Top of Curb Elevations |

SITE AREA = 23235.8 m<sup>2</sup>

Bearings are grid, derived from the northwesterly limit of Part 3 on Plan 4R-25114, shown to be N46°27'40"E, and are referred to the Central Meridian of MTM Zone 5 (78°30' West Longitude) NAD83 (original).

ELEVATION NOTES  
1. Elevations shown are geoidic and are referred to the CGVD28 geoid datum.  
2. It is the responsibility of the user of this information to verify that the job benchmark has not been altered or disturbed and that its relative elevation and description agrees with the information shown on this drawing.

UTILITY NOTES  
1. This drawing cannot be accepted as acknowledging all of the utilities and it will be the responsibility of the user to contact the respective utility authorities for confirmation.  
2. Only visible surface utilities were located.  
3. A field location of underground plant by the pertinent utility authority is mandatory before any work involving breaking ground, probing, excavating etc.