

Copyright Reserved

The Contractor shall verify and be responsible for all dimensions. DO NOT scale the drawing - any errors or omissions shall be reported to Stantec without delay.
 The Copyrights to all designs and drawings are the property of Stantec. Reproduction or use for any purpose other than that authorized by Stantec is forbidden.

Legend

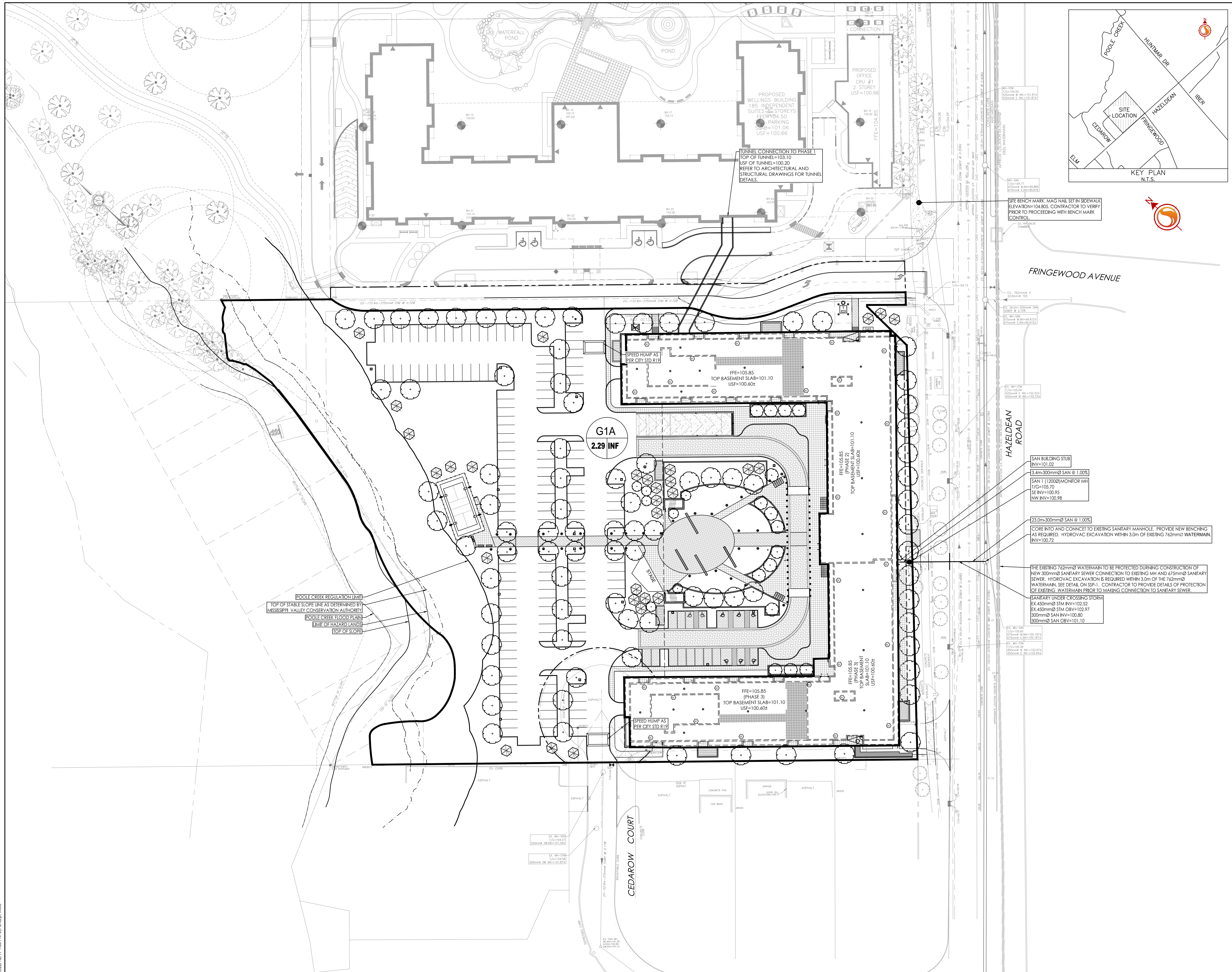
- G1A** SANITARY DRAINAGE AREA ID#
- 0.38 INF** INFILTRATION RATES
- SANITARY DRAINAGE AREA ha.
- SANITARY DRAINAGE AREA
- PROPOSED SANITARY SEWER
- EXISTING SANITARY SEWER

SANITARY STATS

POPULATION COUNT - PHASE 2 & 3

284 - 1 BEDROOM APTS @ 1.4PPU = 400 PEOPLE
 58 - 2 BEDROOM APTS @ 2.1PPU = 122 PEOPLE
TOTAL POPULATION = 522

COMMERCIAL AREA
 TOTAL COMMERCIAL SPACE = 950.85m² [0.095ha] @ 28,000 L/ha/day



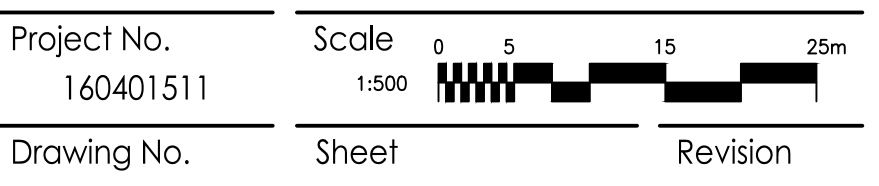
Revision	By	Appd.	YY.MM.DD
6	MJS	DT	22.12.22
5	MJS	DT	22.07.14
4	MJS	DT	22.03.29
3	MJS	TR	21.09.02
2	MJS	DT	21.08.03
1	MJS	DT	20.05.22

File Name: 160401511-08
 Dwn: MJS
 Chkd: DT
 Dagn: MJS
 Appd.: Y.Y.MM.DD

Permit-Seal

Client/Project
NAUTICAL LANDS GROUP
 2962 Carp Road
WELLINGS OF STITTSVILLE PH 2
 20 CEDAROW COURT
 OTTAWA, ON

Title
SANITARY DRAINAGE PLAN



V:\101664\accr\160401511\design\drawing\160401511-08-2.dwg
 2022/12/17 10:30 AM BY: Shrop, MJC
 ORIGINAL SHEET - ARCH D