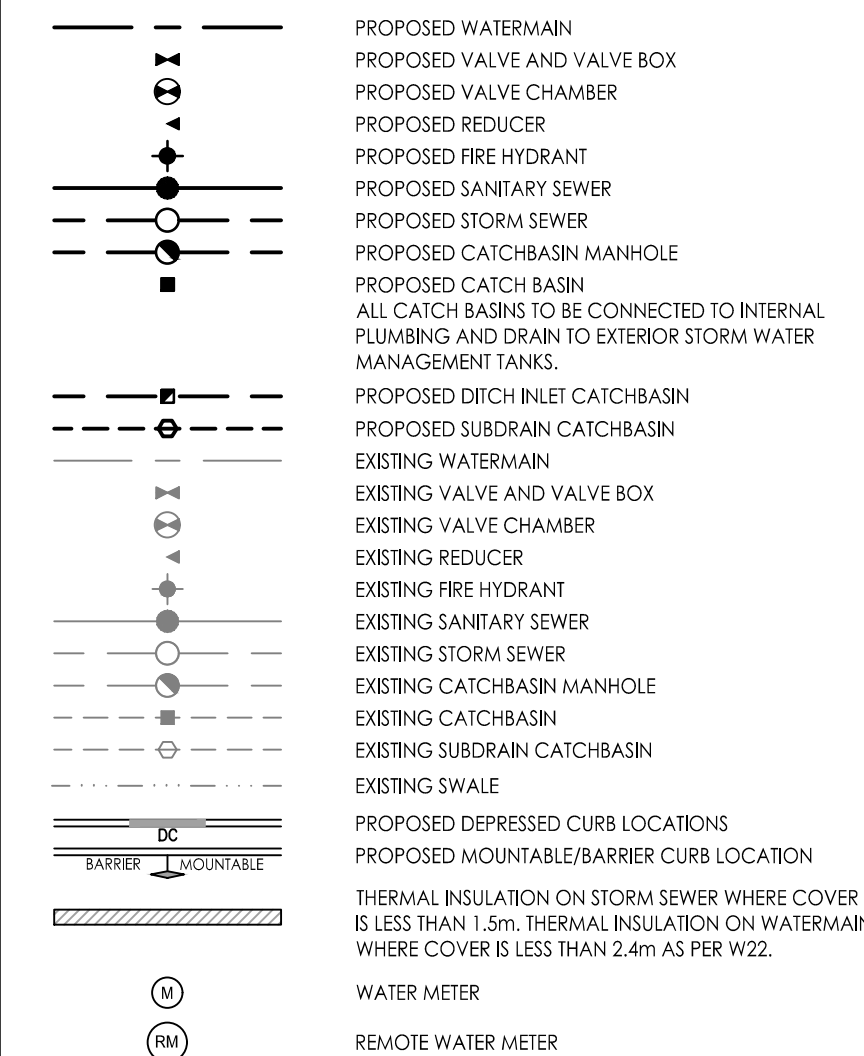


Copyright Reserved

The Contractor shall verify and be responsible for all dimensions. DO NOT scale the drawings - any errors or omissions shall be reported to Stantec without delay.  
The Copyrights to all designs and drawings are the property of Stantec. Reproduction or use for any purpose other than that authorized by Stantec is forbidden.

Legend



NOTES:

- UNDERGROUND PARKING RAMP TRENCH DRAINS TO BE CONVEYED THROUGH BUILDING AND OUTLET INTO EXTERNAL UNDERGROUND STORM WATER MANAGEMENT STORAGE TANKS.
- ALL SURFACE CATCH BASINS INSTALLED ON TOP OF UNDERGROUND PARKING STRUCTURE TO BE CONVEYED THROUGH BUILDING AND OUTLET INTO EXTERNAL UNDERGROUND STORM WATER MANAGEMENT STORAGE TANKS.
- PROPOSED FIRE HYDRANT TO BE SERVICED THROUGH BUILDINGS INTERNAL PLUMBING.
- ALL CATCHBASINS AND FIRE HYDRANTS INSTALLED ON TOP OF PARKING GARAGE STRUCTURE ARE TO BE INSTALLED BY OTHERS.
- INTERNAL GARAGE DRAINS TO BE CONNECTED TO THE SANITARY SEWER.
- AT THE COMPLETION OF CONSTRUCTION A WATER SYSTEM PRESSURE CHECK IS REQUIRED TO BE COMPLETED TO DETERMINE IF PRESSURE CONTROL DEVICES ARE REQUIRED.

Revision	By	App'd.	Y/M/DA
9	REVISED AS PER CITY COMMENTS	MJS	DT 23.06.30
8	REVISED WATER SERVICING	MJS	DT 23.03.10
7	REVISED ADS SYSTEM	MJS	DT 23.12.13
6	ISSUED FOR SPA AMENDMENT	MJS	DT 22.12.22
5	REVISED AS PER CITY COMMENTS	MJS	DT 22.07.14
4	REVISED AS PER CITY COMMENTS	MJS	DT 22.03.29
3	REVISED AS PER CITY COMMENTS	MJS	TR 21.09.02
2	ISSUED FOR GEOTECH REVIEW	MJS	DT 21.08.03
1	ISSUED TO CITY FOR SPA	MJS	DT 20.05.22

Revision	By	App'd.	Y/M/DA
9	REVISED AS PER CITY COMMENTS	MJS	DT 23.06.30
8	REVISED WATER SERVICING	MJS	DT 23.03.10
7	REVISED ADS SYSTEM	MJS	DT 23.12.13
6	ISSUED FOR SPA AMENDMENT	MJS	DT 22.12.22
5	REVISED AS PER CITY COMMENTS	MJS	DT 22.07.14
4	REVISED AS PER CITY COMMENTS	MJS	DT 22.03.29
3	REVISED AS PER CITY COMMENTS	MJS	TR 21.09.02
2	ISSUED FOR GEOTECH REVIEW	MJS	DT 21.08.03
1	ISSUED TO CITY FOR SPA	MJS	DT 20.05.22

File Name:	Dwn.	Chkd.	Dgn.	Y/M/DA
16401511-DB	MJS	DT	MJS	19.09.05

Permit-Seal

Client/Project  
NAUTICAL LANDS GROUP  
2962 Carp Road  
WELLINGS OF STITTSVILLE PH 2  
20 CEDAROW COURT  
OTTAWA, ON

Title  
SITE SERVICING PLAN

Project No.	Scale	Sheet	Revision
16401511	1:500		

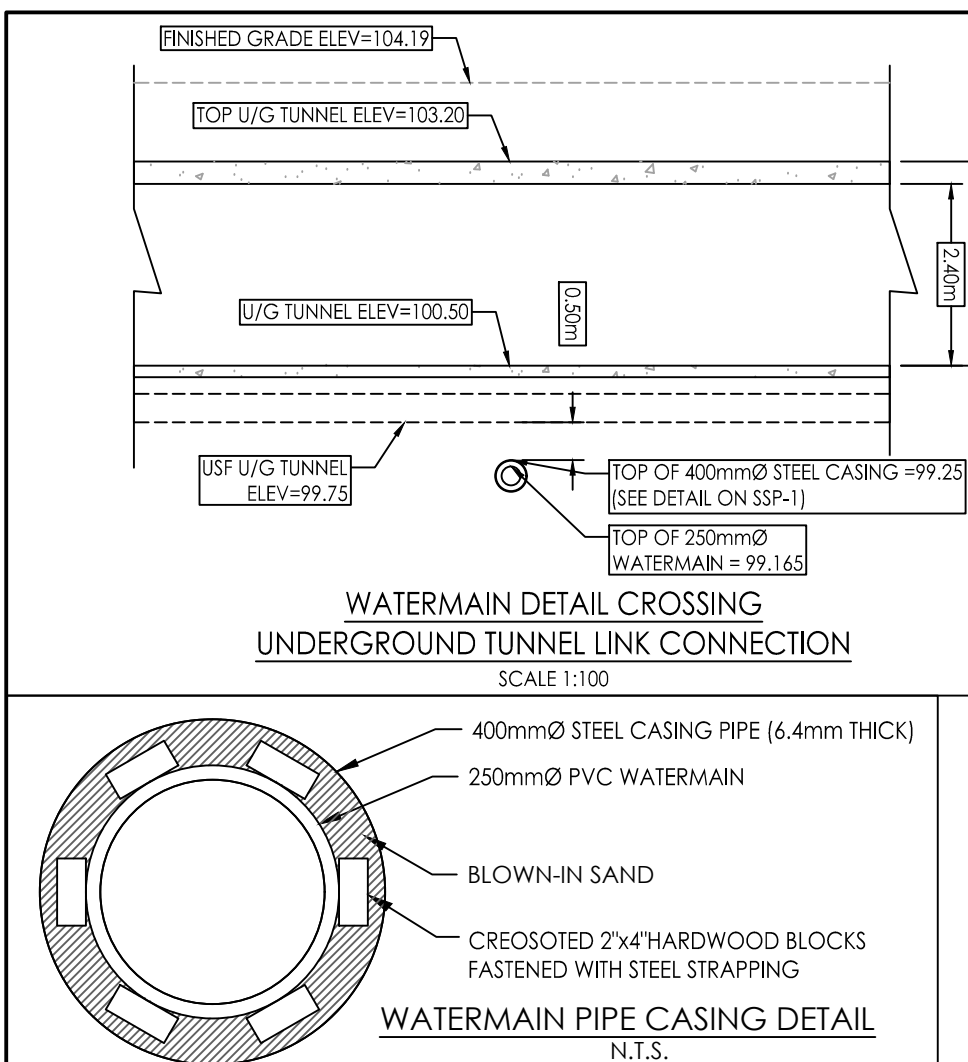
**Proposed ICD Schedule**

Area ID	Office Name	ICD Invert	ICD Type	2yr Head (m)	2yr Flow (L/s)	100yr Head (m)	100yr Flow (L/s)
L102A	CB102A-1	102.70	IPEX TEMPEST HF (102mm ORIFICE)	0.33	10.9	1.21	22.8
L103A	CB103A-1	103.07	IPEX TEMPEST HF (178mm ORIFICE)	0.25	25.2	1.22	69.5
L103B	CB103B-1	102.42	IPEX TEMPEST HF (83mm ORIFICE)	0.52	9.9	1.25	15.3
L103C	CB103C-1	102.70	IPEX TEMPEST HF (83mm ORIFICE)	0.67	10.9	1.45	16.5
L103D	CB103D-1	102.62	IPEX TEMPEST HF (127mm ORIFICE)	0.80	33.3	1.49	56.1
L103E	CB103E-1	102.43	IPEX TEMPEST HF (127mm ORIFICE)	1.18	35.1	1.36	37.4
L104A/B	CBMH104A	102.61	IPEX TEMPEST HF (102mm ORIFICE)	1.17	21.9	1.33	23.9
L106A	CB106A-1	101.97	IPEX TEMPEST HF (102mm ORIFICE)	1.05	22.8	1.46	25.0
L502A/B	EX502-1	102.02	IPEX TEMPEST HF (83mm ORIFICE)	1.27	15.2	1.16	20.0
ADS TANK	100-O1	101.37	IPEX TEMPEST HF (83mm ORIFICE)	0.91	12.8	1.83	18.3
ADS TANK	100-O2	102.25	200mm CIRCULAR ORIFICE	0.03	1.9	0.95	78.1
ADS TANK	100-W1	103.00	500mm WIDE WEIR	0.00	0.0	0.20	58.3

\*NOTE: FLOW VALUES HAVE BEEN ADJUSTED DUE TO IMPACTS BY DOWNSTREAM ADS STORAGE UNIT HGL

**Schedule of Roof Release Rates**

Roof	Number of Drains	Drain Type	100yr Head (m)	100yr Flow (L/s)	100yr Storage (m3)
ROOF1	2	Watts Accutrol Weir (50% Open)	0.13	2.3	5.3
ROOF2	9	Watts Accutrol Weir (50% Open)	0.15	11.2	83.8
ROOF3	8	Watts Accutrol Weir (50% Open)	0.15	9.9	69.0
ROOF4	2	Watts Accutrol Weir (50% Open)	0.13	2.3	5.3



**250mm Ø WATERMAIN DEFLECTION UNDER U/G TUNNEL**

STATION	FINISHED GRADE	TOP OF W/M	ITEM
D+00	104.68	101.48	CONNECT TO EX. 250mm WATERMAIN WITH 45° VERTICAL BEND
D+00.10	104.66	99.16	45° VERTICAL BEND
D+00.75	104.66	99.16	START OF 400mm STEEL SLEEVE
D+01.25	104.00	99.16	END OF 400mm STEEL SLEEVE
D+01.10	104.00	99.16	45° VERTICAL BEND
D+01.3	103.95	101.50	CONNECT TO EX. 250mm WATERMAIN WITH 45° VERTICAL BEND

**200mm Ø WATERMAIN A**

STATION	FINISHED GRADE	TOP OF W/M	ITEM
D+00	104.47	101.48	CONNECT TO EX. VALVE CHAMBER (300mm Ø W/M) AND REDUCE TO 200mm Ø
D+002	104.44	102.50	22° HORIZONTAL BEND
D+009.8	104.37	101.90	22° HORIZONTAL BEND
D+020	104.44	102.50	TOP OF PIPE
D+040	104.43	102.50	TOP OF PIPE
D+060	104.30	101.80	TOP OF PIPE
D+080	104.64	101.40	TOP OF PIPE
D+100	104.44	102.50	TOP OF PIPE
D+120	104.42	102.50	TOP OF PIPE
D+132	104.56	101.80	200mm VALVE AND VALVE BOX
D+139.4	104.58	101.80	45° VERTICAL BEND. CROSSING AS PER W3.2 INSULATE PER W3.2
D+140.1	104.58	102.50	45° VERTICAL BEND. CROSSING AS PER W3.2 INSULATE PER W3.2
D+141.6	104.58	102.50	45° VERTICAL BEND. CROSSING AS PER W3.2 INSULATE PER W3.2
D+142.4	104.58	101.80	45° VERTICAL BEND. CROSSING AS PER W3.2 INSULATE PER W3.2
D+144	104.31	101.80	TIE CONNECTION TO EXISTING 250mm Ø WATERMAIN

**SEWER AND WATERMAIN CROSSING TABLE**

CROSSING ID	STM INV	STM OBV	WTR TOP	WTR Btm
▲	101.45	101.83	102.53	102.33
▲	102.61(102.53)	103.06(103.14)	102.06	101.84
▲	100.89	101.14	101.95	101.75
▲	102.90	103.10	102.02	101.82
▲	102.80	103.00	102.04	101.84

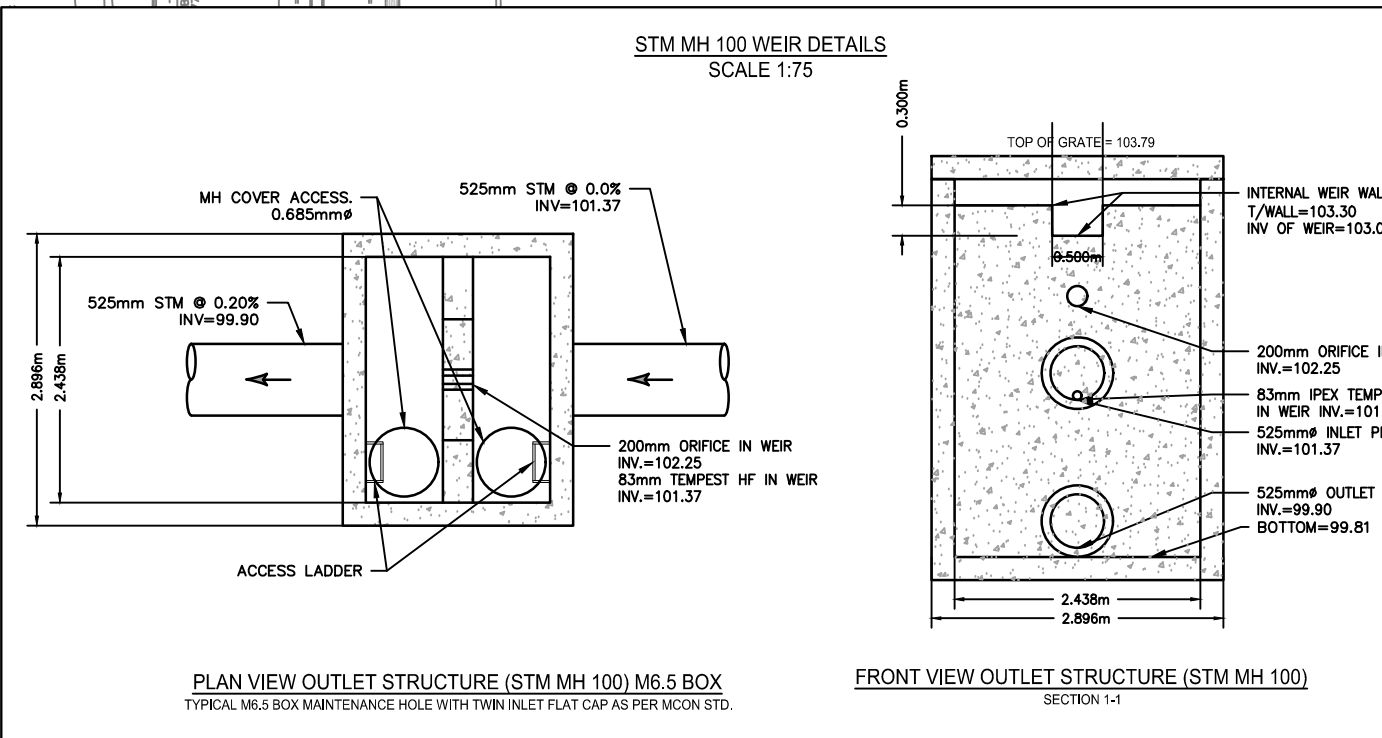
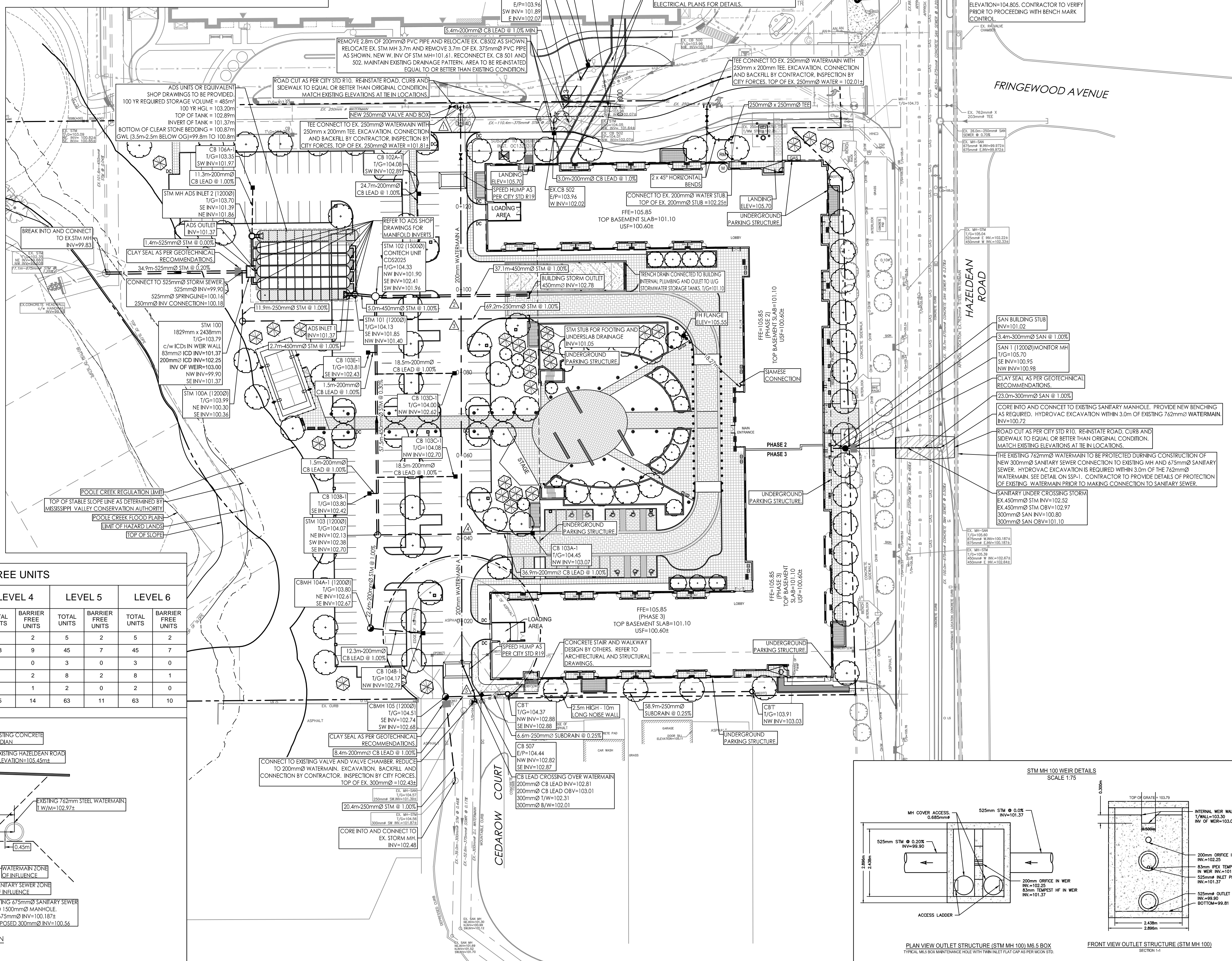
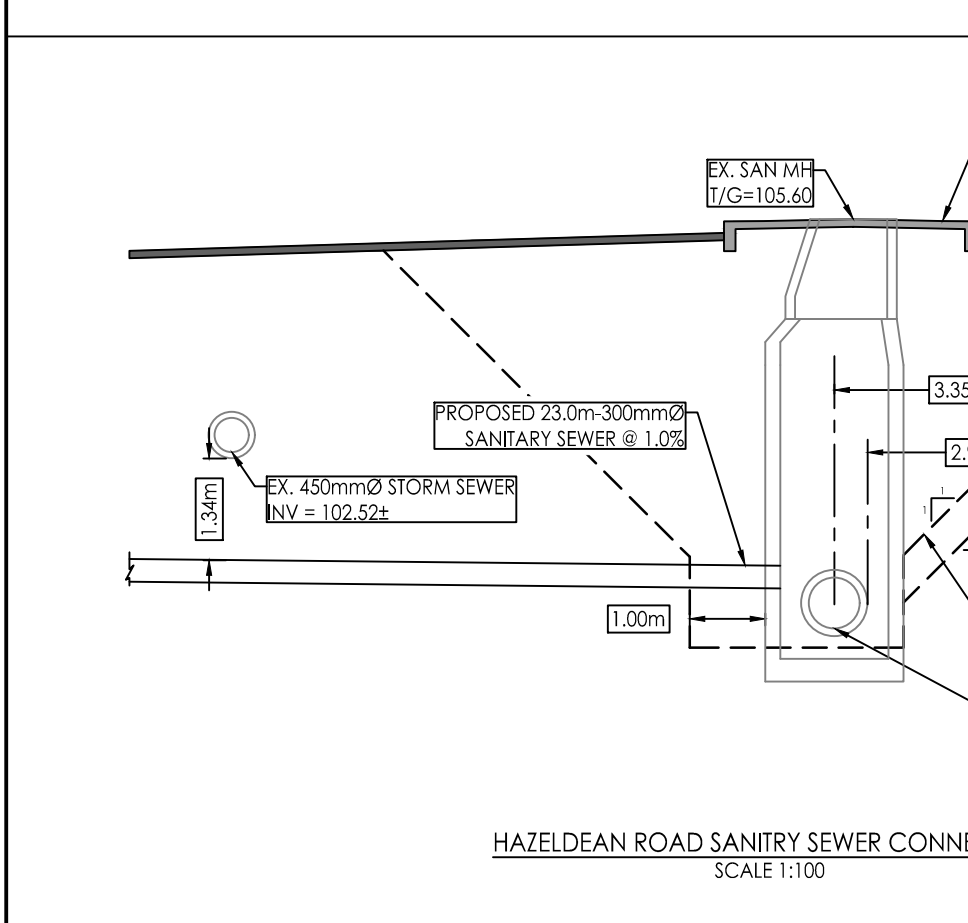
\* BRACKETS DENOTE ADJUSTED VALUE WITH CONCRETE PIPE THICKNESS

**CITY OF OTTAWA GROSS FLOOR AREAS & AMENITY AREAS(2&3)**

Level	Area	City GFA	Amenity Area	Communal Amenity Area	Commercial
LEVEL 01	1801.58 m²	1801.58 m²	0.00 m²	0.00 m²	0.00 m²
LEVEL 01	160.24 m²	0.00 m²	160.24 m²	0.00 m²	0.00 m²
LEVEL 01	3182.96 m²	0.00 m²	0.00 m²	3182.96 m²	0.00 m²
LEVEL 01	950.85 m²	0.00 m²	0.00 m²	0.00 m²	950.85 m²
LEVEL 02	3640.94 m²	0.00 m²	0.00 m²	0.00 m²	0.00 m²
LEVEL 02	315.00 m²	0.00 m²	315.00 m²	0.00 m²	0.00 m²
LEVEL 02	124.77 m²	0.00 m²	0.00 m²	124.77 m²	0.00 m²
LEVEL 03	3875.75 m²	3875.75 m²	0.00 m²	0.00 m²	0.00 m²
LEVEL 03	373.83 m²	0.00 m²	373.83 m²	0.00 m²	0.00 m²
LEVEL 04	3812.03 m²	3812.03 m²	0.00 m²	0.00 m²	0.00 m²
LEVEL 04	375.40 m²	0.00 m²	375.40 m²	0.00 m²	0.00 m²
LEVEL 05	3518.63 m²	3518.63 m²	0.00 m²	0.00 m²	0.00 m²
LEVEL 05	558.52 m²	0.00 m²	558.52 m²	0.00 m²	0.00 m²
LEVEL 06	3526.92 m²	3526.92 m²	0.00 m²	0.00 m²	0.00 m²
LEVEL 06	460.12 m²	0.00 m²	460.12 m²	0.00 m²	0.00 m²
Grand total	26678.13 m²	20176.45 m²	2243.10 m²	3307.73 m²	950.85 m²

**UNIT TYPES AND BARRIER FREE UNITS**

	LEVEL 1		LEVEL 2		LEVEL 3		LEVEL 4		LEVEL 5		LEVEL 6	
	TOTAL UNITS	BARRIER FREE UNITS	TOTAL UNITS	BARRIER FREE UNITS	TOTAL UNITS	BARRIER FREE UNITS	TOTAL UNITS	BARRIER FREE UNITS	TOTAL UNITS	BARRIER FREE UNITS	TOTAL UNITS	BARRIER FREE UNITS
STUDIO	0	0	6	2	9	2	9	2	5	2	5	2
1 BED	22	0	39	6	41	7	43	9	45	7	45	7
1 BED + DEN	2	1	3	1	3	1	3	0	3	0	3	0
2 BED	4	2	10	2	10	2	8	2	8	2	8	1
2 BED + DEN	0	0	2	1	2	1	2	1	2	0	2	0
TOTALS	28	3	60	12	65	13	65	14	63	11	63	10



W:\016401511\Drawings\16401511-DB 2.dwg  
23/06/2023 09:53 AM By: j.mitchell, Dcm