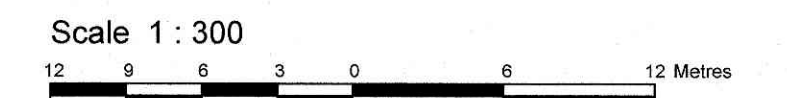


'WELLINGS BUILDING'  
5731 HAZELDEAN ROAD  
CITY OF OTTAWA

Prepared by Annis, O'Sullivan, Vollebakk Ltd.  
Field Work Completed November 1, 2021



Metric  
DISTANCES SHOWN ON THIS PLAN ARE IN METRES AND  
CAN BE CONVERTED TO FEET BY DIVIDING BY 0.3048

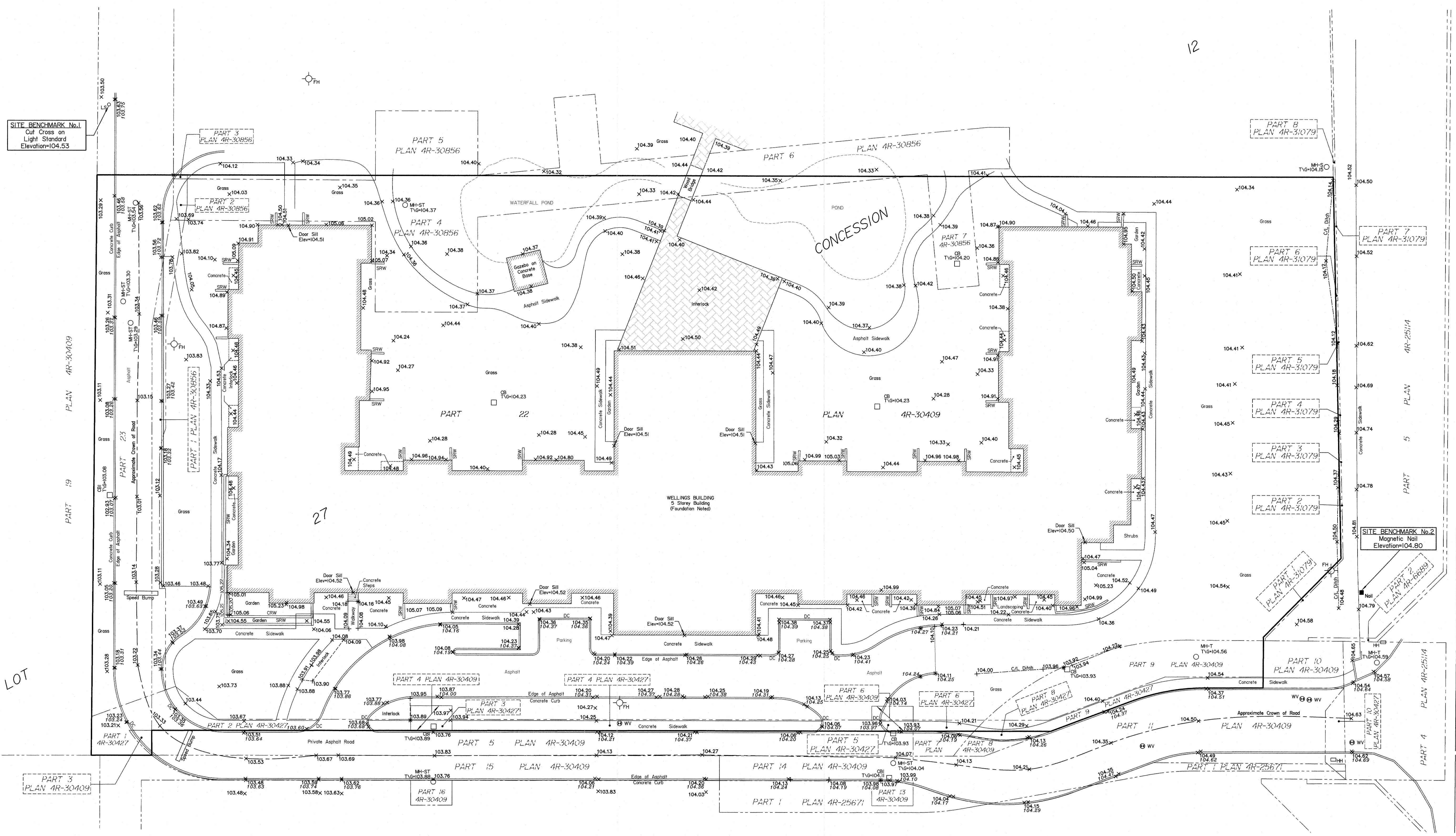
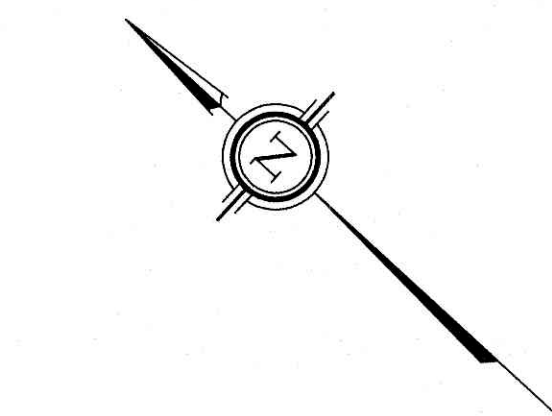
Notes & Legend

Denotes	
⊕ FH	Fire Hydrant
⊕ WV	Water Valve
⊕ SP	Water Stand Post
⊕ MH-ST	Maintenance Hole (Storm Sewer)
⊕ MH-S	Maintenance Hole (Sanitary)
⊕ MH-T	Maintenance Hole (Traffic)
⊕ MH-H	Maintenance Hole (Hydro)
⊕ CB	Catch Basin
⊕ CBI	Catch Basin Inlet
⊕ HM	Hydro Meter
⊕ HH	Handhole
T/G	Top of Gate
+65.00	Location of Elevations
+65.00	Top of Wall Elevations
+65.00	Top of Concrete Curb Elevation
SRW	Stone Retaining Wall
CRW	Concrete Retaining Wall
⊕ LS	Light Standard
DC	Depressed Curb
---	Property Line
C/L	Centreline

Caution  
This is NOT a Plan of Survey and shall not be used except for the purpose indicated in the title block.

ELEVATION NOTES  
1. Elevations shown are geodetic and are referred to the CGVD28 geodetic datum.  
2. It is the responsibility of the user of this information to verify that the job benchmark has not been altered or disturbed and that its relative elevation and description agrees with the information shown on this drawing.

UTILITY NOTES  
1. This drawing cannot be accepted as acknowledging all of the utilities and it will be the responsibility of the user to contact the respective utility authorities for confirmation.  
2. Only visible surface utilities were located.  
3. A field location of underground plant by the pertinent utility authority is mandatory before any work involving breaking ground, probing, excavating etc.



HAZELDEAN ROAD (REGIONAL ROAD No. 36)