

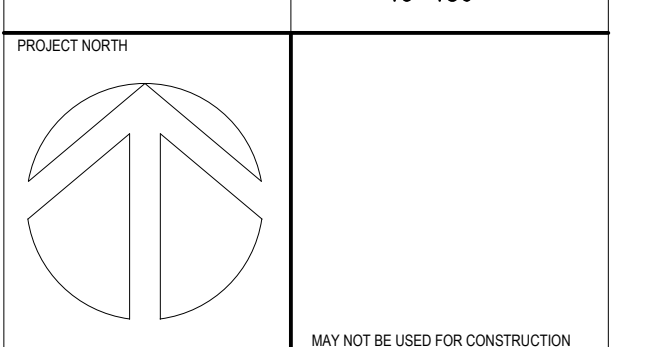
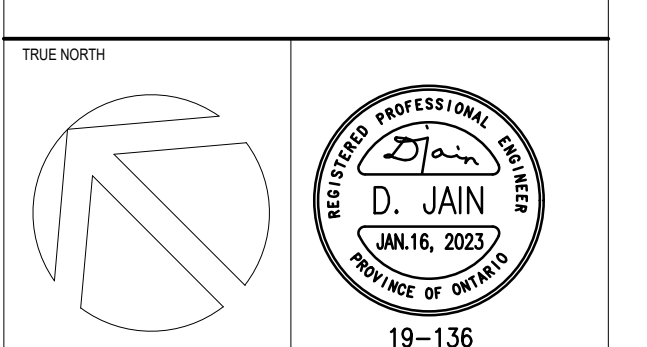
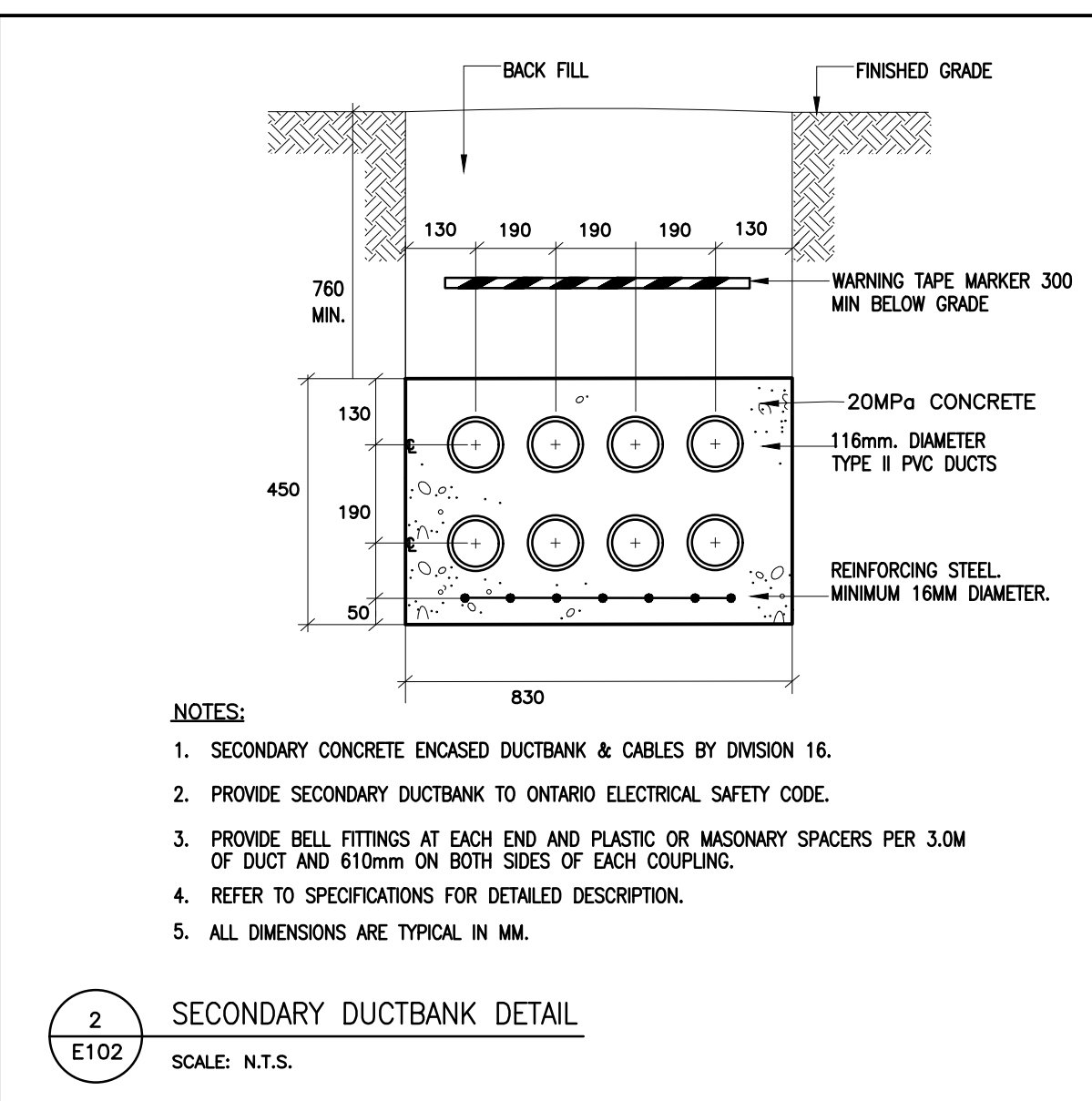
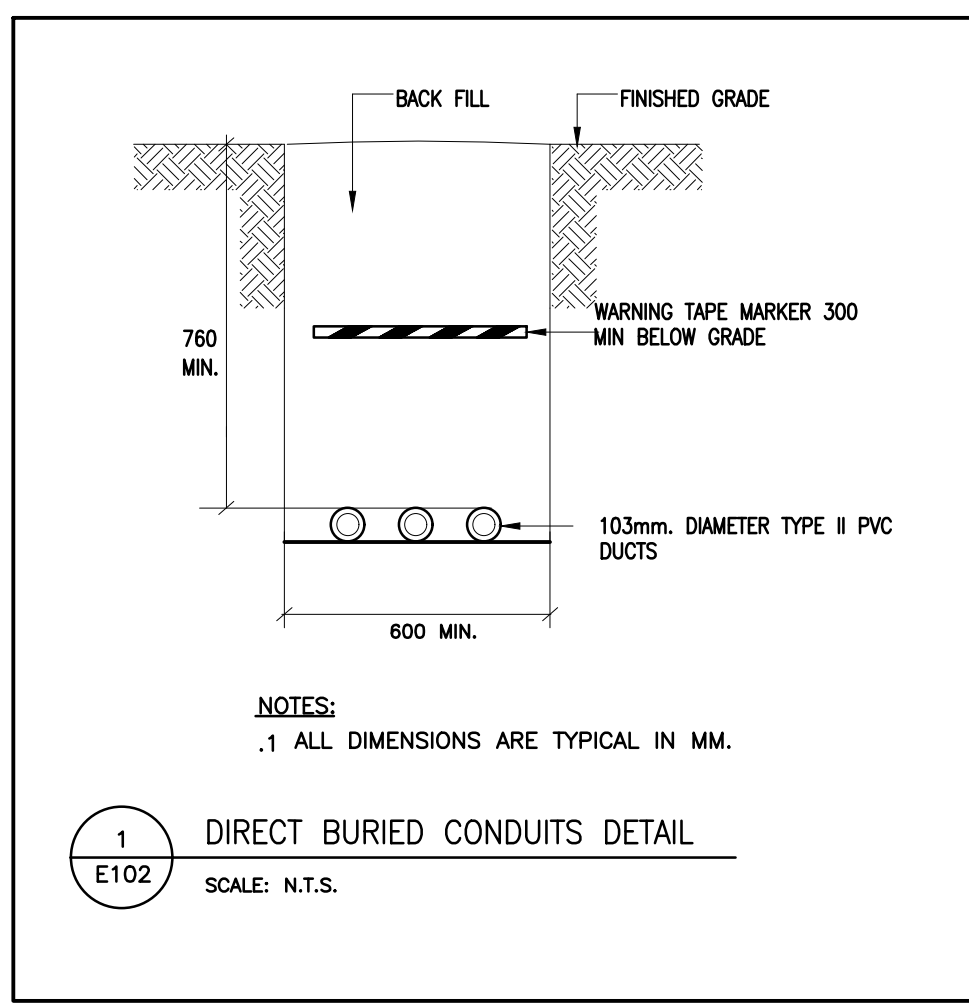
DO NOT SCALE THE DRAWINGS

**RELEASE / REVISION RECORD**

No.	Description	Date
1	Issued for Permit	21-12-22
2	Issued for SPA Re-submission	26-02-2023
3	Issued for Tender	03-12-2022
4	ADD E1	04-01-2023
5	Revised for Permit	08-12-2022
6	Issued for Tender	23-08-2022
7	Re-submission for Building Permit	02-10-2022
8	Issued for SPA Amendment	01-08-2023
9		
10		
11		
12		

LUMINAIRE SCHEDULE					
TYPE	DESCRIPTION	LAMPS AND BALLAST	CATALOGUE NO.	OWNER SUPPLIED	DNV. 16 SUPPLIED
W2	EXTERIOR LED STEP AND RISE LIGHTS, DIE-CAST ALUMINUM CONSTRUCTION. FROTHING LIGHT WITH HIGH PERFORMANCE, SELF-COMPENSATING SILICONE GASKETING COMPLETELY EXCLUDES MOISTURE. THE REBRED GUARD FACE PLATE OFFERS VERTICAL PROTECTION FOR GLASS LENS. COLOR FINISH TO BE CONFIRMED BY ARCHITECT. FULL CUT-OFF, MOUNTED @ 2" AFF. APPLICATION: EXTERIOR	5.6W LED LM AND 120V DRIVER, 3000K, 800R	WE-EF #R9354 LED-197-0352		✓
W1	EXTERIOR LED WALL SCONCE, DIE-CAST ALUMINUM CONSTRUCTION, C/W CLEAR TEMPERED GLASS LENS. COLOR FINISH TO BE CONFIRMED BY ARCHITECT. FULL CUT-OFF, MOUNTED @ 9" AFF. APPLICATION: EXTERIOR	10.2W LED AND 120V DRIVER, 3000K, 800R	TECH LIGHTING #FOOTRAGS3010CUKUNVS		✓
W4	EXTERIOR LED WALL SCONCE, DIE-CAST ALUMINUM CONSTRUCTION, C/W CLEAR TEMPERED GLASS LENS. COLOR FINISH TO BE CONFIRMED BY ARCHITECT. FULL CUT-OFF, MOUNTED @ 9" AFF. APPLICATION: EXTERIOR	10.2W LED AND 120V DRIVER, 3000K, 800R	TECH LIGHTING #FOOTRAGS3010CUKUNVS		✓
W3	EXTERIOR LED WALL SCONCE, DIE-CAST ALUMINUM CONSTRUCTION, C/W CLEAR TEMPERED GLASS LENS. COLOR FINISH TO BE CONFIRMED BY ARCHITECT. FULL CUT-OFF, MOUNTED @ 9" AFF. APPLICATION: EXTERIOR	10.2W LED AND 120V DRIVER, 3000K, 800R	TECH LIGHTING #FOOTRAGS3010CUKUNVS		✓
LP1	EXTERIOR SINGLE HEAD HIGH PERFORMANCE POLE LED LUMINAIRE, FULL CUT-OFF, C/W INTERNAL HOUSING SIDE SHEILD. OVERALL HEIGHT IS 15' INCLUDING 14' HIGH ROUND SHAPE POLE AND 2' HIGH BASE. FINISH AS PER ARCHITECT'S SELECTION. APPLICATION: SITE	102.77W LED AND 247V DRIVER, 3000K, 700R	OREE #ARE-EDG-MB-xx-06-E-UH-xx-525-30K		✓
LR	EXTERIOR SINGLE HEAD HIGH PERFORMANCE POLE LED LUMINAIRE, FULL CUT-OFF, C/W INTERNAL HOUSING SIDE SHEILD. OVERALL HEIGHT IS 15' INCLUDING 14' HIGH SQUARE SHAPE POLE AND 2' HIGH BASE. FINISH AS PER ARCHITECT'S SELECTION. APPLICATION: SITE	104.2W LED 10580LM AND 247V DRIVER, 3000K, 700R	ERALLIX #AE-00-82-100W-4000K-X-H-14-X-X-BACK SHIELD		✓
B	EXTERIOR 3/8" HIGH 4" DIA LED BOLLARD, LOW COPPER CASE ALUMINUM ALLOY BODY WITH A CYLINDRICAL EXTENDED ALUM BASE HOUSING. FULL CUT-OFF, C/W INTERNAL DRIVER. FINISH AS PER ARCHITECT'S SELECTION. APPLICATION: SITE PARKING PER LANDSCAPING	15.2W LED 1600LM AND 120V DRIVER, 3000K, 800R	TECH LIGHTING #FOOTRAGS3030ZUNVGC		✓
LR1	EXTERIOR SINGLE HEAD HIGH PERFORMANCE POLE LED LUMINAIRE, FULL CUT-OFF, C/W INTERNAL HOUSING SIDE SHEILD. OVERALL HEIGHT IS 20' INCLUDING 18' HIGH SQUARE SHAPE POLE AND 4' HIGH BASE. FINISH AS PER ARCHITECT'S SELECTION. APPLICATION: SITE	300W LED 40500LM AND 247V DRIVER, 3000K, 800R	ERALLIX #AE-00-01-3000X-0-40-TM-B-BK		✓
PW	EXTERIOR LED PLANTER WALL RECESSED STEP LIGHT, DIE-CAST ALUMINUM CONSTRUCTION. FROTHING LIGHT WITH HIGH PERFORMANCE, SELF-COMPENSATING SILICONE GASKETING COMPLETELY EXCLUDES MOISTURE. THE REBRED GUARD FACE PLATE OFFERS VERTICAL PROTECTION FOR GLASS LENS. COLOR FINISH TO BE CONFIRMED BY ARCHITECT. FULL CUT-OFF, MOUNTED @ 2" AFF. APPLICATION: LANDSCAPING PLANTER WALLS	30.6W LED 407LM AND 120V DRIVER, 3000K, 800R	KLUZCO #KWT311-BK		✓

NOTES:  
 1. ONLY "SHIELDED" LIGHTING FIXTURES ARE PERMITTED FOR ALL DEVELOPMENT, EXCEPT FOR DETACHED AND SEMI-DETACHED DWELLINGS WITHIN 50 M (164 FT.) OF A RESIDENTIALLY ZONED PROPERTY AND MUST CONFORM TO THE ENGINEER CERTIFIED LIGHTING PLAN.  
 2. THE OWNER, CONTRACTOR AND APPLICANT TO CONSTRUCT AND INSTALL "SHIELDED" LIGHTING FIXTURES ON THE SUBJECT LANDS IN CONFORMANCE WITH THE SITE PLAN AND ENGINEER CERTIFIED LIGHTING PLAN TO THE SATISFACTION OF THE CITY OF OTTAWA.



**WELLINGS OF STITTSVILLE PHASE 2**  
 20 CEDARROW COURT, STITTSVILLE, ON  
 PROJECT NO: 19-1704  
 DRAWN: LS  
 CHECKED: LY  
 DATE: As indicated

**SITE PLAN - ELECTRICAL DETAILS**

**E102**