

BUILDING ELEVATIONS WITH BIRD SAFE GLASS OVERLAY - September 01, 2023

Response to Environmental Planning Comment #14

NOTE: THIS DRAWING IS THE PROPERTY OF THE ARCHITECT AND MAY NOT BE REPRODUCED OR USED WITHOUT THE EXPRESSED CONSENT OF THE ARCHITECT. THE CONTRACTOR SHALL CHECK AND REPORT ALL DIMENSIONS AND REPORT ANY DISCREPANCIES OR DISCREPANCIES TO THE ARCHITECT BEFORE PROCEEDING WITH THE WORK.

DO NOT SCALE THE DRAWINGS

RELEASE / REVISION RECORD		
No.	Description	Date
1	Issued for SPC Coordination Meeting	23.08.11
2	Issued for Internal Review	23.08.12
3	Issued for H&E Tender	23.08.19
4	Issued for Revisions to Building Permit	23.09.02
5	Issued for SPC Amendment	23.07.16
6	Issued for Coordination	23.09.10
7	Issued for Full Building Permit	23.09.16
8	Issued for Response to SPC Comments	23.09.16
9	Issued for Energy Windows & Screen Tracker	23.09.03
10	Issued for Response to SPC Comments	23.09.01

MATERIAL SCHEDULE LEGEND

- (AL1) PRE-FINISHED ALUMINUM PANEL - WOOD GRAIN
- (AL2) PRE-FINISHED ALUMINUM PANEL - LIGHT GREY
- (AL3) PRE-FINISHED ALUMINUM PANEL - DARK GREY
- (BK) BRICK VENEER - DARK GREY

BIRD SAFE GLAZING AT EXTERIOR WINDOW WALL & CURTAIN WALL



2 EAST BUILDING KEY ELEVATION
A-200 SCALE: 1:125



1 WEST BUILDING KEY ELEVATION
A-200 SCALE: 1:125

PROJECT NUMBER

NOT TO BE USED FOR CONSTRUCTION UNLESS ISSUED BY THE ARCHITECT

chmielarchitects
200 - 109 Bank Street
Chatham, ON K1P 6N5
T (613) 234-5555
F (613) 234-6224

WELLINGS OF STITTSVILLE
PHASE 2 & 3

PROJECT NO. 19-1784 DRAWN CG
SCALE As indicated CHECKED RAC

DRAWING TITLE
KEY BUILDING ELEVATIONS

DRAWING NO. 1
A-200
PLAN NO. 18190

A-200

BUILDING ELEVATIONS WITH BIRD SAFE GLASS OVERLAY - September 01, 2023

Response to Environmental Planning Comment #14



2 WEST BUILDING ELEVATION - PHASE 2
A-200A SCALE 1: 100



1 EAST BUILDING ELEVATION - PHASE 2
A-200A SCALE 1: 100

MATERIAL SCHEDULE LEGEND

- (AL1) PRE-FINISHED ALUMINUM PANEL - WOOD GRAIN
- (AL2) PRE-FINISHED ALUMINUM PANEL - LIGHT GREY
- (AL3) PRE-FINISHED ALUMINUM PANEL - DARK GREY
- (BK1) BRICK VENEER - DARK GREY

BIRD SAFE GLAZING AT EXTERIOR WINDOW WALL & CURTAIN WALL

Exterior Wall Material Takeoff

Description	Material Name	Material Area (sq. m.)	Material Area (sq. ft.)
AL1	WOOD-COLOR ALUMINUM PLATE	2,290.02 m ²	24,849.81 SF
AL2	GREY ALUMINUM PLATE	6,235.97 m ²	67,123.42 SF
AL3	DARK GREY ALUMINUM PLATE	1,437.35 m ²	15,445.58 SF
BK1	BRICK VENEER	3,936.14 m ²	42,327.81 SF
ST1	STONE VENEER	179.27 m ²	1,924.82 SF

NOTE: THIS DRAWING IS THE PROPERTY OF THE ARCHITECT AND MAY NOT BE REPRODUCED OR USED WITHOUT THE EXPRESSED CONSENT OF THE ARCHITECT. THE CONTRACTOR SHALL CHECK AND REPORT ALL DIMENSIONS AND REPORT ANY DISCREPANCIES OR DISCREPANCIES TO THE ARCHITECT BEFORE PROCEEDING WITH THE WORK.

DO NOT SCALE THE DRAWINGS

RELEASE / REVISION RECORD

No.	Description	Date
1	Issued for Site Plan	18-11-07
2	Issued for Site Plan Update	18-11-20
3	Issued for Site Plan Coordination	20-05-19
4	Issued for Interior Design Coordination	20-10-20
5	Issued for Client Review	21-01-01
6	Issued for Coordination	21-03-04
7	Issued for Coordination	21-11-04
8	Issued for Coordination	21-12-08
9	Issued for Building Permit	21-12-20
10	Issued for Coordination	22-01-28
11	Issued for Coordination	22-02-04
12	Issued for Tender Package 2	22-03-21
13	Issued for Tender Package 2 - Addendum #3	22-04-01
14	Issued for Consultant Coordination	22-08-13
15	Issued for SPC Coordination Meeting	22-08-11
16	Issued for Internal Review	22-08-12
17	Issued for MBE Tender	22-08-19
18	Issued for Reconciliation to Building Permit	22-10-02
19	Issued for SPC Amendment	23-01-16
20	Issued for Coordination	23-02-10
21	Issued for Full Building Permit	23-05-16
22	Issued for Response to SPC Comments	23-06-16
23	Issued for Emergency Windows & Storm Tender	23-08-03
24	Issued for Response to SPC Comments	23-08-01

PROJECT NUMBER: 19-1784

WE WILL BE USED FOR CONSTRUCTION ONLY ISSUED BY THE ARCHITECT

chmielarchitects
200 - 109 Bank Street
Ottawa, ON K1P 0N5
T (613) 234-5555
F (613) 234-6224

WELLINGS OF STITTSVILLE PHASE 2
20 CEDARON COURT, STITTSVILLE, ON

PROJECT NO: 19-1784 DRAWN: CG
SCALE: 1:100 CHECKED: ECRAC

DRAWING TITLE: EAST & WEST BUILDING ELEVATIONS - PHASE 2

DRAWING NO: A-200A

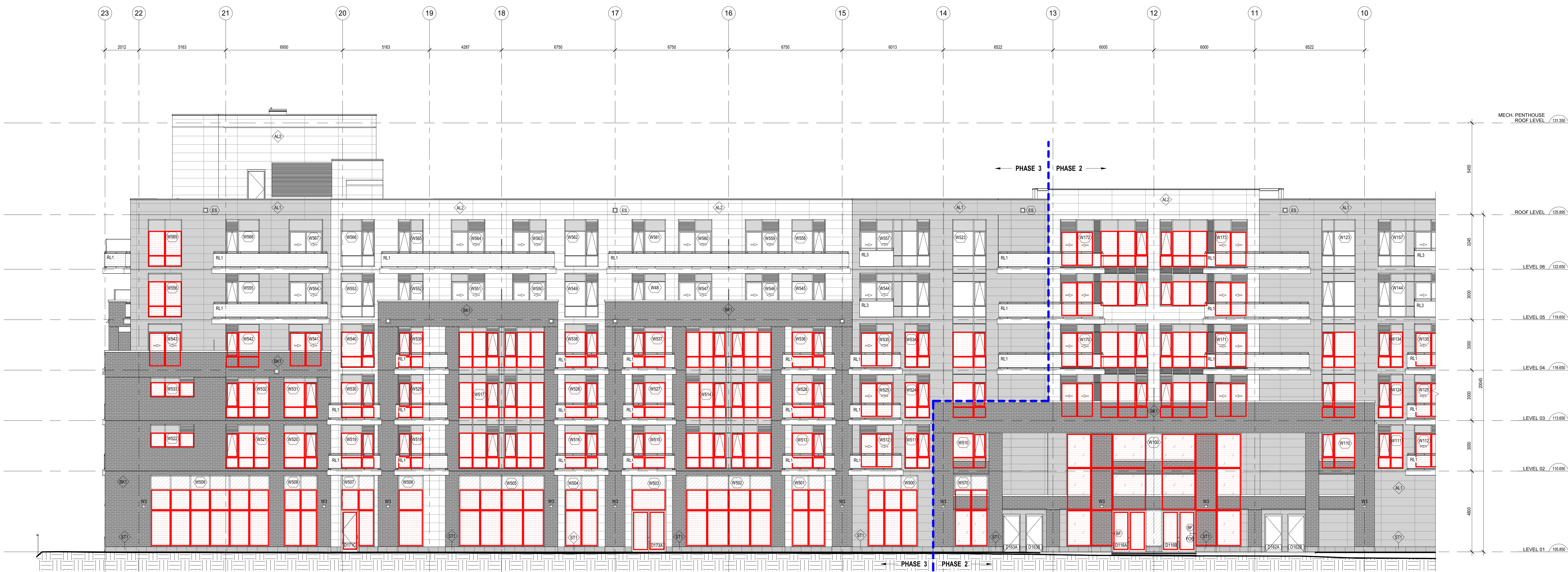
PLAN No. 18190

BUILDING ELEVATIONS WITH BIRD SAFE GLASS OVERLAY - September 01, 2023

Response to Environmental Planning Comment #14



2 WEST BUILDING ELEVATION - PHASE 3
SCALE 1:100



1 EAST BUILDING ELEVATION - PHASE 3
SCALE 1:100

MATERIAL SCHEDULE LEGEND

- (AL1) PRE-FINISHED ALUMINUM PANEL - WOOD GRAIN
- (AL2) PRE-FINISHED ALUMINUM PANEL - LIGHT GREY
- (AL3) PRE-FINISHED ALUMINUM PANEL - DARK GREY
- (BK1) BRICK VENEER - DARK GREY

BIRD SAFE GLAZING AT EXTERIOR WINDOW WALL & CURTAIN WALL

Exterior Wall Material Takeoff

Material Description	Material Name	Material Area (sq.m.)	Material Area (sq.ft.)
AL1	WOOD-COLOR ALUMINUM PLATE	2,292.02	24,649.81
AL2	GREY ALUMINUM PLATE	6,235.87	67,233.42
AL3	DARK GREY ALUMINUM PLATE	1,407.35	15,148.58
BK1	BRICK VENEER	5,308.14	57,257.81
BK1	STONE VENEER	1,762.47	18,934.52

NOTE: THIS DRAWING IS THE PROPERTY OF THE ARCHITECT AND MAY NOT BE REPRODUCED OR USED WITHOUT THE EXPRESSED CONSENT OF THE ARCHITECT. THE CONTRACTOR SHALL CHECK AND VERIFY ALL DIMENSIONS AND REPORT ANY DISCREPANCIES OR DISCREPANCIES TO THE ARCHITECT BEFORE PROCEEDING WITH THE WORK.

DO NOT SCALE THE DRAWINGS

RELEASE / REVISION RECORD

No.	Description	Date
1	Issued for Response to Building Permit Comments	22.04.26
2	Issued for Consideration	22.06.13
3	Issued for SPC Coordinator Meeting	22.08.11
4	Issued for Internal Review	22.08.12
5	Issued for M&E Tender	22.09.19
6	Issued for Resubmission to Building Permit	22.12.02
7	Issued for SPC Assessment	23.01.16
8	Issued for Coordinator	23.02.10
9	Issued for Full Building Permit	23.05.16
10	Issued for Response to SPC Comments	23.06.16
11	Issued for Complete Windows & Doors Tender	23.08.03
12	Issued for Response to SPC Comments	23.09.01

PROJECT NUMBER

WE NOT BE USED FOR CONSTRUCTION UNLESS ISSUED BY THE ARCHITECT

chmielarchitects
200 - 109 Bank Street
Ottawa, ON K1P 0A5
T (613) 234-5555
F (613) 234-6224

WELLINGS OF STITTSVILLE PHASE 3

20 CEDARON COURT, STITTSVILLE, ON

PROJECT NO: 19-1764 DRAWN: DS
SCALE: 1:100 CHECKED: EC/CG

DATE: 09/01/23

EAST & WEST BUILDING ELEVATIONS - PHASE 3

DRAWING: A-200B

FILE NO: 2017-23-0008

PLAN NO: 18190

BUILDING ELEVATIONS WITH BIRD SAFE GLASS OVERLAY - September 01, 2023

Response to Environmental Planning Comment #14



2 SOUTH BUILDING ELEVATION - PHASE 2
SCALE 1 : 100



1 NORTH BUILDING ELEVATION - PHASE 2
SCALE 1 : 100

MATERIAL SCHEDULE LEGEND

- (AL1) PRE-FINISHED ALUMINUM PANEL - WOOD GRAIN
- (AL2) PRE-FINISHED ALUMINUM PANEL - LIGHT GREY
- (AL3) PRE-FINISHED ALUMINUM PANEL - DARK GREY
- (BK1) BRICK VENEER - DARK GREY

BIRD SAFE GLAZING AT EXTERIOR WINDOW WALL & CURTAIN WALL

Exterior Wall Material Takeoff

Description	Material Name	Material Area (sq.m.)	Material Area (sq.ft.)
AL1	WOOD-COLOR ALUMINUM PLATE	2,290.02 m ²	24,649.81 SF
AL2	GREY ALUMINUM PLATE	6,229.87 m ²	67,123.42 SF
AL3	DARK GREY ALUMINUM PLATE	1,437.35 m ²	15,468.54 SF
BK1	BRICK VENEER	3,936.14 m ²	42,327.81 SF
ST1	STONE VENEER	1,176.23 m ²	12,603.62 SF

RELEASE / REVISION RECORD

No.	Description	Date
1	Issued for Site Plan	18.11.07
2	Issued for Site Plan Update	18.11.20
3	Issued for Site Plan Coordination	20.05.19
4	Issued for Interior Design Coordination	20.10.20
5	Issued for Client Review	21.01.01
6	Issued for Coordination	21.03.04
7	Issued for Coordination	21.11.04
8	Issued for Coordination	21.12.08
9	Issued for Building Permit	21.12.20
10	Issued for Coordination	22.01.28
11	Issued for Coordination	22.02.04
12	Issued for Tender Package 2	22.03.01
13	Issued for Tender Package 2 - Addendum #3	22.04.01
14	Issued for Consultant Coordination	22.08.13
15	Issued for SPC Coordination Meeting	22.08.11
16	Issued for Internal Review	22.08.12
17	Issued for MBE Tender	22.08.19
18	Issued for Reconciliation to Building Permit	22.10.02
19	Issued for SFA Amendment	23.01.16
20	Issued for Coordination	23.02.10
21	Issued for Full Building Permit	23.05.16
22	Issued for Response to SFA Comments	23.06.16
23	Issued for Emergency Windows & Storm Tracker	23.06.03
24	Issued for Response to SFA Comments	23.07.01

PROJECT NUMBER: 19-1784

chmielarchitects
200 - 109 Bank Street
Ottawa, ON K1P 0N5
T (613) 234-5555
F (613) 234-6224

WELLINGS OF STITTSVILLE PHASE 2

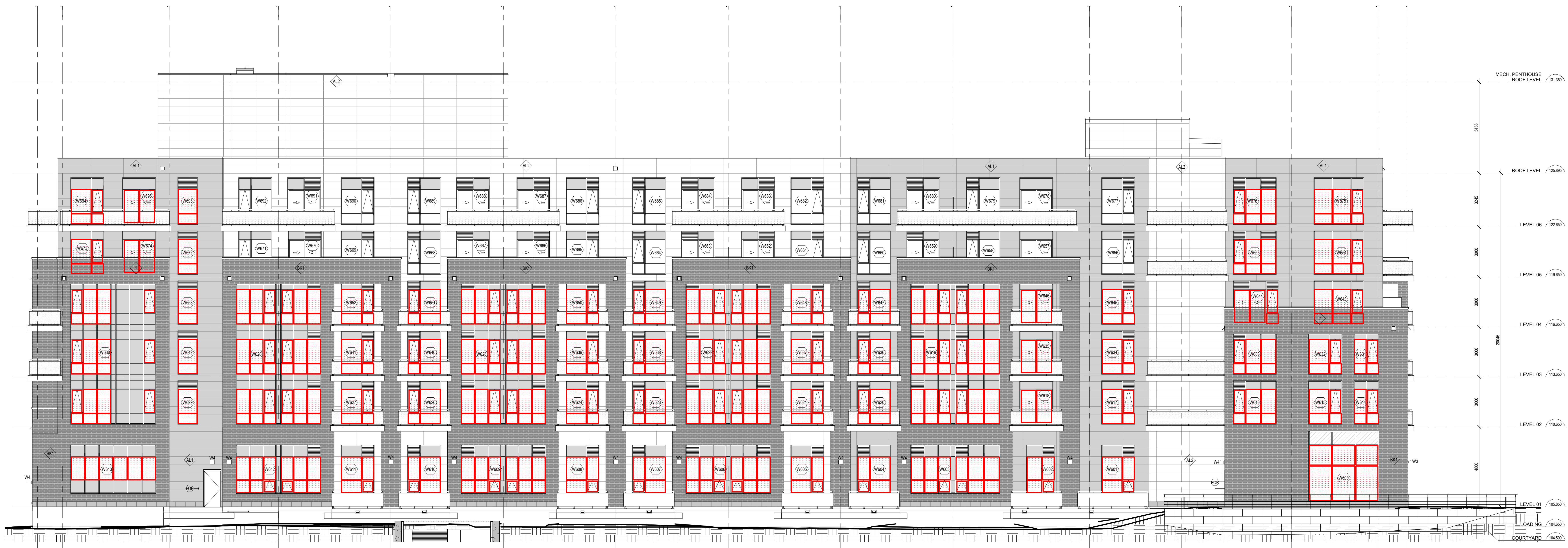
20 CEDARHURST COURT, STITTSVILLE, ON

PROJECT NO: 19-1784 DRAWN: CG
SCALE: 1 : 100 CHECKED: ECRAC

DESIGNED BY: NORTH & SOUTH BUILDING ELEVATIONS - PHASE 2

BUILDING ELEVATIONS WITH BIRD SAFE GLASS OVERLAY - September 01, 2023

Response to Environmental Planning Comment #14



2 SOUTH BUILDING ELEVATION - PHASE 3
A-201B SCALE 1:100



1 NORTH BUILDING SECTIONAL ELEVATION - PHASE 3
A-201B SCALE 1:100

MATERIAL SCHEDULE LEGEND

- (AL1) PRE-FINISHED ALUMINUM PANEL - WOOD GRAIN
- (AL2) PRE-FINISHED ALUMINUM PANEL - LIGHT GREY
- (AL3) PRE-FINISHED ALUMINUM PANEL - DARK GREY
- (BK1) BRICK VENEER - DARK GREY

BIRD SAFE GLAZING AT EXTERIOR WINDOW WALL & CURTAIN WALL

Exterior Wall Material Takeoff

Description	Material Name	Material Area (sq.m.)	Material Area (sq.ft.)
		207,000.86 sf	2,251,588.87 sf
AL1	WOOD-COLOR ALUMINUM PLATE	2,290.02 sf	24,849.81 sf
AL2	GREY ALUMINUM PLATE	6,235.87 sf	67,123.42 sf
AL3	DARK GREY ALUMINUM PLATE	1,407.35 sf	15,148.58 sf
BK1	BRICK VENEER	5,938.14 sf	64,327.81 sf
BK1	STONE VENEER	1,176.27 sf	12,604.62 sf

NOTE: THIS DRAWING IS THE PROPERTY OF THE ARCHITECT AND MAY NOT BE REPRODUCED OR USED WITHOUT THE EXPRESSED CONSENT OF THE ARCHITECT. THE CONTRACTOR SHALL CHECK AND REPORT ALL DIMENSIONS AND REPORT ANY DISCREPANCIES TO THE ARCHITECT BEFORE PROCEEDING WITH THE WORK.

DO NOT SCALE THE DRAWINGS

RELEASE / REVISION RECORD

No.	Description	Date
1	Issued for Response to Building Permit Comments	23-04-26
2	Issued for Consideration	23-06-13
3	Issued for SPC Coordinator Meeting	23-08-11
4	Issued for Internal Review	23-08-12
5	Issued for M&E Tender	23-09-19
6	Issued for Re-submission in Building Permit	23-10-02
7	Issued for SPC Assessment	23-01-16
8	Issued for Coordinator	23-02-10
9	Issued for Full Building Permit	23-05-16
10	Issued for Response to SPC Comments	23-06-16
11	Issued for Complete Windows & Doors Tender	23-08-03
12	Issued for Response to SPC Comments	23-09-01

PROJECT NUMBER: 19-1764

DATE: DS

SCALE: 1:100

DESIGNER: ECICG

chmielarchitects
200 - 109 Bank Street
Ottawa, ON K1P 0A5
T (613) 234-5555
F (613) 234-6224

WELLINGS OF STITTVILLE PHASE 3

20 CEDARON COURT, STITTVILLE, ON

NORTH & SOUTH BUILDING ELEVATIONS - PHASE 3

FILE No: 2017-23-0008

A-201B

PLAN No: 16190