

**NOTES:**

DO NOT SCALE DRAWINGS;

NOTES ARE APPLICABLE TO ALL DRAWINGS IN THE SET;

Fotenn Consultants Inc. IS NOT RESPONSIBLE FOR ACCURACY OF BASE INFORMATION;

REFER TO CIVIL ENGINEERING DRAWINGS FOR GRADING & SITE SERVICING INFORMATION;

THE CONTRACTOR IS RESPONSIBLE FOR CONFIRMING SITE CONDITIONS AND REPORTING ANY DISCREPANCIES TO THE LANDSCAPE ARCHITECT;

THE CONTRACTOR IS RESPONSIBLE FOR CONFIRMING EXACT LOCATIONS OF ALL UNDERGROUND SERVICES AND OBTAINING CLEARANCE FROM ALL APPLICABLE UTILITIES. PROPOSED WORKS FOUND TO BE IN CONFLICT WITH UNDERGROUND SERVICES MAY BE ADJUSTED AT THE DIRECTION OF THE LANDSCAPE ARCHITECT;

LANDSCAPE ELEMENTS SHOWN ARE SUBJECT TO THE FINAL LOCATION OF UNDERGROUND SERVICES AND UTILITIES;

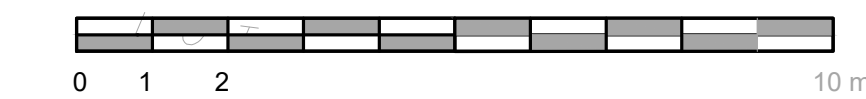
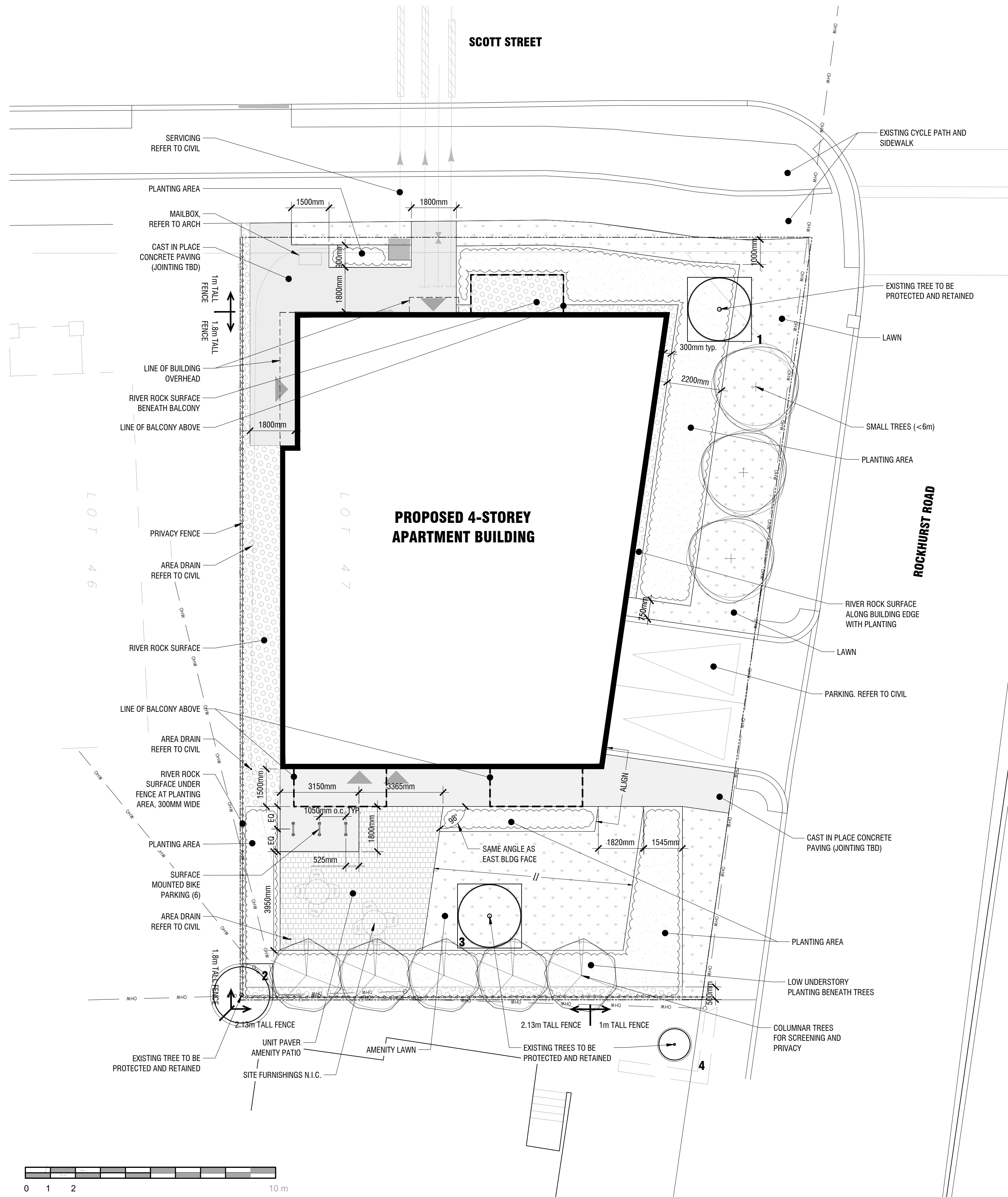
DO NOT INSTALL TREES ON PROPERTY / LOT LINES OR WITHIN DRAINAGE EASEMENTS;

PERFORM WORK IN ACCORDANCE WITH DETAILS AND SPECIFICATIONS;

ALL PLANT MATERIAL SHALL BE No. 1 NURSERY STOCK AND SHALL MEET OR EXCEED THE SPECIFICATION OF THE Canadian Standards for Nursery Stock, AS PUBLISHED BY THE Canadian Nursery Landscape Association;

SPECIES SUBSTITUTIONS ARE NOT PERMITTED WITHOUT PRIOR WRITTEN APPROVAL OF THE LANDSCAPE ARCHITECT;

ALL UN-PAVED SURFACES TO RECEIVE 150mm DEPTH TOPSOIL & SOD.



**1**  
**L1** **LANDSCAPE PLAN**  
**1:100**

Copyright Reserved  
The Copyrights to all designs and drawings are the property of Fotenn Consultants Inc. Unauthorized reproduction or use is forbidden. DO NOT SCALE DRAWING  
Copyright réservés  
Les droits d'auteur à tous les modèles et dessins sont la propriété de Fotenn Consultants Inc. Reproduction ou utilisation non autorisée est interdite. NE PAS L'ÉCHELLE DE DESSIN

Client / Client

**2851944 Ontario Inc.**

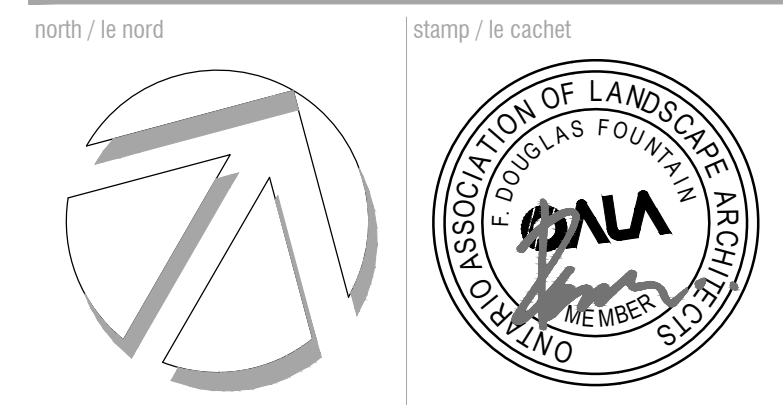
key plan / plan repère

legend / légende

- PROPERTY LINE
- - - BALCONY EXTENTS
- EXISTING TREES TO REMAIN
- CRITICAL ROOT ZONE
- SMALL DECIDUOUS TREE (REFER TO PLANTING SCHEDULE FOR SPECIES AND QUANTITIES)
- COLUMNAR TREE FOR PRIVACY (REFER TO PLANTING SCHEDULE FOR SPECIES AND QUANTITIES)
- ▨ PERENNIAL PLANTING
- ▨ LAWN (150mm DEPTH TOPSOIL AND SOD)
- ▨ RIVER ROCK
- WOOD PRIVACY FENCE HEIGHT VARIES, REFER TO PLAN

rev'n	description / la description	yyyy/mm/dd
03	re-issue per City comments for SPA	2024/01/12
02	re-issue per City comments for SPA	2023/12/13
01	re-issue per City comments for SPA	2023/08/18
00	issue for ZBLA and SPC	2022/12/14

**FOTENN Planning + Design**  
396 Cooper Street, Suite 300  
Ottawa, ON, CANADA K2P 2H7  
613.730.5709  
fotenn.com



project / projet  
**4 STOREY APARTMENT**  
**1806 Scott Street**

drawing / dessin  
**LANDSCAPE PLAN**

designed / conçu	drawn / dessiné	reviewed / examiné
<b>BM</b>	<b>BM</b>	<b>SM / DF</b>
date	project number / No. du projet	

**June 2022**  
drawing number / No. du dessin

**L1 of 3**

**PRELIMINARY**  
NOT FOR CONSTRUCTION

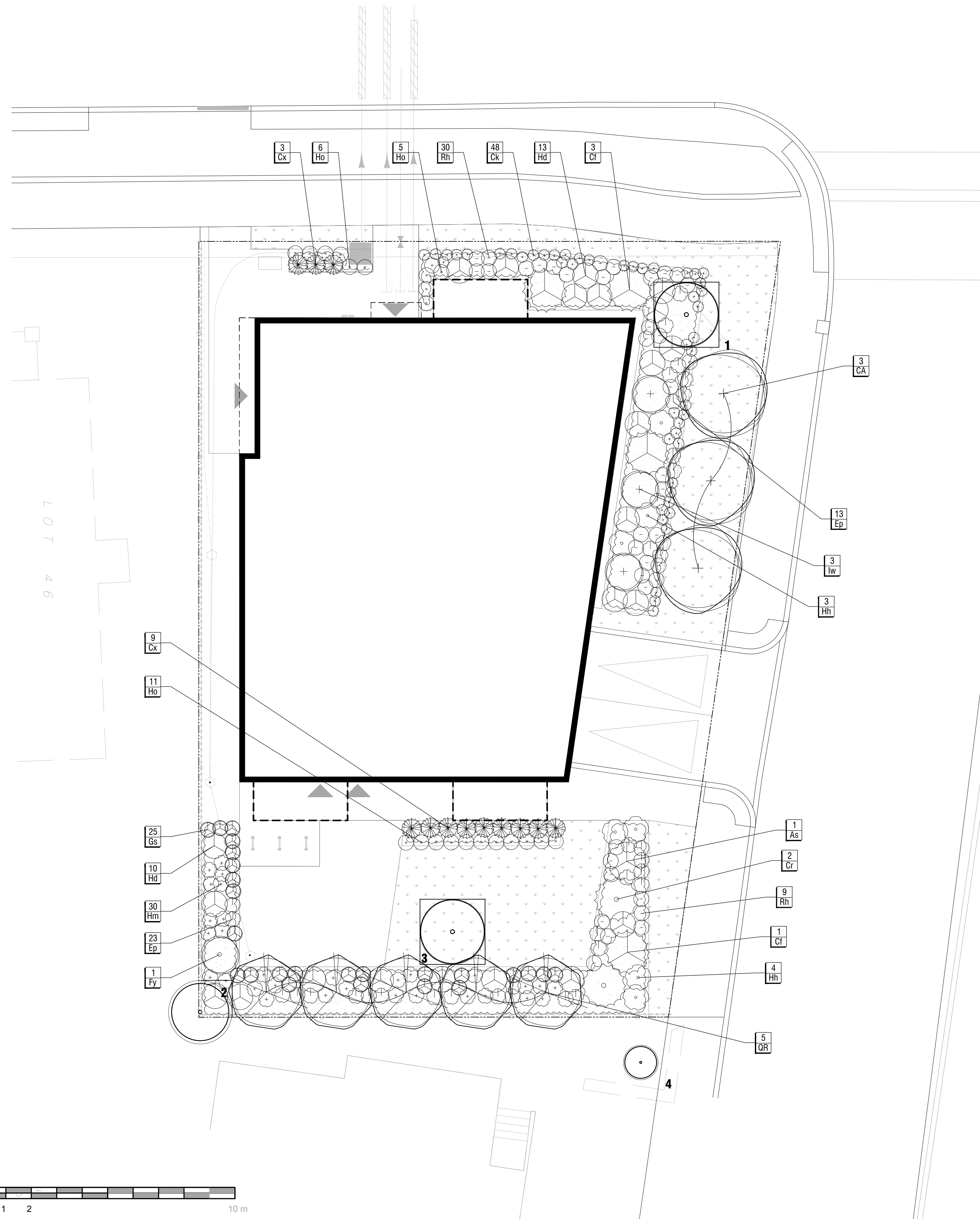
PLOT INFORMATION: DWG NAME: P:\PROJECTS\Landscape\2851944\2851944-01-L1-1806 Scott St Landscape ARCHS DESIGN DEVELOPMENT\PLANS\DWG\1806 Scott St Landscape L1.dwg PLOT DATE: 2024-01-12 2:38:47 AM SHEET SIZE: ISO (A1) (841x1189) PLOTTED BY: Brian MacIsaac LAST SAVED BY: tomahawk

D07-12-23-0006 & D02-02-23-0007



# PLANT SCHEDULE

CODE	QTY	BOTANICAL NAME	COMMON NAME	SIZE / CONDITION / SPACING
<b>TREES</b>				
CA	3	Cornus alternifolia	Pagoda Dogwood	50mm cal. / W.B.
QR	5	Quercus robur fastigiata	Pyramidal English Oak	50mm cal. / W.B.
<b>SHRUBS</b>				
As	1	Amelanchier alnifolia	Serviceberry	#3 pot / 150cm sp.
Cr	2	Cornus sericea	Red Twig Dogwood	100cm ht. / specimen quality / 2.0m sp.
Cf	4	Cornus sericea 'Flaviramea'	Yellow Twig Dogwood	100cm ht. / specimen quality / 2.0m sp.
Ck	48	Cornus sericea 'Kelsey'	Kelseys Dwarf Red Twig Dogwood	30cm ht. / 45cm sp.
Fy	1	Forsythia ovata 'Northern Gold'	Northern Gold Forsythia	60cm ht. / 1.5m sp.
Hh	7	Hydrangea macrophylla 'Endless Summer Twist & Shout'	Twist & Shout Hydrangea	60cm ht. / 1m sp.
Hd	23	Hydrangea paniculata 'Dvp Pinky'	Pinky Winky® Panicle Hydrangea	#3 Pot / 100cm sp.
Iw	3	Ilex verticillata 'Winter Red'	Winter Red Winterberry	100cm ht. / specimen quality / 1.75m sp.
<b>PERENNIALS &amp; GRASSES</b>				
Cx	12	Calamagrostis x acutiflora 'Karl Foerster'	Karl Foerster Feather Reed Grass	#2 pot / 80cm sp.
Ep	36	Echinacea purpurea	Coneflower	#1 Pot / 60cm sp.
Gs	25	Geranium sanguineum	Bloodred Geranium	#1 Pot / 60cm sp.
Ho	22	Hemerocallis x 'Stella de Oro'	Stella de Oro Daylily	#1 Pot / 60cm sp.
Hm	30	Hosta x 'Maui Buttercups'	Maui Buttercups Hosta	#1 Pot / 60cm sp.
Rh	39	Rudbeckia hirta	Black-eyed Susan	#1 Pot / 60cm sp.



**1** PLANTING PLAN  
**L2** 1:100

Copyright Reserved  
The Copyrights to all designs and drawings are the property of Fotenn Consultants Inc. Unauthorized reproduction or use is forbidden. DO NOT SCALE DRAWING  
Copyright réservés  
Les droits d'auteur à tous les modèles et dessins sont la propriété de Fotenn Consultants Inc. Reproduction ou utilisation non autorisée est interdite. NE PAS L'ÉCHELLE DE DESSIN

Client / Client  
**2851944 Ontario Inc.**

key plan / plan repère

- legend / légende
- PROPERTY LINE
  - BALCONY EXTENTS
  - EXISTING TREES TO REMAIN
  - CRITICAL ROOT ZONE
  - SMALL DECIDUOUS TREE (REFER TO PLANTING SCHEDULE FOR SPECIES AND QUANTITIES)
  - COLUMNAR TREE FOR PRIVACY (REFER TO PLANTING SCHEDULE FOR SPECIES AND QUANTITIES)
  - PERENNIAL PLANTING
  - LAWN (150mm DEPTH TOPSOIL AND SOD)

rev'n	description / la description	yyyy/mm/dd
03	re-issue per City comments for SPA	2024/01/12
02	re-issue per City comments for SPA	2023/12/13
01	re-issue per City comments for SPA	2023/08/18
00	issue for ZBLA and SPC	2022/12/14

**FOTENN Planning + Design**  
396 Cooper Street, Suite 300  
Ottawa, ON, CANADA K2P 2H7  
613.730.5709  
fotenn.com

north / le nord stamp / le cachet

project / projet  
**4 STOREY APARTMENT  
1806 Scott Street**

drawing / dessin

**PLANTING PLAN**

designed / conçu	drawn / dessiné	reviewed / examiné
<b>BM</b>	<b>BM</b>	<b>SM / DF</b>
date	project number / No. du projet	
<b>June 2022</b>		

drawing number / No. du dessin

**L2 of 3**

**PRELIMINARY  
NOT FOR CONSTRUCTION**

F:\PROJECTS\2024\1806 Scott St\LANDSCAPE ARCHITECTURE\DESIGN DEVELOPMENT\PLANTING\1806\_ScottSt\_L2.dwg PLOT DATE: 2024-01-12 10:23:23 AM SHEET SIZE: ISO (A1) (841x1189) PLOTTED BY: Brian M. Mottishaw LAST SAVED BY: bmmottishaw

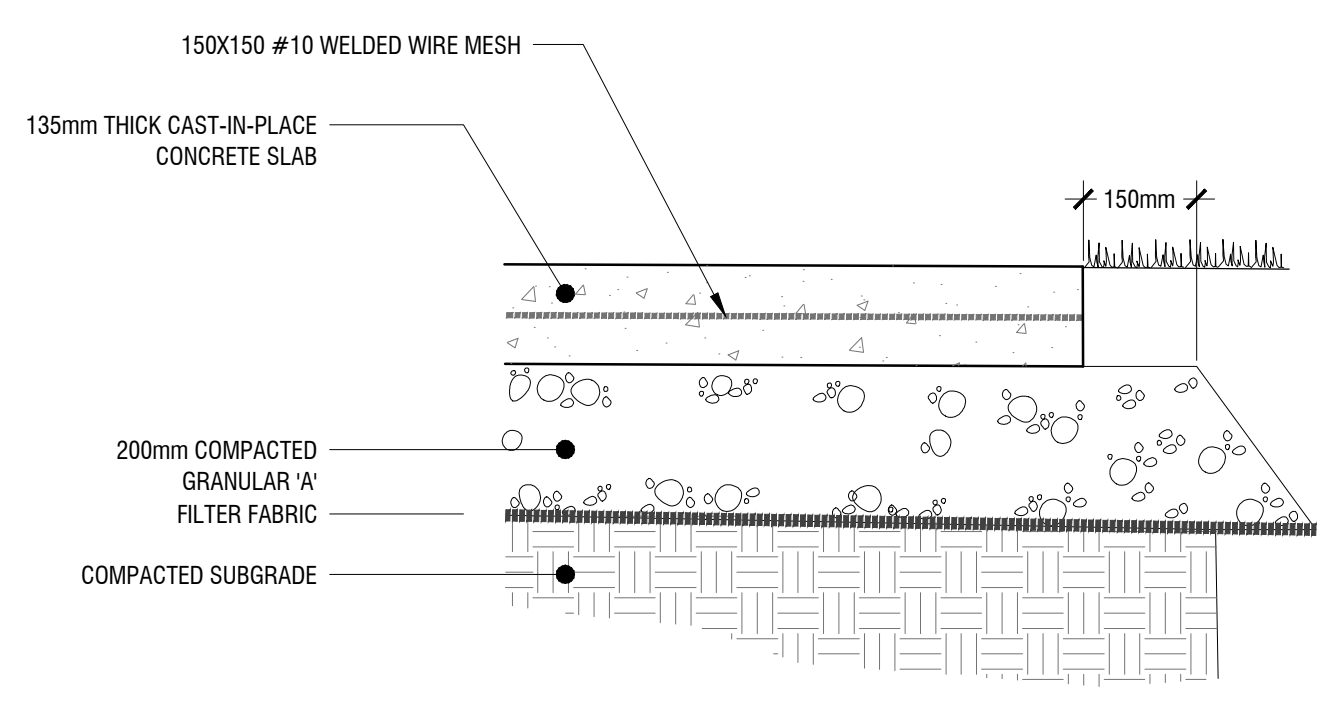
D07-12-23-0006 & D02-02-23-0007



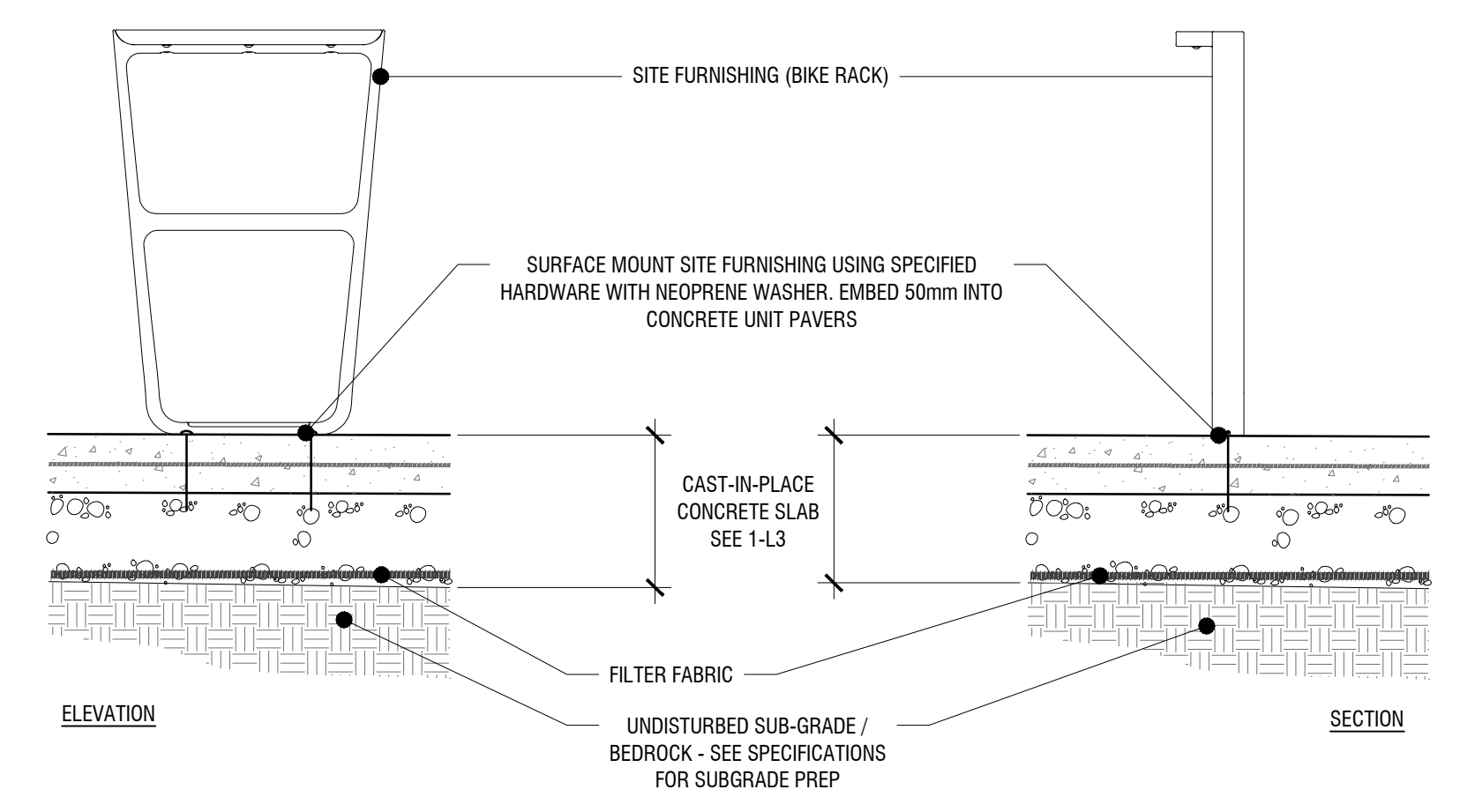
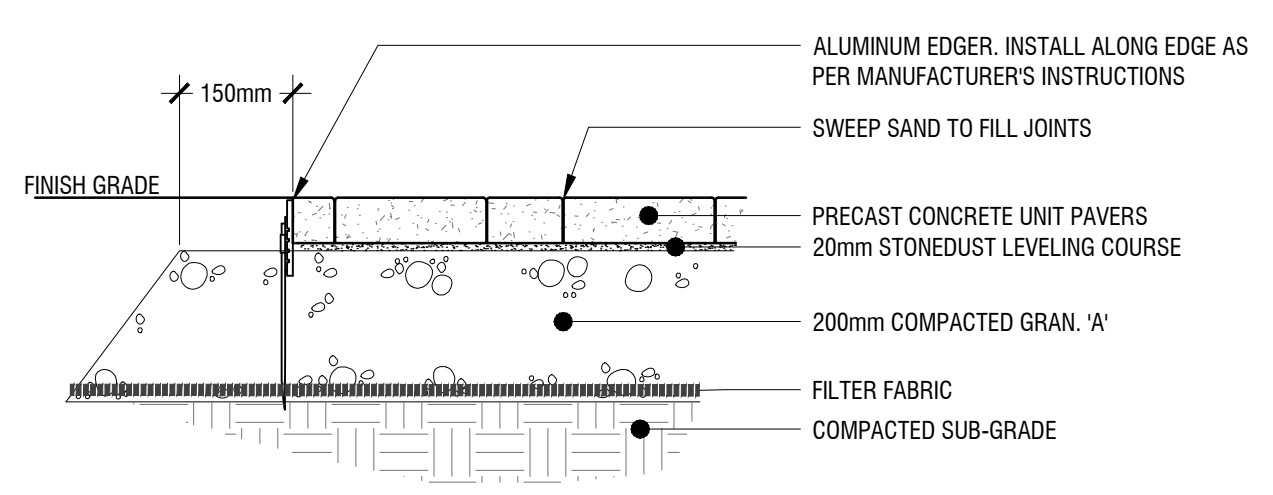
**2851944 Ontario Inc.**

key plan / plan repère

legend / légende



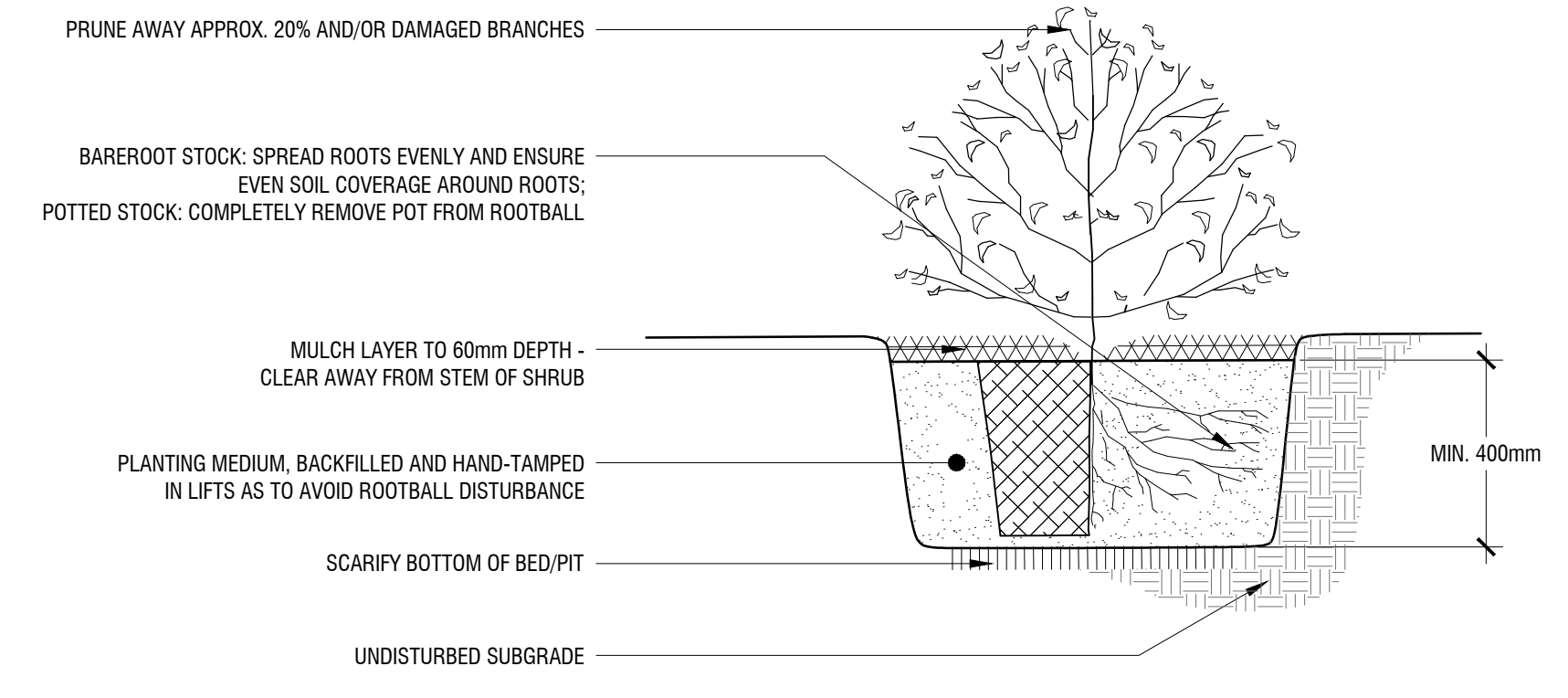
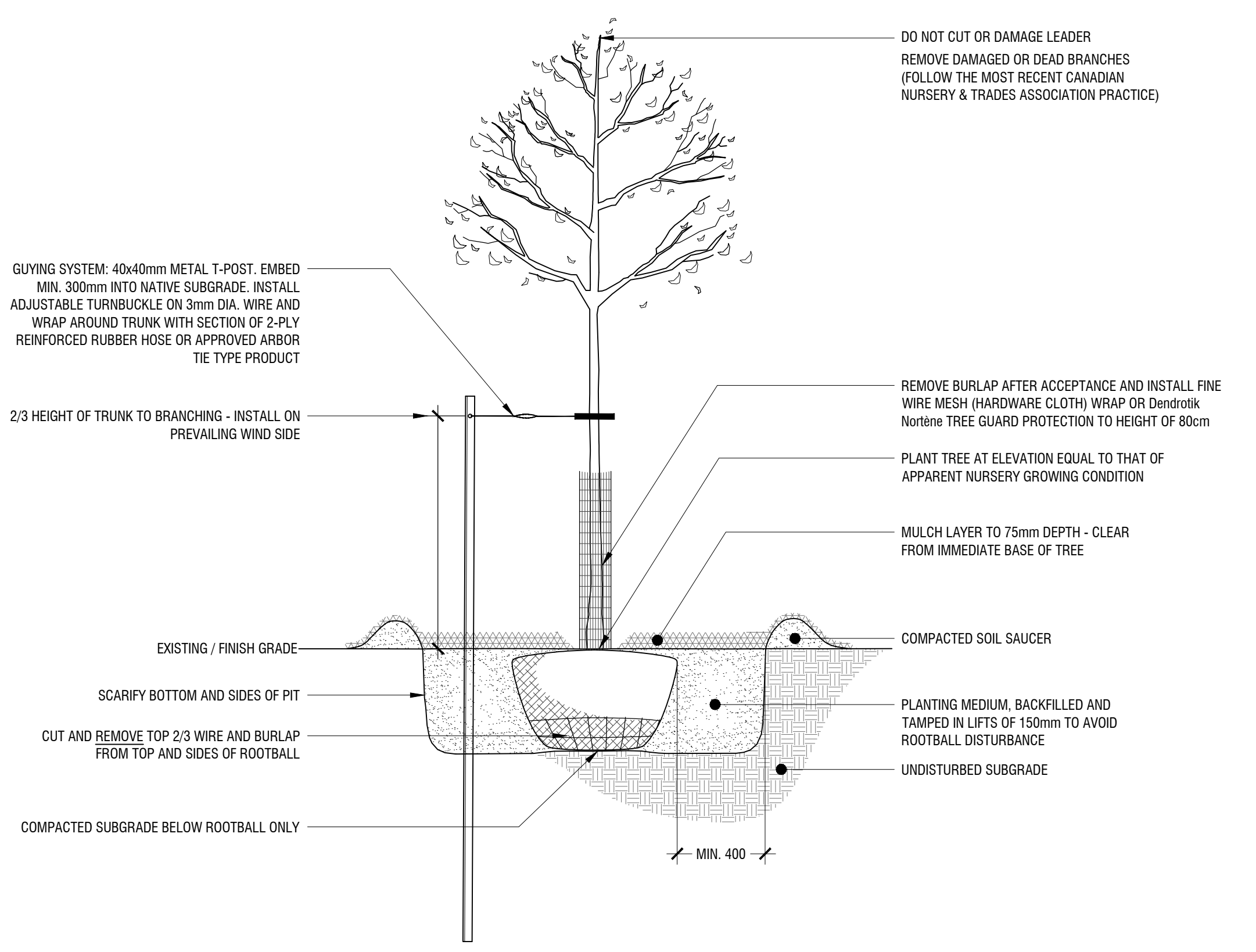
- NOTES:**
- CONCRETE TO BE 30MPa (4000 PSI) WITH 5-7% AIR ENTRAINMENT AND LIGHT BROOM FINISH;
  - EXPANSION JOINTS: 13mm THICK BITUMINOUS FIBRE BOARD WITH 300mm, 10m DOWELS @ 600mm O.C., GREASED OR SLEEVED ON ONE END;
  - SAW-CUT JOINTS: TO 10mm DEPTH;
  - SEE PLAN FOR JOINTING LAYOUT



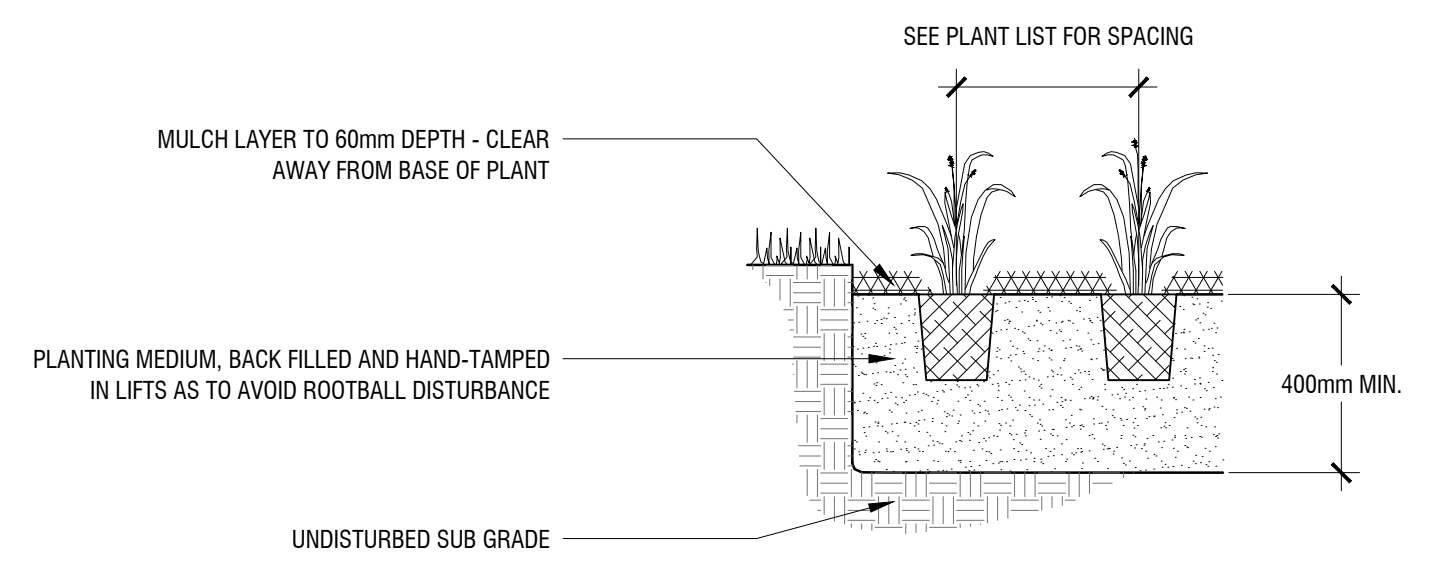
**1 CAST IN PLACE CONCRETE PAVING**  
**L3 1:10**

**2 PRECAST UNIT PAVERS**  
**L3 1:10**

**3 SURFACE MOUNTED BIKE RACK AT C.I.P. CONCRETE PAVING**  
**L3 1:15**



**5 SHRUB PLANTING**  
**L3 n.t.s.**



**6 PERENNIAL PLANTING**  
**L3 n.t.s.**

**4 DECIDUOUS TREE PLANTING**  
**L3 n.t.s.**

rev'n	description / la description	yyyy/mm/dd
03	re-issue per City comments for SPA	2024/01/12
02	re-issue per City comments for SPA	2023/12/13
01	re-issue per City comments for SPA	2023/08/18
00	issue for ZBLA and SPC	2022/12/14

**FOTENN Planning + Design**  
 396 Cooper Street, Suite 300  
 Ottawa, ON, CANADA K2P 2H7  
 613.730.5709  
 fotenn.com

project / projet

north / le nord

stamp / le cachet

**4 STOREY APARTMENT**  
**1806 Scott Street**

drawing / dessin

**LANDSCAPE DETAILS**

designed / conçu	drawn / dessiné	reviewed / examiné
<b>BM</b>	<b>BM</b>	<b>SM / DF</b>
date	project number / No. du projet	
<b>June 2022</b>		

drawing number / No. du dessin

**L3 of 3**

**PRELIMINARY**  
 NOT FOR CONSTRUCTION