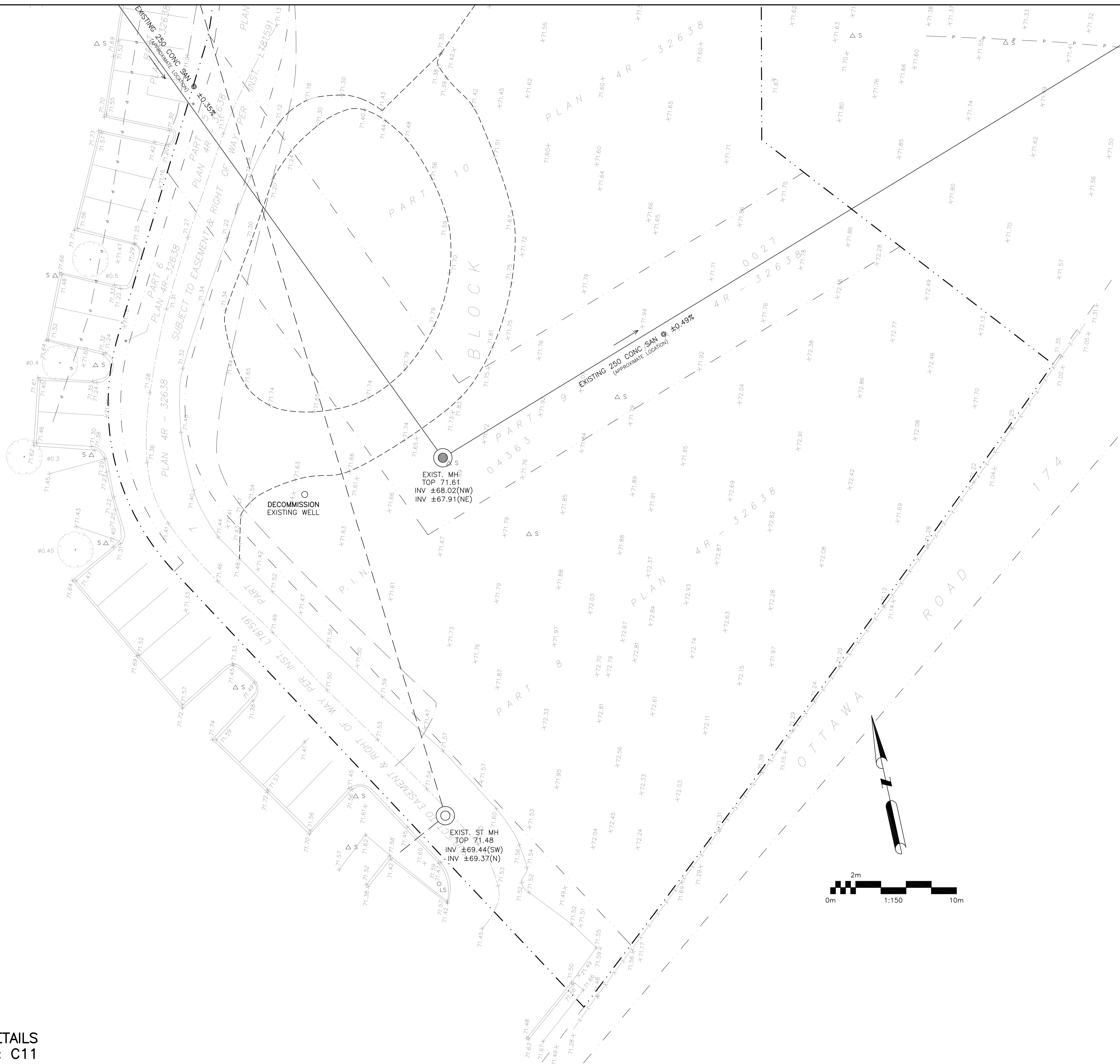
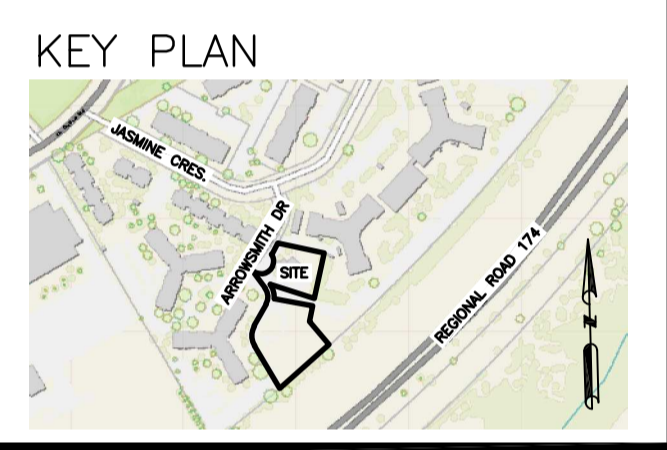


No. 2044
4-Storey Apartment Building



LEGEND

- FFL FINISHED FLOOR ELEVATION
- TOP TOP OF FOUNDATION
- BFL BASEMENT FLOOR ELEVATION
- USF UNDERSIDE OF FOOTING
- PROPERTY LINE
- - - C.R.Z CRITICAL ROOT ZONE
- CB □ CATCH-BASIN
- MH ○ STORM MANHOLE
- CB/MH ○ CATCH-BASIN/MANHOLE
- MH ○ SANITARY MANHOLE
- FH ◇ FIRE HYDRANT
- FDC Y FIRE DEPARTMENT CONNECTION
- VB ■ VALVE & VALVE BOX
- M WATER METER
- Ⓜ REMOTE WATER METER
- SAN SANITARY SEWER
- ST STORM SEWER
- WS/WM WATER SERVICE/WATERMAIN
- OBV OBVERT OF PIPE
- SPL SPRINGLINE OF PIPE
- INV INVERT OF PIPE
- I.O.S TOP OF SLOPE
- B.O.S BOTTOM OF SLOPE
- CENTERLINE OF SWALE
- 150mm BARRIER CURB
- D.C DEPRESSED CURB
- ▨ ROAD CUT REINSTATEMENT

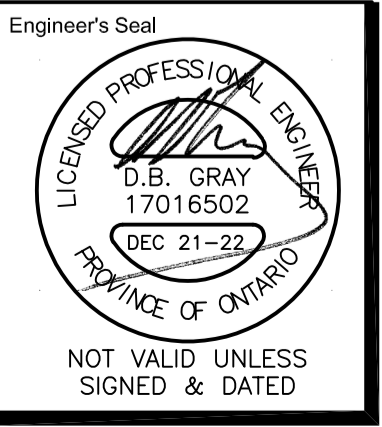


No.	DATE	REVISION
2	DEC 21-22	ISSUED FOR APPROVAL
1	DEC 19-22	ISSUED FOR COORDINATION

D. B. GRAY ENGINEERING INC.
Stormwater Management - Grading & Drainage - Storm & Sanitary Sewers - Watermain
 700 Long Point Circle 613-425-8044
 Ottawa, Ontario d.gray@dbgrayengineering.com

Project
PROPOSED 6-STOREY MIXED-USE BUILDING
2040 ARROWSMITH DRIVE
 OTTAWA, ONTARIO

Drawing Title
EXISTING CONDITIONS, REMOVALS & DECOMMISSIONING PLAN
 (SOUTH)



Drawn D.B.G.
 H. Scale 1:150
 V. Scale
 Date DEC 19-22
 Job No. 22062

Drawing No.
C-6
 of 14

REFER TO NOTES & DETAILS
 ON DRAWINGS C-10 & C11

