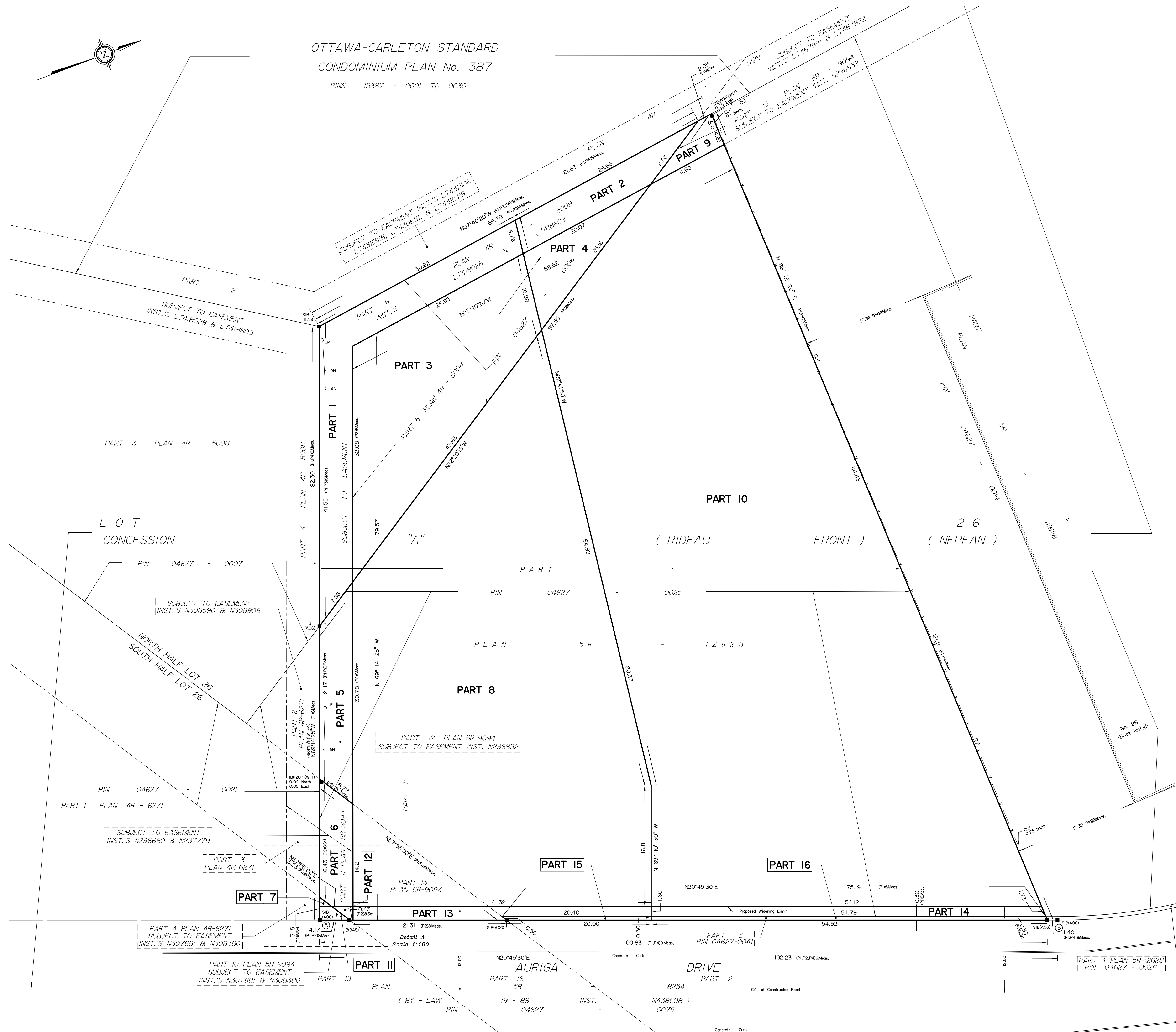


OTTAWA-CARLETON STANDARD  
CONDOMINIUM PLAN No. 387

PINS 15387 - 0001 TO 0030



I REQUIRE THIS PLAN TO BE DEPOSITED UNDER THE LAND TITLES ACT.  
DATE: \_\_\_\_\_

**PLAN 4R-**  
RECEIVED AND DEPOSITED  
DATE: \_\_\_\_\_

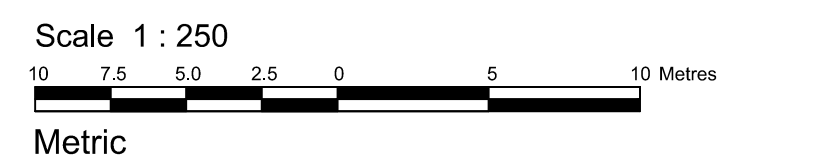
E. H. HERWEYER  
ONTARIO LAND SURVEYOR

REPRESENTATIVE FOR  
LAND REGISTRAR FOR THE  
LAND TITLES DIVISION OF  
OTTAWA-CARLETON NO. 4.

SCHEDULE			
AREA (Sq.m.)	PART	LOT	CONCESSION
304.1	1		
112.6	2		
570.2	3		
105.5	4		
119.4	5		
72.3	6		
1.0	7		
2369	8	PART OF 26	"A" (RIDEAU FRONT)
31.4	9		
3998	10		
5.5	11		
3.2	12		
72.4	13		
87.1	14		
4.1	15		
16.5	16		

Parts 1 and 2 are subject to easement Inst.'s L7418028 & L7418009.  
Part 5 is subject to easement Inst. N296832.  
Parts 6 & 12 are subject to easement Inst.'s N296660 & N296279.  
Parts 7 & 11 are subject to easement Inst.'s N307681 & N308380.  
Part 10 is subject to easement Inst. N296832.

**PLAN OF SURVEY OF  
PART OF LOT 26  
CONCESSION "A" (RIDEAU FRONT)  
GEOGRAPHIC TOWNSHIP OF NEPEAN  
CITY OF OTTAWA**  
Surveyed by Annis, O'Sullivan, Vollebakk Ltd.



DISTANCES AND COORDINATES SHOWN ON THIS PLAN ARE IN METRES AND CAN BE CONVERTED TO FEET BY DIVIDING BY 0.3048.

**Surveyor's Certificate**  
I CERTIFY THAT:  
1. This survey and plan are correct and in accordance with the Surveyors Act, the Surveyors Regulation and the Land Titles Act and the regulations made under them.  
2. The survey was completed on the \_\_\_ day of \_\_\_\_\_, 2022.

Date: \_\_\_\_\_  
E. H. Herweyer  
Ontario Land Surveyor

- Notes & Legend**
- - Denotes Survey Monument Planted
  - - Survey Monument Found
  - SIB - Standard Iron Bar
  - SSIB - Short Standard Iron Bar
  - IB - Iron Bar
  - (WIT) - Witness
  - (AOG) - Annis, O'Sullivan, Vollebakk Ltd.
  - Meas. - Measured
  - (P1) - Plan SR-12628
  - (P2) - Plan SR-8094
  - (P3) - Plan AR-5008
  - (P4) - (AOG) Plan December 17, 2004
  - CLF - Chain Link Fence
  - o UP - Utility Pole
  - AN - Anchor

Distances shown on this plan are ground distances and can be converted to grid distances by multiplying by the combined scale factor of 0.99999x.  
Bearings are astronomic, derived from the Westery limit of Auriga Drive, shown to be N20°49'30"E on Plan 5R-12628.  
Coordinates are derived from Can-Net 2016 Real Time Network GPS observations referenced to Specified Control Points 0191968005 and 0191975075, MTM Zone 9 (76°30' West Longitude) NAD-83 (original).  
Coordinate values are to urban accuracy in accordance with O. Reg. 216/10.  
• 0191968005    Northing 5027191.26    Easting 361496.76  
• 0191975075    Northing 5016816.93    Easting 360806.84  
• Point A    Northing 5021616.49    Easting 367144.04  
• Point B    Northing 5021712.02    Easting 367180.42  
Caution: Coordinates cannot, in themselves, be used to re-establish corners or boundaries shown on this plan.