

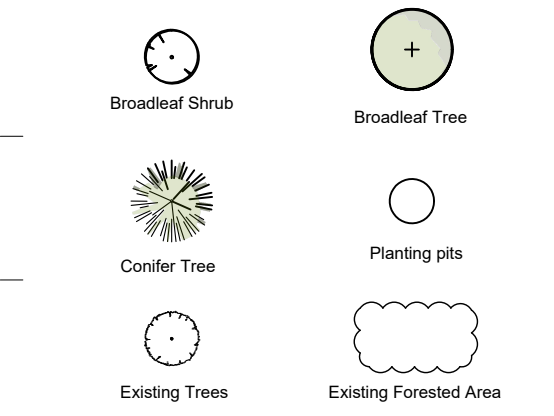


LOCATION PLAN
N.T.S.

DRAWING LEGEND, L100

- Tree Protection Area, refer to Tree Conservation Report
- Storm Retention Area

PLANTATION CALLOUTS



HATCHING CAPTIONS

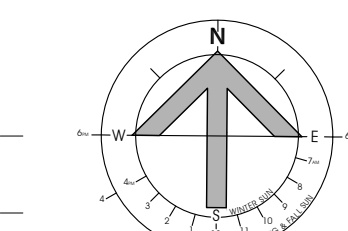
- Concrete footpath
- Planting area
- Lawn
- Tree Protection Area

RECORD OF REVISIONS:

NO.	REVISION	DATE (MM/DD/YY)
1	PLANTING PLAN FOR PERMIT	07-18-23
2	PRELIMINARY PLANTING PLAN REV1	05-15-23
3	PRELIMINARY PLANTING PLAN	01-20-23



PROJECT NORTH

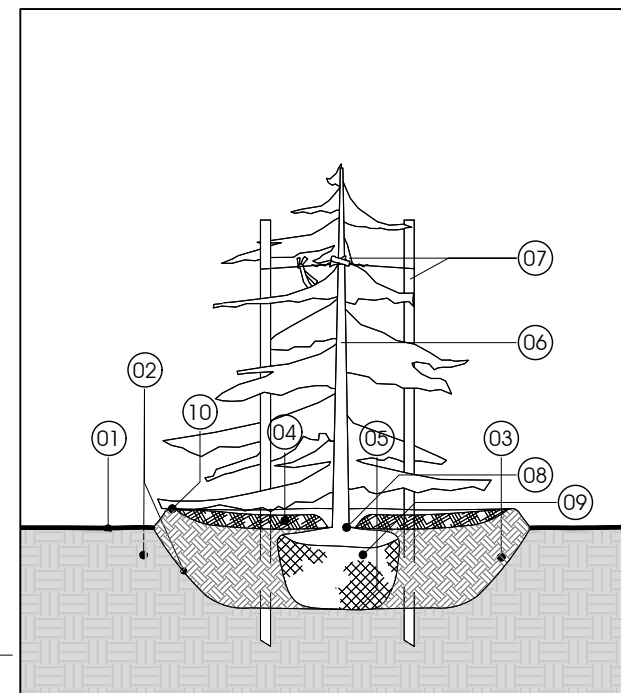


PROJECT TITLE:

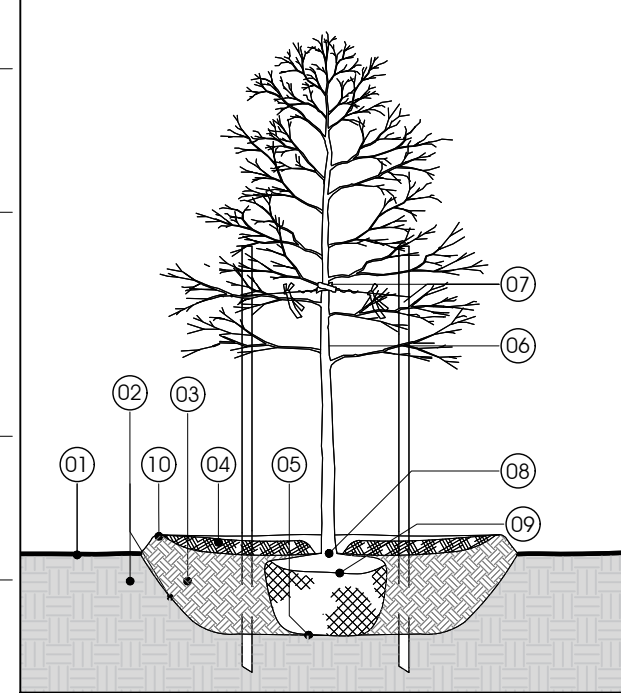
AURIGA ENTREPOT
30 AURIGA DRIVE
OTTAWA, ON

DRAWING TITLE:
PLANTING PLAN
FOR PERMIT APPLICATION

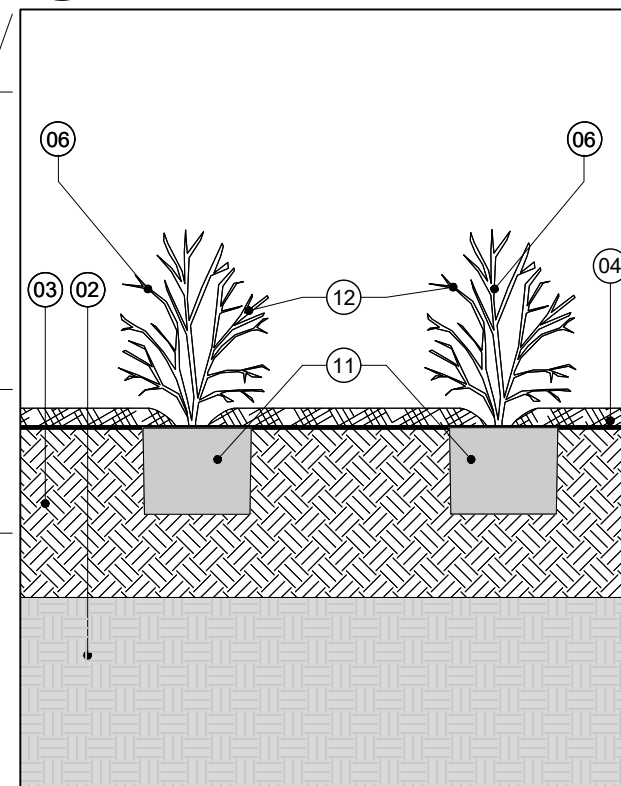
DRAWN BY:	P. RAKHASIA	DRAWING NUMBER:	L100
DATE:	07-18-2023	REVISION NUMBER:	
REVIEWED BY:	S. PARENT	CLIENT PROJECT #:	
APPROVED BY:	D. MATICHUK	PROJECT #:	
PRINT DATE:			
SUBMITTED FOR:	PERMIT		
DATE:	JULY 18, 2023		



1 CONIFEROUS TREE PLANTING
L100 1:50



2 DECIDUOUS TREE PLANTING
L100 1:50



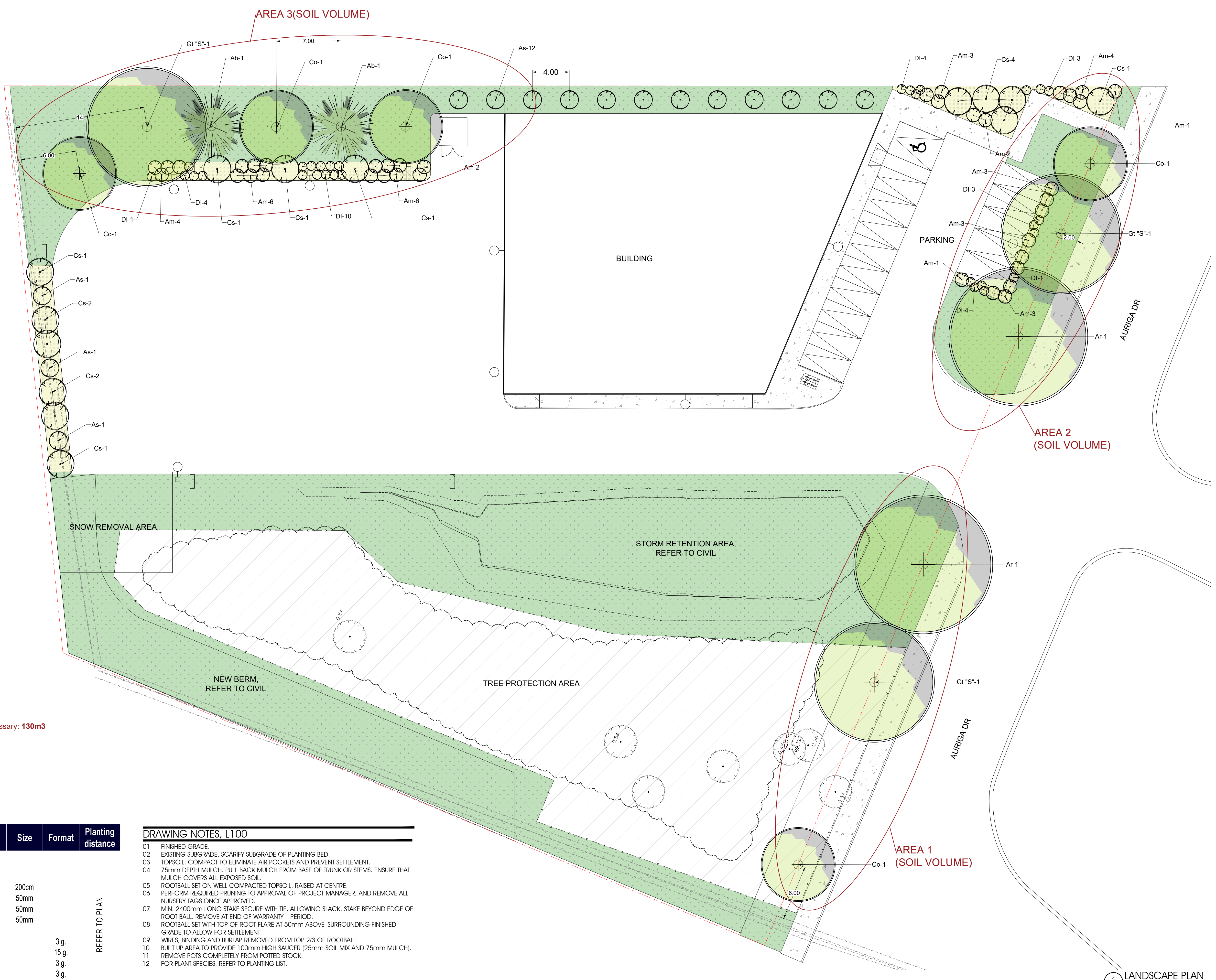
3 SHRUB PLANTING DETAIL
L100 1:25

- SOIL VOLUME**
- Area 1:**
- 3 Large trees/ volume necessary: **90m³**
- Total area volume (for 1 meter deep): **250m³**
- Area 2:**
- 2 Large trees, 1 Medium tree/ volume necessary: **85m³**
- Total area volume (for 1 meter deep): **214m³**
- Area 3:**
- 1 Large tree, 2 Medium trees, 2 Conifers/ volume necessary: **130m³**
- Total area volume (for 1 meter deep): **320m³**

Planting List

Item	Quantity	Latin name	Size	Format	Planting distance
Trees					
Ab	2	Abies balsamea	200cm		
Ar	2	Acer rubrum	50mm		
Co	5	Celtis occidentalis	50mm		
Gt "S"	3	Gleditsia triacanthos "Shademaster"	50mm		
Shrubs					
Am	38	Aronia melanocarpa		3g.	
As	15	Amelanchier sanguinea		15g.	
Cs	14	Cornus stolonifera		3g.	
DI	30	Diervilla lonicera		3g.	

- DRAWING NOTES, L100**
- FINISHED GRADE.
 - EXISTING SUBGRADE. SCARIFY SUBGRADE OF PLANTING BED.
 - TOPSOIL. COMPACT TO ELIMINATE AIR POCKETS AND PREVENT SETTLEMENT.
 - 75mm DEPTH MULCH. PULL BACK MULCH FROM BASE OF TRUNK OR STEMS. ENSURE THAT MULCH COVERS ALL EXPOSED SOIL.
 - ROOTBALL SET ON WELL COMPACTED TOPSOIL, RAISED AT CENTRE.
 - PERFORM REQUIRED PRUNING TO APPROVAL OF PROJECT MANAGER, AND REMOVE ALL NURSERY TAGS ONCE APPROVED.
 - MIN. 2400mm LONG STAKE SECURE WITH TIE, ALLOWING SLACK. STAKE BEYOND EDGE OF ROOT BALL. REMOVE AT END OF WARRANTY PERIOD.
 - ROOTBALL SET WITH TOP OF ROOT FLARE AT 50mm ABOVE SURROUNDING FINISHED GRADE TO ALLOW FOR SETTLEMENT.
 - WIRES, BINDING AND BURLAP REMOVED FROM TOP 2/3 OF ROOTBALL.
 - BUILT UP AREA TO PROVIDE 100mm HIGH SAUCER (25mm SOIL MIX AND 75mm MULCH).
 - REMOVE POTS COMPLETELY FROM POTTED STOCK.
 - FOR PLANT SPECIES, REFER TO PLANTING LIST.



4 LANDSCAPE PLAN
L100 1:200

