

TOPOGRAPHICAL PLAN OF
PART OF LOT 27
CONCESSION 2 (OTTAWA FRONT)
 GEOGRAPHIC TOWNSHIP OF GLOUCESTER
 CITY OF OTTAWA
 Prepared by Annis, O'Sullivan, Vollebek Ltd.
 Field Work Completed on June 9, 2022
 Plan Amended on June 28, 2022 to Add Under Ground Gas & Rogers.

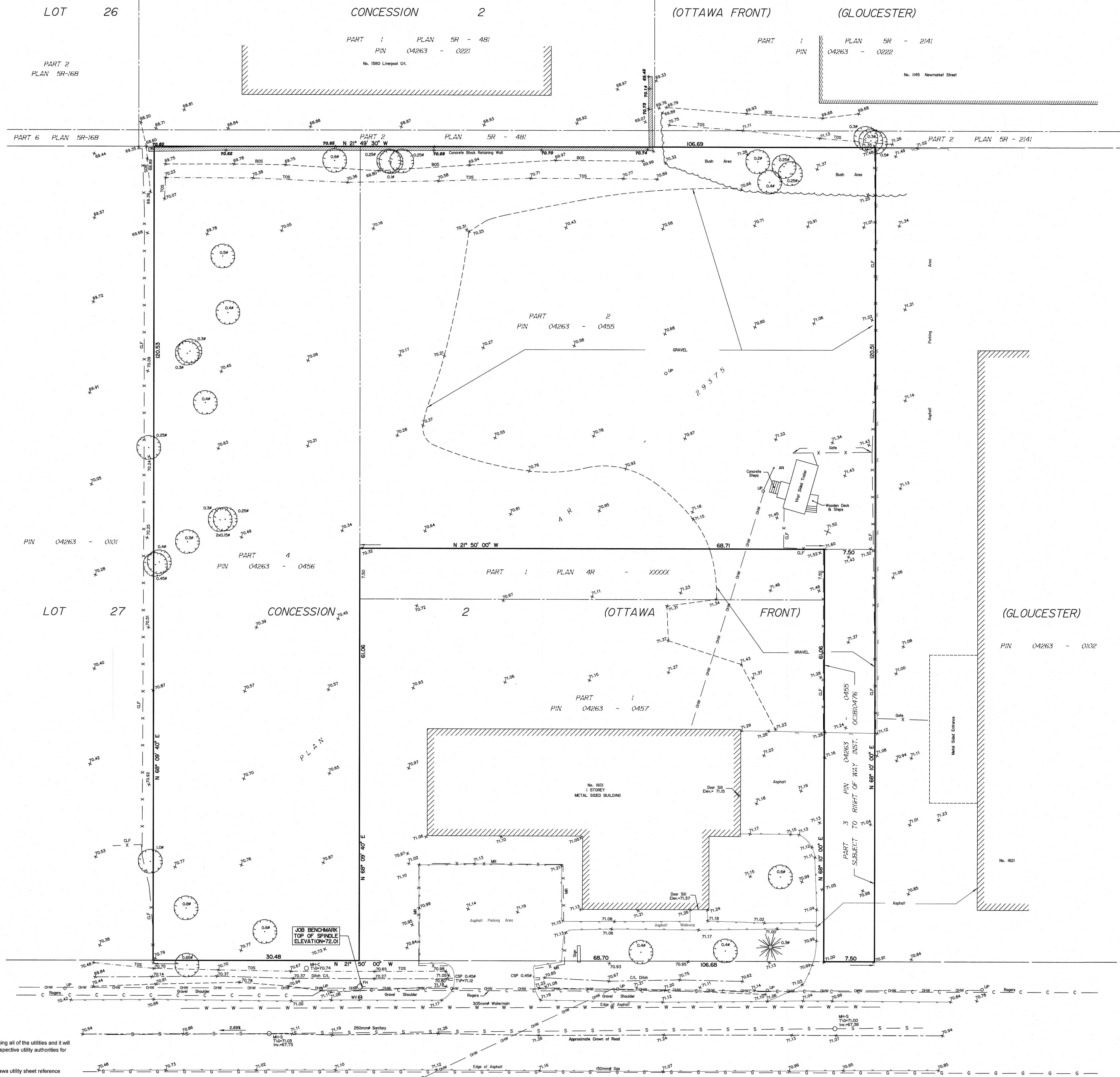
Scale 1 : 250
 0 5 10 15 20 25 30 35 40 45 50 55 60 65 70 75 80 85 90 95 100 Metres

Metric
 DISTANCES SHOWN ON THIS PLAN ARE IN METRES AND
 CAN BE CONVERTED TO FEET BY DIVIDING BY 0.3048

June 28, 2022
 Date
 E.H. Herveyer, O.L.S.

Notes & Legend

- Denotes
- Deciduous Tree
 - Coniferous Tree
 - Fire Hydrant
 - Water Valve
 - Maintenance Hole (Sanitary)
 - Maintenance Hole Communication
 - Overhead Wires
 - Underground Sanitary Sewer
 - Underground Water
 - Underground Rogers
 - Corrugated Steel Pipe
 - Utility Pole
 - Anchor
 - Chain Link Fence
 - Metal Fence
 - Diameter
 - Location of Elevations
 - Top of Wall Elevation
 - Top of Slope
 - Bottom of Slope
 - Underground Gas



UTILITY NOTES

- This drawing cannot be accepted as acknowledging all of the utilities and it will be the responsibility of the user to contact the respective utility authorities for confirmation.
- Only visible surface utilities were located.
- Underground utility data derived from City of Ottawa utility sheet reference H-21-12 & H-21-11.
- Sanitary and storm sewer grades and inverts were derived from City of Ottawa Plans (Michael Street August 25, 1960)
- A field location of underground plant by the pertinent utility authority is mandatory before any work involving breaking ground, probing, excavating etc.

ELEVATION NOTES

- Elevations shown are geodetic and are referred to the CGVD28 geodetic datum, derived from vertical control monument No. 001196530385 having an elevation of 77.150 metres.
- It is the responsibility of the user of this information to verify that the job benchmark has not been altered or disturbed and that its relative elevation and description agrees with the information shown on this drawing.

SITE AREA = 8662 m²
 BOUNDARY INFORMATION COMPILED FROM PLAN 4R-29375

MICHAEL STREET (AS WIDENED BY BY-LAW 241-58, INST.(GL32524) (PLAN BA-2542)
 PIN 04263 - 0292